

# [MS-RSVD]:

## Remote Shared Virtual Disk Protocol

---

### Intellectual Property Rights Notice for Open Specifications Documentation

- **Technical Documentation.** Microsoft publishes Open Specifications documentation for protocols, file formats, languages, standards as well as overviews of the interaction among each of these technologies.
- **Copyrights.** This documentation is covered by Microsoft copyrights. Regardless of any other terms that are contained in the terms of use for the Microsoft website that hosts this documentation, you may make copies of it in order to develop implementations of the technologies described in the Open Specifications and may distribute portions of it in your implementations using these technologies or your documentation as necessary to properly document the implementation. You may also distribute in your implementation, with or without modification, any schema, IDL's, or code samples that are included in the documentation. This permission also applies to any documents that are referenced in the Open Specifications.
- **No Trade Secrets.** Microsoft does not claim any trade secret rights in this documentation.
- **Patents.** Microsoft has patents that may cover your implementations of the technologies described in the Open Specifications. Neither this notice nor Microsoft's delivery of the documentation grants any licenses under those or any other Microsoft patents. However, a given Open Specification may be covered by Microsoft [Open Specification Promise](#) or the [Community Promise](#). If you would prefer a written license, or if the technologies described in the Open Specifications are not covered by the Open Specifications Promise or Community Promise, as applicable, patent licenses are available by contacting [iplg@microsoft.com](mailto:iplg@microsoft.com).
- **Trademarks.** The names of companies and products contained in this documentation may be covered by trademarks or similar intellectual property rights. This notice does not grant any licenses under those rights. For a list of Microsoft trademarks, visit [www.microsoft.com/trademarks](http://www.microsoft.com/trademarks).
- **Fictitious Names.** The example companies, organizations, products, domain names, e-mail addresses, logos, people, places, and events depicted in this documentation are fictitious. No association with any real company, organization, product, domain name, email address, logo, person, place, or event is intended or should be inferred.

**Reservation of Rights.** All other rights are reserved, and this notice does not grant any rights other than specifically described above, whether by implication, estoppel, or otherwise.

**Tools.** The Open Specifications do not require the use of Microsoft programming tools or programming environments in order for you to develop an implementation. If you have access to Microsoft programming tools and environments you are free to take advantage of them. Certain Open Specifications are intended for use in conjunction with publicly available standard specifications and network programming art, and assumes that the reader either is familiar with the aforementioned material or has immediate access to it.

## Revision Summary

Date	Revision History	Revision Class	Comments
8/8/2013	1.0	New	Released new document.
11/14/2013	2.0	Major	Significantly changed the technical content.
2/13/2014	3.0	Major	Significantly changed the technical content.
5/15/2014	4.0	Major	Significantly changed the technical content.
6/30/2015	5.0	Major	Significantly changed the technical content.
10/16/2015	6.0	Major	Significantly changed the technical content.

# Table of Contents

<b>1</b>	<b>Introduction .....</b>	<b>7</b>
1.1	Glossary .....	7
1.2	References .....	7
1.2.1	Normative References .....	8
1.2.2	Informative References .....	8
1.3	Overview .....	8
1.4	Relationship to Other Protocols .....	8
1.5	Prerequisites/Preconditions .....	9
1.6	Applicability Statement .....	9
1.7	Versioning and Capability Negotiation .....	9
1.8	Vendor-Extensible Fields .....	10
1.9	Standards Assignments.....	10
<b>2</b>	<b>Messages.....</b>	<b>11</b>
2.1	Transport.....	11
2.2	Message Syntax.....	11
2.2.1	Constants .....	11
2.2.2	Operation Codes.....	11
2.2.3	Error Code .....	12
2.2.4	Structures .....	13
2.2.4.1	SVHDX_TUNNEL_CHECK_CONNECTION_REQUEST Structure .....	13
2.2.4.2	SVHDX_TUNNEL_CHECK_CONNECTION_RESPONSE Structure .....	13
2.2.4.3	SVHDX_TUNNEL_SRB_STATUS_REQUEST Structure .....	14
2.2.4.4	SVHDX_TUNNEL_SRB_STATUS_RESPONSE Structure .....	14
2.2.4.5	SVHDX_TUNNEL_DISK_INFO_REQUEST Structure.....	15
2.2.4.6	SVHDX_TUNNEL_DISK_INFO_RESPONSE Structure.....	16
2.2.4.7	SVHDX_TUNNEL_SCSI_REQUEST Structure.....	17
2.2.4.8	SVHDX_TUNNEL_SCSI_RESPONSE Structure.....	18
2.2.4.9	SVHDX_TUNNEL_VALIDATE_DISK_REQUEST Structure.....	20
2.2.4.10	SVHDX_TUNNEL_VALIDATE_DISK_RESPONSE Structure.....	20
2.2.4.11	SVHDX_TUNNEL_OPERATION_HEADER Structure.....	20
2.2.4.12	SVHDX_OPEN_DEVICE_CONTEXT Structure .....	21
2.2.4.13	SVHDX_TUNNEL_INITIAL_INFO_REQUEST Structure .....	22
2.2.4.14	SVHDX_TUNNEL_INITIAL_INFO_RESPONSE Structure .....	22
2.2.4.15	SVHDX_SHARED_VIRTUAL_DISK_SUPPORT_REQUEST Structure .....	23
2.2.4.16	SVHDX_SHARED_VIRTUAL_DISK_SUPPORT_RESPONSE Structure .....	23
2.2.4.17	SVHDX_META_OPERATION_START_REQUEST Structure .....	24
2.2.4.17.1	SVHDX_META_OPERATION_CREATE_SNAPSHOT Structure .....	25
2.2.4.17.1.1	SVHDX_META_OPERATION_CREATE_CDP_PARAMETER Structure ....	27
2.2.4.17.2	SVHDX_META_OPERATION_EXTRACT Structure .....	27
2.2.4.17.3	SVHDX_META_OPERATION_CONVERT_TO_VHDSET Structure.....	28
2.2.4.17.4	SVHDX_META_OPERATION_RESIZE_VIRTUAL_DISK Structure .....	29
2.2.4.18	SVHDX_META_OPERATION_REPLY Structure .....	29
2.2.4.19	SVHDX_TUNNEL_VHDSET_QUERY_INFORMATION_REQUEST Structure.....	30
2.2.4.20	SVHDX_TUNNEL_VHDSET_QUERY_INFORMATION_SNAPSHOT_LIST_RESPONSE Structure .....	31
2.2.4.21	SVHDX_TUNNEL_VHDSET_QUERY_INFORMATION_SNAPSHOT_ENTRY_RESPON SE Structure .....	32
2.2.4.22	SVHDX_TUNNEL_VHDSET_QUERY_INFORMATION_OPTIMIZE_RESPONSE Structure .....	33
2.2.4.23	SVHDX_META_OPERATION_QUERY_PROGRESS_REQUEST Structure.....	33
2.2.4.24	SVHDX_META_OPERATION_QUERY_PROGRESS_RESPONSE Structure .....	34
2.2.4.25	SVHDX_CHANGE_TRACKING_GET_PARAMETERS_RESPONSE Structure .....	34
2.2.4.26	SVHDX_TUNNEL_DELETE_SNAPSHOT_REQUEST Structure.....	35

2.2.4.27	SVHDX_CHANGE_TRACKING_START_REQUEST Structure .....	35
2.2.4.28	SVHDX_CHANGE_TRACKING_START_RESPONSE Structure .....	36
2.2.4.29	SVHDX_CHANGE_TRACKING_STOP_REQUEST Structure .....	36
2.2.4.30	SVHDX_CHANGE_TRACKING_STOP_RESPONSE Structure .....	37
2.2.4.31	SVHDX_OPEN_DEVICE_CONTEXT_RESPONSE Structure .....	37
2.2.4.32	SVHDX_OPEN_DEVICE_CONTEXT_V2 Structure .....	38
2.2.4.33	SVHDX_OPEN_DEVICE_CONTEXT_V2_RESPONSE Structure .....	39
2.2.4.34	RSVD_BLOCK_DEVICE_TARGET_SPECIFIER Structure .....	41
2.2.4.35	RSVD_BLOCK_DEVICE_TARGET_SPECIFIER_SNAPSHOT Structure .....	42
2.2.4.36	SVHDX_APPLY_SNAPSHOT_PARAMS Structure .....	42
2.2.4.37	SVHDX_TUNNEL_QUERY_VIRTUAL_DISK_CHANGES_REQUEST Structure ....	43
2.2.4.38	SVHDX_TUNNEL_QUERY_VIRTUAL_DISK_CHANGES_REPLY Structure .....	43
2.2.4.39	SVHDX_VIRTUAL_DISK_CHANGED_RANGE Structure .....	44
2.2.5	SRB Status Code .....	45
2.2.6	Snapshot Types .....	45
<b>3</b>	<b>Protocol Details .....</b>	<b>46</b>
3.1	Client Details .....	46
3.1.1	Abstract Data Model .....	46
3.1.1.1	Global .....	46
3.1.2	Timers .....	46
3.1.3	Initialization .....	46
3.1.4	Higher-Layer Triggered Events .....	46
3.1.4.1	Sending Any Outgoing Message .....	46
3.1.4.2	Application Requests Opening a Shared Virtual Disk .....	46
3.1.4.3	Application Requests Closing a Shared Virtual Disk .....	47
3.1.4.4	Application Requests Reading From a Shared Virtual Disk .....	48
3.1.4.5	Application Requests Writing To a Shared Virtual Disk .....	48
3.1.4.6	Application Requests Virtual Disk File information .....	48
3.1.4.7	Application Requests Connection Status .....	49
3.1.4.8	Application Requests Shared Virtual Disk Information .....	49
3.1.4.9	Application Requests Execution of SCSI Command .....	49
3.1.4.10	Application Requests to Validate a Shared Virtual Disk .....	50
3.1.4.11	Application Requests Querying Shared Virtual Disk Support .....	51
3.1.4.12	Application Requests Creating a Virtual Machine Snapshot .....	51
3.1.4.13	Application Requests Creating a CDP Snapshot .....	52
3.1.4.14	Application Requests Optimizing the Target VHD set .....	53
3.1.4.15	Application Requests Extracting a Differencing VHD .....	54
3.1.4.16	Application Requests Converting a Virtual Disk to VHD Set .....	55
3.1.4.17	Application Requests Resizing a Shared Virtual Disk .....	56
3.1.4.18	Application Requests Querying Meta Operation Progress .....	57
3.1.4.19	Application Requests Querying VHD Set Information .....	57
3.1.4.20	Application Requests Deleting a Snapshot .....	58
3.1.4.21	Application Requests Querying Change Tracking Parameters .....	58
3.1.4.22	Application Requests Starting a Change Tracking Operation .....	59
3.1.4.23	Application Requests Stopping a Change Tracking Operation .....	60
3.1.4.24	Application Requests Opening a Shared VHD Set using a Target Specifier ....	60
3.1.4.25	Application Requests to Apply Snapshot .....	61
3.1.4.26	Application Requests Querying List of Changed Ranges .....	62
3.1.5	Message Processing Events and Sequencing Rules .....	62
3.1.5.1	Receiving an Open Response .....	62
3.1.5.2	Receiving a Close Response .....	62
3.1.5.3	Receiving a Read Response .....	63
3.1.5.4	Receiving a Write Response .....	63
3.1.5.5	Receiving a Virtual Disk File Information Response .....	64
3.1.5.6	Receiving a Connection Status Response .....	64
3.1.5.7	Receiving a Shared Virtual Disk Information Response .....	64
3.1.5.8	Receiving a SCSI Command Response .....	64

3.1.5.9	Receiving a Validate Disk Response .....	64
3.1.5.10	Receiving a Shared Virtual Disk Support Response .....	64
3.1.5.11	Receiving a Meta-Operation Start Response .....	64
3.1.5.12	Receiving a Meta-Operation Progress Response .....	64
3.1.5.13	Receiving a Query VHD Set Information Response .....	65
3.1.5.14	Receiving a Delete Snapshot Response .....	65
3.1.5.15	Receiving a Change Tracking Parameter Response .....	65
3.1.5.16	Receiving a Start Change Tracking Response .....	65
3.1.5.17	Receiving a Stop Change Tracking Response .....	65
3.1.6	Timer Events.....	65
3.1.7	Other Local Events.....	65
3.2	Server Details.....	65
3.2.1	Abstract Data Model.....	65
3.2.1.1	Global.....	65
3.2.1.2	Per Open .....	66
3.2.1.3	Per SenseError in SenseErrorDataList .....	66
3.2.1.4	Per Snapshot.....	66
3.2.2	Timers .....	67
3.2.3	Initialization .....	67
3.2.4	Higher-Layer Triggered Events .....	67
3.2.4.1	Handling a Tunnel Operation Request .....	67
3.2.4.2	Handling a Shared Virtual Disk Support Request .....	67
3.2.5	Message Processing Events and Sequencing Rules .....	67
3.2.5.1	Receiving an Open Request .....	68
3.2.5.2	Receiving a Close Request.....	69
3.2.5.3	Receiving a Read Request .....	70
3.2.5.4	Receiving a Write Request.....	71
3.2.5.5	Receiving a Tunnel Operation Request .....	72
3.2.5.5.1	Receiving a Virtual Disk File Information Request .....	72
3.2.5.5.2	Receiving a Connection Status Request .....	73
3.2.5.5.3	Receiving a Status Request for a Prior Operation .....	73
3.2.5.5.4	Receiving a Shared Virtual Disk Information Request .....	74
3.2.5.5.5	Receiving a SCSI Command Request .....	75
3.2.5.5.6	Receiving a Validate Disk Request .....	76
3.2.5.5.7	Receiving a Start Meta-Operation Request.....	77
3.2.5.5.7.1	Receiving a Create Snapshot Request.....	77
3.2.5.5.7.2	Receiving an Optimize Request.....	78
3.2.5.5.7.3	Receiving an ExtractVHD Request .....	78
3.2.5.5.7.4	Receiving a Convert to VHD Set Request.....	79
3.2.5.5.7.5	Receiving a Resize Request .....	79
3.2.5.5.7.6	Receiving an Apply Snapshot Request .....	80
3.2.5.5.8	Receiving a Query Meta-Operation Progress Request .....	80
3.2.5.5.9	Receiving a Query VHD Set Information Request .....	81
3.2.5.5.10	Receiving a Delete Snapshot Request.....	84
3.2.5.5.11	Receiving a Change Tracking Get Parameter Request.....	84
3.2.5.5.12	Receiving a Change Tracking Start Request .....	85
3.2.5.5.13	Receiving a Change Tracking Stop Request.....	85
3.2.5.5.14	Receiving a Query Virtual Disk changes request .....	85
3.2.5.6	Receiving a Query Shared Virtual Disk Support Request.....	87
3.2.5.7	Receiving an Open Request with a Target Specifier .....	87
3.2.6	Timer Events.....	88
3.2.7	Other Local Events.....	88
<b>4</b>	<b>Protocol Examples .....</b>	<b>89</b>
4.1	Retrieving Virtual Disk File Information .....	89
4.2	Executing a SCSI Command .....	90
4.3	Creating a Virtual Machine Snapshot .....	93
4.4	Retrieving a VHD Set Snapshot List .....	96

<b>5</b>	<b>Security</b> .....	<b>99</b>
5.1	Security Considerations for Implementers .....	99
5.2	Index of Security Parameters .....	99
<b>6</b>	<b>Appendix A: Product Behavior</b> .....	<b>100</b>
<b>7</b>	<b>Change Tracking</b> .....	<b>102</b>
<b>8</b>	<b>Index</b> .....	<b>106</b>

# 1 Introduction

The Remote Shared Virtual Disk (RSVD) Protocol is a block-based protocol that is used to access virtual disks in a shared fashion across a network over Server Message Block (SMB) Protocol version 3 (SMB3).

Sections 1.8, 2, and 3 of this specification are normative and can contain the terms MAY, SHOULD, MUST, MUST NOT, and SHOULD NOT as defined in [\[RFC2119\]](#). Sections 1.5 and 1.9 are also normative but do not contain those terms. All other sections and examples in this specification are informative.

## 1.1 Glossary

The following terms are specific to this document:

**continuous data protection snapshot (CDP snapshot):** A snapshot that tracks virtual disk changes and occasionally stores them in the underlying object store.

**differencing virtual hard disk (VHD):** A virtual hard disk that stores changes made to an associated virtual hard disk.

**globally unique identifier (GUID):** A term used interchangeably with universally unique identifier (UUID) in Microsoft protocol technical documents (TDs). Interchanging the usage of these terms does not imply or require a specific algorithm or mechanism to generate the value. Specifically, the use of this term does not imply or require that the algorithms described in [\[RFC4122\]](#) or [\[C706\]](#) must be used for generating the **GUID**. See also universally unique identifier (UUID).

**persistent reservation:** A SCSI feature supporting control operations for shared devices ([SPC-3] section 5.6).

**SCSI command descriptor block:** A block of information that describes the SCSI command.

**sense data:** Data describing command-completed information that a device server delivers to an application client in the same structure as the status or as parameter data in response to an SCSI command.

**small computer system interface (SCSI):** A set of standards for physically connecting and transferring data between computers and peripheral devices.

**Unicode:** A character encoding standard developed by the Unicode Consortium that represents almost all of the written languages of the world. The **Unicode** standard [\[UNICODE5.0.0/2007\]](#) provides three forms (UTF-8, UTF-16, and UTF-32) and seven schemes (UTF-8, UTF-16, UTF-16 BE, UTF-16 LE, UTF-32, UTF-32 LE, and UTF-32 BE).

**virtual hard disk set (VHD set):** A type of virtual disk that stores snapshot details.

**MAY, SHOULD, MUST, SHOULD NOT, MUST NOT:** These terms (in all caps) are used as defined in [\[RFC2119\]](#). All statements of optional behavior use either MAY, SHOULD, or SHOULD NOT.

## 1.2 References

Links to a document in the Microsoft Open Specifications library point to the correct section in the most recently published version of the referenced document. However, because individual documents in the library are not updated at the same time, the section numbers in the documents may not match. You can confirm the correct section numbering by checking the [Errata](#).

### 1.2.1 Normative References

We conduct frequent surveys of the normative references to assure their continued availability. If you have any issue with finding a normative reference, please contact [dochelp@microsoft.com](mailto:dochelp@microsoft.com). We will assist you in finding the relevant information.

[MS-ERREF] Microsoft Corporation, "[Windows Error Codes](#)".

[MS-FSCC] Microsoft Corporation, "[File System Control Codes](#)".

[MS-SMB2] Microsoft Corporation, "[Server Message Block \(SMB\) Protocol Versions 2 and 3](#)".

[MS-SRVS] Microsoft Corporation, "[Server Service Remote Protocol](#)".

[RFC2119] Bradner, S., "Key words for use in RFCs to Indicate Requirement Levels", BCP 14, RFC 2119, March 1997, <http://www.rfc-editor.org/rfc/rfc2119.txt>

[UNICODE] The Unicode Consortium, "The Unicode Consortium Home Page", 2006, <http://www.unicode.org/>

### 1.2.2 Informative References

[MSKB-3025091] Microsoft Corporation, "A shared Hyper-V virtual disk is inaccessible when it is located in Storage Spaces on a server that is running Windows Server 2012 R2", April 2015, <https://support.microsoft.com/en-us/kb/3025091>

[SPC-3] International Committee on Information Technology Standards, "SCSI Primary Commands - 3 (SPC-3)", Project T10/1416-D, May 2005, <http://www.t10.org/cgi-bin/ac.pl?t=f&f=/spc3r23.pdf>

## 1.3 Overview

The Remote Shared Virtual Disk Protocol enables a client application to access virtual disk files in a shared fashion on a remote server.

The RSVD Protocol supports the following features:

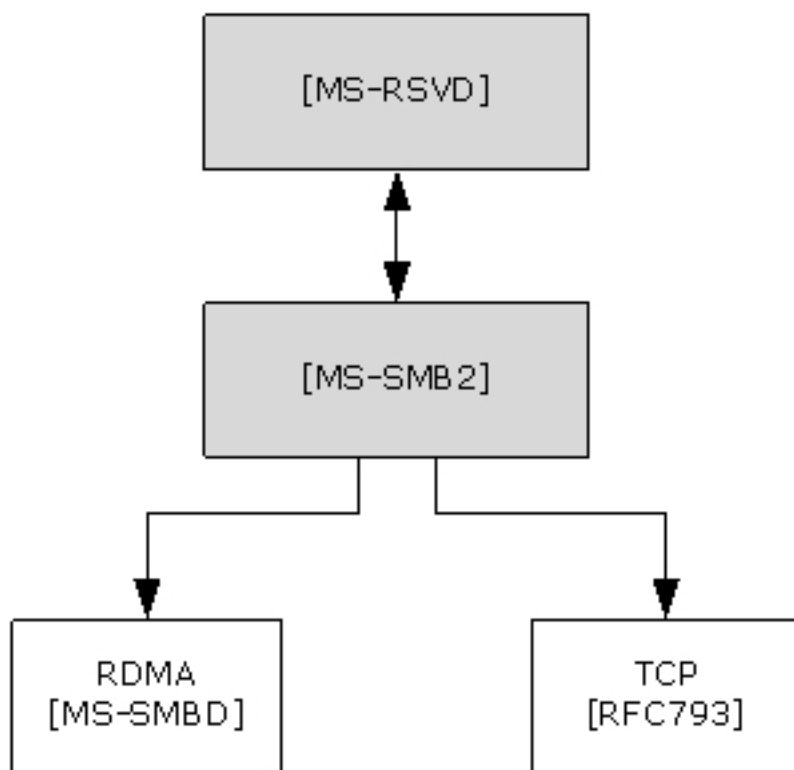
- Allowing a client to open a shared virtual disk on a remote share.
- Reading, writing, or closing shared virtual disk files on the target server.
- Forwarding of raw SCSI commands and receipt of their results.

The Remote Shared Virtual Disk Protocol version 2 additionally enables a client application to create and manage snapshots of shared virtual disk files.

## 1.4 Relationship to Other Protocols

This protocol depends on Server Message Block (SMB) Protocol version 3 (SMB3) for its transport, as specified in [\[MS-SMB2\]](#).





**Figure 1: Relationship to other protocols**

## 1.5 Prerequisites/Preconditions

The RSVD Protocol has the following preconditions:

- An SMB client has established a connection to an SMB server. This has to be done before a client can issue Remote Shared Virtual Disk Protocol commands.
- The SMB client and server support the SVHDX\_OPEN\_DEVICE\_CONTEXT create context, as specified in section [2.2.4.12](#).

## 1.6 Applicability Statement

The Remote Shared Virtual Disk Protocol is applicable for all scenarios that access a shared virtual disk file between client and server.

## 1.7 Versioning and Capability Negotiation

The Remote Shared Virtual Disk Protocol defines the following two versions. [<1>](#)

Version	Value
RSVD Protocol version 1	0x00000001
RSVD Protocol version 2	0x00000002

## **1.8 Vendor-Extensible Fields**

None.

## **1.9 Standards Assignments**

This protocol shares the standards assignments of Server Message Block Protocol versions 2 and 3, as specified in [\[MS-SMB2\]](#) section 1.9.

## 2 Messages

### 2.1 Transport

The following sections specify how RSVD Protocol messages are encapsulated on the wire and common protocol data types.

All RSVD Protocol messages begin with a fixed-length RSVD header that is described in section [2.2.4.11](#). The RSVD tunnel header contains an OperationCode field indicating the operation code that is requested by the RSVD client or responded to by the RSVD server.

Unless otherwise specified, multiple-byte fields (16-bit, 32-bit, and 64-bit fields) in the RSVD Protocol message MUST be transmitted in little-endian order (least-significant byte first).

Unless otherwise indicated, numeric fields are integers of the specified byte length.

Unless otherwise specified, all textual strings MUST be in **Unicode** version 5.0 format, as specified in [\[UNICODE\]](#), using the 16-bit Unicode Transformation Format (UTF-16) form of the encoding. Textual strings with separate fields identifying the length of the string MUST NOT be null-terminated unless otherwise specified.

Unless otherwise noted, fields marked as "Reserved" MUST be set to 0 when being sent and MUST be ignored when received. These fields are reserved for future protocol expansion and MUST NOT be used for implementation-specific functionality.

The RSVD Protocol uses the SMB 3.0.2 or SMB 3.1.1 dialect in SMB Protocol version 3 as its transport. For more information, see [\[MS-SMB2\]](#) section 2.1.

### 2.2 Message Syntax

#### 2.2.1 Constants

Constant name	Meaning
RSVD_CDB_GENERIC_LENGTH 0x10	Generic length of command descriptor block
RSVD_SCSI_SENSE_BUFFER_SIZE 0x14	SENSE buffer size
RSVD_MAXIMUM_NAME_LENGTH 0x7E	Maximum length of the InitiatorHostName field in section <a href="#">2.2.4.12</a>
FSCTL_SVHDX_SYNC_TUNNEL_REQUEST 0x00090304	Control code for SYNC TUNNEL REQUEST
FSCTL_QUERY_SHARED_VIRTUAL_DISK_SUPPORT 0x00090300	Control code for querying shared virtual disk support
FSCTL_SVHDX_ASYNC_TUNNEL_REQUEST 0x00090364	Control code for ASYNC TUNNEL REQUEST

#### 2.2.2 Operation Codes

The following is a list of all control codes used in shared virtual disk operations:

Name	Meaning
RSVD_TUNNEL_GET_INITIAL_INFO_OPERATION 0x02001001	Query shared virtual disk file and server information
RSVD_TUNNEL_SCSI_OPERATION 0x02001002	Perform SCSI operation
RSVD_TUNNEL_CHECK_CONNECTION_STATUS_OPERATION 0x02001003	Query shared virtual disk connection status
RSVD_TUNNEL_SRB_STATUS_OPERATION 0x02001004	Query sense error code of previously failed request
RSVD_TUNNEL_GET_DISK_INFO_OPERATION 0x02001005	Query disk information
RSVD_TUNNEL_VALIDATE_DISK_OPERATION 0x02001006	Perform shared virtual disk validation
RSVD_TUNNEL_META_OPERATION_START 0x02002101	Start a meta-operation
RSVD_TUNNEL_META_OPERATION_QUERY_PROGRESS 0x02002002	Query the progress of an ongoing meta-operation
RSVD_TUNNEL_VHDSET_QUERY_INFORMATION 0x02002005	Query the information about a <b>virtual hard disk set (VHD set)</b>
RSVD_TUNNEL_DELETE_SNAPSHOT 0x02002006	Delete a previously created snapshot
RSVD_TUNNEL_CHANGE_TRACKING_GET_PARAMETERS 0x02002008	Get change-tracking parameters
RSVD_TUNNEL_CHANGE_TRACKING_START 0x02002009	Start change tracking
RSVD_TUNNEL_CHANGE_TRACKING_STOP 0x0200200A	Stop change tracking
RSVD_TUNNEL_QUERY_VIRTUAL_DISK_CHANGES 0x0200200C	Get a list of ranges that have changed in the virtual disk since the indicated snapshot ID. Minimum protocol version: 2

### 2.2.3 Error Code

The following is a list of possible RSVD error codes that can be returned by the server.

Name	Meaning
STATUS_SVHDX_ERROR_STORED 0xC05C0000	Sense error data was stored on server
STATUS_SVHDX_ERROR_NOT_AVAILABLE 0xC05CFF00	Sense error data is not available

Name	Meaning
STATUS_SVHDX_UNIT_ATTENTION_AVAILABLE 0xC05CFF01	Unit Attention data is available for the initiator to query
STATUS_SVHDX_UNIT_ATTENTION_CAPACITY_DATA_CHANGED 0xC05CFF02	The data capacity of the device has changed, resulting in a Unit Attention condition
STATUS_SVHDX_UNIT_ATTENTION_RESERVATIONS_PREEMPTED 0xC05CFF03	A previous operation resulted in this initiator's reservations being preempted, resulting in a Unit Attention condition
STATUS_SVHDX_UNIT_ATTENTION_RESERVATIONS_RELEASED 0xC05CFF04	A previous operation resulted in this initiator's reservations being released, resulting in a Unit Attention condition
STATUS_SVHDX_UNIT_ATTENTION_REGISTRATIONS_PREEMPTED 0xC05CFF05	A previous operation resulted in this initiator's registrations being preempted, resulting in a Unit Attention condition
STATUS_SVHDX_UNIT_ATTENTION_OPERATING_DEFINITION_CHANGED 0xC05CFF06	Represents the data storage format of the device has changed, resulting in a Unit Attention condition
STATUS_SVHDX_RESERVATION_CONFLICT 0xC05CFF07	The current initiator is not allowed to perform the SCSI command because of a reservation conflict
STATUS_SVHDX_WRONG_FILE_TYPE 0xC05CFF08	File on which open is performed is of wrong type
STATUS_SVHDX_VERSION_MISMATCH 0xC05CFF09	Protocol version in request is not equal to 1
STATUS_VHD_SHARED 0xC05CFF0A	The virtual disk cannot be opened because it is currently used in shared mode

## 2.2.4 Structures

### 2.2.4.1 SVHDX\_TUNNEL\_CHECK\_CONNECTION\_REQUEST Structure

The SVHDX\_TUNNEL\_CHECK\_CONNECTION\_REQUEST packet is sent by the client to check the connection status to the shared virtual disk. The request MUST contain only SVHDX\_TUNNEL\_OPERATION\_HEADER, and MUST NOT contain any payload.

### 2.2.4.2 SVHDX\_TUNNEL\_CHECK\_CONNECTION\_RESPONSE Structure

The SVHDX\_TUNNEL\_CHECK\_CONNECTION\_RESPONSE packet is sent by the server in response to the operation RSVD\_TUNNEL\_CHECK\_CONNECTION\_STATUS\_OPERATION. The response MUST contain only SVHDX\_TUNNEL\_OPERATION\_HEADER, and MUST NOT contain any payload.

### 2.2.4.3 SVHDX\_TUNNEL\_SRB\_STATUS\_REQUEST Structure

The SVHDX\_TUNNEL\_SRB\_STATUS\_REQUEST packet is sent by the client to get the sense error code of a previously failed request.

0	1	2	3	4	5	6	7	8	9	10	11	12	13	14	15	16	17	18	19	20	21	22	23	24	25	26	27	28	29	30	31					
StatusKey										Reserved																										
...																																				
...																																				
...																																				
...																																				
...																																				
...																																				

**StatusKey (1 byte):** The client MUST set this field to the least significant byte of the error code of a previously failed request.

**Reserved (27 bytes):** This field MUST be set to zero, and MUST be ignored on receipt.

### 2.2.4.4 SVHDX\_TUNNEL\_SRB\_STATUS\_RESPONSE Structure

The SVHDX\_TUNNEL\_SRB\_STATUS\_RESPONSE packet is sent by the server in a response to the RSVD\_TUNNEL\_SRB\_STATUS\_OPERATION.

0	1	2	3	4	5	6	7	8	9	10	11	12	13	14	15	16	17	18	19	20	21	22	23	24	25	26	27	28	29	30	31	
StatusKey										A	SrbStatus							ScsiStatus								SenseInfoExLength						
SenseDataEx (variable)																																
...																																
...																																

**StatusKey (1 byte):** The server MUST set this field to the status key value received in the request.

**A - SenseInfoAutoGenerated (1 bit):** A 1-bit field used to indicate that **sense data** was automatically generated by the virtual **SCSI** disk.

**SrbStatus (7 bits):** A 7-bit field used to communicate error messages from the server to the client. This field MUST contain one of the values in section [2.2.5](#).

**ScsiStatus (1 byte):** An 8-bit field used to communicate the SCSI status that was returned by the shared virtual disk.

**SenseInfoExLength (1 byte):** The length, in bytes, of the request sense data buffer.

**SenseDataEx (variable):** A buffer of maximum size 20 bytes that contains the sense data.

### 2.2.4.5 SVHDX\_TUNNEL\_DISK\_INFO\_REQUEST Structure

The SVHDX\_TUNNEL\_DISK\_INFO\_REQUEST packet is sent by the client to get shared virtual disk information.

0	1	2	3	4	5	6	7	8	9	10	11	12	13	14	15	16	17	18	19	20	21	22	23	24	25	26	27	28	29	30	31
Reserved1																															
...																															
BlockSize																															
LinkageID																															
...																															
...																															
...																															
IsMounted								Is4kAligned								Reserved2															
FileSize																															
...																															
VirtualDiskId																															
...																															
...																															
...																															

**Reserved1 (8 byte):** The client MUST set this field to zero, and the server MUST ignore it on receipt.

**BlockSize (4 bytes):** The client MUST set this field to zero, and the server MUST ignore it on receipt.

**LinkageID (16 bytes):** The client MUST set this field to zero, and the server MUST ignore it on receipt.

**IsMounted (1 byte):** The client MUST set this field to zero, and the server MUST ignore it on receipt.

**Is4kAligned (1 byte):** The client MUST set this field to zero, and the server MUST ignore it on receipt.

**Reserved2 (2 bytes):** The client MUST set this field to zero, and the server MUST ignore it on receipt.

**FileSize (8 bytes):** The client MUST set this field to zero, and the server MUST ignore it on receipt.

**VirtualDiskId (16 bytes):** This field MUST NOT be used and MUST be reserved. The client MUST set this field to zero, and the server MUST ignore it on receipt.

### 2.2.4.6 SVHDX\_TUNNEL\_DISK\_INFO\_RESPONSE Structure

The SVHDX\_TUNNEL\_DISK\_INFO\_RESPONSE packet is sent by the server in response to an SVHDX\_TUNNEL\_DISK\_INFO\_REQUEST.

0	1	2	3	4	5	6	7	8	9	10	11	12	13	14	15	16	17	18	19	20	21	22	23	24	25	26	27	28	29	30	31
DiskType																															
DiskFormat																															
BlockSize																															
LinkageID																															
...																															
...																															
...																															
IsMounted								Is4kAligned								Reserved															
FileSize																															
...																															
VirtualDiskId																															
...																															
...																															
...																															

**DiskType (4 bytes):** Indicates the type of disk. This field MUST contain exactly one of the following values.

Value	Meaning
VHD_TYPE_FIXED 0x00000002	Indicates that the type of the disk is fixed.
VHD_TYPE_DYNAMIC 0x00000003	Indicates that the type of the disk is dynamic.



**DiskFormat (4 bytes):** Indicates the format of the disk. This field MUST contain exactly one of the following values.

Value	Meaning
VIRTUAL_STORAGE_TYPE_DEVICE_VHDX 0x00000003	Indicates that the type of the disk is shared virtual disk.
VIRTUAL_STORAGE_TYPE_DEVICE_VHDSET 0x00000004	Indicates that the type of the disk is VHD set.

**BlockSize (4 bytes):** Specifies the disk block size in bytes.

**LinkageID (16 bytes):** A **GUID** that specifies the linkage identification of the disk.

**IsMounted (1 byte):** A Boolean value. Zero represents FALSE (0x00), indicating that the disk is not ready for read or write operations. One represents TRUE (0x01), indicating that the disk is mounted and ready for read or write operations.

**Is4kAligned (1 byte):** A Boolean value. Zero represents FALSE, indicating disk sectors are not aligned to 4 kilobytes. One represents TRUE, indicating disk sectors are aligned to 4 kilobytes.

**Reserved (2 bytes):** This field MUST NOT be used and MUST be reserved. The client SHOULD set this field to zero, and the server MUST ignore it on receipt.

**FileSize (8 bytes):** The size, in bytes, of the file opened as the shared virtual disk.

**VirtualDiskId (16 bytes):** A GUID that specifies the identification of the disk.

#### 2.2.4.7 SVHDX\_TUNNEL\_SCSI\_REQUEST Structure

The SVHDX\_TUNNEL\_SCSI\_REQUEST packet is sent by the client to process the SCSI request.

0	1	2	3	4	5	6	7	8	9	10	11	12	13	14	15	16	17	18	19	20	21	22	23	24	25	26	27	28	29	30	31
Length																Reserved1															
CDBLength								SenseInfoExLength								DataIn								Reserved2							
SrbFlags																															
DataTransferLength																															
CDBBuffer																															
...																															
...																															
...																															
Reserved3																															

DataBuffer (variable)
...

**Length (2 bytes):** Specifies the size, in bytes, of the SVHDX\_TUNNEL\_SCSI\_REQUEST structure excluding the **DataBuffer** field. The client MUST set this field to 36.

**Reserved1 (2 byte):** The client MUST set this field to zero.

**CDBLength (1 byte):** The length, in bytes, of the **SCSI command descriptor block**. This value MUST be less than or equal to RSVD\_CDB\_GENERIC\_LENGTH.

**SenseInfoExLength (1 byte):** The length, in bytes, of the request sense data buffer. This value MUST be less than or equal to RSVD\_SCSI\_SENSE\_BUFFER\_SIZE.

**DataIn (1 byte):** This field indicates the SCSI command descriptor block transfer type and MUST be set to one of the following values:

Value	Meaning
0x00	Indicates that the client is requesting data from the server
0x01	Indicates that the client is sending data to the server
0x02	Indicates that the client is neither sending nor requesting an additional data buffer

**Reserved2 (1 byte):** This field MUST be set to 0x00.

**SrbFlags (4 bytes):** An optional, application-provided flag to indicate the options of the SCSI request. This field MUST contain zero or more of the following values:

Name	Meaning
SRB_FLAGS_DATA_IN 0x00000040	The application is sending data to the server
SRB_FLAGS_DATA_OUT 0x00000080	The application is requesting data from the server

**DataTransferLength (4 bytes):** The length, in bytes, of the additional data placed in the **DataBuffer** field.

**CDBBuffer (16 bytes):** A buffer that contains the SCSI command descriptor block.

**Reserved3 (4 bytes):** This field MUST be set to 0x00000000.

**DataBuffer (variable):** A variable-length buffer that contains the additional buffer, as described by the **DataTransferLength** field.

#### 2.2.4.8 SVHDX\_TUNNEL\_SCSI\_RESPONSE Structure

The SVHDX\_TUNNEL\_SCSI\_RESPONSE packet is sent by the server in response to the operation RSVD\_TUNNEL\_SCSI\_OPERATION.

0	1	2	3	4	5	6	7	8	9	0	1	2	3	4	5	6	7	8	9	0	1	2	3	4	5	6	7	8	9	0	1
Length																A	SrbStatus							ScsiStatus							
CDBLength					SenseInfoExLength							DataIn							Reserved												
SrbFlags																															
DataTransferLength																															
SenseDataEx (variable)																															
...																															
...																															
...																															
DataBuffer (variable)																															
...																															

**Length (2 bytes):** Specifies the size, in bytes, of the SVHDX\_TUNNEL\_SCSI\_RESPONSE structure.

**A - SenseInfoAutoGenerated (1 bit):** A 1-bit field used to indicate that sense data was automatically generated by the virtual SCSI disk.

**SrbStatus (1 byte):** A 7-bit field used to communicate error messages from the server to the client. This field MUST contain one of the values in section [2.2.5](#).

**ScsiStatus (1 byte):** An 8-bit field used to communicate the SCSI status that was returned by the target device.

**CDBLength (1 byte):** The length, in bytes, of the SCSI command descriptor block.

**SenseInfoExLength (1 byte):** The length, in bytes, of the request sense data buffer.

**DataIn (1 byte):** This field indicates the SCSI command descriptor block transfer type and MUST be set to one of the following values:

Value	Meaning
0x00	Indicates that the client requested data from the server
0x01	Indicates that the client sent data to the server
0x02	Indicates that the client neither sent nor requested an additional data buffer

**Reserved (1 byte):** This field MUST be set to zero, and MUST be ignored on receipt.

**SrbFlags (4 bytes):** Special flags to indicate options of the SCSI response. This field MUST contain zero or more of the following values:

Name	Meaning
SRB_FLAGS_DATA_IN 0x00000040	The client sent data to the server.
SRB_FLAGS_DATA_OUT 0x00000080	The server is sending data to the client.

**DataTransferLength (4 bytes):** The length, in bytes, of the additional data placed in the **DataBuffer** field.

**SenseDataEx (variable):** A buffer of maximum size 20 bytes that contains the sense data.

**DataBuffer (variable):** A variable-length buffer that contains the additional buffer, as described by the **DataTransferLength** field.

#### 2.2.4.9 SVHDX\_TUNNEL\_VALIDATE\_DISK\_REQUEST Structure

The **SVHDX\_TUNNEL\_VALIDATE\_DISK\_REQUEST** packet is sent by the client to validate the shared virtual disk. This request contains 56 bytes.

0	1	2	3	4	5	6	7	8	9	10	11	12	13	14	15	16	17	18	19	20	21	22	23	24	25	26	27	28	29	30	31	32	33	34	35	36	37	38	39	40	41	42	43	44	45	46	47	48	49	50	51	52	53	54	55
Reserved (56 bytes)																																																							
...																																																							
...																																																							

**Reserved (56 bytes):** The client MUST set all 56 bytes to zero and the server MUST ignore them on receipt.

#### 2.2.4.10 SVHDX\_TUNNEL\_VALIDATE\_DISK\_RESPONSE Structure

The **SVHDX\_TUNNEL\_VALIDATE\_DISK\_RESPONSE** packet is sent by the server in a response to the operation **RSVD\_TUNNEL\_VALIDATE\_DISK\_OPERATION**.

0	1	2	3	4	5	6	7	8	9	10	11	12	13	14	15	16	17	18	19	20	21	22	23	24	25	26	27	28	29	30	31	32	33	34	35	36	37	38	39	40	41	42	43	44	45	46	47	48	49	50	51	52	53	54	55
IsValidDisk																																																							

**IsValidDisk (1 byte):** A Boolean value that, if set, indicates that the disk is valid.

#### 2.2.4.11 SVHDX\_TUNNEL\_OPERATION\_HEADER Structure

The **RSVD** tunnel header is the header of **RSVD** Protocol operations specified in section [2.2.2](#).

0	1	2	3	4	5	6	7	8	9	10	11	12	13	14	15	16	17	18	19	20	21	22	23	24	25	26	27	28	29	30	31	32	33	34	35	36	37	38	39	40	41	42	43	44	45	46	47	48	49	50	51	52	53	54	55
OperationCode																																																							

Status
RequestId
...

**OperationCode (4 bytes):** The command code of this packet. This field MUST contain one of values specified in section 2.2.2.

**Status (4 bytes):** The client SHOULD set this field to zero, and the server MUST ignore it on receipt.

**RequestId (8 bytes):** A value that uniquely identifies an operation request and response for all requests sent by this client.

### 2.2.4.12 SVHDX\_OPEN\_DEVICE\_CONTEXT Structure

The SVHDX\_OPEN\_DEVICE\_CONTEXT packet is sent by the client to open the shared virtual disk.

0	1	2	3	4	5	6	7	8	9	10	11	12	13	14	15	16	17	18	19	20	21	22	23	24	25	26	27	28	29	30	31
Version																															
HasInitiatorId																Reserved															
InitiatorId																															
...																															
...																															
...																															
Flags																															
OriginatorFlags																															
OpenRequestId																															
...																															
InitiatorHostNameLength																InitiatorHostName (126 bytes)															
...																															
...																															

**Version (4 bytes):** The version of the create context. It MUST be set to 0x00000001.

**HasInitiatorId (1 byte):** A Boolean value, where zero represents FALSE and nonzero represents TRUE.

**Reserved (3 bytes):** This field MUST be set to zero when sent and MUST be ignored on receipt.

**InitiatorId (16 bytes):** A GUID that optionally identifies the initiator of the open request.

**Flags (4 bytes):** Reserved. The client SHOULD set this field to 0x00000000, and the server MUST ignore it on receipt.

**OriginatorFlags (4 bytes):** This field is used to indicate which component has originated or issued the operation. This field MUST be set to one of the following values:

Name	Meaning
SVHDX_ORIGINATOR_PVHDPARSER 0x00000001	Shared virtual disk file to be opened as a virtual SCSI disk device
SVHDX_ORIGINATOR_VHDMP 0x00000004	Shared virtual disk file to be opened in underlying object store

**OpenRequestId (8 bytes):** A 64-bit value assigned by the client for an outgoing request. The server MUST ignore it on receipt.

**InitiatorHostNameLength (2 bytes):** The length, in bytes, of the **InitiatorHostName**. This value MUST be less than or equal to RSVD\_MAXIMUM\_NAME\_LENGTH.

**InitiatorHostName (126 bytes):** A 126-byte buffer containing a null-terminated Unicode UTF-16 string that specifies the computer name on which the initiator resides.

#### 2.2.4.13 SVHDX\_TUNNEL\_INITIAL\_INFO\_REQUEST Structure

The SVHDX\_TUNNEL\_INITIAL\_INFO\_REQUEST packet is sent by the client to get the shared virtual disk file information. The request MUST contain only SVHDX\_TUNNEL\_OPERATION\_HEADER, and MUST NOT contain any payload.

#### 2.2.4.14 SVHDX\_TUNNEL\_INITIAL\_INFO\_RESPONSE Structure

The SVHDX\_TUNNEL\_INITIAL\_INFO\_RESPONSE packet is sent by the server in response to an RSVD\_TUNNEL\_GET\_INITIAL\_INFO\_OPERATION packet.

0	1	2	3	4	5	6	7	8	9	10	11	12	13	14	15	16	17	18	19	20	21	22	23	24	25	26	27	28	29	30	31
ServerVersion																															
SectorSize																															
PhysicalSectorSize																															
Reserved																															
VirtualSize																															
...																															

**ServerVersion (4 bytes):** The current version of the protocol running on the server.

**SectorSize (4 bytes):** A 32-bit unsigned integer that indicates the sector size, in bytes, of the shared virtual disk.

**PhysicalSectorSize (4 bytes):** A 32-bit unsigned integer that indicates the physical sector size, in bytes, of the shared virtual disk.

**Reserved (4 bytes):** This field MUST be set to zero, and the client MUST ignore it on receipt.

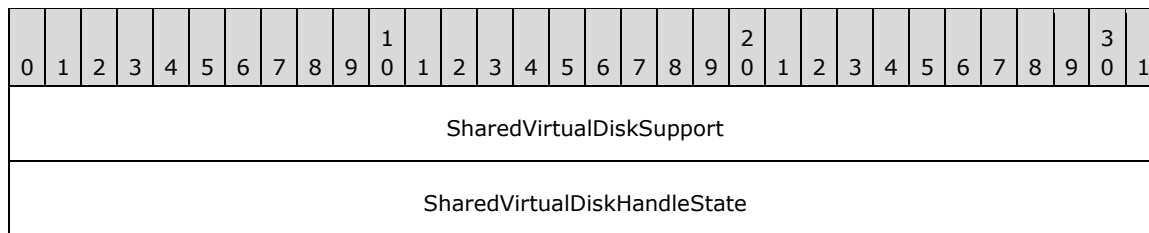
**VirtualSize (8 bytes):** A 64-bit unsigned integer that indicates the virtual size, in bytes, of the shared virtual disk.

#### 2.2.4.15 SVHDX\_SHARED\_VIRTUAL\_DISK\_SUPPORT\_REQUEST Structure

The **SVHDX\_SHARED\_VIRTUAL\_DISK\_SUPPORT\_REQUEST** packet is sent by the client to verify the status of shared virtual disk support on the Open. The request MUST NOT contain any payload.

#### 2.2.4.16 SVHDX\_SHARED\_VIRTUAL\_DISK\_SUPPORT\_RESPONSE Structure

The **SVHDX\_SHARED\_VIRTUAL\_DISK\_SUPPORT\_RESPONSE** packet is sent by the server in a response to an **SVHDX\_SHARED\_VIRTUAL\_DISK\_SUPPORT\_REQUEST** request.



**SharedVirtualDiskSupport (4 bytes):** This field is used to indicate the capabilities supported by the server. This field MUST contain one of the following values.

Value	Meaning
SharedVirtualDisksSupported 0x00000001	The server supports shared virtual disks.
SharedVirtualDiskCDPSnapshotsSupported 0x00000007	The server supports shared virtual disks and continuous data protection (log-based) snapshots.

**SharedVirtualDiskHandleState (4 bytes):** This field is used to indicate the state of the shared virtual disk Open. This field MUST contain one of the following values.

Value	Meaning
HandleStateNone 0x00000000	The Open is not opened as a shared virtual disk.
HandleStateFileShared 0x00000001	The shared virtual disk file is opened as a shared virtual disk by another Open.
HandleStateShared 0x00000003	The shared virtual disk file is opened as a shared virtual disk by this Open.

## 2.2.4.17 SVHDX\_META\_OPERATION\_START\_REQUEST Structure

The **SVHDX\_META\_OPERATION\_START\_REQUEST** packet is sent by the client to start a meta-operation on the shared virtual disk file.

0	1	2	3	4	5	6	7	8	9	10	11	12	13	14	15	16	17	18	19	20	21	22	23	24	25	26	27	28	29	30	31
TransactionId																															
...																															
...																															
...																															
OperationType																															
Padding																															
Data (variable)																															
...																															

**TransactionId (16 bytes):** Indicates the transaction ID for the operation. The field **MUST** be set to a globally unique ID for each meta-operation.

**OperationType (4 bytes):** Indicates the type of the operation. This field **MUST** contain one of the following values.

Value	Meaning
SvhdxMetaOperationTypeResize 0x00000000	The meta-operation requests that the target file be resized.
SvhdxMetaOperationTypeCreateSnapshot 0x00000001	The meta-operation is part of a snapshot creation process.
SvhdxMetaOperationTypeOptimize 0x00000002	The meta-operation requests that the server optimize the target file.
SvhdxMetaOperationTypeExtractVHD 0x00000003	The meta-operation requests that the server extract a <b>differentiating virtual hard disk (VHD)</b> from the target file.
SvhdxMetaOperationTypeConvertToVHDSets 0x00000004	The meta-operation requests that the given virtual disk file be converted to a VHD set.
SvhdxMetaOperationTypeApplySnapshot 0x00000005	The meta-operation requests that a specific snapshot be applied to a shared VHD Set.

**Padding (4 bytes):** This value **MUST** be set to 0 by the client and **MUST** be ignored by the server.



**Data (variable):** A variable-length field that contains the additional input specified by the **OperationType** field.

If the **OperationType** is **SvhdxMetaOperationTypeCreateSnapshot**, this field is provided in the format SVHDX\_META\_OPERATION\_CREATE as specified in section [2.2.4.17.1](#).

If the **OperationType** is **SvhdxMetaOperationTypeExtractVHD**, this field is provided in the format SVHDX\_META\_OPERATION\_EXTRACT as specified in section [2.2.4.17.2](#).

If the **OperationType** is **SvhdxMetaOperationTypeOptimize**, this field MUST be empty.

If the **OperationType** is **SvhdxMetaOperationTypeConvertToVHDSet**, this field is provided in the format SVHDX\_META\_OPERATION\_CONVERT\_TO\_VHDSET, as specified in section [2.2.4.17.3](#).

If the **OperationType** is **SvhdxMetaOperationTypeResize**, this field is provided in the format SVHDX\_META\_OPERATION\_RESIZE\_VIRTUAL\_DISK as specified in section [2.2.4.17.4](#).

### 2.2.4.17.1 SVHDX\_META\_OPERATION\_CREATE\_SNAPSHOT Structure

The SVHDX\_META\_OPERATION\_CREATE\_SNAPSHOT structure is used to send the additional parameters for snapshot creation.

0	1	2	3	4	5	6	7	8	9	10	11	12	13	14	15	16	17	18	19	20	21	22	23	24	25	26	27	28	29	30	31
SnapshotType																															
Flags																															
Stage1																															
Stage2																															
Stage3																															
Stage4																															
Stage5																															
Stage6																															
SnapshotId																															
...																															
...																															
...																															
ParametersPayloadSize																															

CdpParameters (Variable)
...

**SnapshotType (4 bytes):** The type of snapshot. This field MUST contain one of the values defined in section 2.2.6.

**Flags (4 bytes):** This field MUST be set to zero or a combination of the following values:

Name	Meaning
SVHDX_SNAPSHOT_DISK_FLAG_ENABLE_CHANGE_TRACKING 0x00000001	A request is made for change tracking to be enabled when snapshot is taken.

**Stage1 (4 bytes):** The first stage. This field MUST contain one of the following values.

Name	Meaning
SvhdxSnapshotStageInitialize 0x00000001	Perform any required initialization so that the appropriate type of snapshot can be taken.
SvhdxSnapshotStageBlockIO 0x00000002	Temporarily pause all IO against the target virtual device.
SvhdxSnapshotStageSwitchObjectStore 0x00000003	Switch aspects of the underlying object store so that the appropriate snapshot is taken.
SvhdxSnapshotStageUnblockIO 0x00000004	Allow further IO against the target virtual device.
SvhdxSnapshotStageFinalize 0x00000005	Tear down any state associated with a snapshot of the target virtual device.

**Stage2 (4 bytes):** The second stage. This field MUST be any of the values identified in **Stage1** or in **SvhdxSnapshotStageInvalid**, defined as follows.

Name	Meaning
SvhdxSnapshotStageInvalid 0x00000000	No stage present in this field.

**Stage3 (4 bytes):** The third stage. This field MUST be any of the values identified in **Stage1** or **SvhdxSnapshotStageInvalid**.

**Stage4 (4 bytes):** The fourth stage. This field MUST be any of the values identified in **Stage1** or **SvhdxSnapshotStageInvalid**.

**Stage5 (4 bytes):** The fifth stage. This field MUST be any of the values identified in **Stage1** or **SvhdxSnapshotStageInvalid**.

**Stage6 (4 bytes):** The sixth stage. This field MUST be any of the values identified in **Stage1** or **SvhdxSnapshotStageInvalid**.

**SnapshotId (16 bytes):** The ID to assign to the snapshot.

**ParametersPayloadSize (4 bytes):** The size of any parameters included with the create snapshot request. If the **SnapshotType** is **SvhdxSnapshotTypeVM**, then this field **MUST** be set to 0. If the **SnapshotType** is **SvhdxSnapshotTypeCDP**, then this field **MUST NOT** be set to 0.

**CdpParameters (variable):** Parameters supplied with the **continuous data protection snapshot (CDP snapshot)** operation. This field is provided in the format **SVHDX\_META\_OPERATION\_CREATE\_CDP\_PARAMETER** as specified in section [2.2.4.17.1.1](#).

### 2.2.4.17.1.1 SVHDX\_META\_OPERATION\_CREATE\_CDP\_PARAMETER Structure

SVHDX\_META\_OPERATION\_CREATE\_CDP\_PARAMETER is used to send additional CDP parameters.

0	1	2	3	4	5	6	7	8	9	10	11	12	13	14	15	16	17	18	19	20	21	22	23	24	25	26	27	28	29	30	31
LogFileNameOffset																															
LogFileId																															
...																															
...																															
...																															
LogFileName(Variable)																															
...																															

**LogFileNameOffset (4 bytes):** The offset, in bytes, of the **LogFileName** from the **CdpParameters** field specified in section [2.2.4.17.1](#).

**LogFileId (16 Bytes):** A GUID associated with the log file.

**LogFileName (Variable):** A log file name containing a null-terminated Unicode UTF-16 string.

### 2.2.4.17.2 SVHDX\_META\_OPERATION\_EXTRACT Structure

The **SVHDX\_META\_OPERATION\_EXTRACT** packet is issued by a server as part of a **SVHDX\_META\_OPERATION\_START\_REQUEST** operation, when the meta-operation type indicates an **SvhdxMetaOperationTypeExtractVHD**. The server issues such a request to export a virtual hard disk (VHD) or a differencing VHD.

0	1	2	3	4	5	6	7	8	9	10	11	12	13	14	15	16	17	18	19	20	21	22	23	24	25	26	27	28	29	30	31
SnapshotType																															
Padding																															
Flags																															

SourceSnapshotId
...
...
...
SourceLimitSnapshotId
...
...
...
DestinationVhdNameLength
DestinationVhdName (Variable)
...

**SnapshotType (4 bytes):** The type of snapshot. This field MUST contain one of the values defined in section [2.2.6](#).

**Padding (4 bytes):** This value MUST be set to 0 by the client and MUST be ignored by the server.

**Flags (4 bytes):** This field MUST be set to zero or more of the following values:

Name	Meaning
SVHDX_EXTRACT_SNAPSHOTS_FLAG_DELETE_ON_CLOSE 0x00000001	Request for the VHD set to be deleted on close after exporting the differences between specified snapshots.

**SourceSnapshotId (16 Bytes):** A GUID that indicates the ID of the snapshot to be used as the source for the extracted VHD.

**SourceLimitSnapshotId (16 Bytes):** A GUID that optionally indicates the ID of the snapshot that will act as the base for the extracted differencing VHD. Zero indicates that there MUST be no base snapshot and that the extracted disk will not be a differencing VHD.

**DestinationVhdNameLength (4 Bytes):** The length, in bytes, including the NULL terminating character, of the VHD file name to extract the data differences to.

**DestinationVhdName (Variable):** A buffer containing a null-terminated Unicode UTF-16 string that indicates the VHD file name to extract the data differences to.

### 2.2.4.17.3 SVHDX\_META\_OPERATION\_CONVERT\_TO\_VHDSET Structure

The SVHDX\_META\_OPERATION\_CONVERT\_TO\_VHDSET packet is issued by a server as part of a SVHDX\_META\_OPERATION\_START\_REQUEST operation, when the meta-operation type indicates a **SvhdxMetaOperationTypeConvertToVhdSet**. The server issues such a request to convert a VHD file to a snapshot-capable VHD set.

0	1	2	3	4	5	6	7	8	9	10	11	12	13	14	15	16	17	18	19	20	21	22	23	24	25	26	27	28	29	30	31
DestinationVhdSetNameLength																															
DestinationVhdSetName (Variable)																															
...																															

**DestinationVhdSetNameLength (4 Bytes):** The length, in bytes, including the NULL terminating character, of the **DestinationVhdSetName**.

**DestinationVhdSetName (Variable):** A buffer containing a null-terminated Unicode UTF-16 string that indicates the name for the new VHD set that is to be created.

#### 2.2.4.17.4 SVHDX\_META\_OPERATION\_RESIZE\_VIRTUAL\_DISK Structure

The SVHDX\_META\_OPERATION\_RESIZE\_VIRTUAL\_DISK packet is issued by a server as part of a SVHDX\_META\_OPERATION\_START\_REQUEST operation, when the meta-operation type indicates a **SvhdxMetaOperationTypeResize**. The server issues such a request to resize the shared virtual disk.

0	1	2	3	4	5	6	7	8	9	10	11	12	13	14	15	16	17	18	19	20	21	22	23	24	25	26	27	28	29	30	31
NewSize																															
...																															
ExpandOnly								AllowUnsafeVirtualSize								ShrinkToMinimumSafeSize								Reserved							

**NewSize (8 bytes):** This specifies the new size of the shared virtual disk.

**ExpandOnly (1 byte):** A Boolean value, where zero represents FALSE and nonzero represents TRUE. A nonzero value indicates that the shared virtual disk size can only expand.

**AllowUnsafeVirtualSize (1 byte):** A Boolean value, where zero represents FALSE and nonzero represents TRUE. A nonzero value indicates that the shared virtual disk size can be less than the data it currently contains.

**ShrinkToMinimumSafeSize (1 byte):** A Boolean value, where zero represents FALSE and nonzero represents TRUE. A nonzero value indicates that the shared virtual disk size can be shrunk to the data it currently contains.

**Reserved (1 byte):** This value MUST be set to 0 by the client and MUST be ignored by the server.

#### 2.2.4.18 SVHDX\_META\_OPERATION\_REPLY Structure

The **SVHDX\_META\_OPERATION\_REPLY** packet is issued by a server in reply to an **SVHDX\_META\_OPERATION\_START\_REQUEST** operation. When the meta-operation type indicates

an **SvhdxMetaOperationTypeCreateSnapshot** with snapshot type **SvhdxSnapshotTypeCDP**, this structure is returned. Otherwise, this structure is not present.

0	1	2	3	4	5	6	7	8	9	10	11	12	13	14	15	16	17	18	19	20	21	22	23	24	25	26	27	28	29	30	31
ChangeTrackingErrorStatus																															

**ChangeTrackingErrorStatus (4 bytes):** Indicates an error condition when attempting to perform change-tracking operations. This MUST be one of the following values.

Name	Meaning
SVHDX_TUNNEL_CHANGE_TRACKING_STATUS_SUCCESS 0x00000000	Change-tracking is active on the virtual disk without any error.
SVHDX_TUNNEL_CHANGE_TRACKING_NOT_INITIALIZED 0xC03A0020	Change-tracking is not initialized on the virtual disk.
SVHDX_TUNNEL_CHANGE_TRACKING_LOGSIZE_EXCEEDED_MAXSIZE 0xC03A0021	The log file size has exceeded the client specified maximum size.
SVHDX_TUNNEL_CHANGE_TRACKING_VHD_CHANGED_OFFLINE 0xC03A0022	A virtual disk write was detected to be missing from the current log file.
SVHDX_TUNNEL_CHANGE_TRACKING_INVALID_TRACKING_STATE 0xC03A0023	A change-tracking operation cannot be performed on the virtual disk in its current state.
SVHDX_TUNNEL_CHANGE_TRACKING_INCONSISTENT_TRACKING_FILE 0xC03A0024	An inconsistent log file detected.

### 2.2.4.19 SVHDX\_TUNNEL\_VHDSET\_QUERY\_INFORMATION\_REQUEST Structure

The **SVHDX\_TUNNEL\_VHDSET\_QUERY\_INFORMATION\_REQUEST** packet is sent by a client as part of an **RSVD\_TUNNEL\_VHDSET\_QUERY\_INFORMATION** request.

0	1	2	3	4	5	6	7	8	9	10	11	12	13	14	15	16	17	18	19	20	21	22	23	24	25	26	27	28	29	30	31
VHDSetInformationType																															
SnapshotType																															
SnapshotId																															
...																															
...																															

...

**VHDSetInformationType (4 bytes):** The information type requested. This MUST be one of the following values.

Name	Meaning
SvhdxVHDSetInformationTypeSnapshotList 0x00000002	Returns a list of snapshots.
SvhdxVHDSetInformationTypeSnapshotEntry 0x00000005	Returns the details about a specific snapshot entry.
SvhdxVHDSetInformationTypeOptimizeNeeded 0x00000008	Queries whether the target VHD set needs optimization.
SvhdxVHDSetInformationTypeCdpSnapshotRoot 0x00000009	Returns the oldest CDP snapshot present in the target VHD set.
SvhdxVHDSetInformationTypeCdpSnapshotActiveList 0x0000000A	Returns the list of CDP snapshot IDs that are active for the VHD set.
SvhdxVHDSetInformationTypeCdpSnapshotInactiveList 0x0000000C	Returns the list of CDP snapshot IDs that are inactive in the VHD set.

**SnapshotType (4 bytes):** The snapshot type queried by this operation. This MUST be one of the **SvhdxSnapshotType** values identified.

**SnapshotId (16 bytes):** The snapshot ID relevant to the particular request.

**2.2.4.20 SVHDX\_TUNNEL\_VHDSET\_QUERY\_INFORMATION\_SNAPSHOT\_LIST\_RESPONSE Structure**

The **SVHDX\_TUNNEL\_VHDSET\_QUERY\_INFORMATION\_SNAPSHOT\_LIST\_RESPONSE** packet is sent by a server in response to an **RSVD\_TUNNEL\_VHDSET\_QUERY\_INFORMATION** request where the **VHDSetInformationType** is **SvhdxVHDSetInformationTypeSnapshotList**.

0	1	2	3	4	5	6	7	8	9	10	11	12	13	14	15	16	17	18	19	20	21	22	23	24	25	26	27	28	29	30	31
VHDSetInformationType																															
Padding																															
ResponseComplete																Reserved															
NumberOfSnapshots																															
SnapshotIds (Variable)																															
...																															

**VHDSetInformationType (4 bytes):** The information type. The server MUST set this to SvhdvVHDSetInformationTypeSnapshotList.

**Padding (4 bytes):** This field is set to any value by the server and MUST be ignored by the client.

**ResponseComplete (1 byte):** Indicates if the reply contains all snapshot IDs in the **SnapshotIds** field. Zero (0x00) indicates that the **SnapshotIds** field is not present. One (0x01) indicates that all snapshot IDs are present in the **SnapshotIds** field.

**Reserved (3 bytes):** This field MUST be set to 0 by the server and MUST be ignored by the client.

**NumberOfSnapshots (4 bytes):** The number of snapshots contained in the **SnapshotIds** field.

**SnapshotIds (Variable):** A list of IDs of all snapshots of a particular type. This field contains a list of GUIDs that define each snapshot ID. The number of snapshot IDs in the field is specified by the **NumberOfSnapshots** fields.

### 2.2.4.21 SVHDX\_TUNNEL\_VHDSET\_QUERY\_INFORMATION\_SNAPSHOT\_ENTRY\_RESPONSE Structure

The **SVHDX\_TUNNEL\_VHDSET\_QUERY\_INFORMATION\_SNAPSHOT\_ENTRY\_RESPONSE** packet is sent by a server in response to an **RSVD\_TUNNEL\_VHDSET\_QUERY\_INFORMATION** request where the **VHDSetInformationType** is **SvhdvVHDSetInformationTypeSnapshotEntry**.

0	1	2	3	4	5	6	7	8	9	10	11	12	13	14	15	16	17	18	19	20	21	22	23	24	25	26	27	28	29	30	31
VHDSetInformationType																															
SnapshotCreationTime																															
...																															
SnapshotType																															
IsValidSnapshot																															
SnapshotId																															
...																															
...																															
...																															
ParentSnapshotId																															
...																															
...																															



...
LogFileId
...
...
...

**VHDSetInformationType (4 bytes):** The information type. The server MUST set this to SvhdXSetInformationTypeSnapshotEntry.

**SnapshotCreationTime (8 bytes):** The time, in milliseconds since Jan 1, 1970, when the snapshot was created.

**SnapshotType (4 bytes):** The type of snapshot. This MUST be one of the SvhdXSnapshotType values defined in section 2.2.6.

**IsValidSnapshot (4 bytes):** Set to 1 when the snapshot is valid; set to 0 when the snapshot is invalid.

**SnapshotId (16 bytes):** The globally unique ID of the snapshot.

**ParentSnapshotId (16 bytes):** The parent snapshot ID. This field will be set for CDP snapshots.

**LogFileId (16 bytes):** The ID of the log file associated with this snapshot. This field will be set for CDP snapshots.

#### 2.2.4.22 SVHDX\_TUNNEL\_VHDSET\_QUERY\_INFORMATION\_OPTIMIZE\_RESPONSE Structure

The SVHDX\_TUNNEL\_VHDSET\_QUERY\_INFORMATION\_OPTIMIZE\_RESPONSE packet is sent by a server in response to an RSVD\_TUNNEL\_VHDSET\_QUERY\_INFORMATION request where the VHDSetInformationType is VHDsvhdXSetInformationTypeOptimizeNeeded.

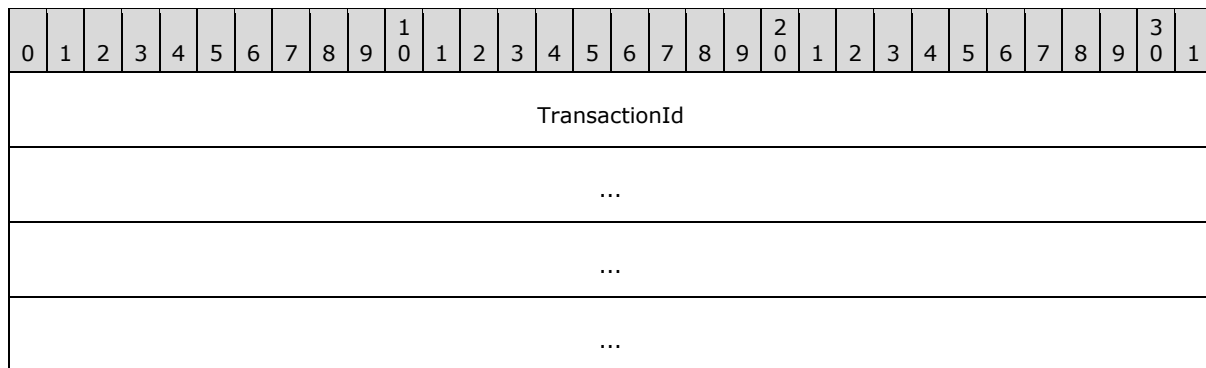
0	1	2	3	4	5	6	7	8	9	10	11	12	13	14	15	16	17	18	19	20	21	22	23	24	25	26	27	28	29	30	31
VHDSetInformationType																															
OptimizeNeeded																															

**VHDSetInformationType (4 bytes):** The information type. The server MUST set this to SvhdXVHDSetInformationTypeOptimizeNeeded.

**OptimizeNeeded (4 bytes):** Indicates whether optimization is needed for the target VHD set.

#### 2.2.4.23 SVHDX\_META\_OPERATION\_QUERY\_PROGRESS\_REQUEST Structure

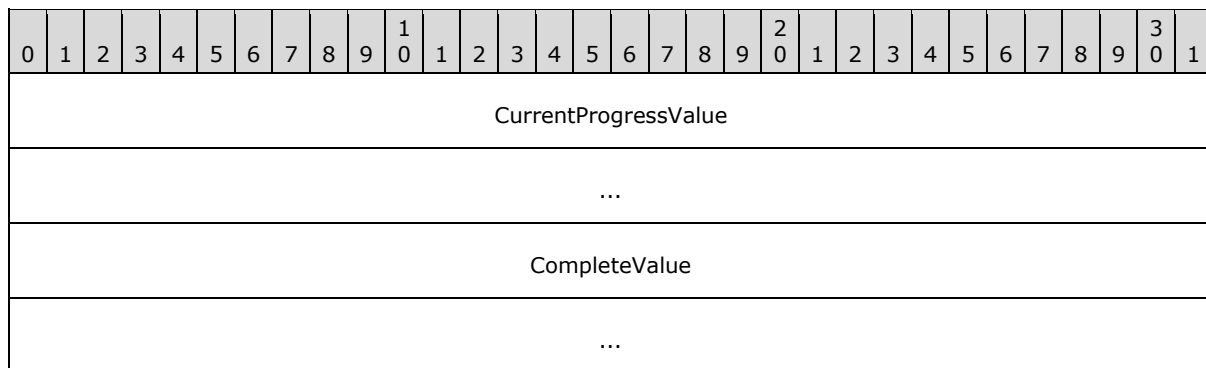
The SVHDX\_META\_OPERATION\_QUERY\_PROGRESS\_REQUEST packet is sent by the client to query the progress of an ongoing meta-operation.



**TransactionId (16 bytes):** Indicates the transaction ID for the operation. This is the transaction ID used in the RSVD\_TUNNEL\_META\_OPERATION\_START request.

#### 2.2.4.24 SVHDX\_META\_OPERATION\_QUERY\_PROGRESS\_RESPONSE Structure

The **SVHDX\_META\_OPERATION\_QUERY\_PROGRESS\_RESPONSE** packet is sent by the server in response to a RSVD\_TUNNEL\_META\_OPERATION\_QUERY\_PROGRESS request.

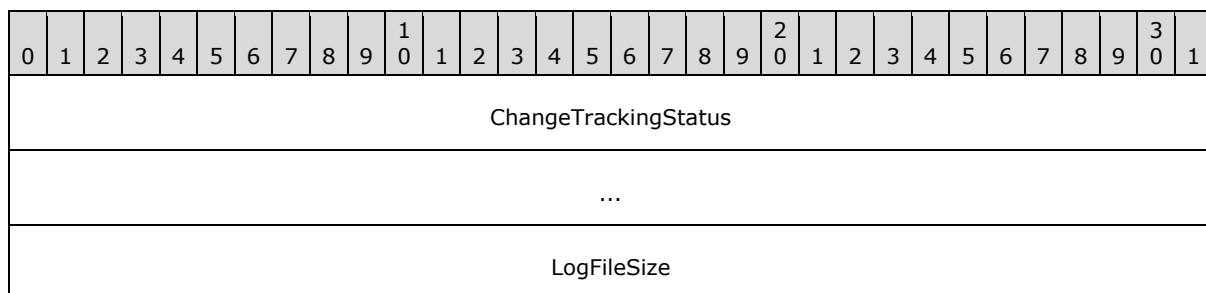


**CurrentProgressValue (8 bytes):** A server-defined progress value that indicates how far along the meta-operation has proceeded.

**CompleteValue (8 bytes):** The maximum progress value for the completed operation. That is, when **CurrentProgressValue** is equal to **CompleteValue**, the operation is complete.

#### 2.2.4.25 SVHDX\_CHANGE\_TRACKING\_GET\_PARAMETERS\_RESPONSE Structure

The **SVHDX\_CHANGE\_TRACKING\_GET\_PARAMETERS\_RESPONSE** packet is sent by the server in response to a RSVD\_TUNNEL\_CHANGE\_TRACKING\_GET\_PARAMETERS operation.



...

**ChangeTrackingStatus (8 bytes):** The current status of change tracking on the server. This MUST be one of the error codes specified in section [2.2.3](#).

**LogFileSize (8 bytes):** The number of bytes consumed by the log file used to conduct change tracking.

**2.2.4.26 SVHDX\_TUNNEL\_DELETE\_SNAPSHOT\_REQUEST Structure**

The **SVHDX\_TUNNEL\_DELETE\_SNAPSHOT\_REQUEST** packet is sent by a client to delete a snapshot from a shared virtual disk file.

0	1	2	3	4	5	6	7	8	9	10	11	12	13	14	15	16	17	18	19	20	21	22	23	24	25	26	27	28	29	30	31
SnapshotId																															
...																															
...																															
...																															
PersistReference																															
SnapshotType																															

**SnapshotId (16 bytes):** The snapshot ID relevant to the particular request.

**PersistReference (4 bytes):** A flag to indicate if the snapshot needs to be persisted. One represents TRUE (0x00000001), indicating that the snapshot will be stored as a reference without any data. Zero represents FALSE (0x00000000), indicating that the snapshot will be deleted. This field MUST be set to FALSE if **SnapshotType** is **SvhdxSnapshotTypeVM**.

**SnapshotType (4 bytes):** The type of snapshot. This MUST be one of the **SvhdxSnapshotType** values defined in section [2.2.6](#).

**2.2.4.27 SVHDX\_CHANGE\_TRACKING\_START\_REQUEST Structure**

The **SVHDX\_CHANGE\_TRACKING\_START\_REQUEST** packet is sent by the client to start change tracking on the server. The packet contains the following fields.

0	1	2	3	4	5	6	7	8	9	10	11	12	13	14	15	16	17	18	19	20	21	22	23	24	25	26	27	28	29	30	31
TransactionId																															
...																															
...																															

...
LogFileNameLength
LogFileId
...
...
...
MaxLogFileSize
AppendData
LogFileName (Variable)
...

**TransactionId (16 bytes):** The client MUST set this to a globally unique transaction ID for each operation.

**LogFileNameLength (4 bytes):** The length, in bytes, of the name string. This length MUST include a NULL terminating character.

**LogFileId (16 bytes):** A globally unique Id used to refer to this log file.

**MaxLogFileSize (8 bytes):** The maximum allowed size, in bytes, of the underlying object store for this particular change-tracking log file.

**AppendData (4 byte):** When set to TRUE, change tracking will be resumed, and further tracked data will be appended to the existing log file. The client should set this to FALSE for the first change-tracking request issued against the target device.

**LogFileName (Variable):** The name of the log file containing a null-terminated Unicode UTF-16 string.

#### 2.2.4.28 SVHDX\_CHANGE\_TRACKING\_START\_RESPONSE Structure

The **SVHDX\_CHANGE\_TRACKING\_START\_RESPONSE** packet is sent by the server in response to an RSVD\_TUNNEL\_CHANGE\_TRACKING\_START operation. This response MUST NOT contain any payload.

#### 2.2.4.29 SVHDX\_CHANGE\_TRACKING\_STOP\_REQUEST Structure

The **SVHDX\_CHANGE\_TRACKING\_STOP\_REQUEST** packet is sent by the client to stop change tracking on the server. This request MUST NOT contain any payload.

### 2.2.4.30 SVHDX\_CHANGE\_TRACKING\_STOP\_RESPONSE Structure

The **SVHDX\_CHANGE\_TRACKING\_STOP\_RESPONSE** packet is sent by the server in response to an RSVD\_TUNNEL\_CHANGE\_TRACKING\_STOP operation. This response MUST NOT contain any payload.

### 2.2.4.31 SVHDX\_OPEN\_DEVICE\_CONTEXT\_RESPONSE Structure

The SVHDX\_OPEN\_DEVICE\_CONTEXT\_RESPONSE packet is sent by the server in response to open the shared virtual disk request.

0	1	2	3	4	5	6	7	8	9	0	1	2	3	4	5	6	7	8	9	0	1	2	3	4	5	6	7	8	9	0	1
Version																															
HasInitiatorId										Reserved																					
InitiatorId																															
...																															
...																															
...																															
Flags																															
OriginatorFlags																															
OpenRequestId																															
...																															
InitiatorHostNameLength																InitiatorHostName (126 bytes)															
...																															
...																															

**Version (4 bytes):** The version of the create context. It MUST be set to the highest supported version of the protocol, as specified in section [1.7](#).

**HasInitiatorId (1 byte):** A Boolean value, where zero represents FALSE and nonzero represents TRUE.

**Reserved (3 bytes):** This field MUST be set to zero when sent and MUST be ignored on receipt.

**InitiatorId (16 bytes):** A GUID that optionally identifies the initiator of the open request.

**Flags (4 bytes):** Reserved. The client SHOULD set this field to 0x00000000, and the server MUST ignore it on receipt.

**OriginatorFlags (4 bytes):** This field is used to indicate which component has originated or issued the operation. This field MUST be set to one of the following values.

Name	Meaning
SVHDX_ORIGINATOR_PVHDPARSER 0x00000001	Shared virtual disk file to be opened as a virtual SCSI disk device
SVHDX_ORIGINATOR_VHDMP 0x00000004	Shared virtual disk file to be opened in underlying object store

**OpenRequestId (8 bytes):** A 64-bit value assigned by the client for an outgoing request. The server MUST ignore it on receipt.

**InitiatorHostNameLength (2 bytes):** The length, in bytes, of the **InitiatorHostName**. This value MUST be less than or equal to RSVD\_MAXIMUM\_NAME\_LENGTH.

**InitiatorHostName (126 bytes):** A 126-byte buffer containing a null-terminated Unicode UTF-16 string that specifies the computer name which initiated the request.

### 2.2.4.32 SVHDX\_OPEN\_DEVICE\_CONTEXT\_V2 Structure

The SVHDX\_OPEN\_DEVICE\_CONTEXT\_V2 packet is sent by the client to open the shared virtual disk.

This is valid only for the RSVD Protocol version 2.

0	1	2	3	4	5	6	7	8	9	10	11	12	13	14	15	16	17	18	19	20	21	22	23	24	25	26	27	28	29	30	31
Version																															
HasInitiatorId										Reserved																					
InitiatorId																															
...																															
...																															
...																															
Flags																															
OriginatorFlags																															
OpenRequestId																															
...																															
InitiatorHostNameLength																InitiatorHostName (126 bytes)															
...																															
...																															
VirtualDiskPropertiesInitialized																															

ServerServiceVersion
VirtualSectorSize
PhysicalSectorSize
VirtualSize
...

**Version (4 bytes):** The version of the create context. It MUST be set to 0x00000002.

**HasInitiatorId (1 byte):** A Boolean value, where zero represents FALSE and nonzero represents TRUE.

**Reserved (3 bytes):** This field MUST be set to zero when sent and MUST be ignored on receipt.

**InitiatorId (16 bytes):** A GUID that optionally identifies the initiator of the open request.

**Flags (4 bytes):** Reserved. The client SHOULD set this field to 0x00000000, and the server MUST ignore it on receipt.

**OriginatorFlags (4 bytes):** This field is used to indicate which component has originated or issued the operation. This field MUST be set to one of the following values:

Name	Meaning
SVHDX_ORIGINATOR_PVHDPARSER 0x00000001	Shared virtual disk file to be opened as a virtual SCSI disk device
SVHDX_ORIGINATOR_VHDMP 0x00000004	Shared virtual disk file to be opened in underlying object store

**OpenRequestId (8 bytes):** A 64-bit value assigned by the client for an outgoing request. The server MUST ignore it on receipt.

**InitiatorHostNameLength (2 bytes):** The length, in bytes, of the **InitiatorHostName**. This value MUST be less than or equal to RSVD\_MAXIMUM\_NAME\_LENGTH.

**InitiatorHostName (126 bytes):** A 126-byte buffer containing a null-terminated Unicode UTF-16 string that specifies the computer name on which the initiator resides.

**VirtualDiskPropertiesInitialized (4 bytes):** This field MUST be set to zero.

**ServerServiceVersion (4 bytes):** This field MUST be set to zero.

**VirtualSectorSize (4 bytes):** This field MUST be set to zero.

**PhysicalSectorSize (4 bytes):** This field MUST be set to zero.

**VirtualSize (8 bytes):** This field MUST be set to zero.

### 2.2.4.33 SVHDX\_OPEN\_DEVICE\_CONTEXT\_V2\_RESPONSE Structure

The SVHDX\_OPEN\_DEVICE\_CONTEXT\_RESPONSE\_V2 packet is sent by the server in response to open the shared virtual disk request.

This is valid only for the RSVD Protocol version 2.

0	1	2	3	4	5	6	7	8	9	10	11	12	13	14	15	16	17	18	19	20	21	22	23	24	25	26	27	28	29	30	31
Version																															
HasInitiatorId										Reserved																					
InitiatorId																															
...																															
...																															
...																															
Flags																															
OriginatorFlags																															
OpenRequestId																															
...																															
InitiatorHostNameLength																InitiatorHostName (126 bytes)															
...																															
...																															
VirtualDiskPropertiesInitialized																															
ServerServiceVersion																															
VirtualSectorSize																															
PhysicalSectorSize																															
VirtualSize																															
...																															

**Version (4 bytes):** The version of the create context received.

**HasInitiatorId (1 byte):** A Boolean value, where zero represents FALSE and nonzero represents TRUE.

**Reserved (3 bytes):** This field MUST be set to zero when sent and MUST be ignored on receipt.

**InitiatorId (16 bytes):** A GUID that optionally identifies the initiator of the open request.



**Flags (4 bytes):** Reserved. The client SHOULD set this field to 0x00000000, and the server MUST ignore it on receipt.

**OriginatorFlags (4 bytes):** This field is used to indicate which component has originated or issued the operation. This field MUST be set to one of the following values:

Name	Meaning
SVHDX_ORIGINATOR_PVHDPARSER 0x00000001	Shared virtual disk file to be opened as a virtual SCSI disk device
SVHDX_ORIGINATOR_VHDMP 0x00000004	Shared virtual disk file to be opened in underlying object store

**OpenRequestId (8 bytes):** A 64-bit value assigned by the client for an outgoing request. The server MUST ignore it on receipt.

**InitiatorHostNameLength (2 bytes):** The length, in bytes, of the **InitiatorHostName**. This value MUST be less than or equal to RSVD\_MAXIMUM\_NAME\_LENGTH.

**InitiatorHostName (126 bytes):** A 126-byte buffer containing a null-terminated Unicode UTF-16 string that specifies the computer name which initiated the request.

**VirtualDiskPropertiesInitialized (4 bytes):** A field that indicates whether **ServerVersion**, **VirtualSectorSize**, **PhysicalSectorSize** and **VirtualSize** fields are updated. A nonzero value indicates TRUE.

**ServerServiceVersion (4 bytes):** The current version of the protocol running on the server.

**VirtualSectorSize (4 bytes):** The virtual sector size of the virtual disk.

**PhysicalSectorSize (4 bytes):** The physical sector size of the virtual disk.

**VirtualSize (8 bytes):** The current length of the virtual disk, in bytes.

#### 2.2.4.34 RSVD\_BLOCK\_DEVICE\_TARGET\_SPECIFIER Structure

RSVD\_BLOCK\_DEVICE\_TARGET\_SPECIFIER structure is used to read from a particular snapshot.

0	1	2	3	4	5	6	7	8	9	10	11	12	13	14	15	16	17	18	19	20	21	22	23	24	25	26	27	28	29	30	31
RsvdBlockDeviceTargetNamespace																															
TargetInformationSnapshot																															
...																															
...																															
...																															
...																															

**RsvdBlockDeviceTargetNamespace (4 bytes):** This field is used to indicate the target namespace. This field MUST be set to one of the following values.

Name	Meaning
SnapshotId 0x00000000	The target identifier is a snapshot ID.

**TargetInformationSnapshot(20 bytes):** An RSVD\_BLOCK\_DEVICE\_TARGET\_SPECIFIER\_SNAPSHOT structure defined in section [2.2.4.35](#).

### 2.2.4.35 RSVD\_BLOCK\_DEVICE\_TARGET\_SPECIFIER\_SNAPSHOT Structure

The RSVD\_BLOCK\_DEVICE\_TARGET\_SPECIFIER\_SNAPSHOT structure is used to specify the snapshot to open when opening the virtual disk as a block device.

0	1	2	3	4	5	6	7	8	9	10	11	12	13	14	15	16	17	18	19	20	21	22	23	24	25	26	27	28	29	30	31
SnapshotType																															
SnapshotID																															
...																															
...																															
...																															

**SnapshotType (4 bytes):** The type of snapshot. This field MUST contain one of the values defined in section [2.2.6](#).

**SnapshotID (16 bytes):** A GUID that identifies the snapshot to open.

### 2.2.4.36 SVHDX\_APPLY\_SNAPSHOT\_PARAMS Structure

The SVHDX\_APPLY\_SNAPSHOT\_PARAMS structure is used to specify the snapshot to apply.

0	1	2	3	4	5	6	7	8	9	10	11	12	13	14	15	16	17	18	19	20	21	22	23	24	25	26	27	28	29	30	31
SnapshotType																															
SnapshotID																															
...																															
...																															
...																															

**SnapshotType (4 bytes):** The type of snapshot. This field MUST contain one of the values defined in section [2.2.6](#).

**SnapshotID (16 bytes):** A GUID that identifies the snapshot to open.

### 2.2.4.37 SVHDX\_TUNNEL\_QUERY\_VIRTUAL\_DISK\_CHANGES\_REQUEST Structure

The SVHDX\_TUNNEL\_QUERY\_VIRTUAL\_DISK\_CHANGES\_REQUEST structure requests a list of changed ranges since the designated snapshot.

0	1	2	3	4	5	6	7	8	9	10	11	12	13	14	15	16	17	18	19	20	21	22	23	24	25	26	27	28	29	30	31
TargetSnapshotId																															
...																															
...																															
...																															
LimitSnapshotId																															
...																															
...																															
...																															
SnapshotType																															
ByteOffset																															
...																															
ByteLength																															
...																															

**TargetSnapshotId (16 bytes):** A GUID that identifies the snapshot to query for the changed ranges.

**LimitSnapshotId (16 bytes):** A GUID that identifies the snapshot to use as a baseline for getting the list of changed ranges.

**SnapshotType (4 bytes):** The type of snapshot. This field MUST contain one of the values defined in section [2.2.6](#).

**ByteOffset (8 bytes):** The byte offset of the region in the virtual disk to query changes for.

**ByteLength (8 bytes):** The length, in bytes, of the region in the virtual disk to query changes for.

### 2.2.4.38 SVHDX\_TUNNEL\_QUERY\_VIRTUAL\_DISK\_CHANGES\_REPLY Structure

The SVHDX\_TUNNEL\_QUERY\_VIRTUAL\_DISK\_CHANGES\_REPLY structure is sent as a response to the virtual disk changes query.

0	1	2	3	4	5	6	7	8	9	0	1	2	3	4	5	6	7	8	9	0	1	2	3	4	5	6	7	8	9	0	1
ProcessedByteLength																															
...																															
RangeCount																															
Reserved																															
Ranges (Variable)																															
...																															

**ProcessedByteLength (8 bytes):** The total byte length that was processed. This can be **ByteLength** from the SVHDX\_TUNNEL\_QUERY\_VIRTUAL\_DISK\_CHANGES\_REQUEST or a smaller value, if the provided buffer was not large enough to contain all the information that was available about the requested virtual disk region.

**RangeCount (4 bytes):** The number of changed ranges in the specified virtual disk region.

**Reserved (4 bytes):** Reserved. The server MUST set this field to zero and the client MUST ignore it on receipt.

**Ranges (Variable):** The list of SVHDX\_VIRTUAL\_DISK\_CHANGED\_RANGE structures, as defined in section [2.2.4.39](#), representing the changed ranges in the specified virtual disk region.

### 2.2.4.39 SVHDX\_VIRTUAL\_DISK\_CHANGED\_RANGE Structure

The SVHDX\_VIRTUAL\_DISK\_CHANGED\_RANGE structure contains the details of the changed range.

0	1	2	3	4	5	6	7	8	9	0	1	2	3	4	5	6	7	8	9	0	1	2	3	4	5	6	7	8	9	0	1
ByteOffset																															
...																															
ByteLength																															
...																															
Reserved																															
...																															

**ByteOffset (8 bytes):** The byte offset of the changed range in the virtual disk.

**ByteLength (8 bytes):** The length, in bytes, of the changed range in the virtual disk.

**Reserved (8 bytes):** Reserved. The server MUST set this field to zero and the client MUST ignore it on receipt.

## 2.2.5 SRB Status Code

The following is a list of possible SRB error messages used to communicate from server to client.

Value	Meaning
0x01	The request was completed successfully.
0x02	The request was aborted.
0x06	The Shared Virtual Disk does not support the given request.
0x08	The Shared Virtual Disk device is no longer available.
0x0A	The SCSI device selection timed out.
0x12	A data overrun or underrun error occurred.
0x04	The request completed with any other error.

## 2.2.6 Snapshot Types

Following are the possible snapshot types.

Name	Meaning
SvhdxSnapshotTypeVM 0x01	A snapshot created as part of routine Virtual Machine operations.
SvhdxSnapshotTypeCDP 0x03	A snapshot created as part of a continuous data protection (CDP) process.
SvhdxSnapshotTypeWriteable 0x04	A snapshot created as a writable snapshot.

## 3 Protocol Details

### 3.1 Client Details

#### 3.1.1 Abstract Data Model

##### 3.1.1.1 Global

The client MUST implement the following:

**ClientServiceVersion**: The highest protocol version supported by the client.

**RequestIdentifier**: An unsigned 64-bit value assigned by the client for an outgoing request.

##### 3.1.2 Timers

None.

##### 3.1.3 Initialization

The client MUST initialize **ClientServiceVersion** to an implementation-specific [<2>](#) administratively configured protocol version.

**RequestIdentifier**: SHOULD [<3>](#) be initialized to an implementation-specific value.

##### 3.1.4 Higher-Layer Triggered Events

###### 3.1.4.1 Sending Any Outgoing Message

The Client MUST increment **RequestIdentifier** by 1, for every outgoing tunnel operation specified in section [2.2.2](#).

###### 3.1.4.2 Application Requests Opening a Shared Virtual Disk

The application provides the following:

- The name of the server to connect to.
- The name of the share to connect to.
- InitiatorId to uniquely identify the initiator (optional).
- User credentials, an opaque implementation-specific entity that identifies the credentials to be used when authenticating to the remote server.
- The shared virtual disk file name to open.
- The flags for open command (optional).
- The Initiator host name.
- A Boolean that, if set, requires the shared virtual disk file to be opened as virtual SCSI disk.

Upon successful completion, the client MUST return a handle to the application.

If **ClientServiceVersion** is RSVD Protocol version 1, the client MUST construct an SVHDX\_OPEN\_DEVICE\_CONTEXT as specified in section [2.2.4.12](#), or if **ClientServiceVersion** is RSVD Protocol version 2, the client MUST construct an SVHDX\_OPEN\_DEVICE\_CONTEXT\_V2 as specified in section [2.2.4.32](#) and MUST be initialized as follows:

- The **InitiatorId** field is set to the application-provided InitiatorId, if any. Otherwise, **InitiatorId** is set to zero.
- The **HasInitiatorId** field is set to TRUE if the application provides initiator Id; otherwise set to FALSE.
- The **Flags** field is set to application-provided flags.
- If the application requires the shared virtual disk file to be opened as a virtual SCSI disk device, the client MUST set **OriginatorFlags** to SVHDX\_ORIGINATOR\_PVHDPARSER. Otherwise, it MUST be set to SVHDX\_ORIGINATOR\_VHDMP.
- The **OpenRequestId** is set to **RequestIdentifier**.
- The **InitiatorHostNameLength** is set to **InitiatorHostName** length, in bytes.
- The **InitiatorHostName** is set to the application-provided initiator name. If **InitiatorHostNameLength** is less than 126 bytes, the remaining bytes in the buffer MUST be set to zero.

The client MUST append ":SharedVirtualDisk" at the end of the file name.

The client MUST establish a connection to the server by calling the interface specified in [\[MS-SMB2\]](#) section 3.2.4.2 and providing the following input parameters:

- The application-provided server name.
- The application-provided share name.
- The application-provided user credentials.

If the connection is successfully established, the client MUST open the shared virtual disk file by calling the interface specified in [\[MS-SMB2\]](#) section 3.2.4.3 and provide the following input parameters:

- File name
- The SVHDX\_OPEN\_DEVICE\_CONTEXT Create context if **ClientServiceVersion** is RSVD Protocol version 1 or SVHDX\_OPEN\_DEVICE\_CONTEXT\_V2 Create context if **ClientServiceVersion** is RSVD Protocol version 2
- **CreateOptions** as specified in [\[MS-SMB2\]](#) section 2.2.13 with the FILE\_NO\_INTERMEDIATE\_BUFFERING bit set

If there are any errors from the preceding call, return the error to the caller.

### 3.1.4.3 Application Requests Closing a Shared Virtual Disk

The application provides:

- A handle to the **Open** identifying the shared virtual disk file.

The client MUST call the interface specified in [\[MS-SMB2\]](#) section 3.2.4.5 to close the open on the shared virtual disk file, supplying the application-provided handle.

### 3.1.4.4 Application Requests Reading From a Shared Virtual Disk

The application provides:

- A handle to the **Open** identifying the shared virtual disk file.
- The offset, in bytes, from the beginning of the virtual disk from which to read data.
- The number of bytes to read.
- The minimum number of bytes to be read (optional).
- The buffer to receive the data.

The client MUST call the interface specified in [\[MS-SMB2\]](#) section 3.2.4.6, supplying the application-provided parameters

### 3.1.4.5 Application Requests Writing To a Shared Virtual Disk

The application provides:

- A handle to the **Open** identifying a shared virtual disk file.
- The offset, in bytes, from the beginning of the virtual disk where data should be written.
- The number of bytes to write.
- A buffer containing the bytes to be written.

The client MUST call the interface specified in [\[MS-SMB2\]](#) section 3.2.4.7, supplying the application-provided parameters.

### 3.1.4.6 Application Requests Virtual Disk File information

The application provides:

- A handle to the **Open** identifying a shared virtual disk file.
- The maximum output buffer size that it will accept.

The client MUST construct an SVHDX\_TUNNEL\_INITIAL\_INFO\_REQUEST structure, as specified in section [2.2.4.13](#) as follows:

The SVHDX\_TUNNEL\_OPERATION\_HEADER MUST be initialized as follows:

- The **OperationCode** MUST be set to RSVD\_TUNNEL\_GET\_INITIAL\_INFO\_OPERATION.
- The **Status** field MUST be set to zero.
- The **RequestId** field MUST be set to **RequestIdentifier**.

The client MUST call the interface specified in [\[MS-SMB2\]](#) section 3.2.4.20.11, supplying the following input parameters:

- Application-provided handle to identify the **Open**.
- Control code: FSCTL\_SVHDX\_SYNC\_TUNNEL\_REQUEST.
- SVHDX\_TUNNEL\_OPERATION\_HEADER structure as payload.
- The maximum output buffer size that it will accept.



### 3.1.4.7 Application Requests Connection Status

The application provides:

- A handle to the **Open** identifying a shared virtual disk file.

The client MUST construct an SVHDX\_TUNNEL\_CHECK\_CONNECTION\_REQUEST structure, as specified in section [2.2.4.1](#) as follows:

The SVHDX\_TUNNEL\_OPERATION\_HEADER MUST be initialized as follows:

- The **OperationCode** MUST be set to RSVD\_TUNNEL\_CHECK\_CONNECTION\_STATUS\_OPERATION.
- The **Status** field MUST be set to zero.
- The **RequestId** field MUST be set to **RequestIdentifier**.

The client MUST call the interface specified in [\[MS-SMB2\]](#) section 3.2.4.20.11, supplying the following input parameters:

- Application-provided handle to identify the **Open**.
- Control code: FSCTL\_SVHDX\_SYNC\_TUNNEL\_REQUEST.
- SVHDX\_TUNNEL\_OPERATION\_HEADER as payload.

### 3.1.4.8 Application Requests Shared Virtual Disk Information

The application provides:

- A handle to the **Open** identifying a shared virtual disk file.

The client MUST construct an SVHDX\_TUNNEL\_DISK\_INFO\_REQUEST structure, as specified in section [2.2.4.5](#), as follows:

The SVHDX\_TUNNEL\_OPERATION\_HEADER MUST be initialized as follows:

- The **OperationCode** MUST be set to RSVD\_TUNNEL\_GET\_DISK\_INFO\_OPERATION.
- The **Status** field MUST be set to zero.
- The **RequestId** field MUST be set to **RequestIdentifier**.

The client MUST call the interface specified in [\[MS-SMB2\]](#) section 3.2.4.20.11, supplying the following input parameters:

- Application-provided handle to identify the **Open**.
- Control code: FSCTL\_SVHDX\_SYNC\_TUNNEL\_REQUEST.
- SVHDX\_TUNNEL\_DISK\_INFO\_REQUEST packet, as payload.

### 3.1.4.9 Application Requests Execution of SCSI Command

The application provides:

- A handle to the **Open** identifying a shared virtual disk file.
- The ID of the initiator.
- The length of the SCSI Command Descriptor Block (CDB) buffer, in bytes.

- The length of the sense information, in bytes.
- **SrbFlags** that indicate options about the SCSI request, as specified in section [2.2.4.7<4>](#).
- The SCSI CDB buffer.
- The length of any additional data (optional).
- Any additional data buffer (optional).

The client MUST construct an `SVHDX_TUNNEL_SCSI_REQUEST` structure, as specified in section 2.2.4.7 as follows:

The `SVHDX_TUNNEL_OPERATION_HEADER` MUST be initialized as follows:

- The **OperationCode** field is set to `RSVD_TUNNEL_SCSI_OPERATION`.
- The **Status** is set to zero.
- The **RequestId** field MUST be set to `RequestIdentifier`.

The `SVHDX_TUNNEL_SCSI_REQUEST` MUST be initialized as follows:

- The **Length** field is set to 36.
- The **Reserved1**, **Reserved2**, and **Reserved3** fields are set to zero.
- The **CDBLength** is set to the application-provided CDB length value.
- The **SenseInfoExLength** set to the application-provided sense info length value.
- The **SrbFlags** field MUST be set to the application-provided **SrbFlags**.
- If **SrbFlags** includes `SRB_FLAGS_DATA_OUT`, set **DataIn** to 0x00. If **SrbFlags** includes `SRB_FLAGS_DATA_IN`, **DataIn** SHOULD [<5>](#) be set to 0x01. If **SrbFlags** includes neither `SRB_FLAGS_DATA_OUT` nor `SRB_FLAGS_DATA_IN`, set **DataIn** to 0x02.
- The **DataTransferLength** field MUST be set to the application-provided value for the **Length** of the additional value. If the application doesn't provide a data buffer length, the client MUST set this field to zero.
- The **CDBBuffer** field MUST be set to the application-provided CDB buffer.
- The **DataBuffer** field MUST be set to the application-provided additional data buffer. If the application doesn't provide the buffer, the client MUST set this field to empty.

The client MUST call the interface specified in [\[MS-SMB2\]](#) section 3.2.4.20.11, supplying the following input parameters:

- Application-provided handle to identify the **Open**.
- Control code: `FSCTL_SVHDX_SYNC_TUNNEL_REQUEST`.
- `SVHDX_TUNNEL_SCSI_REQUEST` structure as payload.

### 3.1.4.10 Application Requests to Validate a Shared Virtual Disk

The application provides:

- A handle to the **Open** identifying a shared virtual disk file.

The client MUST construct an SVHDX\_TUNNEL\_VALIDATE\_DISK\_REQUEST structure, as specified in section [2.2.4.9](#), as follows:

The SVHDX\_TUNNEL\_OPERATION\_HEADER MUST be initialized as follows:

- The **OperationCode** field MUST be set to RSVD\_TUNNEL\_VALIDATE\_DISK\_OPERATION.
- The **Status** field MUST be set to zero.
- The **RequestId** field MUST be set to **RequestIdentifier**.

The client MUST call the interface specified in [\[MS-SMB2\]](#) section 3.2.4.20.11, supplying the following input parameters:

- Application-provided handle to identify the **Open**.
- Control code: FSCTL\_SVHDX\_SYNC\_TUNNEL\_REQUEST.
- SVHDX\_TUNNEL\_OPERATION\_HEADER structure as payload.

### 3.1.4.11 Application Requests Querying Shared Virtual Disk Support

The application provides:

- A handle to the **Open** identifying a shared virtual disk file.

The client MUST call the interface specified in [\[MS-SMB2\]](#) section 3.2.4.20.11, supplying the following input parameters:

- Application-provided handle to identify the **Open**.
- Control code: FSCTL\_QUERY\_SHARED\_VIRTUAL\_DISK\_SUPPORT

### 3.1.4.12 Application Requests Creating a Virtual Machine Snapshot

The application provides:

- A handle to the **Open** identifying a VHD set.
- **TransactionId**: A GUID used to uniquely identify the start operation.
- Stage 1 value
- Stage 2 value
- Stage 3 value
- Stage 4 value
- Stage 5 value
- Stage 6 value
- **SnapshotId**: A GUID to uniquely identify the snapshot.

The client MUST construct an SVHDX\_META\_OPERATION\_START\_REQUEST structure, as specified in section [2.2.4.17](#) as follows:

The SVHDX\_TUNNEL\_OPERATION\_HEADER MUST be initialized as follows:

- The **OperationCode** MUST be set to RSVD\_TUNNEL\_META\_OPERATION\_START.

- The **Status** field MUST be set to zero.
- The **RequestId** field MUST be set to **RequestIdentifier**.

The SVHDX\_META\_OPERATION\_START\_REQUEST MUST be initialized as follows:

- The **TransactionId** field is set to the application-provided **TransactionId**.
- The **OperationType** field is set to **SvhdxMetaOperationTypeCreateSnapshot**.
- The **Data** field is set to an SVHDX\_META\_OPERATION\_CREATE\_SNAPSHOT structure initialized as follows:
  - The **SnapshotType** field is set to the snapshot type provided by the application
  - The **Stage1** field is set to the stage 1 value provided by the application.
  - The **Stage2** field is set to the stage 2 value provided by the application.
  - The **Stage3** field is set to the stage 3 value provided by the application.
  - The **Stage4** field is set to the stage 4 value provided by the application.
  - The **Stage5** field is set to the stage 5 value provided by the application.
  - The **Stage6** field is set to the stage 6 value provided by the application.
  - The **SnapshotId** field is set to the SnapshotId provided by the application.
  - The **ParametersPayloadSize** is set to 0.

The client MUST call the interface specified in [\[MS-SMB2\]](#) section 3.2.4.20.11, supplying the following input parameters:

- Application-provided handle to identify the **Open**.
- Control code: FSCTL\_SVHDX\_ASYNC\_TUNNEL\_REQUEST.
- SVHDX\_META\_OPERATION\_START\_REQUEST structure as payload.

### 3.1.4.13 Application Requests Creating a CDP Snapshot

The application provides:

- A handle to the **Open** identifying a VHD set.
- **TransactionId**: A GUID used to uniquely identify the start operation.
- Stage 1 value
- Stage 2 value
- Stage 3 value
- Stage 4 value
- Stage 5 value
- Stage 6 value
- **SnapshotId**: A GUID to uniquely identify the snapshot.

- **LogFileID:** A GUID to identify the log file.
- **FileName:** A log file name.

The client MUST construct an SVHDX\_META\_OPERATION\_START\_REQUEST structure, as specified in section [2.2.4.17](#), as follows:

The SVHDX\_TUNNEL\_OPERATION\_HEADER MUST be initialized as follows:

- The **OperationCode** MUST be set to RSVD\_TUNNEL\_META\_OPERATION\_START.
- The **Status** field MUST be set to zero.
- The **RequestId** field MUST be set to **RequestIdentifier**.

The SVHDX\_META\_OPERATION\_START\_REQUEST MUST be initialized as follows:

- The **TransactionId** field is set to the application-provided **TransactionId**.
- The **OperationType** field is set to **SvhdxMetaOperationTypeCreateSnapshot**.
- The **Data** field is set to an SVHDX\_META\_OPERATION\_CREATE\_SNAPSHOT structure initialized as follows:
  - The **SnapshotType** field is set to **SvhdxSnapshotTypeCDP**.
  - The **Stage1** field is set to the stage 1 value provided by the application.
  - The **Stage2** field is set to the stage 2 value provided by the application.
  - The **Stage3** field is set to the stage 3 value provided by the application.
  - The **Stage4** field is set to the stage 4 value provided by the application.
  - The **Stage5** field is set to the stage 5 value provided by the application.
  - The **Stage6** field is set to the stage 6 value provided by the application.
  - The **SnapshotId** field is set to the **SnapshotId** provided by application.
  - The **ParametersPayloadSize** is set to the size, in bytes, of the **CdpParameters** field.
  - The **CdpParameters** field is set to an SVHDX\_META\_OPERATION\_CREATE\_CDP\_PARAMETER structure initialized as follows:
    - The **LogFileId** field is set to the **LogFileID** provided by the application.
    - The **LogFileName** field is set to the **FileName** provided by the application.

The client MUST call the interface specified in [\[MS-SMB2\]](#) section 3.2.4.20.11, supplying the following input parameters:

- Application-provided handle to identify the **Open**.
- Control code: FSCTL\_SVHDX\_ASYNC\_TUNNEL\_REQUEST.
- SVHDX\_META\_OPERATION\_START\_REQUEST structure as payload.

### 3.1.4.14 Application Requests Optimizing the Target VHD set

The application provides:

- A handle to the **Open** identifying a VHD set.
- **TransactionId**: A GUID used to uniquely identify the start operation.

The client MUST construct an SVHDX\_META\_OPERATION\_START\_REQUEST structure, as specified in section [2.2.4.17](#), as follows:

The SVHDX\_TUNNEL\_OPERATION\_HEADER MUST be initialized as follows:

- The **OperationCode** MUST be set to RSVD\_TUNNEL\_META\_OPERATION\_START.
- The **Status** field MUST be set to zero.
- The **RequestId** field MUST be set to **RequestIdentifier**.

The SVHDX\_META\_OPERATION\_START\_REQUEST MUST be initialized as follows:

- The **TransactionId** field is set to the application-provided **TransactionId**.
- The **OperationType** field is set to **SvhdxMetaOperationTypeOptimize**.

The client MUST call the interface specified in [\[MS-SMB2\]](#) section 3.2.4.20.11, supplying the following input parameters:

- Application-provided handle to identify the **Open**.
- Control code: FSCTL\_SVHDX\_ASYNC\_TUNNEL\_REQUEST.
- SVHDX\_META\_OPERATION\_START\_REQUEST structure as payload.

### 3.1.4.15 Application Requests Extracting a Differencing VHD

The application provides:

- A handle to the **Open** identifying a VHD set.
- **TransactionId**: A GUID used to uniquely identify the start operation.
- **SnapshotType**: The type of the snapshot.
- **Flags**: The flags to be passed to the server.
- **SnapshotId**: A GUID to identify the first snapshot data to include in the extract.
- **SnapshotLimitId**: A GUID to identify the last snapshot data to include in the extract.
- **DestinationVhdName**: A VHD file name into which the difference data will be written.

The client MUST construct an SVHDX\_META\_OPERATION\_START\_REQUEST structure, as specified in section [2.2.4.17](#), as follows:

The SVHDX\_TUNNEL\_OPERATION\_HEADER MUST be initialized as follows:

- The **OperationCode** MUST be set to RSVD\_TUNNEL\_META\_OPERATION\_START.
- The **Status** field MUST be set to zero.
- The **RequestId** field MUST be set to **RequestIdentifier**.

The SVHDX\_META\_OPERATION\_START\_REQUEST MUST be initialized as follows:

- The **TransactionId** field is set to the application-provided **TransactionId**.

- The **OperationType** field is set to **SvhdxMetaOperationTypeExtractVHD**.
- The **Data** field to a **SVHDX\_META\_OPERATION\_EXTRACT** structure initialized as follows:
  - The **SnapshotType** field is set to the **SnapshotType** provided by the application.
  - The **Flags** field is set to the **Flags** provided by the application.
  - The **SourceSnapshotId** field is set to the **SnapshotId** provided by the application.
  - The **SourceLimitSnapshotId** field is set to the **SnapshotLimitId** provided by the application.
  - The **DestinationVhdNameLength** field is set to the size, in bytes, of **DestinationVhdName**.
  - The **DestinationVhdName** field is set to the **DestinationVhdName** provided by the application.

The client MUST call the interface specified in [\[MS-SMB2\]](#) section 3.2.4.20.11, supplying the following input parameters:

- Application-provided handle to identify the **Open**.
- Control code: FSCTL\_SVHDX\_ASYNC\_TUNNEL\_REQUEST.
- SVHDX\_META\_OPERATION\_START\_REQUEST structure as payload.

#### 3.1.4.16 Application Requests Converting a Virtual Disk to VHD Set

The application provides:

- A handle to the **Open** identifying a shared virtual disk.
- **TransactionId**: A GUID used to uniquely identify the start operation.
- **DestinationVhdSetName**: A name for the VHD set.

The client MUST construct an SVHDX\_META\_OPERATION\_START\_REQUEST structure, as specified in section [2.2.4.17](#), as follows:

The SVHDX\_TUNNEL\_OPERATION\_HEADER MUST be initialized as follows:

- The **OperationCode** MUST be set to RSVD\_TUNNEL\_META\_OPERATION\_START.
- The **Status** field MUST be set to zero.
- The **RequestId** field MUST be set to **RequestIdentifier**.

The SVHDX\_META\_OPERATION\_START\_REQUEST MUST be initialized as follows:

- The **TransactionId** field is set to the application-provided **TransactionId**.
- The **OperationType** field is set to **SvhdxMetaOperationTypeConvertToVHDSet**.
- The **Data** field to a SVHDX\_META\_OPERATION\_CONVERT\_TO\_VHDSET structure is initialized as follows:
  - The **DestinationVhdSetNameLength** field is set to the size, in bytes, of **DestinationVhdSetName**.
  - The **DestinationVhdSetName** field is set to the **DestinationVhdSetName** provided by the application.

The client MUST call the interface specified in [\[MS-SMB2\]](#) section 3.2.4.20.11, supplying the following input parameters:

- Application-provided handle to identify the **Open**.
- Control code: FSCTL\_SVHDX\_ASYNC\_TUNNEL\_REQUEST.
- SVHDX\_META\_OPERATION\_START\_REQUEST structure as payload.

### 3.1.4.17 Application Requests Resizing a Shared Virtual Disk

The application provides:

- A handle to the **Open** identifying a shared virtual disk.
- **TransactionId**: A GUID used to uniquely identify the start operation.
- **NewVirtualSize**: The new size of the virtual disk.
- **ExpandOnly**: Indicates that a size can only be expanded.
- **AllowUnsafeVirtualSize**: Indicates that the new size can be less than the data on the disk.
- **ShrinkToMinimumSafeSize**: Indicates that the server should automatically shrink the virtual disk to the minimum safe virtual size.

The client MUST construct an SVHDX\_META\_OPERATION\_START\_REQUEST structure, as specified in section [2.2.4.17](#), as follows:

The SVHDX\_TUNNEL\_OPERATION\_HEADER MUST be initialized as follows:

- The **OperationCode** MUST be set to RSVD\_TUNNEL\_META\_OPERATION\_START.
- The **Status** field MUST be set to zero.
- The **RequestId** field MUST be set to **RequestIdentifier**.

The SVHDX\_META\_OPERATION\_START\_REQUEST MUST be initialized as follows:

- The **TransactionId** field is set to the application-provided **TransactionId**.
- The **OperationType** field is set to **SvhdxMetaOperationTypeResize**.
- The **Data** field to a SVHDX\_META\_OPERATION\_RESIZE\_VIRTUAL\_DISK structure is initialized as follows:
  - The **NewSize** field is set to the **NewVirtualSize** provided by the application.
  - The **ExpandOnly** field is set to the **ExpandOnly** provided by the application.
  - The **AllowUnsafeVirtualSize** field is set to **AllowUnsafeVirtualSize** provided by the application.
  - The **ShrinkToMinimumSafeSize** field is set to **ShrinkToMinimumSafeSize** provided by the application.

The client MUST call the interface specified in [\[MS-SMB2\]](#) section 3.2.4.20.11, supplying the following input parameters:

- Application-provided handle to identify the **Open**.
- Control code: FSCTL\_SVHDX\_ASYNC\_TUNNEL\_REQUEST.



- SVHDX\_META\_OPERATION\_START\_REQUEST structure as payload.

### 3.1.4.18 Application Requests Querying Meta Operation Progress

The application provides:

- A handle to the **Open** identifying a VHD set.
- **TransactionId**: A GUID used to uniquely identify the query operation.

The client MUST construct an SVHDX\_META\_OPERATION\_QUERY\_PROGRESS\_REQUEST structure, as specified in section [2.2.4.23](#), as follows:

The SVHDX\_TUNNEL\_OPERATION\_HEADER MUST be initialized as follows:

- The **OperationCode** MUST be set to RSVD\_TUNNEL\_META\_OPERATION\_QUERY\_PROGRESS.
- The **Status** field MUST be set to zero.
- The **RequestId** field MUST be set to **RequestIdentifier**.

The SVHDX\_META\_OPERATION\_QUERY\_PROGRESS\_REQUEST MUST be initialized as follows:

- The **TransactionId** is set to the **TransactionId** provided by the application.

The client MUST call the interface specified in [\[MS-SMB2\]](#) section 3.2.4.20.11, supplying the following input parameters:

- Application-provided handle to identify the **Open**.
- Control code: FSCTL\_SVHDX\_SYNC\_TUNNEL\_REQUEST.
- SVHDX\_META\_OPERATION\_QUERY\_PROGRESS\_REQUEST structure as payload.

### 3.1.4.19 Application Requests Querying VHD Set Information

The application provides:

- A handle to the **Open** identifying a VHD set.
- **InformationType**: The type of information requested by the client.
- **SnapshotType**: The type of the snapshot.
- **SnapshotId**: A snapshot identifier relevant to the handle.

The client MUST construct an SVHDX\_TUNNEL\_VHDSET\_QUERY\_INFORMATION\_REQUEST structure, as specified in section [2.2.4.22](#), as follows:

The SVHDX\_TUNNEL\_OPERATION\_HEADER MUST be initialized as follows:

- The **OperationCode** MUST be set to RSVD\_TUNNEL\_VHDSET\_QUERY\_INFORMATION.
- The **Status** field MUST be set to zero.
- The **RequestId** field MUST be set to **RequestIdentifier**.

The SVHDX\_TUNNEL\_VHDSET\_QUERY\_INFORMATION\_REQUEST MUST be initialized as follows:

- The **VHDSetInformationType** is set to the **InformationType** provided by the application.

- The **SnapshotType** field is set to the **SnapshotType** provided by the client.
- The **SnapshotId** field is set to the **SnapshotId** provided by the application.

The client MUST call the interface specified in [\[MS-SMB2\]](#) section 3.2.4.20.11, supplying the following input parameters:

- Application-provided handle to identify the **Open**.
- Control code: FSCTL\_SVHDX\_SYNC\_TUNNEL\_REQUEST.
- SVHDX\_TUNNEL\_VHDSET\_QUERY\_INFORMATION\_REQUEST structure as payload.

#### 3.1.4.20 Application Requests Deleting a Snapshot

The application provides:

- A handle to the **Open** identifying a VHD set.
- **SnapshotID**: An identifier of the snapshot to be deleted.
- **PersistReference**: A flag; if TRUE, indicates that the snapshot reference should be persisted.
- **SnapshotType**: Type of the snapshot.

The client MUST construct an SVHDX\_TUNNEL\_DELETE\_SNAPSHOT\_REQUEST structure, as specified in section [2.2.4.26](#), as follows:

The SVHDX\_TUNNEL\_OPERATION\_HEADER MUST be initialized as follows:

- The **OperationCode** MUST be set to RSVD\_TUNNEL\_DELETE\_SNAPSHOT
- The **Status** field MUST be set to zero.
- The **RequestId** field MUST be set to **RequestIdentifier**.

The SVHDX\_TUNNEL\_DELETE\_SNAPSHOT\_REQUEST MUST be initialized as follows:

- The **SnapshotId** is set to the **SnapshotID** provided by the application.
- The **PersistReference** is set to the **PersistReference** provided by the application.
- The **SnapshotType** is set to the **SnapshotType** provided by the application.

The client MUST call the interface specified in [\[MS-SMB2\]](#) section 3.2.4.20.11, supplying the following input parameters:

- Application-provided handle to identify the **Open**.
- Control code: FSCTL\_SVHDX\_SYNC\_TUNNEL\_REQUEST.
- SVHDX\_TUNNEL\_DELETE\_SNAPSHOT\_REQUEST structure as payload.

#### 3.1.4.21 Application Requests Querying Change Tracking Parameters

The application provides:

- A handle to the **Open** identifying a VHD set.

The SVHDX\_TUNNEL\_OPERATION\_HEADER MUST be initialized as follows:

- The **OperationCode** MUST be set to RSVD\_TUNNEL\_CHANGE\_TRACKING\_GET\_PARAMETERS.
- The **Status** field MUST be set to zero.
- The **RequestId** field MUST be set to **RequestIdentifier**.

The client MUST call the interface specified in [\[MS-SMB2\]](#) section 3.2.4.20.11, supplying the following input parameters:

- Application-provided handle to identify the **Open**.
- Control code: FSCTL\_SVHDX\_SYNC\_TUNNEL\_REQUEST.
- SVHDX\_TUNNEL\_OPERATION\_HEADER structure as payload.

### 3.1.4.22 Application Requests Starting a Change Tracking Operation

The application provides:

- A handle to the **Open** identifying a VHD set.
- **TransactionId**: An identifier of the snapshot to be deleted.
- **LogFileId**: A GUID that identifies the log file.
- **MaxLogFileSize**: Maximum size of the log file.
- **AppendData**: A flag; if TRUE, indicates that the tracked data will be appended to the existing log file.
- **LogFileName**: A log file name.

The client MUST construct an **SVHDX\_CHANGE\_TRACKING\_START\_REQUEST** structure, as specified in section [2.2.4.27](#), as follows:

The SVHDX\_TUNNEL\_OPERATION\_HEADER MUST be initialized as follows:

- The **OperationCode** MUST be set to RSVD\_TUNNEL\_CHANGE\_TRACKING\_START.
- The **Status** field MUST be set to zero.
- The **RequestId** field MUST be set to **RequestIdentifier**.

The **SVHDX\_CHANGE\_TRACKING\_START\_REQUEST** MUST be initialized as follows:

- The **TransactionId** is set to the **TransactionId** provided by the application.
- The **LogFileNameLength** is set to the size, bytes, of the application-provided LogFileName.
- The **MaxLogFileSize** is set to the **MaxLogFileSize** provided by the application.
- The **AppendData** is set to the **AppendData** provided by the application.
- The **LogFileName** is set to the **LogFileName** provided by the application.

The client MUST call the interface specified in [\[MS-SMB2\]](#) section 3.2.4.20.11, supplying the following input parameters:

- Application-provided handle to identify the **Open**.
- Control code: FSCTL\_SVHDX\_SYNC\_TUNNEL\_REQUEST.

- SVHDX\_CHANGE\_TRACKING\_START\_REQUEST structure as payload.

### 3.1.4.23 Application Requests Stopping a Change Tracking Operation

The application provides:

- A handle to the **Open** identifying a VHD set.

The SVHDX\_TUNNEL\_OPERATION\_HEADER MUST be initialized as follows:

- The **OperationCode** MUST be set to RSVD\_TUNNEL\_CHANGE\_TRACKING\_STOP
- The **Status** field MUST be set to zero.
- The **RequestId** field MUST be set to **RequestIdentifier**.

The client MUST call the interface specified in [\[MS-SMB2\]](#) section 3.2.4.20.11, supplying the following input parameters:

- Application-provided handle to identify the **Open**.
- Control code: FSCTL\_SVHDX\_SYNC\_TUNNEL\_REQUEST.
- SVHDX\_TUNNEL\_OPERATION\_HEADER structure as payload.

### 3.1.4.24 Application Requests Opening a Shared VHD Set using a Target Specifier

This section is applicable only if **ClientServiceVersion** is RSVD Protocol version 2.

The application provides:

- A path to the VHD set file, which needs to be opened and mounted.
- **SnapshotID**, which should be used to perform the Open operation.

The client MUST append ":SharedVirtualDisk" at the end of the file path.

The client MUST construct the FILE\_FULL\_EA\_INFORMATION structure, as specified in [\[MS-FSCC\]](#) section 2.4.15, and MUST be initialized as follows:

- **NextEntryOffset** MUST be set to 0.
- **Flags** MUST be set to **FILE\_NEED\_EA**.
- **EaValueLength** MUST be set to 24.
- **EaNameLength** MUST be set to 24.
- **EaName** MUST be set to "RSVD\_TARGET\_SPECIFIER\_EA".
- **EaValue** MUST be set to the RSVD\_BLOCK\_DEVICE\_TARGET\_SPECIFIER structure, as specified in section [2.2.4.34](#), with the following values set:
  - **RsvdBlockDeviceTargetNamespace** MUST be set to **SnapshotId**.
  - **TargetInformationSnapshot.SnapshotType** MUST be set to **SvhdxSnapshotTypeVM**.
  - **TargetInformationSnapshot.SnapshotID** MUST be set to the application-provided Snapshot ID.

The client MUST establish a connection to the server by calling the interface specified in [\[MS-SMB2\]](#) section 3.2.4.2 and providing the following input parameters:

- The application-provided server name.
- The application-provided share name.
- The application-provided user credentials.

If the connection is successfully established, the client MUST open the shared virtual disk file by calling the interface specified in [\[MS-SMB2\]](#) section 3.2.4.3 and provide the following input parameters:

- File path
- FILE\_FULL\_EA\_INFORMATION constructed above
- **CreateOptions**, as specified in [\[MS-SMB2\]](#) section 2.2.13, with the FILE\_NO\_INTERMEDIATE\_BUFFERING bit set

If there is an error from the preceding call, the client MUST return the error to the caller.

### 3.1.4.25 Application Requests to Apply Snapshot

The application provides:

- A handle to the **Open** identifying a VHD set.
- **SnapshotId**: A GUID to uniquely identify the snapshot.

The client MUST construct an SVHDX\_META\_OPERATION\_START\_REQUEST structure, as specified in section [2.2.4.17](#), as follows:

The SVHDX\_TUNNEL\_OPERATION\_HEADER MUST be initialized as follows:

- The **OperationCode** MUST be set to RSVD\_TUNNEL\_META\_OPERATION\_START.
- The **Status** field MUST be set to zero.
- The **RequestId** field MUST be set to **RequestIdentifier**.

The SVHDX\_META\_OPERATION\_START\_REQUEST MUST be initialized as follows:

- The **TransactionId** field is set to the application-provided **TransactionId**.
- The **OperationType** field is set to **SvhdxMetaOperationTypeApplySnapshot**.
- The **Data** field is set to an SVHDX\_APPLY\_SNAPSHOT\_PARAMS structure, initialized as follows:
  - The **SnapshotType** field is set to the snapshot type provided by the application.
  - The **SnapshotId** field is set to the SnapshotId provided by the application.

The client MUST call the interface specified in [\[MS-SMB2\]](#) section 3.2.4.20.11, supplying the following input parameters:

- Application-provided handle to identify the **Open**.
- Control code: FSCTL\_SVHDX\_ASYNC\_TUNNEL\_REQUEST.
- SVHDX\_META\_OPERATION\_START\_REQUEST structure as payload.

### 3.1.4.26 Application Requests Querying List of Changed Ranges

The application provides:

- A handle to the **Open** identifying a VHD set.
- **TargetSnapshotID**: GUID representing the snapshot to query the changed ranges.
- **LimitSnapshotID**: GUID representing the snapshot to use as a baseline for getting the list of changed ranges.
- **ByteOffset**: The byte offset of the region in the virtual disk to query changes for.
- **ByteLength**: The length, in bytes, of the region in the virtual disk to query changes for.

The client MUST construct an SVHDX\_TUNNEL\_QUERY\_VIRTUAL\_DISK\_CHANGES\_REQUEST structure, as specified in section [2.2.4.37](#), as follows:

- **TargetSnapshotID** to application-provided **TargetSnapshotID**.
- **LimitSnapshotID** to application-provided **LimitSnapshotID**.
- **SnapshotType** to **SvhdxSnapshotTypeVM**.
- **ByteOffset** to application-provided **ByteOffset**.
- **ByteLength** to application-provided **ByteLength**.

The SVHDX\_TUNNEL\_OPERATION\_HEADER MUST be initialized as follows:

- The **OperationCode** MUST be set to RSVD\_TUNNEL\_QUERY\_VIRTUAL\_DISK\_CHANGES.
- The **Status** field MUST be set to zero.
- The **RequestId** field MUST be set to **RequestIdentifier**.

The client MUST call the interface specified in [\[MS-SMB2\]](#) section 3.2.4.20.11, supplying the following input parameters:

- Application-provided handle to identify the **Open**.
- Control code: FSCTL\_SVHDX\_SYNC\_TUNNEL\_REQUEST.
- SVHDX\_TUNNEL\_OPERATION\_HEADER structure as payload.
- The maximum output buffer size that it will accept.

## 3.1.5 Message Processing Events and Sequencing Rules

### 3.1.5.1 Receiving an Open Response

If the response returned by the SMB server indicates an error, the client MUST return the received error code to the calling application.

Otherwise, the client MUST return success and the **Open.ContextHandle** to the calling application.

### 3.1.5.2 Receiving a Close Response

The client MUST return the received response to the calling application.

### 3.1.5.3 Receiving a Read Response

If the response returned by the SMB server indicates success, the client MUST return success and the data buffer that contains the data read for the response.

If the response indicates an error, and the received error code is specified in the section [2.2.3](#), the server MUST return the error code.

If the received error code is not specified in the section 2.2.3, the client MUST construct an SVHDX\_TUNNEL\_SRB\_STATUS\_REQUEST structure as follows:

The SVHDX\_TUNNEL\_OPERATION\_HEADER MUST be initialized as follows:

- The **OperationCode** MUST be set to RSVD\_TUNNEL\_SRB\_STATUS\_OPERATION.
- The **Status** field MUST be set to zero.
- The **RequestId** field MUST be set to **RequestIdentifier**.

The SVHDX\_TUNNEL\_SRB\_STATUS\_REQUEST structure MUST be initialized as follows:

- The **StatusKey** field MUST be set to the least significant byte of the received error code.
- The **Reserved** field MUST be set to zero.

The client MUST call the interface specified in [\[MS-SMB2\]](#) section 3.2.4.20.11, supplying the following input parameters:

- Application-provided handle used for Read request.
- Control code: FSCTL\_SVHDX\_SYNC\_TUNNEL\_REQUEST.
- SVHDX\_TUNNEL\_SRB\_STATUS\_REQUEST structure as payload.

The client MUST return the received sense error response to the calling application.

### 3.1.5.4 Receiving a Write Response

If the response returned by the SMB server indicates success, the client MUST return success to the calling application.

If the response indicates an error, and the received error code is specified in the section [2.2.3](#), the server MUST return the error code.

If the received error code is not specified in the section 2.2.3, the client MUST construct an SVHDX\_TUNNEL\_SRB\_STATUS\_REQUEST structure as follows:

The SVHDX\_TUNNEL\_OPERATION\_HEADER MUST be initialized as follows:

- The **OperationCode** MUST be set to RSVD\_TUNNEL\_SRB\_STATUS\_OPERATION.
- The **Status** field MUST be set to zero.
- The **RequestId** field MUST be set to **RequestIdentifier**.

The SVHDX\_TUNNEL\_SRB\_STATUS\_REQUEST structure MUST be initialized as follows:

- The **StatusKey** field MUST be set to the least significant byte of the received error code.
- The **Reserved** field MUST be set to zero.

The client MUST call the interface specified in [\[MS-SMB2\]](#) section 3.2.4.20.11, supplying the following input parameters:

- Application-provided handle used for Write request.
- Control code: FSCTL\_SVHDX\_SYNC\_TUNNEL\_REQUEST.
- SVHDX\_TUNNEL\_SRB\_STATUS\_REQUEST structure as payload.

The client MUST return the received sense error response to the calling application.

### **3.1.5.5 Receiving a Virtual Disk File Information Response**

If the response returned by the SMB server indicates an error, the client MUST return the received error code to the calling application.

If the response indicates success, the client MUST return success and the disk file information to the calling application.

### **3.1.5.6 Receiving a Connection Status Response**

The client MUST return the received status code to the calling application.

### **3.1.5.7 Receiving a Shared Virtual Disk Information Response**

If the response returned by the SMB server indicates an error, the client MUST return the received status code to the calling application.

If the response indicates success, the client MUST return success and the virtual disk information to the calling application.

### **3.1.5.8 Receiving a SCSI Command Response**

If the response returned by the SMB server indicates an error, the client MUST return the received error code to the calling application.

If the response indicates success, the client MUST return success and response data to the calling application.

### **3.1.5.9 Receiving a Validate Disk Response**

The client MUST return the received status to the calling application.

### **3.1.5.10 Receiving a Shared Virtual Disk Support Response**

The client MUST return the received status and response data to the calling application.

### **3.1.5.11 Receiving a Meta-Operation Start Response**

The client MUST return the received status to the calling application.

### **3.1.5.12 Receiving a Meta-Operation Progress Response**

If the response returned by the SMB server indicates an error, the client MUST return the received error code to the calling application.



If the response indicates success, the client MUST return success and response data to the calling application.

### **3.1.5.13 Receiving a Query VHD Set Information Response**

If the response returned by the SMB server indicates an error, the client MUST return the received error code to the calling application.

If the response indicates success, the client MUST return success and response data to the calling application.

### **3.1.5.14 Receiving a Delete Snapshot Response**

The client MUST return the received status to the calling application.

### **3.1.5.15 Receiving a Change Tracking Parameter Response**

If the response returned by the SMB server indicates an error, the client MUST return the received error code to the calling application.

If the response indicates success, the client MUST return success and response data to the calling application.

### **3.1.5.16 Receiving a Start Change Tracking Response**

The client MUST return the received status to the calling application.

### **3.1.5.17 Receiving a Stop Change Tracking Response**

The client MUST return the received status to the calling application.

## **3.1.6 Timer Events**

None.

## **3.1.7 Other Local Events**

None.

## **3.2 Server Details**

### **3.2.1 Abstract Data Model**

#### **3.2.1.1 Global**

The server MUST implement the following:

**IsSVHDXSupported:** A Boolean value that, if set, indicates support for operations on shared virtual disks.

**OpenTable:** A table of opened shared virtual disk files, as specified in section [3.2.1.2](#), indexed by InitiatorId.

**ServerServiceVersion:** The highest protocol version supported by the server.

### 3.2.1.2 Per Open

Note: Some of the information in this section is subject to change because it applies to a preliminary product version, and thus may differ from the final version of the software when released. All behavior notes that pertain to the preliminary product version contain specific references to it in the Product Behavior appendix.

The server MUST implement the following:

**InitiatorId:** A GUID that identifies the initiator of the open request.

**Open.LocalOpen:** An **Open** of a shared virtual disk file in the local resource that is used to perform the local operations, such as reading or writing, to the underlying object.

**Open.FileName:** A variable-length string that contains the Unicode file name supplied by the client for opening the shared virtual disk.

**Open.SenseErrorSequence:** An unsigned 8-bit identifier indicating the sense error sequence that counts from 0 through 255.

**Open.SenseErrorDataList:** A list of sense errors indexed by the **Open.SenseErrorSequence**, as defined in section [3.2.1.3](#).

**Open.IsVirtualSCSIDisk:** A Boolean that, if set, indicates that the file is a virtual SCSI disk.

**Open.CreateOptions:** The create options, in the format specified in [\[MS-SMB2\]](#) section 2.2.13.

If the server implements RSVD Protocol version 2, it MUST implement the following:

**Open.IsVHDSet:** A Boolean that, if set, indicates that the virtual disk is a VHD set.

**Open.PendingDelete:** A Boolean that, if set, indicates that the VHD set is marked to be deleted on close.

**Open.VHDSSnapshotId:** A GUID that identifies a snapshot in VHD set.

**Open.SnapshotList:** A list of snapshots, as specified in section [3.2.1.4](#), for the file identified by the Open object.

### 3.2.1.3 Per SenseError in SenseErrorDataList

The server MUST implement the following:

**SenseError.StatusKey:** A 32-bit value assigned by the server for this sense error.

**SenseError.SrbStatus:** A 7-bit value indicating the status of the SCSI request block as specified in section [2.2.5](#).

**SenseError.ScsiStatus:** An 8-bit value indicating the SCSI status that was returned by the shared virtual disk.

**SenseError.SenseData:** A pointer to the sense data.

### 3.2.1.4 Per Snapshot

Note: All of the information in this section is subject to change because it applies to a preliminary product version, and thus may differ from the final version of the software when released. All behavior notes that pertain to the preliminary product version contain specific references to it as an aid to the reader.

**SnapshotId:** A GUID that identifies the snapshot.

**ChangeTracking:** A Boolean value that, if set, indicates change tracking is enabled for this snapshot.

### 3.2.2 Timers

None.

### 3.2.3 Initialization

The server MUST enumerate the shares by calling **NetrShareEnum** as specified in [\[MS-SRVS\]](#) section 3.1.4.8. In the enumerated list, if any of the shares have `shi*_type` set to `STYPE_CLUSTER_SIFS`, as specified in [\[MS-SRVS\]](#) section 2.2.2.4, the server MUST set **IsSVHDXSupported** to TRUE.

When the server is started:

- If **IsSVHDXSupported** is TRUE, the server MUST notify the SMB server that it is ready to process client requests, as specified in [\[MS-SMB2\]](#) section 3.3.4.25.
- The server MUST initialize **ServerServiceVersion** to an implementation-specific [<6>](#) administratively configured protocol version.

### 3.2.4 Higher-Layer Triggered Events

#### 3.2.4.1 Handling a Tunnel Operation Request

The calling application provides:

- A handle identifying the **Open**.
- Tunnel Operation request.
- The maximum size of the response that will be accepted by the client, indicated by **MaxOutputResponse**.

The server MUST process this request as specified in section [3.2.5.5](#).

#### 3.2.4.2 Handling a Shared Virtual Disk Support Request

The calling application provides:

- A handle identifying the **Open**.
- File name to identify the shared virtual disk file.
- The maximum size of the response data buffer that will be accepted by the client, indicated by **MaxOutputResponse**.

The server MUST process this request as specified in section [3.2.5.6](#).

### 3.2.5 Message Processing Events and Sequencing Rules

For this section, if **IsSVHDXSupported** is FALSE, the server MUST fail the request with `STATUS_INVALID_DEVICE_REQUEST`, as specified in [\[MS-ERREF\]](#).

### 3.2.5.1 Receiving an Open Request

Note: Some of the information in this section is subject to change because it applies to a preliminary product version, and thus may differ from the final version of the software when released. All behavior notes that pertain to the preliminary product version contain specific references to it in the Product Behavior appendix.

If **Open.LocalOpen** is not NULL, the server MUST look up an **Open** in **OpenTable** where **Open.LocalOpen** matches the **Open** provided by the SMB2 server, as specified in [\[MS-SMB2\]](#) section 3.3.5.9.12. If an **Open** is found, the server MUST stop processing the request. If no **Open** is found, the server MUST fail the request with STATUS\_INVALID\_HANDLE.

If **Open.LocalOpen** is NULL, this indicates that the server received a request to open a shared virtual disk file.

If any of the following conditions is TRUE, the server MUST fail the request with STATUS\_BUFFER\_TOO\_SMALL:

- If the size of the received context is less than the size of the SVHDX\_OPEN\_DEVICE\_CONTEXT structure.
- If **ServerServiceVersion** is RSVD Protocol version 2, and the first 4 bytes, interpreted as little-endian, of the received context are equal to 0x00000002, and the size of the received context is less than size of the SVHDX\_OPEN\_DEVICE\_CONTEXT\_V2 structure.

If **ServerServiceVersion** is RSVD Protocol version 2 and if the first 4 bytes, interpreted as little-endian, of the received context are neither 0x00000001 nor 0x00000002, the server MUST fail the request with STATUS\_INVALID\_PARAMETER.

If **HasInitiatorId** is neither FALSE (0x00) nor TRUE (0x01), the server MUST fail the request with STATUS\_INVALID\_PARAMETER.

If the **OriginatorFlags** field in the request is set to SVHDX\_ORIGINATOR\_VHDMP, the server MUST search the **OpenTable** where **Open.FileName** matches the file name. If an **Open** is found, the server MUST fail the request with STATUS\_VHD\_SHARED. Otherwise, the server MUST pass the request to the underlying object store to open the file with read and write access permissions.

If the **OriginatorFlags** field in the request is not set to SVHDX\_ORIGINATOR\_VHDMP, the server SHOULD [<7>](#) pass the request to the virtual SCSI disk.

If the underlying object store or virtual SCSI disk returns a failure indicating that the attempted open operation failed, the server MUST return the received error code.

If the underlying object store or virtual SCSI disk returns success, the server MUST initialize the **Open** as follows:

- **Open.LocalOpen** is set to the **Open** of the object in the local resource received as part of the local create operation.
- If **HasInitiatorId** is 0x00, **Open.InitiatorId** is set to zero. Otherwise, it is set to **InitiatorId**.
- **Open.FileName** MUST be set to the application-provided file name.
- **Open.SenseErrorDataList** MUST be set to empty.
- **Open.SenseErrorSequence** MUST be set to 0x00.
- **Open.IsVirtualSCSIDisk** SHOULD [<8>](#) be set to TRUE if **OriginatorFlags** is not set to SVHDX\_ORIGINATOR\_VHDMP. Otherwise, it MUST be set to FALSE.

- **Open.CreateOptions** MUST be set to the **CreateOptions** received as part of the local create operation.
- **Open.IsVHDS** MUST be set to TRUE if the application-provided file name has the .vhds extension. FALSE otherwise.
- **Open.PendingDelete** MUST be set to FALSE.

If **ServerServiceVersion** is RSVD Protocol version 1, the server MUST construct a SVHDX\_OPEN\_DEVICE\_CONTEXT\_RESPONSE structure using the received context and the server SHOULD<9> return the constructed SVHDX\_OPEN\_DEVICE\_CONTEXT\_RESPONSE and STATUS\_SUCCESS to the client.

If **ServerServiceVersion** is RSVD Protocol version 2 and the first 4 bytes, interpreted as little-endian, of the received context are equal to 0x00000001, the server MUST construct an SVHDX\_OPEN\_DEVICE\_CONTEXT\_RESPONSE structure using the received context and MUST return the constructed SVHDX\_OPEN\_DEVICE\_CONTEXT\_RESPONSE and STATUS\_SUCCESS to the client.

If **ServerServiceVersion** is RSVD Protocol version 2 and the first 4 bytes, interpreted as little-endian, of the received context are equal to 0x00000002, the server MUST return the SVHDX\_OPEN\_DEVICE\_CONTEXT\_RESPONSE\_V2 structure constructed as below and STATUS\_SUCCESS to the client:

- If the virtual SCSI disk returns the **ServerServiceVersion**, **VirtualSectorSize**, **PhysicalSectorSize**, and **VirtualSize** fields, the server MUST construct an SVHDX\_OPEN\_DEVICE\_CONTEXT\_RESPONSE\_V2 structure as follows:
  - The **Version**, **HasInitiatorId**, **Reserved**, **InitiatorId**, **Flags**, **OriginatorFlags**, **OpenRequestId**, **InitiatorHostNameLength** and **InitiatorHostName** fields are set to the value received in the request context.
  - **VirtualDiskPropertiesInitialized** is set to TRUE.
  - **ServerServiceVersion** is set to the value received from the virtual SCSI disk.
  - **VirtualSectorSize** is set to the value received from the virtual SCSI disk.
  - **PhysicalSectorSize** is set to the value received from the virtual SCSI disk.
  - **VirtualSize** is set to the value received from the virtual SCSI disk.
- Otherwise, the server MUST construct an SVHDX\_OPEN\_DEVICE\_CONTEXT\_RESPONSE\_V2 structure using the received context.

### 3.2.5.2 Receiving a Close Request

Note: Some of the information in this section is subject to change because it applies to a preliminary product version, and thus may differ from the final version of the software when released. All behavior notes that pertain to the preliminary product version contain specific references to it in the Product Behavior appendix.

When the server receives a request to close a shared virtual disk file, the server MUST verify the following:

The server MUST locate the **Open** in the **OpenTable** where **Open.LocalOpen** matches the **Open** provided by the SMB server, as specified in [\[MS-SMB2\]](#) section 3.3.4.17.

The server MUST close the underlying object store open.

If **Open.PendingDelete** is TRUE, the server MUST pass the request to the underlying object store to delete the file.

If under the underlying object store return success, the server MUST remove the **Open** from the **OpenTable**, free the **Open** object, and MUST return STATUS\_SUCCESS to the client.

Otherwise, the server MUST return the received error code to the client.

### 3.2.5.3 Receiving a Read Request

When the server receives a read request, the server MUST locate the Open in the OpenTable, where Open.LocalOpen matches the Open provided by the SMB2 server, as specified in [\[MS-SMB2\]](#) section 3.2.5.12.

If no **Open** is found, the server MUST fail the request with the STATUS\_INVALID\_PARAMETER code.

If the **Open** is found and **Open.InitiatorId** is zero, the server MUST process as follows:

- If **Open.SenseErrorSequence** is 0xFF, the server MUST reset **Open.SenseErrorSequence** to 0x00. Otherwise, the server MUST increment the **Open.SenseErrorSequence** by 0x01.
- The server MUST update **SenseError** in **Open.SenseErrorDataList** at index **Open.SenseErrorSequence** as follows:
  - **SenseError.StatusKey** MUST be set to **Open.SenseErrorSequence**.
  - Update other fields of **SenseError** with an implementation-specific [<10>](#) value.
- The server MUST return the error (STATUS\_SVHDX\_ERROR\_STORED | **SenseError.StatusKey**) to the client.

If the **Open** is found and the FILE\_NO\_INTERMEDIATE\_BUFFERING bit is not set in **Open.CreateOptions**, the server MUST fail the request with the STATUS\_NOT\_SUPPORTED code.

If the **Open** is found and **Open.IsVirtualSCSIDisk** is FALSE, the server MUST issue a read to the underlying object store; otherwise the server MUST pass the request to the virtual SCSI disk in an implementation-specific manner.

If the underlying object store or virtual SCSI disk indicates the read is successful, the server MUST return the read data buffer and success to the client.

If the underlying object store or virtual SCSI disk indicates that the read failed, and the received error code is specified in the section [2.2.3](#), the server MUST return the error code.

If the underlying object store is the virtual SCSI disk and the error code is not specified in section 2.2.3, the server MUST store the received sense data and return an error as follows:

- If **Open.SenseErrorSequence** is 0xFF, the server MUST reset **Open.SenseErrorSequence** to 0x00. Otherwise, the server MUST increment the **Open.SenseErrorSequence** by 0x01.
- The server MUST update **SenseError** in **Open.SenseErrorDataList** at index **Open.SenseErrorSequence** as follows:
  - **SenseError.StatusKey** MUST be set to **Open.SenseErrorSequence**.
  - **SenseError.SrbStatus** MUST be set to the value provided by the virtual SCSI disk.
  - **SenseError.ScsiStatus** MUST be set to the value provided by the virtual SCSI disk.
  - **SenseError.SenseData** MUST be set to the data provided by the virtual SCSI disk. [<11>](#)

- The server MUST return the error (STATUS\_SVHDX\_ERROR\_STORED | **SenseError.StatusKey**) to the client.

### 3.2.5.4 Receiving a Write Request

When the server receives a write request, the server MUST locate the **Open** in the **OpenTable** where **Open.LocalOpen** matches the **Open** provided by the SMB2 server, as specified in [\[MS-SMB2\]](#) section 3.3.5.13.

If no **Open** is found, the server MUST fail the request with the STATUS\_INVALID\_PARAMETER error code.

If the **Open** is found and **Open.InitiatorId** is zero, the server MUST process as follows:

- If **Open.SenseErrorSequence** is 0xFF, the server MUST reset **Open.SenseErrorSequence** to 0x00. Otherwise, the server MUST increment the **Open.SenseErrorSequence** by 0x01.
- The server MUST update **SenseError** in **Open.SenseErrorDataList** at index **Open.SenseErrorSequence** as follows:
  - **SenseError.StatusKey** MUST be set to **Open.SenseErrorSequence**.
  - Update other fields of **SenseError** with an implementation-specific [<12>](#) value.
- The server MUST return the error (STATUS\_SVHDX\_ERROR\_STORED | **SenseError.StatusKey**) to the client.

If the **Open** is found and the FILE\_NO\_INTERMEDIATE\_BUFFERING bit is not set in **Open.CreateOptions**, the server MUST fail the request with the STATUS\_NOT\_SUPPORTED code.

If the **Open** is found and **Open.IsVirtualSCSIDisk** is FALSE, the server MUST issue a write to the underlying object store; otherwise the server MUST pass the request to the virtual SCSI disk in an implementation-specific manner.

If the underlying object store or virtual SCSI disk indicates that the write was successful, the server MUST return success to the client.

If the underlying object store or virtual SCSI disk indicates the write was denied due to a **persistent reservation** conflict, as described in [\[SPC-3\]](#) section 5.6, the server MUST fail the request with error STATUS\_SVHDX\_RESERVATION\_CONFLICT.

Otherwise, if the received error code is specified in the section [2.2.3](#), the server MUST return the error code.

If the underlying object store is the virtual SCSI disk and the error code is not specified in section [2.2.3](#), the server MUST store the received sense data and return an error as follows:

- If **Open.SenseErrorSequence** is 0xFF, the server MUST reset **Open.SenseErrorSequence** to 0x00. Otherwise, the server MUST increment the **Open.SenseErrorSequence** by 0x01.
- The server MUST update **SenseError** in **Open.SenseErrorDataList** at index **Open.SenseErrorSequence** as follows:
  - **SenseError.StatusKey** MUST be set to **Open.SenseErrorSequence**.
  - **SenseError.SrbStatus** MUST be set to the value provided by the virtual SCSI disk.
  - **SenseError.ScsiStatus** MUST be set to the value provided by the virtual SCSI disk.
  - **SenseError.SenseData** MUST be set to the data provided by the virtual SCSI disk. [<13>](#)

- The server MUST return the error (STATUS\_SVHDX\_ERROR\_STORED | **SenseError.StatusKey**) to the client.

### 3.2.5.5 Receiving a Tunnel Operation Request

When the server receives a tunnel operation request, the server MUST locate the **Open** in the **OpenTable** where **Open.LocalOpen** matches the **Open** provided by the SMB2 server, as specified in [\[MS-SMB2\]](#) section 3.3.5.13.

If no **Open** is found, the server MUST fail the request and return STATUS\_INVALID\_PARAMETER.

If the size of the tunnel operation request including the header is less than 16, the server MUST fail the request with STATUS\_BUFFER\_TOO\_SMALL.

If an **Open** is found and if the bitwise AND of the **OperationCode** value and 0xFF000000 is not equal to 0x02000000, the server MUST fail the request with STATUS\_INVALID\_DEVICE\_REQUEST.

If any of the following conditions is TRUE, the server MUST construct the SVHDX\_TUNNEL\_OPERATION\_HEADER with the OperationCode and RequestId fields set to the value received in the request, and with the Status field set as follows.

- If **ServerServiceVersion** is equal to RSVD Protocol version 1(0x00000001) and the bitwise AND of the **OperationCode** value and 0x00FFF000 is not equal to 0x00001000, the **Status** field MUST be set to STATUS\_SVHDX\_VERSION\_MISMATCH.
- If **ServerServiceVersion** is equal to RSVD Protocol version 2(0x00000002) and the bitwise AND of the **OperationCode** value and 0x00FFF000 is not equal to 0x00001000 or 0x00002000, the **Status** field MUST be set to STATUS\_SVHDX\_VERSION\_MISMATCH.
- If the **OperationCode** value does not exist in the tunnel operation list as specified in section [2.2.2](#), the **Status** field MUST be set to STATUS\_INVALID\_PARAMETER.

The server MUST return SVHDX\_TUNNEL\_OPERATION\_HEADER to the client.

Processing for a specific **OperationCode** is as specified in subsequent sections.

#### 3.2.5.5.1 Receiving a Virtual Disk File Information Request

When the server receives a request **OperationCode** equal to RSVD\_TUNNEL\_GET\_INITIAL\_INFO\_OPERATION, the request handling proceeds as follows:

If **MaxOutputResponse** is less than 40 (size of SVHDX\_TUNNEL\_OPERATION\_HEADER + size of SVHDX\_TUNNEL\_INITIAL\_INFO\_RESPONSE), the server MUST fail the request with STATUS\_BUFFER\_TOO\_SMALL.

The server MUST issue a file information request to the virtual SCSI disk in an implementations-specific manner, and update the received response to the client.

If the virtual SCSI disk indicates an error, the server MUST fail the request with the error received by placing it into the **Status** field of the SVHDX\_TUNNEL\_OPERATION\_HEADER, and return the header to the client.

Otherwise, the server MUST construct an SVHDX\_TUNNEL\_INITIAL\_INFO\_RESPONSE structure as specified in section [2.2.4.14](#) with the following values:

The SVHDX\_TUNNEL\_OPERATION\_HEADER MUST be initialized as follows:

- **OperationCode** MUST be set to the OperationCode value of the request.
- **Status** MUST be set to STATUS\_SUCCESS



- The **RequestId** field MUST be set to the value received in the request.

The SVHDX\_TUNNEL\_INITIAL\_INFO\_RESPONSE structure MUST be initialized as follows:

- **ServerVersion** MUST be set to the **ServerServiceVersion**.
- **SectorSize** MUST be set to the sector size of the shared virtual disk received from the virtual SCSI disk.
- **PhysicalSectorSize** MUST be set to the physical sector size of the shared virtual disk received from the virtual SCSI disk.
- **VirtualSize** MUST be set to the virtual size of the shared virtual disk received from the virtual SCSI disk.

The response MUST be sent to the client.

### 3.2.5.5.2 Receiving a Connection Status Request

When the server receives a request with an **OperationCode** equal to RSVD\_TUNNEL\_CHECK\_CONNECTION\_STATUS\_OPERATION, the request handling proceeds as follows:

If **MaxOutputResponse** is less than 16 (size of SVHDX\_TUNNEL\_OPERATION\_HEADER), the server MUST fail the request with STATUS\_BUFFER\_OVERFLOW.

The server MUST construct an SVHDX\_TUNNEL\_CHECK\_CONNECTION\_RESPONSE structure as specified in section [2.2.4.2](#) with the following values:

The SVHDX\_TUNNEL\_OPERATION\_HEADER MUST be initialized as follows:

- **OperationCode** MUST be set to the OperationCode value of the request.
- **Status** MUST be set to STATUS\_SUCCESS.
- The **RequestId** field MUST be set to the value received in the request.

The response MUST be sent to the client.

### 3.2.5.5.3 Receiving a Status Request for a Prior Operation

When the server receives a request with **OperationCode** equal to RSVD\_TUNNEL\_SRB\_STATUS\_OPERATION, the request handling proceeds as follows:

If **MaxOutputResponse** is less than 40 (size of SVHDX\_TUNNEL\_OPERATION\_HEADER + size of SVHDX\_TUNNEL\_SRB\_STATUS\_RESPONSE), the server MUST fail the request with STATUS\_INVALID\_PARAMETER.

If **SenseInfoExLength** field of the request is not equal to the size of the **SenseDataEx**, the server MUST fail the request with STATUS\_INVALID\_PARAMETER.

The server MUST locate the **SenseError** in **Open.SenseErrorDataList** where **SenseError.StatusKey** matches the **StatusKey** of the request.

If **SenseError** is not found, the server MUST return STATUS\_SVHDX\_ERROR\_NOT\_AVAILABLE.

If **SenseError** is found, the server MUST construct the SVHDX\_TUNNEL\_SRB\_STATUS\_RESPONSE structure as specified in section [2.2.4.4](#) with the following values:

The SVHDX\_TUNNEL\_OPERATION\_HEADER MUST be initialized as follows:

- The **OperationCode** field MUST be set to the OperationCode value of the request.
- The **Status** field MUST be set to STATUS\_SUCCESS.
- The **RequestId** field MUST be set to the value received in the request.

The SVHDX\_TUNNEL\_SRB\_STATUS\_RESPONSE packet MUST be initialized as follows:

- The **StatusKey** field MUST be set to the value received in the request.
- The **SenseInfoAutoGenerated** field MUST be set to the value received from the virtual SCSI disk.
- The **SrbStatus** field MUST be set to **SenseError.SrbStatus**.
- The **ScsiStatus** field MUST be set to **SenseError.ScsiStatus**.
- The **SenseInfoExLength** field MUST be set to the length of the **SenseError.SenseData**, in bytes.
- The **SenseDataEx** field MUST be set to **SenseError.SenseData**.

The response MUST be sent to the client.

#### 3.2.5.5.4 Receiving a Shared Virtual Disk Information Request

When the server receives a request with an **OperationCode** equal to RSVD\_TUNNEL\_GET\_DISK\_INFO\_OPERATION, the request handling proceeds as follows:

If **MaxOutputResponse** is less than 72 (size of SVHDX\_TUNNEL\_OPERATION\_HEADER + size of SVHDX\_TUNNEL\_DISK\_INFO\_RESPONSE), the server MUST fail the request with STATUS\_BUFFER\_TOO\_SMALL.

The server MUST issue a query disk information request to the virtual SCSI disk in an implementation-specific manner and update the received response to the client.

If the virtual SCSI disk indicates an error, the server MUST fail the request with the error received, placing into the **Status** field of the SVHDX\_TUNNEL\_OPERATION\_HEADER, and return the header to the client.

Otherwise, the server MUST construct an SVHDX\_TUNNEL\_DISK\_INFO\_RESPONSE structure as specified in section [2.2.4.4](#) with the following values:

The SVHDX\_TUNNEL\_OPERATION\_HEADER MUST be initialized as follows:

- **OperationCode** MUST be set to the OperationCode value of the request.
- **Status** MUST be set to STATUS\_SUCCESS.
- The **RequestId** field MUST be set to the value received in the request.

The SVHDX\_TUNNEL\_DISK\_INFO\_RESPONSE structure MUST be initialized as follows:

- **DiskType** MUST be set to the value received from the virtual SCSI disk.
- If the server implements RSVD Protocol version 2 and **Open.IsVHDSet** is TRUE, **DiskFormat** MUST be set to VIRTUAL\_STORAGE\_TYPE\_DEVICE\_VHDSET. Otherwise, **DiskFormat** MUST be set to VIRTUAL\_STORAGE\_TYPE\_DEVICE\_VHDX.
- **BlockSize** MUST be set to the number of bytes received from virtual SCSI disk.
- **LinkageId** MUST be set to the linkage GUID received from virtual SCSI disk.

- **IsMounted** MUST be set to TRUE if the virtual SCSI disk indicates that the disk is ready for read or write operations. Otherwise, the server MUST set this field to FALSE.
- **Is4kAligned** MUST be set to TRUE if the virtual SCSI disk indicates that the disk sectors are aligned to 4 kilobytes. Otherwise, the server MUST set this field to FALSE.
- **Reserved** MUST be set to zero.
- **FileSize** MUST be set to the value received from the virtual SCSI disk
- **VirtualDiskId** MUST be set to the virtual disk GUID received from virtual SCSI disk.

The response MUST be sent to the client.

### 3.2.5.5.5 Receiving a SCSI Command Request

When the server receives a request with an **OperationCode** equal to `RSVD_TUNNEL_SCSI_OPERATION`, the request handling proceeds as follows:

If **MaxOutputResponse** is less than 52 (size of `SVHDX_TUNNEL_OPERATION_HEADER` + size of `SVHDX_TUNNEL_SCSI_RESPONSE`), the server MUST fail the request with `STATUS_INVALID_PARAMETER`.

If any of the following conditions is TRUE, the server MUST generate an error response as specified below:

- Size of the request is less than 36
- **Length** field of the request is not equal to 36 bytes
- **SenseInfoExLength** is greater than (size of `CDBBuffer` + 4)
- **CDBLength** is greater than the size of `CDBBuffer`
- **DataIn** is 0x01 and **DataTransferLength** is less than the size of the **DataBuffer** field
- **Open.InitiatorId** is zero

The `SVHDX_TUNNEL_OPERATION_HEADER` MUST be initialized. **OperationCode** and **RequestId** fields MUST be set to the values received in the request. If **Open.InitiatorId** is zero, the **Status** field MUST be set to `STATUS_INVALID_HANDLE`. Otherwise, the **Status** field MUST be set to `STATUS_INVALID_PARAMETER`. The `SVHDX_TUNNEL_SCSI_RESPONSE` MUST be set to the data received in `SVHDX_TUNNEL_SCSI_REQUEST` structure of the request. The server MUST send `SVHDX_TUNNEL_OPERATION_HEADER` and `SVHDX_TUNNEL_SCSI_RESPONSE` to the client and SHOULD NOT [<14>](#) add additional data to the response.

Otherwise, the server MUST issue a CDB command to the virtual SCSI disk in an implementation-specific manner.

If **DataIn** is 0 and the data returned by the virtual SCSI disk is greater than **DataTransferLength** in the request, the server MUST fail the request with `STATUS_INVALID_PARAMETER`.

The server MUST construct a `SVHDX_TUNNEL_SCSI_RESPONSE` structure as specified in section [2.2.4.8](#) with the following values:

The `SVHDX_TUNNEL_OPERATION_HEADER` MUST be initialized as follows:

- The **OperationCode** field MUST be set to the **OperationCode** value of the request.
- The **Status** field MUST be set to the value received from the virtual SCSI disk.

- The **RequestId** field MUST be set to the value received in the request.

The SVHDX\_TUNNEL\_SCSI\_RESPONSE MUST be initialized as follows:

- The **SenseInfoAutoGenerated** field MUST be set to the value received from the virtual SCSI disk.
- The **SrbStatus** field MUST be set to one of the values specified in section [2.2.5](#) reflecting the status indicated by the virtual SCSI disk.
- The **SCSIStatus** field MUST be set to value received from the virtual SCSI disk.
- The **DataIn** field MUST be set to the value received in the request.
- **SrbFlags** MUST be set to the value received in the request.
- The **CDBLength** field MUST be set to the value received in the request.
- The **Length** field is set to the size, in bytes, of the SVHDX\_TUNNEL\_SCSI\_RESPONSE structure that is constructed following the syntax specified in section 2.2.4.8.
- The **SenseInfoExLength** field is set to the length of the sense information received from the virtual SCSI disk, if any.
- The **SenseDataEx** field is set to the sense information received from the virtual SCSI disk, if any.
- The **DataTransferLength** is set to the length of the additional data returned by the virtual SCSI disk, if any.
- The **DataBuffer** is set to the additional data returned by the virtual SCSI disk, if any.

The response MUST be sent to the client.

### 3.2.5.5.6 Receiving a Validate Disk Request

When the server receives a request with an **OperationCode** equal to RSVD\_TUNNEL\_VALIDATE\_DISK\_OPERATION, the request handling proceeds as follows:

If **MaxOutputResponse** is less than 17 (size of SVHDX\_TUNNEL\_OPERATION\_HEADER + size of SVHDX\_TUNNEL\_VALIDATE\_DISK\_RESPONSE), the server MUST fail the request with STATUS\_BUFFER\_TOO\_SMALL.

The server MUST issue a validate request to the virtual SCSI disk in an implementation-specific manner.

The server MUST construct an SVHDX\_TUNNEL\_VALIDATE\_DISK\_RESPONSE structure, as specified in section [2.2.4.10](#), with the following values:

The SVHDX\_TUNNEL\_OPERATION\_HEADER MUST be initialized as follows:

- **OperationCode** MUST be set to the OperationCode value of the request.

If the virtual SCSI disk indicates command success, the **Status** MUST be set to STATUS\_SUCCESS; otherwise, it MUST be set to the error code provided by the virtual SCSI disk.

The **RequestId** field MUST be set to the value received in the request.

The **IsValidDisk** field MUST be set to TRUE if the virtual SCSI disk indicates that the disk is valid. Otherwise, the server MUST set this field to FALSE.

The response MUST be sent to the client.

### 3.2.5.5.7 Receiving a Start Meta-Operation Request

Note: All of the information in this section is subject to change because it applies to a preliminary product version, and thus may differ from the final version of the software when released. All behavior notes that pertain to the preliminary product version contain specific references to it as an aid to the reader.

When the server receives a request with an **OperationCode** equal to `RSVD_TUNNEL_META_OPERATION_START`, the request handling proceeds as follows:

If the **OperationType** is not one of **SvhdxMetaOperationTypeCreateSnapshot**, **SvhdxMetaOperationTypeOptimize**, or **SvhdxMetaOperationTypeExtractVHD**, the operation is failed with the `STATUS_INVALID_PARAMETER`.

Processing for a specific **OperationType** is as specified in sections [3.2.5.5.7.1](#), [3.2.5.5.7.2](#), and [3.2.5.5.7.3](#).

#### 3.2.5.5.7.1 Receiving a Create Snapshot Request

Note: All of the information in this section is subject to change because it applies to a preliminary product version, and thus may differ from the final version of the software when released. All behavior notes that pertain to the preliminary product version contain specific references to it as an aid to the reader.

When the server receives a request with **OperationType** set to **SvhdxMetaOperationTypeCreateSnapshot**, the request processing proceeds as follows:

If the input buffer is less than 92 (size of `SVHDX_TUNNEL_OPERATION_HEADER` + size of the fixed part of `SVHDX_META_OPERATION_START_REQUEST` + size of the fixed part of `SVHDX_META_OPERATION_CREATE_SNAPSHOT`) + **ParametersPayloadSize** bytes, the server MUST fail the request with `STATUS_BUFFER_TOO_SMALL`.

If the **SnapshotType** is not **SvhdxSnapshotTypeVM** or **SvhdxSnapshotTypeCDP** or **SvhdxSnapshotTypeWriteable**, the operation is failed with `STATUS_INVALID_PARAMETER_1`.

If **Stage1** is **SvhdxSnapshotStageInvalid**, the operation is failed with `STATUS_INVALID_PARAMETER_2`.

If any of the following conditions is TRUE, the server MUST fail the operation with `STATUS_INVALID_PARAMETER_5`:

- If the **Flags** field is nonzero and **SnapshotType** is not **SvhdxSnapshotTypeVM**
- If the **Flags** field is set to `SVHDX_SNAPSHOT_DISK_FLAG_ENABLE_CHANGE_TRACKING` and **Stage1** is not **SvhdxSnapshotStageInitialize**.
- If **SnapshotType** is **SvhdxSnapshotTypeVM** and the **Flags** field is a value other than 0 or `SVHDX_SNAPSHOT_DISK_FLAG_ENABLE_CHANGE_TRACKING`.

Each **Stage2** through **Stage6** field is checked with the following:

- If the current stage value is less than or equal to that of the prior stage, the operation is failed with `STATUS_INVALID_PARAMETER_3`.
- If the current stage value is not **SvhdxSnapshotStageInvalid** and the server has observed an **SvhdxSnapshotStageInvalid** for this request, the operation is failed with `STATUS_INVALID_PARAMETER4`.

If **Open.IsVHDSet** is FALSE, the server MUST fail the request with `STATUS_INVALID_DEVICE_REQUEST`.

The server MUST issue a Create Snapshot request to the virtual SCSI disk in an implementation-specific manner.

If the virtual SCSI disk returned `STATUS_SUCCESS`, the server MUST initialize a Snapshot object and MUST set **Snapshot.SnapshotId** to the **SnapshotId** field in the request and **Snapshot.ChangeTracking** to `TRUE` if the `SVHDX_SNAPSHOT_DISK_FLAG_ENABLE_CHANGE_TRACKING` bit is set in the `Flags` field in the request. The server MUST insert the Snapshot object into **Open.SnapshotList**.

The server MUST construct an `SVHDX_TUNNEL_OPERATION_HEADER` structure as specified in section [2.2.4.11](#), with the following values:

- The **OperationCode** field MUST be set to the **OperationCode** value of the request.
- The **RequestId** field MUST be set to the value received in the request.
- The **Status** field MUST be set to the status returned by the virtual SCSI disk.

If the **SnapshotType** is **SvhdxSnapshotTypeCDP**, the server MUST append an **SVHDX\_META\_OPERATION\_REPLY** structure to the `SVHDX_TUNNEL_OPERATION_HEADER` in response, as specified in section [2.2.4.18](#), with the following values:

- The **ChangeTrackingErrorStatus** field MUST be set to one of the change-tracking status values specified in section [2.2.4.18](#); this value is received from the virtual SCSI disk, indicating any error in the change tracking.

The server MUST send the response to the client.

### 3.2.5.5.7.2 Receiving an Optimize Request

Note: All of the information in this section is subject to change because it applies to a preliminary product version, and thus may differ from the final version of the software when released. All behavior notes that pertain to the preliminary product version contain specific references to it as an aid to the reader.

When the server receives a request in which the **OperationType** is **SvhdxMetaOperationTypeOptimize**, the request processing proceeds as follows:

The server MUST issue a VHD set optimize request to the virtual SCSI disk in an implementation-specific manner.

The server MUST set the **Status** field of the `SVHDX_TUNNEL_OPERATION_HEADER` as `STATUS_SUCCESS`, and return the header to the client.

### 3.2.5.5.7.3 Receiving an ExtractVHD Request

Note: All of the information in this section is subject to change because it applies to a preliminary product version, and thus may differ from the final version of the software when released. All behavior notes that pertain to the preliminary product version contain specific references to it as an aid to the reader.

When the server receives a request in which the **OperationType** is **SvhdxMetaOperationTypeExtractVHD**, the request processing proceeds as follows:

If the input buffer is less than 88 (size of `SVHDX_TUNNEL_OPERATION_HEADER` + size of the fixed part of `SVHDX_META_OPERATION_START_REQUEST` + size of the fixed part of `SVHDX_META_OPERATION_EXTRACT`) + **DestinationVhdNameLength** bytes, the server MUST fail the request with `STATUS_BUFFER_TOO_SMALL`.

If any of the following conditions is TRUE, the server MUST fail the request with STATUS\_INVALID\_PARAMETER:

- **DestinationVhdNameLength** is 0.
- The UNICODE string in the **DestinationVhdName** contains any character that is not allowed for a file name, as specified in [\[MS-FSCC\]](#) section 2.1.5.
- The **SourceSnapshotId** is not a valid snapshot ID.
- The **SourceLimitSnapshotId** is nonzero and is not a valid snapshot ID.

If any of the following conditions is TRUE, the server MUST fail the operation with STATUS\_INVALID\_PARAMETER\_2:

- If the **Flags** field is nonzero and **SnapshotType** is not **SvhdxSnapshotTypeVM**.
- If **SnapshotType** is **SvhdxSnapshotTypeVM** and the **Flags** field is a value other than 0 or SVHDX\_EXTRACT\_SNAPSHOTS\_FLAG\_DELETE\_ON\_CLOSE.

The server MUST issue an extract VHD request to the virtual SCSI disk in an implementation-specific manner.

If SVHDX\_EXTRACT\_SNAPSHOTS\_FLAG\_DELETE\_ON\_CLOSE is set in the **Flags** field, the server MUST set **Open.PendingDelete** to TRUE.

The server MUST set the **Status** field of the SVHDX\_TUNNEL\_OPERATION\_HEADER as the error returned by the virtual SCSI disk, and return the header to the client.

#### 3.2.5.5.7.4 Receiving a Convert to VHD Set Request

Note: All of the information in this section is subject to change because it applies to a preliminary product version, and thus may differ from the final version of the software when released. All behavior notes that pertain to the preliminary product version contain specific references to it as an aid to the reader.

When the server receives a request in which the **OperationType** is **SvhdxMetaOperationTypeConvertToVHDSet**, the request processing proceeds as follows:

If the input buffer is less than 44 (size of SVHDX\_TUNNEL\_OPERATION\_HEADER + size of the fixed part of SVHDX\_META\_OPERATION\_START\_REQUEST + size of the fixed part of SVHDX\_META\_OPERATION\_CONVERT\_TO\_VHDSET) + **DestinationVhdSetNameLength** bytes, the server MUST fail the request with STATUS\_BUFFER\_TOO\_SMALL.

If the **DestinationVhdSetName** field doesn't contain the .vhds extension, the server MUST fail the request with STATUS\_INVALID\_PARAMETER.

The server MUST issue a convert to VHD set request to the virtual SCSI disk in an implementation-specific manner.

The server MUST set the **Status** field of the SVHDX\_TUNNEL\_OPERATION\_HEADER to the error returned by the virtual SCSI disk, and return the header to the client.

#### 3.2.5.5.7.5 Receiving a Resize Request

Note: All of the information in this section is subject to change because it applies to a preliminary product version, and thus may differ from the final version of the software when released. All behavior notes that pertain to the preliminary product version contain specific references to it as an aid to the reader.

When the server receives a request in which the **OperationType** is **SvhdxMetaOperationTypeResize**, the request processing proceeds as follows:

If the input buffer is less than 52 (size of SVHDX\_TUNNEL\_OPERATION\_HEADER + size of the fixed part of SVHDX\_META\_OPERATION\_START\_REQUEST + size of SVHDX\_META\_OPERATION\_RESIZE\_VIRTUAL\_DISK) bytes, the server MUST fail the request with STATUS\_BUFFER\_TOO\_SMALL.

If **ShrinkToMinimumSafeSize** is TRUE and any of the following conditions is satisfied, the server MUST fail the request with STATUS\_INVALID\_PARAMETER\_1:

- NewSize is not zero.
- ExpandOnly is TRUE.
- AllowUnsafeVirtualSize is TRUE.

If **ExpandOnly** is TRUE and **NewSize** is less than current virtual disk size, the server MUST fail the request with STATUS\_INVALID\_PARAMETER.

The server MUST issue a resize VHD set request to the virtual SCSI disk in an implementation-specific manner.

The server MUST set the **Status** field of the SVHDX\_TUNNEL\_OPERATION\_HEADER to the error returned by the virtual SCSI disk, and return the header to the client.

### 3.2.5.5.7.6 Receiving an Apply Snapshot Request

Note: All of the information in this section is subject to change because it applies to a preliminary product version, and thus may differ from the final version of the software when released. All behavior notes that pertain to the preliminary product version contain specific references to it as an aid to the reader.

When the server receives a request in which the **OperationType** is **SvhdxMetaOperationTypeApplySnapshot**, the request processing proceeds as follows:

If the input buffer is less than 60 bytes (size of SVHDX\_TUNNEL\_OPERATION\_HEADER + size of the fixed part of SVHDX\_META\_OPERATION\_START\_REQUEST + size of SVHDX\_APPLY\_SNAPSHOT\_PARAMS), the server MUST fail the request with STATUS\_BUFFER\_TOO\_SMALL.

If **SnapshotType** is neither **SvhdxSnapshotTypeVM** nor **SvhdxSnapshotTypeWriteable**, then the server MUST fail the request with STATUS\_INVALID\_PARAMETER\_1.

Otherwise, the server MUST issue the VHD set apply snapshot request to the virtual SCSI disk in an implementation-specific manner.

The server MUST set the SVHDX\_TUNNEL\_OPERATION\_HEADER structure as specified in section [2.2.4.11](#), with the following values:

- The **OperationCode** field MUST be set to the **OperationCode** value of the request
- The **Status** field MUST be set to status returned by virtual SCSI disk.
- The **RequestId** field MUST be set to the value received in the request.

The server MUST send the response to the client.

### 3.2.5.5.8 Receiving a Query Meta-Operation Progress Request



Note: All of the information in this section is subject to change because it applies to a preliminary product version, and thus may differ from the final version of the software when released. All behavior notes that pertain to the preliminary product version contain specific references to it as an aid to the reader.

When the server receives a request in which **OperationCode** is equal to `RSVD_TUNNEL_META_OPERATION_QUERY_PROGRESS`, the request handling proceeds as follows:

The server MUST issue a Query Meta-operation request to the virtual SCSI disk in an implementation-specific manner.

If the virtual SCSI disk indicates an error, the server MUST fail the request with the error received, placing it into the **Status** field of the `SVHDX_TUNNEL_OPERATION_HEADER`, and return the header to the client.

Otherwise, the server MUST construct a `VHDX_META_OPERATION_QUERY_PROGRESS_RESPONSE` structure as specified in section [2.2.4.4](#), with the following values:

The `SVHDX_TUNNEL_OPERATION_HEADER` MUST be initialized as follows:

- The **OperationCode** field MUST be set to the **OperationCode** value of the request.
- The **Status** field MUST be set to `STATUS_SUCCESS`.
- The **RequestId** field MUST be set to the value received in the request.

The `SVHDX_META_OPERATION_QUERY_PROGRESS_RESPONSE` structure MUST be initialized as follows:

- **CurrentProgressValue** MUST be set to the value received from the virtual SCSI disk.
- **CompleteValue** MUST be set to the value received from the virtual SCSI disk.

The response MUST be sent to the client.

### 3.2.5.5.9 Receiving a Query VHD Set Information Request

Note: All of the information in this section is subject to change because it applies to a preliminary product version, and thus may differ from the final version of the software when released. All behavior notes that pertain to the preliminary product version contain specific references to it as an aid to the reader.

When the server receives a request in which **OperationCode** is equal to `RSVD_TUNNEL_VHDSET_QUERY_INFORMATION`, the request handling proceeds as follows:

If the provided input buffer is not equal to the size of the `SVHDX_TUNNEL_VHDSET_QUERY_INFORMATION_REQUEST` structure, then the server MUST fail the request with `STATUS_BUFFER_TOO_SMALL`.

If the **Open.IsVHDSet** is `FALSE`, the server MUST fail the request with `STATUS_INVALID_DEVICE_REQUEST`.

If **VHDSetInformationType** is not one of the valid information types specified in section [2.2.4.19](#), the server MUST fail the request with `STATUS_INVALID_PARAMETER_1`.

If **VHDSetInformationType** is **SvhdxVHDSetInformationTypeSnapshotEntry** and the supplied **SnapshotType** is not **SvhdxSnapshotTypeVM** or **SvhdxSnapshotTypeCDP** or **SvhdxSnapshotTypeWriteable**, the server MUST fail the request with `STATUS_INVALID_PARAMETER_1`.

If **VHDSetInformationType** is **SvhdxVHDSetInformationTypeSnapshotList** and the supplied **SnapshotType** is not **SvhdxSnapshotTypeVM**, the server MUST fail the request with **STATUS\_INVALID\_PARAMETER\_1**.

If **VHDSetInformationType** is neither **SvhdxVHDSetInformationTypeSnapshotEntry** nor **SvhdxVHDSetInformationTypeSnapshotList** and **SnapshotType** is nonzero, the server MUST fail the request with **STATUS\_INVALID\_PARAMETER**.

The server MUST issue a query VHD set information request to the virtual SCSI disk in an implementation-specific manner.

If the virtual SCSI disk indicates an error, the server MUST fail the request with the error received, placing it into the **Status** field of the **SVHDX\_TUNNEL\_OPERATION\_HEADER**, and return the header to the client.

Otherwise, the server MUST process as follows:

- If **VHDSetInformationType** is **SvhdxVHDSetInformationTypeSnapshotEntry**, the server MUST construct a **SVHDX\_TUNNEL\_VHDSET\_QUERY\_INFORMATION\_SNAPSHOT\_ENTRY\_RESPONSE** structure as specified in section [2.2.4.21](#), with the following values:
  - The **SVHDX\_TUNNEL\_OPERATION\_HEADER** MUST be initialized as follows:
    - **OperationCode** MUST be set to the **OperationCode** value of the request.
    - **Status** MUST be set to **STATUS\_SUCCESS**.
    - The **RequestId** field MUST be set to the value received in the request.
  - The **SVHDX\_TUNNEL\_VHDSET\_QUERY\_INFORMATION\_SNAPSHOT\_ENTRY\_RESPONSE** structure MUST be initialized as follows:
    - **VHDSetInformationType** MUST be set to **SvhdxVHDSetInformationTypeSnapshotEntry**.
    - **SnapshotType** MUST be set to the value received from the virtual SCSI disk.
    - **IsValidSnapshot** MUST be set to the value received from the virtual SCSI disk.
    - **SnapshotId** MUST be set to the **SnapshotId** provided in the request.
    - **ParentSnapshotId** MUST be set to zero.
    - **LogFileId** MUST be set to zero.
  - The response MUST be sent to the client.
- If **VHDSetInformationType** is **SvhdxVHDSetInformationTypeSnapshotList**, **SvhdxVHDSetInformationTypeCdpSnapshotActiveList**, or **SvhdxVHDSetInformationTypeCdpSnapshotInactiveList**, the server MUST construct a **SVHDX\_TUNNEL\_VHDSET\_QUERY\_INFORMATION\_SNAPSHOT\_LIST** structure as specified in section [2.2.4.20](#), with the following values:
  - The **SVHDX\_TUNNEL\_OPERATION\_HEADER** MUST be initialized as follows:
    - **OperationCode** MUST be set to the **OperationCode** value of the request.
    - **Status** MUST be set to **STATUS\_SUCCESS**.
    - The **RequestId** field MUST be set to the value received in the request.

- The **SVHDX\_TUNNEL\_VHDSET\_QUERY\_INFORMATION\_SNAPSHOT\_LIST** structure MUST be initialized as follows:
  - **VHDSetInformationType** MUST be set to **SvhdxVHDSetInformationTypeSnapshotList**.
  - **ResponseComplete** MUST be set to 0x01 if the sum of the size of the snapshot IDs received from the virtual SCSI disk, the size of SVHDX\_TUNNEL\_OPERATION\_HEADER, and the size of the fixed part of SVHDX\_TUNNEL\_VHDSET\_QUERY\_INFORMATION\_SNAPSHOT\_LIST\_RESPONSE is less than or equal to **MaxOutputResponse**.
  - **NumberOfSnapshots** MUST be set to the number of snapshot IDs received from the virtual SCSI disk.
  - If **ResponseComplete** is set to 0x01, **SnapshotIds** MUST be set to the value received from the virtual SCSI disk. Otherwise, the **SnapshotIds** field is not present.
- The response MUST be sent to the client.
- If **VHDSetInformationType** is **SvhdxVHDSetInformationTypeCdpSnapshotRoot**, the server MUST construct a **SVHDX\_TUNNEL\_VHDSET\_QUERY\_INFORMATION\_SNAPSHOT\_ENTRY\_RESPONSE** structure as specified in section 2.2.4.21, with the following values:
  - The SVHDX\_TUNNEL\_OPERATION\_HEADER MUST be initialized as follows:
    - **OperationCode** MUST be set to the **OperationCode** value of the request.
    - **Status** MUST be set to STATUS\_SUCCESS.
    - The **RequestId** field MUST be set to the value received in the request.
  - The **SVHDX\_TUNNEL\_VHDSET\_QUERY\_INFORMATION\_SNAPSHOT\_ENTRY\_RESPONSE** structure MUST be initialized as follows:
    - **VHDSetInformationType** MUST be set to **SvhdxVHDSetInformationTypeCdpSnapshotRoot**.
    - **SnapshotType** MUST be set to the value received from the virtual SCSI disk.
    - **IsValidSnapshot** MUST be set to the value received from the virtual SCSI disk.
    - **SnapshotId** MUST be set to the **SnapshotId** provided in the request.
    - **ParentSnapshotId** MUST be set to the value received from the virtual SCSI disk.
    - **LogFileId** MUST be set to the value received from the virtual SCSI disk.
  - The response MUST be sent to the client.
- If **VHDSetInformationType** is **SvhdxVHDSetInformationTypeOptimizeNeeded**, the server MUST construct an **SVHDX\_TUNNEL\_VHDSET\_QUERY\_INFORMATION\_OPTIMIZE\_RESPONSE** structure as specified in section [2.2.4.22](#), with the following values:
  - The SVHDX\_TUNNEL\_OPERATION\_HEADER MUST be initialized as follows:
    - **OperationCode** MUST be set to the **OperationCode** value of the request.
    - **Status** MUST be set to STATUS\_SUCCESS.

The response MUST be sent to the client.

### 3.2.5.5.10 Receiving a Delete Snapshot Request

Note: All of the information in this section is subject to change because it applies to a preliminary product version, and thus may differ from the final version of the software when released. All behavior notes that pertain to the preliminary product version contain specific references to it as an aid to the reader.

When the server receives a request in which **OperationCode** is equal to `RSVD_TUNNEL_DELETE_SNAPSHOT`, the request handling proceeds as follows:

If **PersistReference** is not equal to zero and **SnapshotType** is not equal to **SvhdxSnapshotTypeVM**, the server MUST return an implementation specific error.

The server MUST issue a delete snapshot request to the virtual SCSI disk in an implementation-specific manner.

The server MUST initialize the `SVHDX_TUNNEL_OPERATION_HEADER` as follows:

- **OperationCode** MUST be set to the **OperationCode** value of the request.

If the virtual SCSI disk indicates command success, the **Status** MUST be set to `STATUS_SUCCESS`; otherwise, it MUST be set to the error code provided by the virtual SCSI disk.

The **RequestId** field MUST be set to the value received in the request.

The response MUST be sent to the client.

### 3.2.5.5.11 Receiving a Change Tracking Get Parameter Request

Note: All of the information in this section is subject to change because it applies to a preliminary product version, and thus may differ from the final version of the software when released. All behavior notes that pertain to the preliminary product version contain specific references to it as an aid to the reader.

When the server receives a request with an **OperationCode** equal to `RSVD_TUNNEL_CHANGE_TRACKING_GET_PARAMETERS`, the request handling proceeds as follows:

The server MUST issue a get tracking **Parameter** request to the virtual SCSI disk in an implementation-specific manner.

If the virtual SCSI disk indicates an error, the server MUST fail the request with the error received, placing it into the **Status** field of the `SVHDX_TUNNEL_OPERATION_HEADER`, and return the header to the client.

Otherwise, the server MUST construct an `SVHDX_TUNNEL_DISK_INFO_RESPONSE` structure as specified in section [2.2.4.4](#), with the following values:

The `SVHDX_TUNNEL_OPERATION_HEADER` MUST be initialized as follows:

- **OperationCode** MUST be set to the `OperationCode` value of the request.
- **Status** MUST be set to `STATUS_SUCCESS`.
- The **RequestId** field MUST be set to the value received in the request.

The `SVHDX_CHANGE_TRACKING_GET_PARAMETERS_RESPONSE` structure MUST be initialized as follows:

- Set **ChangeTrackingStatus** as the status returned by the virtual SCSI disk.

- Set **LogFileSize** returned by the virtual SCSI disk.

The response MUST be sent to the client.

### 3.2.5.5.12 Receiving a Change Tracking Start Request

Note: All of the information in this section is subject to change because it applies to a preliminary product version, and thus may differ from the final version of the software when released. All behavior notes that pertain to the preliminary product version contain specific references to it as an aid to the reader.

When the server receives a request with **OperationCode** equal to `RSVD_TUNNEL_CHANGE_TRACKING_START`, the request handling proceeds as follows:

If **AppendData** is `FALSE` and **LogFileNameLengthInBytes** is 0, the server MUST fail the request with `STATUS_INVALID_PARAMETER`.

The server MUST issue a start tracking request to the virtual SCSI disk in an implementation-specific manner.

The server MUST initialize the `SVHDX_TUNNEL_OPERATION_HEADER` as follows:

- The **OperationCode** field MUST be set to the **OperationCode** value of the request.
- The **Status** field MUST be set to the value received from the virtual SCSI disk.
- The **RequestId** field MUST be set to the value received in the request.

The response MUST be sent to the client.

### 3.2.5.5.13 Receiving a Change Tracking Stop Request

Note: All of the information in this section is subject to change because it applies to a preliminary product version, and thus may differ from the final version of the software when released. All behavior notes that pertain to the preliminary product version contain specific references to it as an aid to the reader.

When the server receives a request in which **OperationCode** is equal to `RSVD_TUNNEL_CHANGE_TRACKING_STOP`, the request handling proceeds as follows:

The server MUST issue a stop tracking request to the virtual SCSI disk in an implementation-specific manner.

The server MUST initialize the `SVHDX_TUNNEL_OPERATION_HEADER` as follows:

- The **OperationCode** field MUST be set to the `OperationCode` value of the request.
- The **Status** field MUST be set to the value received from the virtual SCSI disk.
- The **RequestId** field MUST be set to the value received in the request.

The response MUST be sent to the client.

### 3.2.5.5.14 Receiving a Query Virtual Disk changes request

Note: All of the information in this section is subject to change because it applies to a preliminary product version, and thus may differ from the final version of the software when released. All behavior notes that pertain to the preliminary product version contain specific references to it as an aid to the reader.

When the server receives a request with an **OperationCode** equal to **RSVD\_TUNNEL\_QUERY\_VIRTUAL\_DISK\_CHANGES**, the request handling proceeds as follows:

If the input buffer is less than (size of **SVHDX\_TUNNEL\_OPERATION\_HEADER** + size of **SVHDX\_TUNNEL\_QUERY\_VIRTUAL\_DISK\_CHANGES\_REQUEST**), the server MUST fail the request with **STATUS\_BUFFER\_TOO\_SMALL**.

If **SnapshotType** is not **SvhdxSnapshotTypeVM**, the server MUST fail the request with **STATUS\_INVALID\_PARAMETER**.

The server MUST search for a snapshot in **Open.SnapshotList** where **Snapshot.SnapshotId** is equal to **TargetSnapshotId**. If no matching entry is found, the server MUST fail the request and return an error in an implementation-specific manner.

The server MUST search for a snapshot in **Open.SnapshotList** where **Snapshot.SnapshotId** is equal to **LimitSnapshotId**. If no matching entry is found, the server MUST fail the request and return an error in an implementation-specific manner.

If **Snapshot.ChangeTracking**, identified using **TargetSnapshotId**, or **Snapshot.ChangeTracking**, identified using **LimitSnapshotId**, is **FALSE**, the server MUST fail the request and return an error in an implementation-specific manner.

The server MUST issue a get virtual disk changes request to the virtual SCSI disk in an implementation-specific manner.

The server MUST construct an **SVHDX\_TUNNEL\_OPERATION\_HEADER** structure as specified in section [2.2.4.11](#), with the following values:

- The **OperationCode** field MUST be set to the **OperationCode** value of the request.
- The **Status** field MUST be set to status returned by virtual SCSI disk.
- The **RequestId** field MUST be set to the value received in the request.

If the **Status** is not zero, the server MUST return **SVHDX\_TUNNEL\_OPERATION\_HEADER** to the client, and no further processing is done.

Otherwise the server MUST append an **SVHDX\_TUNNEL\_QUERY\_VIRTUAL\_DISK\_CHANGES\_REPLY** structure to the **SVHDX\_TUNNEL\_OPERATION\_HEADER** in response, as specified in section [2.2.4.38](#), with the following values:

- The **ProcessedByteLength** field MUST be set to the total byte length of the virtual disk region that was processed. This MUST be **ByteLength** from the **SVHDX\_TUNNEL\_QUERY\_VIRTUAL\_DISK\_CHANGES\_REQUEST** or a smaller value, if the provided buffer was not large enough to contain all the information that was available about the requested virtual disk region.
- The **RangeCount** field MUST be set to the number of changed regions in the virtual disk region that was processed. This is also equal to the number of entries in the **Ranges** field.
- The **Reserved** field MUST be set to zero.
- The **Ranges** field should be filled with an array of **SVHDX\_VIRTUAL\_DISK\_CHANGED\_RANGE** structures, each initialized as follows:
  - The **ByteOffset** field MUST be set to the byte offset indicating the beginning of the changed range.
  - The **ByteLength** field MUST be set to the byte length of the changed range.

- The **Reserved** field MUST be set to zero.

The server MUST send the response to the client.

### 3.2.5.6 Receiving a Query Shared Virtual Disk Support Request

Note: Some of the information in this section is subject to change because it applies to a preliminary product version, and thus may differ from the final version of the software when released. All behavior notes that pertain to the preliminary product version contain specific references to it in the Product Behavior appendix.

If **MaxOutputResponse** is less than 8 (size of `SVHDX_SHARED_VIRTUAL_DISK_SUPPORT_RESPONSE`), the server MUST fail the request with `STATUS_BUFFER_TOO_SMALL`.

If **IsSVHDXSupported** is TRUE, the server MUST set **SharedVirtualDiskSupport** to 1. Otherwise, the server SHOULD [<15>](#) set **SharedVirtualDiskSupport** to 0.

If **ServerServiceVersion** is equal to RSVD Protocol version 1(0x00000001), the server MUST set **SharedVirtualDiskSupport** to **SharedVirtualDisksSupported**. If **ServerServiceVersion** is equal to RSVD Protocol version 2(0x00000002), the server MUST set **SharedVirtualDiskSupport** to **SharedVirtualDiskCDPSnapshotsSupported**. Otherwise, the server MUST fail the request with `STATUS_INVALID_PARAMETER`.

The server MUST search the **OpenTable** where **Open.FileName** matches the file name.

If no **Open** is found, the server MUST set **SharedVirtualDiskHandleState** to **HandleStateNone**.

If any **Open** is found for which **Open.LocalOpen** matches the application-provided handle, the server MUST set **SharedVirtualDiskHandleState** to **HandleStateShared**.

Otherwise, the server MUST set **SharedVirtualDiskHandleState** to **HandleStateFileShared**.

The response MUST be sent to the client.

### 3.2.5.7 Receiving an Open Request with a Target Specifier

Note: All of the information in this section is subject to change because it applies to a preliminary product version, and thus may differ from the final version of the software when released. All behavior notes that pertain to the preliminary product version contain specific references to it as an aid to the reader.

The received buffer MUST be interpreted as the `FILE_FULL_EA_INFORMATION` structure specified in [\[MS-FSCC\]](#) section 2.4.15.

If **EaValueLength** is greater than or equal to 24, and **EaName** is equal to `"RSVD_TARGET_SPECIFIER_EA"`, the server MUST process as follows:

- The **EaValue** MUST be interpreted as the `RSVD_BLOCK_DEVICE_TARGET_SPECIFIER` structure specified in section [2.2.4.34](#).
- If **EaValue.RsvdBlockDeviceTargetNamespace** is not **SnapshotId**, the server MUST return `STATUS_INVALID_PARAMETER`.
- If **EaValue.TargetInformationSnapshot.SnapshotType** is not **SvhdxSnapshotTypeVM** or **SvhdxSnapshotTypeWriteable**, then the server MUST return `STATUS_INVALID_PARAMETER`.
- Otherwise, the server MUST look up an Open in **OpenTable** where **Open.VHDSSnapshotId** is equal to **EaValue.TargetInformationSnapshot.SnapshotID**. If an entry is found, the server MUST return `STATUS_SUCCESS`, and no further processing is specified. If an entry is not found,

the server MUST issue an Open on the VHD set file to the virtual SCSI disk in an implementation-specific manner. If the virtual SCSI disk indicates success, the server MUST initialize an **Open** object with the following:

- **Open.LocalOpen** is set to the **Open** of the object in the local resource received as part of the local create operation.
- **Open.FileName** MUST be set to the application-provided file name.
- **Open.SenseErrorDataList** MUST be set to empty.
- **Open.SenseErrorSequence** MUST be set to 0x00.
- **Open.CreateOptions** MUST be set to the **CreateOptions** received as part of the local create operation.
- **Open.IsVHDSet** MUST be set to TRUE.
- **Open.PendingDelete** MUST be set to FALSE.
- **Open.VHDSSnapshotId** MUST be set to **EaValue.TargetInformationSnapshot.SnapshotID**.
- The server MUST return the status returned by the virtual SCSI disk.

### 3.2.6 Timer Events

None.

### 3.2.7 Other Local Events

None.

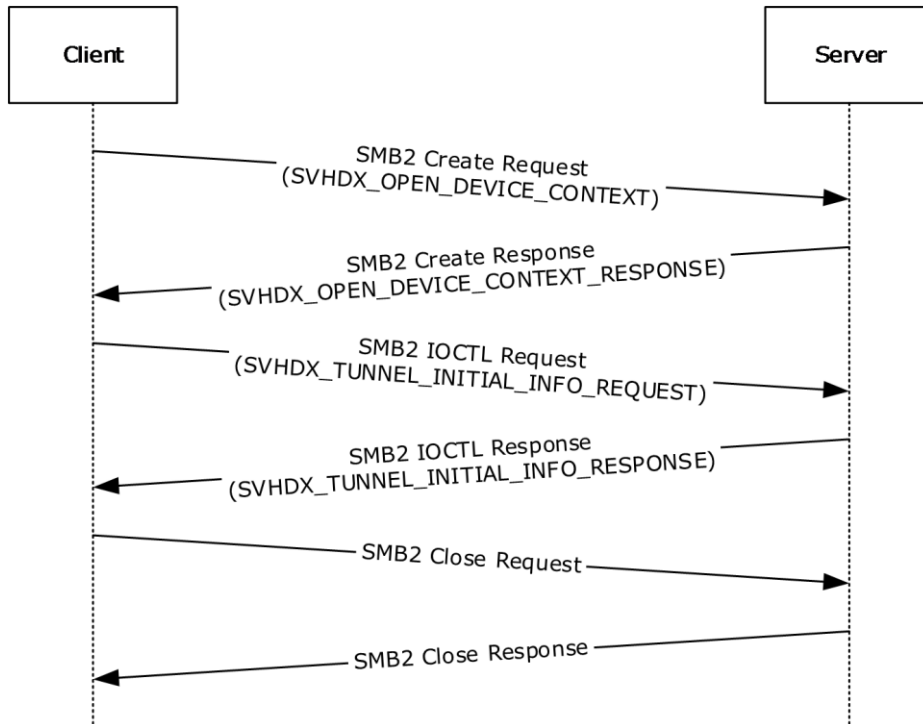


## 4 Protocol Examples

The following section describes common scenarios that indicate normal traffic flow in order to illustrate the function of the Remote Shared Virtual Disk (RSVD) Protocol.

### 4.1 Retrieving Virtual Disk File Information

The following diagram demonstrates the steps taken to open a shared virtual disk file, retrieve virtual disk file information, and close it.



**Figure 2: Retrieving virtual disk file information**

1. The client sends an SMB2 CREATE Request with the SVHDX\_OPEN\_DEVICE\_CONTEXT create context to open a shared virtual disk file.

```
Version: 1 (0x00000001)
HasInitiatorId: 1 (0x01)
Reserved: 0 (0x000000)
InitiatorId: (0x07770D201F2740834579D46F5AC43B73)
Flags: 0 (0x00000000)
OriginatorFlags: SVHDX_ORIGINATOR_PVHDPARSER (0x00000001)
OpenRequestId: (0x000000001EC7871E)
InitiatorHostNameLength: 16 (0x0010)
InitiatorHostName: client01 (0x0063006C00690065006E007400300031)
```

2. The server responds with an SMB2 CREATE Response giving the handle to the open identifying the shared virtual disk file and SVHDX\_OPEN\_DEVICE\_CONTEXT\_RESPONSE context.

```
Version: 1 (0x00000001)
HasInitiatorId: 1(0x01)
Reserved: 0 (0x000000)
InitiatorId: (0x07770D201F2740834579D46F5AC43B73)
```

```
Flags: 0 (0x00000000)
OriginatorFlags: SVHDX_ORIGINATOR_PVHDPARSER(0x00000001)
OpenRequestId: (0x000000001Ec7871E)
InitiatorHostNameLength: 16 (0x0010)
InitiatorHostName: client01 (0x0063006C00690065006E007400300031)
```

3. The client sends an SMB2 IOCTL Request with SVHDX\_TUNNEL\_INITIAL\_INFO\_REQUEST to retrieve the virtual disk information.

```
OperationCode: RSVD_TUNNEL_GET_INITIAL_INFO_OPERATION (0x02001001)
Status: 0 (0x00000000)
RequestId: (0x000000001Ec7871E)
```

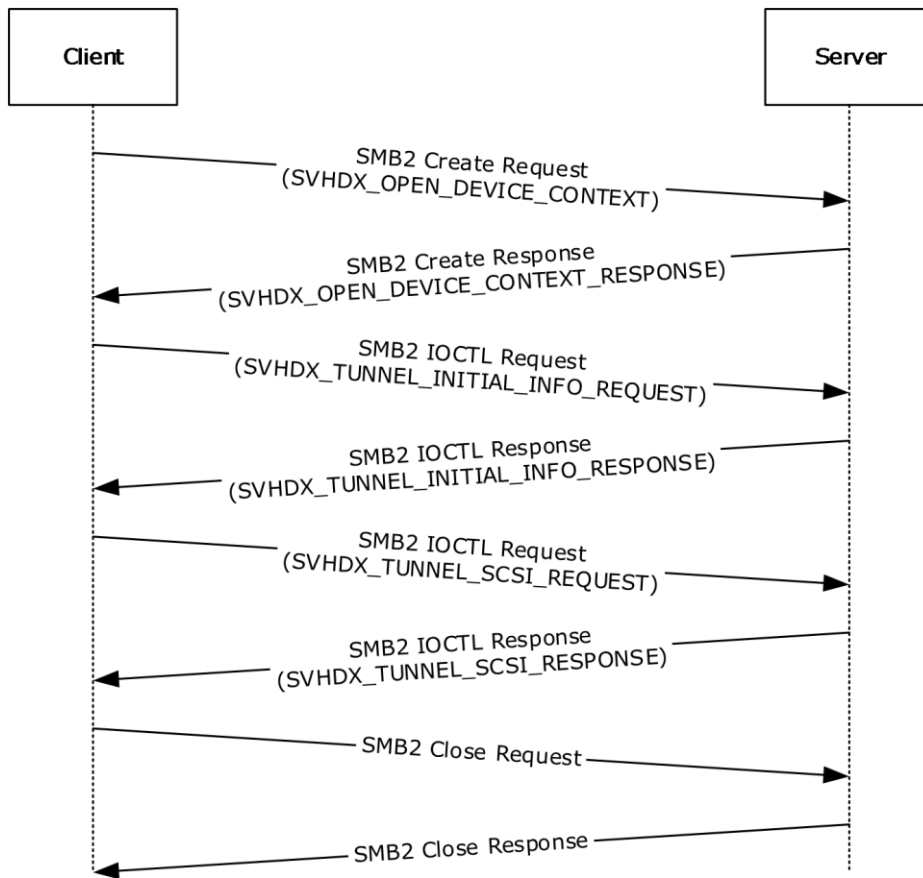
4. The server sends an SMB2 IOCTL Response with SVHDX\_TUNNEL\_INITIAL\_INFO\_RESPONSE containing the virtual disk information.

```
OperationCode: RSVD_TUNNEL_GET_INITIAL_INFO_OPERATION (0x02001001)
Status: 0 (0x00000000)
RequestId: (0x000000001Ec7871E)
ServerVersion: 1 (0x00000001)
SectorSize: 512 (0x00000200)
PhysicalSectorSize: 256 (0x00000100)
Reserved: 0 (0x00000000)
VirtualSize: (0x4000000000000000)
```

5. The client sends an SMB2 CLOSE Request to close the shared virtual disk file.
6. The server sends an SMB2 CLOSE Response indicating the close was successful.

## 4.2 Executing a SCSI Command

The following diagram demonstrates the steps taken to open a shared virtual disk file, execute a SCSI command, and close it.



**Figure 3: Executing a SCSI command**

1. The client sends an SMB2 CREATE Request with the SVHDX\_OPEN\_DEVICE\_CONTEXT create context to open a shared virtual disk file.

```

Version: 1(0x00000001)
HasInitiatorId: 1 (0x01)
Reserved: 0 (0x000000)
InitiatorId: (0x07770D201F2740834579D46F5AC43B73)
Flags: 0 (0x00000000)
OriginatorFlags: SVHDX_ORIGINATOR_PVHDPARSER (0x00000001)
OpenRequestId: (0x000000001EC7871E)
InitiatorHostNameLength: 16 (0x0010)
InitiatorHostName: client01 (0x0063006C00690065006E007400300031)
  
```

2. The server responds with an SMB2 CREATE Response giving the handle to the open identifying the shared virtual disk file and SVHDX\_OPEN\_DEVICE\_CONTEXT\_RESPONSE context.

```

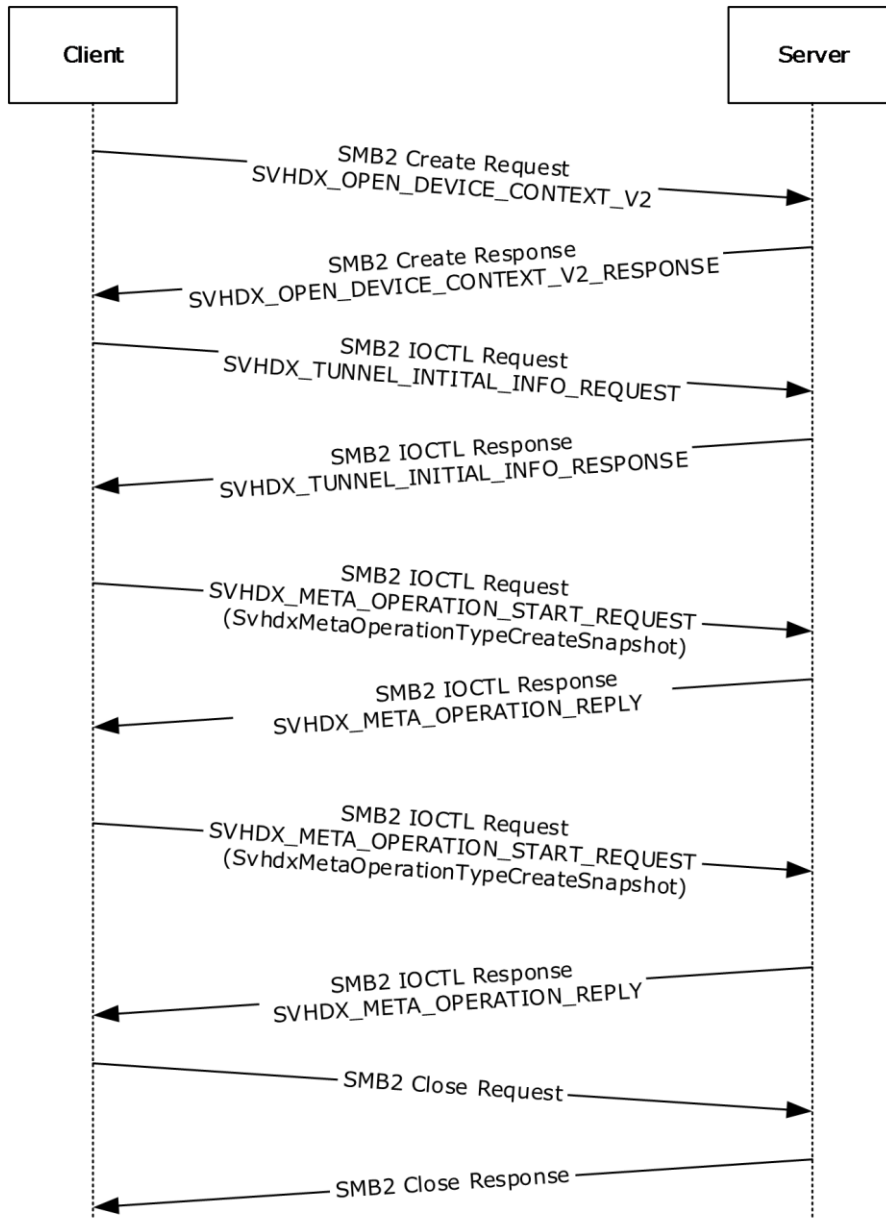
Version: 1(0x00000001)
HasInitiatorId: 1 (0x01)
Reserved: 0 (0x000000)
InitiatorId: (0x07770D201F2740834579D46F5AC43B73)
Flags: 0 (0x00000000)
OriginatorFlags: SVHDX_ORIGINATOR_PVHDPARSER (0x00000001)
OpenRequestId: (0x000000001EC7871E)
InitiatorHostNameLength: 16 (0x0010)
InitiatorHostName: client01 (0x0063006C00690065006E007400300031)
  
```



### 4.3 Creating a Virtual Machine Snapshot

Note: Some of the information in this section is subject to change because it applies to a preliminary product version, and thus may differ from the final version of the software when released. All behavior notes that pertain to the preliminary product version contain specific references to it in the Product Behavior appendix.

The following diagram demonstrates the steps taken to open a VHD Set, create a virtual machine snapshot, and close it.



**Figure 4: Creating a Virtual Machine Snapshot**

1. The client sends a SMB2 CREATE Request with the SVHDX\_OPEN\_DEVICE\_CONTEXT\_V2 create context to open a shared virtual disk file.

```
Version: 2 (0x00000002)
HasInitiatorId: 1
Reserved: 0 (0x000000)
InitiatorId: (68bad672-2a73-4cd8-9f58-6a4b67232e0d)
Flags: 0 (0x00000000)
OriginatorFlags: SVHDX ORIGINATOR PVHDPARSER(0x00000001)
OpenRequestId: (0x3028E5B600000000)
InitiatorHostNameLength: 20 (0x0014)
InitiatorHostName: SMBD-SUT01(0x0053004D00420044002D00530055005400300031)
VirtualDiskPropertiesInitialized: 0 (0x00000000)
ServerServiceVersion: 0 (0x00000000)
VirtualSectorSize: 0 (0x00000000)
PhysicalSectorSize: 0 (0x00000000)
VirtualSize: 0 (0x000000000000000000)
```

2. The server responds with an SMB2 CREATE Response giving the handle to the open identifying the shared virtual disk file and SVHDX\_OPEN\_DEVICE\_CONTEXT\_V2\_RESPONSE context.

```
Version: 2 (0x00000002)
HasInitiatorId: 1(0x01)
Reserved: 0 (0x000000)
InitiatorId: 68bad672-2a73-4cd8-9f58-6a4b67232e0d
Flags: 0 (0x00000000)
OriginatorFlags: SVHDX ORIGINATOR PVHDPARSER(0x00000001)
OpenRequestId: (0x3028E5B600000000)
InitiatorHostNameLength: 20 (0x0014)
InitiatorHostName: SMBD-SUT01(0x0053004D00420044002D00530055005400300031)
VirtualDiskPropertiesInitialized: 1 (0x00000001)
ServerServiceVersion: 2 (0x00000002)
VirtualSectorSize: 512 (0x00000200)
PhysicalSectorSize: 4096 (0x00001000)
VirtualSize: (0x400000000000000000)
```

3. The client sends an SMB2 IOCTL Request with SVHDX\_TUNNEL\_INITIAL\_INFO\_REQUEST to retrieve the virtual disk information.

```
OperationCode: RSVD_TUNNEL_GET_INITIAL_INFO_OPERATION (0x02001001)
Status: 0 (0x00000000)
RequestId: (0x3028E5B600000001)
```

4. The server sends an SMB2 IOCTL Response with SVHDX\_TUNNEL\_INITIAL\_INFO\_RESPONSE containing the virtual disk information.

```
OperationCode: RSVD_TUNNEL_GET_INITIAL_INFO_OPERATION (0x02001001)
Status: 0 (0x00000000)
RequestId: (0x3028E5B600000001)
ServerVersion: 2 (0x00000002)
SectorSize: 512 (0x00000200)
PhysicalSectorSize: 256 (0x00000100)
Reserved: 0 (0x00000000)
VirtualSize: (0x400000000000000000)
```

5. The client sends an SMB2 IOCTL Request with SVHDX\_META\_OPERATION\_START\_REQUEST to begin creation of a Virtual Machine snapshot.

```
SVHDX TUNNEL OPERATION HEADER:
OperationCode: RSVD_TUNNEL_META_OPERATION_START (0x02002101)
Status: 0 (0x00000000)
RequestId: (0x3028E5B600000002)
```

```
SVHDX_META_OPERATION_START_REQUEST:
TransactionId: 6abc134e-c798-11e4-aecf-0202c94fd1d1
OperationType: SvhdXMetaOperationTypeCreateSnapshot(0x00000001)
SVHDX_META_OPERATION_CREATE_SNAPSHOT:
Padding: 0 (0x00000000)
SnapshotType: SvhdXSnapshotTypeVM(0x00000001)
Flags: SVHDX_SNAPSHOT_DISK_FLAG_ENABLE_CHANGE_TRACKING (0x00000001)
Stage1: SvhdXSnapshotStageInitialize(0x00000001)
Stage2: SvhdXSnapshotStageInvalid (0x00000000)
Stage3: SvhdXSnapshotStageInvalid (0x00000000)
Stage4: SvhdXSnapshotStageInvalid (0x00000000)
Stage5: SvhdXSnapshotStageInvalid (0x00000000)
Stage6: SvhdXSnapshotStageInvalid (0x00000000)
SnapshotId: 5ac07013-edb8-4e2c-9784-6edd2843f269
ParametersPayloadSize: 0(0x00000000)
```

6. The server sends an SMB2 IOCTL Response with SVHDX\_META\_OPERATION\_REPLY containing status.

```
SVHDX_TUNNEL_OPERATION_HEADER:
OperationCode: RSVD_TUNNEL_META_OPERATION_START (0x02002101)
Status: 0 (0x00000000)
RequestId: (0x3028E5B600000002)
SVHDX_META_OPERATION_REPLY:
ChangeTrackingErrorStatus: 0 (0x00000000)
```

7. The client sends an SMB2 IOCTL Request with SVHDX\_META\_OPERATION\_START\_REQUEST to finalize creation of Virtual Machine snapshot.

```
SVHDX_TUNNEL_OPERATION_HEADER:
OperationCode: RSVD_TUNNEL_META_OPERATION_START (0x02002101)
Status: 0 (0x00000000)
RequestId: (0x3028E5B600000003)

SVHDX_META_OPERATION_START_REQUEST:
TransactionId: 6abc134e-c798-11e4-aecf-0202c94fd1d1
OperationType: SvhdXMetaOperationTypeCreateSnapshot(0x00000001)
SVHDX_META_OPERATION_CREATE_SNAPSHOT:
Padding: 0 (0x00000000)
SnapshotType: SvhdXSnapshotTypeVM(0x00000001)
Flags: 0 (0x00000000)
Stage1: SvhdXSnapshotStageBlockIO (0x00000002)
Stage2: SvhdXSnapshotStageSwitchObjectStore (0x00000003)
Stage3: SvhdXSnapshotStageUnblockIO (0x00000004)
Stage4: SvhdXSnapshotStageFinalize (0x00000005)
Stage5: SvhdXSnapshotStageInvalid (0x00000000)
Stage6: SvhdXSnapshotStageInvalid (0x00000000)
SnapshotId: 5ac07013-edb8-4e2c-9784-6edd2843f269
ParametersPayloadSize: 0(0x00000000)
```

8. The server sends an SMB2 IOCTL Response with SVHDX\_META\_OPERATION\_REPLY containing status.

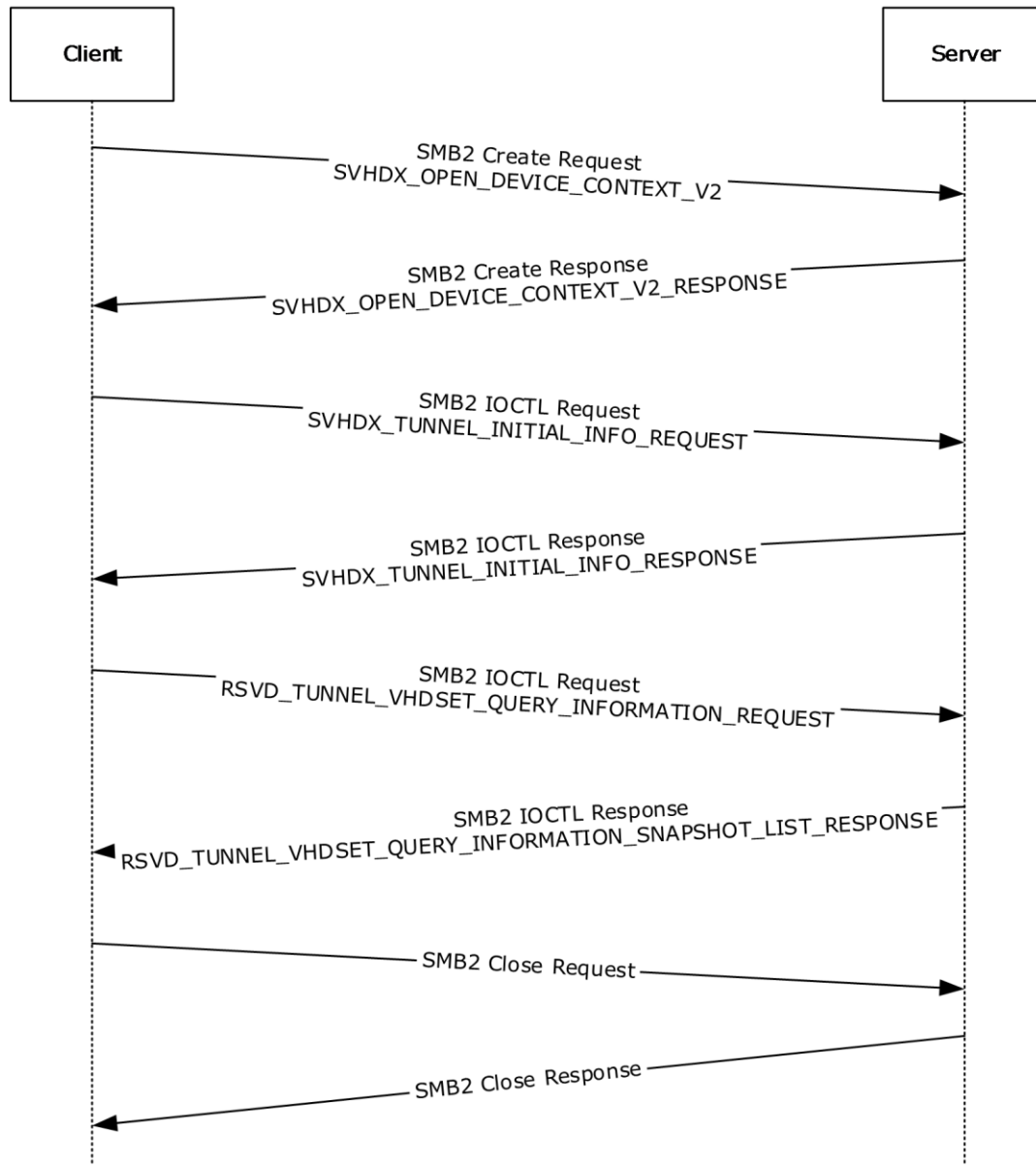
```
SVHDX_TUNNEL_OPERATION_HEADER:
OperationCode: RSVD_TUNNEL_META_OPERATION_START (0x02002101)
Status: 0 (0x00000000)
RequestId: (0x3028E5B600000003)
SVHDX_META_OPERATION_REPLY:
ChangeTrackingErrorStatus: 0 (0x00000000)
```

9. The client sends an SMB2 CLOSE Request to close the shared virtual disk file.
10. The server sends an SMB2 CLOSE Response indicating the close was successful.

#### 4.4 Retrieving a VHD Set Snapshot List

Note: Some of the information in this section is subject to change because it applies to a preliminary product version, and thus may differ from the final version of the software when released. All behavior notes that pertain to the preliminary product version contain specific references to it in the Product Behavior appendix.

The following diagram demonstrates the steps taken to open a VHD Set, retrieve snapshot IDs of the VHD Set, and close it.



**Figure 5: Retrieving VHD Set Information**



1. The client sends a SMB2 CREATE Request with the SVHDX\_OPEN\_DEVICE\_CONTEXT\_V2 create context to open a shared virtual disk file.

```
Version: 2 (0x00000002)
HasInitiatorId: 1
Reserved: 0 (0x000000)
InitiatorId: 68bad672-2a73-4cd8-9f58-6a4b67232e0d
Flags: 0 (0x00000000)
OriginatorFlags: SVHDX_ORIGINATOR_PVHDPARSER(0x00000001)
OpenRequestId: (0x550916A700000000)
InitiatorHostNameLength: 20 (0x0014)
InitiatorHostName: SMBD-SUT01(0x0053004D00420044002D00530055005400300031)
VirtualDiskPropertiesInitialized: 0 (0x00000000)
ServerServiceVersion: 0 (0x00000000)
VirtualSectorSize: 0 (0x00000000)
PhysicalSectorSize: 0 (0x00000000)
VirtualSize: 0 (0x0000000000000000)
```

2. The server responds with an SMB2 CREATE Response giving the handle to the open identifying the shared virtual disk file and SVHDX\_OPEN\_DEVICE\_CONTEXT\_V2\_Response context

```
Version: 2 (0x00000002)
HasInitiatorId: 1
Reserved: 0 (0x000000)
InitiatorId: 68bad672-2a73-4cd8-9f58-6a4b67232e0d
Flags: 0 (0x00000000)
OriginatorFlags: SVHDX_ORIGINATOR_PVHDPARSER(0x00000001)
OpenRequestId: (0x550916A700000000)
InitiatorHostNameLength: 20 (0x0014)
InitiatorHostName: SMBD-SUT01(0x0053004D00420044002D00530055005400300031)
VirtualDiskPropertiesInitialized: 1 (0x00000001)
ServerServiceVersion: 2 (0x00000002)
VirtualSectorSize: 512 (0x00000200)
PhysicalSectorSize: 4096 (0x00001000)
VirtualSize: (0x4000000000000000)
```

3. The client sends an SMB2 IOCTL Request with SVHDX\_TUNNEL\_INITIAL\_INFO\_REQUEST to retrieve the virtual disk information.

```
OperationCode: RSVD_TUNNEL_GET_INITIAL_INFO_OPERATION (0x02001001)
Status: 0 (0x00000000)
RequestId: (0x550916A700000001)
```

4. The server sends an SMB2 IOCTL Response with SVHDX\_TUNNEL\_INITIAL\_INFO\_RESPONSE containing the virtual disk information.

```
OperationCode: RSVD_TUNNEL_GET_INITIAL_INFO_OPERATION (0x02001001)
Status: 0 (0x00000000)
RequestId: (0x550916A700000001)
ServerVersion: 2 (0x00000002)
SectorSize: 512 (0x00000200)
PhysicalSectorSize: 256 (0x00000100)
Reserved: 0 (0x00000000)
VirtualSize: (0x4000000000000000)
```

5. The client sends an SMB2 IOCTL Request with RSVD\_TUNNEL\_VHDSET\_QUERY\_INFORMATION\_REQUEST to retrieve the list of snapshot IDs of the VHD Set.

```
SVHDX_TUNNEL_OPERATION_HEADER:  
OperationCode: RSVD_TUNNEL_VHDSET_QUERY_INFORMATION (0x02002005)  
Status: 0 (0x00000000)  
RequestId: (0x550916A700000002)
```

```
RSVD_TUNNEL_VHDSET_QUERY_INFORMATION_REQUEST:  
VHDSetInformationType: SvhdvVHDSetInformationTypeSnapshotList (0x00000002)  
SnapshotType: SvhdvSnapshotTypeVM (0x00000001)  
SnapshotId: 00000000-0000-0000-0000-000000000000
```

6. The server sends an SMB2 IOCTL Response with RSVD\_TUNNEL\_VHDSET\_QUERY\_INFORMATION\_SNAPSHOT\_LIST\_RESPONSE containing the list of snapshot IDs.

```
SVHDX_TUNNEL_OPERATION_HEADER:  
OperationCode: RSVD_TUNNEL_VHDSET_QUERY_INFORMATION (0x02002005)  
Status: 0 (0x00000000)  
RequestId: (0x550916A700000002)
```

```
RSVD_TUNNEL_VHDSET_QUERY_INFORMATION_SNAPSHOT_LIST_RESPONSE:  
VHDSetInformationType: SvhdvVHDSetInformationTypeSnapshotList (0x00000002)  
Padding: 1 (0x00000001)  
ResponseComplete: 0x01  
Reserved: 0 (0x00000000)  
NumberOfSnapshots: 2 (0x00000002)  
SnapshotIds: 4d051d8d-d120-4ec5-ba14-a2bc02219678, 71836f8b-210e-4896-aac6-  
1c4e3a8e81ef
```

7. The client sends an SMB2 CLOSE Request to close the shared virtual disk file.
8. The server sends an SMB2 CLOSE Response indicating the close was successful.

## **5 Security**

### **5.1 Security Considerations for Implementers**

None.

### **5.2 Index of Security Parameters**

None.

## 6 Appendix A: Product Behavior

The information in this specification is applicable to the following Microsoft products or supplemental software. References to product versions include released service packs.

Note: Some of the information in this section is subject to change because it applies to a preliminary product version, and thus may differ from the final version of the software when released. All behavior notes that pertain to the preliminary product version contain specific references to it as an aid to the reader.

- Windows Server 2012 R2 operating system
- Windows 8.1 operating system
- Windows 10 operating system
- Windows Server 2016 Technical Preview operating system

Exceptions, if any, are noted below. If a service pack or Quick Fix Engineering (QFE) number appears with the product version, behavior changed in that service pack or QFE. The new behavior also applies to subsequent service packs of the product unless otherwise specified. If a product edition appears with the product version, behavior is different in that product edition.

Unless otherwise specified, any statement of optional behavior in this specification that is prescribed using the terms SHOULD or SHOULD NOT implies product behavior in accordance with the SHOULD or SHOULD NOT prescription. Unless otherwise specified, the term MAY implies that the product does not follow the prescription.

<1> [Section 1.7](#): The following table illustrates Windows operating system versions that support RSVD clients and RSVD servers.

RSVD client	RSVD server
Windows 8.1 Windows Server 2012 R2 Windows 10 Windows Server 2016 Technical Preview	Windows Server 2012 R2 Windows Server 2016 Technical Preview

<2> [Section 3.1.3](#): Windows 8.1 and Windows Server 2012 R2 set **ClientServiceVersion** to RSVD Protocol version 1(0x00000001). Windows 10 and Windows Server 2016 Technical Preview set **ClientServiceVersion** to RSVD Protocol version 2(0x00000002).

<3> [Section 3.1.3](#): Windows-based RSVD clients initialize to zero.

<4> [Section 3.1.4.9](#): Microsoft Windows applications set unspecified bits in **SrbFlags** in addition to the specified bits in section [2.2.4.7](#). All bits set in **SrbFlags** are ignored for processing by Windows servers as specified in section [3.2.5.5.5](#).

<5> [Section 3.1.4.9](#): Windows-based RSVD clients set **DataIn** to 0x01 when **SrbFlags** includes both SRB\_FLAGS\_DATA\_IN and SRB\_FLAGS\_DATA\_OUT.

<6> [Section 3.2.3](#): Windows Server 2012 R2 sets **ServerServiceVersion** to RSVD Protocol version 1 (0x00000001). Windows Server 2016 Technical Preview sets **ServerServiceVersion** to RSVD Protocol version 2(0x00000002).

<7> [Section 3.2.5.1](#): When the shared virtual disk file does not previously exist, Windows Server 2012 R2 and Windows Server 2016 Technical Preview attempt to open with a create disposition which



## 7 Change Tracking

This section identifies changes that were made to this document since the last release. Changes are classified as New, Major, Minor, Editorial, or No change.

The revision class **New** means that a new document is being released.

The revision class **Major** means that the technical content in the document was significantly revised. Major changes affect protocol interoperability or implementation. Examples of major changes are:

- A document revision that incorporates changes to interoperability requirements or functionality.
- The removal of a document from the documentation set.

The revision class **Minor** means that the meaning of the technical content was clarified. Minor changes do not affect protocol interoperability or implementation. Examples of minor changes are updates to clarify ambiguity at the sentence, paragraph, or table level.

The revision class **Editorial** means that the formatting in the technical content was changed. Editorial changes apply to grammatical, formatting, and style issues.

The revision class **No change** means that no new technical changes were introduced. Minor editorial and formatting changes may have been made, but the technical content of the document is identical to the last released version.

Major and minor changes can be described further using the following change types:

- New content added.
- Content updated.
- Content removed.
- New product behavior note added.
- Product behavior note updated.
- Product behavior note removed.
- New protocol syntax added.
- Protocol syntax updated.
- Protocol syntax removed.
- New content added due to protocol revision.
- Content updated due to protocol revision.
- Content removed due to protocol revision.
- New protocol syntax added due to protocol revision.
- Protocol syntax updated due to protocol revision.
- Protocol syntax removed due to protocol revision.
- Obsolete document removed.

Editorial changes are always classified with the change type **Editorially updated**.

Some important terms used in the change type descriptions are defined as follows:

- **Protocol syntax** refers to data elements (such as packets, structures, enumerations, and methods) as well as interfaces.
- **Protocol revision** refers to changes made to a protocol that affect the bits that are sent over the wire.

The changes made to this document are listed in the following table. For more information, please contact [dochelp@microsoft.com](mailto:dochelp@microsoft.com).

Section	Tracking number (if applicable) and description	Major change (Y or N)	Change type
<a href="#">2.2.2</a> Operation Codes	Updated for Windows 10 and Windows Server 2016 Technical Preview.	Y	Content update.
<a href="#">2.2.4.16</a> SVHDX_SHARED_VIRTUAL_DISK_SUPPORT_RESPONSE Structure	72733 : Updated the values for the SharedVirtualDiskSupport field.	Y	Content update.
<a href="#">2.2.4.17</a> SVHDX_META_OPERATION_START_REQUEST Structure	Updated for Windows 10 and Windows Server 2016 Technical Preview.	Y	Content update.
<a href="#">2.2.4.34</a> RSVD_BLOCK_DEVICE_TARGET_SPECIFIER Structure	Added section with content for Windows 10 and Windows Server 2016 Technical Preview.	Y	New content added.
<a href="#">2.2.4.35</a> RSVD_BLOCK_DEVICE_TARGET_SPECIFIER_SNAPS_HOT Structure	Added section with content for Windows 10 and Windows Server 2016 Technical Preview.	Y	New content added.
<a href="#">2.2.4.36</a> SVHDX_APPLY_SNAPSHOT_PARAMS Structure	Added section with content for Windows 10 and Windows Server 2016 Technical Preview.	Y	New content added.
<a href="#">2.2.4.37</a> SVHDX_TUNNEL_QUERY_VIRTUAL_DISK_CHANGES_REQUEST Structure	Added section with content for Windows 10 and Windows Server 2016 Technical Preview.	Y	New content added.
<a href="#">2.2.4.38</a> SVHDX_TUNNEL_QUERY_VIRTUAL_DISK_CHANGES_REPLY Structure	Added section with content for Windows 10 and Windows Server 2016 Technical Preview.	Y	New content added.
<a href="#">2.2.4.39</a> SVHDX_VIRTUAL_DISK_CHANGED_RANGE Structure	Added section with content for Windows 10 and Windows Server 2016 Technical Preview.	Y	New content added.
<a href="#">2.2.6</a> Snapshot Types	Updated for Windows 10 and Windows Server 2016 Technical Preview.	Y	Content update.

Section	Tracking number (if applicable) and description	Major change (Y or N)	Change type
<a href="#">3.1.4.24</a> Application Requests Opening a Shared VHD Set using a Target Specifier	Added section with content for Windows 10 and Windows Server 2016 Technical Preview.	Y	New content added.
<a href="#">3.1.4.25</a> Application Requests to Apply Snapshot	Added section with content for Windows 10 and Windows Server 2016 Technical Preview.	Y	New content added.
<a href="#">3.1.4.26</a> Application Requests Querying List of Changed Ranges	Added section with content for Windows 10 and Windows Server 2016 Technical Preview.	Y	New content added.
<a href="#">3.2.1.2</a> Per Open	Updated for Windows 10 and Windows Server 2016 Technical Preview.	Y	Content update.
<a href="#">3.2.1.4</a> Per Snapshot	Added section with content for Windows 10 and Windows Server 2016 Technical Preview.	Y	New content added.
<a href="#">3.2.5.1</a> Receiving an Open Request	72740 : Updated the processing rules when the request is failed with STATUS_VHD_SHARED.	Y	Content update.
<a href="#">3.2.5.5.7</a> Receiving a Start Meta-Operation Request	Added content for Windows Server 2016 Technical Preview.	Y	Content update.
<a href="#">3.2.5.5.7.1</a> Receiving a Create Snapshot Request	Added content for Windows Server 2016 Technical Preview.	Y	Content update.
<a href="#">3.2.5.5.7.6</a> Receiving an Apply Snapshot Request	Added section with content for Windows Server 2016 Technical Preview.	Y	New content added.
<a href="#">3.2.5.5.9</a> Receiving a Query VHD Set Information Request	Added content for Windows Server 2016 Technical Preview.	Y	Content update.
<a href="#">3.2.5.5.14</a> Receiving a Query Virtual Disk changes request	Added for Windows 10 and Windows Server 2016 Technical Preview.	Y	New content added.
<a href="#">3.2.5.6</a> Receiving a Query Shared Virtual Disk Support Request	72733 : Clarified the settings when the server must set SharedVirtualDiskSupport to SharedVirtualDiskCDPSnapshotsSu	Y	Content update.



Section	Tracking number (if applicable) and description	Major change (Y or N)	Change type
	pported.		
<a href="#">3.2.5.7</a> Receiving an Open Request with a Target Specifier	Added section with content for Windows Server 2016 Technical Preview.	Y	New content added.

## 8 Index

### A

[Applicability](#) 9

### C

[Capability negotiation](#) 9

[Change tracking](#) 102

Client

[initialization](#) 46

[other local events](#) 65

[timer events](#) 65

[timers](#) 46

[Constants message](#) 11

### E

[Error Code message](#) 12

### F

[Fields - vendor-extensible](#) 10

### G

[Glossary](#) 7

### I

[Implementer - security considerations](#) 99

[Index of security parameters](#) 99

[Informative references](#) 8

Initialization

[client](#) 46

[server](#) 67

[Introduction](#) 7

### M

Message processing

[server](#) 67

Messages

[Constants](#) 11

[Error Code](#) 12

[Error Code message](#) 12

[Operation Codes](#) 11

[Operation Codes message](#) 11

[Snapshot Types](#) 45

[SRB Status Code](#) 45

[SRB Status Code message](#) 45

[transport](#) 11

### N

[Normative references](#) 8

### O

[Operation Codes message](#) 11

Other local events

[client](#) 65

[server](#) 88

[Overview \(synopsis\)](#) 8

### P

[Parameters - security index](#) 99

[Preconditions](#) 9

[Prerequisites](#) 9

[Product behavior](#) 100

### R

[References](#) 7

[informative](#) 8

[normative](#) 8

[Relationship to other protocols](#) 8

### S

Security

[implementer considerations](#) 99

[parameter index](#) 99

Sequencing rules

[server](#) 67

Server

[initialization](#) 67

[message processing](#) 67

[other local events](#) 88

[sequencing rules](#) 67

[timer events](#) 88

[timers](#) 67

[Snapshot Types message](#) 45

[SRB Status Code message](#) 45

[Standards assignments](#) 10

### T

Timer events

[client](#) 65

[server](#) 88

Timers

[client](#) 46

[server](#) 67

[Tracking changes](#) 102

[Transport](#) 11

### V

[Vendor-extensible fields](#) 10

[Versioning](#) 9