

[MS-RDPESC]:

Remote Desktop Protocol: Smart Card Virtual Channel Extension

Intellectual Property Rights Notice for Open Specifications Documentation

- **Technical Documentation.** Microsoft publishes Open Specifications documentation (“this documentation”) for protocols, file formats, data portability, computer languages, and standards support. Additionally, overview documents cover inter-protocol relationships and interactions.
- **Copyrights.** This documentation is covered by Microsoft copyrights. Regardless of any other terms that are contained in the terms of use for the Microsoft website that hosts this documentation, you can make copies of it in order to develop implementations of the technologies that are described in this documentation and can distribute portions of it in your implementations that use these technologies or in your documentation as necessary to properly document the implementation. You can also distribute in your implementation, with or without modification, any schemas, IDLs, or code samples that are included in the documentation. This permission also applies to any documents that are referenced in the Open Specifications documentation.
- **No Trade Secrets.** Microsoft does not claim any trade secret rights in this documentation.
- **Patents.** Microsoft has patents that might cover your implementations of the technologies described in the Open Specifications documentation. Neither this notice nor Microsoft's delivery of this documentation grants any licenses under those patents or any other Microsoft patents. However, a given Open Specifications document might be covered by the Microsoft [Open Specifications Promise](#) or the [Microsoft Community Promise](#). If you would prefer a written license, or if the technologies described in this documentation are not covered by the Open Specifications Promise or Community Promise, as applicable, patent licenses are available by contacting iplg@microsoft.com.
- **License Programs.** To see all of the protocols in scope under a specific license program and the associated patents, visit the [Patent Map](#).
- **Trademarks.** The names of companies and products contained in this documentation might be covered by trademarks or similar intellectual property rights. This notice does not grant any licenses under those rights. For a list of Microsoft trademarks, visit www.microsoft.com/trademarks.
- **Fictitious Names.** The example companies, organizations, products, domain names, email addresses, logos, people, places, and events that are depicted in this documentation are fictitious. No association with any real company, organization, product, domain name, email address, logo, person, place, or event is intended or should be inferred.

Reservation of Rights. All other rights are reserved, and this notice does not grant any rights other than as specifically described above, whether by implication, estoppel, or otherwise.

Tools. The Open Specifications documentation does not require the use of Microsoft programming tools or programming environments in order for you to develop an implementation. If you have access to Microsoft programming tools and environments, you are free to take advantage of them. Certain Open Specifications documents are intended for use in conjunction with publicly available standards specifications and network programming art and, as such, assume that the reader either is familiar with the aforementioned material or has immediate access to it.

Support. For questions and support, please contact dochelp@microsoft.com.

Revision Summary

Date	Revision History	Revision Class	Comments
6/1/2007	1.0	Major	Updated and revised the technical content.
7/3/2007	1.0.1	Editorial	Changed language and formatting in the technical content.
7/20/2007	1.0.2	Editorial	Changed language and formatting in the technical content.
8/10/2007	1.0.3	Editorial	Changed language and formatting in the technical content.
9/28/2007	1.0.4	Editorial	Changed language and formatting in the technical content.
10/23/2007	1.0.5	Editorial	Changed language and formatting in the technical content.
11/30/2007	2.0	Major	Normative reference.
1/25/2008	2.0.1	Editorial	Changed language and formatting in the technical content.
3/14/2008	2.0.2	Editorial	Changed language and formatting in the technical content.
5/16/2008	2.0.3	Editorial	Changed language and formatting in the technical content.
6/20/2008	2.0.4	Editorial	Changed language and formatting in the technical content.
7/25/2008	2.0.5	Editorial	Changed language and formatting in the technical content.
8/29/2008	2.0.6	Editorial	Changed language and formatting in the technical content.
10/24/2008	2.0.7	Editorial	Changed language and formatting in the technical content.
12/5/2008	3.0	Major	Updated and revised the technical content.
1/16/2009	3.0.1	Editorial	Changed language and formatting in the technical content.
2/27/2009	3.0.2	Editorial	Changed language and formatting in the technical content.
4/10/2009	3.0.3	Editorial	Changed language and formatting in the technical content.
5/22/2009	4.0	Major	Updated and revised the technical content.
7/2/2009	4.0.1	Editorial	Changed language and formatting in the technical content.
8/14/2009	4.0.2	Editorial	Changed language and formatting in the technical content.
9/25/2009	4.1	Minor	Clarified the meaning of the technical content.
11/6/2009	4.1.1	Editorial	Changed language and formatting in the technical content.
12/18/2009	5.0	Major	Updated and revised the technical content.
1/29/2010	5.1	Minor	Clarified the meaning of the technical content.
3/12/2010	6.0	Major	Updated and revised the technical content.
4/23/2010	7.0	Major	Updated and revised the technical content.
6/4/2010	8.0	Major	Updated and revised the technical content.
7/16/2010	8.0	None	No changes to the meaning, language, or formatting of the technical content.
8/27/2010	8.0	None	No changes to the meaning, language, or formatting of the

Date	Revision History	Revision Class	Comments
			technical content.
10/8/2010	8.0	None	No changes to the meaning, language, or formatting of the technical content.
11/19/2010	8.0	None	No changes to the meaning, language, or formatting of the technical content.
1/7/2011	8.0	None	No changes to the meaning, language, or formatting of the technical content.
2/11/2011	8.0	None	No changes to the meaning, language, or formatting of the technical content.
3/25/2011	8.0	None	No changes to the meaning, language, or formatting of the technical content.
5/6/2011	8.0	None	No changes to the meaning, language, or formatting of the technical content.
6/17/2011	8.1	Minor	Clarified the meaning of the technical content.
9/23/2011	8.1	None	No changes to the meaning, language, or formatting of the technical content.
12/16/2011	9.0	Major	Updated and revised the technical content.
3/30/2012	9.0	None	No changes to the meaning, language, or formatting of the technical content.
7/12/2012	9.0	None	No changes to the meaning, language, or formatting of the technical content.
10/25/2012	9.0	None	No changes to the meaning, language, or formatting of the technical content.
1/31/2013	9.0	None	No changes to the meaning, language, or formatting of the technical content.
8/8/2013	10.0	Major	Updated and revised the technical content.
11/14/2013	10.0	None	No changes to the meaning, language, or formatting of the technical content.
2/13/2014	10.0	None	No changes to the meaning, language, or formatting of the technical content.
5/15/2014	10.0	None	No changes to the meaning, language, or formatting of the technical content.
6/30/2015	11.0	Major	Significantly changed the technical content.
10/16/2015	11.0	None	No changes to the meaning, language, or formatting of the technical content.
7/14/2016	11.0.1	Editorial	Changed language and formatting in the technical content.
6/1/2017	12.0	Major	Significantly changed the technical content.
9/15/2017	13.0	Major	Significantly changed the technical content.
12/1/2017	13.0	None	No changes to the meaning, language, or formatting of the

Date	Revision History	Revision Class	Comments
			technical content.
9/12/2018	14.0	Major	Significantly changed the technical content.
4/7/2021	15.0	Major	Significantly changed the technical content.

Table of Contents

1	Introduction	10
1.1	Glossary	10
1.2	References	12
1.2.1	Normative References	12
1.2.2	Informative References	13
1.3	Overview	13
1.4	Relationship to Other Protocols	15
1.5	Prerequisites/Preconditions	15
1.6	Applicability Statement	16
1.7	Versioning and Capability Negotiation	16
1.8	Vendor-Extensible Fields	16
1.9	Standards Assignments.....	16
2	Messages.....	18
2.1	Transport	18
2.2	Common Data Types	18
2.2.1	Common Structures	18
2.2.1.1	REDIR_SCARDCONTEXT.....	18
2.2.1.2	REDIR_SCARDHANDLE	18
2.2.1.3	Connect_Common.....	19
2.2.1.4	LocateCards_ATRMask.....	19
2.2.1.5	ReaderState_Common_Call	19
2.2.1.6	ReaderStateA	20
2.2.1.7	ReaderStateW	20
2.2.1.8	SCardIO_Request	20
2.2.1.9	ReadCache_Common.....	21
2.2.1.10	WriteCache_Common	21
2.2.1.11	ReaderState_Return	21
2.2.2	TS Server-Generated Structures	22
2.2.2.1	EstablishContext_Call	22
2.2.2.2	Context_Call.....	22
2.2.2.3	ListReaderGroups_Call.....	23
2.2.2.4	ListReaders_Call	23
2.2.2.5	ContextAndStringA_Call	24
2.2.2.6	ContextAndStringW_Call	24
2.2.2.7	ContextAndTwoStringA_Call	25
2.2.2.8	ContextAndTwoStringW_Call	26
2.2.2.9	LocateCardsA_Call	26
2.2.2.10	LocateCardsW_Call.....	27
2.2.2.11	GetStatusChangeA_Call	27
2.2.2.12	GetStatusChangeW_Call	28
2.2.2.13	ConnectA_Call	28
2.2.2.14	ConnectW_Call	28
2.2.2.15	Reconnect_Call	28
2.2.2.16	HCardAndDisposition_Call	29
2.2.2.17	State_Call	30
2.2.2.18	Status_Call	30
2.2.2.19	Transmit_Call	31
2.2.2.20	Control_Call	32
2.2.2.21	GetAttrib_Call.....	32
2.2.2.22	SetAttrib_Call	33
2.2.2.23	LocateCardsByATRA_Call	33
2.2.2.24	LocateCardsByATRW_Call	34
2.2.2.25	ReadCacheA_Call	34
2.2.2.26	ReadCacheW_Call	34

2.2.2.27	WriteCacheA_Call.....	35
2.2.2.28	WriteCacheW_Call.....	35
2.2.2.29	GetTransmitCount_Call.....	35
2.2.2.30	ScardAccessStartedEvent_Call.....	35
2.2.2.31	GetReaderIcon_Call.....	36
2.2.2.32	GetDeviceTypeId_Call.....	36
2.2.3	TS Client-Generated Structures.....	36
2.2.3.1	ReadCache_Return.....	36
2.2.3.2	EstablishContext_Return.....	37
2.2.3.3	Long_Return.....	37
2.2.3.4	ListReaderGroups_Return and ListReaders_Return.....	37
2.2.3.5	LocateCards_Return and GetStatusChange_Return.....	38
2.2.3.6	Control_Return.....	38
2.2.3.7	Reconnect_Return.....	38
2.2.3.8	Connect_Return.....	39
2.2.3.9	State_Return.....	39
2.2.3.10	Status_Return.....	39
2.2.3.11	Transmit_Return.....	40
2.2.3.12	GetAttrib_Return.....	41
2.2.3.13	GetTransmitCount_Return.....	41
2.2.3.14	GetReaderIcon_Return.....	41
2.2.3.15	GetDeviceTypeId_Return.....	42
2.2.4	Card/Reader State.....	42
2.2.5	Protocol Identifier.....	42
2.2.6	Access Mode Flags.....	43
2.2.7	Reader State.....	44
2.2.8	Return Code.....	45
3	Protocol Details.....	50
3.1	Protocol Server Details.....	50
3.1.1	Abstract Data Model.....	50
3.1.2	Timers.....	50
3.1.3	Initialization.....	50
3.1.4	Message Processing Events and Sequencing Rules.....	50
3.1.4.1	SCARD_IOCTL_ESTABLISHCONTEXT (IOCTL 0x00090014).....	54
3.1.4.2	SCARD_IOCTL_RELEASECONTEXT (IOCTL 0x00090018).....	54
3.1.4.3	SCARD_IOCTL_ISVALIDCONTEXT (IOCTL 0x0009001C).....	54
3.1.4.4	SCARD_IOCTL_ACCESSSTARTEDEVENT (IOCTL 0x000900E0).....	54
3.1.4.5	SCARD_IOCTL_LISTREADERGROUPSA (IOCTL 0x00090020).....	55
3.1.4.6	SCARD_IOCTL_LISTREADERGROUPSW (IOCTL 0x00090024).....	55
3.1.4.7	SCARD_IOCTL_LISTREADERSA (IOCTL 0x00090028).....	55
3.1.4.8	SCARD_IOCTL_LISTREADERSW (IOCTL 0x0009002C).....	55
3.1.4.9	SCARD_IOCTL_INTRODUCEREADERGROUPA (IOCTL 0x00090050).....	55
3.1.4.10	SCARD_IOCTL_INTRODUCEREADERGROUPW (IOCTL 0x00090054).....	56
3.1.4.11	SCARD_IOCTL_FORGETREADERGROUPA (IOCTL 0x00090058).....	56
3.1.4.12	SCARD_IOCTL_FORGETREADERGROUPW (IOCTL 0x0009005C).....	56
3.1.4.13	SCARD_IOCTL_INTRODUCEREADERA (IOCTL 0x00090060).....	56
3.1.4.14	SCARD_IOCTL_INTRODUCEREADERW (IOCTL 0x00090064).....	56
3.1.4.15	SCARD_IOCTL_FORGETREADERA (IOCTL 0x00090068).....	56
3.1.4.16	SCARD_IOCTL_FORGETREADERW (IOCTL 0x0009006C).....	57
3.1.4.17	SCARD_IOCTL_ADDREADERTOGROUPA (IOCTL 0x00090070).....	57
3.1.4.18	SCARD_IOCTL_ADDREADERTOGROUPW (IOCTL 0x00090074).....	57
3.1.4.19	SCARD_IOCTL_REMOVEREADERFROMGROUPA (IOCTL 0x00090078).....	57
3.1.4.20	SCARD_IOCTL_REMOVEREADERFROMGROUPW (IOCTL 0x0009007C).....	57
3.1.4.21	SCARD_IOCTL_LOCATECARDSA (IOCTL 0x00090098).....	57
3.1.4.22	SCARD_IOCTL_LOCATECARDSW (IOCTL 0x0009009C).....	58
3.1.4.23	SCARD_IOCTL_GETSTATUSCHANGEA (IOCTL 0x000900A0).....	58
3.1.4.24	SCARD_IOCTL_GETSTATUSCHANGEW (IOCTL 0x000900A4).....	58

3.1.4.25	SCARD_IOCTL_LOCATECARDSBYATRA (IOCTL 0x000900E8)	58
3.1.4.26	SCARD_IOCTL_LOCATECARDSBYATRW (IOCTL 0x000900EC)	58
3.1.4.27	SCARD_IOCTL_CANCEL (IOCTL 0x000900A8)	59
3.1.4.28	SCARD_IOCTL_CONNECTA (IOCTL 0x000900AC)	59
3.1.4.29	SCARD_IOCTL_CONNECTW (IOCTL 0x000900B0)	59
3.1.4.30	SCARD_IOCTL_DISCONNECT (IOCTL 0x000900B8)	59
3.1.4.31	SCARD_IOCTL_BEGINTRANSACTION (IOCTL 0x000900BC)	59
3.1.4.32	SCARD_IOCTL_ENDTRANSACTION (IOCTL 0x000900C0)	59
3.1.4.33	SCARD_IOCTL_STATUSA (IOCTL 0x000900C8)	60
3.1.4.34	SCARD_IOCTL_STATUSW (IOCTL 0x000900CC)	60
3.1.4.35	SCARD_IOCTL_TRANSMIT (IOCTL 0x000900D0)	60
3.1.4.36	SCARD_IOCTL_RECONNECT (IOCTL 0x000900B4)	60
3.1.4.37	SCARD_IOCTL_CONTROL (IOCTL 0x000900D4)	60
3.1.4.38	SCARD_IOCTL_GETATTRIB (IOCTL 0x000900D8)	60
3.1.4.39	SCARD_IOCTL_SETATTRIB (IOCTL 0x000900DC)	61
3.1.4.40	SCARD_IOCTL_STATE (IOCTL 0x000900C4)	61
3.1.4.41	SCARD_IOCTL_GETTRANSMITCOUNT (IOCTL 0x00090100)	61
3.1.4.42	SCARD_IOCTL_READCACHEA (IOCTL 0x000900F0)	61
3.1.4.43	SCARD_IOCTL_READCACHEW (IOCTL 0x000900F4)	61
3.1.4.44	SCARD_IOCTL_WRITECACHEA (IOCTL 0x000900F8)	62
3.1.4.45	SCARD_IOCTL_WRITECACHEW (IOCTL 0x000900FC)	62
3.1.4.46	SCARD_IOCTL_RELEASETARTEDEVENT	62
3.1.4.47	SCARD_IOCTL_GETREADERICON (IOCTL 0x00090104)	62
3.1.4.48	SCARD_IOCTL_GETDEVICETYPEID (IOCTL 0x00090108)	62
3.1.5	Timer Events	62
3.1.6	Other Local Events	62
3.2	Protocol Client Details	63
3.2.1	Abstract Data Model	63
3.2.2	Timers	63
3.2.3	Initialization	63
3.2.4	Higher-Layer Triggered Events	63
3.2.5	Message Processing Events and Sequencing Rules	63
3.2.5.1	Sending Outgoing Messages	63
3.2.5.2	Processing Incoming Replies	63
3.2.5.3	Messages	64
3.2.5.3.1	Sending EstablishContext Message	64
3.2.5.3.2	Processing EstablishContext Reply	64
3.2.5.3.3	Sending ReleaseContext Message	64
3.2.5.3.4	Processing ReleaseContext Reply	64
3.2.5.3.5	Sending IntroduceReader (ASCII) Message	64
3.2.5.3.6	Processing IntroduceReader (ASCII) Reply	64
3.2.5.3.7	Sending IntroduceReader (Unicode) Message	64
3.2.5.3.8	Processing IntroduceReader (Unicode) Reply	64
3.2.5.3.9	Sending ForgetReader (ASCII) Message	64
3.2.5.3.10	Processing ForgetReader (ASCII) Reply	64
3.2.5.3.11	Sending ForgetReader (Unicode) Message	65
3.2.5.3.12	Processing ForgetReader (Unicode) Reply	65
3.2.5.3.13	Sending IntroduceReaderGroup (ASCII) Message	65
3.2.5.3.14	Processing IntroduceReaderGroup (ASCII) Reply	65
3.2.5.3.15	Sending IntroduceReaderGroup (Unicode) Message	65
3.2.5.3.16	Processing IntroduceReaderGroup (Unicode) Reply	65
3.2.5.3.17	Sending ForgetReaderGroup (ASCII) Message 1	65
3.2.5.3.18	Processing ForgetReaderGroup (ASCII) Reply	65
3.2.5.3.19	Sending ForgetReaderGroup (ASCII) Message 2	65
3.2.5.3.20	Processing ForgetReaderGroup (Unicode) Reply	65
3.2.5.3.21	Sending AddReaderToGroup (ASCII) Message	65
3.2.5.3.22	Processing AddReaderToGroup (ASCII) Reply	66
3.2.5.3.23	Sending AddReaderToGroup (Unicode) Message	66

3.2.5.3.24	Processing AddReaderToGroup (Unicode) Reply.....	66
3.2.5.3.25	Sending RemoveReaderFromGroup (ASCII) Message	66
3.2.5.3.26	Processing RemoveReaderFromGroup (ASCII) Reply	66
3.2.5.3.27	Sending RemoveReaderFromGroup (Unicode) Message	66
3.2.5.3.28	Processing RemoveReaderFromGroup (Unicode) Reply	66
3.2.5.3.29	Sending ListReaderGroups (ASCII) Message	66
3.2.5.3.30	Processing ListReaderGroups (ASCII) Reply	66
3.2.5.3.31	Sending ListReaderGroups (Unicode) Message	66
3.2.5.3.32	Processing ListReaderGroups (Unicode) Reply	66
3.2.5.3.33	Sending ListReaders (ASCII) Message	67
3.2.5.3.34	Processing ListReadersReply (ASCII) Reply	67
3.2.5.3.35	Sending ListReaders (Unicode) Message	67
3.2.5.3.36	Processing ListReadersReply (Unicode) Reply	67
3.2.5.3.37	Sending LocateCards (ASCII) Message	67
3.2.5.3.38	Processing LocateCards (ASCII) Reply.....	67
3.2.5.3.39	Sending LocateCards (Unicode) Message	67
3.2.5.3.40	Processing LocateCards (Unicode) Reply.....	67
3.2.5.3.41	Sending GetStatusChange (ASCII) Message.....	67
3.2.5.3.42	Processing GetStatusChange (ASCII) Reply	67
3.2.5.3.43	Sending GetStatusChange (Unicode) Message.....	67
3.2.5.3.44	Processing GetStatusChange (Unicode) Reply	68
3.2.5.3.45	Sending Cancel Message	68
3.2.5.3.46	Processing Cancel Reply	68
3.2.5.3.47	Sending Connect (ASCII) Message.....	68
3.2.5.3.48	Processing Connect (ASCII) Reply	68
3.2.5.3.49	Sending Connect (Unicode) Message.....	68
3.2.5.3.50	Processing Connect (Unicode) Reply	68
3.2.5.3.51	Sending Reconnect Message	68
3.2.5.3.52	Processing Reconnect Reply	68
3.2.5.3.53	Sending Disconnect Message	68
3.2.5.3.54	Processing Disconnect Reply	68
3.2.5.3.55	Sending Status (ASCII) Message	69
3.2.5.3.56	Processing Status (ASCII) Reply	69
3.2.5.3.57	Sending Status (Unicode) Message	69
3.2.5.3.58	Processing Status (Unicode) Reply.....	69
3.2.5.3.59	Sending State Message	69
3.2.5.3.60	Processing State Message Reply	69
3.2.5.3.61	Sending BeginTransaction Message.....	69
3.2.5.3.62	Processing BeginTransaction Reply	69
3.2.5.3.63	Sending EndTransaction Message	69
3.2.5.3.64	Processing EndTransaction Reply	69
3.2.5.3.65	Sending Transmit Message	69
3.2.5.3.66	Processing Transmit Reply	70
3.2.5.3.67	Sending Control Message	70
3.2.5.3.68	Processing Control Reply	70
3.2.5.3.69	Sending GetReaderCapabilities Message.....	70
3.2.5.3.70	Processing GetReaderCapabilities Reply.....	70
3.2.5.3.71	Sending SetReaderCapabilities Message	70
3.2.5.3.72	Processing SetReaderCapabilities Reply.....	70
3.2.5.3.73	Sending WaitForResourceManager Message	70
3.2.5.3.74	Processing WaitForResourceManager Reply.....	70
3.2.5.3.75	Sending LocateCardsByATR (ASCII) Message.....	70
3.2.5.3.76	Processing LocateCardsByATR (Unicode) Reply.....	70
3.2.5.3.77	Processing LocateCardsByATR (ASCII) Reply.....	70
3.2.5.3.78	Sending LocateCardsByATR (Unicode) Message.....	71
3.2.5.3.79	Sending ReadCache (ASCII) Message.....	71
3.2.5.3.80	Processing ReadCache (ASCII) Reply	71
3.2.5.3.81	Sending ReadCache (Unicode) Message.....	71

3.2.5.3.82	Processing ReadCache (Unicode) Reply	71
3.2.5.3.83	Sending WriteCache (ASCII) Message	71
3.2.5.3.84	Processing WriteCache (ASCII) Reply	71
3.2.5.3.85	Sending WriteCache (Unicode) Message	71
3.2.5.3.86	Processing WriteCache (Unicode) Reply	71
3.2.5.3.87	Sending GetTransmitCount Message	71
3.2.5.3.88	Processing GetTransmitCount Reply	71
3.2.5.3.89	Sending GetReaderIcon Message	72
3.2.5.3.90	Processing GetReaderIcon Reply	72
3.2.5.3.91	Sending GetDeviceTypeId Message	72
3.2.5.3.92	Processing GetDeviceTypeId Reply	72
3.2.6	Timer Events	72
3.2.7	Other Local Events	72
4	Protocol Examples	73
4.1	Establish Context Call	74
4.2	Establish Context Return	74
4.3	List Readers Call	74
4.4	List Readers Return	74
4.5	Get Status Change Call	74
4.6	Get Status Change Return	75
4.7	Connect Call	75
4.8	Connect Return	75
4.9	Begin Transaction Call	75
4.10	Begin Transaction Return	76
4.11	Status Call	76
4.12	Status Return	76
4.13	End Transaction Call	76
4.14	End Transaction Return	76
4.15	Disconnect Call	77
4.16	Disconnect Return	77
4.17	Release Context Call	77
4.18	Release Context Return	77
5	Security	78
5.1	Security Considerations for Implementers	78
5.2	Index of Security Parameters	78
6	Appendix A: Full IDL	79
7	Appendix B: Product Behavior	86
8	Change Tracking	87
9	Index	88

1 Introduction

This document specifies an extension (including **virtual channels**) to the Remote Desktop Protocol: File System Virtual Channel Extension for supporting **smart card** reader-like devices.

Sections 1.5, 1.8, 1.9, 2, and 3 of this specification are normative. All other sections and examples in this specification are informative.

1.1 Glossary

This document uses the following terms:

Answer To Reset (ATR): The transmission sent by an ISO-7816-compliant Integrated Circuit Card (as specified in [\[ISO/IEC-7816-3\]](#) section 8) to a **smart card reader** in response to an ISO-7816-3-based RESET condition.

ASCII: The American Standard Code for Information Interchange (ASCII) is an 8-bit character-encoding scheme based on the English alphabet. ASCII codes represent text in computers, communications equipment, and other devices that work with text. ASCII refers to a single 8-bit ASCII character or an array of 8-bit ASCII characters with the high bit of each character set to zero.

build number: A part of a sequential numbering system that is used to differentiate one version of a software product from another.

call packet: A combination of **I/O control (IOCTL)** and a data structure request from a **protocol client** that corresponds to that **IOCTL**.

card type: A string that specifies a specific type of smart card that is recognized by **Smart Cards for Windows**.

device: Any peripheral or part of a computer system that can send or receive data.

device I/O: **Device** input/output.

device name: The friendly, human-readable name of a **device**.

HRESULT: An integer value that indicates the result or status of an operation. A particular HRESULT can have different meanings depending on the protocol using it. See [\[MS-ERREF\]](#) section 2.1 and specific protocol documents for further details.

I/O control (IOCTL): A command that is issued to a target file system or target device in order to query or alter the behavior of the target; or to query or alter the data and attributes that are associated with the target or the objects that are exposed by the target.

Interface Definition Language (IDL): The International Standards Organization (ISO) standard language for specifying the interface for remote procedure calls. For more information, see [\[C706\]](#) section 4.

Microsoft Terminal Services (TS): A component that allows a user to access applications or data stored on a remote computer over a network connection.

Multistring: A series of null-terminated character strings terminated by a final null character stored in a contiguous block of memory.

operating system version: A uniquely identifiable numbered string that is used to identify a particular operating system.

protocol client: An endpoint that initiates a protocol.

protocol server: An endpoint that processes the **call packet** from a **protocol client**.

reader group name: The friendly, human-readable name for a reader group.

Remote Desktop Protocol (RDP): A multi-channel protocol that allows a user to connect to a computer running **Microsoft Terminal Services (TS)**. RDP enables the exchange of client and server settings and also enables negotiation of common settings to use for the duration of the connection, so that input, graphics, and other data can be exchanged and processed between client and server.

remote procedure call (RPC): A communication protocol used primarily between client and server. The term has three definitions that are often used interchangeably: a runtime environment providing for communication facilities between computers (the RPC runtime); a set of request-and-response message exchanges between computers (the RPC exchange); and the single message from an RPC exchange (the RPC message). For more information, see [C706].

return packet: An encoded structure containing the result of a **call packet** operation executed on the **protocol client**.

smart card: A portable device that is shaped like a business card and is embedded with a memory chip and either a microprocessor or some non-programmable logic. **Smart cards** are often used as authentication tokens and for secure key storage. **Smart cards** used for secure key storage have the ability to perform cryptographic operations with the stored key without allowing the key itself to be read or otherwise extracted from the card.

smart card reader: A **device** used as a communication medium between the smart card and a Host; for example, a computer. Also referred to as a Reader.

smart card reader name: The friendly, human-readable name of the **smart card reader**. Also referred to as a Reader Name.

Smart Cards for Windows: An implementation of the ICC Resource Manager according to [\[PCSC5\]](#).

static virtual channel: A static transport used for lossless communication between a client component and a server component over a main data connection, as specified in [MS-RDPBCGR].

TS client: A Microsoft Terminal Services program that initiates a connection.

TS server: A Microsoft Terminal Services program that responds to a request from a **TS client**.

Unicode: A character encoding standard developed by the Unicode Consortium that represents almost all of the written languages of the world. The **Unicode** standard [\[UNICODE5.0.0/20071\]](#) provides three forms (UTF-8, UTF-16, and UTF-32) and seven schemes (UTF-8, UTF-16, UTF-16 BE, UTF-16 LE, UTF-32, UTF-32 LE, and UTF-32 BE).

Unicode string: A **Unicode** 8-bit string is an ordered sequence of 8-bit units, a **Unicode** 16-bit string is an ordered sequence of 16-bit code units, and a **Unicode** 32-bit string is an ordered sequence of 32-bit code units. In some cases, it could be acceptable not to terminate with a terminating null character. Unless otherwise specified, all **Unicode strings** follow the UTF-16LE encoding scheme with no Byte Order Mark (BOM).

universally unique identifier (UUID): A 128-bit value. UUIDs can be used for multiple purposes, from tagging objects with an extremely short lifetime, to reliably identifying very persistent objects in cross-process communication such as client and server interfaces, manager entry-point vectors, and **RPC** objects. UUIDs are highly likely to be unique. UUIDs are also known as globally unique identifiers (GUIDs) and these terms are used interchangeably in the Microsoft protocol technical documents (TDs). Interchanging the usage of these terms does not imply or require a specific algorithm or mechanism to generate the UUID. Specifically, the use of

this term does not imply or require that the algorithms described in [\[RFC4122\]](#) or [C706] must be used for generating the UUID.

virtual channel: A communication channel available in a TS server session between applications running at the server and applications running on the TS client.

MAY, SHOULD, MUST, SHOULD NOT, MUST NOT: These terms (in all caps) are used as defined in [\[RFC2119\]](#). All statements of optional behavior use either MAY, SHOULD, or SHOULD NOT.

1.2 References

Links to a document in the Microsoft Open Specifications library point to the correct section in the most recently published version of the referenced document. However, because individual documents in the library are not updated at the same time, the section numbers in the documents may not match. You can confirm the correct section numbering by checking the [Errata](#).

1.2.1 Normative References

We conduct frequent surveys of the normative references to assure their continued availability. If you have any issue with finding a normative reference, please contact dochelp@microsoft.com. We will assist you in finding the relevant information.

[C706] The Open Group, "DCE 1.1: Remote Procedure Call", C706, August 1997,
<https://publications.opengroup.org/c706>

Note Registration is required to download the document.

[ISO/IEC-7816-3] International Organization for Standardization, "Identification Cards -- Integrated Circuit Cards -- Part 3: Cards with Contacts -- Electrical Interface and Transmission Protocols", ISO/IEC 7816-3, October 2006,
http://www.iso.org/iso/home/store/catalogue_tc/catalogue_detail.htm?csnumber=38770

Note There is a charge to download the specification.

[ISO/IEC-7816-4] International Organization for Standardization, "Identification Cards -- Integrated Circuit Cards -- Part 4: Organization, Security, and Commands for Interchange", ISO/IEC 7816-4, January 2005,
http://www.iso.org/iso/home/store/catalogue_tc/catalogue_detail.htm?csnumber=36134

Note There is a charge to download the specification.

[MS-DCOM] Microsoft Corporation, "[Distributed Component Object Model \(DCOM\) Remote Protocol](#)".

[MS-DTYP] Microsoft Corporation, "[Windows Data Types](#)".

[MS-ERREF] Microsoft Corporation, "[Windows Error Codes](#)".

[MS-RDPBCGR] Microsoft Corporation, "[Remote Desktop Protocol: Basic Connectivity and Graphics Remoting](#)".

[MS-RDPEFS] Microsoft Corporation, "[Remote Desktop Protocol: File System Virtual Channel Extension](#)".

[MS-RPCE] Microsoft Corporation, "[Remote Procedure Call Protocol Extensions](#)".

[PCSC3] PC/SC Workgroup, "Interoperability Specification for ICCs and Personal Computer Systems - Part 3: Requirements for PC-Connected Interface Devices", June 2007,
http://pcscworkgroup.com/Download/Specifications/pcsc3_v2.01.09.pdf

[PCSC5] PC/SC Workgroup, "Interoperability Specification for ICCs and Personal Computer Systems - Part 5: ICC Resource Manager Definition", September 2005, http://pcscworkgroup.com/Download/Specifications/pcsc5_v2.01.01.pdf

[RFC2119] Bradner, S., "Key words for use in RFCs to Indicate Requirement Levels", BCP 14, RFC 2119, March 1997, <http://www.rfc-editor.org/rfc/rfc2119.txt>

1.2.2 Informative References

None.

1.3 Overview

The following figure illustrates a baseline for terminology related to clients and servers.

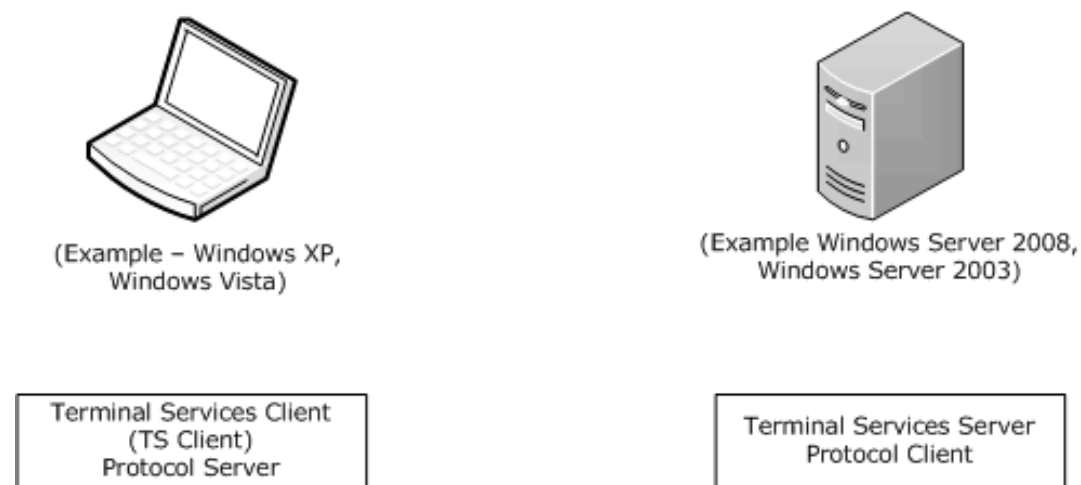


Figure 1: TS and protocol client-server definition

Remote Desktop Protocol (RDP) Device Redirection enables client **devices** (for example, printers, **smart card readers**, drives, audio, serial ports, and parallel ports) to be available to server-side applications, within the context of a single RDP session. This protocol is specified in [\[MS-RDPEFS\]](#).

Smart Card Redirection is an asynchronous client/server protocol, an extension (specified in [\[MS-RDPEFS\]](#)) that is designed to remotely execute requests on a client's **Smart Cards for Windows**. These requests would have otherwise been executed on the server. Each request is composed of two packets: a **call packet** and **return packet**. The **protocol client (Microsoft Terminal Services (TS) server)** sends a call packet after an initial announcement by the **protocol server (TS client)**, and will receive a return packet after the request has been completed or an error has occurred. Remote Desktop Protocol (RDP) Device Redirection uses a **static virtual channel** as its transport.

Smart Card Redirection redirects the TS client-side Smart Cards for Windows. When Smart Card Redirection is in effect, **TS server** application **smart card** subsystem calls (for example, EstablishContext) are automatically remapped to the TS client-side Smart Cards for Windows, which will then receive the corresponding request. Smart Card Redirection devices are only required to understand one type of **device I/O** request.

The following figure shows a high-level sequence diagram of the protocol for redirected calls. Device Announce and Device Disconnect are handled via the lower-layer protocols.

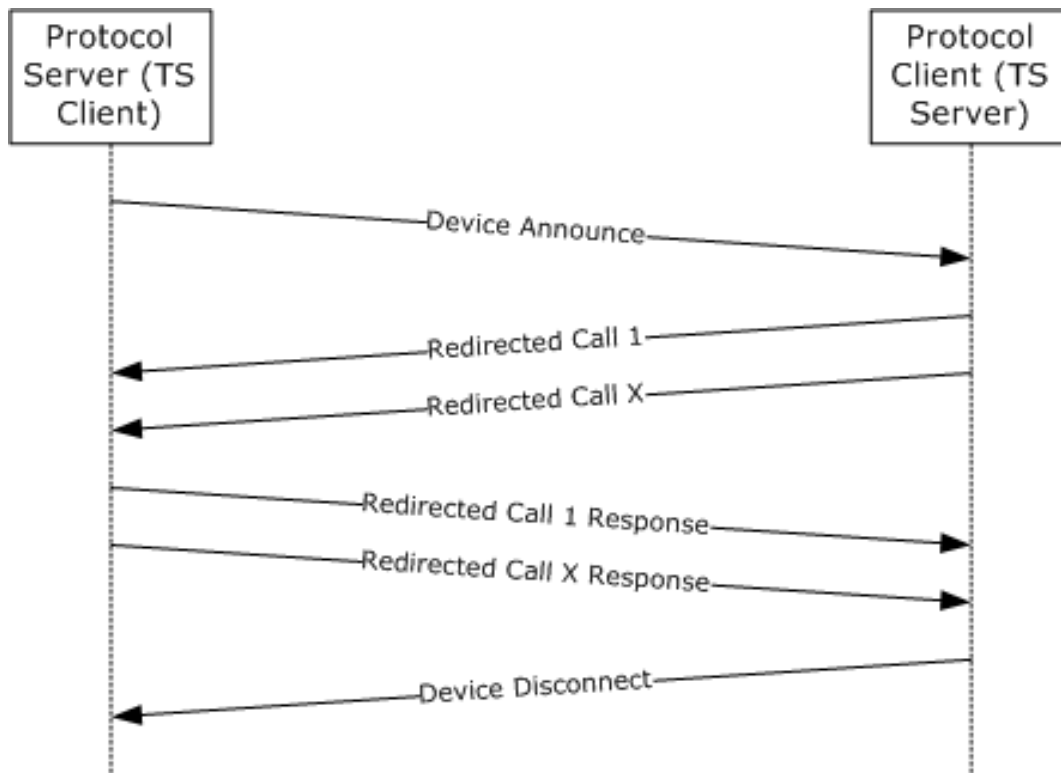


Figure 2: High-level protocol sequence

The following figure specifies how the messages are encoded and routed from a TS client to a TS server. The following numbered list details corresponding actions related to the pictured protocol flow.

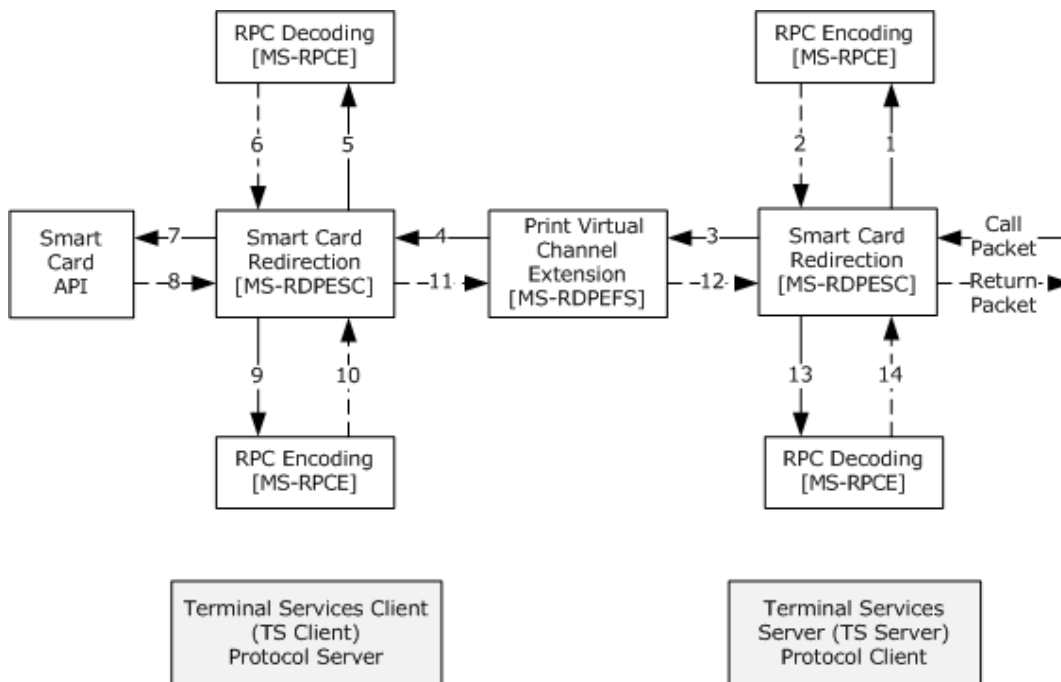


Figure 3: Protocol flow

The input for this protocol (call packet) is a combination of an **I/O control (IOCTL)** and the corresponding structure as specified in [3.2.5](#).

1. The call packet structure is encoded as specified in [\[MS-RPCE\]](#) section 2.2.6.
2. The packet, as specified in [\[MS-RPCE\]](#), is returned as a response to 1.
3. The encoded value from 2 is combined with the IOCTL and transported over RDP Device Redirection, as specified in [\[MS-RDPEFS\]](#) section 2.
4. On the TS client, Remote Desktop Protocol: File System Virtual Channel Extension will route the packet from 3 to protocol server for the Smart Card Redirection, as specified in [\[MS-RDPEFS\]](#) section 2.
5. After Smart Card Redirection receives the message, the encoded structure is decoded, as specified in [\[MS-RPCE\]](#) section 2.2.6.
6. The packet, decoded as specified in [\[MS-RPCE\]](#), is a response to 5.
7. Based on the IOCTL, the structure members are used as input parameters to the Smart Cards for Windows, as specified in [\[PCSC5\]](#) section 3.
8. The output parameters including the return code are packaged into the return packet structure for this IOCTL.
9. The return packet structure is encoded as specified in [\[MS-RPCE\]](#) section 2.2.6.
10. Return data, encoded as specified in [\[MS-RPCE\]](#), is a response to 9.
11. The encoded value from 10 is sent to RDP Device Redirection (as specified in [\[MS-RDPEFS\]](#)) as a reply to the call packet from 4.
12. RDP Device Redirection (as specified in [\[MS-RDPEFS\]](#)) routes the reply back to the protocol client.
13. On receipt of packet from 12, the encoded structure is decoded as specified by to [\[MS-RPCE\]](#) section 2.2.6.
14. In response to 13, return data is decoded as specified by [\[MS-RPCE\]](#).

The output from the Smart Card Redirection is the return packet. This data will then be processed by higher layers.

1.4 Relationship to Other Protocols

This protocol extension expands Remote Desktop Protocol: File System Virtual Channel Extension [\[MS-RDPEFS\]](#) functionality to provide support for **Smart Cards for Windows**.

This protocol relies on the Distributed Component Object Model (DCOM) Remote Protocol [\[MS-DCOM\]](#), which uses **remote procedure call (RPC)** as its transport.

This protocol uses the Remote Procedure Call Protocol Extensions ([\[MS-RPCE\]](#) section 2) to encode packet structures carried within an RDP session.

1.5 Prerequisites/Preconditions

RDP Device Redirection transport (as specified in [\[MS-RDPEFS\]](#) section 2.2.2.7.5) must be configured to redirect **smart card devices**.

1.6 Applicability Statement

This specification applies to redirecting **Smart Cards for Windows** API-based calls for a Terminal Services client, as specified in [\[PCSC5\]](#) section 3.

1.7 Versioning and Capability Negotiation

This document covers versioning issues in the following areas:

- Protocol Versions: Smart Card Redirection supports the dialects SCREDIR_VERSION_XP (1), SCREDIR_VERSION_LONGHORN (2), and SCREDIR_VERSION_WINDOWS_8 (3).
- Capability Negotiation: The Smart Card Redirection protocol does not support negotiation of the dialect to use. Instead, an implementation is configured with the dialect to use.

The **TS server** determines the dialect to use by analyzing the client **build number** on **device** announce as specified in [\[MS-RDPBCGR\]](#) section 2.2.1.3.2 using the following mapping. <1>

Build Number	Dialect
>= 7865	SCREDIR_VERSION_WINDOWS_8 (3)
>= 4034 and < 7865	SCREDIR_VERSION_LONGHORN (2)
< 4034	SCREDIR_VERSION_XP (1)

1.8 Vendor-Extensible Fields

This protocol uses **HRESULTS** as defined in [\[MS-ERREF\]](#) section 2.1. Vendors can define their own HRESULT values, provided that they set the C bit (0x20000000) for each vendor-defined value, indicating that the value is a customer code.

This protocol uses Win32 error codes. These values are taken from the Windows error number space, as specified in [\[MS-ERREF\]](#) section 2.2. Vendors SHOULD reuse those values with their indicated meaning. Choosing any other value runs the risk of a collision in the future.

This protocol uses NTSTATUS values as specified in [\[MS-ERREF\]](#) section 2.3. Vendors are free to choose their own values for this field, provided that they set the C bit (0x20000000) for each vendor-defined value, indicating it is a that customer code.

IOCTL fields used in this specification are extensible. Vendors MUST implement the corresponding functions.

1.9 Standards Assignments

This protocol uses the following RPC UUID for the type_scard_pack interface.

Parameter	Value	Reference
Remote procedure call (RPC) interface universally unique identifier (UUID)	A35AF600-9CF4-11CD-A076-08002B2BD711	[C706] Appendix A 2.5

2 Messages

The following sections specify how Remote Desktop Protocol: Smart Card Virtual Channel Extension messages are transported, and common data types.

2.1 Transport

All messages MUST be transported over established RDP Device Extensions (as specified in [\[MS-RDPEFS\]](#) section 2.1). This protocol uses the **device** enumerate and announcement messages, as specified in [\[MS-RDPEFS\]](#) section 3.

Remote Desktop Protocol: File System Virtual Channel Extension is responsible for providing a unique Device ID as defined in [\[MS-RDPEFS\]](#) section 3.1.1.

2.2 Common Data Types

All structures in this section MUST be encoded as specified in [\[MS-RPCE\]](#) section 2. Unless otherwise stated, the structure MUST be initialized to zero before use.

2.2.1 Common Structures

The structures defined in the following sections are common among both TS server-generated structures (for more information, see section [2.2.2](#)) and TS client-generated structures (for more information, see section [2.2.3](#)).

2.2.1.1 REDIR_SCARDCONTEXT

REDIR_SCARDCONTEXT represents a context to **Smart Cards for Windows** on the **TS client**.

```
typedef struct _REDIR_SCARDCONTEXT {
    [range(0,16)] unsigned long cbContext;
    [unique] [size is(cbContext)] byte *pbContext;
} REDIR_SCARDCONTEXT;
```

cbContext: The number of bytes in the **pbContext** field.

pbContext: An array of **cbContext** bytes that contains Smart Cards for Windows context. The data is implementation-specific and MUST NOT be interpreted or changed on the **Protocol server**.

2.2.1.2 REDIR_SCARDHANDLE

REDIR_SCARDHANDLE represents a **smart card reader** handle associated with **Smart Cards for Windows** context.

```
typedef struct REDIR_SCARDHANDLE {
    REDIR_SCARDCONTEXT Context;
    [range(0,16)] unsigned long cbHandle;
    [size is(cbHandle)] byte *pbHandle;
} REDIR_SCARDHANDLE;
```

Context: A valid context, as specified in [REDIR_SCARDCONTEXT](#).

cbHandle: The number of bytes in the **pbHandle** field.

pbHandle: An array of **cbHandle** bytes that corresponds to a smart card reader handle on the **TS client**. The data is implementation-specific and MUST NOT be interpreted or changed on the **Protocol server**.

2.2.1.3 Connect_Common

The Connect_Common structure contains information common to both versions of the Connect function (for more information, see sections [2.2.2.13](#) and [2.2.2.14](#)).

```
typedef struct Connect_Common {
    REDIR_SCARDCONTEXT Context;
    unsigned long dwShareMode;
    unsigned long dwPreferredProtocols;
} Connect_Common;
```

Context: A valid context, as specified in section [2.2.1.1](#).

dwShareMode: A flag that indicates whether other applications are allowed to form connections to the card. Possible values of this field are specified in section [2.2.6](#).

dwPreferredProtocols: A bitmask of acceptable protocols for the connection, as specified in section [2.2.5](#).

2.2.1.4 LocateCards_ATRMask

The LocateCards_ATRMask structure contains the information to identify a **card type**.

```
typedef struct LocateCards_ATRMask {
    [range(0,36)] unsigned long cbAtr;
    byte rgbAtr[36];
    byte rgbMask[36];
} LocateCards_ATRMask;
```

cbAtr: The number of bytes used in the **rgbAtr** and **rgbMask** fields.

rgbAtr: Values for the card's **Answer To Reset (ATR)** string. This value MUST be formatted as specified in [\[ISO/IEC-7816-3\]](#) section 8. Unused bytes MUST be set to 0 and MUST be ignored.

rgbMask: Values for the mask for the card's ATR string. Each bit that cannot vary between cards of the same type MUST be set to 1. Unused bytes MUST be set to 0 and MUST be ignored.

2.2.1.5 ReaderState_Common_Call

The ReaderState_Common_Call structure contains the state of the reader at the time of the call as seen by the caller.

```
typedef struct _ReaderState_Common_Call {
    unsigned long dwCurrentState;
    unsigned long dwEventState;
    [range(0,36)] unsigned long cbAtr;
    byte rgbAtr[36];
} ReaderState_Common_Call;
```

dwCurrentState: A bitmap that specifies the current reader state according to the **TS client**. Possible values are specified in section [2.2.7](#).

dwEventState: A bitmap that defines the state of the reader after a state change. Possible values are specified in section 2.2.7.

cbAtr: The number of bytes used in the **ATR** string.

rgbAtr: The value for the card's ATR string. If **cbAtr** is NOT zero, this value MUST be formatted in accordance to [\[ISO/IEC-7816-3\]](#) section 8. Unused bytes MUST be set to 0 and MUST be ignored.

2.2.1.6 ReaderStateA

The ReaderStateA structure contains information used in calls that only require **Smart Cards for Windows** context and an **ASCII** string.

```
typedef struct _ReaderStateA {
    [string] const char* szReader;
    ReaderState_Common_Call Common;
} ReaderStateA;
```

szReader: An ASCII string specifying the **reader name**.

Common: A packet that specifies the state of the reader at the time of the call. For information about this packet, see section [2.2.1.5](#).

2.2.1.7 ReaderStateW

The ReaderStateW structure is a **Unicode** representation of the state of a **smart card reader**.

```
typedef struct _ReaderStateW {
    [string] const wchar_t* szReader;
    ReaderState_Common_Call Common;
} ReaderStateW;
```

szReader: A **Unicode string** specifying the **reader name**.

Common: A packet that specifies the state of the reader at the time of the call. For information about this packet, see section [2.2.1.5](#).

2.2.1.8 SCardIO_Request

The SCardIO_Request structure represents the data to be prepended to a Transmit command (for more information, see section [3.1.4.35](#)).

```
typedef struct _SCardIO_Request {
    unsigned long dwProtocol;
    [range(0,1024)] unsigned long cbExtraBytes;
    [unique] [size_is(cbExtraBytes)] byte *pbExtraBytes;
} SCardIO_Request;
```

dwProtocol: The protocol in use. Possible values are specified in section [2.2.5](#).

cbExtraBytes: The number of bytes in the **pbExtraBytes** field.

pbExtraBytes: Request data.

2.2.1.9 ReadCache_Common

The ReadCache_Common structure contains information common to both the [ReadCacheA_Call](#) and [ReadCacheW_Call](#) structures.

```
typedef struct ReadCache_Common {
    REDIR_SCARDCONTEXT Context;
    UUID* CardIdentifier;
    unsigned long FreshnessCounter;
    long fPbDataIsNull;
    unsigned long cbDataLen;
} ReadCache_Common;
```

Context: A valid context, as specified in section [2.2.1.1](#).

CardIdentifier: A **UUID** that specifies the name of the **smart card** with which the name-value pair is associated.

FreshnessCounter: A value specifying the current revision of the data.

fPbDataIsNull: A Boolean value specifying whether the caller wants to retrieve the length of the data. It MUST be set to TRUE (0x00000001) if the caller wants only to retrieve the length of the data; otherwise, it MUST be set to FALSE (0x00000000).

cbDataLen: The length of the buffer specified on the server side. If **cbDataLen** is set to SCARD_AUTOALLOCATE with a value of 0xFFFFFFFF, a buffer of any length can be returned. Otherwise, the returned buffer MUST NOT exceed **cbDataLen** bytes. This field MUST be ignored if **fPbDataIsNull** is set to TRUE (0x00000001).

2.2.1.10 WriteCache_Common

The WriteCache_Common structure contains information common between the [WriteCacheA_Call](#) and [WriteCacheW_Call](#) structures.

```
typedef struct _WriteCache_Common {
    REDIR_SCARDCONTEXT Context;
    UUID *CardIdentifier;
    unsigned long FreshnessCounter;
    [range(0,65536)] unsigned long cbDataLen;
    [unique] [size_is(cbDataLen)] byte *pbData;
} WriteCache_Common;
```

Context: A valid context, as specified in section [2.2.1.1](#).

CardIdentifier: A **UUID** that identifies the **smart card** with which the data SHOULD be stored. CardIdentifier MUST be a unique value per the smart card.

FreshnessCounter: A value specifying the current revision of the data.

cbDataLen: The number of bytes in the **pbData** field.

pbData: **cbDataLen** bytes of data to be stored.

2.2.1.11 ReaderState_Return

The ReaderState_Return structure specifies state information returned from **Smart Cards for Windows**.

```

typedef struct _ReaderState_Return {
    unsigned long dwCurrentState;
    unsigned long dwEventState;
    [range(0,36)] unsigned long cbAtr;
    byte rgbAtr[36];
} ReaderState_Return;

```

dwCurrentState: A bitmap that defines the current state of the reader at the time of the call. Possible values are specified in section [2.2.7](#).

dwEventState: A bitmap that defines the state of the reader after a state change as seen by Smart Cards for Windows. Possible values are specified in section 2.2.7.

cbAtr: The number of used bytes in **rgbAtr**.

rgbAtr: The values for the card's **ATR** string. Unused bytes **MUST** be set to zero and **MUST** be ignored on receipt.

2.2.2 TS Server-Generated Structures

All structures in this section are sent from the **TS server** to the **TS client**.

2.2.2.1 EstablishContext_Call

The EstablishContext_Call structure is used to specify the scope of **Smart Cards for Windows** context to be created (for more information, see section [3.1.4.1](#)).

```

typedef struct _EstablishContext_Call {
    unsigned long dwScope;
} EstablishContext_Call;

```

dwScope: The scope of the context that will be established. The following table shows valid values of this field.

Value	Meaning
SCARD_SCOPE_USER 0x00000000	The context is a user context; any database operations MUST be performed with the domain of the user.
SCARD_SCOPE_TERMINAL 0x00000001	The context is a terminal context; any database operations MUST be performed with the domain of the terminal. This flag is currently unused; it is here for compatibility with [PCSC5] section 3.1.3.
SCARD_SCOPE_SYSTEM 0x00000002	The context is the system context; any database operations MUST be performed within the domain of the system.

2.2.2.2 Context_Call

The Context_Call structure contains **Smart Cards for Windows** context.

```

typedef struct _Context_Call {
    REDIR_SCARDCONTEXT Context;
} Context_Call;

```

Context: A valid context, as specified in section [2.2.1.1](#).

2.2.2.3 ListReaderGroups_Call

The ListReaderGroups_Call structure contains the parameters for the List Readers Groups call (for more information, see sections [3.1.4.5](#) and [3.1.4.6](#)).

```
typedef struct _ListReaderGroups_Call {  
    REDIR SCARDCONTEXT Context;  
    long fmszGroupsIsNull;  
    unsigned long cchGroups;  
} ListReaderGroups_Call;
```

Context: A valid context, as specified in section [2.2.1.1](#).

fmszGroupsIsNull: A Boolean value specifying whether the caller wants to retrieve just the length of the data. Set to FALSE (0x00000000) in order to allow the data to be returned. Set to TRUE (0x00000001) and only the length of the data will be returned.

cchGroups: The length of the string buffer specified by the caller. If **cchGroups** is set to SCARD_AUTOALLOCATE with a value of 0xFFFFFFFF, a string of any length can be returned. Otherwise, the returned string MUST NOT exceed **cchGroups** characters in length, including any null characters. When the string to be returned exceeds **cchGroups** characters in length, including any null characters, [ListReaderGroups_Return.ReturnCode](#) MUST be set to SCARD_E_INSUFFICIENT_BUFFER (0x80100008). The **cchGroups** field MUST be ignored if **fmszGroupsIsNull** is set to TRUE (0x00000001). Also, if **fmszGroupsIsNull** is set to FALSE (0x00000000) but **cchGroups** is set to 0x00000000, then the call MUST succeed, [ListReaderGroups_Return.cBytes](#) MUST be set to the length of the data, in bytes, and [ListReaderGroups_Return.msز](#) MUST be set to NULL.

2.2.2.4 ListReaders_Call

The ListReaders_Call structure contains the parameters for the List Readers call (for more information, see sections [3.1.4.7](#) and [3.1.4.8](#)).

```
typedef struct _ListReaders_Call {  
    REDIR SCARDCONTEXT Context;  
    [range(0, 65536)] unsigned long cBytes;  
    [unique] [size is(cBytes)] const byte *mszGroups;  
    long fmszReadersIsNull;  
    unsigned long cchReaders;  
} ListReaders_Call;
```

Context: A valid context, as specified in section [2.2.1.1](#).

cBytes: The length, in bytes, of reader groups specified in **mszGroups**.

mszGroups: The names of the reader groups defined in the system. Reader groups not present on the **protocol server** MUST be ignored. The value of this is dependent on the context (**IOCTL**) that it is used.

Value	Meaning
SCARD_IOCTL_LISTREADERSA 0x00090028	ASCII multistring
SCARD_IOCTL_LISTREADERSW	Unicode multistring

Value	Meaning
0x0009002C	

fmszReadersIsNULL: A Boolean value specifying whether the caller wants to retrieve the length of the data. Set to FALSE (0x00000000) to allow the data to be returned. Set to TRUE (0x00000001), and only the length of the data will be returned.

cchReaders: The length of the string buffer specified by the caller. If **cchReaders** is set to SCARD_AUTOALLOCATE with a value of 0xFFFFFFFF, a string of any length can be returned. Otherwise, the returned string MUST NOT exceed **cchReaders** characters in length, including any NULL characters. When the string to be returned exceeds **cchReaders** characters in length, including any null characters, [ListReaders_Return.ReturnCode](#) MUST be set to SCARD_E_INSUFFICIENT_BUFFER (0x80100008). The **cchReaders** field MUST be ignored if **fmszReadersIsNULL** is set to TRUE (0x00000001). Also, if **fmszReadersIsNULL** is set to FALSE (0x00000000) but **cchReaders** is set to 0x00000000, then the call MUST succeed, [ListReaders_Return.cBytes](#) MUST be set to the length of the data in bytes, and [ListReaders_Return.msiz](#) MUST be set to NULL.

2.2.2.5 ContextAndStringA_Call

The ContextAndStringA_Call structure contains information used in calls that only require a **Smart Cards for Windows** context and an **ASCII** string.

```
typedef struct _ContextAndStringA_Call {
    REDIR_SCARDCONTEXT Context;
    [string] const char* sz;
} ContextAndStringA_Call;
```

Context: A valid context, as specified in section [2.2.1.1](#).

sz: The value of this string depends on the context (based on **IOCTL**) in which this structure is used.

Value	Meaning
SCARD_IOCTL_INTRODUCEREADERGROUPA 0x00090050	Reader group name
SCARD_IOCTL_FORGETREADERGROUPA 0x00090058	Reader group name
SCARD_IOCTL_FORGETREADERA 0x00090068	Reader name

2.2.2.6 ContextAndStringW_Call

The ContextAndStringW_Call structure contains information used in calls that only require a **Smart Cards for Windows** context and a **Unicode string**.

```
typedef struct _ContextAndStringW_Call {
    REDIR_SCARDCONTEXT Context;
    [string] const wchar_t* sz;
} ContextAndStringW_Call;
```


Context: A valid context, as specified in section [2.2.1.1](#).

sz: The value of this Unicode string depends on the context (based on **IOCTL**) in which this structure is used.

Value	Meaning
SCARD_IOCTL_INTRODUCEREADERGROUPW 0x00090054	Reader group name
SCARD_IOCTL_FORGETREADERGROUPW 0x0009005C	Reader group name
SCARD_IOCTL_FORGETREADERW 0x0009006C	Reader name

2.2.2.7 ContextAndTwoStringA_Call

The contents of the ContextAndTwoStringA_Call structure are used in those calls that require a valid **Smart Cards for Windows** context (as specified in section [3.2.5](#)) and two strings (friendly names).

```
typedef struct _ContextAndTwoStringA_Call {  
    REDIR_SCARDCONTEXT Context;  
    [string] const char* sz1;  
    [string] const char* sz2;  
} ContextAndTwoStringA_Call;
```

Context: A valid context, as specified in section [2.2.1.1](#).

sz1: The value of this **ASCII** string depends on the context (based on **IOCTL**) in which it is used.

Value	Meaning
SCARD_IOCTL_INTRODUCEREADERA 0x00090060	Reader name
SCARD_IOCTL_ADDREADERTOGROUPA 0x00090070	Reader name
SCARD_IOCTL_REMOVEREADERFROMGROUPA 0x00090078	Reader name

sz2: The value of this ASCII string depends on the context (based on **IOCTL**) in which it is used.

Value	Meaning
SCARD_IOCTL_INTRODUCEREADERA 0x00090060	Device name
SCARD_IOCTL_ADDREADERTOGROUPA 0x00090070	Reader group name
SCARD_IOCTL_REMOVEREADERFROMGROUPA 0x00090078	Reader group name

2.2.2.8 ContextAndTwoStringW_Call

The contents of the ContextAndTwoStringW_Call structure is used in those calls that require a valid **Smart Cards for Windows** context (as specified in section [3.2.5](#)) and two strings (friendly names).

```
typedef struct _ContextAndTwoStringW_Call {
    REDIR_SCARDCONTEXT Context;
    [string] const wchar_t* sz1;
    [string] const wchar_t* sz2;
} ContextAndTwoStringW_Call;
```

Context: A valid context, as specified in section [2.2.1.1](#).

sz1: The value of this **Unicode string** depends on the context (based on **IOCTL**) in which it is used.

Value	Meaning
SCARD_IOCTL_INTRODUCEREADERW 0x00090064	Reader name
SCARD_IOCTL_ADDREADERTOGROUPW 0x00090074	Reader name
SCARD_IOCTL_REMOVEREADERFROMGROUPW 0x0009007C	Reader name

sz2: The value of this Unicode string depends on the context (based on IOCTL) in which it is used.

Value	Meaning
SCARD_IOCTL_INTRODUCEREADERW 0x00090064	Device name
SCARD_IOCTL_ADDREADERTOGROUPW 0x00090074	Reader group name
SCARD_IOCTL_REMOVEREADERFROMGROUPW 0x0009007C	Reader group name

2.2.2.9 LocateCardsA_Call

The parameters of the LocateCardsA_Call structure specify the list of **smart card readers** to search for the specified **card types**. For call information, see section [3.1.4.21](#).

```
typedef struct LocateCardsA_Call {
    REDIR_SCARDCONTEXT Context;
    [range(0, 65536)] unsigned long cBytes;
    [size_is(cBytes)] const byte* mszCards;
    [range(0,10)] unsigned long cReaders;
    [size_is(cReaders)] ReaderStateA* rgReaderStates;
} LocateCardsA_Call;
```

Context: A valid context, as specified in section [2.2.1.1](#).

cBytes: The number of bytes in the **mszCards** field.

mszCards: An **ASCII multistring** of card names to locate. Card names MUST be registered in **Smart Cards for Windows**. Unknown card types MUST be ignored.

cReaders: The number of reader state structures.

rgReaderStates: The reader state information specifying which readers are searched for the cards listed in **mszCards**.

2.2.2.10 LocateCardsW_Call

The parameters of the LocateCardsW_Call structure specify the list of **smart card readers** to search for the specified **card types**. For more information, see section [3.1.4.22](#).

```
typedef struct _LocateCardsW_Call {
    REDIR_SCARDCONTEXT Context;
    [range(0,65536)] unsigned long cBytes;
    [size_is(cBytes)] const byte* mszCards;
    [range(0,10)] unsigned long cReaders;
    [size_is(cReaders)] ReaderStateW* rgReaderStates;
} LocateCardsW_Call;
```

Context: A valid context, as specified in section [2.2.1.1](#).

cBytes: The number of bytes in the **mszCards** field.

mszCards: A **Unicode multistring** of card names to locate. Card names MUST be registered in **Smart Cards for Windows**. Unknown card types MUST be ignored.

cReaders: The number of reader state structures.

rgReaderStates: The reader state information used to locate the cards listed in *mszCards*.

2.2.2.11 GetStatusChangeA_Call

The GetStatusChangeA_Call structure provides the state change in the reader as specified in section [3.1.4.23](#).

```
typedef struct _GetStatusChangeA_Call {
    REDIR_SCARDCONTEXT Context;
    unsigned long dwTimeOut;
    [range(0,11)] unsigned long cReaders;
    [size_is(cReaders)] ReaderStateA* rgReaderStates;
} GetStatusChangeA_Call;
```

Context: A valid context, as specified in section [2.2.1.1](#).

dwTimeOut: The maximum amount of time, in milliseconds, to wait for an action. If this member is set to 0xFFFFFFFF (INFINITE), the caller MUST wait until an action occurs.

cReaders: The number of ReaderStates to track.

rgReaderStates: **Smart card readers** that the caller is tracking.

2.2.2.12 GetStatusChangeW_Call

The GetStatusChangeW_Call structure provides the state change in the Reader as specified in section [3.1.4.24](#).

```
typedef struct GetStatusChangeW_Call {
    REDIR_SCARDCONTEXT Context;
    unsigned long dwTimeout;
    [range(0,11)] unsigned long cReaders;
    [size_is(cReaders)] ReaderStateW* rgReaderStates;
} GetStatusChangeW_Call;
```

Context: A valid context, as specified in section [2.2.1.1](#).

dwTimeout: Maximum amount of time, in milliseconds, to wait for an action. If set to 0xFFFFFFFF (INFINITE), the caller MUST wait until an action occurs.

cReaders: The number of ReaderStates to track.

rgReaderStates: **Smart card readers** that the caller is tracking.

2.2.2.13 ConnectA_Call

ConnectA_Call opens a connection to the **smart card** located in the reader identified by a reader name.

```
typedef struct _ConnectA_Call {
    [string] const char* szReader;
    Connect_Common Common;
} ConnectA_Call;
```

szReader: An **ASCII** string specifying the **reader name** to connect to.

Common: Additional parameters that are required for the Connect call are specified in section [3.1.4.28](#). For more information, see section [2.2.1.3](#).

2.2.2.14 ConnectW_Call

The ConnectW_Call structure is used to open a connection to the **smart card** located in the reader identified by a **reader name**.

```
typedef struct _ConnectW_Call {
    [string] const wchar_t* szReader;
    Connect_Common Common;
} ConnectW_Call;
```

szReader: A **Unicode string** specifying the reader name to connect to.

Common: Additional parameters that are required for the Connect call. For more information, see sections [3.1.4.29](#) and [2.2.1.3](#).

2.2.2.15 Reconnect_Call

The Reconnect_Call structure is used to reopen a connection to the **smart card** associated with a valid context. For more information, see section [3.1.4.36](#).

```
typedef struct _Reconnect_Call {
    REDIR_SCARDHANDLE hCard;
    unsigned long dwShareMode;
    unsigned long dwPreferredProtocols;
    unsigned long dwInitialization;
} Reconnect_Call;
```

hCard: A handle, as specified in section [2.2.1.2](#).

dwShareMode: A flag that indicates whether other applications can form connections to this card. For acceptable values of this field, see section [2.2.6](#).

dwPreferredProtocols: A bit mask of acceptable protocols for this connection. For specifics on possible values, see section [2.2.5](#).

dwInitialization: A type of initialization that SHOULD be performed on the card.

Value	Meaning
SCARD_LEAVE_CARD 0x00000000	Do not do anything.
SCARD_RESET_CARD 0x00000001	Reset the smart card.
SCARD_UNPOWER_CARD 0x00000002	Turn off and reset the smart card.

2.2.2.16 HCardAndDisposition_Call

The HCardAndDisposition_Call structure defines the action taken on the disposition of a **smart card** associated with a valid context when a connection is terminated.

```
typedef struct _HCardAndDisposition_Call {
    REDIR_SCARDHANDLE hCard;
    unsigned long dwDisposition;
} HCardAndDisposition_Call;
```

hCard: A handle, as specified in section [2.2.1.2](#).

dwDisposition: The action to take on the card in the connected reader upon close. This value is ignored on a BeginTransaction message call, as specified in section [3.2.5.3.61](#).

Value	Meaning
SCARD_LEAVE_CARD 0x00000000	Do not do anything.
SCARD_RESET_CARD 0x00000001	Reset the smart card.
SCARD_UNPOWER_CARD 0x00000002	Turn off and reset the smart card.
SCARD_EJECT_CARD	Eject the smart card.

Value	Meaning
0x00000003	

2.2.2.17 State_Call

The State_Call structure defines parameters to the State call (as specified in section [3.1.4.40](#)) for querying the contents of a **smart card reader**.

```
typedef struct _State_Call {
    REDIR_SCARDHANDLE hCard;
    long fpbAttrIsNull;
    unsigned long cbAttrLen;
} State_Call;
```

hCard: A handle, as specified in section [2.2.1.2](#).

fpbAttrIsNull: A Boolean value specifying whether the caller wants to retrieve the length of the data. Set to FALSE (0x00000000) to allow the data to be returned. Set to TRUE (0x00000001), and only the length of the data will be returned. SHOULD be set to TRUE if **cbAttrLen** is set to SCARD_AUTOALLOCATE (0xFFFFFFFF).

Name	Value
FALSE	0x00000000
TRUE	0x00000001

cbAttrLen: The length of the buffer specified on the **TS server** side. If **cbAttrLen** is set to SCARD_AUTOALLOCATE with a value of 0xFFFFFFFF, an array of any length can be returned. Otherwise, the returned array MUST NOT exceed **cbAttrLen** bytes in length. When the array to be returned exceeds **cbAttrLen** bytes in length, [State_Return.ReturnCode](#) MUST be set to SCARD_E_INSUFFICIENT_BUFFER (0x80100008). Also, **cbAttrLen** is ignored if **fpbAttrIsNull** is set to TRUE (0x00000001). If **fpbAttrIsNull** is set to FALSE (0x00000000) but **cbAttrLen** is set to 0x00000000, then the call MUST succeed, [State_Return.cbAttrLen](#) MUST be set to the length of the data in bytes, and [State_Return.rgAttr](#) MUST be set to NULL.

2.2.2.18 Status_Call

Status_Call obtains the status of a connection for a valid **smart card reader** handle.

```
typedef struct _Status_Call {
    REDIR_SCARDHANDLE hCard;
    long fmszReaderNamesIsNull;
    unsigned long cchReaderLen;
    unsigned long cbAttrLen;
} Status_Call;
```

hCard: A handle, as specified in section [2.2.1.2](#).

fmszReaderNamesIsNull: A Boolean value specifying whether the caller wants to retrieve the length of the data. Set to FALSE (0x00000000) to allow the data to be returned. Set to TRUE (0x00000001), and only the length of the data will be returned. Also, **cchReaderLen** is ignored if this value is TRUE (0x00000001).

Name	Value
FALSE	0x00000000
TRUE	0x00000001

cchReaderLen: The length of the string buffer specified on the **TS server** side. If `cchReaderLen` is set to `SCARD_AUTOALLOCATE` with a value of `0xFFFFFFFF`, a string of any length can be returned. Otherwise, the returned string **MUST NOT** exceed **cchReaderLen** characters in length, including any null characters. When the string to be returned exceeds **cchReaderLen** characters in length, including any null characters, [Status_Return.ReturnCode](#) **MUST** be set to `SCARD_E_INSUFFICIENT_BUFFER` (`0x80100008`). The **cchReaderLen** field **MUST** be ignored if **fmszReaderNamesIsNULL** is `TRUE` (`0x00000001`). Also, if **fmszReaderNamesIsNULL** is set to `FALSE` (`0x00000000`) but **cchReaderLen** is set to `0x00000000`, then the call **MUST** succeed, `Status_Return.cbAtrLen` **MUST** be set to the length of the data in bytes, and `Status_Return.pbAtr` **MUST** be set to `NULL`.

cbAtrLen: Unused. **MUST** be ignored upon receipt.

2.2.2.19 Transmit_Call

The `Transmit_Call` structure is used to send data to the **smart card** associated with a valid context.

```
typedef struct _Transmit_Call {
    REDIR_SCARDHANDLE hCard;
    SCardIO_Request ioSendPci;
    [range(0,66560)] unsigned long cbSendLength;
    [size_is(cbSendLength)] const byte* pbSendBuffer;
    [unique] SCardIO_Request* pioRecvPci;
    long fpbRecvBufferIsNULL;
    unsigned long cbRecvLength;
} Transmit_Call;
```

hCard: A handle, as specified in section [2.2.1.2](#).

ioSendPci: A packet specifying input header information as specified in section [2.2.1.8](#).

cbSendLength: The length, in bytes, of the **pbSendBuffer** field.

pbSendBuffer: The data to be written to the card. The format of the data is specific to an individual card. For more information about data formats, see [\[ISO/IEC-7816-4\]](#) sections 5 through 7.

pioRecvPci: If non-NULL, this field is an **SCardIO_Request** packet that is set up in the same way as the **ioSendPci** field and passed as the `pioRecvPci` parameter of the `Transmit` call. If the value of this is `NULL`, the caller is not requesting the **pioRecvPci** value to be returned.

fpbRecvBufferIsNULL: A Boolean value specifying whether the caller wants to retrieve the length of the data. **MUST** be set to `TRUE` (`0x00000001`) if the caller wants only to retrieve the length of the data; otherwise, it **MUST** be set to `FALSE` (`0x00000000`).

Name	Value
FALSE	0x00000000
TRUE	0x00000001

cbRecvLength: The maximum size of the buffer to be returned. **MUST** be ignored if **fpbRecvBufferIsNULL** is set to `TRUE` (`0x00000001`).

2.2.2.20 Control_Call

Normally, communication is to the **smart card** via the reader. However, in some cases, the ability to communicate directly with the **smart card reader** is requested. The Control_Call structure provides the ability to talk to the reader.

```
typedef struct _Control_Call {
    REDIR_SCARDHANDLE hCard;
    unsigned long dwControlCode;
    [range(0,66560)] unsigned long cbInBufferSize;
    [unique] [size_is(cbInBufferSize)] const byte *pvInBuffer;
    long fpvOutBufferIsNull;
    unsigned long cbOutBufferSize;
} Control_Call;
```

hCard: A handle, as specified in section [2.2.1.2](#).

dwControlCode: The control code for the operation. These values are specific to the hardware **device**. This protocol MUST NOT restrict or define any values for this control codes.

cbInBufferSize: The size in bytes of the **pvInBuffer** field.

pvInBuffer: A buffer that contains the data required to perform the operation. This field SHOULD be NULL if the **dwControlCode** field specifies an operation that does not require input data. Otherwise, this data is specific to the function being performed.

fpvOutBufferIsNull: A Boolean value specifying whether the caller wants to retrieve the length of the data. MUST be set to TRUE (0x00000001) if the caller wants only to retrieve the length of the data; otherwise, it MUST be set to FALSE (0x00000000).

Name	Value
FALSE	0x00000000
TRUE	0x00000001

cbOutBufferSize: The maximum size of the buffer to be returned. This field MUST be ignored if fpvOutBufferIsNull is set to TRUE (0x00000001).

2.2.2.21 GetAttrib_Call

The GetAttrib_Call structure is used to read **smart card reader** attributes.

```
typedef struct _GetAttrib_Call {
    REDIR_SCARDHANDLE hCard;
    unsigned long dwAttrId;
    long fpbAttrIsNull;
    unsigned long cbAttrLen;
} GetAttrib_Call;
```

hCard: A handle, as specified in section [2.2.1.2](#).

dwAttrId: An identifier for the attribute to get. For more information on defined attributes, see [\[PCSC3\]](#) section 3.1.2.

fpbAttrIsNull: A Boolean value specifying whether the caller wants to retrieve the length of the data. Set to FALSE (0x00000000) in order to allow the data to be returned. Set to TRUE (0x00000001) and only the length of the data will be returned.

Name	Value
FALSE	0x00000000
TRUE	0x00000001

cbAttrLen: The length of the buffer specified on the **TS Server** side. If **cbAttrLen** is set to SCARD_AUTOALLOCATE with a value of 0xFFFFFFFF then any buffer length can be returned. Otherwise, the returned buffer MUST NOT exceed **cbAttrLen** bytes in length. When the buffer to be returned exceeds **cbAttrLen** bytes in length, **GetAttrib_Return.ReturnCode** MUST be set to SCARD_E_INSUFFICIENT_BUFFER (0x80100008). The **cbAttrLen** field MUST be ignored if **fpbAttrIsNull** is set to TRUE (0x00000001). Also, if **fpbAttrIsNull** is set to FALSE (0x00000000) but **cbAttrLen** is set to 0x00000000, then the call MUST succeed, **GetAttrib_Return.cbAttrLen** MUST be set to the length of the data, in bytes, and **GetAttrib_Return.pbAttr** MUST be set to NULL.

2.2.2.22 SetAttrib_Call

The SetAttrib_Call structure allows users to set **smart card reader** attributes.

```
typedef struct _SetAttrib_Call {
    REDIR_SCARDHANDLE hCard;
    unsigned long dwAttrId;
    [range(0,65536)] unsigned long cbAttrLen;
    [size is(cbAttrLen)] const byte* pbAttr;
} SetAttrib_Call;
```

hCard: A handle, as specified in section [2.2.1.2](#).

dwAttrId: The identifier of the attribute to set. The values are write-only. For more information on possible values, see [\[PCSC3\]](#) section 3.1.2.

cbAttrLen: The size, in bytes, of the data corresponding to the **pbAttr** field.

pbAttr: A buffer that contains the attribute whose identifier is supplied in the **dwAttrId** field. The format is specific to the value being set.

2.2.2.23 LocateCardsByATRA_Call

The LocateCardsByATRA_Call structure returns information concerning the status of the **smart card** of interest (**ATR**).

```
typedef struct _LocateCardsByATRA_Call {
    REDIR_SCARDCONTEXT Context;
    [range(0,1000)] unsigned long cAtrs;
    [size is(cAtrs)] LocateCards_ATRMask* rgAttrMasks;
    [range(0,10)] unsigned long cReaders;
    [size is(cReaders)] ReaderStateA* rgReaderStates;
} LocateCardsByATRA_Call;
```

Context: A valid context, as specified in section [2.2.2.13](#).

cAtrs: The number of bytes in the **rgAttrMasks** field.

rgAttrMasks: An array of ATRs to match against currently inserted cards.

cReaders: The number of elements in the **rgReaderStates** field.

rgReaderStates: The states of the readers that the application is monitoring. The states reflect what the application determines to be the current states of the readers and that might differ from the actual states.

2.2.2.24 LocateCardsByATRW_Call

The LocateCardsByATRW_Call structure returns information concerning the status of the **smart card** of interest (**ATR**).

```
typedef struct LocateCardsByATRW Call {
    REDIR_SCARDCONTEXT Context;
    [range(0, 1000)] unsigned long cAtrs;
    [size_is(cAtrs)] LocateCards_ATRMask* rgAtrMasks;
    [range(0,10)] unsigned long cReaders;
    [size_is(cReaders)] ReaderStateW* rgReaderStates;
} LocateCardsByATRW_Call;
```

Context: A valid context, as specified in section [2.2.2.14](#).

cAtrs: The number of bytes in the **rgAtrMasks** field.

rgAtrMasks: An array of ATRs to match against currently inserted cards.

cReaders: The number of elements in the **rgReaderStates** field.

rgReaderStates: The states of the readers that the application is monitoring. The states reflects what the application believes is the current states of the readers and might differ from the actual states.

2.2.2.25 ReadCacheA_Call

The ReadCacheA_Call structure is used to obtain the card and reader information from the cache.

```
typedef struct _ReadCacheA_Call {
    [string] char* szLookupName;
    ReadCache_Common Common;
} ReadCacheA_Call;
```

szLookupName: An **ASCII** string containing the lookup name.

Common: Additional parameters for the Read Cache call (for additional information, see section [3.1.4.42](#)), as specified in section [2.2.1.9](#).

2.2.2.26 ReadCacheW_Call

The ReadCacheW_Call structure is used to obtain the card and reader information from the cache.

```
typedef struct _ReadCacheW_Call {
    [string] wchar_t* szLookupName;
    ReadCache_Common Common;
} ReadCacheW_Call;
```

szLookupName: A **Unicode string** containing the lookup name.

Common: Additional parameters for the Read Cache call (for additional information, see section [3.1.4.43](#)), as specified in section [2.2.1.9](#).

2.2.2.27 WriteCacheA_Call

The WriteCacheA_Call structure is used to write the card and reader information to the cache.

```
typedef struct _WriteCacheA_Call {
    [string] char* szLookupName;
    WriteCache_Common Common;
} WriteCacheA_Call;
```

szLookupName: An **ASCII** string containing the lookup name.

Common: Additional parameters for the Write Cache call (for more information, see section [3.1.4.44](#)), as specified in section [2.2.1.10](#).

2.2.2.28 WriteCacheW_Call

The WriteCacheW_Call structure is used to write the card and reader information to the cache.

```
typedef struct _WriteCacheW_Call {
    [string] wchar_t* szLookupName;
    WriteCache_Common Common;
} WriteCacheW_Call;
```

szLookupName: An **Unicode string** containing the lookup name.

Common: Additional parameters for the Write Cache call (for more information, see section [2.2.1.10](#)).

2.2.2.29 GetTransmitCount_Call

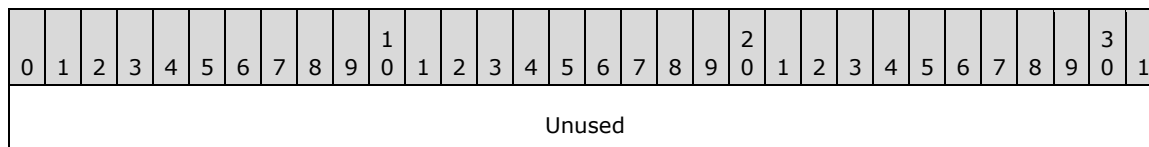
The GetTransmitCount_Call structure is used to obtain the number of transmit calls sent to the card since the reader was introduced.

```
typedef struct _GetTransmitCount_Call {
    REDIR SCARDHANDLE hCard;
} GetTransmitCount_Call;
```

hCard: A handle, as specified in section [2.2.1.2](#).

2.2.2.30 ScardAccessStartedEvent_Call

ScardAccessStartedEvent_Call is just an uninitialized 4-byte buffer that is sent as the **IOCTL** requires a payload. There is no corresponding serialized structure for this call.



Unused (4 bytes): The field is uninitialized. It SHOULD contain random data and MUST be ignored on receipt.

2.2.2.31 GetReaderIcon_Call

The GetReaderIcon_Call structure is used to obtain the reader icon from the smart card reader's INF file.

```
typedef struct GetReaderIcon_Call {
    REDIR_SCARDCONTEXT Context;
    [string] wchar_t* szReaderName;
} GetReaderIcon_Call;
```

Context: A valid context, as specified in section [2.2.1.1](#).

szReaderName: A **Unicode string** containing the reader name.

2.2.2.32 GetDeviceTypeId_Call

The GetDeviceTypeId_Call structure is used to obtain the reader's device ID from the smart card reader's INF file.

```
typedef struct _GetDeviceTypeId_Call {
    REDIR_SCARDCONTEXT Context;
    [string] wchar_t* szReaderName;
} GetDeviceTypeId_Call;
```

Context: A valid context, as specified in section [2.2.1.1](#).

szReaderName: A **Unicode string** containing the lookup name.

2.2.3 TS Client-Generated Structures

These structures originate from the client process and compose part of the **return packet**. If the **ReturnCode** field of the structure is nonzero, all other fields MUST be set to zero and MUST be ignored on receipt.

2.2.3.1 ReadCache_Return

The ReadCache_Return structure is used to obtain the data that corresponds to the lookup item requested in ReadCacheA_Call as specified in section [2.2.2.25](#), or ReadCacheW_Call as specified in section [2.2.2.26](#). For more call information, see sections [3.1.4.42](#) and [3.1.4.43](#).

```
typedef struct _ReadCache_Return {
    long ReturnCode;
    [range(0,65536)] unsigned long cbDataLen;
    [unique] [size_is(cbDataLen)] byte *pbData;
} ReadCache_Return;
```

ReturnCode: **HRESULT** or Win32 Error codes. Zero indicates success; any other value indicates failure.

cbDataLen: The number of bytes in the **pbData** field.

pbData: The value of the look up item.

2.2.3.2 EstablishContext_Return

The EstablishContext_Return structure is used to provide a response to an Establish Context call (for more information, see section [3.1.4.1.](#))

```
typedef struct EstablishContext_Return {
    long ReturnCode;
    REDIR_SCARDCONTEXT Context;
} EstablishContext_Return;
```

ReturnCode: **HRESULT** or Win32 Error code. Zero indicates success; any other value indicates failure.

Context: A valid context, as specified in section [2.2.1.1.](#)

2.2.3.3 Long_Return

The Long_Return structure is used for return codes for calls that return only a long value.

```
typedef struct _long_Return {
    long ReturnCode;
} long_Return;
```

ReturnCode: **HRESULT** or Win32 Error code. Zero indicates success; any other value indicates failure.

2.2.3.4 ListReaderGroups_Return and ListReaders_Return

The ListReaderGroups_Return and ListReaders_Return structures are used to obtain results for those calls that return a **multistring**, in addition to a long return value. For more information, see sections [3.1.4.5](#), [3.1.4.6](#), [3.1.4.7](#), and [3.1.4.8](#).

```
typedef struct _longAndMultiString_Return {
    long ReturnCode;
    [range(0,65536)] unsigned long cBytes;
    [unique] [size_is(cBytes)] byte *msz;
} ListReaderGroups_Return, ListReaders_Return;
```

ReturnCode: **HRESULT** or Win32 Error code. The value returned from the **Smart Card** Redirection call.

cBytes: The number of bytes in the **msz** array field.

msz: The meaning of this field is specific to the context (**IOCTL**) in which it is used.

Value	Meaning
SCARD_IOCTL_LISTREADERSA 0x00090028	ASCII multistring of readers on the system.
SCARD_IOCTL_LISTREADERSW 0x0009002C	Unicode multistring of readers on the system.
SCARD_IOCTL_LISTREADERGROUPSA 0x00090020	ASCII multistring of reader groups on the system.

Value	Meaning
SCARD_IOCTL_LISTREADERGROUPSW 0x00090024	Unicode multistring of reader groups on the system.

2.2.3.5 LocateCards_Return and GetStatusChange_Return

The LocateCards_Return and GetStatusChange_Return structures are used to obtain the results on those calls that return updated reader state information. (for more information, see sections [3.1.4.21](#), [3.1.4.22](#), [3.1.4.23](#), [3.1.4.24](#), [3.1.4.25](#), and [3.1.4.26](#)).

```
typedef struct _LocateCards_Return {
    long ReturnCode;
    [range(0, 10)] unsigned long cReaders;
    [size_is(cReaders)] ReaderState_Return *rgReaderStates;
} LocateCards_Return,
  GetStatusChange_Return;
```

ReturnCode: **HRESULT** or Win32 Error code. Zero indicates success; any other value indicates failure.

cReaders: The number of elements in the **rgReaderStates** field.

rgReaderStates: The current states of the readers being watched.

2.2.3.6 Control_Return

The Control_Return structure is used to obtain information from a [Control_Call](#) (for more information, see section [3.1.4.37](#)).

```
typedef struct _Control_Return {
    long ReturnCode;
    [range(0, 66560)] unsigned long cbOutBufferSize;
    [unique] [size_is(cbOutBufferSize)] byte *pvOutBuffer;
} Control_Return;
```

ReturnCode: **HRESULT** or Win32 Error code. Zero indicates success; any other value indicates failure.

cbOutBufferSize: The number of bytes in the **pvOutBuffer** field.

pvOutBuffer: Contains the return data specific to the value of the Control_Call structure.

2.2.3.7 Reconnect_Return

The Reconnect_Return structure is used to obtain return information from a Reconnect call (for more information, see section [3.1.4.36](#)).

```
typedef struct Reconnect_Return {
    long ReturnCode;
    unsigned long dwActiveProtocol;
} Reconnect_Return;
```

ReturnCode: **HRESULT** or Win32 Error code. Zero indicates success; any other value indicates failure.

dwActiveProtocol: A flag that indicates the established active protocol. For more information on acceptable values, see section [2.2.5](#).

2.2.3.8 Connect_Return

The Connect_Return structure is used to obtain return information from a Connect call (for more information, see sections [3.1.4.28](#) and [3.1.4.29](#)).

```
typedef struct _Connect_Return {
    long ReturnCode;
    REDIR_SCARDHANDLE hCard;
    unsigned long dwActiveProtocol;
} Connect_Return;
```

ReturnCode: **HRESULT** or Win32 Error code. Zero indicates success; any other value indicates failure.

hCard: A handle, as specified in section [2.2.1.2](#).

dwActiveProtocol: A value that indicates the active **smart card** transmission protocol. Possible values are specified in section [2.2.5](#).

2.2.3.9 State_Return

The State_Return structure defines return information about the state of the **smart card reader** (for more information, see section [3.1.4.40](#)).

```
typedef struct _State_Return {
    long ReturnCode;
    unsigned long dwState;
    unsigned long dwProtocol;
    [range(0,36)] unsigned long cbAtrLen;
    [unique] [size_is(cbAtrLen)] byte *rgAtr;
} State_Return;
```

ReturnCode: **HRESULT** or Win32 Error code. Zero indicates success; any other value indicates failure.

dwState: The current state of the **smart card** in the Reader. Possible values are specified in section [2.2.4](#).

dwProtocol: The current protocol, if any. Possible values are specified in section [2.2.5](#).

cbAtrLen: The number of bytes in the **rgAtr** field.

rgAtr: A pointer to a buffer that receives the **ATR** string from the currently inserted card, if available.

2.2.3.10 Status_Return

The Status_Return structure defines return information about the status of the **smart card reader** (for more information, see sections [3.1.4.33](#) and [3.1.4.34](#)).

```
typedef struct _Status_Return {
    long ReturnCode;
```

```

    [range(0,65536)] unsigned long cBytes;
    [unique] [size_is(cBytes)] byte *mszReaderNames;
    unsigned long dwState;
    unsigned long dwProtocol;
    byte pbAtr[32];
    [range(0,32)] unsigned long cbAtrLen;
} Status_Return;

```

ReturnCode: **HRESULT** or Win32 Error code. Zero indicates success; any other value indicates failure.

cBytes: The number of bytes in the **mszReaderNames** field.

mszReaderNames: A **multistring** containing the names that the reader is known by. The value of this is dependent on the context (**IOCTL**) that it is used.

Value	Meaning
SCARD_IOCTL_STATUSA 0x000900C8	ASCII multistring
SCARD_IOCTL_STATUSW 0x000900CC	Unicode multistring

dwState: The current state of the **smart card** in the reader. Possible values are specified in section [2.2.4](#).

dwProtocol: The current protocol, if any. Possible values are specified in section [2.2.5](#).

pbAtr: A pointer to a buffer that receives the **ATR** string from the currently inserted card, if available.

cbAtrLen: The number of bytes in the ATR string.

2.2.3.11 Transmit_Return

The Transmit_Return structure defines return information from a **smart card** after a Transmit call (for more information, see section [3.1.4.35](#)).

```

typedef struct _Transmit_Return {
    long ReturnCode;
    [unique] SCardIO Request *pioRecvPci;
    [range(0, 66560)] unsigned long cbRecvLength;
    [unique] [size_is(cbRecvLength)] byte *pbRecvBuffer;
} Transmit_Return;

```

ReturnCode: **HRESULT** or Win32 Error code. Zero indicates success; any other value indicates failure.

pioRecvPci: The protocol header structure for the instruction, followed by a buffer in which to receive any returned protocol control information (PCI) that is specific to the protocol in use. If this field is NULL, a protocol header MUST NOT be returned.

cbRecvLength: The size, in bytes, of the **pbRecvBuffer** field.

pbRecvBuffer: The data returned from the card.

2.2.3.12 GetAttrib_Return

The GetAttrib_Return structure defines attribute information from a **smart card reader** (for more information, see section [3.1.4.38](#)).

```
typedef struct GetAttrib_Return {
    long ReturnCode;
    [range(0,65536)] unsigned long cbAttrLen;
    [unique] [size_is(cbAttrLen)] byte *pbAttr;
} GetAttrib_Return;
```

ReturnCode: **HRESULT** or Win32 Error code. Zero indicates success; any other value indicates failure.

cbAttrLen: The number of bytes in the **pbAttr** field.

pbAttr: A pointer to an array that contains any values returned from the corresponding call.

2.2.3.13 GetTransmitCount_Return

The GetTransmitCount_Return structure defines the number of transmit calls that were performed on the **smart card reader** (for more information, see section [3.1.4.41](#)).

```
typedef struct _GetTransmitCount_Return {
    long ReturnCode;
    unsigned long cTransmitCount;
} GetTransmitCount_Return;
```

ReturnCode: **HRESULT** or Win32 Error code. Zero indicates success; any other value indicates failure.

cTransmitCount: The field specifies the number of successful Transmit calls (for more information, see section [3.1.4.35](#)) performed on the reader since it was introduced to the system.

2.2.3.14 GetReaderIcon_Return

The GetReaderIcon_Return structure is used to obtain the data that corresponds to the lookup item requested in the **GetReaderIcon_Call** as specified in section [2.2.2.31](#). For more information, see section [3.1.4.48](#).

```
typedef struct _GetReaderIcon_Return {
    long ReturnCode;
    [range(0, 4194304)] unsigned long cbDataLen;
    [unique, size_is(cbDataLen)] byte* pbData;
} GetReaderIcon_Return;
```

ReturnCode: HRESULT or Win32 error code. Zero indicates success; any other value indicates failure.

cbDataLen: The number of bytes in the **pbData** field.

pbData: The value of the lookup item.

2.2.3.15 GetDeviceTypeId_Return

The GetDeviceTypeId_Return structure is used to obtain the data that corresponds to the lookup item requested in **GetDeviceTypeId_Call** as specified in section [2.2.2.32](#). For more information, see section [3.1.4.47](#).

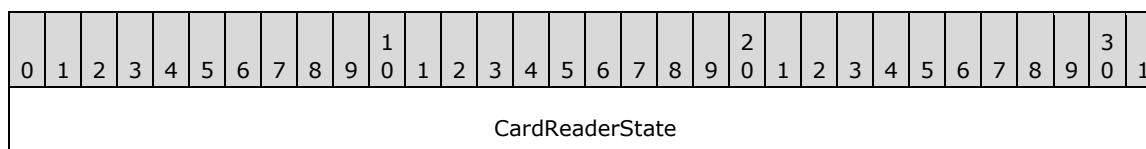
```
typedef struct _GetDeviceTypeId_Return {  
    long ReturnCode;  
    unsigned long dwDeviceId;  
} GetDeviceTypeId_Return;
```

ReturnCode: HRESULT or Win32 error code. Zero indicates success; any other value indicates failure.

dwDeviceId: The value of the lookup item.

2.2.4 Card/Reader State

The following represents the current state of the smart card reader according to **Smart Cards for Windows**.

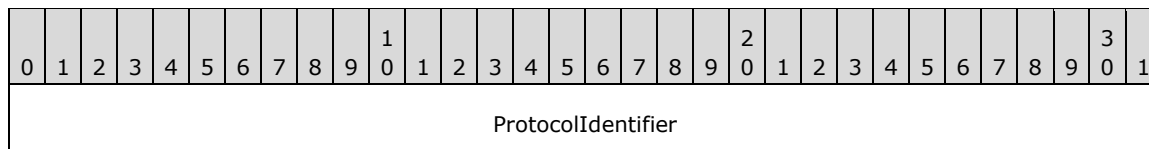


CardReaderState (4 bytes): One of the following values.

Value	Meaning
SCARD_UNKNOWN 0x00000000	The current state of the reader is unknown.
SCARD_ABSENT 0x00000001	There is no card in the reader.
SCARD_PRESENT 0x00000002	There is a card in the reader but it has not been moved into position for use.
SCARD_SWALLOWED 0x00000003	There is a card in the reader in position for use. The card is not powered.
SCARD_POWERED 0x00000004	There is power being applied to the card but the mode of the card is unknown.
SCARD_NEGOTIABLE 0x00000005	The card has been reset and is awaiting PTS negotiation.
SCARD_SPECIFICMODE 0x00000006	The card has been reset and specific communication protocols have been established.

2.2.5 Protocol Identifier

A Protocol Identifier.



ProtocolIdentifier (4 bytes): This field MUST have a value from Table A which is logically OR'ed with a value from Table B.

Table A

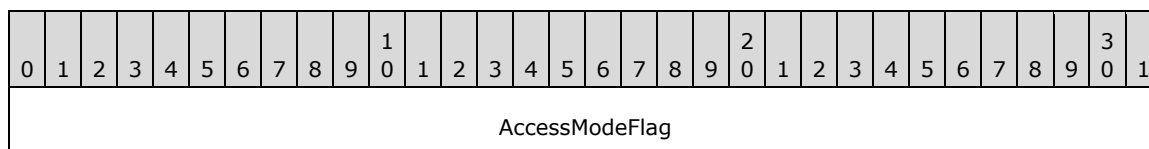
Value	Meaning
SCARD_PROTOCOL_UNDEFINED 0x00000000	No transmission protocol is active.
SCARD_PROTOCOL_T0 0x00000001	Transmission protocol 0 (T=0) is active. It is the asynchronous half-duplex character transmission protocol.
SCARD_PROTOCOL_T1 0x00000002	Transmission protocol 1 (T=1) is active. It is the asynchronous half-duplex block transmission protocol.
SCARD_PROTOCOL_Tx 0x00000003	Bitwise OR combination of both of the two International Standards Organization (ISO) transmission protocols SCARD_PROTOCOL_T0 and SCARD_PROTOCOL_T1. This value can be used as a bitmask.
SCARD_PROTOCOL_RAW 0x00010000	Transmission protocol raw is active. The data from the smart card is raw and does not conform to any transmission protocol.

Table B

Value	Meaning
SCARD_PROTOCOL_DEFAULT 0x80000000	A bitwise OR with this value forces the use of the default transmission parameters and card clock frequency.
SCARD_PROTOCOL_OPTIMAL 0x00000000	Optimal transmission parameters and card clock frequency MUST be used. This flag is considered the default. No actual value is defined for this flag; it is there for compatibility with PCSC5 section 3.1.3.

2.2.6 Access Mode Flags

Access mode flags provide possible values for applications to connect to the **smart card**.



AccessModeFlag (4 bytes): One of the following possible values:

Value	Meaning
SCARD_SHARE_EXCLUSIVE 0x00000001	This application is not willing to share this smart card with other applications.
SCARD_SHARE_SHARED 0x00000002	This application is willing to share this smart card with other applications.

Value	Meaning
SCARD_SHARE_DIRECT 0x00000003	This application demands direct control of the smart card reader; therefore, it is not available to other applications.

2.2.7 Reader State

The Reader State packet has a sub-structure as shown in the following table.

0	1	2	3	4	5	6	7	8	9	10	11	12	13	14	15	16	17	18	19	20	21	22	23	24	25	26	27	28	29	30	31
Reader State																															

Reader State (4 bytes): Both the **dwCurrentState** field and the **dwEventState** field, found in the [ReaderState Common Call \(section 2.2.1.5\)](#) and [ReaderState Return \(section 2.2.1.11\)](#) structures, consist of the following two subfields.

0	1	2	3	4	5	6	7	8	9	10	11	12	13	14	15	16	17	18	19	20	21	22	23	24	25	26	27	28	29	30	31
Count																State															

Count (2 bytes): The contents of this field depend on the value of the associated **reader name**. If the reader name (for more information, see sections [2.2.1.6](#) and [2.2.1.7](#) for the **szReader** field) is `\\?PnP?\Notification`, then **Count** is a count of the number of readers installed on the system and all bits except SCARD_STATE_CHANGED in **State** MUST be zero. Otherwise, **Count** is a count of the number of times a card has been inserted and/or removed from the **smart card reader** being monitored.

State (2 bytes): The state of a reader. The value MUST be according to the following table.

Value	Meaning
SCARD_STATE_UNAWARE 0x0000	The application requires the current state but does not know it. The use of this value results in an immediate return from state transition monitoring services.
SCARD_STATE_IGNORE 0x0001	The application requested that this reader be ignored. If this bit is set in the dwCurrentState field of a ReaderState_Common_Call structure, other bits MUST NOT be set in the dwEventState field of the corresponding ReaderState_Return structure.
SCARD_STATE_CHANGED 0x0002	There is a difference between the state believed by the application, and the state known by Smart Cards for Windows.
SCARD_STATE_UNKNOWN 0x0004	The reader name is not recognized by Smart Cards for Windows. If this bit is set in the dwEventState field of the ReaderState_Return structure, both SCARD_STATE_IGNORE and SCARD_STATE_CHANGED values MUST be set. This bit SHOULD NOT be set in the dwCurrentState field of a ReaderState_Common_Call structure.
SCARD_STATE_UNAVAILABLE 0x0008	The actual state of this reader is not available. If this bit is set, all of the following bits MUST be clear.

Value	Meaning
SCARD_STATE_EMPTY 0x0010	There is no card in the reader. If this bit is set, all of the following bits MUST be clear.
SCARD_STATE_PRESENT 0x0020	There is a card in the reader.
SCARD_STATE_ATRMATCH 0x0040	There is a card in the reader with an ATR that matches one of the target cards. If this bit is set, SCARD_STATE_PRESENT MUST be set.
SCARD_STATE_EXCLUSIVE 0x0080	The card in the reader is allocated for exclusive use by another application. If this bit is set, SCARD_STATE_PRESENT MUST be set.
SCARD_STATE_INUSE 0x0100	The card in the reader is in use by one or more other applications, but it can be connected to in shared mode. If this bit is set, SCARD_STATE_PRESENT MUST be set.
SCARD_STATE_MUTE 0x0200	The card in the reader is unresponsive or is not supported by the reader or software.
SCARD_STATE_UNPOWERED 0x0400	This implies that the card in the reader has not been turned on.

2.2.8 Return Code

The following Smart Card Facility Codes for Windows-specific return codes MAY be returned by the **protocol server** to the **protocol client** and are of the data type NTSTATUS, with the **sev** field set to STATUS_SEVERITY_WARNING (0x2) and the reserved bit (**N**) set to 0.

0	1	2	3	4	5	6	7	8	9	10	11	12	13	14	15	16	17	18	19	20	21	22	23	24	25	26	27	28	29	30	31
ReturnCode																															

ReturnCode (4 bytes): One of the following return codes:

Value	Meaning
SCARD_S_SUCCESS 0x00000000	No error has occurred.
SCARD_F_INTERNAL_ERROR 0x80100001	An internal consistency check failed.
SCARD_E_CANCELLED 0x80100002	The action was canceled by a Cancel request.
SCARD_E_INVALID_HANDLE 0x80100003	The supplied handle was invalid.
SCARD_E_INVALID_PARAMETER 0x80100004	One or more of the supplied parameters could not be properly interpreted.
SCARD_E_INVALID_TARGET	Registry startup information is missing or invalid.

Value	Meaning
0x80100005	
SCARD_E_NO_MEMORY 0x80100006	Not enough memory available to complete this command.
SCARD_F_WAITED_TOO_LONG 0x80100007	An internal consistency timer has expired.
SCARD_E_INSUFFICIENT_BUFFER 0x80100008	The data buffer to receive returned data is too small for the returned data.
SCARD_E_UNKNOWN_READER 0x80100009	The specified reader name is not recognized.
SCARD_E_TIMEOUT 0x8010000A	The user-specified time-out value has expired.
SCARD_E_SHARING_VIOLATION 0x8010000B	The smart card cannot be accessed because of other connections outstanding.
SCARD_E_NO_SMARTCARD 0x8010000C	The operation requires a smart card, but no smart card is currently in the device.
SCARD_E_UNKNOWN_CARD 0x8010000D	The specified smart card name is not recognized.
SCARD_E_CANT_DISPOSE 0x8010000E	The system could not dispose of the media in the requested manner.
SCARD_E_PROTO_MISMATCH 0x8010000F	The requested protocols are incompatible with the protocol currently in use with the smart card.
SCARD_E_NOT_READY 0x80100010	The reader or smart card is not ready to accept commands.
SCARD_E_INVALID_VALUE 0x80100011	One or more of the supplied parameters values could not be properly interpreted.
SCARD_E_SYSTEM_CANCELLED 0x80100012	The action was canceled by the system, presumably to log off or shut down.
SCARD_F_COMM_ERROR 0x80100013	An internal communications error has been detected.
SCARD_F_UNKNOWN_ERROR 0x80100014	An internal error has been detected, but the source is unknown.
SCARD_E_INVALID_ATR 0x80100015	An ATR obtained from the registry is not a valid ATR string.
SCARD_E_NOT_TRANSACTED 0x80100016	An attempt was made to end a non-existent transaction.
SCARD_E_READER_UNAVAILABLE 0x80100017	The specified reader is not currently available for use.
SCARD_P_SHUTDOWN	The operation has been stopped to allow the server application

Value	Meaning
0x80100018	to exit.
SCARD_E_PCI_TOO_SMALL 0x80100019	The PCI Receive buffer was too small.
SCARD_E_ICC_INSTALLATION 0x80100020	No primary provider can be found for the smart card.
SCARD_E_ICC_CREATEORDER 0x80100021	The requested order of object creation is not supported.
SCARD_E_UNSUPPORTED_FEATURE 0x80100022	This smart card does not support the requested feature.
SCARD_E_DIR_NOT_FOUND 0x80100023	The specified directory does not exist in the smart card.
SCARD_E_FILE_NOT_FOUND 0x80100024	The specified file does not exist in the smart card.
SCARD_E_NO_DIR 0x80100025	The supplied path does not represent a smart card directory.
SCARD_E_READER_UNSUPPORTED 0x8010001A	The reader device driver does not meet minimal requirements for support.
SCARD_E_DUPLICATE_READER 0x8010001B	The reader device driver did not produce a unique reader name.
SCARD_E_CARD_UNSUPPORTED 0x8010001C	The smart card does not meet minimal requirements for support.
SCARD_E_NO_SERVICE 0x8010001D	Smart Cards for Windows is not running.
SCARD_E_SERVICE_STOPPED 0x8010001E	Smart Cards for Windows has shut down.
SCARD_E_UNEXPECTED 0x8010001F	An unexpected card error has occurred.
SCARD_E_NO_FILE 0x80100026	The supplied path does not represent a smart card file.
SCARD_E_NO_ACCESS 0x80100027	Access is denied to this file.
SCARD_E_WRITE_TOO_MANY 0x80100028	The smart card does not have enough memory to store the information.
SCARD_E_BAD_SEEK 0x80100029	There was an error trying to set the smart card file object pointer.
SCARD_E_INVALID_CHV 0x8010002A	The supplied PIN is incorrect.
SCARD_E_UNKNOWN_RES_MSG	An unrecognized error code was returned from a layered

Value	Meaning
0x8010002B	component.
SCARD_E_NO_SUCH_CERTIFICATE 0x8010002C	The requested certificate does not exist.
SCARD_E_CERTIFICATE_UNAVAILABLE 0x8010002D	The requested certificate could not be obtained.
SCARD_E_NO_READERS_AVAILABLE 0x8010002E	Cannot find a smart card reader.
SCARD_E_COMM_DATA_LOST 0x8010002F	A communications error with the smart card has been detected. Retry the operation.
SCARD_E_NO_KEY_CONTAINER 0x80100030	The requested key container does not exist.
SCARD_E_SERVER_TOO_BUSY 0x80100031	Smart Cards for Windows is too busy to complete this operation.
SCARD_E_PIN_CACHE_EXPIRED 0x80100032	The smart card PIN cache has expired.
SCARD_E_NO_PIN_CACHE 0x80100033	The smart card PIN cannot be cached.
SCARD_E_READ_ONLY_CARD 0x80100034	The smart card is read-only and cannot be written to.
SCARD_W_UNSUPPORTED_CARD 0x80100065	The reader cannot communicate with the smart card due to ATR configuration conflicts.
SCARD_W_UNRESPONSIVE_CARD 0x80100066	The smart card is not responding to a reset.
SCARD_W_UNPOWERED_CARD 0x80100067	Power has been removed from the smart card, so that further communication is impossible.
SCARD_W_RESET_CARD 0x80100068	The smart card has been reset, so any shared state information is invalid.
SCARD_W_REMOVED_CARD 0x80100069	The smart card has been removed, so that further communication is impossible.
SCARD_W_SECURITY_VIOLATION 0x8010006A	Access was denied because of a security violation.
SCARD_W_WRONG_CHV 0x8010006B	The card cannot be accessed because the wrong PIN was presented.
SCARD_W_CHV_BLOCKED 0x8010006C	The card cannot be accessed because the maximum number of PIN entry attempts has been reached.
SCARD_W_EOF 0x8010006D	The end of the smart card file has been reached.
SCARD_W_CANCELLED_BY_USER	The action was canceled by the user.

Value	Meaning
0x8010006E	
SCARD_W_CARD_NOT_AUTHENTICATED 0x8010006F	No PIN was presented to the smart card.
SCARD_W_CACHE_ITEM_NOT_FOUND 0x80100070	The requested item could not be found in the cache.
SCARD_W_CACHE_ITEM_STALE 0x80100071	The requested cache item is too old and was deleted from the cache.
SCARD_W_CACHE_ITEM_TOO_BIG 0x80100072	The new cache item exceeds the maximum per-item size defined for the cache.

3 Protocol Details

The following sections specify details of the Remote Desktop Protocol: Smart Card Virtual Channel Extension, including abstract data models, interface method syntax, and message processing rules.

3.1 Protocol Server Details

3.1.1 Abstract Data Model

This section describes a conceptual model of a possible data organization that an implementation maintains to participate in this protocol. The described organization is provided to facilitate the explanation of how the protocol behaves. This document does not mandate that implementations adhere to this model provided that their external behavior is consistent with that described in this document.

The **protocol server** relies on an implementation of **Smart Cards for Windows**.

The following state **MUST** be kept by this protocol:

dwDeviceId: The **device** id assigned by Remote Desktop Protocol: File System Virtual Channel Extension that identifies this protocol.

rgSCardContextList: List of contexts opened by the protocol server.

3.1.2 Timers

None.

3.1.3 Initialization

Initialization is triggered by the Remote Desktop Protocol: File System Virtual Channel Extension when it enumerates all pre-logon devices. At this time, **TS client** initialization is performed.

If the **TS server operating system version** is earlier than 5.1, the device is not announced to the TS server.

The **dwDeviceId** field **MUST** be set to the device Id selected by Remote Desktop Protocol: File System Virtual Channel Extension, and **rgSCardContextList** **MUST** be set to the empty list.

3.1.4 Message Processing Events and Sequencing Rules

Only messages of type DR_CONTROL_REQ and DR_CONTROL_RSP (as specified in [\[MS-RDPEFS\]](#) sections 2.2.1.4.5 and 2.2.1.5.5, respectively) are valid for this protocol. All other messages **MUST** be processed according to the Remote Desktop Protocol: File System Virtual Channel Extension.

Only the control codes specified in the **IOCTL** Processing Rules in the following table are valid. Invalid packets **MUST** be dropped without a reply.

Function number	Value for IoControlCode	IRP_MJ_DEVICE_CONTROL request	Input packet, Output packet
5	0x00090014	SCARD_IOCTL_ESTABLISHCONTEXT	EstablishContext_Call (section 2.2.2.1) , EstablishContext_Return (section 2.2.3.2)

Function number	Value for IoControlCode	IRP_MJ_DEVICE_CONTROL request	Input packet, Output packet
6	0x00090018	SCARD_IOCTL_RELEASECONTEXT	Context_Call (section 2.2.2.2) , Long_Return (section 2.2.3.3)
7	0x0009001C	SCARD_IOCTL_ISVALIDCONTEXT	Context_Call (section 2.2.2.2), Long_Return (section 2.2.3.3)
8	0x00090020	SCARD_IOCTL_LISTREADERGROUPSA	ListReaderGroups_Call (section 2.2.2.3) , ListReaderGroups_Return (section 2.2.3.4)
9	0x00090024	SCARD_IOCTL_LISTREADERGROUPSW	ListReaderGroups_Call (section 2.2.2.3), ListReaderGroups_Return (section 2.2.3.4)
10	0x00090028	SCARD_IOCTL_LISTREADERSA	ListReaders_Call (section 2.2.2.4) , ListReaders_Return (section 2.2.3.4)
11	0x0009002C	SCARD_IOCTL_LISTREADERSW	ListReaders_Call (section 2.2.2.4), ListReaders_Return (section 2.2.3.4)
20	0x00090050	SCARD_IOCTL_INTRODUCEREADERGROUPA	ContextAndStringA_Call (section 2.2.2.5) , Long_Return (section 2.2.3.3)
21	0x00090054	SCARD_IOCTL_INTRODUCEREADERGROUPW	ContextAndStringW_Call (section 2.2.2.6) , Long_Return (section 2.2.3.3)
22	0x00090058	SCARD_IOCTL_FORGETREADERGROUPA	ContextAndStringA_Call (section 2.2.2.5), Long_Return (section 2.2.3.3)
23	0x0009005C	SCARD_IOCTL_FORGETREADERGROUPW	ContextAndStringW_Call (section 2.2.2.6), Long_Return (section 2.2.3.3)
24	0x00090060	SCARD_IOCTL_INTRODUCEREADERA	ContextAndTwoStringA_Call (section 2.2.2.7) , Long_Return (section 2.2.3.3)
25	0x00090064	SCARD_IOCTL_INTRODUCEREADERW	ContextAndTwoStringW_Call (section 2.2.2.8) , Long_Return (section 2.2.3.3)
26	0x00090068	SCARD_IOCTL_FORGETREADERA	ContextAndStringA_Call (section 2.2.2.5), Long_Return (section 2.2.3.3)
27	0x0009006C	SCARD_IOCTL_FORGETREADERW	ContextAndStringW_Call (section 2.2.2.6), Long_Return (section 2.2.3.3)
28	0x00090070	SCARD_IOCTL_ADDREADERTOGROUPA	ContextAndTwoStringA_Call (section 2.2.2.7), Long_Return (section 2.2.3.3)
29	0x00090074	SCARD_IOCTL_ADDREADERTOGROUPW	ContextAndTwoStringW_Call (section 2.2.2.8), Long_Return (section 2.2.3.3)
30	0x00090078	SCARD_IOCTL_REMOVEREADERFROMGROUPA	ContextAndTwoStringA_Call (section 2.2.2.7), Long_Return (section 2.2.3.3)
31	0x0009007C	SCARD_IOCTL_REMOVEREADERFROMGROUPW	ContextAndTwoStringW_Call (section 2.2.2.8), Long_Return (section 2.2.3.3)
38	0x00090098	SCARD_IOCTL_LOCATECARDSA	LocateCardsA_Call (section 2.2.2.9) , LocateCards_Return (section 2.2.3.5)
39	0x0009009C	SCARD_IOCTL_LOCATECARDSW	LocateCardsW_Call (section 2.2.2.10) , LocateCards_Return (section 2.2.3.5)

Function number	Value for IoControlCode	IRP_MJ_DEVICE_CONTROL request	Input packet, Output packet
40	0x000900A0	SCARD_IOCTL_GETSTATUSCHANGEA	GetStatusChangeA Call (section 2.2.2.11) , GetStatusChange_Return (section 2.2.3.5)
41	0x000900A4	SCARD_IOCTL_GETSTATUSCHANGEW	GetStatusChangeW Call (section 2.2.2.12) , GetStatusChange_Return (section 2.2.3.5)
42	0x000900A8	SCARD_IOCTL_CANCEL	Context_Call (section 2.2.2.2), Long_Return (section 2.2.3.3)
43	0x000900AC	SCARD_IOCTL_CONNECTA	ConnectA Call (section 2.2.2.13) , Connect_Return (section 2.2.3.8)
44	0x000900B0	SCARD_IOCTL_CONNECTW	ConnectW Call (section 2.2.2.14) , Connect_Return (section 2.2.3.8)
45	0x000900B4	SCARD_IOCTL_RECONNECT	Reconnect Call (section 2.2.2.15) , Reconnect_Return (section 2.2.3.7)
46	0x000900B8	SCARD_IOCTL_DISCONNECT	HCardAndDisposition Call (section 2.2.2.16) , Long_Return (section 2.2.3.3)
47	0x000900BC	SCARD_IOCTL_BEGINTRANSACTION	HCardAndDisposition_Call (section 2.2.2.16), Long_Return (section 2.2.3.3)
48	0x000900C0	SCARD_IOCTL_ENDTRANSACTION	HCardAndDisposition_Call (section 2.2.2.16), Long_Return (section 2.2.3.3)
49	0x000900C4	SCARD_IOCTL_STATE	State Call (section 2.2.2.17) , State_Return (section 2.2.3.9)
50	0x000900C8	SCARD_IOCTL_STATUSA	Status Call (section 2.2.2.18) , Status_Return (section 2.2.3.10)
51	0x000900CC	SCARD_IOCTL_STATUSW	Status_Call (section 2.2.2.18), Status_Return (section 2.2.3.10)
52	0x000900D0	SCARD_IOCTL_TRANSMIT	Transmit Call (section 2.2.2.19) , Transmit_Return (section 2.2.3.11)
53	0x000900D4	SCARD_IOCTL_CONTROL	Control Call (section 2.2.2.20) , Control_Return (section 2.2.3.6)
54	0x000900D8	SCARD_IOCTL_GETATTRIB	GetAttrib Call (section 2.2.2.21) , GetAttrib_Return (section 2.2.3.12)
55	0x000900DC	SCARD_IOCTL_SETATTRIB	SetAttrib Call (section 2.2.2.22) , Long_Return (section 2.2.3.3)
56	0x000900E0	SCARD_IOCTL_ACCESSSTARTEDEVENT	ScardAccessStartedEvent Call (section 2.2.2.30) , Long_Return (section 2.2.3.3)
57	0x000900E4	SCARD_IOCTL_RELEASESTARTEDEVENT	Not used.
58	0x000900E8	SCARD_IOCTL_LOCATECARDSBYATRA	LocateCardsByATRA Call (section 2.2.2.23) , LocateCards_Return (section 2.2.3.5)
59	0x000900EC	SCARD_IOCTL_LOCATECARDSBYATRW	LocateCardsByATRW Call (section 2.2.2.24)

Function number	Value for IoControlCode	IRP_MJ_DEVICE_CONTROL request	Input packet, Output packet
			4), LocateCards_Return (section 2.2.3.5)
60	0x000900F0	SCARD_IOCTL_READCACHEA	ReadCacheA_Call (section 2.2.2.25) , ReadCache_Return (section 2.2.3.1)
61	0x000900F4	SCARD_IOCTL_READCACHEW	ReadCacheW_Call (section 2.2.2.26) , ReadCache_Return (section 2.2.3.1)
62	0x000900F8	SCARD_IOCTL_WRITECACHEA	WriteCacheA_Call (section 2.2.2.27) , Long_Return (section 2.2.3.3)
63	0x000900FC	SCARD_IOCTL_WRITECACHEW	WriteCacheW_Call (section 2.2.2.28) , Long_Return (section 2.2.3.3)
64	0x00090100	SCARD_IOCTL_GETTRANSMITCOUNT	GetTransmitCount_Call (section 2.2.2.29) , GetTransmitCount_Return (section 2.2.3.13)
65	0x00090104	SCARD_IOCTL_GETREADERICON	GetReaderIcon_Call (section 2.2.2.31) , GetReaderIcon_Return (section 2.2.3.14)
66	0x00090108	SCARD_IOCTL_GETDEVICETYPEID	GetDeviceTypeId_Call (section 2.2.2.32) , GetDeviceTypeId_Return (section 2.2.3.15)

The **TS client** MUST be able to process multiple requests simultaneously within the limits of its resources.

Any errors from the **Smart Cards for Windows** layer MUST be transferred to the **TS server** and MUST NOT be modified by the TS client. No exceptions are thrown in this protocol.

The following steps MUST be performed on each **call packet** received:

1. The IoControlCode MUST be present, as specified in the preceding IOCTL Processing Rules table, for the specific protocol version implemented. [<2>](#)
2. The input data type is interpreted according to the IOCTL Processing Rules table. The data MUST be decoded as specified in [\[MS-RPCE\]](#) section 2.2.6.
3. Processing MUST be performed according to the corresponding section that follows. On success, it MUST return a structure as specified in the preceding IOCTL Processing Rules table.
4. If the protocol encounters problems decoding the input or encoding the results, then DR_DEVICE_IOCTLCOMPLETION.IOStatus (as specified in [\[MS-RDPEFS\]](#) section 2.2.1.5) MUST be set to an NTSTATUS code (as specified in [\[MS-ERREF\]](#) section 2.3), the most common of which appear in the following table.

Return value/code	Description
STATUS_NO_MEMORY 0xC0000017	Not enough virtual memory or paging file quota is available to complete the specified operation.
STATUS_UNSUCCESSFUL 0xC0000001	The requested operation was unsuccessful.

Return value/code	Description
STATUS_BUFFER_TOO_SMALL 0xC0000023	The buffer is too small to contain the entry. No information has been written to the buffer.

5. On error, DR_DEVICE_IOCTLCOMPLETION.Parameters.DeviceIOControl.OutputBufferLength MUST be set to zero and DR_DEVICE_IOCTLCOMPLETION.Parameters.DeviceIOControl.OutputBuffer MUST set to NULL.
6. Otherwise, DR_DEVICE_IOCTLCOMPLETION.IOStatus MUST be set to 0 (STATUS_SUCCESS) and DR_DEVICE_IOCTLCOMPLETION.Parameters.DeviceIOControl.OutputBuffer MUST contain an encoding of the structure (as specified in the preceding Message Processing Events and Sequencing Rules IOCTL Table) as specified in [MS-RPCE] section 2.2.6. DR_DEVICE_IOCTLCOMPLETION.Parameters.DeviceIOControl.OutputBufferLength is the length of the data.
7. The return packet is then sent according to Remote Desktop Protocol: File System Virtual Channel Extension.

3.1.4.1 SCARD_IOCTL_ESTABLISHCONTEXT (IOCTL 0x00090014)

Establish Context creates a new **Smart Cards for Windows** context specified for use in subsequent communication with Smart Cards for Windows.

Return Values: This method sets [EstablishContext_Return.ReturnCode](#) to SCARD_S_SUCCESS on success; otherwise, it sets one of the smart card-specific errors or one of the return codes from Winerror.h. No specialized error codes are associated with this method.

If the call is successful, EstablishContext_Return.Context MUST be added to the rgSCardContextList list maintained by this client.

3.1.4.2 SCARD_IOCTL_RELEASECONTEXT (IOCTL 0x00090018)

Release Context releases a previously established **Smart Cards for Windows** context as specified in section [3.1.4.1](#). The context MUST exist in **rgSCardContextList**.

Return Values: This method sets Long_Return.ReturnCode (for more information, see section [2.2.3.3](#)) to SCARD_S_SUCCESS on success; otherwise, it sets one of the smart card-specific errors or one of the return codes from Winerror.h. No specialized error codes are associated with this method.

If the call is successful, Context_Call.Context (for more information, see section [2.2.2.2](#)) is removed from rgSCardContextList.

3.1.4.3 SCARD_IOCTL_ISVALIDCONTEXT (IOCTL 0x0009001C)

Is Valid Context checks if a previously established **Smart Cards for Windows** context from [SCARD_IOCTL_ESTABLISHCONTEXT](#) is still valid. For this call to succeed, Context_Call.Context (for more information, see section [2.2.2.2](#)) MUST exist in rgSCardContextList and the Smart Cards for Windows communication channel MUST still be present.

Return Values: This method sets Long_Return.ReturnCode (for more information, see section [2.2.3.3](#)) to SCARD_S_SUCCESS on success; otherwise, it sets one of the smart card-specific errors or one of the return codes from Winerror.h. No specialized error codes are associated with this method.

3.1.4.4 SCARD_IOCTL_ACCESSSTARTEDEVENT (IOCTL 0x000900E0)

Access Started Event waits until **Smart Cards for Windows** is running.

Return Values: This method sets Long_Return.ReturnCode (for more information, see section [2.2.3.3](#)) to SCARD_S_SUCCESS if Smart Cards for Windows is running; otherwise, it sets one of the smart card-specific errors or one of the return codes from Winerror.h. No specialized error codes are associated with this method.

3.1.4.5 SCARD_IOCTL_LISTREADERGROUPSA (IOCTL 0x00090020)

The **ASCII** version List Reader Groups returns the reader groups known to **Smart Cards for Windows**. [ListReaderGroups_Return](#) is constructed according to ListReaderGroups_Return and ListReaders_Return and the information in [ListReaderGroups_Call](#).

Return Values: This method sets ListReaderGroups_Return.ReturnCode (for more information, see section 2.2.3.4) to SCARD_S_SUCCESS on success; otherwise, it sets one of the smart card-specific errors or one of the return codes from Winerror.h. No specialized error codes are associated with this method.

3.1.4.6 SCARD_IOCTL_LISTREADERGROUPSW (IOCTL 0x00090024)

The **Unicode** version List Reader Groups returns the reader groups known to **Smart Cards for Windows**. [ListReaderGroups_Return](#) is constructed according to ListReaderGroups_Return and ListReaders_Return and the information in [ListReaderGroups_Call](#).

Return Values: This method sets ListReaderGroups_Return.ReturnCode (for more information, see section 2.2.3.4) to SCARD_S_SUCCESS on success; otherwise, it sets one of the smart card-specific errors or one of the return codes from Winerror.h. No specialized error codes are associated with this method.

3.1.4.7 SCARD_IOCTL_LISTREADERSA (IOCTL 0x00090028)

The **ASCII** version of List Readers returns the **smart card readers** known to **Smart Cards for Windows**. [ListReaders_Return](#) is constructed according to ListReaderGroups_Return and ListReaders_Return and [ListReaders_Call](#).

Return Values: The method sets ListReaders_Return.ReturnCode (for more information, see section 2.2.3.4) to SCARD_S_SUCCESS on success; otherwise, it sets one of the smart card-specific errors or one of the return codes from Winerror.h. No specialized error codes are associated with this method.

3.1.4.8 SCARD_IOCTL_LISTREADERSW (IOCTL 0x0009002C)

The **Unicode** version of List Readers returns the **smart card readers** known to **Smart Cards for Windows**. [ListReaders_Return](#) is constructed according to ListReaderGroups_Return and ListReaders_Return and [ListReaders_Call](#).

Return Values: The method sets ListReaders_Return.ReturnCode (for more information, see section 2.2.3.4) to SCARD_S_SUCCESS on success; otherwise, it sets one of the smart card-specific errors or one of the return codes from Winerror.h. No specialized error codes are associated with this method.

3.1.4.9 SCARD_IOCTL_INTRODUCEREADERGROUPA (IOCTL 0x00090050)

The **ASCII** version of Introduce Reader Group adds the reader group specified in ContextAndStringA_Call.sz (for more information, see section [2.2.2.5](#)) to the list of reader groups known to **Smart Cards for Windows**.

Return Values: The method sets Long_Return.ReturnCode (for more information, see section [2.2.3.3](#)) to SCARD_S_SUCCESS on success; otherwise, it sets one of the smart card-specific errors or one of the return codes from Winerror.h. No specialized error codes are associated with this method.

3.1.4.10 SCARD_IOCTL_INTRODUCEREADERGROUPW (IOCTL 0x00090054)

The **Unicode** version of Introduce Reader Group adds the reader group specified in ContextAndStringW_Call.sz (for more information, see section [2.2.2.6](#)) to the list of reader groups known to **Smart Cards for Windows**.

Return Values: The method sets Long_Return.ReturnCode (for more information, see section [2.2.3.3](#)) to SCARD_S_SUCCESS on success; otherwise, it sets one of the smart card-specific errors or one of the return codes from Winerror.h. No specialized error codes are associated with this method.

3.1.4.11 SCARD_IOCTL_FORGETREADERGROUPA (IOCTL 0x00090058)

The **ASCII** version of Forget Reader Group removes the reader group specified in ContextAndStringA_Call.sz (for more information, see section [2.2.2.5](#)) from the list of reader groups known to the **Smart Cards for Windows**.

Return Values: The method sets Long_Return.ReturnCode (for more information, see section [2.2.3.3](#)) to SCARD_S_SUCCESS on success; otherwise, it sets one of the smart card-specific errors or one of the return codes from Winerror.h. No specialized error codes are associated with this method.

3.1.4.12 SCARD_IOCTL_FORGETREADERGROUPW (IOCTL 0x0009005C)

The **Unicode** version of Forget Reader Group removes the reader group specified in ContextAndStringW_Call.sz (for more information, see section [2.2.2.6](#)) from the list of reader groups known to **Smart Cards for Windows**.

Return Values: The method sets Long_Return.ReturnCode (for more information, see section [2.2.3.3](#)) to SCARD_S_SUCCESS on success; otherwise, it sets one of the smart card-specific errors or one of the return codes from Winerror.h. No specialized error codes are associated with this method.

3.1.4.13 SCARD_IOCTL_INTRODUCEREADERA (IOCTL 0x00090060)

The **ASCII** version of Introduce Reader adds the **device name** specified in ContextAndTwoStringA_Call.sz2 (for more information, see section [2.2.2.7](#)) to the **smart card reader** specified in ContextAndTwoStringA_Call.sz1.

Return Values: The method sets Long_Return.ReturnCode (for more information, see section [2.2.3.3](#)) to SCARD_S_SUCCESS on success; otherwise, it sets one of the smart card-specific errors or one of the return codes from Winerror.h. No specialized error codes are associated with this method.

3.1.4.14 SCARD_IOCTL_INTRODUCEREADERW (IOCTL 0x00090064)

The **Unicode** version of Introduce Reader adds the **device name** specified in ContextAndTwoStringW_Call.sz2 (for more information, see section [2.2.2.8](#)) to the **smart card reader** specified in ContextAndTwoStringW_Call.sz1.

Return Values: The method sets Long_Return.ReturnCode (for more information, see section [2.2.3.3](#)) to SCARD_S_SUCCESS on success; otherwise, it sets one of the smart card-specific errors or one of the return codes from Winerror.h. No specialized error codes are associated with this method.

3.1.4.15 SCARD_IOCTL_FORGETREADERA (IOCTL 0x00090068)

The **ASCII** version of Forget Reader removes the **smart card reader** specified in ContextAndStringA_Call.sz (for more information, see section [2.2.2.5](#)) from the list of smart card readers known to **Smart Cards for Windows**.

Return Values: The method sets Long_Return.ReturnCode (for more information, see section [2.2.3.3](#)) to SCARD_S_SUCCESS on success; otherwise, it sets one of the smart card-specific errors or one of the return codes from Winerror.h. No specialized error codes are associated with this method.

3.1.4.16 SCARD_IOCTL_FORGETREADERW (IOCTL 0x0009006C)

The **Unicode** version of Forget Reader removes the **smart card reader** specified in ContextAndStringW_Call.sz (for more information, see section [2.2.2.6](#)) from the list of smart card readers known to **Smart Cards for Windows**.

Return Values: The method sets Long_Return.ReturnCode (for more information, see section [2.2.3.3](#)) to SCARD_S_SUCCESS on success; otherwise, it sets one of the smart card-specific errors or one of the return codes from Winerror.h. No specialized error codes are associated with this method.

3.1.4.17 SCARD_IOCTL_ADDREADERTOGROUPA (IOCTL 0x00090070)

The **ASCII** version of Add Reader to Group adds the **smart card reader** specified in ContextAndTwoStringA_Call.sz2 (for more information, see section [2.2.2.7](#)).

Return Values: The method sets Long_Return.ReturnCode (for more information, see section [2.2.3.3](#)) to SCARD_S_SUCCESS on success; otherwise, it sets one of the smart card-specific errors or one of the return codes from Winerror.h. No specialized error codes are associated with this method.

3.1.4.18 SCARD_IOCTL_ADDREADERTOGROUPW (IOCTL 0x00090074)

The **Unicode** version of Add Reader to Group adds the **smart card reader** specified in ContextAndTwoStringW_Call.sz2 (for more information, see section [2.2.2.8](#)).

Return Values: The method sets Long_Return.ReturnCode (for more information, see section [2.2.3.3](#)) to SCARD_S_SUCCESS on success; otherwise, it sets one of the smart card-specific errors or one of the return codes from Winerror.h. No specialized error codes are associated with this method.

3.1.4.19 SCARD_IOCTL_REMOVEREADERFROMGROUPA (IOCTL 0x00090078)

The **ASCII** version of Remove Reader From Group removes the **smart card reader** specified in ContextAndTwoStringA_Call.sz2 (for more information, see section [2.2.2.7](#)).

Return Values: The method sets Long_Return.ReturnCode (for more information, see section [2.2.3.3](#)) to SCARD_S_SUCCESS on success; otherwise, it sets one of the smart card-specific errors or one of the return codes from Winerror.h. No specialized error codes are associated with this method.

3.1.4.20 SCARD_IOCTL_REMOVEREADERFROMGROUPW (IOCTL 0x0009007C)

The **Unicode** version of Remove Reader From Group removes the **smart card reader** specified in ContextAndTwoStringW_Call.sz2 (for more information, see section [2.2.2.8](#)).

Return Values: The method sets Long_Return.ReturnCode (for more information, see section [2.2.3.3](#)) to SCARD_S_SUCCESS on success; otherwise, it sets one of the smart card-specific errors or one of the return codes from Winerror.h. No specialized error codes are associated with this method.

3.1.4.21 SCARD_IOCTL_LOCATECARDSA (IOCTL 0x00090098)

The **ASCII** version of Locate Cards searches the readers specified in LocateCardsA_Call.msCards (for more information, see section [2.2.2.9](#)). Unknown **Card Types** MUST be ignored. [LocateCards Return](#) is constructed according to LocateCards_Return and GetStatusChange_Return by using the information in LocateCardsA_Call.

Return Values: The method sets LocateCards_Return.ReturnCode (for more information, see section 2.2.3.5) to SCARD_S_SUCCESS on success; otherwise, it sets one of the smart card-specific errors or one of the return codes from Winerror.h. No specialized error codes are associated with this method.

3.1.4.22 SCARD_IOCTL_LOCATECARDSW (IOCTL 0x0009009C)

The **Unicode** version of Locate Cards searches the readers specified in LocateCardsW_Call.msxCards (for more information, see section 2.2.2.10). Unknown **Card Types** MUST be ignored. [LocateCards_Return](#) is constructed according to LocateCards_Return and GetStatusChange_Return by using the information in LocateCardsW_Call.

Return Values: The method sets LocateCards_Return.ReturnCode to SCARD_S_SUCCESS on success; otherwise it sets one of the smart card-specific errors or one of the return codes from Winerror.h. No specialized error codes are associated with this method.

3.1.4.23 SCARD_IOCTL_GETSTATUSCHANGEA (IOCTL 0x000900A0)

The **ASCII** version of Get Status Change monitors the **smart card readers** specified in GetStatusChangeA_Call.rgReaderStates (for more information, see section 2.2.2.11) MUST correctly represent the state of the Readers as known by **Smart Cards for Windows**.

Return Values: The method sets [GetStatusChange_Return](#).ReturnCode to SCARD_S_SUCCESS on success; otherwise, it sets one of the smart card-specific errors or one of the return codes from Winerror.h. No specialized error codes are associated with this method.

3.1.4.24 SCARD_IOCTL_GETSTATUSCHANGEW (IOCTL 0x000900A4)

The **Unicode** version of Get Status Change monitors the **smart card readers** specified in GetStatusChangeW_Call.rgReaderStates (for more information, see section 2.2.2.12) MUST correctly represent the state of the readers as known by **Smart Cards for Windows**.

Return Values: The method sets [GetStatusChange_Return](#).ReturnCode to SCARD_S_SUCCESS on success; otherwise, it sets one of the smart card-specific errors or one of the return codes from Winerror.h. No specialized error codes are associated with this method.

3.1.4.25 SCARD_IOCTL_LOCATECARDSBYATRA (IOCTL 0x000900E8)

The **ASCII** version of Locate Cards By ATR searches the Readers specified in LocateCardsByATRA_Call.rgAtrMasks (for more information, see section 2.2.2.23). Unknown **card types** MUST be ignored. [LocateCards_Return](#) is constructed according to LocateCards_Return and GetStatusChange_Return by using the information in LocateCardsByATRA_Call.

Return Values: The method sets LocateCards_Return.ReturnCode (for more information, see section 2.2.3.5) to SCARD_S_SUCCESS on success; otherwise, it sets one of the smart card-specific errors or one of the return codes from Winerror.h. No specialized error codes are associated with this method.

3.1.4.26 SCARD_IOCTL_LOCATECARDSBYATRW (IOCTL 0x000900EC)

The **Unicode** version of Locate Cards By ATR searches the readers specified in LocateCardsByATRW_Call.rgAtrMasks ([LocateCardsByATRW_Call](#)). Unknown **Card Types** MUST be ignored. [LocateCards_Return](#) is constructed according to LocateCards_Return and GetStatusChange_Return by using the information in LocateCardsByATRW_Call.

Return Values: The method sets LocateCards_Return.ReturnCode (for more information, see section 2.2.3.5) to SCARD_S_SUCCESS on success; otherwise, it sets one of the smart card-specific errors or one of the return codes from Winerror.h. No specialized error codes are associated with this method.

3.1.4.27 SCARD_IOCTL_CANCEL (IOCTL 0x000900A8)

The Cancel method MUST instruct **Smart Cards for Windows** to cancel any outstanding calls by using the context specified by Context_Call.Context (for more information, see section [2.2.2.2](#)).

Return Values: The method sets Long_Return.ReturnCode (for more information, see section [2.2.3.3](#)) to SCARD_S_SUCCESS on success; otherwise, it sets one of the smart card-specific errors or one of the return codes from Winerror.h. No specialized error codes are associated with this method.

3.1.4.28 SCARD_IOCTL_CONNECTA (IOCTL 0x000900AC)

The **ASCII** version of Connect establishes a handle to a **smart card reader**. On success, [Connect_Return](#) is initialized according to [Control_Return](#).

Return Values: The method sets the Connect_Return.ReturnCode (for more information, see section [2.2.3.8](#)) to SCARD_S_SUCCESS on success; otherwise, it sets one of the smart card-specific errors or one of the return codes from Winerror.h. No specialized error codes are associated with this method.

3.1.4.29 SCARD_IOCTL_CONNECTW (IOCTL 0x000900B0)

The **Unicode** version of Connect establishes a **smart card reader** handle. On success, [Connect_Return](#) is initialized according to [Control_Return](#) and the caller is given a handle to execute additional methods on the reader.

Return Values: The method sets the Connect_Return.ReturnCode (for more information, see section [2.2.3.8](#)) to SCARD_S_SUCCESS on success; otherwise, it sets one of the smart card-specific errors or one of the return codes from Winerror.h. No specialized error codes are associated with this method.

3.1.4.30 SCARD_IOCTL_DISCONNECT (IOCTL 0x000900B8)

The disconnect method releases a **smart card reader** handle that was acquired in [ConnectA_Call](#) or [ConnectW_Call](#), using [HCardAndDisposition_Call](#).dwDisposition. After a successful call, The smart card reader handle is released and MUST be made available to the system.

Return Values: The method sets [Long_Return](#).ReturnCode to SCARD_S_SUCCESS on success; otherwise, it sets one of the smart card-specific errors or one of the return codes from Winerror.h. No specialized error codes are associated with this method.

3.1.4.31 SCARD_IOCTL_BEGINTRANSACTION (IOCTL 0x000900BC)

The Begin Transaction method locks a **smart card reader** for exclusive access for the specified smart card reader handle. If the caller is unable to receive exclusive access, this call MUST block until the request can be met.

Return Values: The method sets Long_Return.ReturnCode (for more information, see section [2.2.3.3](#)) to SCARD_S_SUCCESS on success; otherwise, it sets one of the smart card-specific errors or one of the return codes from Winerror.h. No specialized error codes are associated with this method.

3.1.4.32 SCARD_IOCTL_ENDTRANSACTION (IOCTL 0x000900C0)

The End Transaction method releases a **smart card reader** after being locked by a previously successful call to Begin Transaction (for more information, see section [3.1.4.31](#)).

Return Values: The method sets Long_Return.ReturnCode (for more information, see section [2.2.3.3](#)) to SCARD_S_SUCCESS on success; otherwise, it sets one of the smart card-specific errors or one of the return codes from Winerror.h. No specialized error codes are associated with this method.

3.1.4.33 SCARD_IOCTL_STATUSA (IOCTL 0x000900C8)

The **ASCII** version of the Status call returns the current state of the **smart card reader** and any **smart card** inserted. On success, Status_Return MUST be initialized according to [Status_Return](#).

Return Values: The method sets Status_Return.ReturnCode (for more information, see section 2.2.3.10) to SCARD_S_SUCCESS on success; otherwise, it sets one of the smart card-specific errors or one of the return codes from Winerror.h. No specialized error codes are associated with this method.

3.1.4.34 SCARD_IOCTL_STATUSW (IOCTL 0x000900CC)

The **Unicode** version of the Status call returns the current state of the **smart card reader** and any **smart card** inserted. On success, Status_Return MUST be initialized according to [Status_Return](#).

Return Values: The method sets Status_Return.ReturnCode (for more information, see section 2.2.3.10) to SCARD_S_SUCCESS on success; otherwise, it sets one of the smart card-specific errors or one of the return codes from Winerror.h. No specialized error codes are associated with this method.

3.1.4.35 SCARD_IOCTL_TRANSMIT (IOCTL 0x000900D0)

The Transmit function sends a command to a **smart card** inserted to the **smart card reader** associated with the smart card reader handle. On success, the command has been successfully sent to the card and the response has been placed in [Transmit_Return](#).

Return Values: The method sets Transmit_Return.ReturnCode (for more information, see section 2.2.3.11) to SCARD_S_SUCCESS on success; otherwise, it sets one of the smart card-specific errors or one of the return codes from Winerror.h. No specialized error codes are associated with this method.

3.1.4.36 SCARD_IOCTL_RECONNECT (IOCTL 0x000900B4)

The reconnect method re-establishes a **smart card reader** handle. On success, the handle is valid once again.

Return Values: The method sets Reconnect_Return.ReturnCode (for more information, see section [2.2.3.7](#)) to SCARD_S_SUCCESS on success; otherwise, it sets one of the smart card-specific errors or one of the return codes from Winerror.h. No specialized error codes are associated with this method.

3.1.4.37 SCARD_IOCTL_CONTROL (IOCTL 0x000900D4)

The Control function sends a command to a **smart card reader** associated with the smart card reader handle. On success, the command has been successfully sent to the smart card reader and the response has been placed in [Control_Return](#).

Return Values: The method sets Control_Return.ReturnCode (for more information, see section 2.2.3.6) to SCARD_S_SUCCESS on success; otherwise, it sets one of the smart card-specific errors or one of the return codes from Winerror.h. No specialized error codes are associated with this method.

3.1.4.38 SCARD_IOCTL_GETATTRIB (IOCTL 0x000900D8)

The Get Attribute function requests an attribute of the **smart card reader** associated with the smart card reader handle. On success, the attribute is copied to [GetAttrib_Return](#).

Return Values: The method sets GetAttrib_Return.ReturnCode (for more information, see section 2.2.3.12) to SCARD_S_SUCCESS on success; otherwise, it sets one of the smart card-specific errors

or one of the return codes from Winerror.h. No specialized error codes are associated with this method.

3.1.4.39 SCARD_IOCTL_SETATTRIB (IOCTL 0x000900DC)

The Set Attribute function changes the value of an attribute of the **smart card reader** associated with the smart card reader handle.

Return Values: The method sets Long_Return.ReturnCode (for more information, see section [2.2.3.3](#)) to SCARD_S_SUCCESS on success; otherwise, it sets one of the smart card-specific errors or one of the return codes from Winerror.h. No specialized error codes are associated with this method.

3.1.4.40 SCARD_IOCTL_STATE (IOCTL 0x000900C4)

The State method returns the current state of the **smart card reader** and any **smart card** inserted. On success, [Status Return](#) MUST be initialized as specified in section 2.2.3.10.

Return Values: The method sets State_Return.ReturnCode (for more information, see section [2.2.3.9](#)) to SCARD_S_SUCCESS on success; otherwise, it sets one of the smart card-specific errors or one of the return codes from Winerror.h. No specialized error codes are associated with this method.

3.1.4.41 SCARD_IOCTL_GETTRANSMITCOUNT (IOCTL 0x00090100)

The Get Transmit Count retrieves the number of times a successful Transmit method (for more information, see section [3.1.4.35](#)) has been performed on the **smart card reader**. On success, [GetTrasmitCount Return](#) MUST be initialized as specified in section 2.2.3.13.

Return Values: The method sets State_Return.ReturnCode (for more information, see section [2.2.3.9](#)) to SCARD_S_SUCCESS on success; otherwise, it sets one of the smart card-specific errors or one of the return codes from Winerror.h. No specialized error codes are associated with this method.

3.1.4.42 SCARD_IOCTL_READCACHEA (IOCTL 0x000900F0)

The **ASCII** version of Read Cache retrieves cached data for a specific **smart card**. Data is cached according to the smart card **UUID** (ReadCacheA_Call.Common.CardIdentifier; for more information, see section [2.2.1.9](#)), the Card Lookup Name (ReadCacheA_Call.szLookupName; for more information, see section [2.2.2.25](#)), and the freshness of the data (ReadCacheA_Call.Common.FreshnessCounter; for more information, see section 2.2.1.9). All three MUST match in order for this call to be successful. On success, ReadCache_Return MUST be initialized as specified in section [2.2.3.1](#).

Return Values: The method sets ReadCache_Return.ReturnCode (for more information, see section 2.2.3.1) to SCARD_S_SUCCESS on success; otherwise, it sets one of the smart card-specific errors or one of the return codes from Winerror.h. No specialized error codes are associated with this method.

3.1.4.43 SCARD_IOCTL_READCACHEW (IOCTL 0x000900F4)

The **Unicode** version of Read Cache retrieves cached data for a specific **smart card** in a **Smart Cards for Windows** cache. Data is cached according to the smart card **UUID** (ReadCacheW_Call.Common.CardIdentifier; for more information, see section [2.2.1.9](#)), the Card Lookup Name (ReadCacheW_Call.szLookupName; for more information, see section [2.2.2.26](#)), and the freshness of the data (ReadCacheW_Call.Common.FreshnessCounter; for more information, see section 2.2.1.9). All three MUST match in order for this call to be successful. On success, ReadCache_Return MUST be initialized as specified in section [2.2.3.1](#).

Return Values: The method sets ReadCache_Return.ReturnCode (for more information, see section 2.2.3.1) to SCARD_S_SUCCESS on success; otherwise, it sets one of the smart card-specific errors or one of the return codes from Winerror.h. No specialized error codes are associated with this method.

3.1.4.44 SCARD_IOCTL_WRITECACHEA (IOCTL 0x000900F8)

The **ASCII** version of Write Cache stores data for a specific **smart card** in a **Smart Cards for Windows** cache. Data is cached according to the smart card **UUID** (ReadCacheA_Call.szLookupName; for more information, see section [2.2.2.25](#)), and the freshness of the data (ReadCacheA_Call.Common.FreshnessCounter).

Return Values: The method sets Long_Return.ReturnCode (for more information, see section [2.2.3.3](#)) to SCARD_S_SUCCESS on success; otherwise, it sets one of the smart card-specific errors or one of the return codes from Winerror.h. No specialized error codes are associated with this method

3.1.4.45 SCARD_IOCTL_WRITECACHEW (IOCTL 0x000900FC)

The **Unicode** version of Write Cache stores data for a specific **smart card** in a **Smart Cards for Windows** cache. Data is cached according to the smart card **UUID** (ReadCacheA_Call.szLookupName; for more information, see section [2.2.2.25](#)), and the freshness of the data (ReadCacheA_Call.Common.FreshnessCounter).

Return Values: The method sets Long_Return.ReturnCode (for more information, see section [2.2.3.3](#)) to SCARD_S_SUCCESS on success; otherwise, it sets one of the smart card-specific errors or one of the return codes from Winerror.h. No specialized error codes are associated with this method

3.1.4.46 SCARD_IOCTL_RELEASETARTEDEVENT

The SCARD_IOCTL_RELEASETARTEDEVENT IOCTL value is not used.

3.1.4.47 SCARD_IOCTL_GETREADERICON (IOCTL 0x00090104)

Get Reader Icon retrieves the icon from the INF file for a specific smart card reader name (for more information, see **GetReaderIcon_Call.szReaderName**, section [2.2.2.31](#)). On success, **GetReaderIcon_Return.pbData** contains the icon; for more information, see section [2.2.3.14](#).

Return Values: This method sets **GetReaderIcon_Return.ReturnCode** (for more information, see section [2.2.3.14](#)) to SCARD_S_SUCCESS on success; otherwise, it sets one of the smart card-specific errors or another error code. No specialized error codes are associated with this method.

3.1.4.48 SCARD_IOCTL_GETDEVICETYPEID (IOCTL 0x00090108)

Get Device Type ID retrieves the device type from the INF file for a specific smart card reader name (**GetDeviceTypeId_Call.szReaderName**; for more information, see section [2.2.2.32](#)). On success, **GetDeviceTypeId_Return.dwDeviceId** contains the device type ID; for more information, see section [2.2.3.15](#).

Return Values: This method sets **GetDeviceTypeId_Return.ReturnCode** (for more information, see section [2.2.3.15](#)) to SCARD_S_SUCCESS on success; otherwise, it sets one of the smart card-specific errors or another error code. No specialized error codes are associated with this method.

3.1.5 Timer Events

None.

3.1.6 Other Local Events

On protocol termination, the following actions are performed.

For each context in `rgSCardContextList`, [Cancel](#) is called causing all outstanding messages to be processed. After there are no more outstanding messages, [Release Context](#) is called on each context and the context MUST be removed from `rgSCardContextList`.

3.2 Protocol Client Details

3.2.1 Abstract Data Model

This section describes a conceptual model of possible data organization that an implementation maintains to participate in this protocol. The described organization is provided to facilitate the explanation of how the protocol behaves. This document does not mandate that implementations adhere to this model provided that their external behavior is consistent with that described in this document.

The following state MUST be kept by this protocol:

dwDeviceId: device ID of **smart card** redirection **device**.

rgOutstandingMessages: Outstanding **call packets** have not received a **return packet**.

3.2.2 Timers

No timers are required.

3.2.3 Initialization

Initialization occurs when the **protocol server** sends a device-announce message according to Remote Desktop Protocol: File System Virtual Channel Extension. At that time, **dwDeviceId** MUST receive the unique device ID announced. The **rgOutstandingMessage** field MUST be set to the empty list.

3.2.4 Higher-Layer Triggered Events

None.

3.2.5 Message Processing Events and Sequencing Rules

3.2.5.1 Sending Outgoing Messages

Messages are constructed according to Remote Desktop Protocol: File System Virtual Channel Extension as a **device I/O control** message on the redirected device **dwDeviceId**. The **call packet** MUST follow the format specified in IOCTL Processing Rules. The structure MUST be encoded as specified in [\[MS-RPCE\]](#) section 2. The output buffer length SHOULD be set to 2,048 bytes.

The message is sent to the **protocol server** by using a transport as specified in [\[MS-RDPEFS\]](#) section 2.1.

3.2.5.2 Processing Incoming Replies

The following steps MUST be applied to each message when they are received.

If `IOStatus` is `STATUS_BUFFER_TOO_SMALL`, then the message SHOULD be retransmitted according to [Sending Outgoing Messages](#), doubling the previously requested buffer length.

If `IOStatus` is zero, the corresponding `IoControlCode`-specific reply processing MUST be performed.

Otherwise, the call is considered a failure and the error MUST be propagated to the higher layer.

3.2.5.3 Messages

3.2.5.3.1 Sending EstablishContext Message

IoControlCode MUST be set to [SCARD_IOCTL_ESTABLISHCONTEXT](#).

[EstablishContext Call](#) MUST be initialized as specified in section 2.2.2.1.

3.2.5.3.2 Processing EstablishContext Reply

The OutputBuffer MUST be decoded as [EstablishContext Return](#), as specified in [\[MS-RPCE\]](#) section 2.2.6.

3.2.5.3.3 Sending ReleaseContext Message

IoControlCode MUST be set to [SCARD_IOCTL_RELEASECONTEXT](#).

[Context Call](#) MUST be initialized, as specified in section 2.2.2.2.

3.2.5.3.4 Processing ReleaseContext Reply

The response message MUST be decoded as [Long Return](#), as specified in [\[MS-RPCE\]](#) section 2.2.6.

3.2.5.3.5 Sending IntroduceReader (ASCII) Message

IoControlCode MUST be set to [SCARD_IOCTL_INTRODUCEREADERA](#).

[ContextAndTwoStringA Call](#) MUST be initialized as specified in section 2.2.2.7 for a SCARD_IOCTL_INTRODUCEREADERA call.

3.2.5.3.6 Processing IntroduceReader (ASCII) Reply

The OutputBuffer MUST be decoded as a [Long Return](#).

3.2.5.3.7 Sending IntroduceReader (Unicode) Message

IoControlCode MUST be set to [SCARD_IOCTL_INTRODUCEREADERW](#).

[ContextAndTwoStringW Call](#) MUST be initialized, as specified in section 2.2.2.8, for a SCARD_IOCTL_INTRODUCEREADERW call.

3.2.5.3.8 Processing IntroduceReader (Unicode) Reply

The OutputBuffer MUST be decoded as [Long Return](#), as specified in [\[MS-RPCE\]](#) section 2.2.6.

3.2.5.3.9 Sending ForgetReader (ASCII) Message

IoControlCode MUST be set to [SCARD_IOCTL_FORGETREADERA](#).

[ContextAndStringA Call](#) MUST be initialized, as specified in section 2.2.2.5, for a SCARD_IOCTL_FORGETREADERA call.

3.2.5.3.10 Processing ForgetReader (ASCII) Reply

The OutputBuffer MUST be decoded as [Long Return](#), as specified in [\[MS-RPCE\]](#) section 2.2.6.

3.2.5.3.11 Sending ForgetReader (Unicode) Message

IoControlCode MUST be set to [SCARD_IOCTL_FORGETREADERW](#).

[ContextAndStringW Call](#) MUST be initialized, as specified in section 2.2.2.6, for a SCARD_IOCTL_FORGETREADERW call.

3.2.5.3.12 Processing ForgetReader (Unicode) Reply

The OutputBuffer MUST be decoded as [Long Return](#), as specified in [\[MS-RPCE\]](#) section 2.2.6.

3.2.5.3.13 Sending IntroduceReaderGroup (ASCII) Message

IoControlCode MUST be set to [SCARD_IOCTL_INTRODUCEREADERGROUPA](#).

[ContextAndStringA Call](#) MUST be initialized, as specified in section 2.2.2.5, for a SCARD_IOCTL_INTRODUCEREADERGROUPA call.

3.2.5.3.14 Processing IntroduceReaderGroup (ASCII) Reply

The OutputBuffer MUST be decoded as [Long Return](#), as specified in [\[MS-RPCE\]](#) section 2.2.6.

3.2.5.3.15 Sending IntroduceReaderGroup (Unicode) Message

IoControlCode MUST be set to [SCARD_IOCTL_INTRODUCEREADERGROUPOW](#).

[ContextAndStringW Call](#) MUST be initialized, as specified in section 2.2.2.6, for a SCARD_IOCTL_INTRODUCEREADERGROUPOW call.

3.2.5.3.16 Processing IntroduceReaderGroup (Unicode) Reply

The OutputBuffer MUST be decoded as [Long Return](#), as specified in [\[MS-RPCE\]](#) section 2.2.6.

3.2.5.3.17 Sending ForgetReaderGroup (ASCII) Message 1

IoControlCode MUST be set to [SCARD_IOCTL_FORGETREADERGROUPA](#).

[ContextAndStringA Call](#) MUST be initialized, as specified in section 2.2.2.5, for a SCARD_IOCTL_FORGETREADERGROUPA call.

3.2.5.3.18 Processing ForgetReaderGroup (ASCII) Reply

The OutputBuffer MUST be decoded as [Long Return](#), as specified in [\[MS-RPCE\]](#) section 2.2.6.

3.2.5.3.19 Sending ForgetReaderGroup (ASCII) Message 2

IoControlCode MUST be set to [SCARD_IOCTL_FORGETREADERGROUPOW](#).

[ContextAndStringW Call](#) MUST be initialized, as specified in section 2.2.2.6, for a SCARD_IOCTL_FORGETREADERGROUPOW call.

3.2.5.3.20 Processing ForgetReaderGroup (Unicode) Reply

The OutputBuffer MUST be decoded as [Long Return](#), as specified in [\[MS-RPCE\]](#) section 2.2.6.

3.2.5.3.21 Sending AddReaderToGroup (ASCII) Message

IoControlCode MUST be set to [SCARD_IOCTL_ADDREADERTOGROUPA](#).

[ContextAndTwoStringA_Call](#) MUST be initialized, as specified in section 2.2.2.7, for a SCARD_IOCTL_ADDREADERTOGRROUPA call.

3.2.5.3.22 Processing AddReaderToGroup (ASCII) Reply

The OutputBuffer MUST be decoded as [Long_Return](#), as specified in [\[MS-RPCE\]](#) section 2.2.6.

3.2.5.3.23 Sending AddReaderToGroup (Unicode) Message

IoControlCode MUST be set to [SCARD_IOCTL_ADDREADERTOGRROUPW](#).

[ContextAndTwoStringW_Call](#) MUST be initialized, as specified in section 2.2.2.8, for a SCARD_IOCTL_ADDREADERTOGRROUPW call.

3.2.5.3.24 Processing AddReaderToGroup (Unicode) Reply

The OutputBuffer MUST be decoded as [Long_Return](#), as specified in [\[MS-RPCE\]](#) section 2.2.6.

3.2.5.3.25 Sending RemoveReaderFromGroup (ASCII) Message

IoControlCode MUST be set to [SCARD_IOCTL_REMOVEREADERFROMGRROUPA](#).

[ContextAndTwoStringA_Call](#) MUST be initialized, as specified in section 2.2.2.7, for a SCARD_IOCTL_REMOVEREADERFROMGRROUPA call.

3.2.5.3.26 Processing RemoveReaderFromGroup (ASCII) Reply

The OutputBuffer MUST be decoded as [Long_Return](#), as specified in [\[MS-RPCE\]](#) section 2.2.6.

3.2.5.3.27 Sending RemoveReaderFromGroup (Unicode) Message

IoControlCode MUST be set to [SCARD_IOCTL_REMOVEREADERFROMGRROUPW](#).

[ContextAndTwoStringW_Call](#) MUST be initialized, as specified in section 2.2.2.8, for a SCARD_IOCTL_REMOVEREADERFROMGRROUPW call.

3.2.5.3.28 Processing RemoveReaderFromGroup (Unicode) Reply

The OutputBuffer MUST be decoded as [Long_Return](#), as specified in [\[MS-RPCE\]](#) section 2.2.6.

3.2.5.3.29 Sending ListReaderGroups (ASCII) Message

IoControlCode MUST be set to [SCARD_IOCTL_LISTREADERGRROUPSA](#).

[ListReaderGroups_Call](#) MUST be initialized, as specified in section 2.2.2.3.

3.2.5.3.30 Processing ListReaderGroups (ASCII) Reply

The OutputBuffer MUST be decoded as [ListReaderGroups_Return](#), as specified in [\[MS-RPCE\]](#) section 2.2.6.

3.2.5.3.31 Sending ListReaderGroups (Unicode) Message

IoControlCode MUST be set to [SCARD_IOCTL_LISTREADERGRROUPSW](#).

[ListReaderGroups_Call](#) MUST be initialized, as specified in section 2.2.2.3.

3.2.5.3.32 Processing ListReaderGroups (Unicode) Reply

The OutputBuffer MUST be decoded as [ListReaderGroups_Return](#), as specified in [\[MS-RPCE\]](#) section 2.2.6.

3.2.5.3.33 Sending ListReaders (ASCII) Message

IoControlCode MUST be set to [SCARD_IOCTL_LISTREADERSA](#).

[ListReaders_Call](#) MUST be initialized, as specified in section 2.2.2.4, for an **ASCII** call.

3.2.5.3.34 Processing ListReadersReply (ASCII) Reply

The OutputBuffer MUST be decoded as [ListReaders_Return](#), as specified in [\[MS-RPCE\]](#) section 2.2.6.

3.2.5.3.35 Sending ListReaders (Unicode) Message

IoControlCode MUST be set to [SCARD_IOCTL_LISTREADERSW](#).

[ListReaders_Call](#) MUST be initialized, as specified in section 2.2.2.4, for an **Unicode** call.

3.2.5.3.36 Processing ListReadersReply (Unicode) Reply

The OutputBuffer MUST be decoded as [ListReaders_Return](#), as specified in [\[MS-RPCE\]](#) section 2.2.6.

3.2.5.3.37 Sending LocateCards (ASCII) Message

IoControlCode MUST be set to [SCARD_IOCTL_LOCATECARDSA](#).

[LocateCardsA_Call](#) MUST be initialized as specified in section 2.2.2.9.

3.2.5.3.38 Processing LocateCards (ASCII) Reply

The OutputBuffer MUST be decoded as [LocateCards_Return](#), as specified in [\[MS-RPCE\]](#) section 2.2.6.

3.2.5.3.39 Sending LocateCards (Unicode) Message

IoControlCode MUST be set to [SCARD_IOCTL_LOCATECARDSW](#).

[LocateCardsW_Call](#) MUST be initialized, as specified in section 2.2.2.10.

3.2.5.3.40 Processing LocateCards (Unicode) Reply

The OutputBuffer MUST be decoded as [LocateCards_Return](#), as specified in [\[MS-RPCE\]](#) section 2.2.6.

3.2.5.3.41 Sending GetStatusChange (ASCII) Message

IoControlCode MUST be set to [SCARD_IOCTL_GETSTATUSCHANGEA](#).

[GetStatusChangeA_Call](#) MUST be initialized, as specified in section 2.2.2.11.

3.2.5.3.42 Processing GetStatusChange (ASCII) Reply

The OutputBuffer MUST be decoded as [GetStatusChange_Return](#), as specified in [\[MS-RPCE\]](#) section 2.2.6.

3.2.5.3.43 Sending GetStatusChange (Unicode) Message

IoControlCode MUST be set to [SCARD_IOCTL_GETSTATUSCHANGEW](#).

[GetStatusChangeW_Call](#) MUST be initialized, as specified in section 2.2.2.12.

3.2.5.3.44 Processing GetStatusChange (Unicode) Reply

The OutputBuffer MUST be decoded as [GetStatusChange_Return](#), as specified in [\[MS-RPCE\]](#) section 2.2.6.

3.2.5.3.45 Sending Cancel Message

IoControlCode MUST be set to [SCARD_IOCTL_CANCEL](#).

Context_Call.Context MUST be initialized, as specified in section [2.2.2.2](#).

3.2.5.3.46 Processing Cancel Reply

The OutputBuffer MUST be decoded as [Long_Return](#), as specified in [\[MS-RPCE\]](#) section 2.2.6.

3.2.5.3.47 Sending Connect (ASCII) Message

IoControlCode MUST be set to [SCARD_IOCTL_CONNECTA](#).

[ConnectA_Call](#) MUST be initialized, as specified in section 2.2.2.13.

3.2.5.3.48 Processing Connect (ASCII) Reply

The OutputBuffer MUST be decoded as [Connect_Return](#), as specified in [\[MS-RPCE\]](#) section 2.2.6.

3.2.5.3.49 Sending Connect (Unicode) Message

IoControlCode MUST be set to [SCARD_IOCTL_CONNECTW](#).

[ConnectW_Call](#) MUST be initialized, as specified in section 2.2.2.14.

3.2.5.3.50 Processing Connect (Unicode) Reply

The OutputBuffer MUST be decoded as [Connect_Return](#), as specified in [\[MS-RPCE\]](#) section 2.2.6.

3.2.5.3.51 Sending Reconnect Message

IoControlCode MUST be set to [SCARD_IOCTL_RECONNECT](#).

[Reconnect_Call](#) MUST be initialized, as specified in section 2.2.2.15.

3.2.5.3.52 Processing Reconnect Reply

The OutputBuffer MUST be decoded as [Reconnect_Return](#), as specified in [\[MS-RPCE\]](#) section 2.2.6.

3.2.5.3.53 Sending Disconnect Message

IoControlCode MUST be set to [SCARD_IOCTL_DISCONNECT](#).

[HCardAndDisposition_Call](#) MUST be initialized, as specified in section 2.2.2.16, for a SCARD_IOCTL_DISCONNECT call.

3.2.5.3.54 Processing Disconnect Reply

The OutputBuffer MUST be decoded as [Long_Return](#), as specified in [\[MS-RPCE\]](#) section 2.2.6.

3.2.5.3.55 Sending Status (ASCII) Message

IoControlCode MUST be set to [SCARD_IOCTL_STATUSA](#).

[Status Call](#) MUST be initialized, as specified in section 2.2.2.18.

3.2.5.3.56 Processing Status (ASCII) Reply

The OutputBuffer MUST be decoded as [Status Return](#), as specified in [\[MS-RPCE\]](#) section 2.2.6, and interpreted as a [SCARD_IOCTL_STATUSA](#) return.

3.2.5.3.57 Sending Status (Unicode) Message

IoControlCode MUST be set to [SCARD_IOCTL_STATUSW](#).

[Status Call](#) MUST be initialized, as specified in section 2.2.2.18 .

3.2.5.3.58 Processing Status (Unicode) Reply

The OutputBuffer MUST be decoded as [Status Return](#), as specified in [\[MS-RPCE\]](#) section 2.2.6, and interpreted as a [SCARD_IOCTL_STATUSW](#) return.

3.2.5.3.59 Sending State Message

IoControlCode MUST be set to [SCARD_IOCTL_STATE](#).

[State Call](#) MUST be initialized, as specified in section 2.2.2.17, for a SCARD_IOCTL_STATE call.

3.2.5.3.60 Processing State Message Reply

The OutputBuffer MUST be decoded as [State Return](#), as specified in [\[MS-RPCE\]](#) section 2.2.6, and interpreted as a [SCARD_IOCTL_STATE](#) return.

3.2.5.3.61 Sending BeginTransaction Message

IoControlCode MUST be set to [SCARD_IOCTL_BEGINTRANSACTION](#).

[HCardAndDisposition Call](#) MUST be initialized, as specified in section 2.2.2.16, for a SCARD_IOCTL_BEGINTRANSACTION call.

3.2.5.3.62 Processing BeginTransaction Reply

The OutputBuffer MUST be decoded as [Long Return](#), as specified in [\[MS-RPCE\]](#) section 2.2.6.

3.2.5.3.63 Sending EndTransaction Message

IoControlCode MUST be set to [SCARD_IOCTL_ENDTRANSACTION](#).

[HCardAndDisposition Call](#) MUST be initialized, as specified in section 2.2.2.16, for a SCARD_IOCTL_ENDTRANSACTION call.

3.2.5.3.64 Processing EndTransaction Reply

The OutputBuffer MUST be decoded as [Long Return](#), as specified in [\[MS-RPCE\]](#) section 2.2.6.

3.2.5.3.65 Sending Transmit Message

IoControlCode MUST be set to [SCARD_IOCTL_TRANSMIT](#).

[Transmit_Call](#) MUST be initialized as specified in section 2.2.2.19.

3.2.5.3.66 Processing Transmit Reply

The OutputBuffer MUST be decoded as [Transmit_Return](#), as specified in [\[MS-RPCE\]](#) section 2.2.6.

3.2.5.3.67 Sending Control Message

IoControlCode MUST be set to [SCARD_IOCTL_CONTROL](#).

[Control_Call](#) MUST be initialized as specified in section 2.2.2.20.

3.2.5.3.68 Processing Control Reply

The OutputBuffer MUST be decoded as [Control_Return](#), as specified in [\[MS-RPCE\]](#) section 2.2.6.

3.2.5.3.69 Sending GetReaderCapabilities Message

IoControlCode MUST be set to [SCARD_IOCTL_GETATTRIB](#).

[GetAttrib_Call](#) MUST be initialized as specified in section 2.2.2.21.

3.2.5.3.70 Processing GetReaderCapabilities Reply

The OutputBuffer MUST be decoded as [GetAttrib_Return](#), as specified in [\[MS-RPCE\]](#) section 2.2.6.

3.2.5.3.71 Sending SetReaderCapabilities Message

IoControlCode MUST be set to [SCARD_IOCTL_SETATTRIB](#).

[SetAttrib_Call](#) MUST be initialized as specified in section 2.2.2.22.

3.2.5.3.72 Processing SetReaderCapabilities Reply

The OutputBuffer MUST be decoded as [Long_Return](#), as specified in [\[MS-RPCE\]](#) section 2.2.6.

3.2.5.3.73 Sending WaitForResourceManager Message

IoControlCode MUST be set to [SCARD_IOCTL_ACCESSSTARTEDEVENT](#).

[ScardAccessStartedEvent_Call](#) MUST be initialized as specified in section 2.2.2.30. This structure MUST NOT be encoded and MUST be sent as is.

3.2.5.3.74 Processing WaitForResourceManager Reply

The OutputBuffer MUST be decoded as [Long_Return](#), as specified in [\[MS-RPCE\]](#) section 2.2.6.

3.2.5.3.75 Sending LocateCardsByATR (ASCII) Message

IoControlCode MUST be set to [SCARD_IOCTL_LOCATECARDSBYATRA](#).

[LocateCardsByATRA_Call](#) MUST be initialized as specified in section 2.2.2.23.

3.2.5.3.76 Processing LocateCardsByATR (Unicode) Reply

The OutputBuffer MUST be decoded as [LocateCards_Return](#), as specified in [\[MS-RPCE\]](#) section 2.2.6.

3.2.5.3.77 Processing LocateCardsByATR (ASCII) Reply

The OutputBuffer MUST be decoded as [LocateCards_Return](#), as specified in [\[MS-RPCE\]](#) section 2.2.6.

3.2.5.3.78 Sending LocateCardsByATR (Unicode) Message

IoControlCode MUST be set to [SCARD_IOCTL_LOCATECARDSBYATRW](#).

[LocateCardsByATRW_Call](#) MUST be initialized as specified in section 2.2.2.24.

3.2.5.3.79 Sending ReadCache (ASCII) Message

IoControlCode MUST be set to [SCARD_IOCTL_READCACHEA](#).

[ReadCacheA_Call](#) MUST be initialized as specified in section 2.2.2.25.

3.2.5.3.80 Processing ReadCache (ASCII) Reply

The OutputBuffer MUST be decoded as [ReadCache_Return](#), as specified in [\[MS-RPCE\]](#) section 2.2.6.

3.2.5.3.81 Sending ReadCache (Unicode) Message

IoControlCode MUST be set to [SCARD_IOCTL_READCACHEW](#).

[ReadCacheW_Call](#) MUST be initialized as specified in section 2.2.2.26.

3.2.5.3.82 Processing ReadCache (Unicode) Reply

The OutputBuffer MUST be decoded as [ReadCache_Return](#), as specified in [\[MS-RPCE\]](#) section 2.2.6.

3.2.5.3.83 Sending WriteCache (ASCII) Message

IoControlCode MUST be set to [SCARD_IOCTL_WRITECACHEA](#).

[WriteCacheA_Call](#) MUST be initialized as specified in section 2.2.2.27.

3.2.5.3.84 Processing WriteCache (ASCII) Reply

The OutputBuffer MUST be decoded as [Long_Return](#), as specified in [\[MS-RPCE\]](#) section 2.2.6.

3.2.5.3.85 Sending WriteCache (Unicode) Message

IoControlCode MUST be set to [SCARD_IOCTL_WRITECACHEW](#).

[WriteCacheW_Call](#) MUST be initialized as specified in section 2.2.2.28.

3.2.5.3.86 Processing WriteCache (Unicode) Reply

The OutputBuffer MUST be decoded as [Long_Return](#), as specified in [\[MS-RPCE\]](#) section 2.2.6.

3.2.5.3.87 Sending GetTransmitCount Message

IoControlCode MUST be set to [SCARD_IOCTL_GETTRANSMITCOUNT](#).

[GetTransmitCount_Call](#) MUST be initialized as specified in section 2.2.2.29.

3.2.5.3.88 Processing GetTransmitCount Reply

The OutputBuffer MUST be decoded as [GetTransmitCount_Return](#), as specified in [\[MS-RPCE\]](#) section 2.2.6.

3.2.5.3.89 Sending GetReaderIcon Message

IoControlCode MUST be set to SCARD_IOCTL_GETREADERICON.

GetReaderIcon_Call MUST be initialized as specified in section [2.2.2.31](#).

3.2.5.3.90 Processing GetReaderIcon Reply

The **OutputBuffer** MUST be decoded as **GetReaderIcon_Return**, as specified in section [2.2.3.14](#).

3.2.5.3.91 Sending GetDeviceTypeId Message

IoControlCode MUST be set to SCARD_IOCTL_GETDEVICETYPEID.

GetDeviceTypeId_Call MUST be initialized as specified in section [2.2.2.32](#).

3.2.5.3.92 Processing GetDeviceTypeId Reply

The **OutputBuffer** MUST be decoded as **GetDeviceTypeId_Return**, as specified in section [2.2.3.15](#).

3.2.6 Timer Events

None.

3.2.7 Other Local Events

None.

4 Protocol Examples

This example shows the messages sent to perform a simple querying of a card in the **TS client** machine. It assumes that a channel has already been set up on the between the TS client and the **TS server**. In addition, a PC/SC-compatible resource manager is running on the TS client and there exists a **smart card reader** with a **smart card** inserted. The following figure represents the program flow.

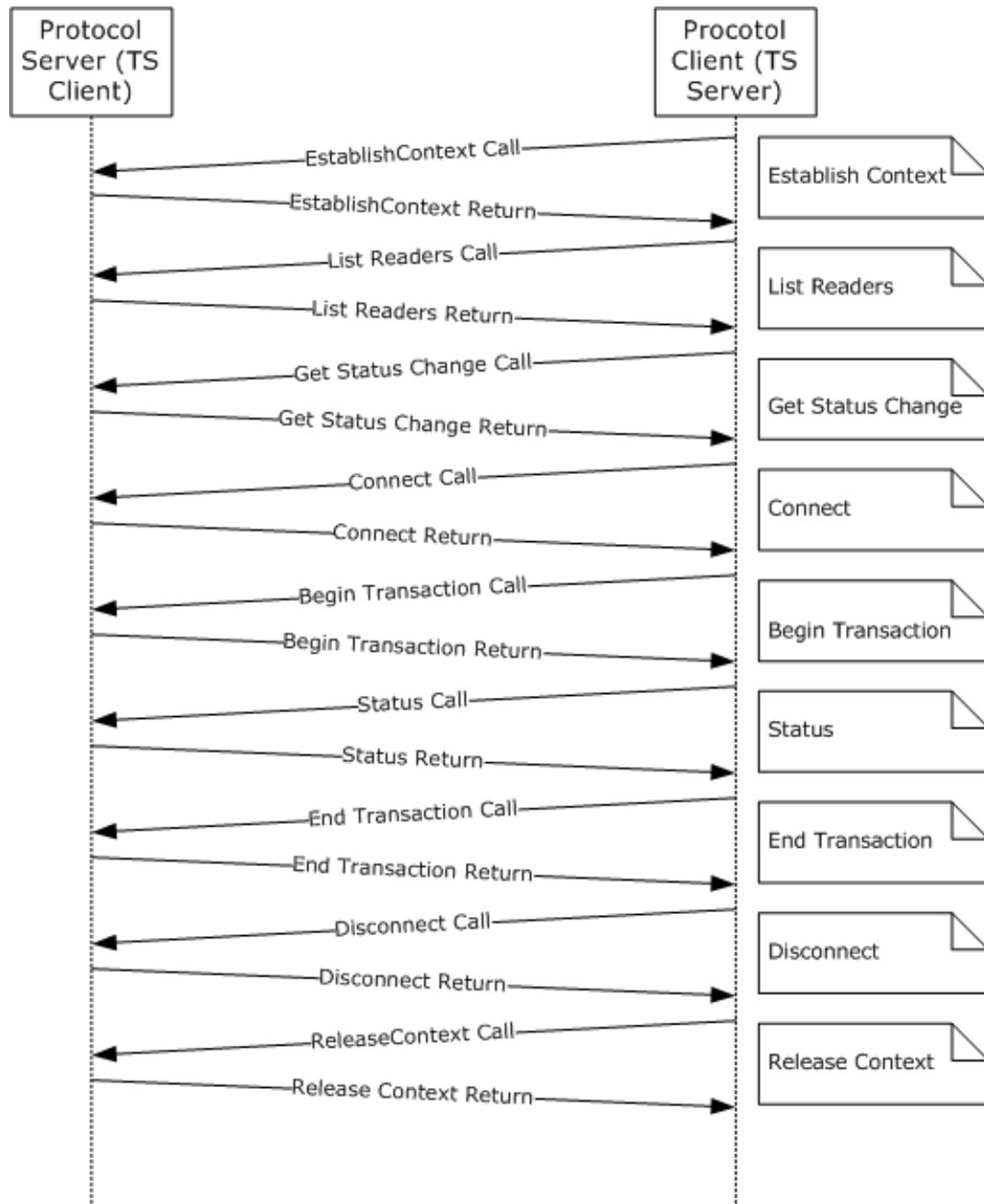


Figure 4: Protocol flow

This representation of the protocol flow is simplified in that there is only one application sending data over this protocol. In an actual implementation there could be multiple outstanding calls at any time.

All packets are constructed as specified in sections [3.2.5](#) and [3.2.5.3](#). The Status field refers to the **IoStatus** field as specified in [\[MS-RDPEFS\]](#) section 2.2.1.5. The **CompletionId** field is also specified in [\[MS-RDPEFS\]](#) section 2.2.1.5.

4.1 Establish Context Call

```
IoControlCode= SCARD_IOCTL_ESTABLISHCONTEXT
CompletionId = 0
EstablishContext_Call {
  dwScope = SCARD_SCOPE_SYSTEM
}
```

The **CompletionId** field is specified in [\[MS-RDPEFS\]](#) section 2.2.1.4.

4.2 Establish Context Return

```
CompletionId = 0
Status = 0
EstablishContext_Return {
  ReturnCode = 0
  Context = {cbContext = 4, pbContext = {0x00,0x00,0x01,0xcd} }
}
```

The **Status** field is specified as the **IoStatus** field in [\[MS-RDPEFS\]](#) section 2.2.1.5.

4.3 List Readers Call

```
IoControlCode = SCARD_IOCTL_LISTREADERSW
CompletionId = 0
ListReaders_Call {
  Context = {cbContext = 4, pbContext = {0x00,0x00,0x01,0xcd} }
  cBytes = 44
  mszGroups = L"SCard$DefaultReaders\0\0"
  fmszReadersIsNull = 0
  cchReaders = 0xFFFFFFFF
}
```

4.4 List Readers Return

```
CompletionId = 0
Status = 0
ListReaders_Return {
  ReturnCode = 0
  cReaders = 66
  msz = L"Gemplus USB Smart Card Reader 0\0\0"
}
```

4.5 Get Status Change Call

```
IoControlCode = SCARD_IOCTL_GETSTATUSCHANGEW
CompletionId = 0
GetStatusChangeW_Call {
  Context = {cbContext = 4, pbContext = {0x00,0x00,0x01,0xcd} }
  dwTimeOut = 0
  cReaders = 1
  rgReaderStates = {
    { szReader = L"Gemplus USB Smart Card Reader 0"
      Common = {
        dwCurrentState = SCARD_STATE_UNAWARE
      }
    }
  }
}
```

```

dwEventState = 0
cbAtr = 0
pbAtr = {0} }
}
}
}

```

4.6 Get Status Change Return

```

Status = 0
CompletionId = 0
GetStatusChange_Return = {
ReturnCode = 0
cReaders = 1
rgReaderStates = {
dwCurrentState = SCARD_STATE_UNAWARE
dwEventState = SCARD_STATE_CHANGED |
SCARD_STATE_PRESENT | SCARD_STATE_INUSE
cbAtr = 9
rgbAtr = {0x3b, 0x16, 0x94,0x41, 0x73, 0x74,0x72,0x69,
0x64}
}
}

```

4.7 Connect Call

```

IoControlCode = SCARD_IOCTL_CONNECTW
CompletionId = 0
ConnectW_Call = {
szReader = L"Gemplus USB Smart Card Reader 0"
Common = {
Context = { cbContext = 4, pbContext = {0x00,0x00,0x01,0xcd} }
dwShareMode = SCARD_SHARE_SHARED
dwPreferredProtocols = SCARD_PROTOCOL_T0 | SCARD_PROTOCOL_T1
}
}
}

```

4.8 Connect Return

```

CompletionId = 0
Status = 0
Connect Return = {
ReturnCode = 0
hCard = {
Context = { cbContext = 4, pbContext = {0x00,0x00,0x01,0xcd} }
cbHandle = 4
pbHandle = {0x00,0x00,0x01,0xea}{0x00,0x00,0x01,0xea}
dwActiveProtocol = SCARD_PROTOCOL_T0
}
}

```

4.9 Begin Transaction Call

```

IoControlCode = SCARD_IOCTL_BEGINTRANSACTION
CompletionId = 0
HCardAndDisposition Call = {
hCard = {
Context = { cbContext = 4, pbContext = {0x00,0x00,0x01,0xcd} }
cbHandle = 4
pbHandle = {0x00,0x00,0x01,0xea}
dwDisposition = 0
}
}

```

```
}
```

4.10 Begin Transaction Return

```
CompletionId = 0  
Status = 0  
Long_Return = {  
ReturnCode = 0  
}
```

4.11 Status Call

```
IoControlCode = SCARD_IOCTL_STATUSW  
CompletionId = 0  
Status_Call = {  
hCard = {  
Context = { cbContext = 4, pbContext = {0x00,0x00,0x01,0xcd} }  
cbHandle = 4  
pbHandle = {0x00,0x00,0x01,0xea} }  
fmszReaderNamesIsNull = 0  
cchReaderLen = 0xFFFFFFFF  
cbAttrLen = 36  
}
```

4.12 Status Return

```
CompletionId = 0  
IoStatus = 0  
Status_Return = {  
ReturnCode = 0  
cBytes = 66  
mszReaderNames = L"Gemplus USB Smart Card Reader 0\0\0"  
dwState = SCARD_SPECIFICMODE  
dwProtocol = SCARD_PROTOCOL_T0  
pbAtr = {0x3b, 0x16, 0x94,0x41, 0x73, 0x74,0x72,0x69,0x64}  
cbAtr = 9  
}
```

4.13 End Transaction Call

```
IoControlCode = SCARD_IOCTL_ENDTRANSACTION  
CompletionId = 0  
HCardAndDisposition_Call = {  
hCard = {  
Context = { cbContext = 4, pbContext = {0x00,0x00,0x01,0xcd} }  
cbHandle = 4  
pbHandle = {0x00,0x00,0x01,0xea}}  
dwDisposition = SCARD_LEAVE_CARD  
}
```

4.14 End Transaction Return

```
CompletionId = 0  
Status = 0  
Long_Return = {  
ReturnCode = 0  
}
```

4.15 Disconnect Call

```
IoControlCode = SCARD_IOCTL_DISCONNECT
CompletionId = 0
HCardAndDisposition Call = {
  hCard = {
  Context = { cbContext = 4, pbContext = {0x00,0x00,0x01,0xcd} }
  cbHandle = 4
  pbHandle = {0x00,0x00,0x01,0xea}}
  dwDisposition = SCARD_RESET_CARD
}
```

4.16 Disconnect Return

```
CompletionId = 0
Status = 0
Long_Return = {
  ReturnCode = 0
}
```

4.17 Release Context Call

```
IoControlCode = SCARD_IOCTL_RELEASECONTEXT
CompletionId = 0
Context_Call = {
  Context = {cbContext = 4, pbContext = {0x00,0x00,0x01,0xcd} }
}
```

4.18 Release Context Return

```
CompletionId = 0
Status = 0
Long_Return = {
  ReturnCode = 0
}
```

5 Security

This protocol has no security aspects and relies on the underlying transport for any security.

5.1 Security Considerations for Implementers

None.

5.2 Index of Security Parameters

None.

6 Appendix A: Full IDL

For ease of implementation, the full **Interface Definition Language (IDL)** is provided below where `ms-dtyp.idl` is the IDL as specified in [\[MS-DTYP\]](#) section 5 and `ms-dcom.idl` is the IDL as specified in [\[MS-DCOM\]](#) section 6.

```
import "ms-dtyp.idl";
import "ms-dcom.idl";

[
    uuid(A35AF600-9CF4-11CD-A076-08002B2BD711),
    version(1.0),
    pointer_default(unique)
]
interface type_scard_pack
{
    //
    // Packing for calls that use the same params
    //
    typedef struct _REDIR_SCARDCONTEXT
    {
        [range(0, 16)]            unsigned long    cbContext;
        [unique] [size_is(cbContext)] byte        *pbContext;
    } REDIR_SCARDCONTEXT;

    typedef struct _REDIR_SCARDHANDLE
    {
        REDIR_SCARDCONTEXT        Context;
        [range(0, 16)]            unsigned long    cbHandle;
        [size_is(cbHandle)] byte    *pbHandle;
    } REDIR_SCARDHANDLE;

    typedef struct long Return
    {
        long                    ReturnCode;
    } long_Return;

    typedef struct _longAndMultiString_Return
    {
        long                    ReturnCode;
        [range(0, 65536)]        unsigned long    cBytes;
        [unique] [size_is(cBytes)] byte        *msz;
    } ListReaderGroups_Return, ListReaders_Return;

    typedef struct Context Call
    {
        REDIR_SCARDCONTEXT        Context;
    } Context_Call;

    typedef struct ContextAndStringA Call
    {
        REDIR_SCARDCONTEXT        Context;
        [string] const char *      sz;
    } ContextAndStringA_Call;

    typedef struct ContextAndStringW Call
    {
        REDIR_SCARDCONTEXT        Context;
        [string] const wchar_t *   sz;
    } ContextAndStringW_Call;

    typedef struct _ContextAndTwoStringA_Call
    {
        REDIR_SCARDCONTEXT        Context;
        [string] const char *      sz1;
    }
}
```

```

    [string] const char *                sz2;
} ContextAndTwoStringA_Call;

typedef struct _ContextAndTwoStringW_Call
{
    REDIR_SCARDCONTEXT                  Context;
    [string] const wchar_t *            sz1;
    [string] const wchar_t *            sz2;
} ContextAndTwoStringW_Call;

//
// Call specific packing
//
typedef struct _EstablishContext_Call
{
    unsigned long                        dwScope;
} EstablishContext_Call;

typedef struct EstablishContext_Return
{
    long                                  ReturnCode;
    REDIR_SCARDCONTEXT                  Context;
} EstablishContext_Return;

typedef struct _ListReaderGroups_Call
{
    REDIR_SCARDCONTEXT                  Context;
    long                                  fmszGroupsIsNULL;
    unsigned long                        cchGroups;
} ListReaderGroups_Call;

typedef struct ListReaders_Call
{
    REDIR_SCARDCONTEXT                  Context;
    [range(0, 65536)] unsigned long      cBytes;
    [unique] [size_is(cBytes)] const byte *mszGroups;
    long                                  fmszReadersIsNULL;
    unsigned long                        cchReaders;
} ListReaders_Call;

typedef struct _ReaderState_Common_Call
{
    unsigned long                        dwCurrentState;
    unsigned long                        dwEventState;
    [range(0, 36)] unsigned long         cbAtr;
    byte                                  rgbAtr[36];
} ReaderState_Common_Call;

typedef struct _ReaderStateA
{
    [string] const char *                szReader;
    ReaderState_Common_Call             Common;
} ReaderStateA;

typedef struct ReaderStateW
{
    [string] const wchar_t *            szReader;
    ReaderState_Common_Call             Common;
} ReaderStateW;

typedef struct ReaderState_Return
{
    unsigned long                        dwCurrentState;
    unsigned long                        dwEventState;
    [range(0, 36)] unsigned long         cbAtr;
    byte                                  rgbAtr[36];
} ReaderState_Return;

```



```

typedef struct _GetStatusChangeA_Call
{
    REDIR_SCARDCONTEXT Context;
    unsigned long dwTimeOut;
    [range(0, 11)] unsigned long cReaders;
    [size_is(cReaders)] ReaderStateA *rgReaderStates;
} GetStatusChangeA_Call;

typedef struct LocateCardsA_Call {
    REDIR_SCARDCONTEXT Context;
    [range(0, 65536)] unsigned long cBytes;
    [size_is(cBytes)] const byte * mszCards;
    [range(0, 10)] unsigned long cReaders;
    [size_is(cReaders)] ReaderStateA * rgReaderStates;
} LocateCardsA_Call;

typedef struct _LocateCardsW_Call
{
    REDIR_SCARDCONTEXT Context;
    [range(0, 65536)] unsigned long cBytes;
    [size_is(cBytes)] const byte *mszCards;
    [range(0, 10)] unsigned long cReaders;
    [size_is(cReaders)] ReaderStateW *rgReaderStates;
} LocateCardsW_Call;

typedef struct LocateCards_ATRMask
{
    [range(0, 36)] unsigned long cbAtr;
    byte rgbAtr[36];
    byte rgbMask[36];
} LocateCards_ATRMask;

typedef struct LocateCardsByATRA_Call
{
    REDIR_SCARDCONTEXT Context;
    [range(0, 1000)] unsigned long cAtrs;
    [size_is(cAtrs)] LocateCards_ATRMask *rgAtrMasks;
    [range(0, 10)] unsigned long cReaders;
    [size_is(cReaders)] ReaderStateA *rgReaderStates;
} LocateCardsByATRA_Call;

typedef struct _LocateCardsByATRW_Call
{
    REDIR_SCARDCONTEXT Context;
    [range(0, 1000)] unsigned long cAtrs;
    [size_is(cAtrs)] LocateCards_ATRMask *rgAtrMasks;
    [range(0, 10)] unsigned long cReaders;
    [size_is(cReaders)] ReaderStateW *rgReaderStates;
} LocateCardsByATRW_Call;

typedef struct GetStatusChange_Return
{
    long ReturnCode;
    [range(0, 10)] unsigned long cReaders;
    [size_is(cReaders)] ReaderState_Return *rgReaderStates;
} LocateCards_Return, GetStatusChange_Return;

typedef struct _GetStatusChangeW_Call
{
    REDIR_SCARDCONTEXT Context;
    unsigned long dwTimeOut;
    [range(0, 11)] unsigned long cReaders;
    [size_is(cReaders)] ReaderStateW *rgReaderStates;
}

```

```

} GetStatusChangeW_Call;

typedef struct _Connect_Common
{
    REDIR_SCARDCONTEXT          Context;
    unsigned long               dwShareMode;
    unsigned long               dwPreferredProtocols;
} Connect_Common;

typedef struct _ConnectA_Call
{
    [string] const char *      szReader;
    Connect_Common             Common;
} ConnectA_Call;

typedef struct _ConnectW_Call
{
    [string] const wchar_t *   szReader;
    Connect_Common             Common;
} ConnectW_Call;

typedef struct _Connect_Return
{
    long                       ReturnCode;
    REDIR_SCARDHANDLE          hCard;
    unsigned long              dwActiveProtocol;
} Connect_Return;

typedef struct Reconnect_Call
{
    REDIR_SCARDHANDLE          hCard;
    unsigned long              dwShareMode;
    unsigned long              dwPreferredProtocols;
    unsigned long              dwInitialization;
} Reconnect_Call;

typedef struct Reconnect_Return
{
    long                       ReturnCode;
    unsigned long              dwActiveProtocol;
} Reconnect_Return;

typedef struct _HCardAndDisposition_Call
{
    REDIR_SCARDHANDLE          hCard;
    unsigned long              dwDisposition;
} HCardAndDisposition_Call;

typedef struct _State_Call
{
    REDIR_SCARDHANDLE          hCard;
    long                       fpbAtrIsNULL;
    unsigned long              cbAtrLen;
    // EDITOR'S NOTE: Can be 0xFFFFFFFF
} State_Call;

typedef struct State_Return
{
    long                       ReturnCode;
    unsigned long              dwState;
    unsigned long              dwProtocol;
    [range(0, 36)]             cbAtrLen;
    [unique] [size is(cbAtrLen)] byte *rgAtr;
} State_Return;

typedef struct _Status_Call

```

```

{
    REDIR_SCARDHANDLE          hCard;
    long                       fmszReaderNamesIsNULL;
    unsigned long              cchReaderLen;
    unsigned long              cbAtrLen;
} Status Call;
typedef struct _Status_Return
{
    long                       ReturnCode;
    [range(0, 65536)]          unsigned long   cBytes;
    [unique] [size is(cBytes)] byte          *mszReaderNames;
    unsigned long              dwState;
    unsigned long              dwProtocol;
    byte                       pbAtr[32];
    [range(0, 32)]            unsigned long   cbAtrLen;
} Status_Return;

typedef struct SCardIO Request
{
    unsigned long              dwProtocol;
    [range(0, 1024)]          unsigned long   cbExtraBytes;
    [unique] [size is(cbExtraBytes)] byte    *pbExtraBytes;
} SCardIO_Request;
typedef struct _Transmit_Call
{
    REDIR_SCARDHANDLE          hCard;
    SCardIO_Request            ioSendPci;
    [range(0, 66560)]          unsigned long   cbSendLength;
    [size_is(cbSendLength)]   const byte     *pbSendBuffer;
    [unique]                   SCardIO Request *pioRecvPci;
    long                       fpbRecvBufferIsNULL;
    unsigned long              cbRecvLength;
} Transmit Call;
typedef struct _Transmit_Return
{
    long                       ReturnCode;
    [unique]                   SCardIO_Request *pioRecvPci;
    [range(0, 66560)]          unsigned long   cbRecvLength;
    [unique] [size is(cbRecvLength)] byte     *pbRecvBuffer;
} Transmit_Return;

typedef struct _GetTransmitCount_Call
{
    REDIR_SCARDHANDLE          hCard;
} GetTransmitCount Call;

typedef struct GetTransmitCount Return
{
    long                       ReturnCode;
    unsigned long              cTransmitCount;
} GetTransmitCount Return;

typedef struct Control Call
{
    REDIR_SCARDHANDLE          hCard;
    unsigned long              dwControlCode;
    [range(0, 66560)]          unsigned long   cbInBufferSize;
    [unique] [size is(cbInBufferSize)] const byte *pvInBuffer;
    long                       fpvOutBufferIsNULL;
    unsigned long              cbOutBufferSize;
} Control_Call;

typedef struct _Control_Return
{
    long                       ReturnCode;
    [range(0, 66560)]          unsigned long   cbOutBufferSize;
    [unique] [size_is(cbOutBufferSize)] byte   *pvOutBuffer;
} Control_Return;

```

```

typedef struct _GetAttrib_Call
{
    REDIR_SCARDHANDLE          hCard;
    unsigned long              dwAttrId;
    long                      fpbAttrIsNULL;
    unsigned long              cbAttrLen;
} GetAttrib_Call;

typedef struct _GetAttrib_Return
{
    long                      ReturnCode;
    [range(0, 65536)]         unsigned long  cbAttrLen;
    [unique] [size_is(cbAttrLen)] byte      *pbAttr;
} GetAttrib_Return;

typedef struct SetAttrib_Call
{
    REDIR_SCARDHANDLE          hCard;
    unsigned long              dwAttrId;
    [range(0, 65536)]         unsigned long  cbAttrLen;
    [size_is(cbAttrLen)]     const byte     *pbAttr;
} SetAttrib_Call;

typedef struct _ReadCache_Common
{
    REDIR_SCARDCONTEXT        Context;
    UUID                      *CardIdentifier;
    unsigned long              FreshnessCounter;
    long                      fpbDataIsNULL;
    unsigned long              cbDataLen;
} ReadCache_Common;

typedef struct ReadCacheA_Call
{
    [string] char *           szLookupName;
    ReadCache_Common         Common;
} ReadCacheA_Call;

typedef struct ReadCacheW_Call
{
    [string] wchar_t *       szLookupName;
    ReadCache_Common         Common;
} ReadCacheW_Call;

typedef struct ReadCache_Return
{
    long                      ReturnCode;
    [range(0, 65536)]         unsigned long  cbDataLen;
    [unique] [size_is(cbDataLen)] byte      *pbData;
} ReadCache_Return;

typedef struct _WriteCache_Common
{
    REDIR_SCARDCONTEXT        Context;
    UUID                      *CardIdentifier;
    unsigned long              FreshnessCounter;
    [range(0, 65536)]         unsigned long  cbDataLen;
    [unique] [size_is(cbDataLen)] byte      *pbData;
} WriteCache_Common;

typedef struct _WriteCacheA_Call
{
    [string] char *           szLookupName;
    WriteCache_Common         Common;
} WriteCacheA_Call;

typedef struct _WriteCacheW_Call
{

```

```
    [string] wchar_t *      szLookupName;  
        WriteCache_Common  Common;  
} WriteCacheW_Call;  
}
```

7 Appendix B: Product Behavior

The information in this specification is applicable to the following Microsoft products or supplemental software. References to product versions include updates to those products.

- Windows XP operating system
- Windows Server 2003 operating system
- Windows Vista operating system
- Windows Server 2008 operating system
- Windows 7 operating system
- Windows Server 2008 R2 operating system
- Windows 8 operating system
- Windows Server 2012 operating system
- Windows 8.1 operating system
- Windows Server 2012 R2 operating system
- Windows 10 operating system
- Windows Server 2016 operating system
- Windows Server operating system
- Windows Server 2019 operating system
- Windows Server 2022 operating system

Exceptions, if any, are noted in this section. If an update version, service pack or Knowledge Base (KB) number appears with a product name, the behavior changed in that update. The new behavior also applies to subsequent updates unless otherwise specified. If a product edition appears with the product version, behavior is different in that product edition.

Unless otherwise specified, any statement of optional behavior in this specification that is prescribed using the terms "SHOULD" or "SHOULD NOT" implies product behavior in accordance with the SHOULD or SHOULD NOT prescription. Unless otherwise specified, the term "MAY" implies that the product does not follow the prescription.

[<1> Section 1.7](#): The Windows XP and Windows Server 2003 versions always use SCREDIR_VERSION_XP. Windows Vista and Windows Server 2008 are always SCREDIR_VERSION_LONGHORN. All other versions use SCREDIR_VERSION_WINDOWS_8.

[<2> Section 3.1.4](#): Windows XP and Windows Server 2003 implement function numbers 5 through 58. Windows Vista, Windows Server 2008, Windows 7, and Windows Server 2008 R2 implement function numbers 5 through 64. All other versions implement 5 through 66.

8 Change Tracking

This section identifies changes that were made to this document since the last release. Changes are classified as Major, Minor, or None.

The revision class **Major** means that the technical content in the document was significantly revised. Major changes affect protocol interoperability or implementation. Examples of major changes are:

- A document revision that incorporates changes to interoperability requirements.
- A document revision that captures changes to protocol functionality.

The revision class **Minor** means that the meaning of the technical content was clarified. Minor changes do not affect protocol interoperability or implementation. Examples of minor changes are updates to clarify ambiguity at the sentence, paragraph, or table level.

The revision class **None** means that no new technical changes were introduced. Minor editorial and formatting changes may have been made, but the relevant technical content is identical to the last released version.

The changes made to this document are listed in the following table. For more information, please contact dochelp@microsoft.com.

Section	Description	Revision class
Z Appendix B: Product Behavior	Updated for this version of Windows Server.	Major

9 Index

A

Abstract data model
 [client](#) 63
 [server](#) 50
[Access Mode Flags packet](#) 43
[Applicability](#) 16

B

[Begin transaction call example](#) 75
[Begin transaction return example](#) 76

C

[Capability negotiation](#) 16
[Card Reader State packet](#) 42
[Change tracking](#) 87
Client
 [abstract data model](#) 63
 [higher-layer triggered events](#) 63
 [initialization](#) 63
 [local events](#) 72
 [message processing](#) 63
 [Processing Incoming Replies method](#) 63
 [Sending Outgoing Messages method](#) 63
 [sequencing rules](#) 63
 structures ([section 2.2.1](#) 18, [section 2.2.3](#) 36)
 [timer events](#) 72
 [timers](#) 63
[Common data types](#) 18
[Connect call example](#) 75
[Connect return example](#) 75
[Connect Common structure](#) 19
[Connect Return structure](#) 39
[ConnectA Call structure](#) 28
[ConnectW Call structure](#) 28
[Context Call structure](#) 22
[ContextAndStringA Call structure](#) 24
[ContextAndStringW Call structure](#) 24
[ContextAndTwoStringA Call structure](#) 25
[ContextAndTwoStringW Call structure](#) 26
[Control Call structure](#) 32
[Control Return structure](#) 38

D

Data model - abstract
 [client](#) 63
 [server](#) 50
[Data types](#) 18
 [common - overview](#) 18
[Disconnect call example](#) 77
[Disconnect return example](#) 77

E

[End transaction call example](#) 76
[End transaction return example](#) 76
[Establish context call example](#) 74
[Establish context return example](#) 74

[EstablishContext Call structure](#) 22
[EstablishContext Return structure](#) 37

Events

[local - client](#) 72
[local - server](#) 62
[timer - client](#) 72
[timer - server](#) 62

Examples

[begin transaction call](#) 75
[begin transaction call example](#) 75
[begin transaction return](#) 76
[begin transaction return example](#) 76
[connect call](#) 75
[connect call example](#) 75
[connect return](#) 75
[connect return example](#) 75
[disconnect call](#) 77
[disconnect call example](#) 77
[disconnect return](#) 77
[disconnect return example](#) 77
[end transaction call](#) 76
[end transaction call example](#) 76
[end transaction return](#) 76
[end transaction return example](#) 76
[establish context call](#) 74
[establish context call example](#) 74
[establish context return](#) 74
[establish context return example](#) 74
[get status change call](#) 74
[get status change call example](#) 74
[get status change return](#) 75
[get status change return example](#) 75
[list reader call example](#) 74
[list reader return example](#) 74
[list readers call](#) 74
[list readers return](#) 74
[overview](#) 73
[release context call](#) 77
[release context call example](#) 77
[release context return](#) 77
[release context return example](#) 77
[status call](#) 76
[status call example](#) 76
[status return](#) 76
[status return example](#) 76

F

[Fields - vendor-extensible](#) 16
[Full IDL](#) 79

G

[Get status change call example](#) 74
[Get status change return example](#) 75
[GetAttrib Call structure](#) 32
[GetAttrib Return structure](#) 41
[GetDeviceTypeId Call structure](#) 36
[GetDeviceTypeId Return structure](#) 42
[GetReaderIcon Call structure](#) 36
[GetReaderIcon Return structure](#) 41

[GetStatusChange_Return](#) 38
[GetStatusChangeA_Call structure](#) 27
[GetStatusChangeW_Call structure](#) 28
[GetTransmitCount_Call structure](#) 35
[GetTransmitCount_Return structure](#) 41
[Glossary](#) 10

H

[HCardAndDisposition_Call structure](#) 29
[Higher-layer triggered events - client](#) 63

I

[IDL](#) 79
[Implementer - security considerations](#) 78
[Implementers - security considerations](#) 78
[Index of security parameters](#) 78
[Informative references](#) 13
Initialization
 [client](#) 63
 [server](#) 50
[Introduction](#) 10

L

[List reader call example](#) 74
[List reader return example](#) 74
[List readers call example](#) 74
[List readers return example](#) 74
[ListReaderGroups_Call structure](#) 23
[ListReaderGroups_Return structure](#) 37
[ListReaders_Call structure](#) 23
[ListReaders_Return](#) 37
Local events
 [client](#) 72
 [server](#) 62
[LocateCards_ATRMask structure](#) 19
[LocateCards_Return structure](#) 38
[LocateCardsA_Call structure](#) 26
[LocateCardsByATRA_Call structure](#) 33
[LocateCardsByATRW_Call structure](#) 34
[LocateCardsW_Call structure](#) 27
[Long_Return structure](#) 37

M

Message processing
 [client](#) 63
 [server](#) 50
Messages
 [common data types](#) 18
 [names](#) 64
 [overview](#) 18
 [processing incoming replies](#) 63
 [sending outgoing messages](#) 63
 [transport](#) 18
Methods
 [Processing Incoming Replies](#) 63
 [SCARD_IOCTL_ACCESSSTARTEDEVENT \(IOCTL 0x000900E0\)](#) 54
 [SCARD_IOCTL_ADDREADERTOGROUPA \(IOCTL 0x00090070\)](#) 57
 [SCARD_IOCTL_ADDREADERTOGROUPW \(IOCTL 0x00090074\)](#) 57

[SCARD_IOCTL_BEGINTRANSACTION \(IOCTL 0x000900BC\)](#) 59
[SCARD_IOCTL_CANCEL \(IOCTL 0x000900A8\)](#) 59
[SCARD_IOCTL_CONNECTA \(IOCTL 0x000900AC\)](#) 59
[SCARD_IOCTL_CONNECTW \(IOCTL 0x000900B0\)](#) 59
[SCARD_IOCTL_CONTROL \(IOCTL 0x000900D4\)](#) 60
[SCARD_IOCTL_DISCONNECT \(IOCTL 0x000900B8\)](#) 59
[SCARD_IOCTL_ENDTRANSACTION \(IOCTL 0x000900C0\)](#) 59
[SCARD_IOCTL_ESTABLISHCONTEXT \(IOCTL 0x00090014\)](#) 54
[SCARD_IOCTL_FORGETREADER \(IOCTL 0x00090068\)](#) 56
[SCARD_IOCTL_FORGETREADERGROUPA \(IOCTL 0x00090058\)](#) 56
[SCARD_IOCTL_FORGETREADERGROUPW \(IOCTL 0x0009005C\)](#) 56
[SCARD_IOCTL_FORGETREADERW \(IOCTL 0x0009006C\)](#) 57
[SCARD_IOCTL_GETATTRIB \(IOCTL 0x000900D8\)](#) 60
[SCARD_IOCTL_GETDEVICETYPEID \(IOCTL 0x00090108\)](#) 62
[SCARD_IOCTL_GETREADERICON \(IOCTL 0x00090104\)](#) 62
[SCARD_IOCTL_GETSTATUSCHANGEA \(IOCTL 0x000900A0\)](#) 58
[SCARD_IOCTL_GETSTATUSCHANGEW \(IOCTL 0x000900A4\)](#) 58
[SCARD_IOCTL_GETTRANSMITCOUNT \(IOCTL 0x00090100\)](#) 61
[SCARD_IOCTL INTRODUCEREADERA \(IOCTL 0x00090060\)](#) 56
[SCARD_IOCTL INTRODUCEREADERGROUPA \(IOCTL 0x00090050\)](#) 55
[SCARD_IOCTL INTRODUCEREADERGROUPW \(IOCTL 0x00090054\)](#) 56
[SCARD_IOCTL INTRODUCEREADERW \(IOCTL 0x00090064\)](#) 56
[SCARD_IOCTL_ISVALIDCONTEXT \(IOCTL 0x0009001C\)](#) 54
[SCARD_IOCTL_LISTREADERGROUPSA \(IOCTL 0x00090020\)](#) 55
[SCARD_IOCTL_LISTREADERGROUPSW \(IOCTL 0x00090024\)](#) 55
[SCARD_IOCTL_LISTREADERSA \(IOCTL 0x00090028\)](#) 55
[SCARD_IOCTL_LISTREADERSW \(IOCTL 0x0009002C\)](#) 55
[SCARD_IOCTL LOCATECARDSA \(IOCTL 0x00090098\)](#) 57
[SCARD_IOCTL LOCATECARDSBYATRA \(IOCTL 0x000900E8\)](#) 58
[SCARD_IOCTL LOCATECARDSBYATRW \(IOCTL 0x000900EC\)](#) 58
[SCARD_IOCTL LOCATECARDSW \(IOCTL 0x0009009C\)](#) 58
[SCARD_IOCTL_READCACHEA \(IOCTL 0x000900F0\)](#) 61
[SCARD_IOCTL_READCACHEW \(IOCTL 0x000900F4\)](#) 61

[SCARD_IOCTL_RECONNECT \(IOCTL 0x000900B4\)](#)
60
[SCARD_IOCTL_RELEASECONTEXT \(IOCTL 0x00090018\)](#) 54
[SCARD_IOCTL_RELEASESTARTEDEVENT](#) 62
[SCARD_IOCTL_REMOVEREADERFROMGROUPA \(IOCTL 0x00090078\)](#) 57
[SCARD_IOCTL_REMOVEREADERFROMGROUPW \(IOCTL 0x0009007C\)](#) 57
[SCARD_IOCTL_SETATTRIB \(IOCTL 0x000900DC\)](#)
61
[SCARD_IOCTL_STATE \(IOCTL 0x000900C4\)](#) 61
[SCARD_IOCTL_STATUSA \(IOCTL 0x000900C8\)](#) 60
[SCARD_IOCTL_STATUSW \(IOCTL 0x000900CC\)](#) 60
[SCARD_IOCTL_TRANSMIT \(IOCTL 0x000900D0\)](#)
60
[SCARD_IOCTL_WRITECACHEA \(IOCTL 0x000900F8\)](#) 62
[SCARD_IOCTL_WRITECACHEW \(IOCTL 0x000900FC\)](#) 62
[Sending Outgoing Messages](#) 63

N

[Normative references](#) 12

O

[Outgoing messages - sending](#) 63
[Overview \(synopsis\)](#) 13

P

[Parameters - security](#) 78
[Parameters - security index](#) 78
[Preconditions](#) 15
[Prerequisites](#) 15
[Processing Incoming Replies method](#) 63
[Product behavior](#) 86
Protocol Details
[overview](#) 50
[Protocol Identifier packet](#) 42

R

[ReadCache_Common structure](#) 21
[ReadCache_Return structure](#) 36
[ReadCacheA_Call structure](#) 34
[ReadCacheW_Call structure](#) 34
[Reader_State packet](#) 44
[ReaderState_Common_Call structure](#) 19
[ReaderState_Return structure](#) 21
[ReaderStateA structure](#) 20
[ReaderStateW structure](#) 20
[Reconnect_Call structure](#) 28
[Reconnect_Return structure](#) 38
[REDIR_SCARDCONTEXT structure](#) 18
[REDIR_SCARDHANDLE structure](#) 18
[References](#) 12
[informative](#) 13
[normative](#) 12
[Relationship to other protocols](#) 15
[Release context call example](#) 77
[Release context return example](#) 77
[Replies - processing](#) 63

[Return_Code packet](#) 45

S

[SCARD_IOCTL_ACCESSSTARTEDEVENT \(IOCTL 0x000900E0\)](#) method 54
[SCARD_IOCTL_ADDREADERTOGROUPA \(IOCTL 0x00090070\)](#) method 57
[SCARD_IOCTL_ADDREADERTOGROUPW \(IOCTL 0x00090074\)](#) method 57
[SCARD_IOCTL_BEGINTRANSACTION \(IOCTL 0x000900BC\)](#) method 59
[SCARD_IOCTL_CANCEL \(IOCTL 0x000900A8\)](#) method 59
[SCARD_IOCTL_CONNECTA \(IOCTL 0x000900AC\)](#) method 59
[SCARD_IOCTL_CONNECTW \(IOCTL 0x000900B0\)](#) method 59
[SCARD_IOCTL_CONTROL \(IOCTL 0x000900D4\)](#) method 60
[SCARD_IOCTL_DISCONNECT \(IOCTL 0x000900B8\)](#) method 59
[SCARD_IOCTL_ENDTRANSACTION \(IOCTL 0x000900C0\)](#) method 59
[SCARD_IOCTL_ESTABLISHCONTEXT \(IOCTL 0x00090014\)](#) method 54
[SCARD_IOCTL_FORGETREADER \(IOCTL 0x00090068\)](#) method 56
[SCARD_IOCTL_FORGETREADERGROUPA \(IOCTL 0x00090058\)](#) method 56
[SCARD_IOCTL_FORGETREADERGROUPW \(IOCTL 0x0009005C\)](#) method 56
[SCARD_IOCTL_FORGETREADERW \(IOCTL 0x0009006C\)](#) method 57
[SCARD_IOCTL_GETATTRIB \(IOCTL 0x000900D8\)](#) method 60
[SCARD_IOCTL_GETDEVICETYPEID \(IOCTL 0x00090108\)](#) method 62
[SCARD_IOCTL_GETREADERICON \(IOCTL 0x00090104\)](#) method 62
[SCARD_IOCTL_GETSTATUSCHANGEA \(IOCTL 0x000900A0\)](#) method 58
[SCARD_IOCTL_GETSTATUSCHANGEW \(IOCTL 0x000900A4\)](#) method 58
[SCARD_IOCTL_GETTRANSMITCOUNT \(IOCTL 0x00090100\)](#) method 61
[SCARD_IOCTL_INTRODUCEREADERA \(IOCTL 0x00090060\)](#) method 56
[SCARD_IOCTL_INTRODUCEREADERGROUPA \(IOCTL 0x00090050\)](#) method 55
[SCARD_IOCTL_INTRODUCEREADERGROUPW \(IOCTL 0x00090054\)](#) method 56
[SCARD_IOCTL_INTRODUCEREADERW \(IOCTL 0x00090064\)](#) method 56
[SCARD_IOCTL_ISVALIDCONTEXT \(IOCTL 0x0009001C\)](#) method 54
[SCARD_IOCTL_LISTREADERGROUPSA \(IOCTL 0x00090020\)](#) method 55
[SCARD_IOCTL_LISTREADERGROUPSW \(IOCTL 0x00090024\)](#) method 55
[SCARD_IOCTL_LISTREADERSA \(IOCTL 0x00090028\)](#) method 55
[SCARD_IOCTL_LISTREADERSW \(IOCTL 0x0009002C\)](#) method 55

[SCARD_IOCTL_LOCATECARDSA \(IOCTL 0x00090098\) method 57](#)
[SCARD_IOCTL_LOCATECARDSBYATRA \(IOCTL 0x000900E8\) method 58](#)
[SCARD_IOCTL_LOCATECARDSBYATRW \(IOCTL 0x000900EC\) method 58](#)
[SCARD_IOCTL_LOCATECARDSW \(IOCTL 0x0009009C\) method 58](#)
[SCARD_IOCTL_READCACHEA \(IOCTL 0x000900F0\) method 61](#)
[SCARD_IOCTL_READCACHEW \(IOCTL 0x000900F4\) method 61](#)
[SCARD_IOCTL_RECONNECT \(IOCTL 0x000900B4\) method 60](#)
[SCARD_IOCTL_RELEASECONTEXT \(IOCTL 0x00090018\) method 54](#)
[SCARD_IOCTL_RELEASESTARTEDEVENT method 62](#)
[SCARD_IOCTL_REMOVEREADERFROMGROUPA \(IOCTL 0x00090078\) method 57](#)
[SCARD_IOCTL_REMOVEREADERFROMGROUPW \(IOCTL 0x0009007C\) method 57](#)
[SCARD_IOCTL_SETATTRIB \(IOCTL 0x000900DC\) method 61](#)
[SCARD_IOCTL_STATE \(IOCTL 0x000900C4\) method 61](#)
[SCARD_IOCTL_STATUSA \(IOCTL 0x000900C8\) method 60](#)
[SCARD_IOCTL_STATUSW \(IOCTL 0x000900CC\) method 60](#)
[SCARD_IOCTL_TRANSMIT \(IOCTL 0x000900D0\) method 60](#)
[SCARD_IOCTL_WRITECACHEA \(IOCTL 0x000900F8\) method 62](#)
[SCARD_IOCTL_WRITECACHEW \(IOCTL 0x000900FC\) method 62](#)
[ScardAccessStartedEvent Call packet 35](#)
[SCardIO Request structure 20](#)
[Security 78](#)
 [implementer considerations 78](#)
 [parameter index 78](#)
[Sending Outgoing Messages method 63](#)
[Sequencing rules](#)
 [client 63](#)
 [server 50](#)
[Server](#)
 [abstract data model 50](#)
 [initialization 50](#)
 [local events 62](#)
 [message processing 50](#)
 [SCARD_IOCTL_ACCESSSTARTEDEVENT \(IOCTL 0x000900E0\) method 54](#)
 [SCARD_IOCTL_ADDREADERTOGROUPA \(IOCTL 0x00090070\) method 57](#)
 [SCARD_IOCTL_ADDREADERTOGROUPW \(IOCTL 0x00090074\) method 57](#)
 [SCARD_IOCTL_BEGINTRANSACTION \(IOCTL 0x000900BC\) method 59](#)
 [SCARD_IOCTL_CANCEL \(IOCTL 0x000900A8\) method 59](#)
 [SCARD_IOCTL_CONNECTA \(IOCTL 0x000900AC\) method 59](#)
 [SCARD_IOCTL_CONNECTW \(IOCTL 0x000900B0\) method 59](#)
 [SCARD_IOCTL_CONTROL \(IOCTL 0x000900D4\) method 60](#)
 [SCARD_IOCTL_DISCONNECT \(IOCTL 0x000900B8\) method 59](#)
 [SCARD_IOCTL_ENDTRANSACTION \(IOCTL 0x000900C0\) method 59](#)
 [SCARD_IOCTL_ESTABLISHCONTEXT \(IOCTL 0x00090014\) method 54](#)
 [SCARD_IOCTL_FORGETREADER \(IOCTL 0x00090068\) method 56](#)
 [SCARD_IOCTL_FORGETREADERGROUPA \(IOCTL 0x00090058\) method 56](#)
 [SCARD_IOCTL_FORGETREADERGROUPW \(IOCTL 0x0009005C\) method 56](#)
 [SCARD_IOCTL_FORGETREADERW \(IOCTL 0x0009006C\) method 57](#)
 [SCARD_IOCTL_GETATTRIB \(IOCTL 0x000900D8\) method 60](#)
 [SCARD_IOCTL_GETDEVICETYPEID \(IOCTL 0x00090108\) method 62](#)
 [SCARD_IOCTL_GETREADERICON \(IOCTL 0x00090104\) method 62](#)
 [SCARD_IOCTL_GETSTATUSCHANGEA \(IOCTL 0x000900A0\) method 58](#)
 [SCARD_IOCTL_GETSTATUSCHANGEW \(IOCTL 0x000900A4\) method 58](#)
 [SCARD_IOCTL_GETTRANSMITCOUNT \(IOCTL 0x00090100\) method 61](#)
 [SCARD_IOCTL_INTRODUCEREADERA \(IOCTL 0x00090060\) method 56](#)
 [SCARD_IOCTL_INTRODUCEREADERGROUPA \(IOCTL 0x00090050\) method 55](#)
 [SCARD_IOCTL_INTRODUCEREADERGROUPW \(IOCTL 0x00090054\) method 56](#)
 [SCARD_IOCTL_INTRODUCEREADERW \(IOCTL 0x00090064\) method 56](#)
 [SCARD_IOCTL_ISVALIDCONTEXT \(IOCTL 0x0009001C\) method 54](#)
 [SCARD_IOCTL_LISTREADERGROUPSA \(IOCTL 0x00090020\) method 55](#)
 [SCARD_IOCTL_LISTREADERGROUPSW \(IOCTL 0x00090024\) method 55](#)
 [SCARD_IOCTL_LISTREADERSA \(IOCTL 0x00090028\) method 55](#)
 [SCARD_IOCTL_LISTREADERSW \(IOCTL 0x0009002C\) method 55](#)
 [SCARD_IOCTL_LOCATECARDSA \(IOCTL 0x00090098\) method 57](#)
 [SCARD_IOCTL_LOCATECARDSBYATRA \(IOCTL 0x000900E8\) method 58](#)
 [SCARD_IOCTL_LOCATECARDSBYATRW \(IOCTL 0x000900EC\) method 58](#)
 [SCARD_IOCTL_LOCATECARDSW \(IOCTL 0x0009009C\) method 58](#)
 [SCARD_IOCTL_READCACHEA \(IOCTL 0x000900F0\) method 61](#)
 [SCARD_IOCTL_READCACHEW \(IOCTL 0x000900F4\) method 61](#)
 [SCARD_IOCTL_RECONNECT \(IOCTL 0x000900B4\) method 60](#)
 [SCARD_IOCTL_RELEASECONTEXT \(IOCTL 0x00090018\) method 54](#)
 [SCARD_IOCTL_RELEASESTARTEDEVENT method 62](#)
 [SCARD_IOCTL_REMOVEREADERFROMGROUPA \(IOCTL 0x00090078\) method 57](#)
 [SCARD_IOCTL_REMOVEREADERFROMGROUPW \(IOCTL 0x0009007C\) method 57](#)

- [SCARD_IOCTL_SETATTRIB \(IOCTL 0x000900DC\)](#)
 - [method](#) 61
- [SCARD_IOCTL_STATE \(IOCTL 0x000900C4\)](#)
 - [method](#) 61
- [SCARD_IOCTL_STATUSA \(IOCTL 0x000900C8\)](#)
 - [method](#) 60
- [SCARD_IOCTL_STATUSW \(IOCTL 0x000900CC\)](#)
 - [method](#) 60
- [SCARD_IOCTL_TRANSMIT \(IOCTL 0x000900D0\)](#)
 - [method](#) 60
- [SCARD_IOCTL_WRITECACHEA \(IOCTL 0x000900F8\)](#) [method](#) 62
- [SCARD_IOCTL_WRITECACHEW \(IOCTL 0x000900FC\)](#) [method](#) 62
- [sequencing rules](#) 50
- [structures](#) ([section 2.2.1](#) 18, [section 2.2.2](#) 22)
- [timer events](#) 62
- [timers](#) 50
- [SetAttrib Call structure](#) 33
- [Standards assignments](#) 16
- [State Call structure](#) 30
- [State Return structure](#) 39
- [Status call example](#) 76
- [Status return example](#) 76
- [Status Call structure](#) 30
- [Status Return structure](#) 39
- Structures
 - [client](#) ([section 2.2.1](#) 18, [section 2.2.3](#) 36)
 - [server](#) ([section 2.2.1](#) 18, [section 2.2.2](#) 22)

T

- Timer events
 - [client](#) 72
 - [server](#) 62
- Timers
 - [client](#) 63
 - [server](#) 50
- [Tracking changes](#) 87
- [Transmit Call structure](#) 31
- [Transmit Return structure](#) 40
- [Transport](#) 18
- [Transport - message](#) 18
- [Triggered events - higher-layer - client](#) 63

V

- [Vendor-extensible fields](#) 16
- [Versioning](#) 16

W

- [WriteCache Common structure](#) 21
- [WriteCacheA Call structure](#) 35
- [WriteCacheW Call structure](#) 35