

[MS-RDPESC-Diff]:

Remote Desktop Protocol: Smart Card Virtual Channel Extension

Intellectual Property Rights Notice for Open Specifications Documentation

- **Technical Documentation.** Microsoft publishes Open Specifications documentation (“this documentation”) for protocols, file formats, data portability, computer languages, and standards support. Additionally, overview documents cover inter-protocol relationships and interactions.
- **Copyrights.** This documentation is covered by Microsoft copyrights. Regardless of any other terms that are contained in the terms of use for the Microsoft website that hosts this documentation, you can make copies of it in order to develop implementations of the technologies that are described in this documentation and can distribute portions of it in your implementations that use these technologies or in your documentation as necessary to properly document the implementation. You can also distribute in your implementation, with or without modification, any schemas, IDLs, or code samples that are included in the documentation. This permission also applies to any documents that are referenced in the Open Specifications documentation.
- **No Trade Secrets.** Microsoft does not claim any trade secret rights in this documentation.
- **Patents.** Microsoft has patents that might cover your implementations of the technologies described in the Open Specifications documentation. Neither this notice nor Microsoft's delivery of this documentation grants any licenses under those patents or any other Microsoft patents. However, a given Open Specifications document might be covered by the Microsoft [Open Specifications Promise](#) or the [Microsoft Community Promise](#). If you would prefer a written license, or if the technologies described in this documentation are not covered by the Open Specifications Promise or Community Promise, as applicable, patent licenses are available by contacting iplg@microsoft.com.
- **License Programs.** To see all of the protocols in scope under a specific license program and the associated patents, visit the [Patent Map](#).
- **Trademarks.** The names of companies and products contained in this documentation might be covered by trademarks or similar intellectual property rights. This notice does not grant any licenses under those rights. For a list of Microsoft trademarks, visit www.microsoft.com/trademarks.
- **Fictitious Names.** The example companies, organizations, products, domain names, email addresses, logos, people, places, and events that are depicted in this documentation are fictitious. No association with any real company, organization, product, domain name, email address, logo, person, place, or event is intended or should be inferred.

Reservation of Rights. All other rights are reserved, and this notice does not grant any rights other than as specifically described above, whether by implication, estoppel, or otherwise.

Tools. The Open Specifications documentation does not require the use of Microsoft programming tools or programming environments in order for you to develop an implementation. If you have access to Microsoft programming tools and environments, you are free to take advantage of them. Certain Open Specifications documents are intended for use in conjunction with publicly available standards specifications and network programming art and, as such, assume that the reader either is familiar with the aforementioned material or has immediate access to it.

Support. For questions and support, please contact dochelp@microsoft.com.

Revision Summary

Date	Revision History	Revision Class	Comments
6/1/2007	1.0	Major	Updated and revised the technical content.
7/3/2007	1.0.1	Editorial	Changed language and formatting in the technical content.
7/20/2007	1.0.2	Editorial	Changed language and formatting in the technical content.
8/10/2007	1.0.3	Editorial	Changed language and formatting in the technical content.
9/28/2007	1.0.4	Editorial	Changed language and formatting in the technical content.
10/23/2007	1.0.5	Editorial	Changed language and formatting in the technical content.
11/30/2007	2.0	Major	Normative reference.
1/25/2008	2.0.1	Editorial	Changed language and formatting in the technical content.
3/14/2008	2.0.2	Editorial	Changed language and formatting in the technical content.
5/16/2008	2.0.3	Editorial	Changed language and formatting in the technical content.
6/20/2008	2.0.4	Editorial	Changed language and formatting in the technical content.
7/25/2008	2.0.5	Editorial	Changed language and formatting in the technical content.
8/29/2008	2.0.6	Editorial	Changed language and formatting in the technical content.
10/24/2008	2.0.7	Editorial	Changed language and formatting in the technical content.
12/5/2008	3.0	Major	Updated and revised the technical content.
1/16/2009	3.0.1	Editorial	Changed language and formatting in the technical content.
2/27/2009	3.0.2	Editorial	Changed language and formatting in the technical content.
4/10/2009	3.0.3	Editorial	Changed language and formatting in the technical content.
5/22/2009	4.0	Major	Updated and revised the technical content.
7/2/2009	4.0.1	Editorial	Changed language and formatting in the technical content.
8/14/2009	4.0.2	Editorial	Changed language and formatting in the technical content.
9/25/2009	4.1	Minor	Clarified the meaning of the technical content.
11/6/2009	4.1.1	Editorial	Changed language and formatting in the technical content.
12/18/2009	5.0	Major	Updated and revised the technical content.
1/29/2010	5.1	Minor	Clarified the meaning of the technical content.
3/12/2010	6.0	Major	Updated and revised the technical content.
4/23/2010	7.0	Major	Updated and revised the technical content.
6/4/2010	8.0	Major	Updated and revised the technical content.
7/16/2010	8.0	None	No changes to the meaning, language, or formatting of the technical content.

Date	Revision History	Revision Class	Comments
8/27/2010	8.0	None	No changes to the meaning, language, or formatting of the technical content.
10/8/2010	8.0	None	No changes to the meaning, language, or formatting of the technical content.
11/19/2010	8.0	None	No changes to the meaning, language, or formatting of the technical content.
1/7/2011	8.0	None	No changes to the meaning, language, or formatting of the technical content.
2/11/2011	8.0	None	No changes to the meaning, language, or formatting of the technical content.
3/25/2011	8.0	None	No changes to the meaning, language, or formatting of the technical content.
5/6/2011	8.0	None	No changes to the meaning, language, or formatting of the technical content.
6/17/2011	8.1	Minor	Clarified the meaning of the technical content.
9/23/2011	8.1	None	No changes to the meaning, language, or formatting of the technical content.
12/16/2011	9.0	Major	Updated and revised the technical content.
3/30/2012	9.0	None	No changes to the meaning, language, or formatting of the technical content.
7/12/2012	9.0	None	No changes to the meaning, language, or formatting of the technical content.
10/25/2012	9.0	None	No changes to the meaning, language, or formatting of the technical content.
1/31/2013	9.0	None	No changes to the meaning, language, or formatting of the technical content.
8/8/2013	10.0	Major	Updated and revised the technical content.
11/14/2013	10.0	None	No changes to the meaning, language, or formatting of the technical content.
2/13/2014	10.0	None	No changes to the meaning, language, or formatting of the technical content.
5/15/2014	10.0	None	No changes to the meaning, language, or formatting of the technical content.
6/30/2015	11.0	Major	Significantly changed the technical content.
10/16/2015	11.0	None	No changes to the meaning, language, or formatting of the technical content.
7/14/2016	11.0.1	Editorial	Changed language and formatting in the technical content.
6/1/2017	12.0	Major	Significantly changed the technical content.
<u>9/15/2017</u>	<u>13.0</u>	<u>Major</u>	<u>Significantly changed the technical content.</u>

Table of Contents

1	Introduction	9
1.1	Glossary	9
1.2	References	11
1.2.1	Normative References	11
1.2.2	Informative References	12
1.3	Overview	12
1.4	Relationship to Other Protocols	14
1.5	Prerequisites/Preconditions	14
1.6	Applicability Statement	15
1.7	Versioning and Capability Negotiation	15
1.8	Vendor-Extensible Fields	15
1.9	Standards Assignments.....	15
2	Messages.....	17
2.1	Transport	17
2.2	Common Data Types	17
2.2.1	Common Structures	17
2.2.1.1	REDIR_SCARDCONTEXT.....	17
2.2.1.2	REDIR_SCARDHANDLE	17
2.2.1.3	Connect_Common.....	18
2.2.1.4	LocateCards_ATRMask.....	18
2.2.1.5	ReaderState_Common_Call	18
2.2.1.6	ReaderStateA	19
2.2.1.7	ReaderStateW	19
2.2.1.8	SCardIO_Request	19
2.2.1.9	ReadCache_Common.....	20
2.2.1.10	WriteCache_Common	20
2.2.1.11	ReaderState_Return	20
2.2.2	TS Server-Generated Structures	21
2.2.2.1	EstablishContext_Call	21
2.2.2.2	Context_Call.....	21
2.2.2.3	ListReaderGroups_Call.....	22
2.2.2.4	ListReaders_Call	22
2.2.2.5	ContextAndStringA_Call	23
2.2.2.6	ContextAndStringW_Call	23
2.2.2.7	ContextAndTwoStringA_Call	24
2.2.2.8	ContextAndTwoStringW_Call	25
2.2.2.9	LocateCardsA_Call	25
2.2.2.10	LocateCardsW_Call.....	26
2.2.2.11	GetStatusChangeA_Call	26
2.2.2.12	GetStatusChangeW_Call	26
2.2.2.13	ConnectA_Call	27
2.2.2.14	ConnectW_Call	27
2.2.2.15	Reconnect_Call	27
2.2.2.16	HCardAndDisposition_Call	28
2.2.2.17	State_Call	29
2.2.2.18	Status_Call	29
2.2.2.19	Transmit_Call	30
2.2.2.20	Control_Call	30
2.2.2.21	GetAttrib_Call.....	31
2.2.2.22	SetAttrib_Call	32
2.2.2.23	LocateCardsByATRA_Call	32
2.2.2.24	LocateCardsByATRW_Call	33
2.2.2.25	ReadCacheA_Call	33
2.2.2.26	ReadCacheW_Call	33

2.2.2.27	WriteCacheA_Call.....	33
2.2.2.28	WriteCacheW_Call.....	34
2.2.2.29	GetTransmitCount_Call.....	34
2.2.2.30	ScardAccessStartedEvent_Call.....	34
2.2.2.31	GetReaderIcon_Call.....	34
2.2.2.32	GetDeviceTypeId_Call.....	35
2.2.3	TS Client-Generated Structures.....	35
2.2.3.1	ReadCache_Return.....	35
2.2.3.2	EstablishContext_Return.....	35
2.2.3.3	Long_Return.....	36
2.2.3.4	ListReaderGroups_Return and ListReaders_Return.....	36
2.2.3.5	LocateCards_Return and GetStatusChange_Return.....	36
2.2.3.6	Control_Return.....	37
2.2.3.7	Reconnect_Return.....	37
2.2.3.8	Connect_Return.....	37
2.2.3.9	State_Return.....	38
2.2.3.10	Status_Return.....	38
2.2.3.11	Transmit_Return.....	39
2.2.3.12	GetAttrib_Return.....	39
2.2.3.13	GetTransmitCount_Return.....	40
2.2.3.14	GetReaderIcon_Return.....	40
2.2.3.15	GetDeviceTypeId_Return.....	40
2.2.4	Card/Reader State.....	40
2.2.5	Protocol Identifier.....	41
2.2.6	Access Mode Flags.....	42
2.2.7	Reader State.....	42
2.2.8	Return Code.....	44
3	Protocol Details.....	48
3.1	Protocol Server Details.....	48
3.1.1	Abstract Data Model.....	48
3.1.2	Timers.....	48
3.1.3	Initialization.....	48
3.1.4	Message Processing Events and Sequencing Rules.....	48
3.1.4.1	SCARD_IOCTL_ESTABLISHCONTEXT (IOCTL 0x00090014).....	52
3.1.4.2	SCARD_IOCTL_RELEASECONTEXT (IOCTL 0x00090018).....	52
3.1.4.3	SCARD_IOCTL_ISVALIDCONTEXT (IOCTL 0x0009001C).....	52
3.1.4.4	SCARD_IOCTL_ACCESSSTARTEDEVENT (IOCTL 0x000900E0).....	52
3.1.4.5	SCARD_IOCTL_LISTREADERGROUPSA (IOCTL 0x00090020).....	53
3.1.4.6	SCARD_IOCTL_LISTREADERGROUPSW (IOCTL 0x00090024).....	53
3.1.4.7	SCARD_IOCTL_LISTREADERSA (IOCTL 0x00090028).....	53
3.1.4.8	SCARD_IOCTL_LISTREADERSW (IOCTL 0x0009002C).....	53
3.1.4.9	SCARD_IOCTL_INTRODUCEREADERGROUPA (IOCTL 0x00090050).....	53
3.1.4.10	SCARD_IOCTL_INTRODUCEREADERGROUPW (IOCTL 0x00090054).....	54
3.1.4.11	SCARD_IOCTL_FORGETREADERGROUPA (IOCTL 0x00090058).....	54
3.1.4.12	SCARD_IOCTL_FORGETREADERGROUPW (IOCTL 0x0009005C).....	54
3.1.4.13	SCARD_IOCTL_INTRODUCEREADERA (IOCTL 0x00090060).....	54
3.1.4.14	SCARD_IOCTL_INTRODUCEREADERW (IOCTL 0x00090064).....	54
3.1.4.15	SCARD_IOCTL_FORGETREADERA (IOCTL 0x00090068).....	54
3.1.4.16	SCARD_IOCTL_FORGETREADERW (IOCTL 0x0009006C).....	55
3.1.4.17	SCARD_IOCTL_ADDREADERTOGROUPA (IOCTL 0x00090070).....	55
3.1.4.18	SCARD_IOCTL_ADDREADERTOGROUPW (IOCTL 0x00090074).....	55
3.1.4.19	SCARD_IOCTL_REMOVEREADERFROMGROUPA (IOCTL 0x00090078).....	55
3.1.4.20	SCARD_IOCTL_REMOVEREADERFROMGROUPW (IOCTL 0x0009007C).....	55
3.1.4.21	SCARD_IOCTL_LOCATECARDSA (IOCTL 0x00090098).....	55
3.1.4.22	SCARD_IOCTL_LOCATECARDSW (IOCTL 0x0009009C).....	56
3.1.4.23	SCARD_IOCTL_GETSTATUSCHANGEA (IOCTL 0x000900A0).....	56
3.1.4.24	SCARD_IOCTL_GETSTATUSCHANGEW (IOCTL 0x000900A4).....	56

3.1.4.25	SCARD_IOCTL_LOCATECARDSBYATRA (IOCTL 0x000900E8)	56
3.1.4.26	SCARD_IOCTL_LOCATECARDSBYATRW (IOCTL 0x000900EC)	56
3.1.4.27	SCARD_IOCTL_CANCEL (IOCTL 0x000900A8)	57
3.1.4.28	SCARD_IOCTL_CONNECTA (IOCTL 0x000900AC)	57
3.1.4.29	SCARD_IOCTL_CONNECTW (IOCTL 0x000900B0)	57
3.1.4.30	SCARD_IOCTL_DISCONNECT (IOCTL 0x000900B8)	57
3.1.4.31	SCARD_IOCTL_BEGINTRANSACTION (IOCTL 0x000900BC)	57
3.1.4.32	SCARD_IOCTL_ENDTRANSACTION (IOCTL 0x000900C0)	57
3.1.4.33	SCARD_IOCTL_STATUSA (IOCTL 0x000900C8)	58
3.1.4.34	SCARD_IOCTL_STATUSW (IOCTL 0x000900CC)	58
3.1.4.35	SCARD_IOCTL_TRANSMIT (IOCTL 0x000900D0)	58
3.1.4.36	SCARD_IOCTL_RECONNECT (IOCTL 0x000900B4)	58
3.1.4.37	SCARD_IOCTL_CONTROL (IOCTL 0x000900D4)	58
3.1.4.38	SCARD_IOCTL_GETATTRIB (IOCTL 0x000900D8)	58
3.1.4.39	SCARD_IOCTL_SETATTRIB (IOCTL 0x000900DC)	59
3.1.4.40	SCARD_IOCTL_STATE (IOCTL 0x000900C4)	59
3.1.4.41	SCARD_IOCTL_GETTRANSMITCOUNT (IOCTL 0x00090100)	59
3.1.4.42	SCARD_IOCTL_READCACHEA (IOCTL 0x000900F0)	59
3.1.4.43	SCARD_IOCTL_READCACHEW (IOCTL 0x000900F4)	59
3.1.4.44	SCARD_IOCTL_WRITECACHEA (IOCTL 0x000900F8)	60
3.1.4.45	SCARD_IOCTL_WRITECACHEW (IOCTL 0x000900FC)	60
3.1.4.46	SCARD_IOCTL_RELEASETARTEDEVENT	60
3.1.4.47	SCARD_IOCTL_GETREADERICON (IOCTL 0x00090104)	60
3.1.4.48	SCARD_IOCTL_GETDEVICETYPEID (IOCTL 0x00090108)	60
3.1.5	Timer Events	60
3.1.6	Other Local Events	60
3.2	Protocol Client Details	61
3.2.1	Abstract Data Model	61
3.2.2	Timers	61
3.2.3	Initialization	61
3.2.4	Higher-Layer Triggered Events	61
3.2.5	Message Processing Events and Sequencing Rules	61
3.2.5.1	Sending Outgoing Messages	61
3.2.5.2	Processing Incoming Replies	61
3.2.5.3	Messages	62
3.2.5.3.1	Sending EstablishContext Message	62
3.2.5.3.2	Processing EstablishContext Reply	62
3.2.5.3.3	Sending ReleaseContext Message	62
3.2.5.3.4	Processing ReleaseContext Reply	62
3.2.5.3.5	Sending IntroduceReader (ASCII) Message	62
3.2.5.3.6	Processing IntroduceReader (ASCII) Reply	62
3.2.5.3.7	Sending IntroduceReader (Unicode) Message	62
3.2.5.3.8	Processing IntroduceReader (Unicode) Reply	62
3.2.5.3.9	Sending ForgetReader (ASCII) Message	62
3.2.5.3.10	Processing ForgetReader (ASCII) Reply	62
3.2.5.3.11	Sending ForgetReader (Unicode) Message	63
3.2.5.3.12	Processing ForgetReader (Unicode) Reply	63
3.2.5.3.13	Sending IntroduceReaderGroup (ASCII) Message	63
3.2.5.3.14	Processing IntroduceReaderGroup (ASCII) Reply	63
3.2.5.3.15	Sending IntroduceReaderGroup (Unicode) Message	63
3.2.5.3.16	Processing IntroduceReaderGroup (Unicode) Reply	63
3.2.5.3.17	Sending ForgetReaderGroup (ASCII) Message 1	63
3.2.5.3.18	Processing ForgetReaderGroup (ASCII) Reply	63
3.2.5.3.19	Sending ForgetReaderGroup (ASCII) Message 2	63
3.2.5.3.20	Processing ForgetReaderGroup (Unicode) Reply	63
3.2.5.3.21	Sending AddReaderToGroup (ASCII) Message	63
3.2.5.3.22	Processing AddReaderToGroup (ASCII) Reply	64
3.2.5.3.23	Sending AddReaderToGroup (Unicode) Message	64

3.2.5.3.24	Processing AddReaderToGroup (Unicode) Reply.....	64
3.2.5.3.25	Sending RemoveReaderFromGroup (ASCII) Message	64
3.2.5.3.26	Processing RemoveReaderFromGroup (ASCII) Reply	64
3.2.5.3.27	Sending RemoveReaderFromGroup (Unicode) Message	64
3.2.5.3.28	Processing RemoveReaderFromGroup (Unicode) Reply	64
3.2.5.3.29	Sending ListReaderGroups (ASCII) Message	64
3.2.5.3.30	Processing ListReaderGroups (ASCII) Reply	64
3.2.5.3.31	Sending ListReaderGroups (Unicode) Message	64
3.2.5.3.32	Processing ListReaderGroups (Unicode) Reply	64
3.2.5.3.33	Sending ListReaders (ASCII) Message	65
3.2.5.3.34	Processing ListReadersReply (ASCII) Reply	65
3.2.5.3.35	Sending ListReaders (Unicode) Message	65
3.2.5.3.36	Processing ListReadersReply (Unicode) Reply	65
3.2.5.3.37	Sending LocateCards (ASCII) Message	65
3.2.5.3.38	Processing LocateCards (ASCII) Reply.....	65
3.2.5.3.39	Sending LocateCards (Unicode) Message	65
3.2.5.3.40	Processing LocateCards (Unicode) Reply.....	65
3.2.5.3.41	Sending GetStatusChange (ASCII) Message.....	65
3.2.5.3.42	Processing GetStatusChange (ASCII) Reply	65
3.2.5.3.43	Sending GetStatusChange (Unicode) Message.....	65
3.2.5.3.44	Processing GetStatusChange (Unicode) Reply	66
3.2.5.3.45	Sending Cancel Message	66
3.2.5.3.46	Processing Cancel Reply	66
3.2.5.3.47	Sending Connect (ASCII) Message.....	66
3.2.5.3.48	Processing Connect (ASCII) Reply	66
3.2.5.3.49	Sending Connect (Unicode) Message.....	66
3.2.5.3.50	Processing Connect (Unicode) Reply	66
3.2.5.3.51	Sending Reconnect Message	66
3.2.5.3.52	Processing Reconnect Reply	66
3.2.5.3.53	Sending Disconnect Message	66
3.2.5.3.54	Processing Disconnect Reply	66
3.2.5.3.55	Sending Status (ASCII) Message	67
3.2.5.3.56	Processing Status (ASCII) Reply	67
3.2.5.3.57	Sending Status (Unicode) Message	67
3.2.5.3.58	Processing Status (Unicode) Reply.....	67
3.2.5.3.59	Sending State Message	67
3.2.5.3.60	Processing State Message Reply	67
3.2.5.3.61	Sending BeginTransaction Message.....	67
3.2.5.3.62	Processing BeginTransaction Reply	67
3.2.5.3.63	Sending EndTransaction Message	67
3.2.5.3.64	Processing EndTransaction Reply	67
3.2.5.3.65	Sending Transmit Message	67
3.2.5.3.66	Processing Transmit Reply	68
3.2.5.3.67	Sending Control Message	68
3.2.5.3.68	Processing Control Reply	68
3.2.5.3.69	Sending GetReaderCapabilities Message	68
3.2.5.3.70	Processing GetReaderCapabilities Reply.....	68
3.2.5.3.71	Sending SetReaderCapabilities Message	68
3.2.5.3.72	Processing SetReaderCapabilities Reply.....	68
3.2.5.3.73	Sending WaitForResourceManager Message	68
3.2.5.3.74	Processing WaitForResourceManager Reply.....	68
3.2.5.3.75	Sending LocateCardsByATR (ASCII) Message.....	68
3.2.5.3.76	Processing LocateCardsByATR (Unicode) Reply.....	68
3.2.5.3.77	Processing LocateCardsByATR (ASCII) Reply.....	68
3.2.5.3.78	Sending LocateCardsByATR (Unicode) Message.....	69
3.2.5.3.79	Sending ReadCache (ASCII) Message.....	69
3.2.5.3.80	Processing ReadCache (ASCII) Reply	69
3.2.5.3.81	Sending ReadCache (Unicode) Message.....	69

3.2.5.3.82	Processing ReadCache (Unicode) Reply	69
3.2.5.3.83	Sending WriteCache (ASCII) Message	69
3.2.5.3.84	Processing WriteCache (ASCII) Reply	69
3.2.5.3.85	Sending WriteCache (Unicode) Message	69
3.2.5.3.86	Processing WriteCache (Unicode) Reply	69
3.2.5.3.87	Sending GetTransmitCount Message	69
3.2.5.3.88	Processing GetTransmitCount Reply	69
3.2.5.3.89	Sending GetReaderIcon Message	70
3.2.5.3.90	Processing GetReaderIcon Reply	70
3.2.5.3.91	Sending GetDeviceTypeId Message	70
3.2.5.3.92	Processing GetDeviceTypeId Reply	70
3.2.6	Timer Events	70
3.2.7	Other Local Events	70
4	Protocol Examples	71
4.1	Establish Context Call	72
4.2	Establish Context Return	72
4.3	List Readers Call	72
4.4	List Readers Return	72
4.5	Get Status Change Call	72
4.6	Get Status Change Return	73
4.7	Connect Call	73
4.8	Connect Return	73
4.9	Begin Transaction Call	73
4.10	Begin Transaction Return	74
4.11	Status Call	74
4.12	Status Return	74
4.13	End Transaction Call	74
4.14	End Transaction Return	74
4.15	Disconnect Call	74
4.16	Disconnect Return	75
4.17	Release Context Call	75
4.18	Release Context Return	75
5	Security	76
5.1	Security Considerations for Implementers	76
5.2	Index of Security Parameters	76
6	Appendix A: Full IDL	77
7	Appendix B: Product Behavior	83
8	Change Tracking	84
9	Index	85

1 Introduction

This document specifies an extension (including virtual channels) to the Remote Desktop Protocol: File System Virtual Channel Extension for supporting smart card reader-like devices.

Sections 1.5, 1.8, 1.9, 2, and 3 of this specification are normative. All other sections and examples in this specification are informative.

1.1 Glossary

This document uses the following terms:

Answer To Reset (ATR): The transmission sent by an ISO-7816-compliant Integrated Circuit Card (as specified in [ISO/IEC-7816-3] section 8) to a smart card reader in response to an ISO-7816-3-based RESET condition.

ASCII: The American Standard Code for Information Interchange (ASCII) is an 8-bit character-encoding scheme based on the English alphabet. ASCII codes represent text in computers, communications equipment, and other devices that work with text. ASCII refers to a single 8-bit ASCII character or an array of 8-bit ASCII characters with the high bit of each character set to zero.

build number: A part of a sequential numbering system that is used to differentiate one version of a software product from another.

call packet: A combination of I/O control (IOCTL) and a data structure request from a protocol client that corresponds to that IOCTL.

card type: A string that specifies a specific type of smart card that is recognized by Smart Cards for Windows.

device: Any peripheral or part of a computer system that can send or receive data.

device I/O: Device input/output.

device name: The friendly, human-readable name of a device.

HRESULT: An integer value that indicates the result or status of an operation. A particular HRESULT can have different meanings depending on the protocol using it. See [MS-ERREF] section 2.1 and specific protocol documents for further details.

I/O control (IOCTL): A command that is issued to a target file system or target device in order to query or alter the behavior of the target; or to query or alter the data and attributes that are associated with the target or the objects that are exposed by the target.

Interface Definition Language (IDL): The International Standards Organization (ISO) standard language for specifying the interface for remote procedure calls. For more information, see [C706] section 4.

Microsoft Terminal Services (TS): A component that allows a user to access applications or data stored on a remote computer over a network connection.

Multistring: A series of null-terminated character strings terminated by a final null character stored in a contiguous block of memory.

operating system version: A uniquely identifiable numbered string that is used to identify a particular operating system.

protocol client: An endpoint that initiates a protocol.

protocol server: An endpoint that processes the call packet from a protocol client.

reader group name: The friendly, human-readable name for a reader group.

Remote Desktop Protocol (RDP): A multi-channel protocol that allows a user to connect to a computer running Microsoft Terminal Services (TS). RDP enables the exchange of client and server settings and also enables negotiation of common settings to use for the duration of the connection, so that input, graphics, and other data can be exchanged and processed between client and server.

remote procedure call (RPC): A context-dependent term commonly overloaded with three meanings. Note that much of the industry literature concerning RPC technologies uses this term interchangeably for any of the three meanings. Following are the three definitions: (*) The runtime environment providing remote procedure call facilities. The preferred usage for this meaning is "RPC runtime". (*) The pattern of request and response message exchange between two parties (typically, a client and a server). The preferred usage for this meaning is "RPC exchange". (*) A single message from an exchange as defined in the previous definition. The preferred usage for this term is "RPC message". For more information about RPC, see [C706].

return packet: An encoded structure containing the result of a call packet operation executed on the protocol client.

smart card: A portable device that is shaped like a business card and is embedded with a memory chip and either a microprocessor or some non-programmable logic. Smart cards are often used as authentication tokens and for secure key storage. Smart cards used for secure key storage have the ability to perform cryptographic operations with the stored key without allowing the key itself to be read or otherwise extracted from the card.

smart card reader: A device used as a communication medium between the smart card and a Host; for example, a computer. Also referred to as a Reader.

smart card reader name: The friendly, human-readable name of the smart card reader. Also referred to as a Reader Name.

Smart Cards for Windows: An implementation of the ICC Resource Manager according to [PCSC5].

static virtual channel: A static transport used for lossless communication between a client component and a server component over a main data connection, as specified in [MS-RDPBCGR].

TS client: A Microsoft Terminal Services program that initiates a connection.

TS server: A Microsoft Terminal Services program that responds to a request from a TS client.

Unicode: A character encoding standard developed by the Unicode Consortium that represents almost all of the written languages of the world. The Unicode standard [UNICODE5.0.0/2007] provides three forms (UTF-8, UTF-16, and UTF-32) and seven schemes (UTF-8, UTF-16, UTF-16 BE, UTF-16 LE, UTF-32, UTF-32 LE, and UTF-32 BE).

Unicode string: A Unicode 8-bit string is an ordered sequence of 8-bit units, a Unicode 16-bit string is an ordered sequence of 16-bit code units, and a Unicode 32-bit string is an ordered sequence of 32-bit code units. In some cases, it could be acceptable not to terminate with a terminating null character. Unless otherwise specified, all Unicode strings follow the UTF-16LE encoding scheme with no Byte Order Mark (BOM).

universally unique identifier (UUID): A 128-bit value. UUIDs can be used for multiple purposes, from tagging objects with an extremely short lifetime, to reliably identifying very persistent objects in cross-process communication such as client and server interfaces, manager entry-point vectors, and RPC objects. UUIDs are highly likely to be unique. UUIDs are also

known as globally unique identifiers (GUIDs) and these terms are used interchangeably in the Microsoft protocol technical documents (TDs). Interchanging the usage of these terms does not imply or require a specific algorithm or mechanism to generate the UUID. Specifically, the use of this term does not imply or require that the algorithms described in [RFC4122] or [C706] must be used for generating the UUID.

virtual channel: A communication channel available in a TS server session between applications running at the server and applications running on the TS client.

MAY, SHOULD, MUST, SHOULD NOT, MUST NOT: These terms (in all caps) are used as defined in [RFC2119]. All statements of optional behavior use either MAY, SHOULD, or SHOULD NOT.

1.2 References

Links to a document in the Microsoft Open Specifications library point to the correct section in the most recently published version of the referenced document. However, because individual documents in the library are not updated at the same time, the section numbers in the documents may not match. You can confirm the correct section numbering by checking the Errata.

1.2.1 Normative References

We conduct frequent surveys of the normative references to assure their continued availability. If you have any issue with finding a normative reference, please contact dohelp@microsoft.com. We will assist you in finding the relevant information.

[C706] The Open Group, "DCE 1.1: Remote Procedure Call", C706, August 1997,
<https://www2.opengroup.org/ogsys/catalog/c706>

[ISO/IEC-7816-3] International Organization for Standardization, "Identification Cards -- Integrated Circuit Cards -- Part 3: Cards with Contacts -- Electrical Interface and Transmission Protocols", ISO/IEC 7816-3, October 2006,
http://www.iso.org/iso/home/store/catalogue_tc/catalogue_detail.htm?csnumber=38770

Note There is a charge to download the specification.

[ISO/IEC-7816-4] International Organization for Standardization, "Identification Cards -- Integrated Circuit Cards -- Part 4: Organization, Security, and Commands for Interchange", ISO/IEC 7816-4, January 2005,
http://www.iso.org/iso/home/store/catalogue_tc/catalogue_detail.htm?csnumber=36134

Note There is a charge to download the specification.

[MS-DCOM] Microsoft Corporation, "Distributed Component Object Model (DCOM) Remote Protocol".

[MS-DTYP] Microsoft Corporation, "Windows Data Types".

[MS-ERREF] Microsoft Corporation, "Windows Error Codes".

[MS-RDPBCGR] Microsoft Corporation, "Remote Desktop Protocol: Basic Connectivity and Graphics Remoting".

[MS-RDPEFS] Microsoft Corporation, "Remote Desktop Protocol: File System Virtual Channel Extension".

[MS-RPCE] Microsoft Corporation, "Remote Procedure Call Protocol Extensions".

[PCSC3] PC/SC Workgroup, "Interoperability Specification for ICCs and Personal Computer Systems - Part 3: Requirements for PC-Connected Interface Devices", December 1997,
<http://www.pcscworkgroup.com/specifications/V1/p3v10doc>

[PCSC5] PC/SC Workgroup, "Interoperability Specification for ICCs and Personal Computer Systems - Part 5: ICC Resource Manager Definition", December 1997, <http://www.pcscworkgroup.com/specifications/V1/p5v10doc>

[RFC2119] Bradner, S., "Key words for use in RFCs to Indicate Requirement Levels", BCP 14, RFC 2119, March 1997, <http://www.rfc-editor.org/rfc/rfc2119.txt>

1.2.2 Informative References

None.

1.3 Overview

The following figure illustrates a baseline for terminology related to clients and servers.

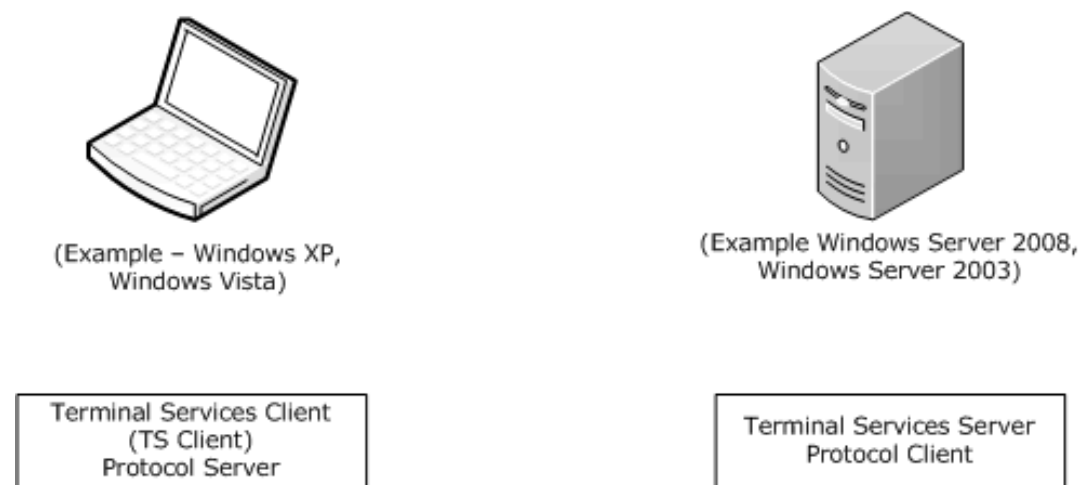


Figure 1: TS and protocol client-server definition

Remote Desktop Protocol (RDP) Device Redirection enables client devices (for example, printers, smart card readers, drives, audio, serial ports, and parallel ports) to be available to server-side applications, within the context of a single RDP session. This protocol is specified in [MS-RDPEFS].

Smart Card Redirection is an asynchronous client/server protocol, an extension (specified in [MS-RDPEFS]) that is designed to remotely execute requests on a client's Smart Cards for Windows. These requests would have otherwise been executed on the server. Each request is composed of two packets: a call packet and return packet. The protocol client (Microsoft Terminal Services (TS) server) sends a call packet after an initial announcement by the protocol server (TS client), and will receive a return packet after the request has been completed or an error has occurred. Remote Desktop Protocol (RDP) Device Redirection uses a static virtual channel as its transport.

Smart Card Redirection redirects the TS client-side Smart Cards for Windows. When Smart Card Redirection is in effect, TS server application smart card subsystem calls (for example, EstablishContext) are automatically remapped to the TS client-side Smart Cards for Windows, which will then receive the corresponding request. Smart Card Redirection devices are only required to understand one type of device I/O request.

The following figure shows a high-level sequence diagram of the protocol for redirected calls. Device Announce and Device Disconnect are handled via the lower-layer protocols.

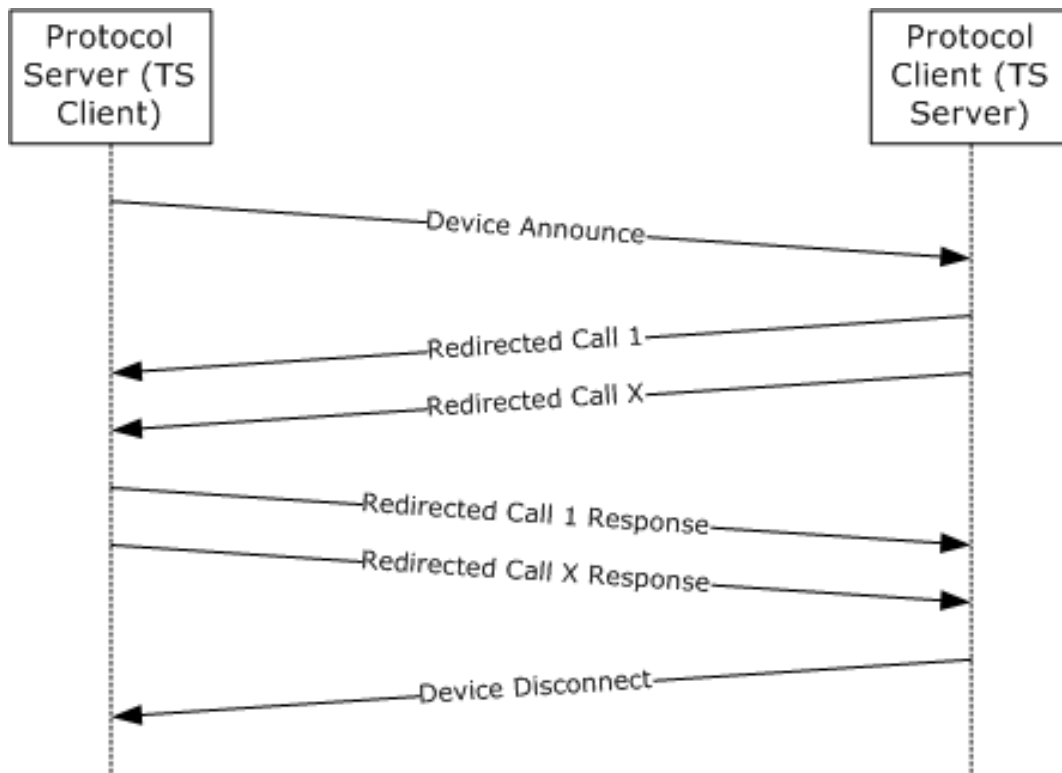


Figure 2: High-level protocol sequence

The following figure specifies how the messages are encoded and routed from a TS client to a TS server. The following numbered list details corresponding actions related to the pictured protocol flow.

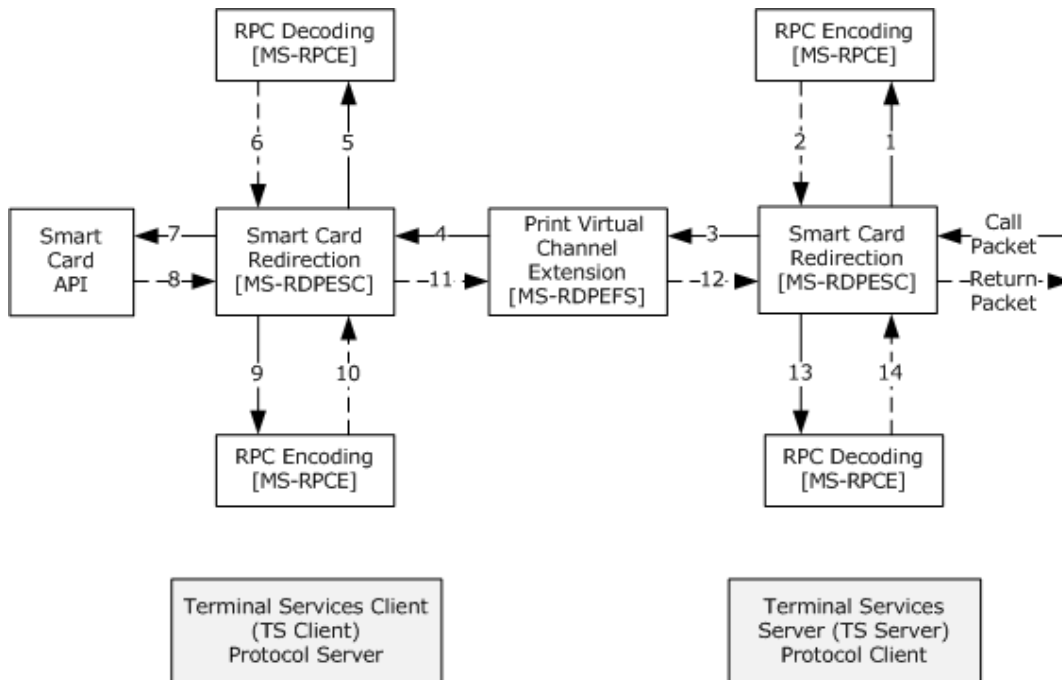


Figure 3: Protocol flow

The input for this protocol (call packet) is a combination of an I/O control (IOCTL) and the corresponding structure as specified in section 3.2.5.

1. The call packet structure is encoded as specified in [MS-RPCE] section 2.2.6.
2. The packet, as specified in [MS-RPCE], is returned as a response to 1.
3. The encoded value from 2 is combined with the IOCTL and transported over RDP Device Redirection, as specified in [MS-RDPEFS] section 2.
4. On the TS client, Remote Desktop Protocol: File System Virtual Channel Extension will route the packet from 3 to protocol server for the Smart Card Redirection, as specified in [MS-RDPEFS] section 2.
5. After Smart Card Redirection receives the message, the encoded structure is decoded, as specified in [MS-RPCE] section 2.2.6.
6. The packet, decoded as specified in [MS-RPCE], is a response to 5.
7. Based on the IOCTL, the structure members are used as input parameters to the Smart Cards for Windows, as specified in [PCSC5] section 3.
8. The output parameters including the return code are packaged into the return packet structure for this IOCTL.
9. The return packet structure is encoded as specified in [MS-RPCE] section 2.2.6.
10. Return data, encoded as specified in [MS-RPCE], is a response to 9.
11. The encoded value from 10 is sent to RDP Device Redirection (as specified in [MS-RDPEFS]) as a reply to the call packet from 4.
12. RDP Device Redirection (as specified in [MS-RDPEFS]) routes the reply back to the protocol client.
13. On receipt of packet from 12, the encoded structure is decoded as specified by to [MS-RPCE] section 2.2.6.
14. In response to 13, return data is decoded as specified by [MS-RPCE].

The output from the Smart Card Redirection is the return packet. This data will then be processed by higher layers.

1.4 Relationship to Other Protocols

This protocol extension expands Remote Desktop Protocol: File System Virtual Channel Extension [MS-RDPEFS] functionality to provide support for Smart Cards for Windows.

This protocol relies on the Distributed Component Object Model (DCOM) Remote Protocol [MS-DCOM], which uses remote procedure call (RPC) as its transport.

This protocol uses the Remote Procedure Call Protocol Extensions ([MS-RPCE] section 2) to encode packet structures carried within an RDP session.

1.5 Prerequisites/Preconditions

RDP Device Redirection transport (as specified in [MS-RDPEFS] section 2.2.2.7.5) must be configured to redirect smart card devices.

1.6 Applicability Statement

This specification applies to redirecting Smart Cards for Windows API-based calls for a Terminal Services client, as specified in [PCSC5] section 3.

1.7 Versioning and Capability Negotiation

This document covers versioning issues in the following areas:

- Protocol Versions: Smart Card Redirection supports the dialects SCREDIR_VERSION_XP (1), SCREDIR_VERSION_LONGHORN (2), and SCREDIR_VERSION_WINDOWS_8 (3).
- Capability Negotiation: The Smart Card Redirection protocol does not support negotiation of the dialect to use. Instead, an implementation is configured with the dialect to use.

The TS server determines the dialect to use by analyzing the client build number on device announce as specified in [MS-RDPBCGR] section 2.2.1.3.2 using the following mapping. <1>

Build Number	Dialect
>= 7865	SCREDIR_VERSION_WINDOWS_8 (3)
>= 4034 and < 7865	SCREDIR_VERSION_LONGHORN (2)
< 4034	SCREDIR_VERSION_XP (1)

1.8 Vendor-Extensible Fields

This protocol uses HRESULTs as defined in [MS-ERREF] section 2.1. Vendors can define their own HRESULT values, provided that they set the C bit (0x20000000) for each vendor-defined value, indicating that the value is a customer code.

This protocol uses Win32 error codes. These values are taken from the Windows error number space, as specified in [MS-ERREF] section 2.2. Vendors SHOULD reuse those values with their indicated meaning. Choosing any other value runs the risk of a collision in the future.

This protocol uses NTSTATUS values as specified in [MS-ERREF] section 2.3. Vendors are free to choose their own values for this field, provided that they set the C bit (0x20000000) for each vendor-defined value, indicating it is a that customer code.

IOCTL fields used in this specification are extensible. Vendors MUST implement the corresponding functions.

1.9 Standards Assignments

This protocol uses the following RPC UUID for the type_scard_pack interface.

Parameter	Value	Reference
Remote procedure call (RPC) interface universally unique identifier (UUID)	A35AF600-9CF4-11CD-A076-08002B2BD711	[C706] Appendix A 2.5

2 Messages

The following sections specify how Remote Desktop Protocol: Smart Card Virtual Channel Extension messages are transported, and common data types.

2.1 Transport

All messages MUST be transported over established RDP Device Extensions (as specified in [MS-RDPEFS] section 2.1). This protocol uses the device enumerate and announcement messages, as specified in [MS-RDPEFS] section 3.

Remote Desktop Protocol: File System Virtual Channel Extension is responsible for providing a unique Device ID as defined in [MS-RDPEFS] section 3.1.1.

2.2 Common Data Types

All structures in this section MUST be encoded as specified in [MS-RPCE] section 2. Unless otherwise stated, the structure MUST be initialized to zero before use.

2.2.1 Common Structures

The structures defined in the following sections are common among both TS server-generated structures (for more information, see section 2.2.2) and TS client-generated structures (for more information, see section 2.2.3).

2.2.1.1 REDIR_SCARDCONTEXT

REDIR_SCARDCONTEXT represents a context to Smart Cards for Windows on the TS client.

```
typedef struct _REDIR_SCARDCONTEXT {
    [range(0,16)] unsigned long cbContext;
    [unique] [size_is(cbContext)] byte *pbContext;
} REDIR_SCARDCONTEXT;
```

cbContext: The number of bytes in the **pbContext** field.

pbContext: An array of **cbContext** bytes that contains Smart Cards for Windows context. The data is implementation-specific and MUST NOT be interpreted or changed on the Protocol server.

2.2.1.2 REDIR_SCARDHANDLE

REDIR_SCARDHANDLE represents a smart card reader handle associated with Smart Cards for Windows context.

```
typedef struct _REDIR_SCARDHANDLE {
    REDIR_SCARDCONTEXT Context;
    [range(0,16)] unsigned long cbHandle;
    [size_is(cbHandle)] byte *pbHandle;
} REDIR_SCARDHANDLE;
```

Context: A valid context, as specified in REDIR_SCARDCONTEXT.

cbHandle: The number of bytes in the **pbHandle** field.

pbHandle: An array of **cbHandle** bytes that corresponds to a smart card reader handle on the TS client. The data is implementation-specific and MUST NOT be interpreted or changed on the Protocol server.

2.2.1.3 Connect_Common

The Connect_Common structure contains information common to both versions of the Connect function (for more information, see sections 2.2.2.13 and 2.2.2.14).

```
typedef struct _Connect_Common {
    REDIR_SCARDCONTEXT Context;
    unsigned long dwShareMode;
    unsigned long dwPreferredProtocols;
} Connect_Common;
```

Context: A valid context, as specified in section 2.2.1.1.

dwShareMode: A flag that indicates whether other applications are allowed to form connections to the card. Possible values of this field are specified in section 2.2.6.

dwPreferredProtocols: A bitmask of acceptable protocols for the connection, as specified in section 2.2.5.

2.2.1.4 LocateCards_ATRMask

The LocateCards_ATRMask structure contains the information to identify a card type.

```
typedef struct _LocateCards_ATRMask {
    [range(0,36)] unsigned long cbAtr;
    byte rgbAtr[36];
    byte rgbMask[36];
} LocateCards_ATRMask;
```

cbAtr: The number of bytes used in the **rgbAtr** and **rgbMask** fields.

rgbAtr: Values for the card's Answer To Reset (ATR) string. This value MUST be formatted as specified in [ISO/IEC-7816-3] section 8. Unused bytes MUST be set to 0 and MUST be ignored.

rgbMask: Values for the mask for the card's ATR string. Each bit that cannot vary between cards of the same type MUST be set to 1. Unused bytes MUST be set to 0 and MUST be ignored.

2.2.1.5 ReaderState_Common_Call

The ReaderState_Common_Call structure contains the state of the reader at the time of the call as seen by the caller.

```
typedef struct _ReaderState_Common_Call {
    unsigned long dwCurrentState;
    unsigned long dwEventState;
    [range(0,36)] unsigned long cbAtr;
    byte rgbAtr[36];
} ReaderState_Common_Call;
```

dwCurrentState: A bitmap that specifies the current reader state according to the TS client. Possible values are specified in section 2.2.7.

dwEventState: A bitmap that defines the state of the reader after a state change. Possible values are specified in section 2.2.7.

cbAtr: The number of bytes used in the ATR string.

rgbAtr: The value for the card's ATR string. If **cbAtr** is NOT zero, this value MUST be formatted in accordance to [ISO/IEC-7816-3] section 8. Unused bytes MUST be set to 0 and MUST be ignored.

2.2.1.6 ReaderStateA

The ReaderStateA structure contains information used in calls that only require Smart Cards for Windows context and an ASCII string.

```
typedef struct _ReaderStateA {
    [string] const char* szReader;
    ReaderState_Common_Call Common;
} ReaderStateA;
```

szReader: An ASCII string specifying the reader name.

Common: A packet that specifies the state of the reader at the time of the call. For information about this packet, see section 2.2.1.5.

2.2.1.7 ReaderStateW

The ReaderStateW structure is a Unicode representation of the state of a smart card reader.

```
typedef struct _ReaderStateW {
    [string] const wchar_t* szReader;
    ReaderState_Common_Call Common;
} ReaderStateW;
```

szReader: A Unicode string specifying the reader name.

Common: A packet that specifies the state of the reader at the time of the call. For information about this packet, see section 2.2.1.5.

2.2.1.8 SCardIO_Request

The SCardIO_Request structure represents the data to be prepended to a Transmit command (for more information, see section 3.1.4.35).

```
typedef struct _SCardIO_Request {
    unsigned long dwProtocol;
    [range(0,1024)] unsigned long cbExtraBytes;
    [unique] [size_is(cbExtraBytes)] byte *pbExtraBytes;
} SCardIO_Request;
```

dwProtocol: The protocol in use. Possible values are specified in section 2.2.5.

cbExtraBytes: The number of bytes in the **pbExtraBytes** field.

pbExtraBytes: Request data.

2.2.1.9 ReadCache_Common

The ReadCache_Common structure contains information common to both the ReadCacheA_Call and ReadCacheW_Call structures.

```
typedef struct _ReadCache_Common {
    REDIR_SCARDCONTEXT Context;
    UUID* CardIdentifier;
    unsigned long FreshnessCounter;
    long fPbDataIsNull;
    unsigned long cbDataLen;
} ReadCache_Common;
```

Context: A valid context, as specified in section 2.2.1.1.

CardIdentifier: A UUID that specifies the name of the smart card with which the name-value pair is associated.

FreshnessCounter: A value specifying the current revision of the data.

fPbDataIsNull: A Boolean value specifying whether the caller wants to retrieve the length of the data. It MUST be set to TRUE (0x00000001) if the caller wants only to retrieve the length of the data; otherwise, it MUST be set to FALSE (0x00000000).

cbDataLen: The length of the buffer specified on the server side. If **cbDataLen** is set to SCARD_AUTOALLOCATE with a value of 0xFFFFFFFF, a buffer of any length can be returned. Otherwise, the returned buffer MUST NOT exceed **cbDataLen** bytes. This field MUST be ignored if **fPbDataIsNull** is set to TRUE (0x00000001).

2.2.1.10 WriteCache_Common

The WriteCache_Common structure contains information common between the WriteCacheA_Call and WriteCacheW_Call structures.

```
typedef struct _WriteCache_Common {
    REDIR_SCARDCONTEXT Context;
    UUID *CardIdentifier;
    unsigned long FreshnessCounter;
    [range(0,65536)] unsigned long cbDataLen;
    [unique] [size_is(cbDataLen)] byte *pbData;
} WriteCache_Common;
```

Context: A valid context, as specified in section 2.2.1.1.

CardIdentifier: A UUID that identifies the smart card with which the data SHOULD be stored. CardIdentifier MUST be a unique value per the smart card.

FreshnessCounter: A value specifying the current revision of the data.

cbDataLen: The number of bytes in the **pbData** field.

pbData: **cbDataLen** bytes of data to be stored.

2.2.1.11 ReaderState_Return

The ReaderState_Return structure specifies state information returned from Smart Cards for Windows.

```
typedef struct _ReaderState_Return {
```

```

    unsigned long dwCurrentState;
    unsigned long dwEventState;
    [range(0,36)] unsigned long cbAtr;
    byte rgbAtr[36];
} ReaderState_Return;

```

dwCurrentState: A bitmap that defines the current state of the reader at the time of the call. Possible values are specified in section 2.2.7.

dwEventState: A bitmap that defines the state of the reader after a state change as seen by Smart Cards for Windows. Possible values are specified in section 2.2.7.

cbAtr: The number of used bytes in **rgbAtr**.

rgbAtr: The values for the card's ATR string. Unused bytes MUST be set to zero and MUST be ignored on receipt.

2.2.2 TS Server-Generated Structures

All structures in this section are sent from the TS server to the TS client.

2.2.2.1 EstablishContext_Call

The EstablishContext_Call structure is used to specify the scope of Smart Cards for Windows context to be created (for more information, see section 3.1.4.1).

```

typedef struct _EstablishContext_Call {
    unsigned long dwScope;
} EstablishContext_Call;

```

dwScope: The scope of the context that will be established. The following table shows valid values of this field.

Value	Meaning
SCARD_SCOPE_USER 0x00000000	The context is a user context; any database operations MUST be performed with the domain of the user.
SCARD_SCOPE_TERMINAL 0x00000001	The context is a terminal context; any database operations MUST be performed with the domain of the terminal. This flag is currently unused; it is here for compatibility with [PCSC5] section 3.1.3.
SCARD_SCOPE_SYSTEM 0x00000002	The context is the system context; any database operations MUST be performed within the domain of the system.

2.2.2.2 Context_Call

The Context_Call structure contains Smart Cards for Windows context.

```

typedef struct _Context_Call {
    REDIR_SCARDCONTEXT Context;
} Context_Call;

```

Context: A valid context, as specified in section 2.2.1.1.

2.2.2.3 ListReaderGroups_Call

The ListReaderGroups_Call structure contains the parameters for the List Readers Groups call (for more information, see sections 3.1.4.5 and 3.1.4.6).

```
typedef struct _ListReaderGroups_Call {  
    REDIR_SCARDCONTEXT Context;  
    long fmszGroupsIsNULL;  
    unsigned long cchGroups;  
} ListReaderGroups_Call;
```

Context: A valid context, as specified in section 2.2.1.1.

fmszGroupsIsNULL: A Boolean value specifying whether the caller wants to retrieve just the length of the data. Set to FALSE (0x00000000) in order to allow the data to be returned. Set to TRUE (0x00000001) and only the length of the data will be returned.

cchGroups: The length of the string buffer specified by the caller. If **cchGroups** is set to SCARD_AUTOALLOCATE with a value of 0xFFFFFFFF, a string of any length can be returned. Otherwise, the returned string MUST NOT exceed **cchGroups** characters in length, including any null characters. When the string to be returned exceeds **cchGroups** characters in length, including any null characters, ListReaderGroups_Return.ReturnCode MUST be set to SCARD_E_INSUFFICIENT_BUFFER (0x80100008). The **cchGroups** field MUST be ignored if **fmszGroupsIsNULL** is set to TRUE (0x00000001). Also, if **fmszGroupsIsNULL** is set to FALSE (0x00000000) but **cchGroups** is set to 0x00000000, then the call MUST succeed, ListReaderGroups_Return.cBytes MUST be set to the length of the data, in bytes, and ListReaderGroups_Return.msZ MUST be set to NULL.

2.2.2.4 ListReaders_Call

The ListReaders_Call structure contains the parameters for the List Readers call (for more information, see sections 3.1.4.7 and 3.1.4.8).

```
typedef struct _ListReaders_Call {  
    REDIR_SCARDCONTEXT Context;  
    [range(0, 65536)] unsigned long cBytes;  
    [unique] [size_is(cBytes)] const byte *mszGroups;  
    long fmszReadersIsNULL;  
    unsigned long cchReaders;  
} ListReaders_Call;
```

Context: A valid context, as specified in section 2.2.1.1.

cBytes: The length, in bytes, of reader groups specified in **mszGroups**.

mszGroups: The names of the reader groups defined in the system. Reader groups not present on the protocol server MUST be ignored. The value of this is dependent on the context (IOCTL) that it is used.

Value	Meaning
SCARD_IOCTL_LISTREADERSA 0x00090028	ASCII multistring
SCARD_IOCTL_LISTREADERSW 0x0009002C	Unicode multistring

fmszReadersIsNull: A Boolean value specifying whether the caller wants to retrieve the length of the data. Set to FALSE (0x00000000) to allow the data to be returned. Set to TRUE (0x00000001), and only the length of the data will be returned.

cchReaders: The length of the string buffer specified by the caller. If **cchReaders** is set to SCARD_AUTOALLOCATE with a value of 0xFFFFFFFF, a string of any length can be returned. Otherwise, the returned string MUST NOT exceed **cchReaders** characters in length, including any NULL characters. When the string to be returned exceeds **cchReaders** characters in length, including any null characters, ListReaders_Return.**ReturnCode** MUST be set to SCARD_E_INSUFFICIENT_BUFFER (0x80100008). The **cchReaders** field MUST be ignored if **fmszReadersIsNull** is set to TRUE (0x00000001). Also, if **fmszReadersIsNull** is set to FALSE (0x00000000) but **cchReaders** is set to 0x00000000, then the call MUST succeed, ListReaders_Return.**cBytes** MUST be set to the length of the data in bytes, and ListReaders_Return.**msz** MUST be set to NULL.

2.2.2.5 ContextAndStringA_Call

The ContextAndStringA_Call structure contains information used in calls that only require a Smart Cards for Windows context and an ASCII string.

```
typedef struct _ContextAndStringA_Call {  
    REDIR_SCARDCONTEXT Context;  
    [string] const char* sz;  
} ContextAndStringA_Call;
```

Context: A valid context, as specified in section 2.2.1.1.

sz: The value of this string depends on the context (based on IOCTL) in which this structure is used.

Value	Meaning
SCARD_IOCTL_INTRODUCEREADERGROUPA 0x00090050	Reader group name
SCARD_IOCTL_FORGETREADERGROUPA 0x00090058	Reader group name
SCARD_IOCTL_FORGETREADERA 0x00090068	Reader name

2.2.2.6 ContextAndStringW_Call

The ContextAndStringW_Call structure contains information used in calls that only require a Smart Cards for Windows context and a Unicode string.

```
typedef struct _ContextAndStringW_Call {  
    REDIR_SCARDCONTEXT Context;  
    [string] const wchar_t* sz;  
} ContextAndStringW_Call;
```

Context: A valid context, as specified in section 2.2.1.1.

sz: The value of this Unicode string depends on the context (based on IOCTL) in which this structure is used.

Value	Meaning
SCARD_IOCTL_INTRODUCEREADERGROUPW 0x00090054	Reader group name
SCARD_IOCTL_FORGETREADERGROUPW 0x0009005C	Reader group name
SCARD_IOCTL_FORGETREADERW 0x0009006C	Reader name

2.2.2.7 ContextAndTwoStringA_Call

The contents of the ContextAndTwoStringA_Call structure are used in those calls that require a valid Smart Cards for Windows context (as specified in section 3.2.5) and two strings (friendly names).

```
typedef struct _ContextAndTwoStringA_Call {
    REDIR_SCARDCONTEXT Context;
    [string] const char* sz1;
    [string] const char* sz2;
} ContextAndTwoStringA_Call;
```

Context: A valid context, as specified in section 2.2.1.1.

sz1: The value of this ASCII string depends on the context (based on IOCTL) in which it is used.

Value	Meaning
SCARD_IOCTL_INTRODUCEREADERA 0x00090060	Reader name
SCARD_IOCTL_ADDREADERTOGROUPA 0x00090070	Reader name
SCARD_IOCTL_REMOVEREADERFROMGROUPA 0x00090078	Reader name

sz2: The value of this ASCII string depends on the context (based on IOCTL) in which it is used.

Value	Meaning
SCARD_IOCTL_INTRODUCEREADERA 0x00090060	Device name
SCARD_IOCTL_ADDREADERTOGROUPA 0x00090070	Reader group name
SCARD_IOCTL_REMOVEREADERFROMGROUPA 0x00090078	Reader group name

2.2.2.8 ContextAndTwoStringW_Call

The contents of the ContextAndTwoStringW_Call structure is used in those calls that require a valid Smart Cards for Windows context (as specified in section 3.2.5) and two strings (friendly names).

```
typedef struct _ContextAndTwoStringW_Call {
    REDIR_SCARDCONTEXT Context;
    [string] const wchar_t* sz1;
    [string] const wchar_t* sz2;
} ContextAndTwoStringW_Call;
```

Context: A valid context, as specified in section 2.2.1.1.

sz1: The value of this Unicode string depends on the context (based on IOCTL) in which it is used.

Value	Meaning
SCARD_IOCTL_INTRODUCEREADERW 0x00090064	Reader name
SCARD_IOCTL_ADDREADERTOGROUPW 0x00090074	Reader name
SCARD_IOCTL_REMOVEREADERFROMGROUPW 0x0009007C	Reader name

sz2: The value of this Unicode string depends on the context (based on IOCTL) in which it is used.

Value	Meaning
SCARD_IOCTL_INTRODUCEREADERW 0x00090064	Device name
SCARD_IOCTL_ADDREADERTOGROUPW 0x00090074	Reader group name
SCARD_IOCTL_REMOVEREADERFROMGROUPW 0x0009007C	Reader group name

2.2.2.9 LocateCardsA_Call

The parameters of the LocateCardsA_Call structure specify the list of smart card readers to search for the specified card types. For call information, see section 3.1.4.21.

```
typedef struct _LocateCardsA_Call {
    REDIR_SCARDCONTEXT Context;
    [range(0, 65536)] unsigned long cBytes;
    [size_is(cBytes)] const byte* mszCards;
    [range(0,10)] unsigned long cReaders;
    [size_is(cReaders)] ReaderStateA* rgReaderStates;
} LocateCardsA_Call;
```

Context: A valid context, as specified in section 2.2.1.1.

cBytes: The number of bytes in the **mszCards** field.

mszCards: An ASCII multistring of card names to locate. Card names MUST be registered in Smart Cards for Windows. Unknown card types MUST be ignored.

cReaders: The number of reader state structures.

rgReaderStates: The reader state information specifying which readers are searched for the cards listed in **mszCards**.

2.2.2.10 LocateCardsW_Call

The parameters of the LocateCardsW_Call structure specify the list of smart card readers to search for the specified card types. For more information, see section 3.1.4.22.

```
typedef struct _LocateCardsW_Call {
    REDIR_SCARDCONTEXT Context;
    [range(0,65536)] unsigned long cBytes;
    [size_is(cBytes)] const byte* mszCards;
    [range(0,10)] unsigned long cReaders;
    [size_is(cReaders)] ReaderStateW* rgReaderStates;
} LocateCardsW_Call;
```

Context: A valid context, as specified in section 2.2.1.1.

cBytes: The number of bytes in the **mszCards** field.

mszCards: A Unicode multistring of card names to locate. Card names MUST be registered in Smart Cards for Windows. Unknown card types MUST be ignored.

cReaders: The number of reader state structures.

rgReaderStates: The reader state information used to locate the cards listed in *mszCards*.

2.2.2.11 GetStatusChangeA_Call

The GetStatusChangeA_Call structure provides the state change in the reader as specified in section 3.1.4.23.

```
typedef struct _GetStatusChangeA_Call {
    REDIR_SCARDCONTEXT Context;
    unsigned long dwTimeOut;
    [range(0,11)] unsigned long cReaders;
    [size_is(cReaders)] ReaderStateA* rgReaderStates;
} GetStatusChangeA_Call;
```

Context: A valid context, as specified in section 2.2.1.1.

dwTimeOut: The maximum amount of time, in milliseconds, to wait for an action. If this member is set to 0xFFFFFFFF (INFINITE), the caller MUST wait until an action occurs.

cReaders: The number of ReaderStates to track.

rgReaderStates: Smart card readers that the caller is tracking.

2.2.2.12 GetStatusChangeW_Call

The GetStatusChangeW_Call structure provides the state change in the Reader as specified in section 3.1.4.24.

```

typedef struct _GetStatusChangeW_Call {
    REDIR_SCARDCONTEXT Context;
    unsigned long dwTimeOut;
    [range(0,11)] unsigned long cReaders;
    [size_is(cReaders)] ReaderStateW* rgReaderStates;
} GetStatusChangeW_Call;

```

Context: A valid context, as specified in section 2.2.1.1.

dwTimeOut: Maximum amount of time, in milliseconds, to wait for an action. If set to 0xFFFFFFFF (INFINITE), the caller MUST wait until an action occurs.

cReaders: The number of ReaderStates to track.

rgReaderStates: Smart card readers that the caller is tracking.

2.2.2.13 ConnectA_Call

ConnectA_Call opens a connection to the smart card located in the reader identified by a reader name.

```

typedef struct _ConnectA_Call {
    [string] const char* szReader;
    Connect_Common Common;
} ConnectA_Call;

```

szReader: An ASCII string specifying the reader name to connect to.

Common: Additional parameters that are required for the Connect call are specified in section 3.1.4.28. For more information, see section 2.2.1.3.

2.2.2.14 ConnectW_Call

The ConnectW_Call structure is used to open a connection to the smart card located in the reader identified by a reader name.

```

typedef struct _ConnectW_Call {
    [string] const wchar_t* szReader;
    Connect_Common Common;
} ConnectW_Call;

```

szReader: A Unicode string specifying the reader name to connect to.

Common: Additional parameters that are required for the Connect call. For more information, see sections 3.1.4.29 and 2.2.1.3.

2.2.2.15 Reconnect_Call

The Reconnect_Call structure is used to reopen a connection to the smart card associated with a valid context. For more information, see section 3.1.4.36.

```

typedef struct _Reconnect_Call {
    REDIR_SCARDHANDLE hCard;
    unsigned long dwShareMode;
    unsigned long dwPreferredProtocols;
    unsigned long dwInitialization;
} Reconnect_Call;

```

hCard: A handle, as specified in section 2.2.1.2.

dwShareMode: A flag that indicates whether other applications can form connections to this card. For acceptable values of this field, see section 2.2.6.

dwPreferredProtocols: A bit mask of acceptable protocols for this connection. For specifics on possible values, see section 2.2.5.

dwInitialization: A type of initialization that SHOULD be performed on the card.

Value	Meaning
SCARD_LEAVE_CARD 0x00000000	Do not do anything.
SCARD_RESET_CARD 0x00000001	Reset the smart card.
SCARD_UNPOWER_CARD 0x00000002	Turn off and reset the smart card.

2.2.2.16 HCardAndDisposition_Call

The HCardAndDisposition_Call structure defines the action taken on the disposition of a smart card associated with a valid context when a connection is terminated.

```
typedef struct _HCardAndDisposition_Call {  
    REDIR_SCARDHANDLE hCard;  
    unsigned long dwDisposition;  
} HCardAndDisposition_Call;
```

hCard: A handle, as specified in section 2.2.1.2.

dwDisposition: The action to take on the card in the connected reader upon close. This value is ignored on a BeginTransaction message call, as specified in section 3.2.5.3.61.

Value	Meaning
SCARD_LEAVE_CARD 0x00000000	Do not do anything.
SCARD_RESET_CARD 0x00000001	Reset the smart card.
SCARD_UNPOWER_CARD 0x00000002	Turn off and reset the smart card.
SCARD_EJECT_CARD 0x00000003	Eject the smart card.

2.2.2.17 State_Call

The State_Call structure defines parameters to the State call (as specified in section 3.1.4.40) for querying the contents of a smart card reader.

```
typedef struct _State_Call {
    REDIR_SCARDHANDLE hCard;
    long fpbAttrIsNULL;
    unsigned long cbAttrLen;
} State_Call;
```

hCard: A handle, as specified in section 2.2.1.2.

fpbAttrIsNULL: A Boolean value specifying whether the caller wants to retrieve the length of the data. Set to FALSE (0x00000000) to allow the data to be returned. Set to TRUE (0x00000001), and only the length of the data will be returned. SHOULD be set to TRUE if **cbAttrLen** is set to SCARD_AUTOALLOCATE (0xFFFFFFFF).

Name	Value
FALSE	0x00000000
TRUE	0x00000001

cbAttrLen: The length of the buffer specified on the TS server side. If **cbAttrLen** is set to SCARD_AUTOALLOCATE with a value of 0xFFFFFFFF, an array of any length can be returned. Otherwise, the returned array MUST NOT exceed **cbAttrLen** bytes in length. When the array to be returned exceeds **cbAttrLen** bytes in length, State_Return.ReturnCode MUST be set to SCARD_E_INSUFFICIENT_BUFFER (0x80100008). Also, **cbAttrLen** is ignored if **fpbAttrIsNULL** is set to TRUE (0x00000001). If **fpbAttrIsNULL** is set to FALSE (0x00000000) but **cbAttrLen** is set to 0x00000000, then the call MUST succeed, State_Return.cbAttrLen MUST be set to the length of the data in bytes, and State_Return.rgAttr MUST be set to NULL.

2.2.2.18 Status_Call

Status_Call obtains the status of a connection for a valid smart card reader handle.

```
typedef struct _Status_Call {
    REDIR_SCARDHANDLE hCard;
    long fmszReaderNamesIsNULL;
    unsigned long cchReaderLen;
    unsigned long cbAttrLen;
} Status_Call;
```

hCard: A handle, as specified in section 2.2.1.2.

fmszReaderNamesIsNULL: A Boolean value specifying whether the caller wants to retrieve the length of the data. Set to FALSE (0x00000000) to allow the data to be returned. Set to TRUE (0x00000001), and only the length of the data will be returned. Also, **cchReaderLen** is ignored if this value is TRUE (0x00000001).

Name	Value
FALSE	0x00000000
TRUE	0x00000001

cchReaderLen: The length of the string buffer specified on the TS server side. If **cchReaderLen** is set to **SCARD_AUTOALLOCATE** with a value of **0xFFFFFFFF**, a string of any length can be returned. Otherwise, the returned string **MUST NOT** exceed **cchReaderLen** characters in length, including any null characters. When the string to be returned exceeds **cchReaderLen** characters in length, including any null characters, **Status_Return.ReturnCode** **MUST** be set to **SCARD_E_INSUFFICIENT_BUFFER** (**0x80100008**). The **cchReaderLen** field **MUST** be ignored if **fmszReaderNamesIsNULL** is **TRUE** (**0x00000001**). Also, if **fmszReaderNamesIsNULL** is set to **FALSE** (**0x00000000**) but **cchReaderLen** is set to **0x00000000**, then the call **MUST** succeed, **Status_Return.cbAtrLen** **MUST** be set to the length of the data in bytes, and **Status_Return.pbAtr** **MUST** be set to **NULL**.

cbAtrLen: Unused. **MUST** be ignored upon receipt.

2.2.2.19 Transmit_Call

The **Transmit_Call** structure is used to send data to the smart card associated with a valid context.

```
typedef struct _Transmit_Call {
    REDIR_SCARDHANDLE hCard;
    SCardIO_Request ioSendPci;
    [range(0,66560)] unsigned long cbSendLength;
    [size_is(cbSendLength)] const byte* pbSendBuffer;
    [unique] SCardIO_Request* pioRecvPci;
    long fpbRecvBufferIsNULL;
    unsigned long cbRecvLength;
} Transmit_Call;
```

hCard: A handle, as specified in section 2.2.1.2.

ioSendPci: A packet specifying input header information as specified in section 2.2.1.8.

cbSendLength: The length, in bytes, of the **pbSendBuffer** field.

pbSendBuffer: The data to be written to the card. The format of the data is specific to an individual card. For more information about data formats, see [ISO/IEC-7816-4] sections 5 through 7.

pioRecvPci: If non-NULL, this field is an **SCardIO_Request** packet that is set up in the same way as the **ioSendPci** field and passed as the **pioRecvPci** parameter of the **Transmit** call. If the value of this is **NULL**, the caller is not requesting the **pioRecvPci** value to be returned.

fpbRecvBufferIsNULL: A Boolean value specifying whether the caller wants to retrieve the length of the data. **MUST** be set to **TRUE** (**0x00000001**) if the caller wants only to retrieve the length of the data; otherwise, it **MUST** be set to **FALSE** (**0x00000000**).

Name	Value
FALSE	0x00000000
TRUE	0x00000001

cbRecvLength: The maximum size of the buffer to be returned. **MUST** be ignored if **fpbRecvBufferIsNULL** is set to **TRUE** (**0x00000001**).

2.2.2.20 Control_Call

Normally, communication is to the smart card via the reader. However, in some cases, the ability to communicate directly with the smart card reader is requested. The **Control_Call** structure provides the ability to talk to the reader.

```

typedef struct _Control_Call {
    REDIR_SCARDHANDLE hCard;
    unsigned long dwControlCode;
    [range(0,66560)] unsigned long cbInBufferSize;
    [unique] [size_is(cbInBufferSize)] const byte *pvInBuffer;
    long fpvOutBufferIsNull;
    unsigned long cbOutBufferSize;
} Control_Call;

```

hCard: A handle, as specified in section 2.2.1.2.

dwControlCode: The control code for the operation. These values are specific to the hardware device. This protocol MUST NOT restrict or define any values for this control codes.

cbInBufferSize: The size in bytes of the **pvInBuffer** field.

pvInBuffer: A buffer that contains the data required to perform the operation. This field SHOULD be NULL if the **dwControlCode** field specifies an operation that does not require input data. Otherwise, this data is specific to the function being performed.

fpvOutBufferIsNull: A Boolean value specifying whether the caller wants to retrieve the length of the data. MUST be set to TRUE (0x00000001) if the caller wants only to retrieve the length of the data; otherwise, it MUST be set to FALSE (0x00000000).

Name	Value
FALSE	0x00000000
TRUE	0x00000001

cbOutBufferSize: The maximum size of the buffer to be returned. This field MUST be ignored if fpvOutBufferIsNull is set to TRUE (0x00000001).

2.2.2.21 GetAttrib_Call

The GetAttrib_Call structure is used to read smart card reader attributes.

```

typedef struct _GetAttrib_Call {
    REDIR_SCARDHANDLE hCard;
    unsigned long dwAttrId;
    long fpbAttrIsNull;
    unsigned long cbAttrLen;
} GetAttrib_Call;

```

hCard: A handle, as specified in section 2.2.1.2.

dwAttrId: An identifier for the attribute to get. For more information on defined attributes, see [PCSC3] section 3.1.2.

fpbAttrIsNull: A Boolean value specifying whether the caller wants to retrieve the length of the data. Set to FALSE (0x00000000) in order to allow the data to be returned. Set to TRUE (0x00000001) and only the length of the data will be returned.

Name	Value
FALSE	0x00000000
TRUE	0x00000001

cbAttrLen: The length of the buffer specified on the TS Server side. If **cbAttrLen** is set to SCARD_AUTOALLOCATE with a value of 0xFFFFFFFF then any buffer length can be returned. Otherwise, the returned buffer MUST NOT exceed **cbAttrLen** bytes in length. When the buffer to be returned exceeds **cbAttrLen** bytes in length, GetAttrib_Return.**ReturnCode** MUST be set to SCARD_E_INSUFFICIENT_BUFFER (0x80100008). The **cbAttrLen** field MUST be ignored if **fpbAttrIsNull** is set to TRUE (0x00000001). Also, if **fpbAttrIsNull** is set to FALSE (0x00000000) but **cbAttrLen** is set to 0x00000000, then the call MUST succeed, GetAttrib_Return.**cbAttrLen** MUST be set to the length of the data, in bytes, and GetAttrib_Return.**pbAttr** MUST be set to NULL.

2.2.2.22 SetAttrib_Call

The SetAttrib_Call structure allows users to set smart card reader attributes.

```
typedef struct _SetAttrib_Call {
    REDIR_SCARDHANDLE hCard;
    unsigned long dwAttrId;
    [range(0,65536)] unsigned long cbAttrLen;
    [size_is(cbAttrLen)] const byte* pbAttr;
} SetAttrib_Call;
```

hCard: A handle, as specified in section 2.2.1.2.

dwAttrId: The identifier of the attribute to set. The values are write-only. For more information on possible values, see [PCSC3] section 3.1.2.

cbAttrLen: The size, in bytes, of the data corresponding to the **pbAttr** field.

pbAttr: A buffer that contains the attribute whose identifier is supplied in the **dwAttrId** field. The format is specific to the value being set.

2.2.2.23 LocateCardsByATRA_Call

The LocateCardsByATRA_Call structure returns information concerning the status of the smart card of interest (ATR).

```
typedef struct _LocateCardsByATRA_Call {
    REDIR_SCARDCONTEXT Context;
    [range(0,1000)] unsigned long cAtrs;
    [size_is(cAtrs)] LocateCards_ATRMask* rgAtrMasks;
    [range(0,10)] unsigned long cReaders;
    [size_is(cReaders)] ReaderStateA* rgReaderStates;
} LocateCardsByATRA_Call;
```

Context: A valid context, as specified in section 2.2.2.13.

cAtrs: The number of bytes in the **rgAtrMasks** field.

rgAtrMasks: An array of ATRs to match against currently inserted cards.

cReaders: The number of elements in the **rgReaderStates** field.

rgReaderStates: The states of the readers that the application is monitoring. The states reflect what the application determines to be the current states of the readers and that might differ from the actual states.

2.2.2.24 LocateCardsByATRW_Call

The LocateCardsByATRW_Call structure returns information concerning the status of the smart card of interest (ATR).

```
typedef struct _LocateCardsByATRW_Call {
    REDIR_SCARDCONTEXT Context;
    [range(0, 1000)] unsigned long cAtrs;
    [size_is(cAtrs)] LocateCards_ATRMask* rgAtrMasks;
    [range(0,10)] unsigned long cReaders;
    [size_is(cReaders)] ReaderStateW* rgReaderStates;
} LocateCardsByATRW_Call;
```

Context: A valid context, as specified in section 2.2.2.14.

cAtrs: The number of bytes in the **rgAtrMasks** field.

rgAtrMasks: An array of ATRs to match against currently inserted cards.

cReaders: The number of elements in the **rgReaderStates** field.

rgReaderStates: The states of the readers that the application is monitoring. The states reflects what the application believes is the current states of the readers and might differ from the actual states.

2.2.2.25 ReadCacheA_Call

The ReadCacheA_Call structure is used to obtain the card and reader information from the cache.

```
typedef struct _ReadCacheA_Call {
    [string] char* szLookupName;
    ReadCache_Common Common;
} ReadCacheA_Call;
```

szLookupName: An ASCII string containing the lookup name.

Common: Additional parameters for the Read Cache call (for additional information, see section 3.1.4.42), as specified in section 2.2.1.9.

2.2.2.26 ReadCacheW_Call

The ReadCacheW_Call structure is used to obtain the card and reader information from the cache.

```
typedef struct _ReadCacheW_Call {
    [string] wchar_t* szLookupName;
    ReadCache_Common Common;
} ReadCacheW_Call;
```

szLookupName: A Unicode string containing the lookup name.

Common: Additional parameters for the Read Cache call (for additional information, see section 3.1.4.43), as specified in section 2.2.1.9.

2.2.2.27 WriteCacheA_Call

The WriteCacheA_Call structure is used to write the card and reader information to the cache.

```

typedef struct _WriteCacheA_Call {
    [string] char* szLookupName;
    WriteCache_Common Common;
} WriteCacheA_Call;

```

szLookupName: An ASCII string containing the lookup name.

Common: Additional parameters for the Write Cache call (for more information, see section 3.1.4.44), as specified in section 2.2.1.10.

2.2.2.28 WriteCacheW_Call

The WriteCacheW_Call structure is used to write the card and reader information to the cache.

```

typedef struct _WriteCacheW_Call {
    [string] wchar_t* szLookupName;
    WriteCache_Common Common;
} WriteCacheW_Call;

```

szLookupName: An Unicode string containing the lookup name.

Common: Additional parameters for the Write Cache call (for more information, see section 2.2.1.10).

2.2.2.29 GetTransmitCount_Call

The GetTransmitCount_Call structure is used to obtain the number of transmit calls sent to the card since the reader was introduced.

```

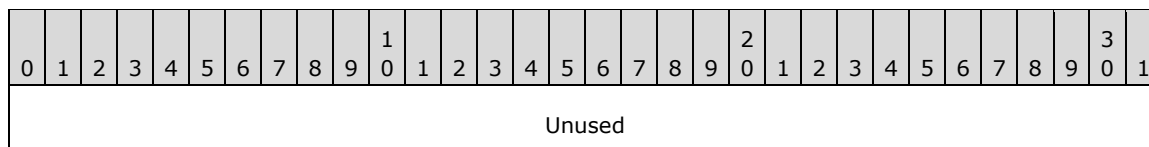
typedef struct _GetTransmitCount_Call {
    REDIR_SCARDHANDLE hCard;
} GetTransmitCount_Call;

```

hCard: A handle, as specified in section 2.2.1.2.

2.2.2.30 ScardAccessStartedEvent_Call

ScardAccessStartedEvent_Call is just an uninitialized 4-byte buffer that is sent as the IOCTL requires a payload. There is no corresponding serialized structure for this call.



Unused (4 bytes): The field is uninitialized. It SHOULD contain random data and MUST be ignored on receipt.

2.2.2.31 GetReaderIcon_Call

The GetReaderIcon_Call structure is used to obtain the reader icon from the smart card reader's INF file.

```

typedef struct _GetReaderIcon_Call {
    REDIR_SCARDCONTEXT Context;
}

```

```
[string] wchar_t* szReaderName;  
} GetReaderIcon_Call;
```

Context: A valid context, as specified in section 2.2.1.1.

szReaderName: A Unicode string containing the reader name.

2.2.2.32 GetDeviceTypeId_Call

The GetDeviceTypeId_Call structure is used to obtain the reader's device ID from the smart card reader's INF file.

```
typedef struct _GetDeviceTypeId_Call {  
    REDIR_SCARDCONTEXT Context;  
    [string] wchar_t* szReaderName;  
} GetDeviceTypeId_Call;
```

Context: A valid context, as specified in section 2.2.1.1.

szReaderName: A Unicode string containing the lookup name.

2.2.3 TS Client-Generated Structures

These structures originate from the client process and compose part of the return packet. If the **ReturnCode** field of the structure is nonzero, all other fields **MUST** be set to zero and **MUST** be ignored on receipt.

2.2.3.1 ReadCache_Return

The ReadCache_Return structure is used to obtain the data that corresponds to the lookup item requested in ReadCacheA_Call as specified in section 2.2.2.25, or ReadCacheW_Call as specified in section 2.2.2.26. For more call information, see sections 3.1.4.42 and 3.1.4.43.

```
typedef struct _ReadCache_Return {  
    long ReturnCode;  
    [range(0,65536)] unsigned long cbDataLen;  
    [unique] [size_is(cbDataLen)] byte *pbData;  
} ReadCache_Return;
```

ReturnCode: HRESULT or Win32 Error codes. Zero indicates success; any other value indicates failure.

cbDataLen: The number of bytes in the **pbData** field.

pbData: The value of the look up item.

2.2.3.2 EstablishContext_Return

The EstablishContext_Return structure is used to provide a response to an Establish Context call (for more information, see section 3.1.4.1.)

```
typedef struct _EstablishContext_Return {  
    long ReturnCode;  
    REDIR_SCARDCONTEXT Context;  
} EstablishContext_Return;
```

ReturnCode: HRESULT or Win32 Error code. Zero indicates success; any other value indicates failure.

Context: A valid context, as specified in section 2.2.1.1.

2.2.3.3 Long_Return

The Long_Return structure is used for return codes for calls that return only a long value.

```
typedef struct _long_Return {  
    long ReturnCode;  
} long_Return;
```

ReturnCode: HRESULT or Win32 Error code. Zero indicates success; any other value indicates failure.

2.2.3.4 ListReaderGroups_Return and ListReaders_Return

The ListReaderGroups_Return and ListReaders_Return structures are used to obtain results for those calls that return a multistring, in addition to a long return value. For more information, see sections 3.1.4.5, 3.1.4.6, 3.1.4.7, and 3.1.4.8.

```
typedef struct _longAndMultiString_Return {  
    long ReturnCode;  
    [range(0,65536)] unsigned long cBytes;  
    [unique] [size_is(cBytes)] byte *msz;  
} ListReaderGroups_Return, ListReaders_Return;
```

ReturnCode: HRESULT or Win32 Error code. The value returned from the Smart Card Redirection call.

cBytes: The number of bytes in the **msz** array field.

msz: The meaning of this field is specific to the context (IOCTL) in which it is used.

Value	Meaning
SCARD_IOCTL_LISTREADERSA 0x00090028	ASCII multistring of readers on the system.
SCARD_IOCTL_LISTREADERSW 0x0009002C	Unicode multistring of readers on the system.
SCARD_IOCTL_LISTREADERGROUPSA 0x00090020	ASCII multistring of reader groups on the system.
SCARD_IOCTL_LISTREADERGROUPSW 0x00090024	Unicode multistring of reader groups on the system.

2.2.3.5 LocateCards_Return and GetStatusChange_Return

The LocateCards_Return and GetStatusChange_Return structures are used to obtain the results on those calls that return updated reader state information. (for more information, see sections 3.1.4.21, 3.1.4.22, 3.1.4.23, 3.1.4.24, 3.1.4.25, and 3.1.4.26).

```
typedef struct _LocateCards_Return {
    long ReturnCode;
    [range(0, 10)] unsigned long cReaders;
    [size_is(cReaders)] ReaderState_Return *rgReaderStates;
} LocateCards_Return,
GetStatusChange_Return;
```

ReturnCode: HRESULT or Win32 Error code. Zero indicates success; any other value indicates failure.

cReaders: The number of elements in the **rgReaderStates** field.

rgReaderStates: The current states of the readers being watched.

2.2.3.6 Control_Return

The Control_Return structure is used to obtain information from a Control_Call (for more information, see section 3.1.4.37).

```
typedef struct _Control_Return {
    long ReturnCode;
    [range(0, 66560)] unsigned long cbOutBufferSize;
    [unique] [size_is(cbOutBufferSize)] byte *pvOutBuffer;
} Control_Return;
```

ReturnCode: HRESULT or Win32 Error code. Zero indicates success; any other value indicates failure.

cbOutBufferSize: The number of bytes in the **pvOutBuffer** field.

pvOutBuffer: Contains the return data specific to the value of the Control_Call structure.

2.2.3.7 Reconnect_Return

The Reconnect_Return structure is used to obtain return information from a Reconnect call (for more information, see section 3.1.4.36).

```
typedef struct Reconnect_Return {
    long ReturnCode;
    unsigned long dwActiveProtocol;
} Reconnect_Return;
```

ReturnCode: HRESULT or Win32 Error code. Zero indicates success; any other value indicates failure.

dwActiveProtocol: A flag that indicates the established active protocol. For more information on acceptable values, see section 2.2.5 .

2.2.3.8 Connect_Return

The Connect_Return structure is used to obtain return information from a Connect call (for more information, see sections 3.1.4.28 and 3.1.4.29).

```
typedef struct _Connect_Return {
    long ReturnCode;
    REDIR_SCARDHANDLE hCard;
```

```
    unsigned long dwActiveProtocol;
} Connect_Return;
```

ReturnCode: HRESULT or Win32 Error code. Zero indicates success; any other value indicates failure.

hCard: A handle, as specified in section 2.2.1.2.

dwActiveProtocol: A value that indicates the active smart card transmission protocol. Possible values are specified in section 2.2.5.

2.2.3.9 State_Return

The State_Return structure defines return information about the state of the smart card reader (for more information, see section 3.1.4.40).

```
typedef struct _State_Return {
    long ReturnCode;
    unsigned long dwState;
    unsigned long dwProtocol;
    [range(0,36)] unsigned long cbAtrLen;
    [unique] [size_is(cbAtrLen)] byte *rgAtr;
} State_Return;
```

ReturnCode: HRESULT or Win32 Error code. Zero indicates success; any other value indicates failure.

dwState: The current state of the smart card in the Reader. Possible values are specified in section 2.2.4.

dwProtocol: The current protocol, if any. Possible values are specified in section 2.2.5.

cbAtrLen: The number of bytes in the **rgAtr** field.

rgAtr: A pointer to a buffer that receives the ATR string from the currently inserted card, if available.

2.2.3.10 Status_Return

The Status_Return structure defines return information about the status of the smart card reader (for more information, see sections 3.1.4.33 and 3.1.4.34).

```
typedef struct _Status_Return {
    long ReturnCode;
    [range(0,65536)] unsigned long cBytes;
    [unique] [size_is(cBytes)] byte *mszReaderNames;
    unsigned long dwState;
    unsigned long dwProtocol;
    byte pbAtr[32];
    [range(0,32)] unsigned long cbAtrLen;
} Status_Return;
```

ReturnCode: HRESULT or Win32 Error code. Zero indicates success; any other value indicates failure.

cBytes: The number of bytes in the **mszReaderNames** field.

mszReaderNames: A multistring containing the names that the reader is known by. The value of this is dependent on the context (IOCTL) that it is used.

Value	Meaning
SCARD_IOCTL_STATUSA 0x000900C8	ASCII multistring
SCARD_IOCTL_STATUSW 0x000900CC	Unicode multistring

dwState: The current state of the smart card in the reader. Possible values are specified in section 2.2.4.

dwProtocol: The current protocol, if any. Possible values are specified in section 2.2.5.

pbAtr: A pointer to a buffer that receives the ATR string from the currently inserted card, if available.

cbAtrLen: The number of bytes in the ATR string.

2.2.3.11 Transmit_Return

The Transmit_Return structure defines return information from a smart card after a Transmit call (for more information, see section 3.1.4.35).

```
typedef struct _Transmit_Return {
    long ReturnCode;
    [unique] SCardIO_Request *pioRecvPci;
    [range(0, 66560)] unsigned long cbRecvLength;
    [unique] [size_is(cbRecvLength)] byte *pbRecvBuffer;
} Transmit_Return;
```

ReturnCode: HRESULT or Win32 Error code. Zero indicates success; any other value indicates failure.

pioRecvPci: The protocol header structure for the instruction, followed by a buffer in which to receive any returned protocol control information (PCI) that is specific to the protocol in use. If this field is NULL, a protocol header MUST NOT be returned.

cbRecvLength: The size, in bytes, of the **pbRecvBuffer** field.

pbRecvBuffer: The data returned from the card.

2.2.3.12 GetAttrib_Return

The GetAttrib_Return structure defines attribute information from a smart card reader (for more information, see section 3.1.4.38).

```
typedef struct _GetAttrib_Return {
    long ReturnCode;
    [range(0, 65536)] unsigned long cbAttrLen;
    [unique] [size_is(cbAttrLen)] byte *pbAttr;
} GetAttrib_Return;
```

ReturnCode: HRESULT or Win32 Error code. Zero indicates success; any other value indicates failure.

cbAttrLen: The number of bytes in the **pbAttr** field.

pbAttr: A pointer to an array that contains any values returned from the corresponding call.

2.2.3.13 GetTransmitCount_Return

The GetTransmitCount_Return structure defines the number of transmit calls that were performed on the smart card reader (for more information, see section 3.1.4.41).

```
typedef struct _GetTransmitCount_Return {
    long ReturnCode;
    unsigned long cTransmitCount;
} GetTransmitCount_Return;
```

ReturnCode: HRESULT or Win32 Error code. Zero indicates success; any other value indicates failure.

cTransmitCount: The field specifies the number of successful Transmit calls (for more information, see section 3.1.4.35) performed on the reader since it was introduced to the system.

2.2.3.14 GetReaderIcon_Return

The GetReaderIcon_Return structure is used to obtain the data that corresponds to the lookup item requested in the **GetReaderIcon_Call** as specified in section 2.2.2.31. For more information, see section 3.1.4.48.

```
typedef struct _GetReaderIcon_Return {
    long ReturnCode;
    [range(0, 4194304)] unsigned long cbDataLen;
    [unique, size_is(cbDataLen)] byte* pbData;
} GetReaderIcon_Return;
```

ReturnCode: HRESULT or Win32 error code. Zero indicates success; any other value indicates failure.

cbDataLen: The number of bytes in the **pbData** field.

pbData: The value of the lookup item.

2.2.3.15 GetDeviceTypeId_Return

The GetDeviceTypeId_Return structure is used to obtain the data that corresponds to the lookup item requested in **GetDeviceTypeId_Call** as specified in section 2.2.2.32. For more information, see section 3.1.4.47.

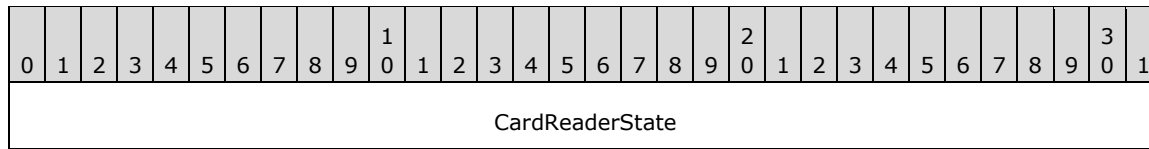
```
typedef struct _GetDeviceTypeId_Return {
    long ReturnCode;
    unsigned long dwDeviceId;
} GetDeviceTypeId_Return;
```

ReturnCode: HRESULT or Win32 error code. Zero indicates success; any other value indicates failure.

dwDeviceId: The value of the lookup item.

2.2.4 Card/Reader State

The following represents the current state of the smart card reader according to Smart Cards for Windows.

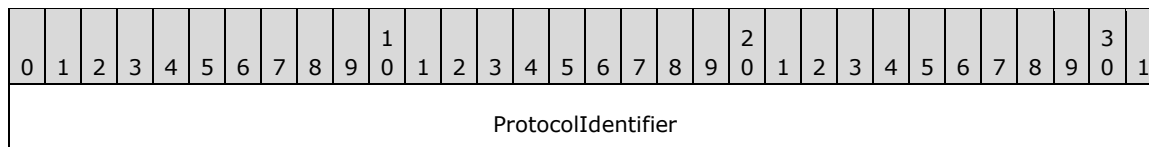


CardReaderState (4 bytes): One of the following values.

Value	Meaning
SCARD_UNKNOWN 0x00000000	The current state of the reader is unknown.
SCARD_ABSENT 0x00000001	There is no card in the reader.
SCARD_PRESENT 0x00000002	There is a card in the reader but it has not been moved into position for use.
SCARD_SWALLOWED 0x00000003	There is a card in the reader in position for use. The card is not powered.
SCARD_POWERED 0x00000004	There is power being applied to the card but the mode of the card is unknown.
SCARD_NEGOTIABLE 0x00000005	The card has been reset and is awaiting PTS negotiation.
SCARD_SPECIFICMODE 0x00000006	The card has been reset and specific communication protocols have been established.

2.2.5 Protocol Identifier

A Protocol Identifier.



ProtocolIdentifier (4 bytes): This field MUST have a value from Table A which is logically OR'ed with a value from Table B.

Table A

Value	Meaning
SCARD_PROTOCOL_UNDEFINED 0x00000000	No transmission protocol is active.
SCARD_PROTOCOL_T0 0x00000001	Transmission protocol 0 (T=0) is active. It is the asynchronous half-duplex character transmission protocol.
SCARD_PROTOCOL_T1 0x00000002	Transmission protocol 1 (T=1) is active. It is the asynchronous half-duplex block transmission protocol.
SCARD_PROTOCOL_Tx	Bitwise OR combination of both of the two International Standards Organization (ISO) transmission protocols SCARD_PROTOCOL_T0

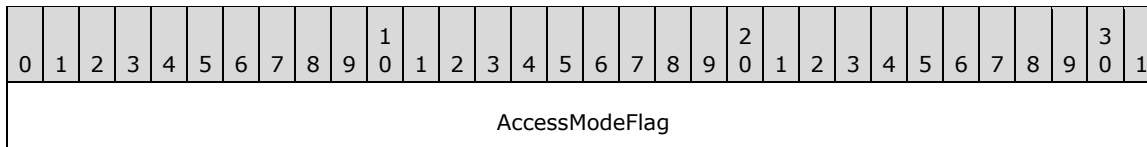
Value	Meaning
0x00000003	and SCARD_PROTOCOL_T1. This value can be used as a bitmask.
SCARD_PROTOCOL_RAW 0x00010000	Transmission protocol raw is active. The data from the smart card is raw and does not conform to any transmission protocol.

Table B

Value	Meaning
SCARD_PROTOCOL_DEFAULT 0x80000000	A bitwise OR with this value forces the use of the default transmission parameters and card clock frequency.
SCARD_PROTOCOL_OPTIMAL 0x00000000	Optimal transmission parameters and card clock frequency MUST be used. This flag is considered the default. No actual value is defined for this flag; it is there for compatibility with [PCSC5] section 3.1.3.

2.2.6 Access Mode Flags

Access mode flags provide possible values for applications to connect to the smart card.

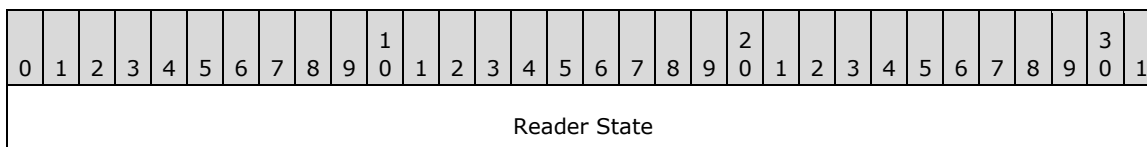


AccessModeFlag (4 bytes): One of the following possible values:

Value	Meaning
SCARD_SHARE_EXCLUSIVE 0x00000001	This application is not willing to share this smart card with other applications.
SCARD_SHARE_SHARED 0x00000002	This application is willing to share this smart card with other applications.
SCARD_SHARE_DIRECT 0x00000003	This application demands direct control of the smart card reader; therefore, it is not available to other applications.

2.2.7 Reader State

The Reader State packet has a sub-structure as shown in the following table.



Reader State (4 bytes): Both the **dwCurrentState** field and the **dwEventState** field, found in the ReaderState_Common_Call (section 2.2.1.5) and ReaderState_Return (section 2.2.1.11) structures, consist of the following two subfields.

0	1	2	3	4	5	6	7	8	9	0	1	2	3	4	5	6	7	8	9	0	1	2	3	4	5	6	7	8	9	0	1
Count																State															

Count (2 bytes): The contents of this field depend on the value of the associated reader name. If the reader name (for more information, see sections 2.2.1.6 and 2.2.1.7 for the **szReader** field) is \\?PnP?\Notification, then **Count** is a count of the number of readers installed on the system and all bits except SCARD_STATE_CHANGED in **State** MUST be zero. Otherwise, **Count** is a count of the number of times a card has been inserted and/or removed from the smart card reader being monitored.

State (2 bytes): The state of a reader. The value MUST be according to the following table.

Value	Meaning
SCARD_STATE_UNAWARE 0x0000	The application requires the current state but does not know it. The use of this value results in an immediate return from state transition monitoring services.
SCARD_STATE_IGNORE 0x0001	The application requested that this reader be ignored. If this bit is set in the dwCurrentState field of a ReaderState_Common_Call structure, other bits MUST NOT be set in the dwEventState field of the corresponding ReaderState_Return structure.
SCARD_STATE_CHANGED 0x0002	There is a difference between the state believed by the application, and the state known by Smart Cards for Windows.
SCARD_STATE_UNKNOWN 0x0004	The reader name is not recognized by Smart Cards for Windows. If this bit is set in the dwEventState field of the ReaderState_Return structure, both SCARD_STATE_IGNORE and SCARD_STATE_CHANGED values MUST be set. This bit SHOULD NOT be set in the dwCurrentState field of a ReaderState_Common_Call structure.
SCARD_STATE_UNAVAILABLE 0x0008	The actual state of this reader is not available. If this bit is set, all of the following bits MUST be clear.
SCARD_STATE_EMPTY 0x0010	There is no card in the reader. If this bit is set, all of the following bits MUST be clear.
SCARD_STATE_PRESENT 0x0020	There is a card in the reader.
SCARD_STATE_ATRMATCH 0x0040	There is a card in the reader with an ATR that matches one of the target cards. If this bit is set, SCARD_STATE_PRESENT MUST be set.
SCARD_STATE_EXCLUSIVE 0x0080	The card in the reader is allocated for exclusive use by another application. If this bit is set, SCARD_STATE_PRESENT MUST be set.
SCARD_STATE_INUSE 0x0100	The card in the reader is in use by one or more other applications, but it can be connected to in shared mode. If this bit is set, SCARD_STATE_PRESENT MUST be set.
SCARD_STATE_MUTE 0x0200	The card in the reader is unresponsive or is not supported by the reader or software.
SCARD_STATE_UNPOWERED 0x0400	This implies that the card in the reader has not been turned on.

2.2.8 Return Code

The following Smart Card Facility Codes for Windows-specific return codes MAY be returned by the protocol server to the protocol client and are of the data type NTSTATUS, with the **sev** field set to STATUS_SEVERITY_WARNING (0x2) and the reserved bit (**N**) set to 0.

0	1	2	3	4	5	6	7	8	9	0	1	2	3	4	5	6	7	8	9	0	1	2	3	4	5	6	7	8	9	0	1
ReturnCode																															

ReturnCode (4 bytes): One of the following return codes:

Value	Meaning
SCARD_S_SUCCESS 0x00000000	No error has occurred.
SCARD_F_INTERNAL_ERROR 0x80100001	An internal consistency check failed.
SCARD_E_CANCELLED 0x80100002	The action was canceled by a Cancel request.
SCARD_E_INVALID_HANDLE 0x80100003	The supplied handle was invalid.
SCARD_E_INVALID_PARAMETER 0x80100004	One or more of the supplied parameters could not be properly interpreted.
SCARD_E_INVALID_TARGET 0x80100005	Registry startup information is missing or invalid.
SCARD_E_NO_MEMORY 0x80100006	Not enough memory available to complete this command.
SCARD_F_WAITED_TOO_LONG 0x80100007	An internal consistency timer has expired.
SCARD_E_INSUFFICIENT_BUFFER 0x80100008	The data buffer to receive returned data is too small for the returned data.
SCARD_E_UNKNOWN_READER 0x80100009	The specified reader name is not recognized.
SCARD_E_TIMEOUT 0x8010000A	The user-specified time-out value has expired.
SCARD_E_SHARING_VIOLATION 0x8010000B	The smart card cannot be accessed because of other connections outstanding.
SCARD_E_NO_SMARTCARD 0x8010000C	The operation requires a smart card, but no smart card is currently in the device.
SCARD_E_UNKNOWN_CARD 0x8010000D	The specified smart card name is not recognized.
SCARD_E_CANT_DISPOSE	The system could not dispose of the media in the requested

Value	Meaning
0x8010000E	manner.
SCARD_E_PROTO_MISMATCH 0x8010000F	The requested protocols are incompatible with the protocol currently in use with the smart card.
SCARD_E_NOT_READY 0x80100010	The reader or smart card is not ready to accept commands.
SCARD_E_INVALID_VALUE 0x80100011	One or more of the supplied parameters values could not be properly interpreted.
SCARD_E_SYSTEM_CANCELLED 0x80100012	The action was canceled by the system, presumably to log off or shut down.
SCARD_F_COMM_ERROR 0x80100013	An internal communications error has been detected.
SCARD_F_UNKNOWN_ERROR 0x80100014	An internal error has been detected, but the source is unknown.
SCARD_E_INVALID_ATR 0x80100015	An ATR obtained from the registry is not a valid ATR string.
SCARD_E_NOT_TRANSACTED 0x80100016	An attempt was made to end a non-existent transaction.
SCARD_E_READER_UNAVAILABLE 0x80100017	The specified reader is not currently available for use.
SCARD_P_SHUTDOWN 0x80100018	The operation has been stopped to allow the server application to exit.
SCARD_E_PCI_TOO_SMALL 0x80100019	The PCI Receive buffer was too small.
SCARD_E_ICC_INSTALLATION 0x80100020	No primary provider can be found for the smart card.
SCARD_E_ICC_CREATEORDER 0x80100021	The requested order of object creation is not supported.
SCARD_E_UNSUPPORTED_FEATURE 0x80100022	This smart card does not support the requested feature.
SCARD_E_DIR_NOT_FOUND 0x80100023	The specified directory does not exist in the smart card.
SCARD_E_FILE_NOT_FOUND 0x80100024	The specified file does not exist in the smart card.
SCARD_E_NO_DIR 0x80100025	The supplied path does not represent a smart card directory.
SCARD_E_READER_UNSUPPORTED 0x8010001A	The reader device driver does not meet minimal requirements for support.
SCARD_E_DUPLICATE_READER	The reader device driver did not produce a unique reader

Value	Meaning
0x8010001B	name.
SCARD_E_CARD_UNSUPPORTED 0x8010001C	The smart card does not meet minimal requirements for support.
SCARD_E_NO_SERVICE 0x8010001D	Smart Cards for Windows is not running.
SCARD_E_SERVICE_STOPPED 0x8010001E	Smart Cards for Windows has shut down.
SCARD_E_UNEXPECTED 0x8010001F	An unexpected card error has occurred.
SCARD_E_NO_FILE 0x80100026	The supplied path does not represent a smart card file.
SCARD_E_NO_ACCESS 0x80100027	Access is denied to this file.
SCARD_E_WRITE_TOO_MANY 0x80100028	The smart card does not have enough memory to store the information.
SCARD_E_BAD_SEEK 0x80100029	There was an error trying to set the smart card file object pointer.
SCARD_E_INVALID_CHV 0x8010002A	The supplied PIN is incorrect.
SCARD_E_UNKNOWN_RES_MSG 0x8010002B	An unrecognized error code was returned from a layered component.
SCARD_E_NO_SUCH_CERTIFICATE 0x8010002C	The requested certificate does not exist.
SCARD_E_CERTIFICATE_UNAVAILABLE 0x8010002D	The requested certificate could not be obtained.
SCARD_E_NO_READERS_AVAILABLE 0x8010002E	Cannot find a smart card reader.
SCARD_E_COMM_DATA_LOST 0x8010002F	A communications error with the smart card has been detected. Retry the operation.
SCARD_E_NO_KEY_CONTAINER 0x80100030	The requested key container does not exist.
SCARD_E_SERVER_TOO_BUSY 0x80100031	Smart Cards for Windows is too busy to complete this operation.
SCARD_E_PIN_CACHE_EXPIRED 0x80100032	The smart card PIN cache has expired.
SCARD_E_NO_PIN_CACHE 0x80100033	The smart card PIN cannot be cached.
SCARD_E_READ_ONLY_CARD	The smart card is read-only and cannot be written to.

Value	Meaning
0x80100034	
SCARD_W_UNSUPPORTED_CARD 0x80100065	The reader cannot communicate with the smart card due to ATR configuration conflicts.
SCARD_W_UNRESPONSIVE_CARD 0x80100066	The smart card is not responding to a reset.
SCARD_W_UNPOWERED_CARD 0x80100067	Power has been removed from the smart card, so that further communication is impossible.
SCARD_W_RESET_CARD 0x80100068	The smart card has been reset, so any shared state information is invalid.
SCARD_W_REMOVED_CARD 0x80100069	The smart card has been removed, so that further communication is impossible.
SCARD_W_SECURITY_VIOLATION 0x8010006A	Access was denied because of a security violation.
SCARD_W_WRONG_CHV 0x8010006B	The card cannot be accessed because the wrong PIN was presented.
SCARD_W_CHV_BLOCKED 0x8010006C	The card cannot be accessed because the maximum number of PIN entry attempts has been reached.
SCARD_W_EOF 0x8010006D	The end of the smart card file has been reached.
SCARD_W_CANCELLED_BY_USER 0x8010006E	The action was canceled by the user.
SCARD_W_CARD_NOT_AUTHENTICATED 0x8010006F	No PIN was presented to the smart card.
SCARD_W_CACHE_ITEM_NOT_FOUND 0x80100070	The requested item could not be found in the cache.
SCARD_W_CACHE_ITEM_STALE 0x80100071	The requested cache item is too old and was deleted from the cache.
SCARD_W_CACHE_ITEM_TOO_BIG 0x80100072	The new cache item exceeds the maximum per-item size defined for the cache.

3 Protocol Details

The following sections specify details of the Remote Desktop Protocol: Smart Card Virtual Channel Extension, including abstract data models, interface method syntax, and message processing rules.

3.1 Protocol Server Details

3.1.1 Abstract Data Model

This section describes a conceptual model of a possible data organization that an implementation maintains to participate in this protocol. The described organization is provided to facilitate the explanation of how the protocol behaves. This document does not mandate that implementations adhere to this model provided that their external behavior is consistent with that described in this document.

The protocol server relies on an implementation of Smart Cards for Windows.

The following state **MUST** be kept by this protocol:

dwDeviceId: The device id assigned by Remote Desktop Protocol: File System Virtual Channel Extension that identifies this protocol.

rgSCardContextList: List of contexts opened by the protocol server.

3.1.2 Timers

None.

3.1.3 Initialization

Initialization is triggered by the Remote Desktop Protocol: File System Virtual Channel Extension when it enumerates all pre-logon devices. At this time, TS client initialization is performed.

If the TS server operating system version is earlier than 5.1, the device is not announced to the TS server.

The **dwDeviceId** field **MUST** be set to the device Id selected by Remote Desktop Protocol: File System Virtual Channel Extension, and **rgSCardContextList** **MUST** be set to the empty list.

3.1.4 Message Processing Events and Sequencing Rules

Only messages of type DR_CONTROL_REQ and DR_CONTROL_RSP (as specified in [MS-RDPEFS] sections 2.2.1.4.5 and 2.2.1.5.5, respectively) are valid for this protocol. All other messages **MUST** be processed according to the Remote Desktop Protocol: File System Virtual Channel Extension.

Only the control codes specified in the IOCTL Processing Rules in the following table are valid. Invalid packets **MUST** be dropped without a reply.

Function number	Value for IoControlCode	IRP_MJ_DEVICE_CONTROL request	Input packet, Output packet
5	0x00090014	SCARD_IOCTL_ESTABLISHCONTEXT	EstablishContext_Call (section 2.2.2.1), EstablishContext_Return (section 2.2.3.2)

Function number	Value for IoControlCode	IRP_MJ_DEVICE_CONTROL request	Input packet, Output packet
6	0x00090018	SCARD_IOCTL_RELEASECONTEXT	Context_Call (section 2.2.2.2), Long_Return (section 2.2.3.3)
7	0x0009001C	SCARD_IOCTL_ISVALIDCONTEXT	Context_Call (section 2.2.2.2), Long_Return (section 2.2.3.3)
8	0x00090020	SCARD_IOCTL_LISTREADERGROUPSA	ListReaderGroups_Call (section 2.2.2.3), ListReaderGroups_Return (section 2.2.3.4)
9	0x00090024	SCARD_IOCTL_LISTREADERGROUPSW	ListReaderGroups_Call (section 2.2.2.3), ListReaderGroups_Return (section 2.2.3.4)
10	0x00090028	SCARD_IOCTL_LISTREADERSA	ListReaders_Call (section 2.2.2.4), ListReaders_Return (section 2.2.3.4)
11	0x0009002C	SCARD_IOCTL_LISTREADERSW	ListReaders_Call (section 2.2.2.4), ListReaders_Return (section 2.2.3.4)
20	0x00090050	SCARD_IOCTL_INTRODUCEREADERGROU UPA	ContextAndStringA_Call (section 2.2.2.5), Long_Return (section 2.2.3.3)
21	0x00090054	SCARD_IOCTL_INTRODUCEREADERGRO UPW	ContextAndStringW_Call (section 2.2.2.6), Long_Return (section 2.2.3.3)
22	0x00090058	SCARD_IOCTL_FORGETREADERGROUPA	ContextAndStringA_Call (section 2.2.2.5), Long_Return (section 2.2.3.3)
23	0x0009005C	SCARD_IOCTL_FORGETREADERGROUP W	ContextAndStringW_Call (section 2.2.2.6), Long_Return (section 2.2.3.3)
24	0x00090060	SCARD_IOCTL_INTRODUCEREADERA	ContextAndTwoStringA_Call (section 2.2.2.7), Long_Return (section 2.2.3.3)
25	0x00090064	SCARD_IOCTL_INTRODUCEREADERW	ContextAndTwoStringW_Call (section 2.2.2.8), Long_Return (section 2.2.3.3)
26	0x00090068	SCARD_IOCTL_FORGETREADERA	ContextAndStringA_Call (section 2.2.2.5), Long_Return (section 2.2.3.3)
27	0x0009006C	SCARD_IOCTL_FORGETREADERW	ContextAndStringW_Call (section 2.2.2.6), Long_Return (section 2.2.3.3)
28	0x00090070	SCARD_IOCTL_ADDREADERTOGROUPA	ContextAndTwoStringA_Call (section 2.2.2.7), Long_Return (section 2.2.3.3)
29	0x00090074	SCARD_IOCTL_ADDREADERTOGROUPW	ContextAndTwoStringW_Call (section 2.2.2.8), Long_Return (section 2.2.3.3)
30	0x00090078	SCARD_IOCTL_REMOVEREADERFROMG ROUPA	ContextAndTwoStringA_Call (section 2.2.2.7), Long_Return (section 2.2.3.3)
31	0x0009007C	SCARD_IOCTL_REMOVEREADERFROMG ROUPW	ContextAndTwoStringW_Call (section 2.2.2.8), Long_Return (section 2.2.3.3)
38	0x00090098	SCARD_IOCTL_LOCATECARDSA	LocateCardsA_Call (section 2.2.2.9), LocateCards_Return (section 2.2.3.5)
39	0x0009009C	SCARD_IOCTL_LOCATECARDSW	LocateCardsW_Call (section 2.2.2.10), LocateCards_Return (section 2.2.3.5)

Function number	Value for IoControlCode	IRP_MJ_DEVICE_CONTROL request	Input packet, Output packet
40	0x000900A0	SCARD_IOCTL_GETSTATUSCHANGEA	GetStatusChangeA_Call (section 2.2.2.11) , GetStatusChange_Return (section 2.2.3.5)
41	0x000900A4	SCARD_IOCTL_GETSTATUSCHANGEW	GetStatusChangeW_Call (section 2.2.2.12) , GetStatusChange_Return (section 2.2.3.5)
42	0x000900A8	SCARD_IOCTL_CANCEL	Context_Call (section 2.2.2.2), Long_Return (section 2.2.3.3)
43	0x000900AC	SCARD_IOCTL_CONNECTA	ConnectA_Call (section 2.2.2.13), Connect_Return (section 2.2.3.8)
44	0x000900B0	SCARD_IOCTL_CONNECTW	ConnectW_Call (section 2.2.2.14), Connect_Return (section 2.2.3.8)
45	0x000900B4	SCARD_IOCTL_RECONNECT	Reconnect_Call (section 2.2.2.15), Reconnect_Return (section 2.2.3.7)
46	0x000900B8	SCARD_IOCTL_DISCONNECT	HCardAndDisposition_Call (section 2.2.2.16), Long_Return (section 2.2.3.3)
47	0x000900BC	SCARD_IOCTL_BEGINTRANSACTION	HCardAndDisposition_Call (section 2.2.2.16), Long_Return (section 2.2.3.3)
48	0x000900C0	SCARD_IOCTL_ENDTRANSACTION	HCardAndDisposition_Call (section 2.2.2.16), Long_Return (section 2.2.3.3)
49	0x000900C4	SCARD_IOCTL_STATE	State_Call (section 2.2.2.17), State_Return (section 2.2.3.9)
50	0x000900C8	SCARD_IOCTL_STATUSA	Status_Call (section 2.2.2.18), Status_Return (section 2.2.3.10)
51	0x000900CC	SCARD_IOCTL_STATUSW	Status_Call (section 2.2.2.18), Status_Return (section 2.2.3.10)
52	0x000900D0	SCARD_IOCTL_TRANSMIT	Transmit_Call (section 2.2.2.19), Transmit_Return (section 2.2.3.11)
53	0x000900D4	SCARD_IOCTL_CONTROL	Control_Call (section 2.2.2.20), Control_Return (section 2.2.3.6)
54	0x000900D8	SCARD_IOCTL_GETATTRIB	GetAttrib_Call (section 2.2.2.21), GetAttrib_Return (section 2.2.3.12)
55	0x000900DC	SCARD_IOCTL_SETATTRIB	SetAttrib_Call (section 2.2.2.22), Long_Return (section 2.2.3.3)
56	0x000900E0	SCARD_IOCTL_ACCESSSTARTEDEVENT	ScardAccessStartedEvent_Call (section 2.2.2.30), Long_Return (section 2.2.3.3)
57	0x000900E4	SCARD_IOCTL_RELEASESTARTEDEVENT	Not used.
58	0x000900E8	SCARD_IOCTL_LOCATECARDSBYATRA	LocateCardsByATRA_Call (section 2.2.2.23), LocateCards_Return (section 2.2.3.5)
59	0x000900EC	SCARD_IOCTL_LOCATECARDSBYATRW	LocateCardsByATRW_Call (section 2.2.2.2)

Function number	Value for IoControlCode	IRP_MJ_DEVICE_CONTROL request	Input packet, Output packet
			4), LocateCards_Return (section 2.2.3.5)
60	0x000900F0	SCARD_IOCTL_READCACHEA	ReadCacheA_Call (section 2.2.2.25), ReadCache_Return (section 2.2.3.1)
61	0x000900F4	SCARD_IOCTL_READCACHEW	ReadCacheW_Call (section 2.2.2.26), ReadCache_Return (section 2.2.3.1)
62	0x000900F8	SCARD_IOCTL_WRITECACHEA	WriteCacheA_Call (section 2.2.2.27), Long_Return (section 2.2.3.3)
63	0x000900FC	SCARD_IOCTL_WRITECACHEW	WriteCacheW_Call (section 2.2.2.28), Long_Return (section 2.2.3.3)
64	0x00090100	SCARD_IOCTL_GETTRANSMITCOUNT	GetTransmitCount_Call (section 2.2.2.29), GetTransmitCount_Return (section 2.2.3.13)
65	0x00090104	SCARD_IOCTL_GETREADERICON	GetReaderIcon_Call (section 2.2.2.31), GetReaderIcon_Return (section 2.2.3.14)
66	0x00090108	SCARD_IOCTL_GETDEVICETYPEID	GetDeviceTypeId_Call (section 2.2.2.32), GetDeviceTypeId_Return (section 2.2.3.15)

The TS client MUST be able to process multiple requests simultaneously within the limits of its resources.

Any errors from the Smart Cards for Windows layer MUST be transferred to the TS server and MUST NOT be modified by the TS client. No exceptions are thrown in this protocol.

The following steps MUST be performed on each call packet received:

1. The IoControlCode MUST be present, as specified in the preceding IOCTL Processing Rules table, for the specific protocol version implemented. <2>
2. The input data type is interpreted according to the IOCTL Processing Rules table. The data MUST be decoded as specified in [MS-RPCE] section 2.2.6.
3. Processing MUST be performed according to the corresponding section that follows. On success, it MUST return a structure as specified in the preceding IOCTL Processing Rules table.
4. If the protocol encounters problems decoding the input or encoding the results, then DR_DEVICE_IOCOMPLETION.IOStatus (as specified in [MS-RDPEFS] section 2.2.1.5) MUST be set to an NTSTATUS code (as specified in [MS-ERREF] section 2.3), the most common of which appear in the following table.

Return value/code	Description
STATUS_NO_MEMORY 0xC0000017	Not enough virtual memory or paging file quota is available to complete the specified operation.
STATUS_UNSUCCESSFUL 0xC0000001	The requested operation was unsuccessful.

Return value/code	Description
STATUS_BUFFER_TOO_SMALL 0xC0000023	The buffer is too small to contain the entry. No information has been written to the buffer.

5. On error, DR_DEVICE_IOCTLCOMPLETION.Parameters.DeviceIOControl.OutputBufferLength MUST be set to zero and DR_DEVICE_IOCTLCOMPLETION.Parameters.DeviceIOControl.OutputBuffer MUST set to NULL.
6. Otherwise, DR_DEVICE_IOCTLCOMPLETION.IOStatus MUST be set to 0 (STATUS_SUCCESS) and DR_DEVICE_IOCTLCOMPLETION.Parameters.DeviceIOControl.OutputBuffer MUST contain an encoding of the structure (as specified in the preceding Message Processing Events and Sequencing Rules IOCTL Table) as specified in [MS-RPCE] section 2.2.6. DR_DEVICE_IOCTLCOMPLETION.Parameters.DeviceIOControl.OutputBufferLength is the length of the data.
7. The return packet is then sent according to Remote Desktop Protocol: File System Virtual Channel Extension.

3.1.4.1 SCARD_IOCTL_ESTABLISHCONTEXT (IOCTL 0x00090014)

Establish Context creates a new Smart Cards for Windows context specified for use in subsequent communication with Smart Cards for Windows.

Return Values: This method sets EstablishContext_Return.ReturnCode to SCARD_S_SUCCESS on success; otherwise, it sets one of the smart card-specific errors or one of the return codes from Winerror.h. No specialized error codes are associated with this method.

If the call is successful, EstablishContext_Return.Context MUST be added to the rgSCardContextList list maintained by this client.

3.1.4.2 SCARD_IOCTL_RELEASECONTEXT (IOCTL 0x00090018)

Release Context releases a previously established Smart Cards for Windows context as specified in section 3.1.4.1. The context MUST exist in **rgSCardContextList**.

Return Values: This method sets Long_Return.ReturnCode (for more information, see section 2.2.3.3) to SCARD_S_SUCCESS on success; otherwise, it sets one of the smart card-specific errors or one of the return codes from Winerror.h. No specialized error codes are associated with this method.

If the call is successful, Context_Call.Context (for more information, see section 2.2.2.2) is removed from rgSCardContextList.

3.1.4.3 SCARD_IOCTL_ISVALIDCONTEXT (IOCTL 0x0009001C)

Is Valid Context checks if a previously established Smart Cards for Windows context from SCARD_IOCTL_ESTABLISHCONTEXT is still valid. For this call to succeed, Context_Call.Context (for more information, see section 2.2.2.2) MUST exist in rgSCardContextList and the Smart Cards for Windows communication channel MUST still be present.

Return Values: This method sets Long_Return.ReturnCode (for more information, see section 2.2.3.3) to SCARD_S_SUCCESS on success; otherwise, it sets one of the smart card-specific errors or one of the return codes from Winerror.h. No specialized error codes are associated with this method.

3.1.4.4 SCARD_IOCTL_ACCESSSTARTEDEVENT (IOCTL 0x000900E0)

Access Started Event waits until Smart Cards for Windows is running.

Return Values: This method sets Long_Return.ReturnCode (for more information, see section 2.2.3.3) to SCARD_S_SUCCESS if Smart Cards for Windows is running; otherwise, it sets one of the smart card-specific errors or one of the return codes from Winerror.h. No specialized error codes are associated with this method.

3.1.4.5 SCARD_IOCTL_LISTREADERGROUPSA (IOCTL 0x00090020)

The ASCII version List Reader Groups returns the reader groups known to Smart Cards for Windows. ListReaderGroups_Return is constructed according to ListReaderGroups_Return and ListReaders_Return and the information in ListReaderGroups_Call.

Return Values: This method sets ListReaderGroups_Return.ReturnCode (for more information, see section 2.2.3.4) to SCARD_S_SUCCESS on success; otherwise, it sets one of the smart card-specific errors or one of the return codes from Winerror.h. No specialized error codes are associated with this method.

3.1.4.6 SCARD_IOCTL_LISTREADERGROUPSW (IOCTL 0x00090024)

The Unicode version List Reader Groups returns the reader groups known to Smart Cards for Windows. ListReaderGroups_Return is constructed according to ListReaderGroups_Return and ListReaders_Return and the information in ListReaderGroups_Call.

Return Values: This method sets ListReaderGroups_Return.ReturnCode (for more information, see section 2.2.3.4) to SCARD_S_SUCCESS on success; otherwise, it sets one of the smart card-specific errors or one of the return codes from Winerror.h. No specialized error codes are associated with this method.

3.1.4.7 SCARD_IOCTL_LISTREADERSA (IOCTL 0x00090028)

The ASCII version of List Readers returns the smart card readers known to Smart Cards for Windows. ListReaders_Return is constructed according to ListReaderGroups_Return and ListReaders_Return and ListReaders_Call.

Return Values: The method sets ListReaders_Return.ReturnCode (for more information, see section 2.2.3.4) to SCARD_S_SUCCESS on success; otherwise, it sets one of the smart card-specific errors or one of the return codes from Winerror.h. No specialized error codes are associated with this method.

3.1.4.8 SCARD_IOCTL_LISTREADERSW (IOCTL 0x0009002C)

The Unicode version of List Readers returns the smart card readers known to Smart Cards for Windows. ListReaders_Return is constructed according to ListReaderGroups_Return and ListReaders_Return and ListReaders_Call.

Return Values: The method sets ListReaders_Return.ReturnCode (for more information, see section 2.2.3.4) to SCARD_S_SUCCESS on success; otherwise, it sets one of the smart card-specific errors or one of the return codes from Winerror.h. No specialized error codes are associated with this method.

3.1.4.9 SCARD_IOCTL_INTRODUCEREADERGROUPA (IOCTL 0x00090050)

The ASCII version of Introduce Reader Group adds the reader group specified in ContextAndStringA_Call.sz (for more information, see section 2.2.2.5) to the list of reader groups known to Smart Cards for Windows.

Return Values: The method sets Long_Return.ReturnCode (for more information, see section 2.2.3.3) to SCARD_S_SUCCESS on success; otherwise, it sets one of the smart card-specific errors or one of the return codes from Winerror.h. No specialized error codes are associated with this method.

3.1.4.10 SCARD_IOCTL_INTRODUCEREADERGROUPW (IOCTL 0x00090054)

The Unicode version of Introduce Reader Group adds the reader group specified in ContextAndStringW_Call.sz (for more information, see section 2.2.2.6) to the list of reader groups known to Smart Cards for Windows.

Return Values: The method sets Long_Return.ReturnCode (for more information, see section 2.2.3.3) to SCARD_S_SUCCESS on success; otherwise, it sets one of the smart card-specific errors or one of the return codes from Winerror.h. No specialized error codes are associated with this method.

3.1.4.11 SCARD_IOCTL_FORGETREADERGROUPA (IOCTL 0x00090058)

The ASCII version of Forget Reader Group removes the reader group specified in ContextAndStringA_Call.sz (for more information, see section 2.2.2.5) from the list of reader groups known to the Smart Cards for Windows.

Return Values: The method sets Long_Return.ReturnCode (for more information, see section 2.2.3.3) to SCARD_S_SUCCESS on success; otherwise, it sets one of the smart card-specific errors or one of the return codes from Winerror.h. No specialized error codes are associated with this method.

3.1.4.12 SCARD_IOCTL_FORGETREADERGROUPW (IOCTL 0x0009005C)

The Unicode version of Forget Reader Group removes the reader group specified in ContextAndStringW_Call.sz (for more information, see section 2.2.2.6) from the list of reader groups known to Smart Cards for Windows.

Return Values: The method sets Long_Return.ReturnCode (for more information, see section 2.2.3.3) to SCARD_S_SUCCESS on success; otherwise, it sets one of the smart card-specific errors or one of the return codes from Winerror.h. No specialized error codes are associated with this method.

3.1.4.13 SCARD_IOCTL_INTRODUCEREADERA (IOCTL 0x00090060)

The ASCII version of Introduce Reader adds the device name specified in ContextAndTwoStringA_Call.sz2 (for more information, see section 2.2.2.7) to the smart card reader specified in ContextAndTwoStringA_Call.sz1.

Return Values: The method sets Long_Return.ReturnCode (for more information, see section 2.2.3.3) to SCARD_S_SUCCESS on success; otherwise, it sets one of the smart card-specific errors or one of the return codes from Winerror.h. No specialized error codes are associated with this method.

3.1.4.14 SCARD_IOCTL_INTRODUCEREADERW (IOCTL 0x00090064)

The Unicode version of Introduce Reader adds the device name specified in ContextAndTwoStringW_Call.sz2 (for more information, see section 2.2.2.8) to the smart card reader specified in ContextAndTwoStringW_Call.sz1.

Return Values: The method sets Long_Return.ReturnCode (for more information, see section 2.2.3.3) to SCARD_S_SUCCESS on success; otherwise, it sets one of the smart card-specific errors or one of the return codes from Winerror.h. No specialized error codes are associated with this method.

3.1.4.15 SCARD_IOCTL_FORGETREADERA (IOCTL 0x00090068)

The ASCII version of Forget Reader removes the smart card reader specified in ContextAndStringA_Call.sz (for more information, see section 2.2.2.5) from the list of smart card readers known to Smart Cards for Windows.

Return Values: The method sets Long_Return.ReturnCode (for more information, see section 2.2.3.3) to SCARD_S_SUCCESS on success; otherwise, it sets one of the smart card-specific errors or one of the return codes from Winerror.h. No specialized error codes are associated with this method.

3.1.4.16 SCARD_IOCTL_FORGETREADERW (IOCTL 0x0009006C)

The Unicode version of Forget Reader removes the smart card reader specified in ContextAndStringW_Call.sz (for more information, see section 2.2.2.6) from the list of smart card readers known to Smart Cards for Windows.

Return Values: The method sets Long_Return.ReturnCode (for more information, see section 2.2.3.3) to SCARD_S_SUCCESS on success; otherwise, it sets one of the smart card-specific errors or one of the return codes from Winerror.h. No specialized error codes are associated with this method.

3.1.4.17 SCARD_IOCTL_ADDREADERTOGROUPA (IOCTL 0x00090070)

The ASCII version of Add Reader to Group adds the smart card reader specified in ContextAndTwoStringA_Call.sz2 (for more information, see section 2.2.2.7).

Return Values: The method sets Long_Return.ReturnCode (for more information, see section 2.2.3.3) to SCARD_S_SUCCESS on success; otherwise, it sets one of the smart card-specific errors or one of the return codes from Winerror.h. No specialized error codes are associated with this method.

3.1.4.18 SCARD_IOCTL_ADDREADERTOGROUPW (IOCTL 0x00090074)

The Unicode version of Add Reader to Group adds the smart card reader specified in ContextAndTwoStringW_Call.sz2 (for more information, see section 2.2.2.8).

Return Values: The method sets Long_Return.ReturnCode (for more information, see section 2.2.3.3) to SCARD_S_SUCCESS on success; otherwise, it sets one of the smart card-specific errors or one of the return codes from Winerror.h. No specialized error codes are associated with this method.

3.1.4.19 SCARD_IOCTL_REMOVEREADERFROMGROUPA (IOCTL 0x00090078)

The ASCII version of Remove Reader From Group removes the smart card reader specified in ContextAndTwoStringA_Call.sz2 (for more information, see section 2.2.2.7).

Return Values: The method sets Long_Return.ReturnCode (for more information, see section 2.2.3.3) to SCARD_S_SUCCESS on success; otherwise, it sets one of the smart card-specific errors or one of the return codes from Winerror.h. No specialized error codes are associated with this method.

3.1.4.20 SCARD_IOCTL_REMOVEREADERFROMGROUPW (IOCTL 0x0009007C)

The Unicode version of Remove Reader From Group removes the smart card reader specified in ContextAndTwoStringW_Call.sz2 (for more information, see section 2.2.2.8).

Return Values: The method sets Long_Return.ReturnCode (for more information, see section 2.2.3.3) to SCARD_S_SUCCESS on success; otherwise, it sets one of the smart card-specific errors or one of the return codes from Winerror.h. No specialized error codes are associated with this method.

3.1.4.21 SCARD_IOCTL_LOCATECARDSA (IOCTL 0x00090098)

The ASCII version of Locate Cards searches the readers specified in LocateCardsA_Call.msCards (for more information, see section 2.2.2.9). Unknown Card Types MUST be ignored. LocateCards_Return is constructed according to LocateCards_Return and GetStatusChange_Return by using the information in LocateCardsA_Call.

Return Values: The method sets LocateCards_Return.ReturnCode (for more information, see section 2.2.3.5) to SCARD_S_SUCCESS on success; otherwise, it sets one of the smart card-specific errors or one of the return codes from Winerror.h. No specialized error codes are associated with this method.

3.1.4.22 SCARD_IOCTL_LOCATECARDSW (IOCTL 0x0009009C)

The Unicode version of Locate Cards searches the readers specified in LocateCardsW_Call.msCards (for more information, see section 2.2.2.10). Unknown Card Types MUST be ignored. LocateCards_Return is constructed according to LocateCards_Return and GetStatusChange_Return by using the information in LocateCardsW_Call.

Return Values: The method sets LocateCards_Return.ReturnCode to SCARD_S_SUCCESS on success; otherwise it sets one of the smart card-specific errors or one of the return codes from Winerror.h. No specialized error codes are associated with this method.

3.1.4.23 SCARD_IOCTL_GETSTATUSCHANGEA (IOCTL 0x000900A0)

The ASCII version of Get Status Change monitors the smart card readers specified in GetStatusChangeA_Call.rgReaderStates (for more information, see section 2.2.2.11) MUST correctly represent the state of the Readers as known by Smart Cards for Windows.

Return Values: The method sets GetStatusChange_Return.ReturnCode to SCARD_S_SUCCESS on success; otherwise, it sets one of the smart card-specific errors or one of the return codes from Winerror.h. No specialized error codes are associated with this method.

3.1.4.24 SCARD_IOCTL_GETSTATUSCHANGEW (IOCTL 0x000900A4)

The Unicode version of Get Status Change monitors the smart card readers specified in GetStatusChangeW_Call.rgReaderStates (for more information, see section 2.2.2.12) MUST correctly represent the state of the readers as known by Smart Cards for Windows.

Return Values: The method sets GetStatusChange_Return.ReturnCode to SCARD_S_SUCCESS on success; otherwise, it sets one of the smart card-specific errors or one of the return codes from Winerror.h. No specialized error codes are associated with this method.

3.1.4.25 SCARD_IOCTL_LOCATECARDSBYATRA (IOCTL 0x000900E8)

The ASCII version of Locate Cards By ATR searches the Readers specified in LocateCardsByATRA_Call.rgAtrMasks (for more information, see section 2.2.2.23). Unknown card types MUST be ignored. LocateCards_Return is constructed according to LocateCards_Return and GetStatusChange_Return by using the information in LocateCardsByATRA_Call.

Return Values: The method sets LocateCards_Return.ReturnCode (for more information, see section 2.2.3.5) to SCARD_S_SUCCESS on success; otherwise, it sets one of the smart card-specific errors or one of the return codes from Winerror.h. No specialized error codes are associated with this method.

3.1.4.26 SCARD_IOCTL_LOCATECARDSBYATRW (IOCTL 0x000900EC)

The Unicode version of Locate Cards By ATR searches the readers specified in LocateCardsByATRW_Call.rgAtrMasks (LocateCardsByATRW_Call). Unknown Card Types MUST be ignored. LocateCards_Return is constructed according to LocateCards_Return and GetStatusChange_Return by using the information in LocateCardsByATRW_Call.

Return Values: The method sets LocateCards_Return.ReturnCode (for more information, see section 2.2.3.5) to SCARD_S_SUCCESS on success; otherwise, it sets one of the smart card-specific errors or one of the return codes from Winerror.h. No specialized error codes are associated with this method.

3.1.4.27 SCARD_IOCTL_CANCEL (IOCTL 0x000900A8)

The Cancel method MUST instruct Smart Cards for Windows to cancel any outstanding calls by using the context specified by Context_Call.Context (for more information, see section 2.2.2.2).

Return Values: The method sets Long_Return.ReturnCode (for more information, see section 2.2.3.3) to SCARD_S_SUCCESS on success; otherwise, it sets one of the smart card-specific errors or one of the return codes from Winerror.h. No specialized error codes are associated with this method.

3.1.4.28 SCARD_IOCTL_CONNECTA (IOCTL 0x000900AC)

The ASCII version of Connect establishes a handle to a smart card reader. On success, Connect_Return is initialized according to Control_Return.

Return Values: The method sets the Connect_Return.ReturnCode (for more information, see section 2.2.3.8) to SCARD_S_SUCCESS on success; otherwise, it sets one of the smart card-specific errors or one of the return codes from Winerror.h. No specialized error codes are associated with this method.

3.1.4.29 SCARD_IOCTL_CONNECTW (IOCTL 0x000900B0)

The Unicode version of Connect establishes a smart card reader handle. On success, Connect_Return is initialized according to Control_Return and the caller is given a handle to execute additional methods on the reader.

Return Values: The method sets the Connect_Return.ReturnCode (for more information, see section 2.2.3.8) to SCARD_S_SUCCESS on success; otherwise, it sets one of the smart card-specific errors or one of the return codes from Winerror.h. No specialized error codes are associated with this method.

3.1.4.30 SCARD_IOCTL_DISCONNECT (IOCTL 0x000900B8)

The disconnect method releases a smart card reader handle that was acquired in ConnectA_Call or ConnectW_Call, using HCardAndDisposition_Call.dwDisposition. After a successful call, The smart card reader handle is released and MUST be made available to the system.

Return Values: The method sets Long_Return.ReturnCode to SCARD_S_SUCCESS on success; otherwise, it sets one of the smart card-specific errors or one of the return codes from Winerror.h. No specialized error codes are associated with this method.

3.1.4.31 SCARD_IOCTL_BEGINTRANSACTION (IOCTL 0x000900BC)

The Begin Transaction method locks a smart card reader for exclusive access for the specified smart card reader handle. If the caller is unable to receive exclusive access, this call MUST block until the request can be met.

Return Values: The method sets Long_Return.ReturnCode (for more information, see section 2.2.3.3) to SCARD_S_SUCCESS on success; otherwise, it sets one of the smart card-specific errors or one of the return codes from Winerror.h. No specialized error codes are associated with this method.

3.1.4.32 SCARD_IOCTL_ENDTRANSACTION (IOCTL 0x000900C0)

The End Transaction method releases a smart card reader after being locked by a previously successful call to Begin Transaction (for more information, see section 3.1.4.31).

Return Values: The method sets Long_Return.ReturnCode (for more information, see section 2.2.3.3) to SCARD_S_SUCCESS on success; otherwise, it sets one of the smart card-specific errors or one of the return codes from Winerror.h. No specialized error codes are associated with this method.

3.1.4.33 SCARD_IOCTL_STATUSA (IOCTL 0x000900C8)

The ASCII version of the Status call returns the current state of the smart card reader and any smart card inserted. On success, Status_Return MUST be initialized according to Status_Return.

Return Values: The method sets Status_Return.ReturnCode (for more information, see section 2.2.3.10) to SCARD_S_SUCCESS on success; otherwise, it sets one of the smart card-specific errors or one of the return codes from Winerror.h. No specialized error codes are associated with this method.

3.1.4.34 SCARD_IOCTL_STATUSW (IOCTL 0x000900CC)

The Unicode version of the Status call returns the current state of the smart card reader and any smart card inserted. On success, Status_Return MUST be initialized according to Status_Return.

Return Values: The method sets Status_Return.ReturnCode (for more information, see section 2.2.3.10) to SCARD_S_SUCCESS on success; otherwise, it sets one of the smart card-specific errors or one of the return codes from Winerror.h. No specialized error codes are associated with this method.

3.1.4.35 SCARD_IOCTL_TRANSMIT (IOCTL 0x000900D0)

The Transmit function sends a command to a smart card inserted to the smart card reader associated with the smart card reader handle. On success, the command has been successfully sent to the card and the response has been placed in Transmit_Return.

Return Values: The method sets Transmit_Return.ReturnCode (for more information, see section 2.2.3.11) to SCARD_S_SUCCESS on success; otherwise, it sets one of the smart card-specific errors or one of the return codes from Winerror.h. No specialized error codes are associated with this method.

3.1.4.36 SCARD_IOCTL_RECONNECT (IOCTL 0x000900B4)

The reconnect method re-establishes a smart card reader handle. On success, the handle is valid once again.

Return Values: The method sets Reconnect_Return.ReturnCode (for more information, see section 2.2.3.7) to SCARD_S_SUCCESS on success; otherwise, it sets one of the smart card-specific errors or one of the return codes from Winerror.h. No specialized error codes are associated with this method.

3.1.4.37 SCARD_IOCTL_CONTROL (IOCTL 0x000900D4)

The Control function sends a command to a smart card reader associated with the smart card reader handle. On success, the command has been successfully sent to the smart card reader and the response has been placed in Control_Return.

Return Values: The method sets Control_Return.ReturnCode (for more information, see section 2.2.3.6) to SCARD_S_SUCCESS on success; otherwise, it sets one of the smart card-specific errors or one of the return codes from Winerror.h. No specialized error codes are associated with this method.

3.1.4.38 SCARD_IOCTL_GETATTRIB (IOCTL 0x000900D8)

The Get Attribute function requests an attribute of the smart card reader associated with the smart card reader handle. On success, the attribute is copied to GetAttrib_Return.

Return Values: The method sets GetAttrib_Return.ReturnCode (for more information, see section 2.2.3.12) to SCARD_S_SUCCESS on success; otherwise, it sets one of the smart card-specific errors

or one of the return codes from Winerror.h. No specialized error codes are associated with this method.

3.1.4.39 SCARD_IOCTL_SETATTRIB (IOCTL 0x000900DC)

The Set Attribute function changes the value of an attribute of the smart card reader associated with the smart card reader handle.

Return Values: The method sets Long_Return.ReturnCode (for more information, see section 2.2.3.3) to SCARD_S_SUCCESS on success; otherwise, it sets one of the smart card-specific errors or one of the return codes from Winerror.h. No specialized error codes are associated with this method.

3.1.4.40 SCARD_IOCTL_STATE (IOCTL 0x000900C4)

The State method returns the current state of the smart card reader and any smart card inserted. On success, Status_Return MUST be initialized as specified in section 2.2.3.10.

Return Values: The method sets State_Return.ReturnCode (for more information, see section 2.2.3.9) to SCARD_S_SUCCESS on success; otherwise, it sets one of the smart card-specific errors or one of the return codes from Winerror.h. No specialized error codes are associated with this method.

3.1.4.41 SCARD_IOCTL_GETTRANSMITCOUNT (IOCTL 0x00090100)

The Get Transmit Count retrieves the number of times a successful Transmit method (for more information, see section 3.1.4.35) has been performed on the smart card reader. On success, GetTrasmitCount_Return MUST be initialized as specified in section 2.2.3.13.

Return Values: The method sets State_Return.ReturnCode (for more information, see section 2.2.3.9) to SCARD_S_SUCCESS on success; otherwise, it sets one of the smart card-specific errors or one of the return codes from Winerror.h. No specialized error codes are associated with this method.

3.1.4.42 SCARD_IOCTL_READCACHEA (IOCTL 0x000900F0)

The ASCII version of Read Cache retrieves cached data for a specific smart card. Data is cached according to the smart card UUID (ReadCacheA_Call.Common.CardIdentifier; for more information, see section 2.2.1.9), the Card Lookup Name (ReadCacheA_Call.szLookupName; for more information, see section 2.2.2.25), and the freshness of the data (ReadCacheA_Call.Common.FreshnessCounter; for more information, see section 2.2.1.9). All three MUST match in order for this call to be successful. On success, ReadCache_Return MUST be initialized as specified in section 2.2.3.1.

Return Values: The method sets ReadCache_Return.ReturnCode (for more information, see section 2.2.3.1) to SCARD_S_SUCCESS on success; otherwise, it sets one of the smart card-specific errors or one of the return codes from Winerror.h. No specialized error codes are associated with this method.

3.1.4.43 SCARD_IOCTL_READCACHEW (IOCTL 0x000900F4)

The Unicode version of Read Cache retrieves cached data for a specific smart card in a Smart Cards for Windows cache. Data is cached according to the smart card UUID (ReadCacheA_Call.Common.CardIdentifier; for more information, see section 2.2.1.9), the Card Lookup Name (ReadCacheW_Call.szLookupName; for more information, see section 2.2.2.26), and the freshness of the data (ReadCacheW_Call.Common.FreshnessCounter; for more information, see section 2.2.1.9). All three MUST match in order for this call to be successful. On success, ReadCache_Return MUST be initialized as specified in section 2.2.3.1.

Return Values: The method sets ReadCache_Return.ReturnCode (for more information, see section 2.2.3.1) to SCARD_S_SUCCESS on success; otherwise, it sets one of the smart card-specific errors or one of the return codes from Winerror.h. No specialized error codes are associated with this method.

3.1.4.44 SCARD_IOCTL_WRITECACHEA (IOCTL 0x000900F8)

The ASCII version of Write Cache stores data for a specific smart card in a Smart Cards for Windows cache. Data is cached according to the smart card UUID (`ReadCacheA_Call.szLookupName`; for more information, see section 2.2.2.25), and the freshness of the data (`ReadCacheA_Call.Common.FreshnessCounter`).

Return Values: The method sets `Long_Return.ReturnCode` (for more information, see section 2.2.3.3) to `SCARD_S_SUCCESS` on success; otherwise, it sets one of the smart card-specific errors or one of the return codes from `Winerror.h`. No specialized error codes are associated with this method

3.1.4.45 SCARD_IOCTL_WRITECACHEW (IOCTL 0x000900FC)

The Unicode version of Write Cache stores data for a specific smart card in a Smart Cards for Windows cache. Data is cached according to the smart card UUID (`ReadCacheA_Call.szLookupName`; for more information, see section 2.2.2.25), and the freshness of the data (`ReadCacheA_Call.Common.FreshnessCounter`).

Return Values: The method sets `Long_Return.ReturnCode` (for more information, see section 2.2.3.3) to `SCARD_S_SUCCESS` on success; otherwise, it sets one of the smart card-specific errors or one of the return codes from `Winerror.h`. No specialized error codes are associated with this method

3.1.4.46 SCARD_IOCTL_RELEASETARTEDEVENT

The `SCARD_IOCTL_RELEASETARTEDEVENT` IOCTL value is not used.

3.1.4.47 SCARD_IOCTL_GETREADERICON (IOCTL 0x00090104)

Get Reader Icon retrieves the icon from the INF file for a specific smart card reader name (for more information, see **GetReaderIcon_Call.szReaderName**, section 2.2.2.31). On success, **GetReaderIcon_Return.pbData** contains the icon; for more information, see section 2.2.3.14.

Return Values: This method sets **GetReaderIcon_Return.ReturnCode** (for more information, see section 2.2.3.14) to `SCARD_S_SUCCESS` on success; otherwise, it sets one of the smart card-specific errors or another error code. No specialized error codes are associated with this method.

3.1.4.48 SCARD_IOCTL_GETDEVICETYPEID (IOCTL 0x00090108)

Get Device Type ID retrieves the device type from the INF file for a specific smart card reader name (**GetDeviceTypeId_Call.szReaderName**; for more information, see section 2.2.2.32). On success, **GetDeviceTypeId_Return.dwDeviceId** contains the device type ID; for more information, see section 2.2.3.15.

Return Values: This method sets **GetDeviceTypeId_Return.ReturnCode** (for more information, see section 2.2.3.15) to `SCARD_S_SUCCESS` on success; otherwise, it sets one of the smart card-specific errors or another error code. No specialized error codes are associated with this method.

3.1.5 Timer Events

None.

3.1.6 Other Local Events

On protocol termination, the following actions are performed.

For each context in `rgSCardContextList`, `Cancel` is called causing all outstanding messages to be processed. After there are no more outstanding messages, `Release Context` is called on each context and the context **MUST** be removed from `rgSCardContextList`.

3.2 Protocol Client Details

3.2.1 Abstract Data Model

This section describes a conceptual model of possible data organization that an implementation maintains to participate in this protocol. The described organization is provided to facilitate the explanation of how the protocol behaves. This document does not mandate that implementations adhere to this model provided that their external behavior is consistent with that described in this document.

The following state **MUST** be kept by this protocol:

dwDeviceId: device ID of smart card redirection device.

rgOutstandingMessages: Outstanding call packets have not received a return packet.

3.2.2 Timers

No timers are required.

3.2.3 Initialization

Initialization occurs when the protocol server sends a device-announce message according to Remote Desktop Protocol: File System Virtual Channel Extension. At that time, **dwDeviceId** **MUST** receive the unique device ID announced. The **rgOutstandingMessage** field **MUST** be set to the empty list.

3.2.4 Higher-Layer Triggered Events

None.

3.2.5 Message Processing Events and Sequencing Rules

3.2.5.1 Sending Outgoing Messages

Messages are constructed according to Remote Desktop Protocol: File System Virtual Channel Extension as a device I/O control message on the redirected device **dwDeviceId**. The call packet **MUST** follow the format specified in IOCTL Processing Rules. The structure **MUST** be encoded as specified in [MS-RPCE] section 2. The output buffer length **SHOULD** be set to 2,048 bytes.

The message is sent to the protocol server by using a transport as specified in [MS-RDPEFS] section 2.1.

3.2.5.2 Processing Incoming Replies

The following steps **MUST** be applied to each message when they are received.

If `IOStatus` is `STATUS_BUFFER_TOO_SMALL`, then the message **SHOULD** be retransmitted according to Sending Outgoing Messages, doubling the previously requested buffer length.

If `IOStatus` is zero, the corresponding `IoControlCode`-specific reply processing **MUST** be performed.

Otherwise, the call is considered a failure and the error MUST be propagated to the higher layer.

3.2.5.3 Messages

3.2.5.3.1 Sending EstablishContext Message

IoControlCode MUST be set to SCARD_IOCTL_ESTABLISHCONTEXT.

EstablishContext_Call MUST be initialized as specified in section 2.2.2.1.

3.2.5.3.2 Processing EstablishContext Reply

The OutputBuffer MUST be decoded as EstablishContext_Return, as specified in [MS-RPCE] section 2.2.6.

3.2.5.3.3 Sending ReleaseContext Message

IoControlCode MUST be set to SCARD_IOCTL_RELEASECONTEXT.

Context_Call MUST be initialized, as specified in section 2.2.2.2.

3.2.5.3.4 Processing ReleaseContext Reply

The response message MUST be decoded as Long_Return, as specified in [MS-RPCE] section 2.2.6.

3.2.5.3.5 Sending IntroduceReader (ASCII) Message

IoControlCode MUST be set to SCARD_IOCTL_INTRODUCEREADERA.

ContextAndTwoStringA_Call MUST be initialized as specified in section 2.2.2.7 for a SCARD_IOCTL_INTRODUCEREADERA call.

3.2.5.3.6 Processing IntroduceReader (ASCII) Reply

The OutputBuffer MUST be decoded as a Long_Return.

3.2.5.3.7 Sending IntroduceReader (Unicode) Message

IoControlCode MUST be set to SCARD_IOCTL_INTRODUCEREADERW.

ContextAndTwoStringW_Call MUST be initialized, as specified in section 2.2.2.8, for a SCARD_IOCTL_INTRODUCEREADERW call.

3.2.5.3.8 Processing IntroduceReader (Unicode) Reply

The OutputBuffer MUST be decoded as Long_Return, as specified in [MS-RPCE] section 2.2.6.

3.2.5.3.9 Sending ForgetReader (ASCII) Message

IoControlCode MUST be set to SCARD_IOCTL_FORGETREADER.

ContextAndStringA_Call MUST be initialized, as specified in section 2.2.2.5, for a SCARD_IOCTL_FORGETREADER call.

3.2.5.3.10 Processing ForgetReader (ASCII) Reply

The OutputBuffer MUST be decoded as Long_Return, as specified in [MS-RPCE] section 2.2.6.

3.2.5.3.11 Sending ForgetReader (Unicode) Message

IoControlCode MUST be set to SCARD_IOCTL_FORGETREADERW.

ContextAndStringW_Call MUST be initialized, as specified in section 2.2.2.6, for a SCARD_IOCTL_FORGETREADERW call.

3.2.5.3.12 Processing ForgetReader (Unicode) Reply

The OutputBuffer MUST be decoded as Long_Return, as specified in [MS-RPCE] section 2.2.6.

3.2.5.3.13 Sending IntroduceReaderGroup (ASCII) Message

IoControlCode MUST be set to SCARD_IOCTL_INTRODUCEREADERGROUPA.

ContextAndStringA_Call MUST be initialized, as specified in section 2.2.2.5, for a SCARD_IOCTL_INTRODUCEREADERGROUPA call.

3.2.5.3.14 Processing IntroduceReaderGroup (ASCII) Reply

The OutputBuffer MUST be decoded as Long_Return, as specified in [MS-RPCE] section 2.2.6.

3.2.5.3.15 Sending IntroduceReaderGroup (Unicode) Message

IoControlCode MUST be set to SCARD_IOCTL_INTRODUCEREADERGROUPW.

ContextAndStringW_Call MUST be initialized, as specified in section 2.2.2.6, for a SCARD_IOCTL_INTRODUCEREADERGROUPW call.

3.2.5.3.16 Processing IntroduceReaderGroup (Unicode) Reply

The OutputBuffer MUST be decoded as Long_Return, as specified in [MS-RPCE] section 2.2.6.

3.2.5.3.17 Sending ForgetReaderGroup (ASCII) Message 1

IoControlCode MUST be set to SCARD_IOCTL_FORGETREADERGROUPA.

ContextAndStringA_Call MUST be initialized, as specified in section 2.2.2.5, for a SCARD_IOCTL_FORGETREADERGROUPA call.

3.2.5.3.18 Processing ForgetReaderGroup (ASCII) Reply

The OutputBuffer MUST be decoded as Long_Return, as specified in [MS-RPCE] section 2.2.6.

3.2.5.3.19 Sending ForgetReaderGroup (ASCII) Message 2

IoControlCode MUST be set to SCARD_IOCTL_FORGETREADERGROUPW.

ContextAndStringW_Call MUST be initialized, as specified in section 2.2.2.6, for a SCARD_IOCTL_FORGETREADERGROUPW call.

3.2.5.3.20 Processing ForgetReaderGroup (Unicode) Reply

The OutputBuffer MUST be decoded as Long_Return, as specified in [MS-RPCE] section 2.2.6.

3.2.5.3.21 Sending AddReaderToGroup (ASCII) Message

IoControlCode MUST be set to SCARD_IOCTL_ADDREADERTOGROUPA.

ContextAndTwoStringA_Call MUST be initialized, as specified in section 2.2.2.7, for a SCARD_IOCTL_ADDREADERTOGROUPA call.

3.2.5.3.22 Processing AddReaderToGroup (ASCII) Reply

The OutputBuffer MUST be decoded as Long_Return, as specified in [MS-RPCE] section 2.2.6.

3.2.5.3.23 Sending AddReaderToGroup (Unicode) Message

IoControlCode MUST be set to SCARD_IOCTL_ADDREADERTOGROUPW.

ContextAndTwoStringW_Call MUST be initialized, as specified in section 2.2.2.8, for a SCARD_IOCTL_ADDREADERTOGROUPW call.

3.2.5.3.24 Processing AddReaderToGroup (Unicode) Reply

The OutputBuffer MUST be decoded as Long_Return, as specified in [MS-RPCE] section 2.2.6.

3.2.5.3.25 Sending RemoveReaderFromGroup (ASCII) Message

IoControlCode MUST be set to SCARD_IOCTL_REMOVEREADERFROMGROUPA.

ContextAndTwoStringA_Call MUST be initialized, as specified in section 2.2.2.7, for a SCARD_IOCTL_REMOVEREADERFROMGROUPA call.

3.2.5.3.26 Processing RemoveReaderFromGroup (ASCII) Reply

The OutputBuffer MUST be decoded as Long_Return, as specified in [MS-RPCE] section 2.2.6.

3.2.5.3.27 Sending RemoveReaderFromGroup (Unicode) Message

IoControlCode MUST be set to SCARD_IOCTL_REMOVEREADERFROMGROUPW.

ContextAndTwoStringW_Call MUST be initialized, as specified in section 2.2.2.8, for a SCARD_IOCTL_REMOVEREADERFROMGROUPW call.

3.2.5.3.28 Processing RemoveReaderFromGroup (Unicode) Reply

The OutputBuffer MUST be decoded as Long_Return, as specified in [MS-RPCE] section 2.2.6.

3.2.5.3.29 Sending ListReaderGroups (ASCII) Message

IoControlCode MUST be set to SCARD_IOCTL_LISTREADERGROUPSA.

ListReaderGroups_Call MUST be initialized, as specified in section 2.2.2.3.

3.2.5.3.30 Processing ListReaderGroups (ASCII) Reply

The OutputBuffer MUST be decoded as ListReaderGroups_Return, as specified in [MS-RPCE] section 2.2.6.

3.2.5.3.31 Sending ListReaderGroups (Unicode) Message

IoControlCode MUST be set to SCARD_IOCTL_LISTREADERGROUPSW.

ListReaderGroups_Call MUST be initialized, as specified in section 2.2.2.3.

3.2.5.3.32 Processing ListReaderGroups (Unicode) Reply

The OutputBuffer MUST be decoded as ListReaderGroups_Return, as specified in [MS-RPCE] section 2.2.6.

3.2.5.3.33 Sending ListReaders (ASCII) Message

IoControlCode MUST be set to SCARD_IOCTL_LISTREADERSA.

ListReaders_Call MUST be initialized, as specified in section 2.2.2.4, for an ASCII call.

3.2.5.3.34 Processing ListReadersReply (ASCII) Reply

The OutputBuffer MUST be decoded as ListReaders_Return, as specified in [MS-RPCE] section 2.2.6.

3.2.5.3.35 Sending ListReaders (Unicode) Message

IoControlCode MUST be set to SCARD_IOCTL_LISTREADERSW.

ListReaders_Call MUST be initialized, as specified in section 2.2.2.4, for an Unicode call.

3.2.5.3.36 Processing ListReadersReply (Unicode) Reply

The OutputBuffer MUST be decoded as ListReaders_Return, as specified in [MS-RPCE] section 2.2.6.

3.2.5.3.37 Sending LocateCards (ASCII) Message

IoControlCode MUST be set to SCARD_IOCTL_LOCATECARDSA.

LocateCardsA_Call MUST be initialized as specified in section 2.2.2.9.

3.2.5.3.38 Processing LocateCards (ASCII) Reply

The OutputBuffer MUST be decoded as LocateCards_Return, as specified in [MS-RPCE] section 2.2.6.

3.2.5.3.39 Sending LocateCards (Unicode) Message

IoControlCode MUST be set to SCARD_IOCTL_LOCATECARDSW.

LocateCardsW_Call MUST be initialized, as specified in section 2.2.2.10.

3.2.5.3.40 Processing LocateCards (Unicode) Reply

The OutputBuffer MUST be decoded as LocateCards_Return, as specified in [MS-RPCE] section 2.2.6.

3.2.5.3.41 Sending GetStatusChange (ASCII) Message

IoControlCode MUST be set to SCARD_IOCTL_GETSTATUSCHANGEA.

GetStatusChangeA_Call MUST be initialized, as specified in section 2.2.2.11.

3.2.5.3.42 Processing GetStatusChange (ASCII) Reply

The OutputBuffer MUST be decoded as GetStatusChange_Return, as specified in [MS-RPCE] section 2.2.6.

3.2.5.3.43 Sending GetStatusChange (Unicode) Message

IoControlCode MUST be set to SCARD_IOCTL_GETSTATUSCHANGEW.

GetStatusChangeW_Call MUST be initialized, as specified in section 2.2.2.12.

3.2.5.3.44 Processing GetStatusChange (Unicode) Reply

The OutputBuffer MUST be decoded as GetStatusChange_Return, as specified in [MS-RPCE] section 2.2.6.

3.2.5.3.45 Sending Cancel Message

IoControlCode MUST be set to SCARD_IOCTL_CANCEL.

Context_Call.Context MUST be initialized, as specified in section 2.2.2.2.

3.2.5.3.46 Processing Cancel Reply

The OutputBuffer MUST be decoded as Long_Return, as specified in [MS-RPCE] section 2.2.6.

3.2.5.3.47 Sending Connect (ASCII) Message

IoControlCode MUST be set to SCARD_IOCTL_CONNECTA.

ConnectA_Call MUST be initialized, as specified in section 2.2.2.13.

3.2.5.3.48 Processing Connect (ASCII) Reply

The OutputBuffer MUST be decoded as Connect_Return, as specified in [MS-RPCE] section 2.2.6.

3.2.5.3.49 Sending Connect (Unicode) Message

IoControlCode MUST be set to SCARD_IOCTL_CONNECTW.

ConnectW_Call MUST be initialized, as specified in section 2.2.2.14.

3.2.5.3.50 Processing Connect (Unicode) Reply

The OutputBuffer MUST be decoded as Connect_Return, as specified in [MS-RPCE] section 2.2.6.

3.2.5.3.51 Sending Reconnect Message

IoControlCode MUST be set to SCARD_IOCTL_RECONNECT.

Reconnect_Call MUST be initialized, as specified in section 2.2.2.15.

3.2.5.3.52 Processing Reconnect Reply

The OutputBuffer MUST be decoded as Reconnect_Return, as specified in [MS-RPCE] section 2.2.6.

3.2.5.3.53 Sending Disconnect Message

IoControlCode MUST be set to SCARD_IOCTL_DISCONNECT.

HCardAndDisposition_Call MUST be initialized, as specified in section 2.2.2.16, for a SCARD_IOCTL_DISCONNECT call.

3.2.5.3.54 Processing Disconnect Reply

The OutputBuffer MUST be decoded as Long_Return, as specified in [MS-RPCE] section 2.2.6.

3.2.5.3.55 Sending Status (ASCII) Message

IoControlCode MUST be set to SCARD_IOCTL_STATUSA.

Status_Call MUST be initialized, as specified in section 2.2.2.18.

3.2.5.3.56 Processing Status (ASCII) Reply

The OutputBuffer MUST be decoded as Status_Return, as specified in [MS-RPCE] section 2.2.6, and interpreted as a SCARD_IOCTL_STATUSA return.

3.2.5.3.57 Sending Status (Unicode) Message

IoControlCode MUST be set to SCARD_IOCTL_STATUSW.

Status_Call MUST be initialized, as specified in section 2.2.2.18 .

3.2.5.3.58 Processing Status (Unicode) Reply

The OutputBuffer MUST be decoded as Status_Return, as specified in [MS-RPCE] section 2.2.6, and interpreted as a SCARD_IOCTL_STATUSW return.

3.2.5.3.59 Sending State Message

IoControlCode MUST be set to SCARD_IOCTL_STATE.

State_Call MUST be initialized, as specified in section 2.2.2.17, for a SCARD_IOCTL_STATE call.

3.2.5.3.60 Processing State Message Reply

The OutputBuffer MUST be decoded as State_Return, as specified in [MS-RPCE] section 2.2.6, and interpreted as a SCARD_IOCTL_STATE return.

3.2.5.3.61 Sending BeginTransaction Message

IoControlCode MUST be set to SCARD_IOCTL_BEGINTRANSACTION.

HCardAndDisposition_Call MUST be initialized, as specified in section 2.2.2.16, for a SCARD_IOCTL_BEGINTRANSACTION call.

3.2.5.3.62 Processing BeginTransaction Reply

The OutputBuffer MUST be decoded as Long_Return, as specified in [MS-RPCE] section 2.2.6.

3.2.5.3.63 Sending EndTransaction Message

IoControlCode MUST be set to SCARD_IOCTL_ENDTRANSACTION.

HCardAndDisposition_Call MUST be initialized, as specified in section 2.2.2.16, for a SCARD_IOCTL_ENDTRANSACTION call.

3.2.5.3.64 Processing EndTransaction Reply

The OutputBuffer MUST be decoded as Long_Return, as specified in [MS-RPCE] section 2.2.6.

3.2.5.3.65 Sending Transmit Message

IoControlCode MUST be set to SCARD_IOCTL_TRANSMIT.

Transmit_Call MUST be initialized as specified in section 2.2.2.19.

3.2.5.3.66 Processing Transmit Reply

The OutputBuffer MUST be decoded as Transmit_Return, as specified in [MS-RPCE] section 2.2.6.

3.2.5.3.67 Sending Control Message

IoControlCode MUST be set to SCARD_IOCTL_CONTROL.

Control_Call MUST be initialized as specified in section 2.2.2.20.

3.2.5.3.68 Processing Control Reply

The OutputBuffer MUST be decoded as Control_Return, as specified in [MS-RPCE] section 2.2.6.

3.2.5.3.69 Sending GetReaderCapabilities Message

IoControlCode MUST be set to SCARD_IOCTL_GETATTRIB.

GetAttrib_Call MUST be initialized as specified in section 2.2.2.21.

3.2.5.3.70 Processing GetReaderCapabilities Reply

The OutputBuffer MUST be decoded as GetAttrib_Return, as specified in [MS-RPCE] section 2.2.6.

3.2.5.3.71 Sending SetReaderCapabilities Message

IoControlCode MUST be set to SCARD_IOCTL_SETATTRIB.

SetAttrib_Call MUST be initialized as specified in section 2.2.2.22.

3.2.5.3.72 Processing SetReaderCapabilities Reply

The OutputBuffer MUST be decoded as Long_Return, as specified in [MS-RPCE] section 2.2.6.

3.2.5.3.73 Sending WaitForResourceManager Message

IoControlCode MUST be set to SCARD_IOCTL_ACCESSSTARTEDEVENT.

ScardAccessStartedEvent_Call MUST be initialized as specified in section 2.2.2.30. This structure MUST NOT be encoded and MUST be sent as is.

3.2.5.3.74 Processing WaitForResourceManager Reply

The OutputBuffer MUST be decoded as Long_Return, as specified in [MS-RPCE] section 2.2.6.

3.2.5.3.75 Sending LocateCardsByATR (ASCII) Message

IoControlCode MUST be set to SCARD_IOCTL_LOCATECARDSBYATRA.

LocateCardsByATRA_Call MUST be initialized as specified in section 2.2.2.23.

3.2.5.3.76 Processing LocateCardsByATR (Unicode) Reply

The OutputBuffer MUST be decoded as LocateCards_Return, as specified in [MS-RPCE] section 2.2.6.

3.2.5.3.77 Processing LocateCardsByATR (ASCII) Reply

The OutputBuffer MUST be decoded as LocateCards_Return, as specified in [MS-RPCE] section 2.2.6.

3.2.5.3.78 Sending LocateCardsByATR (Unicode) Message

IoControlCode MUST be set to SCARD_IOCTL_LOCATECARDSBYATRW.

LocateCardsByATRW_Call MUST be initialized as specified in section 2.2.2.24.

3.2.5.3.79 Sending ReadCache (ASCII) Message

IoControlCode MUST be set to SCARD_IOCTL_READCACHEA.

ReadCacheA_Call MUST be initialized as specified in section 2.2.2.25.

3.2.5.3.80 Processing ReadCache (ASCII) Reply

The OutputBuffer MUST be decoded as ReadCache_Return, as specified in [MS-RPCE] section 2.2.6.

3.2.5.3.81 Sending ReadCache (Unicode) Message

IoControlCode MUST be set to SCARD_IOCTL_READCACHEW.

ReadCacheW_Call MUST be initialized as specified in section 2.2.2.26.

3.2.5.3.82 Processing ReadCache (Unicode) Reply

The OutputBuffer MUST be decoded as ReadCache_Return, as specified in [MS-RPCE] section 2.2.6.

3.2.5.3.83 Sending WriteCache (ASCII) Message

IoControlCode MUST be set to SCARD_IOCTL_WRITECACHEA.

WriteCacheA_Call MUST be initialized as specified in section 2.2.2.27.

3.2.5.3.84 Processing WriteCache (ASCII) Reply

The OutputBuffer MUST be decoded as Long_Return, as specified in [MS-RPCE] section 2.2.6.

3.2.5.3.85 Sending WriteCache (Unicode) Message

IoControlCode MUST be set to SCARD_IOCTL_WRITECACHEW.

WriteCacheW_Call MUST be initialized as specified in section 2.2.2.28.

3.2.5.3.86 Processing WriteCache (Unicode) Reply

The OutputBuffer MUST be decoded as Long_Return, as specified in [MS-RPCE] section 2.2.6.

3.2.5.3.87 Sending GetTransmitCount Message

IoControlCode MUST be set to SCARD_IOCTL_GETTRANSMITCOUNT.

GetTransmitCount_Call MUST be initialized as specified in section 2.2.2.29.

3.2.5.3.88 Processing GetTransmitCount Reply

The OutputBuffer MUST be decoded as GetTransmitCount_Return, as specified in [MS-RPCE] section 2.2.6.

3.2.5.3.89 Sending GetReaderIcon Message

IoControlCode MUST be set to SCARD_IOCTL_GETREADERICON.

GetReaderIcon_Call MUST be initialized as specified in section 2.2.2.31.

3.2.5.3.90 Processing GetReaderIcon Reply

The **OutputBuffer** MUST be decoded as **GetReaderIcon_Return**, as specified in section 2.2.3.14.

3.2.5.3.91 Sending GetDeviceTypeId Message

IoControlCode MUST be set to SCARD_IOCTL_GETDEVICETYPEID.

GetDeviceTypeId_Call MUST be initialized as specified in section 2.2.2.32.

3.2.5.3.92 Processing GetDeviceTypeId Reply

The **OutputBuffer** MUST be decoded as **GetDeviceTypeId_Return**, as specified in section 2.2.3.15.

3.2.6 Timer Events

None.

3.2.7 Other Local Events

None.

4 Protocol Examples

This example shows the messages sent to perform a simple querying of a card in the TS client machine. It assumes that a channel has already been set up on the between the TS client and the TS server. In addition, a PC/SC-compatible resource manager is running on the TS client and there exists a smart card reader with a smart card inserted. The following figure represents the program flow.

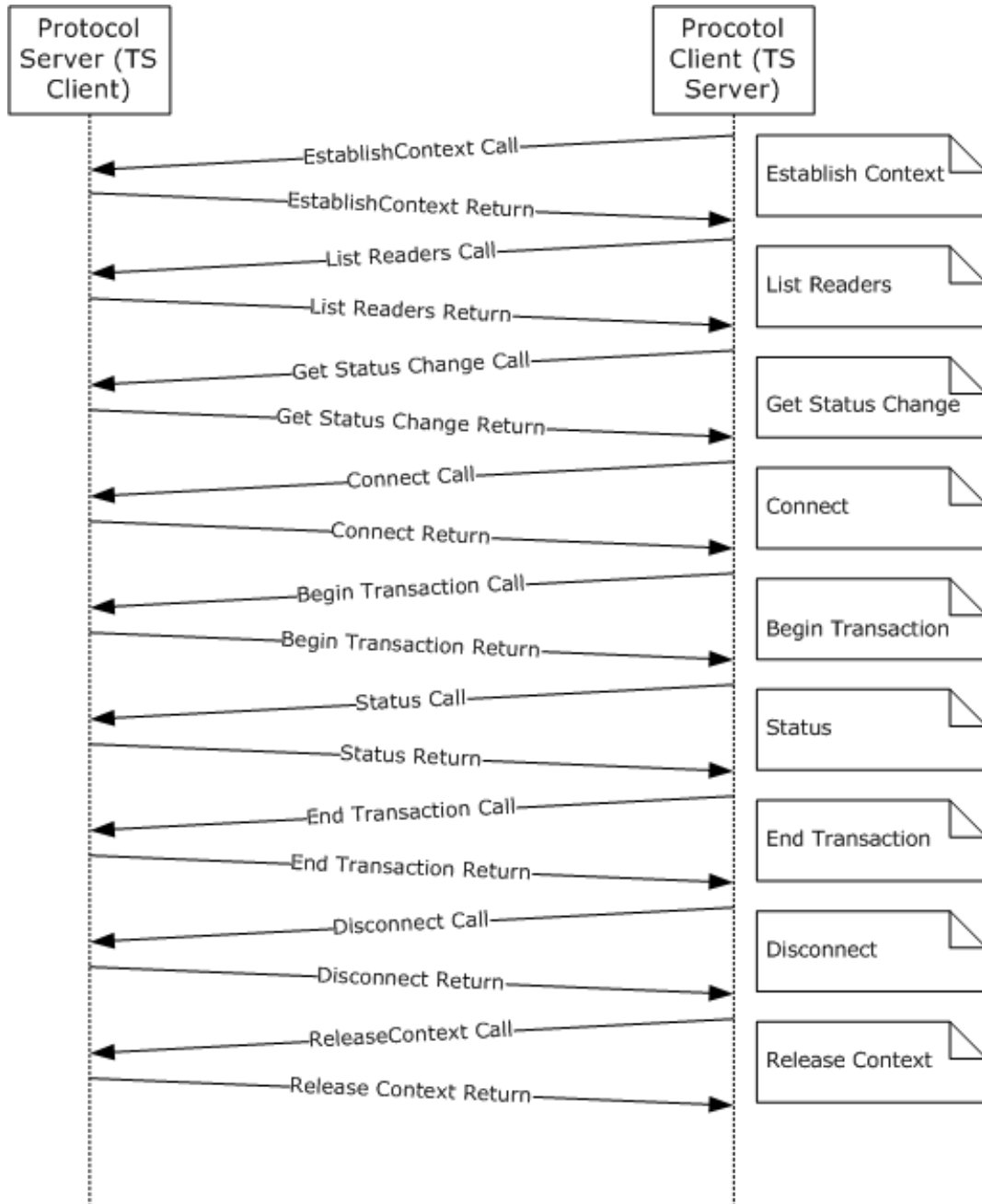


Figure 4: Protocol flow

This representation of the protocol flow is simplified in that there is only one application sending data over this protocol. In an actual implementation there could be multiple outstanding calls at any time.

All packets are constructed as specified in sections 3.2.5 and 3.2.5.3. The Status field refers to the **IoStatus** field as specified in [MS-RDPEFS] section 2.2.1.5. The **CompletionId** field is also specified in [MS-RDPEFS] section 2.2.1.5.

4.1 Establish Context Call

```
IoControlCode= SCARD_IOCTL_ESTABLISHCONTEXT
CompletionId = 0
EstablishContext_Call {
  dwScope = SCARD_SCOPE_SYSTEM
}
```

The **CompletionId** field is specified in [MS-RDPEFS] section 2.2.1.4.

4.2 Establish Context Return

```
CompletionId = 0
Status = 0
EstablishContext_Return {
  ReturnCode = 0
  Context = {cbContext = 4, pbContext = {0x00,0x00,0x01,0xcd} }
}
```

The **Status** field is specified as the **IoStatus** field in [MS-RDPEFS] section 2.2.1.5.

4.3 List Readers Call

```
IoControlCode = SCARD_IOCTL_LISTREADERSW
CompletionId = 0
ListReaders_Call {
  Context = {cbContext = 4, pbContext = {0x00,0x00,0x01,0xcd} }
  cBytes = 44
  mszGroups = L"SCard$DefaultReaders\0\0"
  fmszReadersIsNULL = 0
  cchReaders = 0xFFFFFFFF
}
```

4.4 List Readers Return

```
CompletionId = 0
Status = 0
ListReaders_Return {
  ReturnCode = 0
  cReaders = 66
  msz = L"Gemplus USB Smart Card Reader 0\0\0"
}
```

4.5 Get Status Change Call

```
IoControlCode = SCARD_IOCTL_GETSTATUSCHANGEW
CompletionId = 0
GetStatusChangeW_Call {
  Context = {cbContext = 4, pbContext = {0x00,0x00,0x01,0xcd} }
  dwTimeOut = 0
  cReaders = 1
  rgReaderStates = {
    { szReader = L"Gemplus USB Smart Card Reader 0"
      Common = {
        dwCurrentState = SCARD_STATE_UNAWARE
      }
    }
  }
}
```



```

dwEventState = 0
cbAtr = 0
pbAtr = {0} }
}
}
}

```

4.6 Get Status Change Return

```

Status = 0
CompletionId = 0
GetStatusChange_Return = {
  ReturnCode = 0
  cReaders = 1
  rgReaderStates = {
    dwCurrentState = SCARD_STATE_UNAWARE
    dwEventState = SCARD_STATE_CHANGED |
      SCARD_STATE_PRESENT | SCARD_STATE_INUSE
  }
  cbAtr = 9
  rgbAtr = {0x3b, 0x16, 0x94, 0x41, 0x73, 0x74, 0x72, 0x69,
    0x64}
}
}

```

4.7 Connect Call

```

IoControlCode = SCARD_IOCTL_CONNECTW
CompletionId = 0
ConnectW_Call = {
  szReader = L"Gemplus USB Smart Card Reader 0"
  Common = {
    Context = { cbContext = 4, pbContext = {0x00, 0x00, 0x01, 0xcd} }
    dwShareMode = SCARD_SHARE_SHARED
    dwPreferredProtocols = SCARD_PROTOCOL_T0 | SCARD_PROTOCOL_T1
  }
}
}

```

4.8 Connect Return

```

CompletionId = 0
Status = 0
Connect_Return = {
  ReturnCode = 0
  hCard = {
    Context = { cbContext = 4, pbContext = {0x00, 0x00, 0x01, 0xcd} }
    cbHandle = 4
    pbHandle = {0x00, 0x00, 0x01, 0xea} {0x00, 0x00, 0x01, 0xea}
    dwActiveProtocol = SCARD_PROTOCOL_T0
  }
}

```

4.9 Begin Transaction Call

```

IoControlCode = SCARD_IOCTL_BEGINTRANSACTION
CompletionId = 0
HCardAndDisposition_Call = {
  hCard = {
    Context = { cbContext = 4, pbContext = {0x00, 0x00, 0x01, 0xcd} }
    cbHandle = 4
    pbHandle = {0x00, 0x00, 0x01, 0xea}
    dwDisposition = 0
  }
}

```

4.10 Begin Transaction Return

```
CompletionId = 0
Status = 0
Long_Return = {
ReturnCode = 0
}
```

4.11 Status Call

```
IoControlCode = SCARD_IOCTL_STATUSW
CompletionId = 0
Status_Call = {
hCard = {
Context = { cbContext = 4, pbContext = {0x00,0x00,0x01,0xcd} }
cbHandle = 4
pbHandle = {0x00,0x00,0x01,0xea} }
fmszReaderNamesIsNULL = 0
cchReaderLen = 0xFFFFFFFF
cbAtrLen = 36
}
```

4.12 Status Return

```
CompletionId = 0
IoStatus = 0
Status_Return = {
ReturnCode = 0
cBytes = 66
mszReaderNames = L"Gemplus USB Smart Card Reader 0\0\0"
dwState = SCARD_SPECIFICMODE
dwProtocol = SCARD_PROTOCOL_T0
pbAtr = {0x3b, 0x16, 0x94,0x41, 0x73, 0x74,0x72,0x69,0x64}
cbAtr = 9
}
```

4.13 End Transaction Call

```
IoControlCode = SCARD_IOCTL_ENDTRANSACTION
CompletionId = 0
HCardAndDisposition_Call = {
hCard = {
Context = { cbContext = 4, pbContext = {0x00,0x00,0x01,0xcd} }
cbHandle = 4
pbHandle = {0x00,0x00,0x01,0xea}}
dwDisposition = SCARD_LEAVE_CARD
}
```

4.14 End Transaction Return

```
CompletionId = 0
Status = 0
Long_Return = {
ReturnCode = 0
}
```

4.15 Disconnect Call

```
IoControlCode = SCARD_IOCTL_DISCONNECT
```

```
CompletionId = 0
HCardAndDisposition_Call = {
hCard = {
Context = { cbContext = 4, pbContext = {0x00,0x00,0x01,0xcd} }
cbHandle = 4
pbHandle = {0x00,0x00,0x01,0xea}}
dwDisposition = SCARD_RESET_CARD
}
```

4.16 Disconnect Return

```
CompletionId = 0
Status = 0
Long_Return = {
ReturnCode = 0
}
```

4.17 Release Context Call

```
IoControlCode = SCARD_IOCTL_RELEASECONTEXT
CompletionId = 0
Context_Call = {
Context = {cbContext = 4, pbContext = {0x00,0x00,0x01,0xcd} }
}
```

4.18 Release Context Return

```
CompletionId = 0
Status = 0
Long_Return = {
ReturnCode = 0
}
```

5 Security

This protocol has no security aspects and relies on the underlying transport for any security.

5.1 Security Considerations for Implementers

None.

5.2 Index of Security Parameters

None.

6 Appendix A: Full IDL

For ease of implementation, the full Interface Definition Language (IDL) is provided below where ms-dtyp.idl is the IDL as specified in [MS-DTYP] section 5 and ms-dcom.idl is the IDL as specified in [MS-DCOM] section 6.

```
import "ms-dtyp.idl";
import "ms-dcom.idl";

[
    uuid(A35AF600-9CF4-11CD-A076-08002B2BD711),
    version(1.0),
    pointer_default(unique)
]
interface type_scard_pack
{
    //
    // Packing for calls that use the same params
    //
    typedef struct _REDIR_SCARDCONTEXT
    {
        [range(0, 16)]            unsigned long    cbContext;
        [unique] [size_is(cbContext)] byte        *pbContext;
    } REDIR_SCARDCONTEXT;

    typedef struct _REDIR_SCARDHANDLE
    {
        REDIR_SCARDCONTEXT        Context;
        [range(0, 16)]            unsigned long    cbHandle;
        [size_is(cbHandle)] byte    *pbHandle;
    } REDIR_SCARDHANDLE;

    typedef struct _long_Return
    {
        long                    ReturnCode;
    } long_Return;

    typedef struct _longAndMultiString_Return
    {
        long                    ReturnCode;
        [range(0, 65536)]        unsigned long    cBytes;
        [unique] [size_is(cBytes)] byte        *msz;
    } ListReaderGroups_Return, ListReaders_Return;

    typedef struct _Context_Call
    {
        REDIR_SCARDCONTEXT        Context;
    } Context_Call;

    typedef struct _ContextAndStringA_Call
    {
        REDIR_SCARDCONTEXT        Context;
        [string] const char *        sz;
    } ContextAndStringA_Call;

    typedef struct _ContextAndStringW_Call
    {
        REDIR_SCARDCONTEXT        Context;
        [string] const wchar_t *    sz;
    } ContextAndStringW_Call;

    typedef struct _ContextAndTwoStringA_Call
    {
        REDIR_SCARDCONTEXT        Context;
        [string] const char *        sz1;
    } ContextAndTwoStringA_Call;
}
```

```

        [string] const char *                sz2;
    } ContextAndTwoStringA_Call;

typedef struct _ContextAndTwoStringW_Call
{
        REDIR_SCARDCONTEXT                Context;
        [string] const wchar_t *          sz1;
        [string] const wchar_t *          sz2;
    } ContextAndTwoStringW_Call;

//
// Call specific packing
//
typedef struct _EstablishContext_Call
{
        unsigned long                    dwScope;
    } EstablishContext_Call;

typedef struct _EstablishContext_Return
{
        long                            ReturnCode;
        REDIR_SCARDCONTEXT                Context;
    } EstablishContext_Return;

typedef struct _ListReaderGroups_Call
{
        REDIR_SCARDCONTEXT                Context;
        long                            fmszGroupsIsNULL;
        unsigned long                    cchGroups;
    } ListReaderGroups_Call;

typedef struct _ListReaders_Call
{
        REDIR_SCARDCONTEXT                Context;
        [range(0, 65536)] unsigned long    cBytes;
        [unique] [size_is(cBytes)] const byte *mszGroups;
        long                            fmszReadersIsNULL;
        unsigned long                    cchReaders;
    } ListReaders_Call;

typedef struct _ReaderState_Common_Call
{
        unsigned long                    dwCurrentState;
        unsigned long                    dwEventState;
        [range(0, 36)] unsigned long    cbAtr;
        byte                            rgbAtr[36];
    } ReaderState_Common_Call;

typedef struct _ReaderStateA
{
        [string] const char *            szReader;
        ReaderState_Common_Call         Common;
    } ReaderStateA;

typedef struct _ReaderStateW
{
        [string] const wchar_t *        szReader;
        ReaderState_Common_Call         Common;
    } ReaderStateW;

typedef struct _ReaderState_Return
{
        unsigned long                    dwCurrentState;
        unsigned long                    dwEventState;
        [range(0, 36)] unsigned long    cbAtr;
        byte                            rgbAtr[36];
    } ReaderState_Return;

```

```

typedef struct _GetStatusChangeA_Call
{
    REDIR_SCARDCONTEXT Context;
    unsigned long dwTimeOut;
    [range(0, 11)] unsigned long cReaders;
    [size_is(cReaders)] ReaderStateA *rgReaderStates;
} GetStatusChangeA_Call;

typedef struct _LocateCardsA_Call {
    REDIR_SCARDCONTEXT Context;
    [range(0, 65536)] unsigned long cBytes;
    [size_is(cBytes)] const byte * mszCards;
    [range(0, 10)] unsigned long cReaders;
    [size_is(cReaders)] ReaderStateA * rgReaderStates;
} LocateCardsA_Call;

typedef struct _LocateCardsW_Call
{
    REDIR_SCARDCONTEXT Context;
    [range(0, 65536)] unsigned long cBytes;
    [size_is(cBytes)] const byte *mszCards;
    [range(0, 10)] unsigned long cReaders;
    [size_is(cReaders)] ReaderStateW *rgReaderStates;
} LocateCardsW_Call;

typedef struct _LocateCards_ATRMask
{
    [range(0, 36)] unsigned long cbAtr;
    byte rgbAtr[36];
    byte rgbMask[36];
} LocateCards_ATRMask;

typedef struct _LocateCardsByATRA_Call
{
    REDIR_SCARDCONTEXT Context;
    [range(0, 1000)] unsigned long cAtrs;
    [size_is(cAtrs)] LocateCards_ATRMask *rgAtrMasks;
    [range(0, 10)] unsigned long cReaders;
    [size_is(cReaders)] ReaderStateA *rgReaderStates;
} LocateCardsByATRA_Call;

typedef struct _LocateCardsByATRW_Call
{
    REDIR_SCARDCONTEXT Context;
    [range(0, 1000)] unsigned long cAtrs;
    [size_is(cAtrs)] LocateCards_ATRMask *rgAtrMasks;
    [range(0, 10)] unsigned long cReaders;
    [size_is(cReaders)] ReaderStateW *rgReaderStates;
} LocateCardsByATRW_Call;

typedef struct _GetStatusChange_Return
{
    long ReturnCode;
    [range(0, 10)] unsigned long cReaders;
    [size_is(cReaders)] ReaderState_Return *rgReaderStates;
} LocateCards_Return, GetStatusChange_Return;

typedef struct _GetStatusChangeW_Call
{
    REDIR_SCARDCONTEXT Context;
    unsigned long dwTimeOut;
    [range(0, 11)] unsigned long cReaders;
    [size_is(cReaders)] ReaderStateW *rgReaderStates;
} GetStatusChangeW_Call;

```

```

typedef struct _Connect_Common
{
    REDIR_SCARDCONTEXT          Context;
    unsigned long               dwShareMode;
    unsigned long               dwPreferredProtocols;
} Connect_Common;

typedef struct _ConnectA_Call
{
    [string] const char *      szReader;
    Connect_Common             Common;
} ConnectA_Call;

typedef struct _ConnectW_Call
{
    [string] const wchar_t *   szReader;
    Connect_Common             Common;
} ConnectW_Call;

typedef struct _Connect_Return
{
    long                       ReturnCode;
    REDIR_SCARDHANDLE          hCard;
    unsigned long              dwActiveProtocol;
} Connect_Return;

typedef struct _Reconnect_Call
{
    REDIR_SCARDHANDLE          hCard;
    unsigned long              dwShareMode;
    unsigned long              dwPreferredProtocols;
    unsigned long              dwInitialization;
} Reconnect_Call;

typedef struct Reconnect_Return
{
    long                       ReturnCode;
    unsigned long              dwActiveProtocol;
} Reconnect_Return;

typedef struct _HCardAndDisposition_Call
{
    REDIR_SCARDHANDLE          hCard;
    unsigned long              dwDisposition;
} HCardAndDisposition_Call;

typedef struct _State_Call
{
    REDIR_SCARDHANDLE          hCard;
    long                       fpbAtrIsNULL;
    unsigned long              cbAtrLen;
    // EDITOR'S NOTE: Can be 0xFFFFFFFF
} State_Call;

typedef struct _State_Return
{
    long                       ReturnCode;
    unsigned long              dwState;
    unsigned long              dwProtocol;
    [range(0, 36)]             cbAtrLen;
    [unique] [size_is(cbAtrLen)] byte *rgAtr;
} State_Return;

typedef struct _Status_Call
{
    REDIR_SCARDHANDLE          hCard;
    long                       fmszReaderNamesIsNULL;
}

```



```

        unsigned long          cchReaderLen;
        unsigned long          cbAtrLen;
} Status_Call;
typedef struct _Status_Return
{
        long                   ReturnCode;
        [range(0, 65536)]      unsigned long   cBytes;
        [unique] [size_is(cBytes)] byte         *mszReaderNames;
        unsigned long          dwState;
        unsigned long          dwProtocol;
        byte                   pbAtr[32];
        [range(0, 32)]         unsigned long   cbAtrLen;
} Status_Return;

typedef struct _SCardIO_Request
{
        unsigned long          dwProtocol;
        [range(0, 1024)]       unsigned long   cbExtraBytes;
        [unique] [size_is(cbExtraBytes)] byte   *pbExtraBytes;
} SCardIO_Request;
typedef struct _Transmit_Call
{
        REDIR_SCARDHANDLE      hCard;
        SCardIO_Request         ioSendPci;
        [range(0, 66560)]       unsigned long   cbSendLength;
        [size_is(cbSendLength)] const byte     *pbSendBuffer;
        [unique]                 SCardIO_Request *pioRecvPci;
        long                    fpbRecvBufferIsNULL;
        unsigned long           cbRecvLength;
} Transmit_Call;
typedef struct _Transmit_Return
{
        long                   ReturnCode;
        [unique]                 SCardIO_Request *pioRecvPci;
        [range(0, 66560)]       unsigned long   cbRecvLength;
        [unique] [size_is(cbRecvLength)] byte   *pbRecvBuffer;
} Transmit_Return;

typedef struct _GetTransmitCount_Call
{
        REDIR_SCARDHANDLE      hCard;
} GetTransmitCount_Call;

typedef struct _GetTransmitCount_Return
{
        long                   ReturnCode;
        unsigned long          cTransmitCount;
} GetTransmitCount_Return;

typedef struct _Control_Call
{
        REDIR_SCARDHANDLE      hCard;
        unsigned long          dwControlCode;
        [range(0, 66560)]       unsigned long   cbInBufferSize;
        [unique] [size_is(cbInBufferSize)] const byte *pvInBuffer;
        long                    fpvOutBufferIsNULL;
        unsigned long           cbOutBufferSize;
} Control_Call;

typedef struct _Control_Return
{
        long                   ReturnCode;
        [range(0, 66560)]       unsigned long   cbOutBufferSize;
        [unique] [size_is(cbOutBufferSize)] byte *pvOutBuffer;
} Control_Return;

typedef struct _GetAttrib_Call
{
        REDIR_SCARDHANDLE      hCard;

```

```

        unsigned long          dwAttrId;
        long                fpbAttrIsNULL;
        unsigned long        cbAttrLen;
    } GetAttrib_Call;

typedef struct _GetAttrib_Return
{
    [range(0, 65536)]          long          ReturnCode;
    [unique] [size_is(cbAttrLen)] unsigned long cbAttrLen;
    [size_is(cbAttrLen)] byte    *pbAttr;
} GetAttrib_Return;

typedef struct _SetAttrib_Call
{
    REDIR_SCARDHANDLE        hCard;
    unsigned long            dwAttrId;
    [range(0, 65536)]        unsigned long cbAttrLen;
    [size_is(cbAttrLen)]    const byte    *pbAttr;
} SetAttrib_Call;

typedef struct _ReadCache_Common
{
    REDIR_SCARDCONTEXT        Context;
    UUID                      *CardIdentifier;
    unsigned long             FreshnessCounter;
    long                      fpbDataIsNULL;
    unsigned long             cbDataLen;
} ReadCache_Common;

typedef struct _ReadCacheA_Call
{
    [string] char *           szLookupName;
    ReadCache_Common          Common;
} ReadCacheA_Call;

typedef struct _ReadCacheW_Call
{
    [string] wchar_t *       szLookupName;
    ReadCache_Common          Common;
} ReadCacheW_Call;

typedef struct _ReadCache_Return
{
    [range(0, 65536)]          long          ReturnCode;
    [unique] [size_is(cbDataLen)] unsigned long cbDataLen;
    [size_is(cbDataLen)] byte    *pbData;
} ReadCache_Return;

typedef struct _WriteCache_Common
{
    REDIR_SCARDCONTEXT        Context;
    UUID                      *CardIdentifier;
    unsigned long             FreshnessCounter;
    [range(0, 65536)]        unsigned long cbDataLen;
    [unique] [size_is(cbDataLen)] byte    *pbData;
} WriteCache_Common;

typedef struct _WriteCacheA_Call
{
    [string] char *           szLookupName;
    WriteCache_Common          Common;
} WriteCacheA_Call;

typedef struct _WriteCacheW_Call
{
    [string] wchar_t *       szLookupName;
    WriteCache_Common          Common;
} WriteCacheW_Call;
}

```

7 Appendix B: Product Behavior

The information in this specification is applicable to the following Microsoft products or supplemental software. References to product versions include ~~released service packs~~updates to those products.

- Windows XP operating system
- Windows Server 2003 operating system
- Windows Vista operating system
- Windows Server 2008 operating system
- Windows 7 operating system
- Windows Server 2008 R2 operating system
- Windows 8 operating system
- Windows Server 2012 operating system
- Windows 8.1 operating system
- Windows Server 2012 R2 operating system
- Windows 10 operating system
- Windows Server 2016 operating system
- Windows Server operating system

Exceptions, if any, are noted ~~below in this section~~. If ~~a an update version~~, service pack or ~~Quick Fix Engineering (QFE)~~Knowledge Base (KB) number appears with ~~the~~ product ~~version, name, the~~ behavior changed in that ~~service pack or QFE update~~. The new behavior also applies to subsequent ~~service packs of the product~~updates unless otherwise specified. If a product edition appears with the product version, behavior is different in that product edition.

Unless otherwise specified, any statement of optional behavior in this specification that is prescribed using the terms "SHOULD" or "SHOULD NOT" implies product behavior in accordance with the SHOULD or SHOULD NOT prescription. Unless otherwise specified, the term "MAY" implies that the product does not follow the prescription.

<1> Section 1.7: The Windows XP and Windows Server 2003 versions always use SCREDIR_VERSION_XP. Windows Vista and Windows Server 2008 are always SCREDIR_VERSION_LONGHORN. All other versions use SCREDIR_VERSION_WINDOWS_8.

<2> Section 3.1.4: Windows XP and Windows Server 2003 implement function numbers 5 through 58. Windows Vista, Windows Server 2008, Windows 7, and Windows Server 2008 R2 implement function numbers 5 through 64. All other versions implement 5 through 66.

8 Change Tracking

This section identifies changes that were made to this document since the last release. Changes are classified as Major, Minor, or None.

The revision class **Major** means that the technical content in the document was significantly revised. Major changes affect protocol interoperability or implementation. Examples of major changes are:

- A document revision that incorporates changes to interoperability requirements.
- A document revision that captures changes to protocol functionality.

The revision class **Minor** means that the meaning of the technical content was clarified. Minor changes do not affect protocol interoperability or implementation. Examples of minor changes are updates to clarify ambiguity at the sentence, paragraph, or table level.

The revision class **None** means that no new technical changes were introduced. Minor editorial and formatting changes may have been made, but the relevant technical content is identical to the last released version.

The changes made to this document are listed in the following table. For more information, please contact dohelp@microsoft.com.

Section	Description	Revision class
1.7 Versioning and Capability Negotiation	6814 : Added the dialect SCREDIR_VERSION_WINDOWS_8 to the protocol versions and the behavior note along with the build numbers for SCREDIR_VERSION_XP, SCREDIR_VERSION_LONGHORN, and SCREDIR_VERSION_WINDOWS_8.	major
3.1.4 Message Processing Events and Sequencing Rules Appendix B: Product Behavior	6814 : Updated the function number for SCARD_IOCTL_RELEASETARTEDEVENT_IOCTL to 57; and updated the behavior note to include Windows 7 and Windows Server 2008 R2. Added Windows Server operating system to the list of applicable products.	majorMajor

9 Index

A

- Abstract data model
 - client 61
 - server 48
- Access_Mode_Flags packet 42
- Applicability 15

B

- Begin transaction call example 73
- Begin transaction return example 74

C

- Capability negotiation 15
- Card_Reader_State packet 40
- Change tracking 84
- Client
 - abstract data model 61
 - higher-layer triggered events 61
 - initialization 61
 - local events 70
 - message processing 61
 - Processing Incoming Replies method 61
 - Sending Outgoing Messages method 61
 - sequencing rules 61
 - structures (section 2.2.1 17, section 2.2.3 35)
 - timer events 70
 - timers 61
- Common data types 17
- Connect call example 73
- Connect return example 73
- Connect_Common structure 18
- Connect_Return structure 37
- ConnectA_Call structure 27
- ConnectW_Call structure 27
- Context_Call structure 21
- ContextAndStringA_Call structure 23
- ContextAndStringW_Call structure 23
- ContextAndTwoStringA_Call structure 24
- ContextAndTwoStringW_Call structure 25
- Control_Call structure 30
- Control_Return structure 37

D

- Data model - abstract
 - client 61
 - server 48
- Data types 17
 - common - overview 17
- Disconnect call example 74
- Disconnect return example 75

E

- End transaction call example 74
- End transaction return example 74
- Establish context call example 72
- Establish context return example 72

EstablishContext_Call structure 21
EstablishContext_Return structure 35
Events
 local - client 70
 local - server 60
 timer - client 70
 timer - server 60
Examples
 begin transaction call 73
 begin transaction call example 73
 begin transaction return 74
 begin transaction return example 74
 connect call 73
 connect call example 73
 connect return 73
 connect return example 73
 disconnect call 74
 disconnect call example 74
 disconnect return 75
 disconnect return example 75
 end transaction call 74
 end transaction call example 74
 end transaction return 74
 end transaction return example 74
 establish context call 72
 establish context call example 72
 establish context return 72
 establish context return example 72
 get status change call 72
 get status change call example 72
 get status change return 73
 get status change return example 73
 list reader call example 72
 list reader return example 72
 list readers call 72
 list readers return 72
 overview 71
 release context call 75
 release context call example 75
 release context return 75
 release context return example 75
 status call 74
 status call example 74
 status return 74
 status return example 74

F

Fields - vendor-extensible 15
Full IDL 77

G

Get status change call example 72
Get status change return example 73
GetAttrib_Call structure 31
GetAttrib_Return structure 39
GetDeviceTypeId_Call structure 35
GetDeviceTypeId_Return structure 40
GetReaderIcon_Call structure 34
GetReaderIcon_Return structure 40
GetStatusChange_Return 36
GetStatusChangeA_Call structure 26
GetStatusChangeW_Call structure 26
GetTransmitCount_Call structure 34

GetTransmitCount_Return structure 40
Glossary 9

H

HCardAndDisposition_Call structure 28
Higher-layer triggered events - client 61

I

IDL 77
Implementer - security considerations 76
Implementers - security considerations 76
Index of security parameters 76
Informative references 12
Initialization
 client 61
 server 48
Introduction 9

L

List reader call example 72
List reader return example 72
List readers call example 72
List readers return example 72
ListReaderGroups_Call structure 22
ListReaderGroups_Return structure 36
ListReaders_Call structure 22
ListReaders_Return 36
Local events
 client 70
 server 60
LocateCards_ATRMask structure 18
LocateCards_Return structure 36
LocateCardsA_Call structure 25
LocateCardsByATRA_Call structure 32
LocateCardsByATRW_Call structure 33
LocateCardsW_Call structure 26
Long_Return structure 36

M

Message processing
 client 61
 server 48
Messages
 common data types 17
 names 62
 overview 17
 processing incoming replies 61
 sending outgoing messages 61
 transport 17
Methods
 Processing Incoming Replies 61
 SCARD_IOCTL_ACCESSSTARTEDEVENT (IOCTL 0x000900E0) 52
 SCARD_IOCTL_ADDREADERTOGROUPA (IOCTL 0x00090070) 55
 SCARD_IOCTL_ADDREADERTOGROUPW (IOCTL 0x00090074) 55
 SCARD_IOCTL_BEGINTRANSACTION (IOCTL 0x000900BC) 57
 SCARD_IOCTL_CANCEL (IOCTL 0x000900A8) 57
 SCARD_IOCTL_CONNECTA (IOCTL 0x000900AC) 57
 SCARD_IOCTL_CONNECTW (IOCTL 0x000900B0) 57
 SCARD_IOCTL_CONTROL (IOCTL 0x000900D4) 58
 SCARD_IOCTL_DISCONNECT (IOCTL 0x000900B8) 57
 SCARD_IOCTL_ENDTRANSACTION (IOCTL 0x000900C0) 57

SCARD_IOCTL_ESTABLISHCONTEXT (IOCTL 0x00090014) 52
SCARD_IOCTL_FORGETREADER (IOCTL 0x00090068) 54
SCARD_IOCTL_FORGETREADERGROUPA (IOCTL 0x00090058) 54
SCARD_IOCTL_FORGETREADERGROUPW (IOCTL 0x0009005C) 54
SCARD_IOCTL_FORGETREADERW (IOCTL 0x0009006C) 55
SCARD_IOCTL_GETATTRIB (IOCTL 0x000900D8) 58
SCARD_IOCTL_GETDEVICETYPEID (IOCTL 0x00090108) 60
SCARD_IOCTL_GETREADERICON (IOCTL 0x00090104) 60
SCARD_IOCTL_GETSTATUSCHANGEA (IOCTL 0x000900A0) 56
SCARD_IOCTL_GETSTATUSCHANGEW (IOCTL 0x000900A4) 56
SCARD_IOCTL_GETTRANSMITCOUNT (IOCTL 0x00090100) 59
SCARD_IOCTL_INTRODUCEREADER (IOCTL 0x00090060) 54
SCARD_IOCTL_INTRODUCEREADERGROUPA (IOCTL 0x00090050) 53
SCARD_IOCTL_INTRODUCEREADERGROUPW (IOCTL 0x00090054) 54
SCARD_IOCTL_INTRODUCEREADERW (IOCTL 0x00090064) 54
SCARD_IOCTL_ISVALIDCONTEXT (IOCTL 0x0009001C) 52
SCARD_IOCTL_LISTREADERGROUPSA (IOCTL 0x00090020) 53
SCARD_IOCTL_LISTREADERGROUPSW (IOCTL 0x00090024) 53
SCARD_IOCTL_LISTREADERSA (IOCTL 0x00090028) 53
SCARD_IOCTL_LISTREADERSW (IOCTL 0x0009002C) 53
SCARD_IOCTL_LOCATECARDSA (IOCTL 0x00090098) 55
SCARD_IOCTL_LOCATECARDSBYATRA (IOCTL 0x000900E8) 56
SCARD_IOCTL_LOCATECARDSBYATR (IOCTL 0x000900EC) 56
SCARD_IOCTL_LOCATECARDSW (IOCTL 0x0009009C) 56
SCARD_IOCTL_READCACHEA (IOCTL 0x000900F0) 59
SCARD_IOCTL_READCACHEW (IOCTL 0x000900F4) 59
SCARD_IOCTL_RECONNECT (IOCTL 0x000900B4) 58
SCARD_IOCTL_RELEASECONTEXT (IOCTL 0x00090018) 52
SCARD_IOCTL_RELEASESTARTEVENT 60
SCARD_IOCTL_REMOVEREADERFROMGROUPA (IOCTL 0x00090078) 55
SCARD_IOCTL_REMOVEREADERFROMGROUPW (IOCTL 0x0009007C) 55
SCARD_IOCTL_SETATTRIB (IOCTL 0x000900DC) 59
SCARD_IOCTL_STATE (IOCTL 0x000900C4) 59
SCARD_IOCTL_STATUSA (IOCTL 0x000900C8) 58
SCARD_IOCTL_STATUSW (IOCTL 0x000900CC) 58
SCARD_IOCTL_TRANSMIT (IOCTL 0x000900D0) 58
SCARD_IOCTL_WRITECACHEA (IOCTL 0x000900F8) 60
SCARD_IOCTL_WRITECACHEW (IOCTL 0x000900FC) 60
Sending Outgoing Messages 61

N

Normative references 11

O

Outgoing messages - sending 61
Overview (synopsis) 12

P

Parameters - security 76
Parameters - security index 76
Preconditions 14
Prerequisites 14
Processing Incoming Replies method 61
Product behavior 83
Protocol Details
 overview 48
Protocol_Identifier packet 41

R

ReadCache_Common structure 20
ReadCache_Return structure 35

ReadCacheA_Call structure 33
ReadCacheW_Call structure 33
Reader_State packet 42
ReaderState_Common_Call structure 18
ReaderState_Return structure 20
ReaderStateA structure 19
ReaderStateW structure 19
Reconnect_Call structure 27
Reconnect_Return structure 37
REDIR_SCARDCONTEXT structure 17
REDIR_SCARDHANDLE structure 17
References 11
 informative 12
 normative 11
Relationship to other protocols 14
Release context call example 75
Release context return example 75
Replies - processing 61
Return_Code packet 44

S

SCARD_IOCTL_ACCESSSTARTEDEVENT (IOCTL 0x000900E0) method 52
SCARD_IOCTL_ADDREADERTOGROUPA (IOCTL 0x00090070) method 55
SCARD_IOCTL_ADDREADERTOGROUPW (IOCTL 0x00090074) method 55
SCARD_IOCTL_BEGINTRANSACTION (IOCTL 0x000900BC) method 57
SCARD_IOCTL_CANCEL (IOCTL 0x000900A8) method 57
SCARD_IOCTL_CONNECTA (IOCTL 0x000900AC) method 57
SCARD_IOCTL_CONNECTW (IOCTL 0x000900B0) method 57
SCARD_IOCTL_CONTROL (IOCTL 0x000900D4) method 58
SCARD_IOCTL_DISCONNECT (IOCTL 0x000900B8) method 57
SCARD_IOCTL_ENDTRANSACTION (IOCTL 0x000900C0) method 57
SCARD_IOCTL_ESTABLISHCONTEXT (IOCTL 0x00090014) method 52
SCARD_IOCTL_FORGETREADER (IOCTL 0x00090068) method 54
SCARD_IOCTL_FORGETREADERGROUPA (IOCTL 0x00090058) method 54
SCARD_IOCTL_FORGETREADERGROUPW (IOCTL 0x0009005C) method 54
SCARD_IOCTL_FORGETREADERW (IOCTL 0x0009006C) method 55
SCARD_IOCTL_GETATTRIB (IOCTL 0x000900D8) method 58
SCARD_IOCTL_GETDEVICETYPEID (IOCTL 0x00090108) method 60
SCARD_IOCTL_GETREADERICON (IOCTL 0x00090104) method 60
SCARD_IOCTL_GETSTATUSCHANGEA (IOCTL 0x000900A0) method 56
SCARD_IOCTL_GETSTATUSCHANGEW (IOCTL 0x000900A4) method 56
SCARD_IOCTL_GETTRANSMITCOUNT (IOCTL 0x00090100) method 59
SCARD_IOCTL INTRODUCEREADER (IOCTL 0x00090060) method 54
SCARD_IOCTL INTRODUCEREADERGROUPA (IOCTL 0x00090050) method 53
SCARD_IOCTL INTRODUCEREADERGROUPW (IOCTL 0x00090054) method 54
SCARD_IOCTL INTRODUCEREADERW (IOCTL 0x00090064) method 54
SCARD_IOCTL_ISVALIDCONTEXT (IOCTL 0x0009001C) method 52
SCARD_IOCTL_LISTREADERGROUPSA (IOCTL 0x00090020) method 53
SCARD_IOCTL_LISTREADERGROUPSW (IOCTL 0x00090024) method 53
SCARD_IOCTL_LISTREADERSA (IOCTL 0x00090028) method 53
SCARD_IOCTL_LISTREADERSW (IOCTL 0x0009002C) method 53
SCARD_IOCTL_LOCATECARDSA (IOCTL 0x00090098) method 55
SCARD_IOCTL_LOCATECARDSBYATRA (IOCTL 0x000900E8) method 56
SCARD_IOCTL_LOCATECARDSBYATRW (IOCTL 0x000900EC) method 56
SCARD_IOCTL_LOCATECARDSW (IOCTL 0x0009009C) method 56
SCARD_IOCTL_READCACHEA (IOCTL 0x000900F0) method 59
SCARD_IOCTL_READCACHEW (IOCTL 0x000900F4) method 59
SCARD_IOCTL_RECONNECT (IOCTL 0x000900B4) method 58
SCARD_IOCTL_RELEASECONTEXT (IOCTL 0x00090018) method 52
SCARD_IOCTL_RELEASESTARTEDEVENT method 60
SCARD_IOCTL_REMOVEREADERFROMGROUPA (IOCTL 0x00090078) method 55
SCARD_IOCTL_REMOVEREADERFROMGROUPW (IOCTL 0x0009007C) method 55
SCARD_IOCTL_SETATTRIB (IOCTL 0x000900DC) method 59
SCARD_IOCTL_STATE (IOCTL 0x000900C4) method 59

- SCARD_IOCTL_STATUSA (IOCTL 0x000900C8) method 58
- SCARD_IOCTL_STATUSW (IOCTL 0x000900CC) method 58
- SCARD_IOCTL_TRANSMIT (IOCTL 0x000900D0) method 58
- SCARD_IOCTL_WRITECACHEA (IOCTL 0x000900F8) method 60
- SCARD_IOCTL_WRITECACHEW (IOCTL 0x000900FC) method 60
- ScardAccessStartedEvent_Call packet 34
- SCardIO_Request structure 19
- Security 76
 - implementer considerations 76
 - parameter index 76
- Sending Outgoing Messages method 61
- Sequencing rules
 - client 61
 - server 48
- Server
 - abstract data model 48
 - initialization 48
 - local events 60
 - message processing 48
 - SCARD_IOCTL_ACCESSSTARTEDEVENT (IOCTL 0x000900E0) method 52
 - SCARD_IOCTL_ADDREADERTOGROUPA (IOCTL 0x00090070) method 55
 - SCARD_IOCTL_ADDREADERTOGROUPW (IOCTL 0x00090074) method 55
 - SCARD_IOCTL_BEGINTRANSACTION (IOCTL 0x000900BC) method 57
 - SCARD_IOCTL_CANCEL (IOCTL 0x000900A8) method 57
 - SCARD_IOCTL_CONNECTA (IOCTL 0x000900AC) method 57
 - SCARD_IOCTL_CONNECTW (IOCTL 0x000900B0) method 57
 - SCARD_IOCTL_CONTROL (IOCTL 0x000900D4) method 58
 - SCARD_IOCTL_DISCONNECT (IOCTL 0x000900B8) method 57
 - SCARD_IOCTL_ENDTRANSACTION (IOCTL 0x000900C0) method 57
 - SCARD_IOCTL_ESTABLISHCONTEXT (IOCTL 0x00090014) method 52
 - SCARD_IOCTL_FORGETREADER (IOCTL 0x00090068) method 54
 - SCARD_IOCTL_FORGETREADERGROUPA (IOCTL 0x00090058) method 54
 - SCARD_IOCTL_FORGETREADERGROUPW (IOCTL 0x0009005C) method 54
 - SCARD_IOCTL_FORGETREADERW (IOCTL 0x0009006C) method 55
 - SCARD_IOCTL_GETATTRIB (IOCTL 0x000900D8) method 58
 - SCARD_IOCTL_GETDEVICETYPEID (IOCTL 0x00090108) method 60
 - SCARD_IOCTL_GETREADERICON (IOCTL 0x00090104) method 60
 - SCARD_IOCTL_GETSTATUSCHANGEA (IOCTL 0x000900A0) method 56
 - SCARD_IOCTL_GETSTATUSCHANGEW (IOCTL 0x000900A4) method 56
 - SCARD_IOCTL_GETTRANSMITCOUNT (IOCTL 0x00090100) method 59
 - SCARD_IOCTL_INTRODUCEREADER (IOCTL 0x00090060) method 54
 - SCARD_IOCTL_INTRODUCEREADERGROUPA (IOCTL 0x00090050) method 53
 - SCARD_IOCTL_INTRODUCEREADERGROUPW (IOCTL 0x00090054) method 54
 - SCARD_IOCTL_INTRODUCEREADERW (IOCTL 0x00090064) method 54
 - SCARD_IOCTL_ISVALIDCONTEXT (IOCTL 0x0009001C) method 52
 - SCARD_IOCTL_LISTREADERGROUPSA (IOCTL 0x00090020) method 53
 - SCARD_IOCTL_LISTREADERGROUPSW (IOCTL 0x00090024) method 53
 - SCARD_IOCTL_LISTREADERSA (IOCTL 0x00090028) method 53
 - SCARD_IOCTL_LISTREADERSW (IOCTL 0x0009002C) method 53
 - SCARD_IOCTL_LOCATECARDSA (IOCTL 0x00090098) method 55
 - SCARD_IOCTL_LOCATECARDSBYATRA (IOCTL 0x000900E8) method 56
 - SCARD_IOCTL_LOCATECARDSBYATRW (IOCTL 0x000900EC) method 56
 - SCARD_IOCTL_LOCATECARDSW (IOCTL 0x0009009C) method 56
 - SCARD_IOCTL_READCACHEA (IOCTL 0x000900F0) method 59
 - SCARD_IOCTL_READCACHEW (IOCTL 0x000900F4) method 59
 - SCARD_IOCTL_RECONNECT (IOCTL 0x000900B4) method 58
 - SCARD_IOCTL_RELEASECONTEXT (IOCTL 0x00090018) method 52
 - SCARD_IOCTL_RELEASESTARTEDEVENT method 60
 - SCARD_IOCTL_REMOVEREADERFROMGROUPA (IOCTL 0x00090078) method 55
 - SCARD_IOCTL_REMOVEREADERFROMGROUPW (IOCTL 0x0009007C) method 55
 - SCARD_IOCTL_SETATTRIB (IOCTL 0x000900DC) method 59
 - SCARD_IOCTL_STATE (IOCTL 0x000900C4) method 59
 - SCARD_IOCTL_STATUSA (IOCTL 0x000900C8) method 58
 - SCARD_IOCTL_STATUSW (IOCTL 0x000900CC) method 58
 - SCARD_IOCTL_TRANSMIT (IOCTL 0x000900D0) method 58

- SCARD_IOCTL_WRITECACHEA (IOCTL 0x000900F8) method 60
- SCARD_IOCTL_WRITECACHEW (IOCTL 0x000900FC) method 60
- sequencing rules 48
- structures (section 2.2.1 17, section 2.2.2 21)
- timer events 60
- timers 48
- SetAttrib_Call structure 32
- Standards assignments 15
- State_Call structure 29
- State_Return structure 38
- Status call example 74
- Status return example 74
- Status_Call structure 29
- Status_Return structure 38
- Structures
 - client (section 2.2.1 17, section 2.2.3 35)
 - server (section 2.2.1 17, section 2.2.2 21)

T

- Timer events
 - client 70
 - server 60
- Timers
 - client 61
 - server 48
- Tracking changes 84
- Transmit_Call structure 30
- Transmit_Return structure 39
- Transport 17
- Transport - message 17
- Triggered events - higher-layer - client 61

V

- Vendor-extensible fields 15
- Versioning 15

W

- WriteCache_Common structure 20
- WriteCacheA_Call structure 33
- WriteCacheW_Call structure 34