

## [MS-MDE2]:

# Mobile Device Enrollment Protocol Version 2

---

### Intellectual Property Rights Notice for Open Specifications Documentation

- **Technical Documentation.** Microsoft publishes Open Specifications documentation for protocols, file formats, languages, standards as well as overviews of the interaction among each of these technologies.
- **Copyrights.** This documentation is covered by Microsoft copyrights. Regardless of any other terms that are contained in the terms of use for the Microsoft website that hosts this documentation, you may make copies of it in order to develop implementations of the technologies described in the Open Specifications and may distribute portions of it in your implementations using these technologies or your documentation as necessary to properly document the implementation. You may also distribute in your implementation, with or without modification, any schema, IDL's, or code samples that are included in the documentation. This permission also applies to any documents that are referenced in the Open Specifications.
- **No Trade Secrets.** Microsoft does not claim any trade secret rights in this documentation.
- **Patents.** Microsoft has patents that may cover your implementations of the technologies described in the Open Specifications. Neither this notice nor Microsoft's delivery of the documentation grants any licenses under those or any other Microsoft patents. However, a given Open Specification may be covered by Microsoft [Open Specification Promise](#) or the [Community Promise](#). If you would prefer a written license, or if the technologies described in the Open Specifications are not covered by the Open Specifications Promise or Community Promise, as applicable, patent licenses are available by contacting [iplg@microsoft.com](mailto:iplg@microsoft.com).
- **Trademarks.** The names of companies and products contained in this documentation may be covered by trademarks or similar intellectual property rights. This notice does not grant any licenses under those rights. For a list of Microsoft trademarks, visit [www.microsoft.com/trademarks](http://www.microsoft.com/trademarks).
- **Fictitious Names.** The example companies, organizations, products, domain names, e-mail addresses, logos, people, places, and events depicted in this documentation are fictitious. No association with any real company, organization, product, domain name, email address, logo, person, place, or event is intended or should be inferred.

**Reservation of Rights.** All other rights are reserved, and this notice does not grant any rights other than specifically described above, whether by implication, estoppel, or otherwise.

**Tools.** The Open Specifications do not require the use of Microsoft programming tools or programming environments in order for you to develop an implementation. If you have access to Microsoft programming tools and environments you are free to take advantage of them. Certain Open Specifications are intended for use in conjunction with publicly available standard specifications and network programming art, and assumes that the reader either is familiar with the aforementioned material or has immediate access to it.

## Revision Summary

Date	Revision History	Revision Class	Comments
6/30/2015	1.0	New	Released new document.

# Table of Contents

<b>1</b>	<b>Introduction</b>	<b>6</b>
1.1	Glossary	6
1.2	References	9
1.2.1	Normative References	9
1.2.2	Informative References	10
1.3	Overview	10
1.4	Relationship to Other Protocols	12
1.5	Prerequisites/Preconditions	13
1.6	Applicability Statement	13
1.7	Versioning and Capability Negotiation	13
1.8	Vendor-Extensible Fields	13
1.9	Standards Assignments	13
<b>2</b>	<b>Messages</b>	<b>14</b>
2.1	Transport	14
2.2	Common Message Syntax	14
2.2.1	Namespaces	14
2.2.2	Messages	14
2.2.3	Elements	15
2.2.4	Complex Types	15
2.2.5	Simple Types	15
2.2.6	Attributes	15
2.2.7	Groups	15
2.2.8	Attribute Groups	15
2.2.9	Common Data Structures	15
2.2.9.1	XML Provisioning Schema	15
2.2.9.2	CertificateStore Configuration Service Provider	17
2.2.9.3	DMClient Configuration Service Provider	24
2.2.9.4	RootCATrustedCertificate Configuration Service Provider	31
2.2.9.5	w7 APPLICATION Configuration Service Provider	34
2.2.9.6	OSEdition Enumeration	38
<b>3</b>	<b>Protocol Details</b>	<b>41</b>
3.1	IDiscoveryService Server Details	41
3.1.1	Abstract Data Model	43
3.1.2	Timers	43
3.1.3	Initialization	43
3.1.4	Message Processing Events and Sequencing Rules	43
3.1.4.1	Discover	43
3.1.4.1.1	Messages	44
3.1.4.1.1.1	IDiscoveryService_Discover_InputMessage Message	44
3.1.4.1.1.2	IDiscoveryService_Discover_OutputMessage Message	44
3.1.4.1.2	Elements	45
3.1.4.1.2.1	Discover	45
3.1.4.1.2.2	DiscoverResponse	45
3.1.4.1.3	Complex Types	45
3.1.4.1.3.1	DiscoveryRequest	46
3.1.4.1.3.2	DiscoveryResponse	47
3.1.5	Timer Events	48
3.1.6	Other Local Events	48
3.2	Interaction with Security Token Service (STS)	48
3.3	Interaction with X.509 Certificate Enrollment Policy	48
3.3.1	Abstract Data Model	48
3.3.2	Timers	48
3.3.3	Initialization	48

3.3.4	Message Processing Events and Sequencing Rules .....	48
3.3.4.1	GetPolicies Operation .....	48
3.3.4.1.1	Messages .....	48
3.3.4.1.1.1	GetPolicies .....	49
3.3.4.1.1.1.1	Get Policies using Federated Authentication .....	49
3.3.4.1.1.1.2	GetPolicies using Certificate Authentication .....	50
3.3.4.1.1.1.3	GetPolicies using On-Premise Authentication .....	52
3.3.4.1.1.2	GetPoliciesResponse .....	52
3.3.5	Timer Events .....	54
3.3.6	Other Local Events .....	54
3.4	Interaction with WS-Trust X.509v3 Token Enrollment .....	54
3.4.1	Abstract Data Model .....	54
3.4.2	Timers .....	54
3.4.3	Initialization .....	54
3.4.4	Message Processing Events and Sequencing Rules .....	54
3.4.4.1	RequestSecurityToken Operation .....	55
3.4.4.1.1	Messages .....	55
3.4.4.1.1.1	RequestSecurityToken .....	55
3.4.4.1.1.1.1	RequestSecurityToken using Federated Authentication .....	56
3.4.4.1.1.1.2	RequestSecurityToken using Certificate Authentication .....	58
3.4.4.1.1.1.3	RequestSecurityToken using On-Premise Authentication .....	61
3.4.4.1.1.2	RequestSecurityTokenResponseCollection .....	63
3.4.5	Timer Events .....	64
3.4.6	Other Local Events .....	64
3.5	Certificate Renewal .....	64
3.5.1	Abstract Data Model .....	64
3.5.2	Timers .....	65
3.5.3	Initialization .....	65
3.5.4	Message Processing Events and Sequencing Rules .....	65
3.5.4.1	RequestSecurityToken Operation .....	65
3.5.4.1.1	Messages .....	65
3.5.4.1.1.1	RequestSecurityToken .....	65
3.5.4.1.1.2	RequestSecurityTokenCollectionResponse .....	67
3.5.5	Timer Events .....	67
3.5.6	Other Local Events .....	67
<b>4</b>	<b>Protocol Examples .....</b>	<b>68</b>
4.1	Discovery Example .....	68
4.1.1	Discovery Example: Request .....	68
4.1.1.1	Discovery Example Request Using Federated Authentication .....	68
4.1.1.2	Discovery Example Request Using Certificate Authentication .....	69
4.1.1.3	Discovery Example Request Using On-Premise Authentication .....	69
4.1.2	Discovery Example: Response .....	70
4.1.2.1	Discovery Example Response using Federated Authentication .....	70
4.1.2.2	Discovery Example Response using Certificate Authentication .....	71
4.1.2.3	Discovery Example Response using On-Premise Authentication .....	72
4.2	GetPolicies Example .....	72
4.2.1	GetPolicies Example: Request .....	72
4.2.1.1	GetPolicies Example Request using Federated Authentication .....	73
4.2.1.2	GetPolicies Example Request using Certificate Authentication .....	73
4.2.1.3	GetPolicies Example Request using On-Premise Authentication .....	75
4.2.2	GetPolicies Example: Response .....	75
4.3	RequestSecurityToken Example .....	77
4.3.1	RequestSecurityToken Example: Request .....	77
4.3.1.1	RequestSecurityToken Example: Request using Federated Authentication ....	77
4.3.1.2	RequestSecurityToken Example: Request using Certificate Authentication ....	79
4.3.1.3	RequestSecurityToken Example: Request using On-Premise Authentication ..	81
4.3.2	RequestSecurityToken Example: Response .....	82

<b>5</b>	<b>Security</b> .....	<b>84</b>
5.1	Security Considerations for Implementers .....	84
5.2	Index of Security Parameters .....	84
<b>6</b>	<b>Appendix A: Full WSDL</b> .....	<b>85</b>
<b>7</b>	<b>Appendix B: Product Behavior</b> .....	<b>87</b>
<b>8</b>	<b>Change Tracking</b> .....	<b>88</b>
<b>9</b>	<b>Index</b> .....	<b>89</b>

# 1 Introduction

An industry trend has been developing in which employees connect their personal mobile computing devices to the corporate network and resources (either on premise or through the cloud) to perform workplace tasks. This trend requires support for easy configuration of the network and resources, such that employees can register personal devices with the company for work-related purposes. Applications and technology to support easy configuration must also enable IT professionals to manage the risk associated with having uncontrolled devices connected to the corporate network.

The Mobile Device Management Protocol (MDM) [\[MS-MDM\]](#) specifies a protocol for managing devices through a **Device Management Service (DMS)**. This document describes Version 2 of the Mobile Device Enrollment Protocol (MDE), which enables enrolling a device with the **DMS** through an **Enrollment Service (ES)**. The protocol includes the discovery of the **Management Enrollment Service (MES)** and enrollment with the ES.

Sections 1.8, 2, and 3 of this specification are normative and can contain the terms MAY, SHOULD, MUST, MUST NOT, and SHOULD NOT as defined in [\[RFC2119\]](#). Sections 1.5 and 1.9 are also normative but do not contain those terms. All other sections and examples in this specification are informative.

## 1.1 Glossary

The following terms are specific to this document:

**base64 encoding:** A binary-to-text encoding scheme whereby an arbitrary sequence of bytes is converted to a sequence of printable ASCII characters, as described in [\[RFC4648\]](#).

**certificate:** A certificate is a collection of attributes (1) and extensions that can be stored persistently. The set of attributes in a certificate can vary depending on the intended usage of the certificate. A certificate securely binds a public key to the entity that holds the corresponding private key. A certificate is commonly used for authentication (2) and secure exchange of information on open networks, such as the Internet, extranets, and intranets. Certificates are digitally signed by the issuing **certification authority (CA)** and can be issued for a user, a computer, or a service. The most widely accepted format for certificates is defined by the ITU-T X.509 version 3 international standards. For more information about attributes and extensions, see [\[RFC3280\]](#) and [\[X509\]](#) sections 7 and 8.

**certificate enrollment:** The process of acquiring a digital certificate from a certificate authority. This certificate and its associated **private key** establish a trusted identity for an entity that is using the **public key**-based services and applications.

**certificate enrollment policy:** The collection of **certificate templates** and **certificate** issuers available to the requestor for **X.509 certificate enrollment**.

**certificate policy:** A document that identifies the actors of a public key infrastructure (PKI), along with their roles and tasks.

**certificate signing request:** In a public key infrastructure (PKI) configuration, a request message sent from a requestor to a certification authority (CA) to apply for a digital identity certificate.

**certificate template:** A list of attributes that define a blueprint for creating an **X.509 certificate**. It is often referred to in non-Microsoft documentation as a "certificate profile". A **certificate template** is used to define the content and purpose of a digital certificate, including issuance requirements (certificate policies), implemented **X.509** extensions such as application policies, key usage, or extended key usage as specified in [\[X509\]](#), and enrollment permissions. Enrollment permissions define the rules by which a **certification authority (CA)** will issue or deny certificate requests. In Windows environments, **certificate templates** are stored as objects in the Active Directory and used by Microsoft enterprise **CAs**.

**certification authority (CA):** A third party that issues **public key certificates**. Certificates serve to bind public keys to a user identity. Each user and certification authority (CA) can decide whether to trust another user or CA for a specific purpose, and whether this trust should be transitive. For more information, see [RFC3280].

**client:** A client device that is capable of issuing OMA-DM commands to a server and responding to OMA-DM commands issued by a server.

**device management client:** An application or agent running on a device that implements the Mobile Device Management Protocol [MS-MDM].

**Device Management Service (DMS):** Server software that secures, monitors, manages, and supports devices deployed across mobile operators, service providers, and enterprises.

**Digital Media Server (DMS):** A device class defined in the DLNA Guidelines. A **DMS** is an UPnP device that implements the UPnP MediaServer device type.

**Discovery Service (DS):** A simple protocol based on an endpoint with a known portion of an address that is used to discover services which have no upfront name or location hints.

**Domain Name System (DNS):** A hierarchical, distributed database that contains mappings of domain names (1) to various types of data, such as IP addresses. DNS enables the location of computers and services by user-friendly names, and it also enables the discovery of other information stored in the database.

**enrollment client:** An application or agent that implements the initiator or client portion of MDE.

**Enrollment Service (ES):** A server or collection of servers implementing the WS-Trust X.509v3 Token Enrollment Extensions [MS-WSTEP].

**ES endpoint:** A service endpoint for handling enrollment requests from clients.

**hash:** A fixed-size result that is obtained by applying a one-way mathematical function, which is sometimes referred to as a hash algorithm, to an arbitrary amount of data. If the input data changes, the hash also changes. The hash can be used in many operations, including authentication (2) and digital signing.

**Hypertext Transfer Protocol (HTTP):** An application-level protocol for distributed, collaborative, hypermedia information systems (text, graphic images, sound, video, and other multimedia files) on the World Wide Web.

**Management Enrollment Service (MES):** A server or collection of servers implementing the server side of MDE.

**MD5 hash:** A hashing algorithm, as described in [RFC1321], that was developed by RSA Data Security, Inc. An MD5 hash is used by the File Replication Service (FRS) to verify that a file on each replica member is identical.

**object identifier (OID):** In the context of an object server, a 64-bit number that uniquely identifies an object.

**private key:** One of a pair of keys used in public-key cryptography. The private key is kept secret and is used to decrypt data that has been encrypted with the corresponding public key. For an introduction to this concept, see [CRYPTO] section 1.8 and [IEEE1363] section 3.1.

**provisioning information:** In MDE, the service endpoint to the DMS which is a prerequisite for the device management client to initiate a session.

**public key:** One of a pair of keys used in public-key cryptography. The public key is distributed freely and published as part of a digital certificate. For an introduction to this concept, see [CRYPTO] section 1.8 and [IEEE1363] section 3.1.

**Secure Sockets Layer (SSL):** A security protocol that supports confidentiality and integrity of messages in client and server applications that communicate over open networks. SSL uses two keys to encrypt data—a **public key** known to everyone and a private or secret key known only to the recipient of the message. SSL supports server and, optionally, client authentication (2) using **X.509 certificates**. For more information, see [X509]. The SSL protocol is precursor to **Transport Layer Security (TLS)**. The TLS version 1.0 specification is based on SSL version 3.0.

**security token:** A collection of one or more claims. Specifically in the case of mobile devices, a **security token** represents a previously authenticated user as defined in the Mobile Device Enrollment Protocol [[MS-MDE](#)].

**security token service (STS):** A web service that issues claims (2) and packages them in encrypted security tokens.

**service endpoint:** A server or collection of servers that expose one or more service endpoints to which messages can be sent.

**SHA-1:** An algorithm that generates a 160-bit hash value from an arbitrary amount of input data, as described in [[RFC3174](#)]. SHA-1 is used with the Digital Signature Algorithm (DSA) in the Digital Signature Standard (DSS), in addition to other algorithms and standards.

**SHA-1 hash:** A hashing algorithm as specified in [[FIPS180-2](#)] that was developed by the National Institute of Standards and Technology (NIST) and the National Security Agency (NSA).

**SOAP action:** The HTTP request header field used to indicate the intent of the SOAP request, using a URI value. See [[SOAP1.1](#)] section 6.1.1 for more information.

**SOAP body:** A container for the payload data being delivered by a SOAP message to its recipient. See [[SOAP1.2-1/2007](#)] section 5.3 for more information.

**SOAP header:** A mechanism for implementing extensions to a SOAP message in a decentralized manner without prior agreement between the communicating parties. See [[SOAP1.2-1/2007](#)] section 5.2 for more information.

**Transmission Control Protocol (TCP):** A protocol used with the Internet Protocol (IP) to send data in the form of message units between computers over the Internet. TCP handles keeping track of the individual units of data (called packets) that a message is divided into for efficient routing through the Internet.

**Transport Layer Security (TLS):** A security protocol that supports confidentiality and integrity of messages in client and server applications communicating over open networks. **TLS** supports server and, optionally, client authentication by using X.509 certificates (as specified in [X509]). **TLS** is standardized in the IETF TLS working group. See [[RFC4346](#)].

**trusted platform module (TPM):** A component of a trusted computing platform. The TPM stores keys, passwords, and digital certificates. See [[TCG-Architect](#)] for more information.

**web service:** A unit of application logic that provides data and services to other applications and can be called by using standard Internet transport protocols such as **HTTP**, Simple Mail Transfer Protocol (SMTP), or File Transfer Protocol (FTP). Web services can perform functions that range from simple requests to complicated business processes.

**Web Services Description Language (WSDL):** An XML format for describing network services as a set of endpoints that operate on messages that contain either document-oriented or procedure-oriented information. The operations and messages are described abstractly and are bound to a concrete network protocol and message format in order to define an endpoint. Related concrete endpoints are combined into abstract endpoints, which describe a network service. WSDL is extensible, which allows the description of endpoints and their messages regardless of the message formats or network protocols that are used.



**X.509:** An ITU-T standard for public key infrastructure subsequently adapted by the IETF, as specified in [RFC3280].

**XML:** The Extensible Markup Language, as described in [XML1.0].

**XML namespace:** A collection of names that is used to identify elements, types, and attributes in XML documents identified in a URI reference [RFC3986]. A combination of XML namespace and local name allows XML documents to use elements, types, and attributes that have the same names but come from different sources. For more information, see [XMLNS-2ED].

**XML Path Language (XPath):** A language used to create expressions that can address parts of an XML document, manipulate strings, numbers, and Booleans, and can match a set of nodes in the document, as specified in [XPath]. XPath models an XML document as a tree of nodes of different types, including element, attribute, and text. XPath expressions can identify the nodes in an XML document based on their type, name, and values, as well as the relationship of a node to other nodes in the document.

**MAY, SHOULD, MUST, SHOULD NOT, MUST NOT:** These terms (in all caps) are used as defined in [RFC2119]. All statements of optional behavior use either MAY, SHOULD, or SHOULD NOT.

## 1.2 References

Links to a document in the Microsoft Open Specifications library point to the correct section in the most recently published version of the referenced document. However, because individual documents in the library are not updated at the same time, the section numbers in the documents may not match. You can confirm the correct section numbering by checking the [Errata](#).

### 1.2.1 Normative References

We conduct frequent surveys of the normative references to assure their continued availability. If you have any issue with finding a normative reference, please contact [dochelp@microsoft.com](mailto:dochelp@microsoft.com). We will assist you in finding the relevant information.

[MS-MDE] Microsoft Corporation, "[Mobile Device Enrollment Protocol](#)".

[MS-MDM] Microsoft Corporation, "[Mobile Device Management Protocol](#)".

[MS-WSTEP] Microsoft Corporation, "[WS-Trust X.509v3 Token Enrollment Extensions](#)".

[MS-XCEP] Microsoft Corporation, "[X.509 Certificate Enrollment Policy Protocol](#)".

[RFC2119] Bradner, S., "Key words for use in RFCs to Indicate Requirement Levels", BCP 14, RFC 2119, March 1997, <http://www.rfc-editor.org/rfc/rfc2119.txt>

[RFC2616] Fielding, R., Gettys, J., Mogul, J., et al., "Hypertext Transfer Protocol -- HTTP/1.1", RFC 2616, June 1999, <http://www.rfc-editor.org/rfc/rfc2616.txt>

[SOAP1.2-1/2003] Gudgin, M., Hadley, M., Mendelsohn, N., et al., "SOAP Version 1.2 Part 1: Messaging Framework", W3C Recommendation, June 2003, <http://www.w3.org/TR/2003/REC-soap12-part1-20030624>

[SOAP1.2-2/2003] Gudgin, M., Hadley, M., Mendelsohn, N., et al., "SOAP Version 1.2 Part 2: Adjuncts", W3C Recommendation, June 2003, <http://www.w3.org/TR/2003/REC-soap12-part2-20030624>

[WSDL] Christensen, E., Curbera, F., Meredith, G., and Weerawarana, S., "Web Services Description Language (WSDL) 1.1", W3C Note, March 2001, <http://www.w3.org/TR/2001/NOTE-wsdl-20010315>

[WSTrust1.3] Lawrence, K., Kaler, C., Nadalin, A., et al., "WS-Trust 1.3", March 2007, <http://docs.oasis-open.org/ws-sx/ws-trust/200512/ws-trust-1.3-os.html>

[XMLNS] Bray, T., Hollander, D., Layman, A., et al., Eds., "Namespaces in XML 1.0 (Third Edition)", W3C Recommendation, December 2009, <http://www.w3.org/TR/2009/REC-xml-names-20091208/>

[XMLSCHEMA1] Thompson, H., Beech, D., Maloney, M., and Mendelsohn, N., Eds., "XML Schema Part 1: Structures", W3C Recommendation, May 2001, <http://www.w3.org/TR/2001/REC-xmlschema-1-20010502/>

[XMLSCHEMA2] Biron, P.V., Ed. and Malhotra, A., Ed., "XML Schema Part 2: Datatypes", W3C Recommendation, May 2001, <http://www.w3.org/TR/2001/REC-xmlschema-2-20010502/>

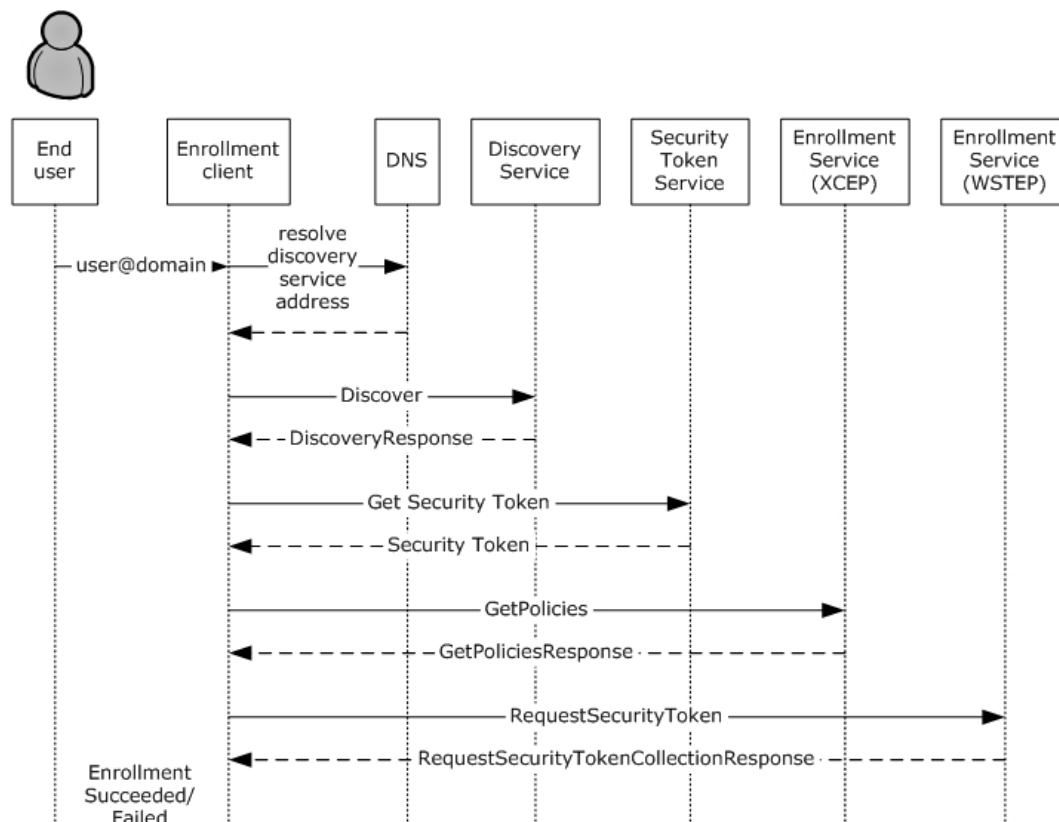
## 1.2.2 Informative References

None.

## 1.3 Overview

**The Mobile Device Enrollment (MDE) protocol** enables a device to be enrolled with a Device Management Service (DMS) through an Enrollment Service (ES), including the discovery of the Management Enrollment Service (MES) and enrollment with the ES. After a device is enrolled, the device can be managed with the DMS using MDM.<1>

The process for enrolling a device using MDE2 is shown in the following diagram.

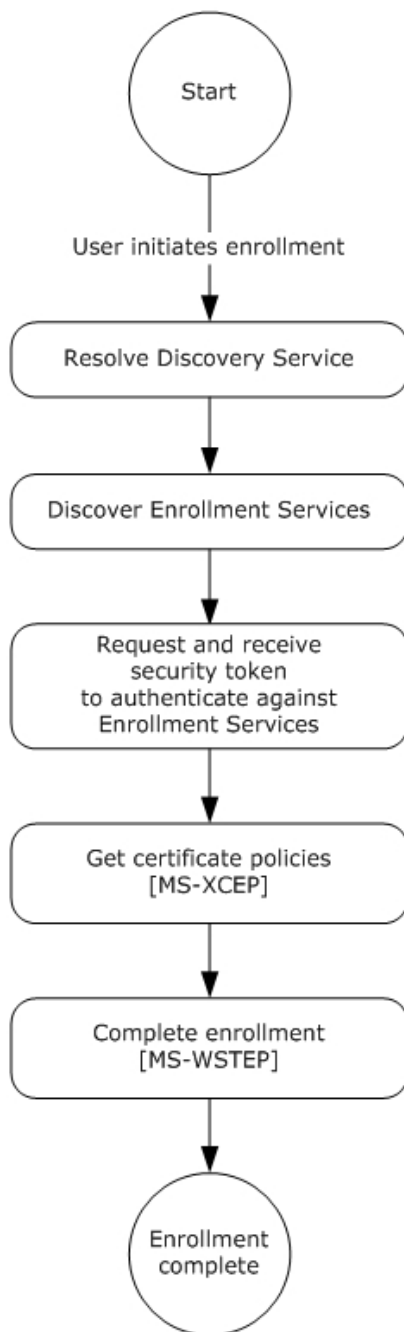


**Figure 1: Typical sequence for enrolling a message using MDE2**

The enrollment process consists of the following steps.

1. The user's email name is entered via the **enrollment client**.
2. The enrollment client extracts the domain suffix from the email address, prepends the domain name with a well-known label, and resolves the address to the **Discovery Service (DS)**. The administrator configures the network name resolution service (that is, the **Domain Name System (DNS)**) appropriately.
3. The enrollment client sends an **HTTP** GET request to the Discovery Service (DS) to validate the existence of the **service endpoint**.
4. The enrollment client sends a **Discover** message (section [3.1.4.1.1.1](#)) to the Discovery Service (DS). The Discovery Service (DS) responds with a **DiscoverResponse** message (section [3.1.4.1.1.2](#)) containing the Uniform Resource Locators (URLs) of service endpoints required for the following steps.
5. The enrollment client communicates with the **security token service (STS)** (section [3.2](#)) to obtain a **security token** to authenticate with the ES.
6. The enrollment client sends a **GetPolicies** message (section [3.3.4.1.1.1](#)) the **ES endpoint [MS-XCEP]** using the security token received in the previous step. The ES endpoint [MS-XCEP] responds with a **GetPoliciesResponse** message (section [3.3.4.1.1.2](#)) containing the **certificate policies** required for the next step. For more information about these messages, see [MS-XCEP] sections 3.1.4.1.1.1 and 3.1.4.1.1.2.
7. The enrollment client can send a **RequestSecurityToken** message (section [3.4.4.1.1.1](#)) to the ES endpoint [\[MS-WSTEP\]](#) using the security token received in step 4. The ES endpoint [MS-WSTEP] responds with a **RequestSecurityTokenResponseCollection** message (section [3.4.4.1.1.2](#)) containing the identity and **provisioning information** for the **device management client [MS-MDM]**. For more information about these messages, see [MS-WSTEP] sections 3.1.4.1.1.1 and 3.1.4.1.1.2.

The steps for MDE2 device enrollment correspond to five phases as shown in the following diagram.



**Figure 2: MDE2 device enrollment phases**

#### 1.4 Relationship to Other Protocols

MDE2 depends on the WS-Trust X.509v3 Token Enrollment Extensions [\[MS-WSTEP\]](#).

MDE2 depends on the X.509 Certificate Enrollment Policy Protocol [\[MS-XCEP\]](#).

The Mobile Device Management Protocol (MDM) depends on MDE2. A device has to be enrolled in an MES through the use of MDE2 before the device can be managed using MDM [\[MS-MDM\]](#).

Mobile Device Enrollment Version 2 Protocol (MDE2)
SOAP 1.2 [SOAP1.2-1/2003], [SOAP1.2-2/2003]
HTTPS
TCP/IP [RFC2616]

**Figure 3: Relationship to other protocols**

### 1.5 Prerequisites/Preconditions

MDE2 issues X.509v3 [\[MS-WSTEP\]](#) certificates and provisioning information for device management clients [\[MS-MDM\]](#) to enable a relationship between the user and a device in the DMS.

The MES issues a security token (after appropriate authentication) that is used to authenticate to the ES.

The ES communicates with a **certification authority (CA)** to issue an **X.509 certificate**.

The ES issues provisioning information for a device management client [MS-MDM]. The ES has to be configured with this information or be able to retrieve it from the DMS.

### 1.6 Applicability Statement

A device has to be enrolled in an MES through the use of MDE2 before the device can be managed using MDM [\[MS-MDM\]](#).

### 1.7 Versioning and Capability Negotiation

None.

### 1.8 Vendor-Extensible Fields

None.

### 1.9 Standards Assignments

None.

## 2 Messages

### 2.1 Transport

MDE2 is a client-to-server protocol that consists of a SOAP-based Web service.

MDE2 operates over the following **Web services** transport:

- SOAP 1.2 ([\[SOAP1.2-1/2003\]](#), [\[SOAP1.2-2/2003\]](#)) over HTTPS over **TCP/IP** [\[RFC2616\]](#)

### 2.2 Common Message Syntax

This section contains common definitions used by this protocol. The syntax of the definitions uses the XML Schema as defined in [\[XMLSCHEMA1\]](#) and [\[XMLSCHEMA2\]](#), and the **Web Services Description Language (WSDL)** as defined in [\[WSDL\]](#).

#### 2.2.1 Namespaces

This specification defines and references various **XML namespaces** using the mechanisms specified in [\[XMLNS\]](#). Although this specification associates a specific XML namespace prefix for each XML namespace that is used, the choice of any particular XML namespace prefix is implementation-specific and not significant for interoperability.

Prefixes and XML namespaces used in this specification are as follows.

Prefix	Namespace URI	Reference
ac	<a href="http://schemas.microsoft.com/windows/pki/2009/01/enrollment">http://schemas.microsoft.com/windows/pki/2009/01/enrollment</a>	<a href="#">[MS-WSTEP]</a>
tns	<a href="http://schemas.microsoft.com/windows/pki/2012/01/enrollment">http://schemas.microsoft.com/windows/pki/2012/01/enrollment</a>	This specification
wsaw	<a href="http://www.w3.org/2006/05/addressing/wsdl">http://www.w3.org/2006/05/addressing/wsdl</a>	
wsdl	<a href="http://schemas.xmlsoap.org/wsdl/">http://schemas.xmlsoap.org/wsdl/</a>	<a href="#">[WSDL]</a>
wst	<a href="http://docs.oasis-open.org/ws-sx/ws-trust/200512">http://docs.oasis-open.org/ws-sx/ws-trust/200512</a>	<a href="#">[WSTrust1.3]</a>
xcep	<a href="http://schemas.microsoft.com/windows/pki/2009/01/enrollmentpolicy">http://schemas.microsoft.com/windows/pki/2009/01/enrollmentpolicy</a>	<a href="#">[MS-XCEP]</a>
xsd	<a href="http://www.w3.org/2001/XMLSchema">http://www.w3.org/2001/XMLSchema</a>	<a href="#">[XMLSCHEMA1]</a>
u	<a href="http://docs.oasis-open.org/wss/2004/01/oasis-200401-wss-wssecurity-utility-1.0.xsd">http://docs.oasis-open.org/wss/2004/01/oasis-200401-wss-wssecurity-utility-1.0.xsd</a>	
ds	<a href="http://www.w3.org/2000/09/xmldsig#">http://www.w3.org/2000/09/xmldsig#</a>	
wsse	<a href="http://docs.oasis-open.org/wss/2004/01/oasis-200401-wss-wssecurity-secext-1.0.xsd">http://docs.oasis-open.org/wss/2004/01/oasis-200401-wss-wssecurity-secext-1.0.xsd</a>	

#### 2.2.2 Messages

This specification does not define any common XML Schema message definitions.

### 2.2.3 Elements

This specification does not define any common XML Schema element definitions.

### 2.2.4 Complex Types

This specification does not define any common XML Schema complex type definitions.

### 2.2.5 Simple Types

This specification does not define any common XML Schema simple type definitions.

### 2.2.6 Attributes

This specification does not define any common XML Schema attribute definitions.

### 2.2.7 Groups

This specification does not define any common XML Schema group definitions.

### 2.2.8 Attribute Groups

This specification does not define any common XML Schema attribute group definitions.

### 2.2.9 Common Data Structures

#### 2.2.9.1 XML Provisioning Schema

The entire XML provisioning document is **base64-encoded**. The document contains:

- The requested client certificate, the trusted root certificate, and intermediate certificates.
- The provisioning information for the device management client.

The enrollment client installs the client certificate, as well as the trusted root certificate and intermediate certificates. The provisioning information includes content such as the location of the Device Management Service (DMS) and various properties that the device management client uses to communicate with the DMS.

The following schema is an example of the XML required for the provisioning document. The explanation for each field in the document appears inline in the example as XML comments.

```
<wap-provisioningdoc version="1.1">
  <characteristic type="CertificateStore">
    <characteristic type="Root">
      <characteristic type="System">
        <characteristic type="031336C933CC7E228B88880D78824FB2909A0A2F">
          <parm name="EncodedCertificate" value="B64 encoded cert insert here" />
        </characteristic>
      </characteristic>
    </characteristic>
  </characteristic>
  <characteristic type="CertificateStore">
    <characteristic type="My" >
      <characteristic type="User">
        <characteristic type="F9A4F20FC50D990FDD0E3DB9AFCBF401818D5462">
          <parm name="EncodedCertificate" value="B64EncodedCertInsertedHere" />
        </characteristic>
      </characteristic>
    </characteristic>
  </characteristic>
</wap-provisioningdoc>
```

```

        <characteristic type="PrivateKeyContainer"/>
        <!-- This tag must be present for XML syntax correctness. -->
    </characteristic>
    <characteristic type="WSTEP">
        <characteristic type="Renew">
            <!--If the datatype for ROBOSupport, RenewPeriod, and RetryInterval tags exist,
they must be set explicitly. -->
            <parm name="ROBOSupport" value="true" datatype="boolean"/>
            <parm name="RenewPeriod" value="60" datatype="integer"/>
            <parm name="RetryInterval" value="4" datatype="integer"/>
        </characteristic>
    </characteristic>
</characteristic>
<characteristic type="APPLICATION">
    <parm name="APPID" value="w7"/>
    <parm name="PROVIDER-ID" value="TestMDMServer"/>
    <parm name="NAME" value="Microsoft"/>
    <parm name="ADDR" value="https://DM.contoso.com:443/omadm/Windows.ashx"/>
    <parm name="CONNRETRYFREQ" value="6" />
    <parm name="INITIALBACKOFFTIME" value="30000" />
    <parm name="MAXBACKOFFTIME" value="120000" />
    <parm name="BACKCOMPATRETRYDISABLED" />
    <parm name="DEFAULTENCODING" value="application/vnd.syncml.dm+wbxml" />
    <parm name="SSLCLIENTCERTSEARCHCRITERIA" value=

"Subject=DC%3dcom%2cDC%3dmicrosoft%2cCN%3dUsers%2cCN%3dAdministrator&amp;Stores=My%5CUser"/>
    <characteristic type="APPAUTH">
        <parm name="AAUTHLEVEL" value="CLIENT"/>
        <parm name="AAUTHTYPE" value="DIGEST"/>
        <parm name="AAUTHSECRET" value="password1"/>
        <parm name="AAUTHDATA" value="B64encodedBinaryNonceInsertedHere"/>
    </characteristic>
    <characteristic type="APPAUTH">
        <parm name="AAUTHLEVEL" value="APPSRV"/>
        <parm name="AAUTHTYPE" value="BASIC"/>
        <parm name="AAUTHNAME" value="testclient"/>
        <parm name="AAUTHSECRET" value="password2"/>
    </characteristic>
</characteristic>
    <characteristic type="DMClient"> <!--When available, an enrollment server should use
DMClient CSP XML to configure DM polling schedules. -->
    <characteristic type="Provider">
<!-- ProviderID in DMClient CSP must match to PROVIDER-ID in w7 APPLICATION characteristics -
->
        <characteristic type="TestMDMServer">
            <parm name="UPN" value="UserPrincipalName@domain.com" datatype="string" />
            <characteristic type="Poll">
                <parm name="NumberOfFirstRetries" value="8" datatype="integer" />
                <parm name="IntervalForFirstSetOfRetries" value="15" datatype="integer" />
                <parm name="NumberOfSecondRetries" value="5" datatype="integer" />
                <parm name="IntervalForSecondSetOfRetries" value="3" datatype="integer" />
                <parm name="NumberOfRemainingScheduledRetries" value="0" datatype="integer"
/>
            </characteristic>
<!-- MDM push can be used where available to support real-time communication. The DM client
long term polling schedule's retry waiting interval should be more than 24 hours (1440) to
reduce the impact to data consumption and battery life. Refer to the DMClient Configuration
Service Provider section for information about polling schedule parameters.-->
            <parm name="IntervalForRemainingScheduledRetries" value="1560" datatype="integer" />
            <parm name="PollOnLogin" value="true" datatype="boolean" />
        </characteristic>
        <parm name="EntDeviceName" value="Administrator_Windows" datatype="string" />
    </characteristic>
</characteristic>
</characteristic>
<!-- The EnterpriseAppManagement
Configuration Service Provider is being deprecated. A
replacement will be provided in the future for company hub installation. -->

```



</wap-provisioningdoc>

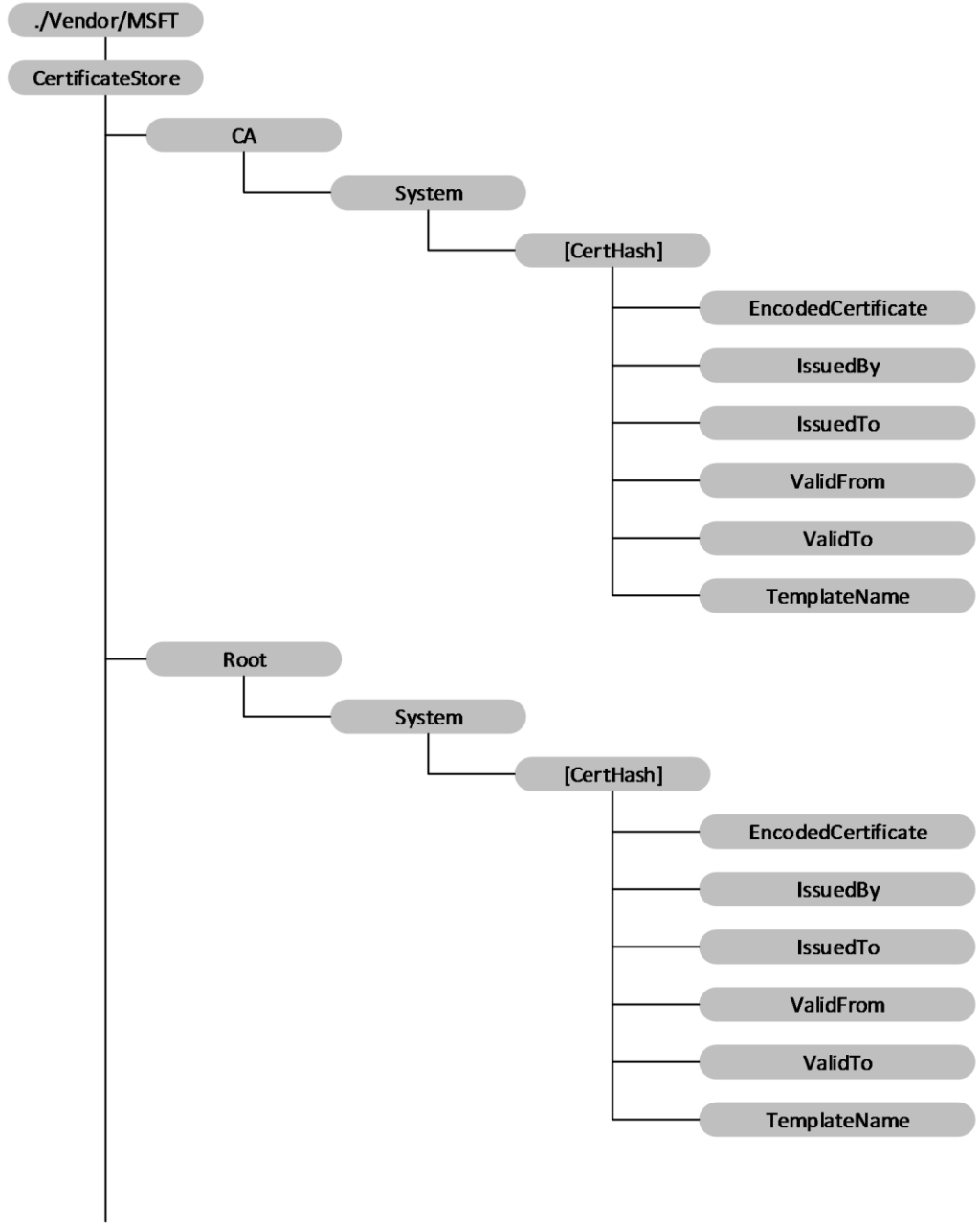
### 2.2.9.2 CertificateStore Configuration Service Provider

The CertificateStore configuration service provider is used to add **Secure Sockets Layer (SSL)**, intermediate, and self-signed certificates.

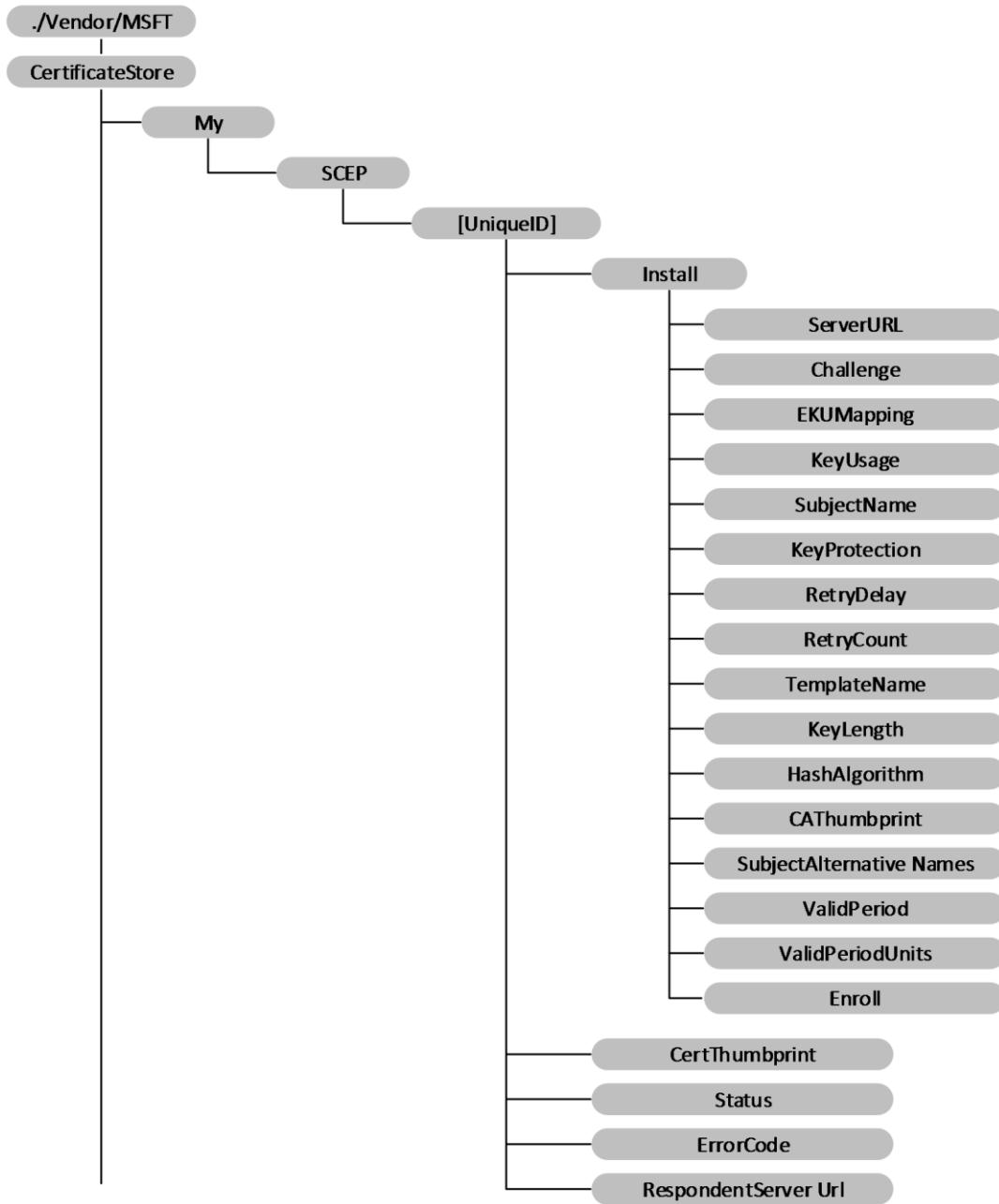
**Note:** The CertificateStore configuration service provider does not support installing **client** certificates.

The following diagram shows the CertificateStore configuration service provider management object in tree format.

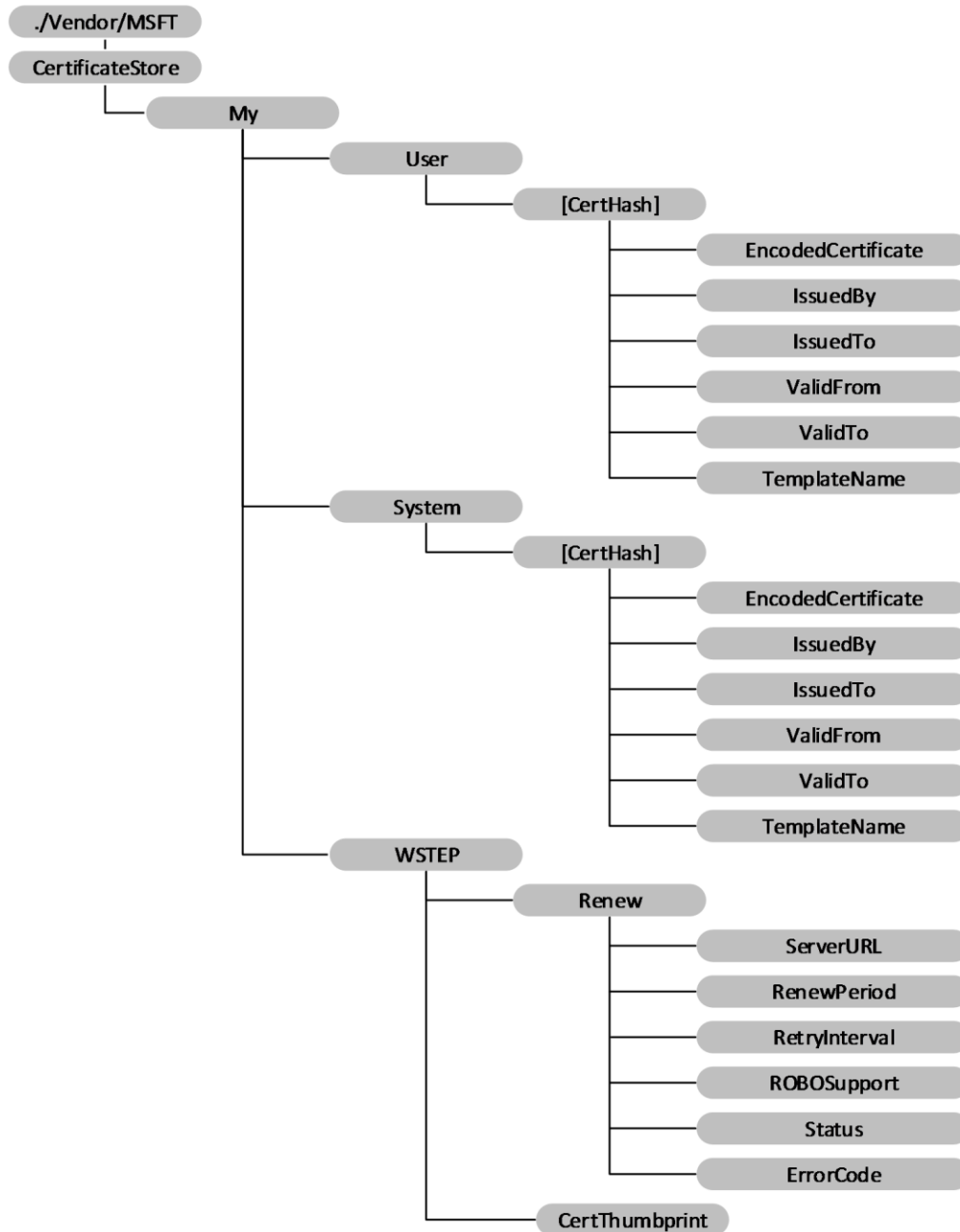
CertificateStore diagram 1 of 3



CertificateStore diagram 2 of 3



CertificateStore diagram 3 of 3



**Figure 4: The CertificateStore configuration service provider management object in tree format**

**Root/System:** Defines the certificate store that contains root, or self-signed, certificates. Supported operation is Get. Note that Root/System is case sensitive.

**CA/System:** Defines the certificate store that contains cryptographic information, including intermediary certification authorities. Supported operation is Get. Note that CA/System is case sensitive.

**My/User:** Defines the certificate store that contains public keys for client certificates. This is only used by enterprise servers to push down the public key of a client certificate. The client certificate

is used by the device client to authenticate itself to the enterprise server for device management and downloading enterprise applications. Supported operation is Get. Note that My/User is case sensitive.

**My/System:** Defines the certificate store that contains the **public key** for the client certificate. This is only used by enterprise server to push down the public key of the client certificate. The client certificate is used by the device to authenticate itself to the enterprise server for device management and enterprise app downloading. Supported operation is Get. Note that My/System is case sensitive.

**[CertHash]:** Defines the **SHA-1 hash** for the certificate. The 20-byte value of the **SHA-1** certificate **hash** is specified as a hexadecimal string value. Supported operations are Get, Delete, and Replace.

**[CertHash]/EncodedCertificate:** Required. Specifies the X.509 certificate as a base64-encoded string. The Base-64 string value cannot include extra formatting characters such as embedded linefeeds, etc. Supported operations are Get, Add, Delete, and Replace.

**[CertHash]/IssuedBy:** Required. Returns the name of the certificate issuer. This is equivalent to the Issuer member in the CERT\_INFO data structure. Supported operation is Get.

**[CertHash]/IssuedTo:** Required. Returns the name of the certificate subject. This is equivalent to the Subject member in the CERT\_INFO data structure. Supported operation is Get.

**[CertHash]/ValidFrom:** Required. Returns the starting date of the certificate's validity. This is equivalent to the NotBefore member in the CERT\_INFO structure. Supported operation is Get.

**[CertHash]/ValidTo:** Required. Returns the expiration date of the certificate. This is equivalent to the NotAfter member in the CERT\_INFO structure. Supported operation is Get.

**[CertHash]/TemplateName:** Required. Returns the **certificate template** name. Supported operation is Get.

**My/SCEP:** Required for Simple Certificate Enrollment Protocol (SCEP) **certificate enrollment**. The parent node grouping the SCEP certificate related settings. Supported operation is Get.

**My/SCEP/[UniqueID]:** Required for SCEP certificate enrollment. A unique ID to differentiate certificate enrollment requests. Format is node. Supported operations are Get, Add, Replace, and Delete.

**My/SCEP/[UniqueID]/Install:** Required for SCEP certificate enrollment. Parent node to group SCEP certificate install related request. Format is node. Supported operations are Add, Replace, and Delete.

**Note:** Though the children nodes under Install support Replace commands, after the Exec command is sent to the device, the device takes the values that are set when the Exec command is accepted. The node value change that occurs after the Exec command is accepted might not impact the current undergoing enrollment. Implementers can check the Status node value to determine whether the device is not at an unknown stage previous to changing the children node values.

**My/SCEP/[UniqueID]/Install/ServerURL:** Required for SCEP certificate enrollment. Specifies the certificate enrollment server. The server could specify multiple server URLs separated by a semicolon. Value type is string. Supported operations are Get, Add, Delete, and Replace.

**My/SCEP/[UniqueID]/Install/Challenge:** Required for SCEP certificate enrollment. B64 encoded SCEP enrollment challenge. Value type is chr. Supported operations are Get, Add, Replace, and Delete. Challenge will be deleted shortly after the Exec command is accepted.

**My/SCEP/[UniqueID]/Install/EKUMapping:** Required. Specifies the extended key usages and is subject to SCEP server configuration. The list of **object identifiers (OIDs)** are separated by plus sign (+), such as OID1+OID2+OID3. Value type is chr. Supported operations are Get, Add, Delete, and Replace.

**My/SCEP/[UniqueID]/Install/KeyUsage:** Required for enrollment. Specifies the key usage bits (0x80, 0x20, 0xA0, etc.) for the certificate in decimal format. The value MUST have at least the second (0x20) or fourth (0x80) or both bits set. If the value does not have those bits set, configuration will fail. Value type is int. Supported operations are Get, Add, Delete, and Replace.

**My/SCEP/[UniqueID]/Install/SubjectName:** Required. Specifies the subject name. Value type is chr. Supported operations are Get, Add, Delete, and Replace.

**My/SCEP/[UniqueID]/Install/KeyProtection:** Optional. Specifies the location of the private key. Although the **private key** is protected by **trusted platform module (TPM)**, it is not protected with TPM PIN. SCEP enrolled certificate does not support TPM PIN protection. Supported values:

- 1 – the private key is protected by device TPM.
- 2 – the private key is protected by device TPM if the device supports TPM.
- 3 (default) – the private key is only saved in the software KSP.
- 4 – the private key is protected by Microsoft .NET Passport. If this option is specified, the container name MUST be specified, otherwise the enrollment will fail.

Value type is int. Supported operations are Get, Add, Delete, and Replace.

**My/SCEP/[UniqueID]/Install/RetryDelay:** Optional. Specifies the device retry waiting time in minutes when the SCEP server sends the pending status. Default value is 5 and the minimum value is 1. Value type is int. Supported operations are Get, Add, and Delete.

**My/SCEP/[UniqueID]/Install/RetryCount:** Optional. Special to SCEP. Specifies the device retry times when the SCEP server sends pending status. Value type is int. Default value is 3. Max value cannot be larger than 30. If it is larger than 30, the device will use 30. The min value is 0 which means no retry. Supported operations are Get, Add, Delete, and Replace.

**My/SCEP/[UniqueID]/Install/TemplateName:** Optional. OID of certificate template name. Note that this name is typically ignored by the SCEP server; therefore, the MDM server typically does not need to provide it. Value type is chr. Supported operations are Get, Add, and Delete.

**My/SCEP/[UniqueID]/Install/KeyLength:** Required for enrollment. Specifies private key length (RSA). Value type is int. Valid values are 1024, 2048, 4096<2>. Supported operations are Get, Add, Delete, and Replace.

**My/SCEP/[UniqueID]/Install/HashAlgorithm:** Required for enrollment. Hash algorithm family (SHA-1, SHA-2, SHA-3) specified by the MDM server. If multiple hash algorithm families are specified, they MUST be separated with a +. Value type is chr. Get, Add, Delete, and Replace.

**My/SCEP/[UniqueID]/Install/CAThumbprint:** Required. Specifies the root CA thumbprint. It is a 20-byte value of the SHA-1 certificate hash specified as a hexadecimal string value. When client authenticates SCEP server, it checks CA certificate from SCEP server for a match with this certificate. If it does not match, the authentication fails. Value type is chr. Supported operations are Get, Add, Delete, and Replace.

**My/SCEP/[UniqueID]/Install/SubjectAlternativeNames:** Optional. Specifies the subject alternative name. Multiple alternative names can be specified. Each name is the combination of name format+actual name. Refer to the name type definition in MSDN. Each pair is separated by semicolon. For example, multiple subject alternative names are presented in the format

<nameformat1>+<actual name1>;<name format 2>+<actual name2>. Value type is chr. Supported operations are Get, Add, Delete, and Replace.

**My/SCEP/[UniqueID]/Install/ValidPeriod:** Optional. Specifies the units for valid period. Valid values are Days (Default), Months, Years. Value type is chr. Supported operations are Get, Add, Delete, and Replace.

**Note:** The device only sends the MDM server expected certificate validation period (ValidPeriodUnits + ValidPeriod) of the SCEP server as part of certificate enrollment request. How this valid period is used to create the certificate depends on the MDM server.

**My/SCEP/[UniqueID]/Install/ValidPeriodUnits:** Optional. Specifies desired number of units used in validity period and subject to SCEP server configuration. Default is 0. The units are defined in ValidPeriod node. The valid period specified by MDM overwrites the valid period specified in the certificate template. For example, if ValidPeriod is days and ValidPeriodUnits is 30, it means the total valid duration is 30 days. Value type is int. Supported operations are Get, Add, Delete, and Replace.

**Note:** The device only sends the MDM server expected certificate validation period (ValidPeriodUnits + ValidPeriod) of the SCEP server as part of certificate enrollment request. How this valid period is used to create the certificate depends on the MDM server.

**My/SCEP/[UniqueID]/Install/Enroll:** Required. Triggers the device to start the certificate enrollment. The MDM server can later query the device to find out whether the new certificate is added. Value type is null, which means that this node does not contain a value. Supported operation is Exec.

**My/WSTEP/CertThumbprint:** Optional. Returns the current MDM client certificate thumbprint. If renewal succeeds, it shows the renewed certificate thumbprint. If renewal fails or is in progress, it shows the thumbprint of the certificate that needs to be renewed. Value type is chr. Supported operation is Get.

**My/SCEP/[UniqueID]/Status:** Required. Specifies the latest status for the certificate due to enrollment request. Value type is chr. Supported operation is Get. Valid values:

- 1 – Finished successfully.
- 2 – Pending. The device has not finished the action, but has received the SCEP server pending response.
- 32 – Unknown.
- 16 – Action failed.

**My/SCEP/[UniqueID]/ErrorCode:** Optional. The integer value that indicates the HRESULT of the last enrollment error code. Supported operation is Get.

**My/SCEP/UniqueID/CertThumbprint:** Optional. Specifies the current certificate thumbprint if certificate enrollment succeeds. It is a 20-byte value of the SHA-1 certificate hash specified as a hexadecimal string value. Value type is chr. Supported operation is Get.

**My/SCEP/UniqueID/RespondentServerUrl:** Required. Returns the URL of the SCEP server that responded to the enrollment request. Value type is string. Supported operation is Get.

**My/WSTEP:** Required for MDM enrolled device. The parent node that hosts the MDM enrollment client certificate related settings that is enrolled via WSTEP. The nodes under WSTEP are mostly for MDM client certificate renew requests. Value type is node. Supported operation is Get.

**My/WSTEP/Renew:** Optional. The parent node to group renewal related settings. Supported operation is Get.

**My/WSTEP/Renew/ServerURL:** Optional. Specifies the URL of certificate renewal server. If this node does not exist, the client uses the initial discovery URL from enrollment. Supported operations are Add, Get, Delete, and Replace.

**My/WSTEP/Renew/RenewalPeriod:** Optional. The time (in days) to trigger the client to initiate the MDM client certificate renew process before the MDM certificate expires. The MDM server cannot set and update the certificate expiration date. It is recommended that the renew period is set a couple months before the certificate expires to ensure that the certificate gets renewed successfully with data connectivity.

The default value is 42 and the valid values are 1 – 1000. Value type is int. Supported operations are Add, Get, Delete, and Replace.

**Note:** When the renewal schedule is set over SyncML DM commands to ROBOSupport, RenewalPeriod, and RetryInterval, it MUST be wrapped in Atomic commands as specified in [\[MS-MDM\]](#).

**My/WSTEP/Renew/RetryInterval:** Optional. Specifies the retry interval (in days) when the previous renewal failed. The retry schedule stops at the certificate expiration date.

The default value is 7 and the valid values are 1 – 1000. Value type is int. Supported operations are Add, Get, Delete, and Replace.

**Note:** When the renewal schedule is set over SyncML DM commands to ROBOSupport, RenewalPeriod, and RetryInterval, it MUST be wrapped in Atomic commands as specified in [\[MS-MDM\]](#).

**My/WSTEP/Renew/ROBOSupport:** Optional. Notifies the client if the MDM enrollment server supports ROBO auto certificate renewal. Value type is bool. [<3>](#)

**Note:** When the renewal schedule is set over SyncML DM commands to ROBOSupport, RenewalPeriod, and RetryInterval, it MUST be wrapped in Atomic commands as specified in [\[MS-MDM\]](#).

**My/WSTEP/Renew/Status:** Required. Shows the latest action status for this certificate. Value type is int. Supported operation is Get.

Supported values:

- 0 – Not started.
- 1 – Renewal in progress.
- 2 – Renewal succeeded.
- 3 – Renewal failed.

**My/WSTEP/Renew/ErrorCode:** Optional. If certificate renewal fails, this integer value indicates the HRESULT of the last error code during the renewal process. Value type is int. Supported operation is Get.

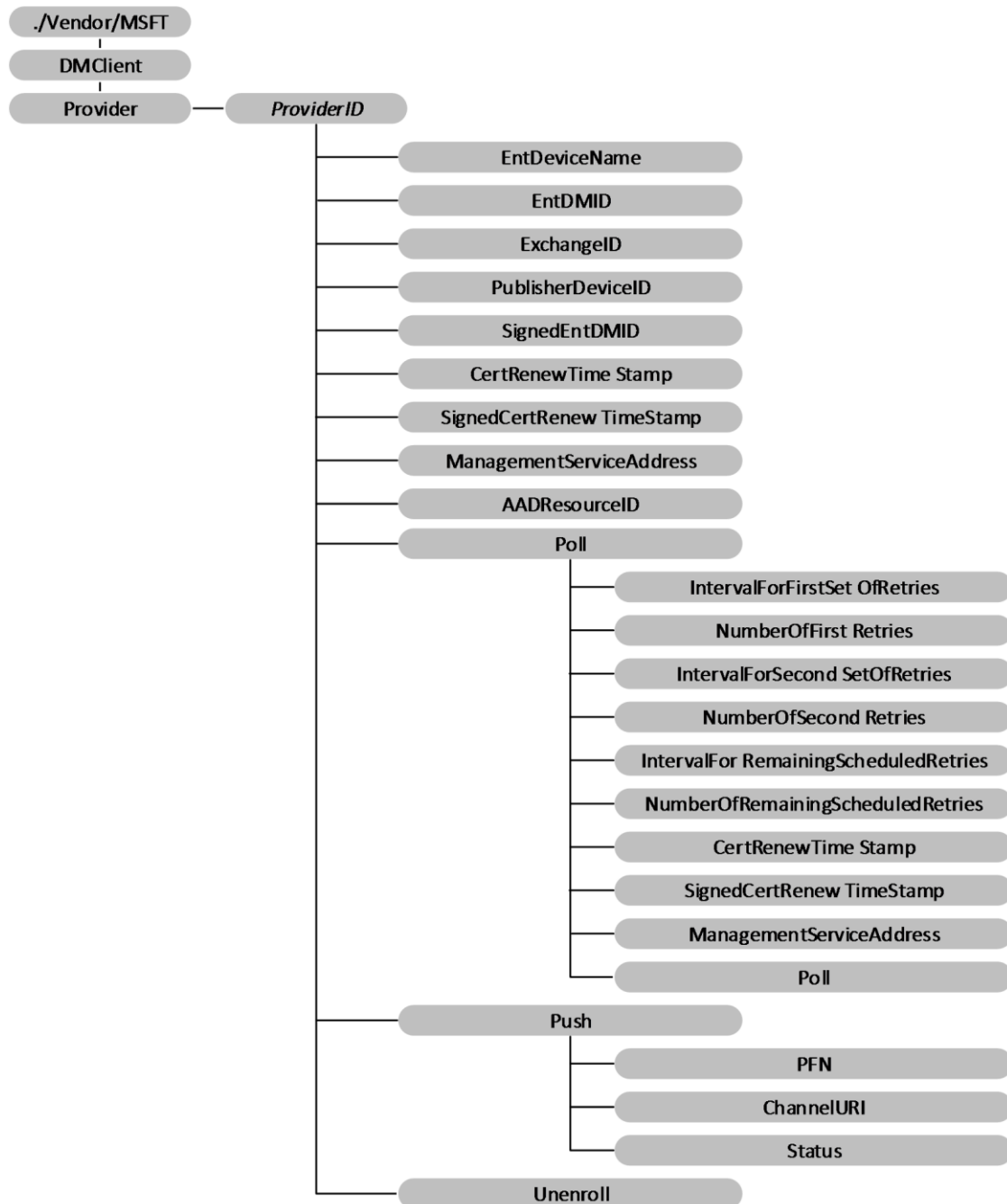
### 2.2.9.3 DMClient Configuration Service Provider

Note: All of the information in this section is subject to change because it applies to an unreleased, preliminary version of the Windows Server operating system, and thus may differ from the final version of the server software when released. All behavior notes that pertain to the unreleased, preliminary version of the Windows Server operating system contain specific references to Windows Server 2016 Technical Preview as an aid to the reader.



The DMClient configuration service provider is used to specify additional enterprise-specific mobile device management configuration settings for identifying the device in the enterprise domain, security mitigation for certificate renewal, and server-triggered enterprise unenrollment.

The following diagram shows the DMClient configuration service provider in tree format.



**Figure 5: The DMClient configuration service provider in tree format**

**Provider:** Required. The root node for all settings that belong to a single management server. Scope is permanent. Supported operation is Get.

**ProviderID:** Optional. This node contains the URI-encoded value of the bootstrapped device management account's Provider ID. Scope is dynamic. As a best practice, use text that doesn't require XML/URI escaping. Supported operations are Get and Add.

**ProviderID /EntDeviceName:** Optional. The character string that contains the user-friendly device name used by the IT admin console. The value is set during the enrollment process by way of the DMClient configuration service provider. It can be retrieved later during an OMA DM session. Supported operations are Get and Add.

**ProviderID/EntDMID:** Optional. The character string that contains the unique enterprise device ID. The value is set by the management server during the enrollment process by way of the DMClient configuration service provider. It can be retrieved later during an OMA DM session. Supported operations are Get and Add.  
Although hardware device IDs are guaranteed to be unique, there is a concern that this is not ultimately enforceable during a DM session. The device ID could be changed through the w7 APPLICATION configuration service provider's USEHWDEVID parm by another management server. So during enterprise bootstrap and enrollment, a new device ID is specified by the enterprise server.

This node is required and must be set by the server before the client certificate renewal is triggered.

**ProviderID/ExchangeID:** Optional. The character string that contains the unique Exchange device ID used by the Outlook account. This is useful for the enterprise management server to correlate and merge records for a device that is managed by exchange and natively managed by a dedicated management server. Supported operation is Get. The following is a Get command sample. Implementers MUST replace "TestMDMServer" with the actual name of the configured Provider ID. The ExchangeID is per user and for AAD enrollments the value depends on the logged in user.

```
<Get>
  <CmdID>12</CmdID>
  <Item>
    <Target>
      <LocURI>./Vendor/MSFT/DMClient/<ProviderID>/TestMDMServer/ExchangeID</LocURI>
    </Target>
  </Item>
</Get>
```

**ProviderID/PublisherDeviceID:** (Only for phones). Optional. The PublisherDeviceID is a device-unique ID created based on the enterprise Publisher ID. Publisher ID is created based on the enterprise application token and enterprise ID via  
. /Vendor/MSFT/EnterpriseAppManagement/<enterprise id>/EnrollmentToken. It is to ensure that for one enterprise, each device has a unique ID associated with it. For the same device, if it has multiple enterprises' applications, each enterprise is identified differently. Supported operation is Get.

**ProviderID/SignedEntDMID:** Optional. The character string that contains the device ID. This node and the nodes CertRenewTimeStamp and SignedCertRenewStamp can be used by the mobile device management server to verify client identity in order to update the registration record after the device certificate is renewed. The device signs the EntDMID with the old client certificate during the certificate renewal process and saves the signature locally. Supported operation is Get.

**ProviderID/CertRenewTimeStamp:** Optional. The time in OMA DM standard time format. This node and the SignedCertRenewTimeStamp node are designed to reduce the risk of the certificate being used by another device. The device records the time that the new certificate was created. Supported operation is Get.

**ProviderID/ManagementServiceAddress:** Required. The character string that contains the device management server address. It can be updated during an OMA DM session by the management server to allow the server to load balance to another server in situations where too many devices are connected to the server.

The DMClient configuration service provider saves the address to the same location as the w7 and DMS configuration service providers to ensure the management client has a single place to retrieve the current server address. The initial value for this node is the same server address value as bootstrapped via the w7 APPLICATION configuration service provider. Supported operations are Get and Replace.

**ProviderID/UPN:** Optional. Allows the management server to update the User Principal Name (UPN) of the enrolled user. This is useful in scenarios where the user email address changes in the identity system, or in the scenario where the user enters an invalid UPN during enrollment, and fixes the UPN during federated authentication. The UPN will be recorded and the UX will reflect the updated UPN. Supported operations are Get, Replace, and Delete.

**ProviderID/HelpPhoneNumber:** Optional. The character string that allows the user experience to include a customized help phone number that the end user will be able to view and use if they need help or support. Supported operations are Get, Replace, and Delete.

**ProviderID/HelpWebsite:** Optional. The character string that allows the user experience to include a customized help website that the end user will be able to view and use if they need help or support. Supported operations are Get, Replace, and Delete.

**ProviderID/HelpEmailAddress:** Optional. The character string that allows the user experience to include a customized help email address that the end user will be able to view and use if they need help or support. Supported operations are Get, Replace, and Delete.

**ProviderID/RequireMessageSigning:** Optional. Boolean type. Primarily used for SSL bridging mode where firewalls and proxies are deployed and where device client identity is required. When enabled, every SyncML message from the device will carry an additional HTTP header named MDM-Signature. This header contains BASE64-encoded Cryptographic Message Syntax using a Detached Signature of the complete SyncML message SHA-2 (inclusive of the SyncHdr and SyncBody). Signing is performed using the private key of the management session certificate that was enrolled as part of the MDE2 enrollment process. The device's public key and PKCS9 UTC signing time stamp are included as part of the authenticated attributes in the signature.

Default value is false, where the device management client does not include authentication information in the management session HTTP header. Optionally set to true, where client authentication information is provided in the management session HTTP header.

When enabled, the MDM server validates the signature and the timestamp using the device identify certificate enrolled as part of MDE2, ensure the certificate and time are valid, and verify that the signature is trusted by the MDM server. Supported operations are Get, Replace, and Delete

**ProviderID/MaxSyncApplicationVersion:** Optional. Allows the management server to set the maximum current version of the management session protocol. A management server can update this if it detects a newer MaxSyncApplicationVersion that the client and server support. All changes to the MaxSyncApplicationVersion go into effect on the next session. Supported operations are Get and Add.

**ProviderID/MaxSyncApplicationVersion:** Optional. Returns a character string that is the highest supported management session protocol version supported by the current platform. Supported operation is get

**ProviderID/AADResourceID:** Optional. This is the ResourceID used when requesting the user token from the OMA DM session for Azure Active Directory enrollments (AAD Join or Add Accounts). The

token is audience specific, which allows for different service principals (enrollment vs. device management). It can be an application ID or the endpoint that you are trying to access.

**ProviderID/Poll:** Optional. Polling schedules MUST utilize the DMClient CSP. Supported operations are Get and Add.

There are three schedules managed under the Poll node which enable a rich polling schedule experience to provide greater flexibility in managing the way in which devices poll the management server. There are a variety of ways in which polling schedules are set. If an invalid polling configuration is set, the device will correct or remove the schedules in order to restore the polling schedules back to a valid configuration.

If there is no infinite schedule set, then a 24-hour schedule is created and scheduled to launch in the maintenance window.

**Valid poll schedule: sigmoid polling schedule with infinite schedule (Recommended)**

Schedule name	Schedule set by the server	Actual value queried on device
IntervalForFirstSetOfRetries	15	15
NumberOfFirstRetries	5	5
IntervalForSecondSetOfRetries	60	60
NumberOfSecondRetries	10	10
IntervalForRemainingScheduledRetries	1440	1440
NumberOfRemainingScheduledRetries	0	0

**Valid poll schedule: initial enrollment only [no infinite schedule]**

Schedule name	Schedule set by the server	Actual value queried on device
IntervalForFirstSetOfRetries	15	15
NumberOfFirstRetries	5	5
IntervalForSecondSetOfRetries	60	60
NumberOfSecondRetries	10	10
IntervalForRemainingScheduledRetries	0	0
NumberOfRemainingScheduledRetries	0	0

**Invalid poll schedule: disable all poll schedules**

**Note:** Disabling poll schedules results in UNDEFINED behavior and enrollment MAY fail if poll schedules are all set to zero.

Schedule name	Schedule set by the server	Actual value queried on device
IntervalForFirstSetOfRetries	0	0
NumberOfFirstRetries	0	0
IntervalForSecondSetOfRetries	0	0
NumberOfSecondRetries	0	0
IntervalForRemainingScheduledRetries	0	0
NumberOfRemainingScheduledRetries	0	0

**Invalid poll schedule: two infinite schedules**

Schedule name	Schedule set by server	Actual schedule set on device	Actual experience
IntervalForFirstSetOfRetries	15	15	Device polls
NumberOfFirstRetries	5	5	Device polls
IntervalForSecondSetOfRetries	1440	1440	Device polls the server once in 24 hours
NumberOfSecondRetries	0	0	Device polls the server once in 24 hours
IntervalForRemainingScheduledRetries	1440	0	Third schedule is disabled
NumberOfRemainingScheduledRetries	0	0	Third schedule is disabled

When using the DMClient CSP to configure polling schedule parameters, the server must not set all 6 polling parameters to 0 or set all 3 number of retries nodes to 0 because it will cause a configuration failure.

**ProviderID/Poll/IntervalForFirstSetOfRetries:** Optional. The waiting time (in minutes) for the initial set of retries as specified by the number of retries in <ProviderID>/Poll/NumberOfFirstRetries. If IntervalForFirstSetOfRetries is not set, then the default value is used. The default value is 15. If the value is set to 0, this schedule is disabled. The supported operations are Get and Replace.

**ProviderID/Poll/NumberOfFirstRetries:** Optional. The number of times the device management client can retry to connect to the server when the client is initially configured or enrolled to communicate with the server. If the value is set to 0 and the IntervalForFirstSetOfRetries value is not 0, then the schedule will be set to repeat an infinite number of times and second set will not set in this case. The default value is 10. The supported operations are Get and Replace.

The first set of retries is intended to give the management server some buffered time to be ready to send policies and settings configuration to the device. It is best practice to not have the first set

of retries go beyond a few hours. The server MUST NOT set NumberOfFirstRetries to 0. RemainingScheduledRetries is used for the long run device polling schedule.

**ProviderID/Poll/IntervalForSecondSetOfRetries:** Optional. The waiting time (in minutes) for the second set of retries as specified by the number of retries in /<ProviderID>/Poll/NumberOfSecondRetries. Default value is 0. If this value is set to zero, then this schedule is disabled. The supported operations are Get and Replace.

**ProviderID/Poll/NumberOfSecondRetries:** Optional. The number of times the device management client can retry a second round of connecting to the server when the client is initially configured/enrolled to communicate with the server. Default value is 0. If the value is set to 0 and IntervalForSecondSetOfRetries is not set to 0 AND the first set of retries is not set as infinite retries, then the schedule repeats an infinite number of times. However, if the first set of retries is set at infinite, then this schedule is disabled. Supported operations are Get and Replace.

IntervalForSecondSetOfRetries SHOULD be longer than IntervalForFirstSetOfRetries. The total duration of retries can be more than 24 hours. RemainingScheduledRetries is used for the long run device polling schedule.

**ProviderID/Poll/IntervalForRemainingScheduledRetries:** Optional. The waiting time (in minutes) for the initial set of retries as specified by the number of retries in /<ProviderID>/Poll/NumberOfRemainingScheduledRetries. Default value is 0. If IntervalForRemainingScheduledRetries is set to 0, then this schedule is disabled. Supported operations are Get and Replace.

**ProviderID/Poll/NumberOfRemainingScheduledRetries:** Optional. The number of times the device management client can retry connecting to the server when the client is initially configured/enrolled to communicate with the server. Default value is 0. If the value is set to 0 and IntervalForRemainingScheduledRetries AND the first and second set of retries are not set as infinite retries, then the schedule will be set to repeat for an infinite number of times. However, if either or both of the first and second set of retries are set as infinite, then this schedule will be disabled. Supported operations are Get and Replace.

RemainingScheduledRetries is used for the long run device polling schedule. IntervalForRemainingScheduledRetries MUST NOT be smaller than 1440 minutes (24 hours).

**ProviderID/Poll/PollOnLogin:** Optional. Allows the IT admin to require the device to start a management session on any user login, regardless of whether the user has previously logged in. Login is not the same as device unlock. Default value is 0, where polling is disabled on first login. Supported values are 0 or 1. Supported operations are Add, Get and Replace.

**ProviderID/Poll/AllUsersPollOnFirstLogin:** Optional. Allows the IT admin to require the device to start a management session on first user login for all NT users. A session is only kicked off the first time a user logs in to the system; subsequent logins will not trigger an MDM session. Login is not the same as device unlock. Default value is 0, where polling is disabled on first login. Supported values are 0 or 1. Supported operations are Add, Get and Replace.

**ProviderID/Push:** Optional. Not configurable during WAP Provisioning XML. If removed, DM sessions triggered by Push will no longer be supported. Supported operations are Add and Delete.

**ProviderID/Push/PFN:** Required. A string used to register a device for push notifications. The server MUST use the same PFN as the devices it is managing. Supported operations are Add, Get, and Replace.

**ProviderID/Push/ChannelURI:** Required. A string that contains the channel that the WNS client has negotiated for the OMA DM client on the device based on the PFN that was provided. If no valid PFN is currently set, ChannelURI will return null. Supported operation is Get.

**ProviderID/Push/Status:** Required. An integer that maps to a known error state or condition on the system. The status error mapping is listed below. Supported operation is Get.

Status	Description
0	Success!
1	Failure: invalid PFN
2	Failure: invalid or expired device authentication with MSA
3	Failure: WNS client registration failed due to an invalid or revoked PFN
4	Failure: no Channel URI assigned
5	Failure: Channel URI has expired
6	Failure: Channel URI failed to be revoked
7	Failure: Push notification received, but unable to establish an OMA-DM session due to power or connectivity limitations.
8	Push Not Available On the SKU

**ProviderID/Unenroll:** Required. The node accepts unenrollment requests by way of the OMA DM Exec command and calls the enrollment client to unenroll the device from the management server whose provider ID is specified in the <Data> tag under the <Item> element. Scope is permanent. Supported operations are Get and Exec. Note that <LocURI>/Vendor/MSFT/DMClient/Unenroll</LocURI> is supported for backward compatibility.

The following SyncML shows how to remotely unenroll the device. Note that this command can be inserted in the general DM packages sent from the server to the device.

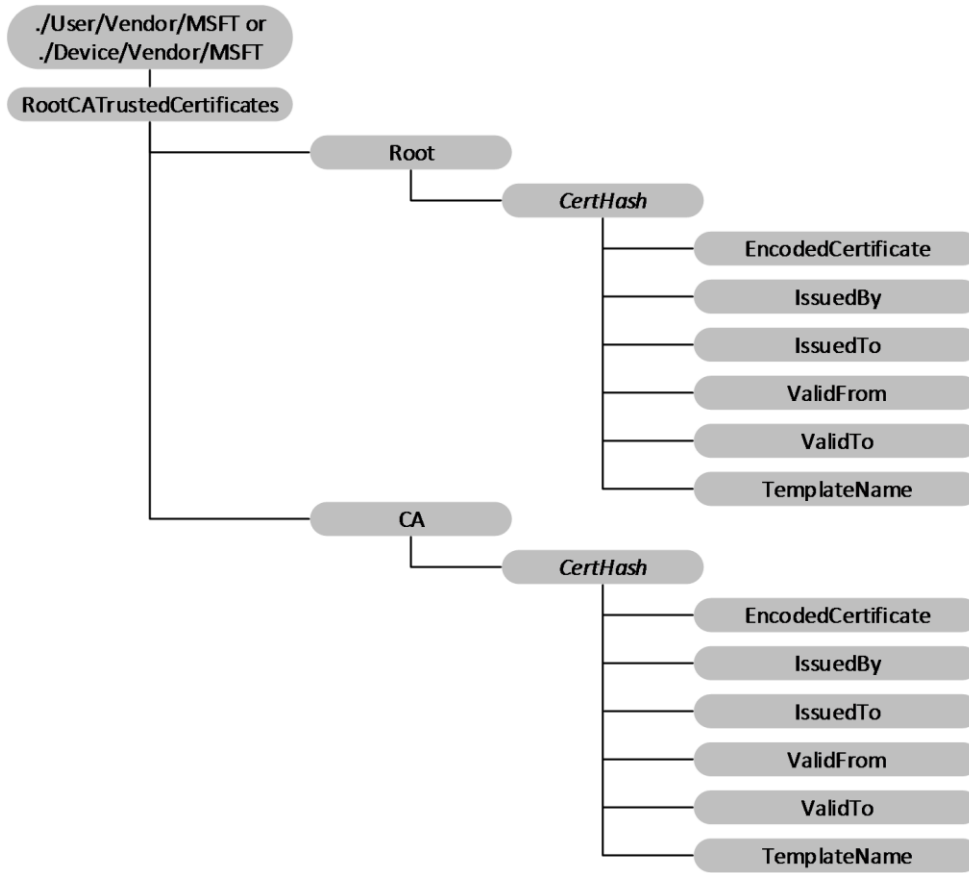
```
<Exec>
  <CmdID>2</CmdID>
  <Item>
    <Target>
      <LocURI>./Vendor/MSFT/DMClient/<ProviderID>/TestMDMServer/Unenroll</LocURI>
    </Target>
    <Meta>
      <Format xmlns="syncml:metinf">chr</Format>
    </Meta>
    <Data>TestMDMServer</Data>
    <!-- Data Field in Threshold is now IGNORED
node -->
  </Item>
</Exec>
```

#### 2.2.9.4 RootCATrustedCertificate Configuration Service Provider

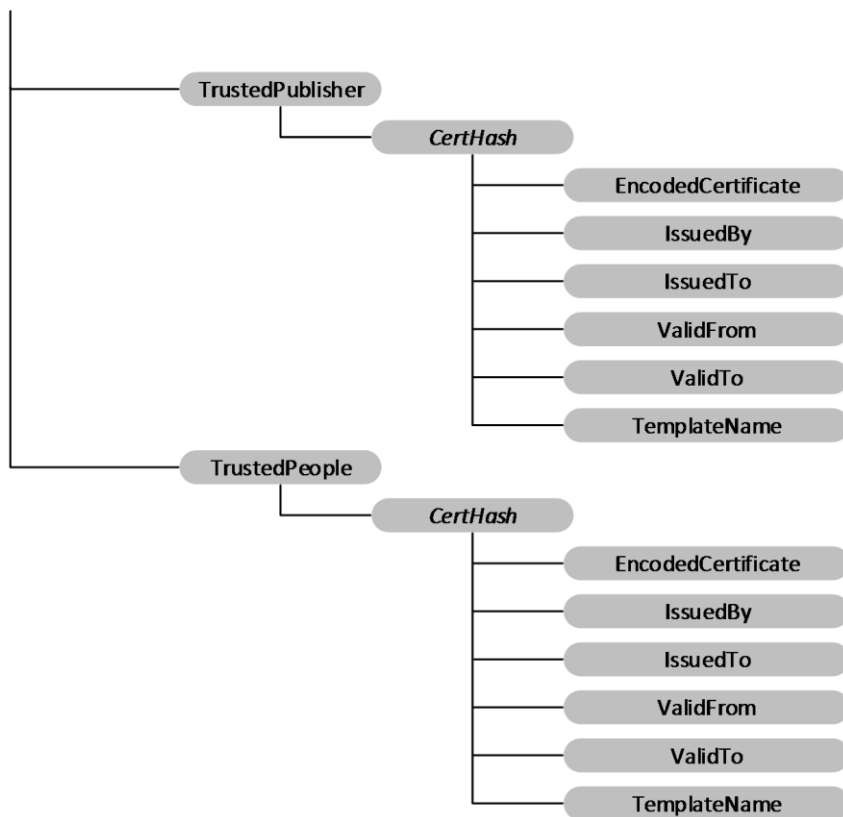
Note: All of the information in this section is subject to change because it applies to an unreleased, preliminary version of the Windows Server operating system, and thus may differ from the final version of the server software when released. All behavior notes that pertain to the unreleased, preliminary version of the Windows Server operating system contain specific references to Windows Server 2016 Technical Preview as an aid to the reader.

The RootCATrustedCertificate configuration service provider enables the enterprise to set the Root Certificate Authority (CA) certificates.

The following image shows the RootCACertificate configuration service provider in tree format.







**Figure 6: The RootCACertificate configuration service provider in tree format**

**Device or User:** The root node for the RootCATrustedCertificates configuration service provider. For device certificates, use `./Device/Vendor/MSFT` path and for user certificates use `./User/Vendor/MSFT` path.

**RootCATrustedCertificates/Root:** Node for Root (self-signed) certificates.

**RootCATrustedCertificates/CA:** The node for CA certificates.

**RootCATrustedCertificates/TrustedPublisher:** The node for trusted publisher certificates.

**RootCATrustedCertificates/TrustedPeople:** The node for trusted people certificates.

**/CertHash:** Defines the SHA-1 hash for the certificate. The 20-byte value of the SHA-1 certificate hash is specified as a hexadecimal string value. The supported operations are Add, Delete, and Replace.

**/EncodedCertificate:** Specifies the X.509 certificate as a base64-encoded string. The base64 string value cannot include extra formatting characters such as embedded linefeeds. The supported operations are Add, Get, Delete, and Replace.

**/IssuedBy:** Returns the name of the certificate issuer. This is equivalent to the Issuer member in the CERT\_INFO data structure. The only supported operation is Get.

**/IssuedTo:** Returns the name of the certificate subject. This is equivalent to the Subject member in the CERT\_INFO data structure. The only supported operation is Get.

**/ValidFrom:** Returns the starting date of the certificate's validity. This is equivalent to the NotBefore member in the CERT\_INFO structure. The only supported operation is Get.

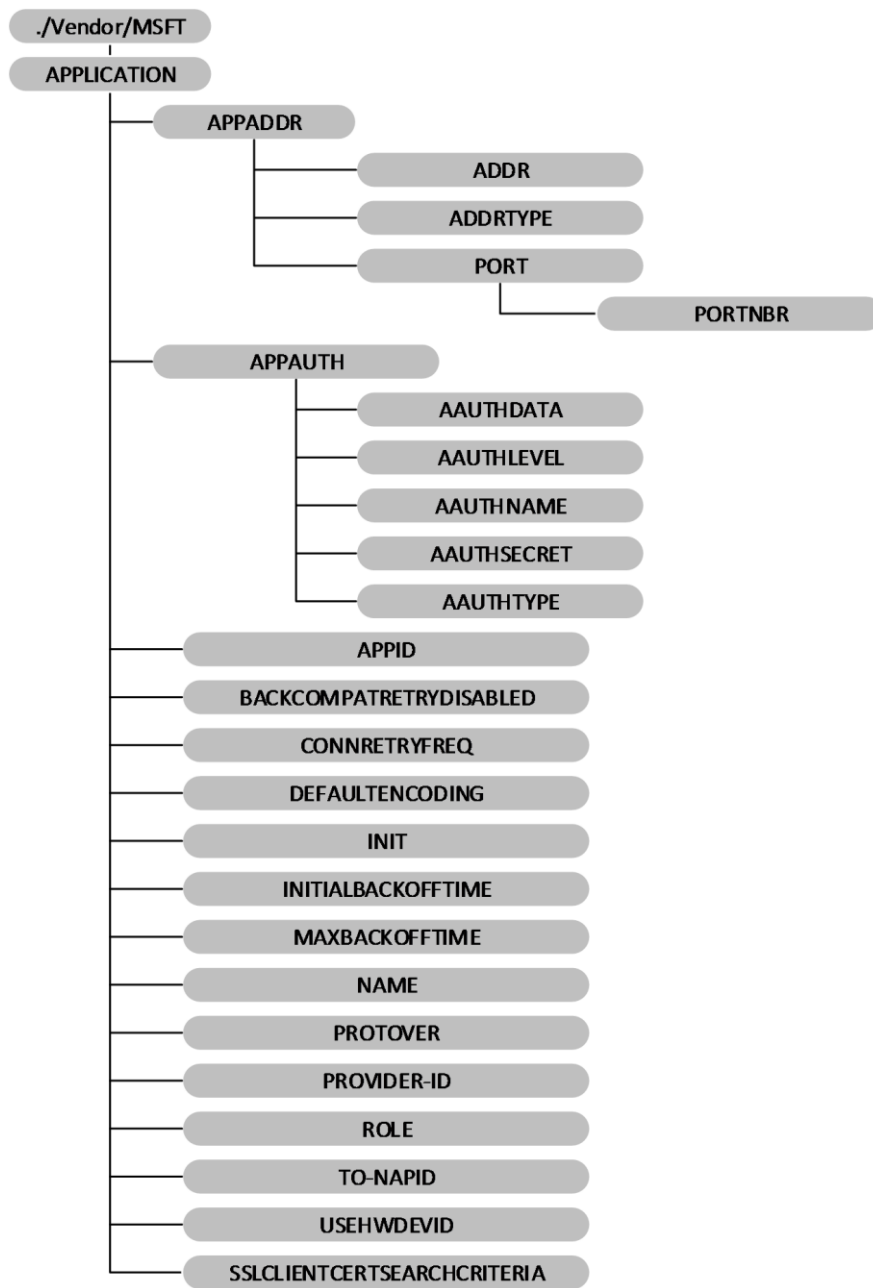
**/ValidTo:** Returns the expiration date of the certificate. This is equivalent to the NotAfter member in the CERT\_INFO structure. The only supported operation is Get.

**/TemplateName:** Returns the certificate template name. The only supported operation is Get.

### **2.2.9.5 w7 APPLICATION Configuration Service Provider**

The APPLICATION configuration service provider that has an APPID of w7 is used for bootstrapping a device with an OMA DM account. Although this configuration service provider is used to set up an OMA DM account, it is managed over OMA Client Provisioning.

The following diagram shows the w7 APPLICATION configuration service provider in tree format.



**Figure 7: The w7 APPLICATION configuration service provider in tree format**

**APPADDR:** This characteristic is used in the w7 APPLICATION characteristic to specify the DM server address.

**APPADDR/ADDR:** Optional. The ADDR parameter is used in the APPADDR characteristic to get or set the address of the OMA DM server. This parameter takes a string value.

**APPADDR/ADDRTYPE:** Optional. The ADDRTYPE parameter is used in the APPADDR Characteristic to get or set the format of the ADDR parameter. This parameter takes a string value. In OMA DM XML, if there are multiple instances of this parameter, the first valid parameter value is used.

**APPADDR/PORT:** This characteristic is used in the APPADDR characteristic to specify port information.

**APPADDR/PORT/PORTNBR:** Required. The PORTNBR parameter is used in the PORT characteristic to get or set the number of the port to connect to. This parameter takes a numeric value in string format.

**APPAUTH:** This characteristic is used in the w7 APPLICATION characteristic to specify authentication information.

**APPAUTH/AAUTHDATA:** Optional. The AAUTHDATA parameter is used in the APPAUTH characteristic to get or set additional data used in authentication. This parameter is used to convey the nonce for digest authentication type. This parameter takes a string value. The value of this parameter is a base64-encoded string in the form of a series of bytes. Note that if the AAUTHTYPE is DIGEST, this is used as a nonce value in the **MD5 hash** calculation, and the octal form of the binary data is used to calculate the hash at the server side and device side.

**APPAUTH/AAUTHLEVEL:** Required. The AAUTHLEVEL parameter is used in the APPAUTH characteristic to indicate whether credentials are for server authentication or client authentication. This parameter takes a string value. Implementers can set this value.

Valid values:

- APPSRV - Specifies that the client authenticates itself to the OMA DM Server at the DM protocol level.
- CLIENT - Specifies that the server authenticates itself to the OMA DM Client at the DM protocol level.

**APPAUTH/AAUTHNAME:** Optional. The AAUTHNAME parameter is used in the APPAUTH characteristic to differentiate OMA DM client names. This parameter takes a string value. Implementers can set this value.

**APPAUTH/AAUTHSECRET:** Required. The AAUTHSECRET parameter is used in the APPAUTH characteristic to get or set the authentication secret used to authenticate the user. This parameter takes a string value.

**APPAUTH/AAUTHTYPE:** Optional. The AAUTHTYPE parameter of the APPAUTH characteristic is used to get or set the method of authentication. This parameter takes a string value.

Valid values:

- BASIC - Specifies the SyncML DM 'syncml:auth-basic' authentication type.
- DIGEST - Specifies the SyncML DM 'syncml:auth-md5' authentication type.

When AAUTHLEVEL is CLIENT, AAUTHTYPE must be DIGEST. When AAUTHLEVEL is APPSRV, AAUTHTYPE can be BASIC or DIGEST.

**APPID:** Required. The APPID parameter is used in the APPLICATION characteristic to differentiate the types of available application services and protocols. This parameter takes a string value. Implementers can get or set this value. The only valid value to configure the OMA Client Provisioning bootstrap APPID is w7.

**BACKCOMPATRETRYDISABLED:** Optional. The BACKCOMPATRETRYDISABLED parameter is used in the APPLICATION characteristic to specify whether to retry resending a package with an older protocol version (for example, 1.1) in the SyncHdr (not including the first time).

**Note** This parameter does not contain a value. The existence of this parameter means backward compatibility retry is disabled. If the parameter is missing, it means backward compatibility retry is enabled.

**CONNRETRYFREQ:** Optional. The CONNRETRYFREQ parameter is used in the APPLICATION characteristic to specify how many retries the device management client performs when there are Connection Manager-level or WinInet-level errors. This parameter takes a numeric value in string format. The default value is "3". Implementers can set this parameter.

**DEFAULTENCODING:** Optional. The DEFAULTENCODING parameter is used in the APPLICATION characteristic to specify whether the device management client uses WBXML or XML for the DM package when communicating with the server. Implementers can get or set this parameter.

The valid values are:

- application/vnd.syncml.dm+xml (Default)
- application/vnd.syncml.dm+wbxml

**INIT:** Optional. The INIT parameter is used in the APPLICATION characteristic to indicate that the management server wants the client to initiate a management session immediately after settings approval. If the current w7 APPLICATION document will be put in ROM, the INIT parameter must not be present.

**Note:** This parameter is only for mobile operators and MDM servers that try to use this will fail. This parameter forces the device to attempt to connect with the OMA DM server. The connection attempt fails if the XML is set during the coldinit phase. A common cause of this failure is that immediately after coldinit is finished the radio is not yet ready.

**INITIALBACKOFFTIME:** Optional. The INITIALBACKOFFTIME parameter is used in the APPLICATION characteristic to specify the initial wait time in milliseconds when the device management client retries for the first time. The wait time grows exponentially. This parameter takes a numeric value in string format. The default value is "16000". Implementers can get or set this parameter.

**MAXBACKOFFTIME:** Optional. The MAXBACKOFFTIME parameter is used in the APPLICATION characteristic to specify the maximum number of milliseconds to sleep after package-sending failure. This parameter takes a numeric value in string format. The default value is "86400000". Implementers can set this parameter.

**NAME:** Optional. The NAME parameter is used in the APPLICATION characteristic to specify a user readable application identity. This parameter is used to define part of the registry path for the APPLICATION parameters. Implementers can set this parameter. The NAME parameter can be a string or null (no value). If no value is specified, the registry location will default to <unnamed>.

**PROTOVER:** Optional. The PROTOVER parameter is used in the APPLICATION characteristic to specify the OMA DM Protocol version the server supports. No default value is assumed. The protocol version set by this node will match the protocol version that the device management client reports to the server in SyncHdr in package 1. If this node is not specified when adding a DM server account, the latest DM protocol version that the client supports is used. This is a Microsoft custom parameter. Implementers can set this parameter.

Possible values:

- 1.1
- 1.2

**PROVIDER-ID:** Optional. The PROVIDER-ID parameter is used in the APPLICATION characteristic to differentiate OMA DM servers. It specifies the server identifier for a management server used in the current management session. This parameter takes a string value. Implementers can set this parameter.

**ROLE:** Optional. The ROLE parameter is used in the APPLICATION characteristic to specify the security application chamber that the DM session runs with when communicating with the DM server. The only supported roles are 8 (mobile operator) and 32 (enterprise). If this parameter is not present, the mobile operator role is assumed. The enterprise role can only be set by the enterprise enrollment client. The enterprise client cannot set the mobile operator role. This is a Microsoft custom parameter. This parameter takes a numeric value in string format. Implementers can get or set this parameter.

**TO-NAPID:** Optional. The TO-NAPID parameter is used in the APPLICATION characteristic to specify the Network Access Point the client will use to connect to the OMA DM server. If multiple TO-NAPID parameters are specified, only the first TO-NAPID value will be stored. This parameter takes a string value. Implementers can set this parameter.

**USEHWDEVID:** Optional. The USEHWDEVID parameter is used in the APPLICATION characteristic to specify use of device hardware identification. It does not have a value.

If the parameter is not present, the default behavior is to use an application-specific GUID rather than the hardware device ID.

If the parameter is present, the hardware device ID will be provided at the ./DevInfo/DevID node and in the Source LocURI for the DM package sent to the server. International Mobile Subscriber Identity (IMEI) is returned for a GSM device.

**SSLCLIENTCERTSEARCHCRITERIA:** Optional. The SSLCLIENTCERTSEARCHCRITERIA parameter is used in the APPLICATION characteristic to specify the client certificate search criteria. This parameter supports search by subject attribute and certificate stores. If any other criteria are provided, it is ignored.

The string is a concatenation of name/value pairs, each member of the pair delimited by the "&" character. The name and values are delimited by the "=" character. If there are multiple values, each value is delimited by the Unicode character "U+F000". If the name or value contains characters not in the UNRESERVED set (as specified in RFC2396), then those characters are URI-escaped according to the RFC.

The supported names are Subject and Stores; wildcard certificate search is not supported.

Stores specifies which certificate stores the device management client will search to find the SSL client certificate. The valid store value is My%5CUser. The store name is not case-sensitive.

**Note** %EF%80%80 is the UTF8-encoded character U+F000.

Subject specifies the certificate to search for. For example, to specify a certificate with a particular Subject attribute ("CN=Tester,O=Microsoft"), implementers can use the following:

```
<parm name="SSLCLIENTCERTSEARCHCRITERIA"  
  value="Subject=CN%3DTester,O%3DMicrosoft&amp;Stores=My%5CUser" />
```

## 2.2.9.6 OSEdition Enumeration

This section provides the product enumerations for the OSEdition element.

```
#define PRODUCT_UNDEFINED 0x00000000  
#define PRODUCT_ULTIMATE 0x00000001  
#define PRODUCT_HOME_BASIC 0x00000002  
#define PRODUCT_HOME_PREMIUM 0x00000003  
#define PRODUCT_ENTERPRISE 0x00000004  
#define PRODUCT_HOME_BASIC_N 0x00000005  
#define PRODUCT_BUSINESS 0x00000006  
#define PRODUCT_STANDARD_SERVER 0x00000007  
#define PRODUCT_DATACENTER_SERVER 0x00000008  
#define PRODUCT_SMALLBUSINESS_SERVER 0x00000009  
#define PRODUCT_ENTERPRISE_SERVER 0x0000000A  
#define PRODUCT_STARTER 0x0000000B  
#define PRODUCT_DATACENTER_SERVER_CORE 0x0000000C
```

```

#define PRODUCT_STANDARD_SERVER_CORE 0x0000000D
#define PRODUCT_ENTERPRISE_SERVER_CORE 0x0000000E
#define PRODUCT_ENTERPRISE_SERVER_IA64 0x0000000F
#define PRODUCT_BUSINESS_N 0x00000010
#define PRODUCT_WEB_SERVER 0x00000011
#define PRODUCT_CLUSTER_SERVER 0x00000012
#define PRODUCT_HOME_SERVER 0x00000013
#define PRODUCT_STORAGE_EXPRESS_SERVER 0x00000014
#define PRODUCT_STORAGE_STANDARD_SERVER 0x00000015
#define PRODUCT_STORAGE_WORKGROUP_SERVER 0x00000016
#define PRODUCT_STORAGE_ENTERPRISE_SERVER 0x00000017
#define PRODUCT_SERVER_FOR_SMALLBUSINESS 0x00000018
#define PRODUCT_SMALLBUSINESS_SERVER_PREMIUM 0x00000019
#define PRODUCT_HOME_PREMIUM_N 0x0000001A
#define PRODUCT_ENTERPRISE_N 0x0000001B
#define PRODUCT_ULTIMATE_N 0x0000001C
#define PRODUCT_WEB_SERVER_CORE 0x0000001D
#define PRODUCT_MEDIUMBUSINESS_SERVER_MANAGEMENT 0x0000001E
#define PRODUCT_MEDIUMBUSINESS_SERVER_SECURITY 0x0000001F
#define PRODUCT_MEDIUMBUSINESS_SERVER_MESSAGING 0x00000020
#define PRODUCT_SERVER_FOUNDATION 0x00000021
#define PRODUCT_HOME_PREMIUM_SERVER 0x00000022
#define PRODUCT_SERVER_FOR_SMALLBUSINESS_V 0x00000023
#define PRODUCT_STANDARD_SERVER_V 0x00000024
#define PRODUCT_DATACENTER_SERVER_V 0x00000025
#define PRODUCT_ENTERPRISE_SERVER_V 0x00000026
#define PRODUCT_DATACENTER_SERVER_CORE_V 0x00000027
#define PRODUCT_STANDARD_SERVER_CORE_V 0x00000028
#define PRODUCT_ENTERPRISE_SERVER_CORE_V 0x00000029
#define PRODUCT_HYPERV 0x0000002A
#define PRODUCT_STORAGE_EXPRESS_SERVER_CORE 0x0000002B
#define PRODUCT_STORAGE_STANDARD_SERVER_CORE 0x0000002C
#define PRODUCT_STORAGE_WORKGROUP_SERVER_CORE 0x0000002D
#define PRODUCT_STORAGE_ENTERPRISE_SERVER_CORE 0x0000002E
#define PRODUCT_STARTER_N 0x0000002F
#define PRODUCT_PROFESSIONAL 0x00000030
#define PRODUCT_PROFESSIONAL_N 0x00000031
#define PRODUCT_SB_SOLUTION_SERVER 0x00000032
#define PRODUCT_SERVER_FOR_SB_SOLUTIONS 0x00000033
#define PRODUCT_STANDARD_SERVER_SOLUTIONS 0x00000034
#define PRODUCT_STANDARD_SERVER_SOLUTIONS_CORE 0x00000035
#define PRODUCT_SB_SOLUTION_SERVER_EM 0x00000036
#define PRODUCT_SERVER_FOR_SB_SOLUTIONS_EM 0x00000037
#define PRODUCT_SOLUTION_EMBEDDED_SERVER 0x00000038
#define PRODUCT_SOLUTION_EMBEDDED_SERVER_CORE 0x00000039
#define PRODUCT_ESSENTIALBUSINESS_SERVER_MGMT 0x0000003B
#define PRODUCT_ESSENTIALBUSINESS_SERVER_ADDL 0x0000003C
#define PRODUCT_ESSENTIALBUSINESS_SERVER_MGMTSVC 0x0000003D
#define PRODUCT_ESSENTIALBUSINESS_SERVER_ADDLSVC 0x0000003E
#define PRODUCT_SMALLBUSINESS_SERVER_PREMIUM_CORE 0x0000003F
#define PRODUCT_CLUSTER_SERVER_V 0x00000040
#define PRODUCT_EMBEDDED 0x00000041
#define PRODUCT_STARTER_E 0x00000042
#define PRODUCT_HOME_BASIC_E 0x00000043
#define PRODUCT_HOME_PREMIUM_E 0x00000044
#define PRODUCT_PROFESSIONAL_E 0x00000045
#define PRODUCT_ENTERPRISE_E 0x00000046
#define PRODUCT_ULTIMATE_E 0x00000047
#define PRODUCT_ENTERPRISE_EVALUATION 0x00000048
#define PRODUCT_MULTIPoint_STANDARD_SERVER 0x0000004C
#define PRODUCT_MULTIPoint_PREMIUM_SERVER 0x0000004D
#define PRODUCT_STANDARD_EVALUATION_SERVER 0x0000004F
#define PRODUCT_DATACENTER_EVALUATION_SERVER 0x00000050
#define PRODUCT_ENTERPRISE_N_EVALUATION 0x00000054
#define PRODUCT_EMBEDDED_AUTOMOTIVE 0x00000055
#define PRODUCT_EMBEDDED_INDUSTRY_A 0x00000056
#define PRODUCT_THINPC 0x00000057
#define PRODUCT_EMBEDDED_A 0x00000058
#define PRODUCT_EMBEDDED_INDUSTRY 0x00000059

```

```

#define PRODUCT_EMBEDDED_E 0x0000005A
#define PRODUCT_EMBEDDED_INDUSTRY_E 0x0000005B
#define PRODUCT_EMBEDDED_INDUSTRY_A_E 0x0000005C
#define PRODUCT_STORAGE_WORKGROUPEVALUATION_SERVER 0x0000005F
#define PRODUCT_STORAGE_STANDARD_EVALUATION_SERVER 0x00000060
#define PRODUCT_CORE_ARM 0x00000061
#define PRODUCT_CORE_N 0x00000062
#define PRODUCT_CORE_COUNTRYSPECIFIC 0x00000063
#define PRODUCT_CORE_SINGLELANGUAGE 0x00000064
#define PRODUCT_CORE 0x00000065
#define PRODUCT_PROFESSIONAL_WMC 0x00000067
#define PRODUCT_MOBILE_CORE 0x00000068
#define PRODUCT_EMBEDDED_INDUSTRY_EVAL 0x00000069
#define PRODUCT_EMBEDDED_INDUSTRY_E_EVAL 0x0000006A
#define PRODUCT_EMBEDDED_EVAL 0x0000006B
#define PRODUCT_EMBEDDED_E_EVAL 0x0000006C
#define PRODUCT_NANO_SERVER 0x0000006D
#define PRODUCT_CLOUD_STORAGE_SERVER 0x0000006E
#define PRODUCT_CORE_CONNECTED 0x0000006F
#define PRODUCT_PROFESSIONAL_STUDENT 0x00000070
#define PRODUCT_CORE_CONNECTED_N 0x00000071
#define PRODUCT_PROFESSIONAL_STUDENT_N 0x00000072
#define PRODUCT_CORE_CONNECTED_SINGLELANGUAGE 0x00000073
#define PRODUCT_CORE_CONNECTED_COUNTRYSPECIFIC 0x00000074
#define PRODUCT_CONNECTED_CAR 0x00000075
#define PRODUCT_INDUSTRY_HANDHELD 0x00000076
#define PRODUCT_PPI_PRO 0x00000077
#define PRODUCT_ARM64_SERVER 0x00000078
#define PRODUCT_EDUCATION 0x00000079
#define PRODUCT_EDUCATION_N 0x0000007A
#define PRODUCT_IOTUAP 0x0000007B
#define PRODUCT_CLOUD_HOST_INFRASTRUCTURE_SERVER 0x0000007C
#define PRODUCT_ENTERPRISE_S 0x0000007D
#define PRODUCT_ENTERPRISE_S_N 0x0000007E
#define PRODUCT_PROFESSIONAL_S 0x0000007F
#define PRODUCT_PROFESSIONAL_S_N 0x00000080
#define PRODUCT_ENTERPRISE_S_EVALUATION 0x00000081
#define PRODUCT_ENTERPRISE_S_N_EVALUATION 0x00000082

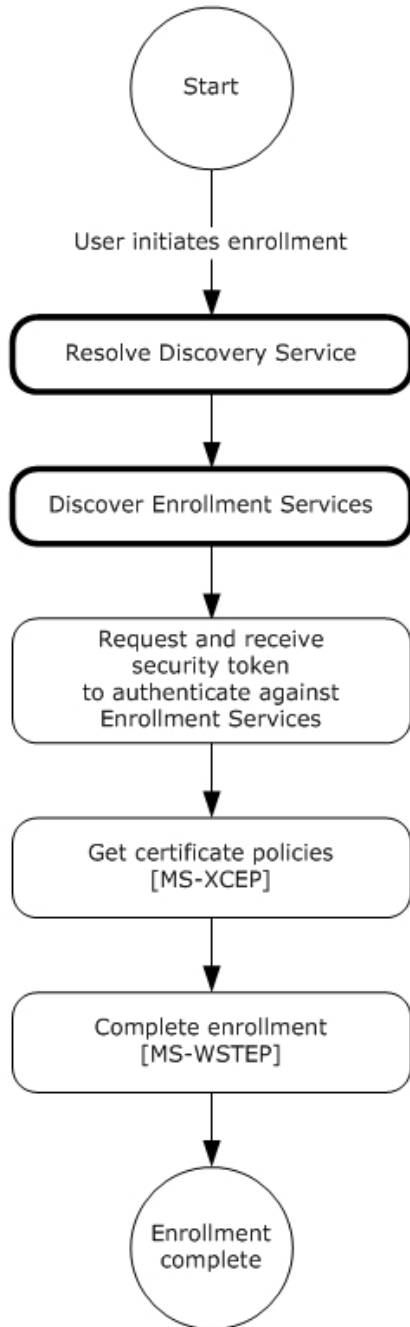
```



### 3 Protocol Details

#### 3.1 IDiscoveryService Server Details

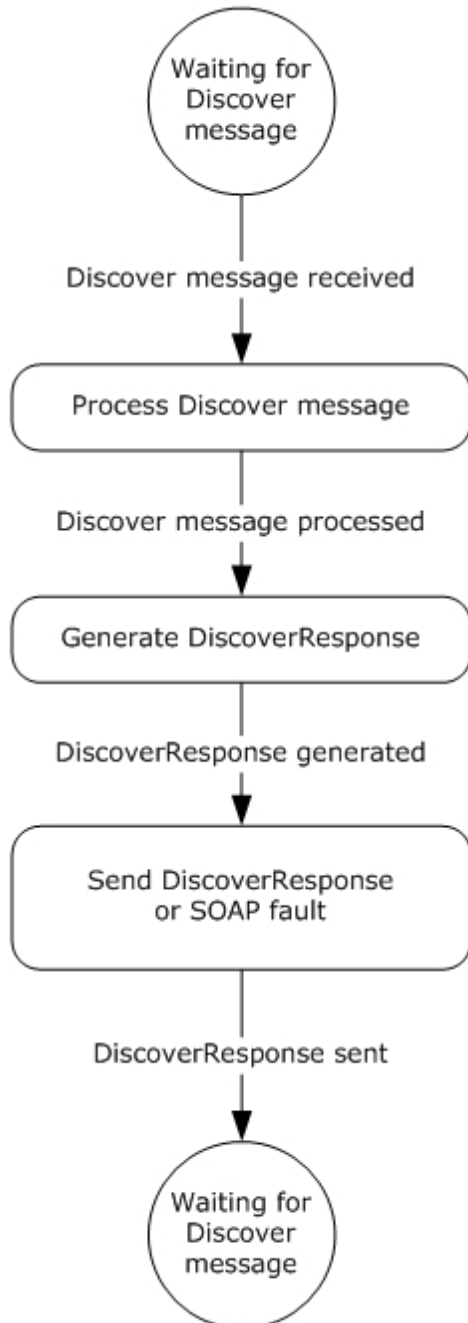
This section describes the first and second phases in MDE2 device enrollment: resolving the Discovery Service (DS) and discovering the ES. The following diagram highlights these two phases.



**Figure 8: MDE2 device enrollment: resolving the DS and discovering the ES**

The **IDiscoveryService** in MDE2 hosts an endpoint to receive messages from the enrollment client. When a **Discover** request message (section [3.1.4.1.1.1](#)) is received from the client, the server processes the request and returns a **DiscoverResponse** message (section [3.1.4.1.1.2](#)) to the client. The response identifies the endpoints to be used by the client to obtain the security tokens and enroll via the ES. After the response message is sent to the client, the server returns to the waiting state.

The following diagram shows the role of the server in resolving the Discovery Service (DS) for the enrollment client:



**Figure 9: Role of server in resolving the DS**

As a prerequisite for enabling the enrollment client to discover the Discovery Service (DS), the administrator MUST configure the DNS, such that the name "EnterpriseEnrollment.[User's Domain]" resolves to the Discovery Service (DS). The enrollment client extracts the domain suffix from the email address of the enrolling user and prepends it with the DNS to construct the address for the **DS**. For example, if the email address for the user is "user1@contoso.com", the enrollment client extracts the domain suffix "contoso.com" and prepends it with the DNS to construct the **DS** address "EnterpriseEnrollment.contoso.com".

In the example, the full URL sent by the client to the **DS** is "https://EnterpriseEnrollment.contoso.com/EnrollmentServer/Discovery.svc".

The path portion of the URL "/EnrollmentServer/Discovery.svc" is always constant.

The enrollment client validates the Secure Sockets Layer (SSL) certificate that is protecting the **DS** endpoint, along with any intermediary certificates that are signed by a trusted CA.

### 3.1.1 Abstract Data Model

This section describes a conceptual model of possible data organization that an implementation maintains to participate in this protocol. The described organization is provided to facilitate the explanation of how the protocol behaves. This document does not mandate that implementations adhere to this model as long as their external behavior is consistent with that described in this document.

**EnrollmentServiceDirectory:** A repository which stores the URLs for the services used during enrollment.

### 3.1.2 Timers

None.

### 3.1.3 Initialization

The **EnrollmentServiceDirectory** element MUST be initialized with the list of ES's.

### 3.1.4 Message Processing Events and Sequencing Rules

The following table summarizes the list of WSDL operations for discovering the ES:

WSDL Operation	Description
Discover	Describes the messages for discovering service endpoints to complete enrollment. Service endpoints include the security token issuance endpoints and the ES endpoints.

#### 3.1.4.1 Discover

The **Discover** operation defines the client request and server response messages that are used to complete the process of discovering URLs for the ES's.

This operation is specified by the following WSDL.

```
<wsdl:operation name="Discover">
```

```

    <wsdl:input
wsaw:Action="http://schemas.microsoft.com/windows/management/2012/01/enrollment/IDiscoveryService/Discover" name="IDiscoveryService_Discover_InputMessage"
message="tns:IDiscoveryService_Discover_InputMessage"/>
    <wsdl:output
wsaw:Action="http://schemas.microsoft.com/windows/management/2012/01/enrollment/IDiscoveryService/DiscoverResponse" name="IDiscoveryService_Discover_OutputMessage"
message="tns:IDiscoveryService_Discover_OutputMessage"/>
</wsdl:operation>

```

The following sections specify the request commands used in conjunction with the SyncML message specified in [\[MS-MDM\]](#) section 2.2.4.1.

### 3.1.4.1.1 Messages

The following table summarizes the set of WSDL message definitions that are specific to this operation.

Message	Description
IDiscoveryService_Discover_InputMessage	Sent from the client to the server to discover service endpoints.
IDiscoveryService_Discover_OutputMessage	Sent from the server to the client and contains the information about the service endpoints.

#### 3.1.4.1.1.1 IDiscoveryService\_Discover\_InputMessage Message

The **IDiscoveryService\_Discover\_InputMessage** message contains the **Discover** request message for the **Discover** operation.

The **SOAP action** value is:

```
http://schemas.microsoft.com/windows/management/2012/01/enrollment/IDiscoveryService/Discover
```

The **Discover** request message is sent from the client to the server to discover ES endpoints.

```

<wsdl:message name="IDiscoveryService_Discover_InputMessage">
  <wsdl:part name="Discover" element="tns:Discover"/>
</wsdl:message>

```

**tns:Discover:** An instance of a <Discover> element (section [3.1.4.1.2.1](#)).

#### 3.1.4.1.1.2 IDiscoveryService\_Discover\_OutputMessage Message

The **IDiscoveryService\_Discover\_OutputMessage** message contains the **DiscoverResponse** response message for the **Discover** operation.

The SOAP action value is:

```
http://schemas.microsoft.com/windows/management/2012/01/enrollment/IDiscoveryService/DiscoverResponse
```

The **DiscoverResponse** response message is sent from the server to the client and contains information about the ES endpoints.

```
<wsdl:message name="IDiscoveryService_Discover_OutputMessage">
  <wsdl:part name="DiscoverResponse" element="tns:DiscoverResponse"/>
</wsdl:message>
```

**tns:DiscoverResponse:** An instance of a <DiscoverResponse> element (section [3.1.4.1.2.2](#)).

### 3.1.4.1.2 Elements

The following table summarizes the set of XML Schema element definitions that are specific to this operation.

Element	Description
Discover	Contains the body of the Discover request message sent by the client.
DiscoverResponse	Contains the body of the Discover response message sent by the server in response to the request message received from the client.

#### 3.1.4.1.2.1 Discover

The <Discover> element contains the client request to the server.

```
<xsd:element name="Discover" nillable="true">
  <xsd:complexType>
    <xsd:sequence>
      <xsd:element minOccurs="1" maxOccurs="1" name="request" nillable="true"
type="tns:DiscoveryRequest"/>
    </xsd:sequence>
  </xsd:complexType>
</xsd:element>
```

**request:** This element is of type <DiscoveryRequest> (section [3.1.4.1.3.1](#)) and contains information about the request.

#### 3.1.4.1.2.2 DiscoverResponse

The <DiscoverResponse> element contains the information to send in the response from the server to the client.

```
<xsd:element name="DiscoverResponse" nillable="true">
  <xsd:complexType>
    <xsd:sequence>
      <xsd:element minOccurs="1" maxOccurs="1" name="DiscoverResult" nillable="true"
type="tns:DiscoveryResponse"/>
    </xsd:sequence>
  </xsd:complexType>
</xsd:element>
```

**DiscoverResult:** This element is of type <DiscoveryResponse> (section [3.1.4.1.3.2](#)) and contains response information from the server.

#### 3.1.4.1.3 Complex Types

The following table summarizes the set of XML Schema complex type definitions that are specific to this operation.

ComplexType	Description
DiscoveryRequest	Specifies the type of the <Discover> element for the <b>Discover</b> (section <a href="#">3.1.4.1.1.1</a> ) message.
DiscoveryResponse	Specifies the type of the <DiscoverResponse> element for the <b>DiscoverResponse</b> (section <a href="#">3.1.4.1.1.2</a> ) message.

### 3.1.4.1.3.1 DiscoveryRequest

Note: Some of the information in this section is subject to change because it applies to an unreleased, preliminary version of the Windows Server operating system, and thus may differ from the final version of the server software when released. All behavior notes that pertain to the unreleased, preliminary version of the Windows Server operating system contain specific references to Windows Server 2016 Technical Preview in the Product Behavior appendix.

The <DiscoveryRequest> complex type describes the information to send to the server in the <Discover> request element (section [3.1.4.1](#)).

**Namespace:** <http://schemas.microsoft.com/windows/management/2012/01/enrollment>

```
<xsd:element name="request">
  <xsd:complexType>
    <xsd:all>
      <xsd:element name="request">
        <xsd:complexType>
          <xsd:all>
            <xsd:element minOccurs="1" maxOccurs="1" name="EmailAddress"
type="enroll:EmailAddressType"/>
            <xsd:element minOccurs="1" maxOccurs="1" name="RequestVersion"
type="xsd:decimal"/>
            <xsd:element minOccurs="1" maxOccurs="1" name="DeviceType"
type="enroll:DeviceType"/>
            <xsd:element minOccurs="1" maxOccurs="1"
name="ApplicationVersion" type="enroll:DottedQuadType"/>
            <xsd:element minOccurs="1" maxOccurs="1" name="OSEdition"
type="xsd:unsignedInt"/>
            <xsd:element name="AuthPolicies">
              <xsd:complexType>
                <xsd:sequence>
                  <xsd:element minOccurs="1" maxOccurs="3"
name="AuthPolicy" type="enroll:AuthPolicyType"/>
                </xsd:sequence>
              </xsd:complexType>
            </xsd:element>
          </xsd:all>
        </xsd:complexType>
      </xsd:element>
    </xsd:all>
  </xsd:complexType>
</xsd:element>
```

**EmailAddress:** This element supplies the name of the user making the enrollment request. The <EmailAddress> value is used by the **DS** to identify the ESs to return to the client.

**OSEdition:** This element specifies the type of OS and MUST be set to the decimal value as an int of the product enumeration defined in section [2.2.9.6](#).

**DeviceType:** This element specifies the device type and MAY be set to WindowsPhone or CIMClient\_Windows.

**RequestVersion:** The value MUST be set to 3.0, 2.0, or 1.0.

**ApplicationVersion:** This element specifies the application version and MUST be set in the format int.int.int.int.

**AuthPolicies:** This element specifies the authentication method and MUST be set to Federated, Certificate, or OnPremise.

### 3.1.4.1.3.2 DiscoveryResponse

Note: Some of the information in this section is subject to change because it applies to an unreleased, preliminary version of the Windows Server operating system, and thus may differ from the final version of the server software when released. All behavior notes that pertain to the unreleased, preliminary version of the Windows Server operating system contain specific references to Windows Server 2016 Technical Preview in the Product Behavior appendix.

The <DiscoveryResponse> complex type describes the information to send to the client in the <DiscoverResponse> request element (section [3.1.4.1.2.2](#)).

**Namespace:** http://schemas.microsoft.com/windows/management/2012/01/enrollment

```
xsd:element name="DiscoveryResponse">
  <xsd:complexType>
    <xsd:all>
      <xsd:element name="DiscoverResult">
        <xsd:complexType>
          <xsd:all>
            <xsd:element minOccurs="1" maxOccurs="1" name="AuthPolicy"
type="enroll:AuthPolicyType"/>
            <xsd:element minOccurs="0" maxOccurs="1"
name="EnrollmentPolicyServiceUrl" nillable="true" type="xsd:anyURI"/>
            <xsd:element minOccurs="1" maxOccurs="1"
name="EnrollmentServiceUrl" type="xsd:anyURI"/>
            <xsd:element minOccurs="0" maxOccurs="1"
name="AuthenticationServiceUrl" nillable="true" type="xsd:anyURI"/>
            <xsd:element minOccurs="0" maxOccurs="1" name="EnrollmentVersion"
nillable="true" type="xsd:decimal"/>
          </xsd:all>
        </xsd:complexType>
      </xsd:element>
    </xsd:all>
  </xsd:complexType>
</xsd:element>
```

**AuthPolicy:** The value is a string and MUST be set to Federated, Certificate, or OnPremise.

**AuthenticationServiceUrl:** The value of <AuthenticationServiceUrl> is the name of the STS from which the client will retrieve a security token.

**EnrollmentPolicyServiceUrl:** The value of <EnrollmentPolicyServiceUrl> is the address of the **DS** against which the X.509 Certificate Enrollment Policy Protocol [\[MS-XCEP\]](#) operations are performed.

**EnrollmentServiceUrl:** The value of <EnrollmentServiceUrl> is the address of the **DS** against which the WS-Trust X.509v3 Token Enrollment Extensions [\[MS-WSTEP\]](#) operations are performed.

**EnrollmentVersion:** The value is 3.0.

### 3.1.5 Timer Events

None.

### 3.1.6 Other Local Events

None.

## 3.2 Interaction with Security Token Service (STS)

### 3.3 Interaction with X.509 Certificate Enrollment Policy

#### 3.3.1 Abstract Data Model

None.

#### 3.3.2 Timers

None.

#### 3.3.3 Initialization

None.

#### 3.3.4 Message Processing Events and Sequencing Rules

The following table summarizes the list of WSDL operations for obtaining the certificate policies:

Operation	Description
<a href="#">GetPolicies</a>	Defines the client request and server response messages for completing the process of retrieving a certificate policy for enrollment.

This section specifies the details for how MDE2 uses messages defined by the X.509 Certificate Enrollment Policy Protocol [\[MS-XCEP\]](#).

##### 3.3.4.1 GetPolicies Operation

The **GetPolicies** operation defines the client request and server response messages that are used to complete the process of retrieving a certificate policy for enrollment.

```
<wsdl:operation name="GetPolicies">
  <wsdl:input
    wsaw:Action=http://schemas.microsoft.com/windows/pki/2009/01/enrollmentpolicy/IPolicy/GetPolicies
    message="xcep:IPolicy_GetPolicies_InputMessage"/>
  <wsdl:output
    wsaw:Action=http://schemas.microsoft.com/windows/pki/2009/01/enrollmentpolicy/IPolicy/GetPoliciesResponse
    message="xcep:IPolicy_GetPolicies_OutputMessage"/>
</wsdl:operation>
```

##### 3.3.4.1.1 Messages

The following table summarizes the set of WSDL message definitions that are specific to this operation.



Message	Description
<a href="#">GetPolicies</a>	Sent from the client to the server to retrieve the certificate policies for enrollment.
<a href="#">GetPoliciesResponse</a>	Sent from the server to the client and contains the requested certificate policy objects for enrollment.

### 3.3.4.1.1.1 GetPolicies

The **GetPolicies** message contains the request for the **GetPolicies** operation.

The SOAP action value is:

```
http://schemas.microsoft.com/windows/pki/2009/01/enrollmentpolicy/IPolicy/GetPolicies
```

#### 3.3.4.1.1.1.1 Get Policies using Federated Authentication

Note: Some of the information in this section is subject to change because it applies to an unreleased, preliminary version of the Windows Server operating system, and thus may differ from the final version of the server software when released. All behavior notes that pertain to the unreleased, preliminary version of the Windows Server operating system contain specific references to Windows Server 2016 Technical Preview in the Product Behavior appendix.

The **GetPolicies** request message is sent from the client to the server to retrieve the certificate policies for enrollment.

```
<wsdl:message name="IPolicy_GetPolicies_InputMessage">
  <wsdl:part name="request" element="xcep:GetPolicies"/>
</wsdl:message>
```

**xcep:GetPolicies:** An instance of a <GetPolicies> element as specified in [\[MS-XCEP\]](#) section 3.1.4.1.2.1. MDE2 modifies the **GetPolicies** message defined in [\[MS-XCEP\]](#) section 3.1.4.1.1.1.

Authentication MUST be implemented for this message as defined in section [3.3](#). In summary, the following elements and attributes MUST be specified in the **SOAP header**:

**wsse:Security:** The <wsse:Security> element MUST be a child of <s:Header>.

**wsse:BinarySecurityToken:** The <wsse:BinarySecurityToken> element MUST be a child of <wsse:Security> in <s:Header>.

**wsse:BinarySecurityToken/attributes/ValueType:** The <wsse:BinarySecurityToken> ValueType attribute MUST be "http://schemas.microsoft.com/5.0.0.0/ConfigurationManager/Enrollment/DeviceEnrollment/UserToken".

**wsse:BinarySecurityToken/attributes/EncodingType:** The <wsse:BinarySecurityToken> EncodingType attribute MUST be http://docs.oasis-open.org/wss/2004/01/oasis-200401-wss-wssecurity-secext-1.0.xsd#base64binary.

The following elements with their specified values MUST be included in the **SOAP body** of the request message.

**xcep:requestfilter:** MDE2 modifies the <GetPolicies> element by setting the <requestFilter> element **xsi:nil** attribute to "true" (see [\[MS-XCEP\]](#) section 3.1.4.1.2.1).

**xcep:lastUpdate:** MDE2 modifies the <GetPolicies> **xcep:client** attribute by setting the <Client> <lastUpdate> element **xsi:nil** attribute to "true" (see [MS-XCEP] section 3.1.4.1.3.9).

**xcep:preferredLanguage:** MDE2 modifies the <GetPolicies> **xcep:client** attribute by setting the <Client> <preferredLanguage> element **xsi:nil** attribute to "true" (see [MS-XCEP] section 3.1.4.1.3.9).

### 3.3.4.1.1.2 GetPolicies using Certificate Authentication

Note: All of the information in this section is subject to change because it applies to an unreleased, preliminary version of the Windows Server operating system, and thus may differ from the final version of the server software when released. All behavior notes that pertain to the unreleased, preliminary version of the Windows Server operating system contain specific references to Windows Server 2016 Technical Preview as an aid to the reader.

The **GetPolicies** request message is sent from the client to the server to retrieve the certificate policies for enrollment.

```
<wsdl:message name="IPolicy GetPolicies InputMessage">
  <wsdl:part name="request" element="xcep:GetPolicies"/>
</wsdl:message>
```

**xcep:GetPolicies:** An instance of a <GetPolicies> element as specified in [MS-XCEP] section 3.1.4.1.2.1. MDE2 modifies the **GetPolicies** message defined in [MS-XCEP] section 3.1.4.1.1.1.

Authentication MUST be implemented for this message as defined in section 3.3. In summary, the following elements and attributes MUST be specified in the SOAP header:

**wsse:Security:** The <wsse:Security> element MUST be a child of <s:Header>.

**u:Timestamp:** The <u:Timestamp> element MUST be a child of <wsse:Security> in <s:Header> for certificate authentication.

**u:Created:** The <u:Created> element MUST be a child of <u:Timestamp> in <s:Header> for certificate authentication. The value is a date/time.

**u:Expires:** The <u:Expires> element MUST be a child of <u:Timestamp> in <s:Header> for certificate authentication. The value is a date/time.

**wsse:BinarySecurityToken:** The <wsse:BinarySecurityToken> element MUST be a child of <wsse:Security> in <s:Header> for certificate authentication.

**wsse:BinarySecurityToken/attributes/ValueType:** The value type MUST be "http://docs.oasis-open.org/wss/2004/01/oasis-200401-wss-x509-token-profile-1.0#X509v3" for certificate authentication.

**wsse:BinarySecurityToken/attributes/Id:** The value is a string.

**wsse:BinarySecurityToken/attributes/EncodingType:** The <wsse:BinarySecurityToken> EncodingType attribute MUST be http://docs.oasis-open.org/wss/2004/01/oasis-200401-wss-wssecurity-secext-1.0.xsd#base64binary for certificate authentication.

**ds:Signature:** The <ds:Signature> element MUST be a child of <wsse:Security> in <s:Header> for certificate authentication.

**ds:SignedInfo:** The <ds:Signature> element MUST be a child of <ds:Signature> in <s:Header> for certificate authentication.

**ds:CanonicalizationMethod:** The <ds:CanonicalizationMethod> element MUST be a child of <ds:SignedInfo> in <s:Header> for certificate authentication.

**ds:CanonicalizationMethod/attributes/Algorithm:** The <ds:CanonicalizationMethod> Algorithm attribute MUST be <http://www.w3.org/2001/10/xml-exc-c14n#>

**ds:SignatureMethod:** The <ds:SignatureMethod> element MUST be a child of <ds:SignedInfo> in <s:Header> for certificate authentication.

**ds:SignatureMethod/attributes/Algorithm:** The <ds:SignatureMethod> Algorithm attribute MUST be <http://www.w3.org/2001/04/xmldsig-more#rsa-sha256>

**ds:Reference:** The <ds:Reference> element MUST be a child of <ds:SignedInfo> in <s:Header> for certificate authentication.

**ds:Reference/attributes/URI:** The <ds:Reference> URI attribute MUST be ""

**ds:Transforms:** The <ds:Transforms> element MUST be a child of <ds:Reference> in <s:Header> for certificate authentication.

**ds:Transform:** The <ds:Transform> element MUST be a child of <ds:Reference> in <s:Header> for certificate authentication.

**ds:Transform/attributes/Algorithm:** The <ds:SignatureMethod> Algorithm attribute MUST be <http://www.w3.org/2000/09/xmldsig#enveloped-signature>

**ds:DigestMethod:** The <ds:DigestMethod> element MUST be a child of <ds:Reference> in <s:Header> for certificate authentication.

**ds:DigestMethod/attributes/Algorithm:** The <ds:DigestMethod> Algorithm attribute MUST be <http://www.w3.org/2001/04/xmldsig#sha256>

**ds:DigestValue:** The <ds:DigestValue> element MUST be a child of <ds:Reference> in <s:Header> for certificate authentication. The value is a string.

**ds:SignatureValue:** The <ds:SignatureValue> element MUST be a child of <ds:Signature> in <s:Header> for certificate authentication. The value is a string.

**ds:KeyInfo:** The <ds:KeyInfo> element MUST be a child of <ds:Signature> in <s:Header> for certificate authentication.

**wsse:SecurityTokenReference:** The <wsse:SecurityTokenReference> element MUST be a child of <ds:Signature> in <s:Header> for certificate authentication.

**wsse:Reference:** The <wsse:Reference> element MUST be a child of <wsse:SecurityTokenReference> in <s:Header> for certificate authentication.

**wsse:Reference/attributes/URI:** The <wsse:Reference> URI attribute is a string

**wsse:Reference/attributes/ValueType:** The <wsse:Reference> ValueType attribute MUST be <http://docs.oasis-open.org/wss/2004/01/oasis-200401-wss-x509-token-profile-1.0#X509>

The following elements with their specified values MUST be included in the SOAP body of the request message.

**xcep:requestfilter:** MDE2 modifies the <GetPolicies> element by setting the <requestFilter> element **xsi:nil** attribute to "true" (see [MS-XCEP] section 3.1.4.1.2.1).

**xcep:lastUpdate:** MDE2 modifies the <GetPolicies> **xcep:client** attribute by setting the <Client> <lastUpdate> element **xsi:nil** attribute to "true" (see [MS-XCEP] section 3.1.4.1.3.9).

**xcep:preferredLanguage:** MDE2 modifies the <GetPolicies> **xcep:client** attribute by setting the <Client> <preferredLanguage> element **xsi:nil** attribute to "true" (see [MS-XCEP] section 3.1.4.1.3.9).

### 3.3.4.1.1.1.3 GetPolicies using On-Premise Authentication

Note: All of the information in this section is subject to change because it applies to an unreleased, preliminary version of the Windows Server operating system, and thus may differ from the final version of the server software when released. All behavior notes that pertain to the unreleased, preliminary version of the Windows Server operating system contain specific references to Windows Server 2016 Technical Preview as an aid to the reader.

The **GetPolicies** request message is sent from the client to the server to retrieve the certificate policies for enrollment.

```
<wsdl:message name="IPolicy_GetPolicies_InputMessage">
  <wsdl:part name="request" element="xcep:GetPolicies"/>
</wsdl:message>
```

**xcep:GetPolicies:** An instance of a <GetPolicies> element as specified in [MS-XCEP] section 3.1.4.1.2.1. MDE2 modifies the **GetPolicies** message specified in [MS-XCEP] section 3.1.4.1.1.1.

Authentication MUST be implemented for this message as specified in section 3.3. In summary, the following elements and attributes MUST be specified in the SOAP header:

**wsse:Security:** The <wsse:Security> element MUST be a child of <s:Header>.

**wsse:UsernameToken:** The <wsse: UsernameToken> element MUST be a child of <wsse:Security> in <s:Header> for on-premise authentication.

**wsse:Username:** The <wsse: Username> element MUST be a child of <wsse:UsernameToken> in <s:Header> and the value specifies the user name.

**wsse:UsernameToken/attributes/u:Id:** The type MUST be "uuid-cc1ccc1f-2fba-4bcf-b063-ffc0cac77917-4" for on-premise authentication.

**wsse:Password:** The <wsse: Password> element MUST be a child of <wsse: UsernameToken> in <s:Header> and the value specifies the user password.

**wsse: Password/attributes/Type:** The type MUST be "http://docs.oasis-open.org/wss/2004/01/oasis-200401-wss-username-token-profile-1.0#PasswordText" for on-premise authentication.

The following elements with their specified values MUST be included in the SOAP body of the request message.

**xcep:requestfilter:** MDE2 modifies the <GetPolicies> element by setting the <requestFilter> element **xsi:nil** attribute to TRUE (see [MS-XCEP] section 3.1.4.1.2.1).

**xcep:lastUpdate:** MDE2 modifies the <GetPolicies> **xcep:client** attribute by setting the <Client> <lastUpdate> element **xsi:nil** attribute to TRUE (see [MS-XCEP] section 3.1.4.1.3.9).

**xcep:preferredLanguage:** MDE2 modifies the <GetPolicies> **xcep:client** attribute by setting the <Client> <preferredLanguage> element **xsi:nil** attribute to TRUE (see [MS-XCEP] section 3.1.4.1.3.9).

### 3.3.4.1.1.2 GetPoliciesResponse

Note: Some of the information in this section is subject to change because it applies to an unreleased, preliminary version of the Windows Server operating system, and thus may differ from the final version of the server software when released. All behavior notes that pertain to the unreleased, preliminary version of the Windows Server operating system contain specific references to Windows Server 2016 Technical Preview in the Product Behavior appendix.

The **GetPoliciesResponse** message contains the response for the **GetPolicies** operation.

The SOAP action value is:

```
http://schemas.microsoft.com/windows/pki/2009/01/enrollmentpolicy/IPolicy/GetPoliciesResponse
```

The **GetPoliciesResponse** message is sent from the server to the client and contains the requested **certificate enrollment policies**.

```
<wsdl:message name="IPolicy_GetPolicies_OutputMessage">  
  <wsdl:part name="response" element="xcep:GetPoliciesResponse"/>  
</wsdl:message>
```

**xcep:GetPoliciesResponse:** An instance of a <GetPoliciesResponse> element as specified in [\[MS-XCEP\]](#) section 3.1.4.1.2.2.

The enrollment client evaluates the following child elements of the <GetPoliciesResponse> element to determine whether to include the child element in the SOAP body of the response message. When a child element is included, the element and value are specified using syntax similar to **XML Path Language (XPath)**.

**xcep:GetPoliciesResponse/response/policyFriendlyName** (see [MS-XCEP] section 3.1.4.1.3.23).

**xcep:GetPoliciesResponse/response/nextUpdateHours** (see [MS-XCEP] section 3.1.4.1.3.23).

**xcep:GetPoliciesResponse/response/policiesNotChanged** (see [MS-XCEP] section 3.1.4.1.3.23).

**xcep:GetPoliciesResponse/response/policies/policy/attributes/policyschema:** The value MUST be 3 (see [MS-XCEP] section 3.1.4.1.3.1).

**xcep:GetPoliciesResponse/response/policies/policy/attributes/privatekeyattributes/miniMalkeylength** (see [MS-XCEP] section 3.1.4.1.3.20).

**xcep:GetPoliciesResponse/response/policies/policy/attributes/privatekeyattributes/algorithmOIDReference** (see [MS-XCEP] section 3.1.4.1.3.20).

**xcep:GetPoliciesResponse/response/policies/policy/attributes/privatekeyattributes/keySpec** (see [MS-XCEP] section 3.1.4.1.3.20).

**xcep:GetPoliciesResponse/response/policies/policy/attributes/privatekeyattributes/keyUsageProperty** (see [MS-XCEP] section 3.1.4.1.3.20).

**xcep:GetPoliciesResponse/response/policies/policy/attributes/privatekeyattributes/permissions** (see [MS-XCEP] section 3.1.4.1.3.20).

**xcep:GetPoliciesResponse/response/policies/policy/attributes/privatekeyattributes/cryptoproviders** (see [MS-XCEP] section 3.1.4.1.3.20).

**xcep:GetPoliciesResponse/response/policies/policy/attributes/hashAlgorithmOIDReference:** The referenced object identifier (OID) MUST be in the <GetPoliciesResponse> element (see [MS-XCEP] section 3.1.4.1.3.1).

**xcep:GetPoliciesResponse/response/policies/policy/attributes/supersededPolicies** (see [MS-XCEP] section 3.1.4.1.3.1).

**xcep:GetPoliciesResponse/response/policies/policy/attributes/privateKeyFlags** (see [MS-XCEP] section 3.1.4.1.3.1).

**xcep:GetPoliciesResponse/response/policies/policy/attributes/subjectNameFlags** (see [MS-XCEP] section 3.1.4.1.3.1).

**xcep:GetPoliciesResponse/response/policies/policy/attributes/enrollmentFlags** (see [MS-XCEP] section 3.1.4.1.3.1).

**xcep:GetPoliciesResponse/response/policies/policy/attributes/rARequirements** (see [MS-XCEP] section 3.1.4.1.3.1).

**xcep:GetPoliciesResponse/response/policies/policy/attributes/keyArchivalAttributes** (see [MS-XCEP] section 3.1.4.1.3.1).

**xcep:GetPoliciesResponse/response/policies/policy/attributes/extensions** (see [MS-XCEP] section 3.1.4.1.3.1).

**xcep:GetPoliciesResponse/oIDs/oID:** The OID referred to by the value of the **hashAlgorithmOIDReference** element specified in the previous point (see [MS-XCEP] section 3.1.4.1.2.2). The value MUST conform to the constraints specified in [MS-XCEP] section 3.1.4.1.3.16. For example, the <group> element value is 1.

.

### 3.3.5 Timer Events

None.

### 3.3.6 Other Local Events

None.

## 3.4 Interaction with WS-Trust X.509v3 Token Enrollment

### 3.4.1 Abstract Data Model

None.

### 3.4.2 Timers

None.

### 3.4.3 Initialization

None.

### 3.4.4 Message Processing Events and Sequencing Rules

The following table summarizes the list of WSDL operations for completing enrollment:

Operation	Description
<a href="#">RequestSecurityToken</a>	Provides the mechanism for completing the enrollment process. MDE2 uses the messages as specified in the WS-Trust X.509v3 Token Enrollment Extensions (see <a href="#">[MS-WSTEP]</a> section 3.1.4).

### 3.4.4.1 RequestSecurityToken Operation

The **RequestSecurityToken** operation is called by the client to register a device.

```
<wsdl:operation name="RequestSecurityToken">
  <wsdl:input
    wsaw:Action="http://schemas.microsoft.com/windows/pki/2009/01/enrollment/RST/wstep"
    message="tns:IWindowsDeviceEnrollmentService_RequestSecurityToken_InputMessage"/>
  <wsdl:output
    wsaw:Action="http://schemas.microsoft.com/windows/pki/2009/01/enrollment/RSTRC/wstep"
    message="tns:IWindowsDeviceEnrollmentService_RequestSecurityToken_OutputMessage"/>
  <wsdl:fault
    wsaw:Action="http://schemas.microsoft.com/windows/pki/2009/01/enrollment/IWindowsDeviceEnrollmentService/RequestSecurityTokenWindowsDeviceEnrollmentServiceErrorFault"
    name="WindowsDeviceEnrollmentServiceErrorFault"
    message="tns:IWindowsDeviceEnrollmentService_RequestSecurityToken_WindowsDeviceEnrollmentServiceErrorFault_FaultMessage"/>
</wsdl:operation>
```

#### 3.4.4.1.1 Messages

The following table summarizes the set of WSDL message definitions that are specific to this operation.

Message	Description
<a href="#">RequestSecurityToken</a>	Sent from the client to the server to enroll a user.
<a href="#">RequestSecurityTokenResponseCollection</a>	Sent from the server to the client and contains the requested certificate and provisioning information.

#### 3.4.4.1.1.1 RequestSecurityToken

Note: Some of the information in this section is subject to change because it applies to an unreleased, preliminary version of the Windows Server operating system, and thus may differ from the final version of the server software when released. All behavior notes that pertain to the unreleased, preliminary version of the Windows Server operating system contain specific references to Windows Server 2016 Technical Preview in the Product Behavior appendix.

The **RequestSecurityToken** message contains the request for the **RequestSecurityToken** operation.

The SOAP action value is:

```
http://schemas.microsoft.com/windows/pki/2009/01/enrollment/RST/wstep
```

The **RequestSecurityToken** request message ([\[WSTrust1.3\]](#) section 3.1) is sent from the client to the server to enroll a certificate and to retrieve provisioning information.

```
<wsdl:message name="RequestSecurityTokenMsg">
  <wsdl:part name="request" element="wst:RequestSecurityToken" />
</wsdl:message>
```

**wst:RequestSecurityToken:** MDE2 modifies the implementation of the **RequestSecurityToken** message as defined in [\[MS-WSTEP\]](#) section 3.1.4.1.1.1 and its associated protocols.

#### 3.4.4.1.1.1.1 RequestSecurityToken using Federated Authentication

Note: All of the information in this section is subject to change because it applies to an unreleased, preliminary version of the Windows Server operating system, and thus may differ from the final version of the server software when released. All behavior notes that pertain to the unreleased, preliminary version of the Windows Server operating system contain specific references to Windows Server 2016 Technical Preview as an aid to the reader.

Authentication MUST be implemented for this message as defined in section [3.4](#). In summary, the following elements and attributes MUST be specified in the SOAP header:

**wsse:Security:** The <wsse:Security> element MUST be a child of <s:Header>.

**wsse:BinarySecurityToken:** The <wsse:BinarySecurityToken> element MUST be a child of <wsse:Security> in <s:Header>.

**wsse:BinarySecurityToken/attributes/ValueType:** The <wsse:BinarySecurityToken> ValueType attribute MUST be "http://schemas.microsoft.com/5.0.0.0/ConfigurationManager/Enrollment/DeviceEnrollmentUserToken".

**wsse:BinarySecurityToken/attributes/EncodingType:** The <wsse:BinarySecurityToken> EncodingType attribute MUST be "http://docs.oasis-open.org/wss/2004/01/oasis-200401-wss-wssecurity-secext-1.0.xsd#base64binary".

The following elements and attributes are specified in the SOAP body of the request message.

**wst:RequestSecurityToken:** The <wst:RequestSecurityToken> element MUST be a child of <s:Body>.

**wst:TokenType:** The <wst:tokentype> element MUST be a child of <wst:RequestSecurityToken> and the value MUST be "http://schemas.microsoft.com/5.0.0.0/ConfigurationManager/Enrollment/DeviceEnrollmentToken" (see [\[WSTrust1.3\]](#) section 3.1).

**wst:RequestType:** The <wst:RequestType> element MUST be a child of <wst:RequestSecurityToken> and the value MUST be "http://docs.oasis-open.org/ws-sx/ws-trust/200512/Issue" (see [\[WSTrust1.3\]](#) section 3.1).

**wsse:BinarySecurityToken:** The <wsse:BinarySecurityToken> element MUST be a child of <wst:RequestSecurityToken> and MUST contain a base64-encoded **certificate signing request**.

**wsse:BinarySecurityToken/attributes/ValueType:** The <wsse:BinarySecurityToken> ValueType attribute MUST be "http://schemas.microsoft.com/windows/pki/2009/01/enrollment#PKCS10".

**wsse:BinarySecurityToken/attributes/EncodingType:** The <wsse:BinarySecurityToken> EncodingType attribute MUST be "http://docs.oasis-open.org/wss/2004/01/oasis-200401-wss-wssecurity-secext-1.0.xsd#base64binary".

**Namespace:** http://docs.oasis-open.org/wss/2004/01/oasis-200401-wss-wssecurity-secext-1.0.xsd



The following elements and their values are specified in the SOAP body of the request message:

**ac:AdditionalContext:** The <ac:AdditionalContext> element MUST be a child of <wst:RequestSecurityToken> (see [\[MS-WSTEP\]](#) section 3.1.4.1.3.3).

**ac:ContextItem:** One or more <ac:ContextItem> Name attributes MUST be specified as child elements of <ac:AdditionalContext> to represent the device.

**ac:ContextItem/attributes/Name:** The <ac:ContextItem> Name attribute MUST be the literal string "OSEdition".

**ac:Value:** The <ac:Value> element MUST be a child of <ac:AdditionalContext> and the value MUST be set to the decimal value as an int of the product enumeration defined in section [2.2.9.6](#).

**ac:ContextItem/attributes/Name:** The <ac:ContextItem> Name attribute MUST be the literal string "OSVersion".

**ac:Value:** The <ac:Value> element MUST be a child of <ac:AdditionalContext> and the value is a string (UTF-8) in the format int.int.int.int.

**ac:ContextItem/attributes/Name:** The <ac:ContextItem> Name attribute MUST be the literal string "DeviceName".

**ac:Value:** The <ac:Value> element MUST be a child of <ac:AdditionalContext> and the value is a string (UTF-8) name of the device.

**ac:ContextItem/attributes/Name:** The <ac:ContextItem> Name attribute MUST be the literal string "EnrollmentType".

**ac:Value:** The <ac:Value> element MUST be a child of <ac:AdditionalContext> and the value is a string (UTF-8) that MUST be Full or Device.

**ac:ContextItem/attributes/Name:** The <ac:ContextItem> Name attribute MUST be the literal string "DeviceType".

**ac:Value:** The <ac:Value> element MUST be a child of <ac:AdditionalContext> and the value is a string (UTF 8) that MUST be WindowsPhone for mobile devices, CIMClient\_Windows for desktop devices, or WindowsHandheld for enterprise handheld devices.

**ac:ContextItem/attributes/Name:** The <ac:ContextItem> Name attribute MUST be the literal string "ApplicationVersion".

**ac:Value:** The <ac:Value> element MUST be a child of <ac:AdditionalContext> and the value is a string that specifies the application version in the format int.int.int.int.

**ac:ContextItem/attributes/Name:** The <ac:ContextItem> Name attribute MUST be the literal string "DeviceID".

**ac:Value:** The <ac:Value> element MUST be a child of <ac:AdditionalContext> and the value specifies the unique device identifier.

**ac:ContextItem/attributes/Name:** The <ac:ContextItem> Name attribute MUST be the literal string "EnrollmentData".

**ac:Value:** The <ac:Value> element MUST be a child of <ac:AdditionalContext> and the value contains the enrollment data.

**ac:ContextItem/attributes/Name:** The <ac:ContextItem> Name attribute MUST be the literal string "MAC". Multiple MAC addresses are supported if a device has multiple NICs.

**ac:Value:** The <ac:Value> element MUST be a child of <ac:AdditionalContext> and the value is a string (UTF-8) that specifies the MAC address of the device.

**ac:ContextItem/attributes/Name:** The <ac:ContextItem> Name attribute MUST be the literal string "IMEI".

**ac:Value:** The <ac:Value> element MUST be a child of <ac:AdditionalContext> and the value is an int that specifies the mobile equipment ID.

**ac:ContextItem/attributes/Name:** The <ac:ContextItem> Name attribute MUST be the literal string "TargetedUserLoggedIn".

**ac:Value:** The <ac:Value> element MUST be a child of <ac:AdditionalContext> and the value is true or false that indicates whether the user is logged in.

**Namespace:** http://schemas.xmlsoap.org/ws/2006/12/authorizationhttp

#### 3.4.4.1.1.2 RequestSecurityToken using Certificate Authentication

Note: All of the information in this section is subject to change because it applies to an unreleased, preliminary version of the Windows Server operating system, and thus may differ from the final version of the server software when released. All behavior notes that pertain to the unreleased, preliminary version of the Windows Server operating system contain specific references to Windows Server 2016 Technical Preview as an aid to the reader.

Authentication MUST be implemented for this message as defined in section [3.4](#). In summary, the following elements and attributes MUST be specified in the SOAP header:

**wsse:Security:** The <wsse:Security> element MUST be a child of <s:Header>.

**u:Timestamp:** The <u:Timestamp> element MUST be a child of <wsse:Security> in <s:Header> for certificate authentication.

**u:Created:** The <u:Created> element MUST be a child of <u:Timestamp> in <s:Header> for certificate authentication. The value is a date/time.

**u:Expires:** The <u:Expires> element MUST be a child of <u:Timestamp> in <s:Header> for certificate authentication. The value is a date/time.

**wsse:BinarySecurityToken:** The <wsse:BinarySecurityToken> element MUST be a child of <wsse:Security> in <s:Header>.

**wsse:BinarySecurityToken/attributes/ValueType:** The <wsse:BinarySecurityToken> ValueType attribute MUST be "http://schemas.microsoft.com/5.0.0.0/ConfigurationManager/Enrollment/DeviceEnrollmentUserToken".

**wsse:BinarySecurityToken/attributes/EncodingType:** The <wsse:BinarySecurityToken> EncodingType attribute MUST be "http://docs.oasis-open.org/wss/2004/01/oasis-200401-wss-wssecurity-secext-1.0.xsd#base64binary".

**ds:Signature:** The <ds:Signature> element MUST be a child of <wsse:Security> in <s:Header> for certificate authentication.

**ds:SignedInfo:** The <ds:Signature> element MUST be a child of <ds:Signature> in <s:Header> for certificate authentication.

**ds:CanonicalizationMethod:** The <ds:CanonicalizationMethod> element MUST be a child of <ds:SignedInfo> in <s:Header> for certificate authentication.

**ds:CanonicalizationMethod/attributes/Algorithm:** The <ds:CanonicalizationMethod> Algorithm attribute MUST be <http://www.w3.org/2001/10/xml-exc-c14n#>

**ds:SignatureMethod:** The <ds:SignatureMethod> element MUST be a child of <ds:SignedInfo> in <s:Header> for certificate authentication.

**ds:SignatureMethod/attributes/Algorithm:** The <ds:SignatureMethod> Algorithm attribute MUST be <http://www.w3.org/2001/04/xmldsig-more#rsa-sha256>

**ds:Reference:** The <ds:Reference> element MUST be a child of <ds:SignedInfo> in <s:Header> for certificate authentication.

**ds:Reference/attributes/URI:** The <ds:Reference> URI attribute MUST be ""

**ds:Transforms:** The <ds:Transforms> element MUST be a child of <ds:Reference> in <s:Header> for certificate authentication.

**ds:Transform:** The <ds:Transform> element MUST be a child of <ds:Reference> in <s:Header> for certificate authentication.

**ds:Transform/attributes/Algorithm:** The <ds:SignatureMethod> Algorithm attribute MUST be <http://www.w3.org/2000/09/xmldsig#enveloped-signature>

**ds:DigestMethod:** The <ds:DigestMethod> element MUST be a child of <ds:Reference> in <s:Header> for certificate authentication.

**ds:DigestMethod/attributes/Algorithm:** The <ds:DigestMethod> Algorithm attribute MUST be <http://www.w3.org/2001/04/xmldsig#sha256>

**ds:DigestValue:** The <ds:DigestValue> element MUST be a child of <ds:Reference> in <s:Header> for certificate authentication. The value is a string.

**ds:SignatureValue:** The <ds:SignatureValue> element MUST be a child of <ds:Signature> in <s:Header> for certificate authentication. The value is a string.

**ds:KeyInfo:** The <ds:KeyInfo> element MUST be a child of <ds:Signature> in <s:Header> for certificate authentication.

**wsse:SecurityTokenReference:** The <wsse:SecurityTokenReference> element MUST be a child of <ds:Signature> in <s:Header> for certificate authentication.

**wsse:Reference:** The <wsse:Reference> element MUST be a child of <wsse:SecurityTokenReference> in <s:Header> for certificate authentication.

**wsse:Reference/attributes/URI:** The <wsse:Reference> URI attribute is a string

**wsse:Reference/attributes/ValueType:** The <wsse:Reference> ValueType attribute MUST be <http://docs.oasis-open.org/wss/2004/01/oasis-200401-wss-x509-token-profile-1.0#X509>

**Namespace:** <http://www.w3.org/2000/09/xmldsig>

The following elements and attributes are specified in the SOAP body of the request message.

**wst:RequestSecurityToken:** The <wst:RequestSecurityToken> element MUST be a child of <s:Body>.

**wst:TokenType:** The <wst:tokentype> element MUST be a child of <wst:RequestSecurityToken> and the value MUST be "http://schemas.microsoft.com/5.0.0.0/ConfigurationManager/Enrollment/DeviceEnrollmentToken" ([\[WSTrust1.3\]](#) section 3.1).

**wst:RequestType:** The <wst:RequestType> element MUST be a child of <wst:RequestSecurityToken> and the value MUST be "http://docs.oasis-open.org/ws-sx/ws-trust/200512/Issue" ([\[WSTrust1.3\]](#) section 3.1).

**wsse:BinarySecurityToken:** The <wsse:BinarySecurityToken> element MUST be a child of <wst:RequestSecurityToken> and MUST contain a base64-encoded certificate signing request.

**wsse:BinarySecurityToken/attributes/ValueType:** The <wsse:BinarySecurityToken> ValueType attribute MUST be "http://schemas.microsoft.com/windows/pki/2009/01/enrollment#PKCS10".

**wsse:BinarySecurityToken/attributes/EncodingType:** The <wsse:BinarySecurityToken> EncodingType attribute MUST be "http://docs.oasis-open.org/wss/2004/01/oasis-200401-wss-wssecurity-secext-1.0.xsd#base64binary".

The following elements and their values are specified in the SOAP body of the request message.

**ac:ContextItem/attributes/Name:** The <ac:ContextItem> Name attribute MUST be the literal string "OSEdition".

**ac:Value:** The <ac:Value> element MUST be a child of <ac:AdditionalContext> and the value MUST be set to the decimal value as int of the product enumeration defined in section [2.2.9.6](#).

**ac:ContextItem/attributes/Name:** The <ac:ContextItem> Name attribute MUST be the literal string "OSVersion".

**ac:Value:** The <ac:Value> element MUST be a child of <ac:AdditionalContext> and the value is a string (UTF-8) in the format int.int.int.

**ac:ContextItem/attributes/Name:** The <ac:ContextItem> Name attribute MUST be the literal string "DeviceName".

**ac:Value:** The <ac:Value> element MUST be a child of <ac:AdditionalContext> and the value is a string (UTF-8) name of the device.

**ac:ContextItem/attributes/Name:** The <ac:ContextItem> Name attribute MUST be the literal string "EnrollmentType".

**ac:Value:** The <ac:Value> element MUST be a child of <ac:AdditionalContext> and the value is a string (UTF-8) that MUST be Full or Device.

**ac:ContextItem/attributes/Name:** The <ac:ContextItem> Name attribute MUST be the literal string "DeviceType".

**ac:Value:** The <ac:Value> element MUST be a child of <ac:AdditionalContext> and the value is a string (UTF 8) that MUST be WindowsPhone for mobile devices, CIMClient\_Windows for desktop devices, or WindowsHandheld for enterprise handheld devices.

**ac:ContextItem/attributes/Name:** The <ac:ContextItem> Name attribute MUST be the literal string "ApplicationVersion".

**ac:Value:** The <ac:Value> element MUST be a child of <ac:AdditionalContext> and the value is a string that specifies the application version in the format int.int.int.int.

**ac:ContextItem/attributes/Name:** The <ac:ContextItem> Name attribute MUST be the literal string "DeviceID".

**ac:Value:** The <ac:Value> element MUST be a child of <ac:AdditionalContext> and the value specifies the unique device identifier.

**ac:ContextItem/attributes/Name:** The <ac:ContextItem> Name attribute MUST be the literal string "EnrollmentData"

**ac:Value:** The <ac:Value> element MUST be a child of <ac:AdditionalContext> and the value contains the enrollment data.

**ac:ContextItem/attributes/Name:** The <ac:ContextItem> Name attribute MUST be the literal string "MAC". Multiple MAC addresses are supported if a device has multiple NICs.

**ac:Value:** The <ac:Value> element MUST be a child of <ac:AdditionalContext> and the value is a string (UTF-8) that specifies the MAC address of the device.

**ac:ContextItem/attributes/Name:** The <ac:ContextItem> Name attribute MUST be the literal string "IMEI".

**ac:Value:** The <ac:Value> element MUST be a child of <ac:AdditionalContext> and the value is an int that specifies the mobile equipment ID.

**ac:ContextItem/attributes/Name:** The <ac:ContextItem> Name attribute MUST be the literal string "TargetedUserLoggedIn".

**ac:Value:** The <ac:Value> element MUST be a child of <ac:AdditionalContext> and the value is true or false that indicates whether the user is logged in.

**Namespace:** http://schemas.xmlsoap.org/ws/2006/12/authorization

### 3.4.4.1.1.1.3 RequestSecurityToken using On-Premise Authentication

Note: All of the information in this section is subject to change because it applies to an unreleased, preliminary version of the Windows Server operating system, and thus may differ from the final version of the server software when released. All behavior notes that pertain to the unreleased, preliminary version of the Windows Server operating system contain specific references to Windows Server 2016 Technical Preview as an aid to the reader.

Authentication MUST be implemented for this message as defined in section 3.4. In summary, the following elements and attributes MUST be specified in the SOAP header:

**wsse:Security:** The <wsse:Security> element MUST be a child of <s:Header>.

**wsse:UsernameToken:** The <wsse:UsernameToken> element MUST be a child of <wsse:Security> in <s:Header>.

**wsse:UsernameToken/attributes/u:Id:** The type MUST be "uuid-cc1ccc1f-2fba-4bcf-b063-ffc0cac77917-4" for on-premise authentication.

**wsse:UserName:** The <wsse:Username> element MUST be a child of <wsse:UsernameToken> in <s:Header> and the value specifies the user name.

**wsse:Password:** The <wsse:Password> element MUST be a child of <wsse:UsernameToken> in <s:Header> and the value specifies the user password.

**wsse:Password/attributes/Type:** This value MUST be "http://docs.oasis-open.org/wss/2004/01/oasis-200401-wss-username-token-profile-1.0#PasswordText"

**Namespace:** : http://docs.oasis-open.org/wss/2004/01/oasis-200401-wss-wssecurity-secext-1.0.xsd

The following elements and attributes are specified in the SOAP body of the request message.

**wst:RequestSecurityToken:** The <wst:RequestSecurityToken> element MUST be a child of <s:Body>.

**wst:RequestType:** The <wst:RequestType> element MUST be a child of <wst:RequestSecurityToken> and the value MUST be "http://docs.oasis-open.org/ws-sx/ws-trust/200512/Issue" (see [\[WSTrust1.3\]](#) section 3.1).

**wst:TokenType:** The <wst:tokentype> element MUST be a child of <wst:RequestSecurityToken> and the value MUST be "http://schemas.microsoft.com/5.0.0.0/ConfigurationManager/Enrollment/DeviceEnrollmentToken" (see [\[WSTrust1.3\]](#) section 3.1).

**wsse:BinarySecurityToken:** The <wsse:BinarySecurityToken> element MUST be a child of <wst:RequestSecurityToken> and MUST contain a base64-encoded certificate signing request.

**wsse:BinarySecurityToken/attributes/ValueType:** The <wsse:BinarySecurityToken> ValueType attribute MUST be "http://schemas.microsoft.com/windows/pki/2009/01/enrollment#PKCS10".

**wsse:BinarySecurityToken/attributes/EncodingType:** The <wsse:BinarySecurityToken> EncodingType attribute MUST be "http://docs.oasis-open.org/wss/2004/01/oasis-200401-wss-wssecurity-secext-1.0.xsd#base64binary".

The following elements and their values are specified in the SOAP body of the request message.

**ac:AdditionalContext:** The <ac:AdditionalContext> element MUST be a child of <wst:RequestSecurityToken> (see [\[MS-WSTEP\]](#) section 3.1.4.1.3.3).

**ac:AdditionalContext:** The <ac:AdditionalContext> element MUST be a child of <s:body>.

**ac:ContextItem:** One or more <ac:ContextItem> Name attribute MUST be specified as child elements of <ac:AdditionalContext>.

**ac:ContextItem/attributes/Name:** The <ac:ContextItem> Name attribute MUST be the literal string "OSEdition".

**ac:Value:** The <ac:Value> element MUST be a child of <ac:AdditionalContext> and the value MUST be set to the decimal value as an int of the product enumeration defined in section [2.2.9.6](#).

**ac:ContextItem/attributes/Name:** The <ac:ContextItem> Name attribute MUST be the literal string "OSVersion".

**ac:Value:** The <ac:Value> element MUST be a child of <ac:AdditionalContext> and the value is a string (UTF-8) in the format int.int.int.int.

**ac:ContextItem/attributes/Name:** The <ac:ContextItem> Name attribute MUST be the literal string "DeviceName".

**ac:Value:** The <ac:Value> element MUST be a child of <ac:AdditionalContext> and the value is a string (UTF-8) name of the device.

**ac:ContextItem/attributes/Name:** The <ac:ContextItem> Name attribute MUST be the literal string "EnrollmentType".

**ac:Value:** The <ac:Value> element MUST be a child of <ac:AdditionalContext> and the value is a string (UTF-8) that MUST be Full or Device.

**ac:ContextItem/attributes/Name:** The <ac:ContextItem> Name attribute MUST be the literal string "DeviceType".

**ac:Value:** The <ac:Value> element MUST be a child of <ac:AdditionalContext> and the value is a string (UTF 8) that MUST be WindowsPhone for mobile devices, CIMClient\_Windows for desktop devices, or WindowsHandheld for enterprise handheld devices.

**ac:ContextItem/attributes/Name:** The <ac:ContextItem> Name attribute MUST be the literal string "ApplicationVersion".

**ac:Value:** The <ac:Value> element MUST be a child of <ac:AdditionalContext> and the value is a string that specifies the application version in the format int.int.int.int.

**ac:ContextItem/attributes/Name:** The <ac:ContextItem> Name attribute MUST be the literal string "DeviceID".

**ac:Value:** The <ac:Value> element MUST be a child of <ac:AdditionalContext> and the value specifies the unique device identifier.

**ac:ContextItem/attributes/Name:** The <ac:ContextItem> Name attribute MUST be the literal string "EnrollmentData".

**ac:Value:** The <ac:Value> element MUST be a child of <ac:AdditionalContext> and the value contains the enrollment data.

**ac:ContextItem/attributes/Name:** The <ac:ContextItem> Name attribute MUST be the literal string "MAC". Multiple MAC addresses are supported if a device has multiple NICs.

**ac:Value:** The <ac:Value> element MUST be a child of <ac:AdditionalContext> and the value is a string (UTF-8) that specifies the MAC address of the device.

**ac:ContextItem/attributes/Name:** The <ac:ContextItem> Name attribute MUST be the literal string "IMEI".

**ac:Value:** The <ac:Value> element MUST be a child of <ac:AdditionalContext> and the value is an int that specifies the mobile equipment ID.

**ac:ContextItem/attributes/Name:** The <ac:ContextItem> Name attribute MUST be the literal string "TargetedUserLoggedIn".

**ac:Value:** The <ac:Value> element MUST be a child of <ac:AdditionalContext> and the value is true or false that indicates whether the user is logged in.

**Namespace:** <http://schemas.xmlsoap.org/ws/2006/12/authorization>

#### 3.4.4.1.1.2 RequestSecurityTokenResponseCollection

The **RequestSecurityTokenResponseCollection** message contains the response for the **RequestSecurityToken** operation.

The SOAP action value is:

<http://schemas.microsoft.com/windows/pki/2009/01/enrollment/RSTRC/wstep>

The **RequestSecurityTokenResponseCollection** message ([\[WSTrust1.3\]](#) section 3.2) is sent from the server to the client and contains the requested certificate and provisioning information.

```
<wsdl:message name="RequestSecurityTokenResponseCollectionMsg">
  <wsdl:part name="responseCollection" element="wst:RequestSecurityTokenResponseCollection"/>
</wsdl:message>
```

**wst:RequestSecurityTokenResponseCollection:** MDE2 modifies the implementation of the **RequestSecurityTokenResponseCollection** message as defined in [\[MS-WSTEP\]](#) section 3.1.4.1.1.2 and its associated protocols.

The following elements and attributes are specified in the SOAP body of the response message.

**wst:RequestSecurityTokenResponseCollection:** The `<wst:RequestSecurityTokenResponseCollection>` element MUST be a child of `<s:Body>`.

**wst:RequestSecurityTokenResponse:** The `<wst:RequestSecurityTokenResponse>` element MUST be a child of `<wst:RequestSecurityTokenResponseCollection>` (see [\[WSTrust1.3\]](#) section 3.2).

**wst:RequestedSecurityToken:** The `<wst:RequestedSecurityToken>` element MUST be a child of `<wst:RequestSecurityTokenResponse>` (see [\[WSTrust1.3\]](#) section 3.2).

**wst:TokenType:** The `<wst:TokenType>` element MUST be a child of `<wst:RequestSecurityTokenResponse>` and the value MUST be "http://schemas.microsoft.com/5.0.0.0/ConfigurationManager/Enrollment/DeviceEnrollmentToken" (see [\[WSTrust1.3\]](#) section 3.1).

**wsse:BinarySecurityToken:** The `<wsse:BinarySecurityToken>` element MUST be a child of `<wst:RequestedSecurityToken>` and MUST contain a base64-encoded **XML** provisioning document that consists of an X509 certificate and provisioning information for the device management client. The provisioning document schema is described in [\[MS-MDE\]](#) section 3.6.

**wsse:BinarySecurityToken/attributes/ValueType:** The `<wsse:BinarySecurityToken>` `ValueType` attribute MUST be "http://schemas.microsoft.com/5.0.0.0/ConfigurationManager/Enrollment/DeviceEnrollmentProvisionDoc".

**wsse:BinarySecurityToken/attributes/EncodingType:** The `<wsse:BinarySecurityToken>` `EncodingType` attribute MUST be "http://docs.oasis-open.org/wss/2004/01/oasis-200401-wss-wssecurity-secext-1.0.xsd#base64binary".

### 3.4.5 Timer Events

None.

### 3.4.6 Other Local Events

None.

## 3.5 Certificate Renewal

### 3.5.1 Abstract Data Model

None.



## 3.5.2 Timers

None.

## 3.5.3 Initialization

None.

## 3.5.4 Message Processing Events and Sequencing Rules

The WSDL operations for certificate renewal are as specified in section [3.4.4](#).

### 3.5.4.1 RequestSecurityToken Operation

MDE2 does not modify the RequestSecurityToken operation for the certificate renewal process. The operation is as specified in section [3.4.4.1](#).

#### 3.5.4.1.1 Messages

MDE2 does not modify the set of messages for the RequestSecurityToken operation for the certificate renewal process. The set of messages are as specified in section [3.4.4.1.1](#).

##### 3.5.4.1.1.1 RequestSecurityToken

For the certificate renewal process, MDE2 modifies the **RequestSecurityToken** message as follows. The remainder of the definition for the **RequestSecurityToken** message is as specified in section [3.4.4.1.1.1](#).

Because the enrollment client uses the existing certificate to perform client **Transport Layer Security (TLS)**, the security token is not populated in the SOAP header. As a result, the ES is required to support client TLS.

Authentication MUST be implemented for this message as defined in section [3.4](#). In summary, the following elements and attributes MUST be specified in the SOAP header:

**wsse:Security:** The <wsse:Security> element MUST be a child of <s:Header>.

**wsse:UsernameToken:** The <wsse: UsernameToken> element MUST be a child of <wsse:Security> in <s:Header>.

**wsse:UsernameToken/attributes/u:Id:** The type MUST be "uuid-cc1ccc1f-2fba-4bcf-b063-ffc0cac77917-4" for on-premise authentication.

**wsse:UserName:** The <wsse: Username> element MUST be a child of <wsse:UsernameToken> in <s:Header> and the value specifies the user name.

**wsse:Password:** The <wsse: Password> element MUST be a child of <wsse:UsernameToken> in <s:Header> and the value specifies the user password.

**wsse:Password/attributes/Type:** This value MUST be "http://docs.oasis-open.org/wss/2004/01/oasis-200401-wss-username-token-profile-1.0#PasswordText"

Namespace: <http://docs.oasis-open.org/wss/2004/01/oasis-200401-wss-wssecurity-secext-1.0.xsd>

The following elements and attributes are specified in the SOAP body of the request message.

**wst:RequestType:** The <wst:RequestType> element MUST be the value "http://docs.oasis-open.org/ws-sx/ws-trust/200512/Renew" (see [\[WSTrust1.3\]](#) section 3.1).

**wsse:BinarySecurityToken/attributes/ValueType:** The <wsse:BinarySecurityToken> ValueType attribute MUST be "http://docs.oasis-open.org/wss/2004/01/oasis-200401-wss-wssecurity-secext-1.0.xsd#PKCS7".

**wsse:BinarySecurityToken/attributes/EncodingType:** The <wsse:BinarySecurityToken> EncodingType attribute MUST be "http://docs.oasis-open.org/wss/2004/01/oasis-200401-wss-wssecurity-secext-1.0.xsd#base64binary".

**ac:AdditionalContext:** The <ac:AdditionalContext> element MUST be a child of <wst:RequestSecurityToken> (see [\[MS-WSTEP\]](#) section 3.1.4.1.3.3).

**ac:AdditionalContext:** The <ac:AdditionalContext> element MUST be a child of <s:body>

**ac:ContextItem:** One or more <ac:ContextItem> Name attributes MUST be specified as child elements of <ac:AdditionalContext >.

**ac:ContextItem/attributes/Name:** The <ac:ContextItem> Name attribute MUST be the literal string "OSEdition".

**ac:Value:** The <ac:Value> element MUST be a child of <ac:AdditionalContext> and the value MUST be set to the decimal value as an int of the product enumeration defined in section [2.2.9.6](#).

**ac:ContextItem/attributes/Name:** The <ac:ContextItem> Name attribute MUST be the literal string "OSVersion".

**ac:Value:** The <ac:Value> element MUST be a child of <ac:AdditionalContext> and the value is a string (UTF-8) in the format int.int.int.int.

**ac:ContextItem/attributes/Name:** The <ac:ContextItem> Name attribute MUST be the literal string "DeviceName".

**ac:Value:** The <ac:Value> element MUST be a child of <ac:AdditionalContext> and the value is a string (UTF-8) name of the device.

**ac:ContextItem/attributes/Name:** The <ac:ContextItem> Name attribute MUST be the literal string "EnrollmentType".

**ac:Value:** The <ac:Value> element MUST be a child of <ac:AdditionalContext> and the value is a string (UTF-8) that MUST be Full or Device.

**ac:ContextItem/attributes/Name:** The <ac:ContextItem> Name attribute MUST be the literal string "DeviceType".

**ac:Value:** The <ac:Value> element MUST be a child of <ac:AdditionalContext> and the value is a string (UTF 8) that MUST be WindowsPhone for mobile devices, CIMClient\_Windows for desktop devices, or WindowsHandheld for enterprise handheld devices.

**ac:ContextItem/attributes/Name:** The <ac:ContextItem> Name attribute MUST be the literal string "ApplicationVersion".

**ac:Value:** The <ac:Value> element MUST be a child of <ac:AdditionalContext> and the value is a string that specifies the application version in the format int.int.int.int.

**ac:ContextItem/attributes/Name:** The <ac:ContextItem> Name attribute MUST be the literal string "DeviceID".

**ac:Value:** The <ac:Value> element MUST be a child of <ac:AdditionalContext> and the value specifies the unique device identifier.

The following elements and attributes are specified in the SOAP header:

**ac:ContextItem/attributes/Name:** The <ac:ContextItem> Name attribute MUST be the literal string "MAC". Multiple MAC addresses are supported if a device has multiple NICs.

**ac:Value:** The <ac:Value> element MUST be a child of <ac:AdditionalContext> and the value is a string (UTF-8) that specifies the MAC address of the device.

**ac:ContextItem/attributes/Name:** The <ac:ContextItem> Name attribute MUST be the literal string "IMEI".

**ac:Value:** The <ac:Value> element MUST be a child of <ac:AdditionalContext> and the value is an int that specifies the mobile equipment ID.

### 3.5.4.1.1.2 RequestSecurityTokenCollectionResponse

Note: Some of the information in this section is subject to change because it applies to an unreleased, preliminary version of the Windows Server operating system, and thus may differ from the final version of the server software when released. All behavior notes that pertain to the unreleased, preliminary version of the Windows Server operating system contain specific references to Windows Server 2016 Technical Preview in the Product Behavior appendix.

For the certificate renewal process, MDE2 modifies the RequestSecurityTokenCollectionResponse message as follows. The remainder of the definition for the RequestSecurityTokenCollectionResponse message is as specified in section [3.4.4.1.1.3](#).

For the certificate renewal process, the same provisioning document is used as specified in section [2.2.9.1](#). However, only the CertificateStore/My/User/EncodedCertificate is returned.

```
<characteristic type="CertificateStore">
  <!-- Root certificate provision is only needed here if it is not in the device already -->
  <characteristic type="Root">
    <characteristic type="System">
      <characteristic type="EncodedRootCertHashInsertedHere ">
        <parm name="EncodedCertificate" value="EncodedCertInsertedHere" />
      </characteristic>
    </characteristic>
  </characteristic>
  <characteristic type="My" >
    <characteristic type="User">
      <characteristic type="EncodedClientCertHashInsertedHere">
        <parm name="EncodedCertificate" value="EncodedCertInsertedHere" />
        <characteristic type="PrivateKeyContainer"/>
      </characteristic>
    </characteristic>
  </characteristic>
</characteristic>
```

### 3.5.5 Timer Events

None.

### 3.5.6 Other Local Events

None.

## 4 Protocol Examples

### 4.1 Discovery Example

The following example is a full request/response sequence using the Discovery protocol to auto-discover a management enrollment server based on the user's email address.

#### 4.1.1 Discovery Example: Request

Note: Some of the information in this section is subject to change because it applies to an unreleased, preliminary version of the Windows Server operating system, and thus may differ from the final version of the server software when released. All behavior notes that pertain to the unreleased, preliminary version of the Windows Server operating system contain specific references to Windows Server 2016 Technical Preview in the Product Behavior appendix.

The following sections are examples of requests using different authentication methods.

##### 4.1.1.1 Discovery Example Request Using Federated Authentication

Note: All of the information in this section is subject to change because it applies to an unreleased, preliminary version of the Windows Server operating system, and thus may differ from the final version of the server software when released. All behavior notes that pertain to the unreleased, preliminary version of the Windows Server operating system contain specific references to Windows Server 2016 Technical Preview as an aid to the reader.

The following snippet demonstrates the call to the Discovery input message using <AuthPolicy> "Federated".

```
<?xml version="1.0"?>
<s:Envelope xmlns:a="http://www.w3.org/2005/08/addressing"
  xmlns:s="http://www.w3.org/2003/05/soap-envelope">
  <s:Header>
    <a:Action s:mustUnderstand="1">
      http://schemas.microsoft.com/windows/management/2012/01/enrollment/IDiscoveryService/Discover
    </a:Action>
    <a:MessageID>urn:uuid: 748132ec-a575-4329-b01b-6171a9cf8478</a:MessageID>
    <a:ReplyTo>
      <a:Address>http://www.w3.org/2005/08/addressing/anonymous</a:Address>
    </a:ReplyTo>
    <a:To s:mustUnderstand="1">
      https://ENROLLTEST.CONTOSO.COM/EnrollmentServer/Discovery.svc
    </a:To>
  </s:Header>
  <s:Body>
    <Discover xmlns="http://schemas.microsoft.com/windows/management/2012/01/enrollment/">
      <request xmlns:i="http://www.w3.org/2001/XMLSchema-instance">
        <EmailAddress>user@contoso.com</EmailAddress>
        <OSEdition>3</OSEdition> <!--New -->
        <RequestVersion>3.0</RequestVersion> <!-- Updated -->
        <DeviceType>WindowsPhone</DeviceType> <!--Updated -->
        <ApplicationVersion>10.0.0.0</ApplicationVersion>
        <AuthPolicies>
          <AuthPolicy>OnPremise</AuthPolicy>
          <AuthPolicy>Federated</AuthPolicy>
        </AuthPolicies>
      </request>
    </Discover>
  </s:Body>
```

#### 4.1.1.2 Discovery Example Request Using Certificate Authentication

Note: All of the information in this section is subject to change because it applies to an unreleased, preliminary version of the Windows Server operating system, and thus may differ from the final version of the server software when released. All behavior notes that pertain to the unreleased, preliminary version of the Windows Server operating system contain specific references to Windows Server 2016 Technical Preview as an aid to the reader.

The following snippet demonstrates the call to the Discovery input message using <AuthPolicy> "Certificate".

```
<?xml version="1.0"?>
<s:Envelope xmlns:a="http://www.w3.org/2005/08/addressing"
  xmlns:s="http://www.w3.org/2003/05/soap-envelope">
  <s:Header>
    <a:Action s:mustUnderstand="1">

http://schemas.microsoft.com/windows/management/2012/01/enrollment/IDiscoveryService/Discover
  </a:Action>
    <a:MessageID>urn:uuid: 748132ec-a575-4329-b01b-6171a9cf8478</a:MessageID>
    <a:ReplyTo>
      <a:Address>http://www.w3.org/2005/08/addressing/anonymous</a:Address>
    </a:ReplyTo>
    <a:To s:mustUnderstand="1">
      https://ENROLLTEST.CONTOSO.COM/EnrollmentServer/Discovery.svc
    </a:To>
  </s:Header>
  <s:Body>
    <Discover xmlns="http://schemas.microsoft.com/windows/management/2012/01/enrollment/">
      <request xmlns:i="http://www.w3.org/2001/XMLSchema-instance">
        <EmailAddress>user@contoso.com</EmailAddress>
        <OSEdition>3</OSEdition> <!--New -->
        <RequestVersion>3.0</RequestVersion> <!-- Updated -->
        <DeviceType>WindowsPhone</DeviceType> <!--Updated -->
        <ApplicationVersion>10.0.0.0</ApplicationVersion>
        <AuthPolicies>
          <AuthPolicy>Certificate</AuthPolicy>
        </AuthPolicies>
      </request>
    </Discover>
  </s:Body>
</s:Envelope>
```

#### 4.1.1.3 Discovery Example Request Using On-Premise Authentication

Note: All of the information in this section is subject to change because it applies to an unreleased, preliminary version of the Windows Server operating system, and thus may differ from the final version of the server software when released. All behavior notes that pertain to the unreleased, preliminary version of the Windows Server operating system contain specific references to Windows Server 2016 Technical Preview as an aid to the reader.

The following snippet demonstrates the call to the Discovery input message using <AuthPolicy> "OnPremise".

```
<?xml version="1.0"?>
<s:Envelope xmlns:a="http://www.w3.org/2005/08/addressing"
  xmlns:s="http://www.w3.org/2003/05/soap-envelope">
  <s:Header>
    <a:Action s:mustUnderstand="1">

http://schemas.microsoft.com/windows/management/2012/01/enrollment/IDiscoveryService/Discover
```

```

</a:Action>
<a:MessageID>urn:uuid: 748132ec-a575-4329-b01b-6171a9cf8478</a:MessageID>
<a:ReplyTo>
  <a:Address>http://www.w3.org/2005/08/addressing/anonymous</a:Address>
</a:ReplyTo>
<a:To s:mustUnderstand="1">
  https://ENROLLTEST.CONTOSO.COM/EnrollmentServer/Discovery.svc
</a:To>
</s:Header>
<s:Body>
  <Discover xmlns="http://schemas.microsoft.com/windows/management/2012/01/enrollment/">
    <request xmlns:i="http://www.w3.org/2001/XMLSchema-instance">
      <EmailAddress>user@contoso.com</EmailAddress>
      <OSEdition>3</OSEdition> <!--New -->
      <RequestVersion>3.0</RequestVersion> <!-- Updated -->
      <DeviceType>WindowsPhone</DeviceType> <!--Updated -->
      <ApplicationVersion>10.0.0.0</ApplicationVersion>
      <AuthPolicies>
        <AuthPolicy>OnPremise</AuthPolicy>
      </AuthPolicies>
    </request>
  </Discover>
</s:Body>
</s:Envelope>

```

## 4.1.2 Discovery Example: Response

Note: All of the information in this section is subject to change because it applies to an unreleased, preliminary version of the Windows Server operating system, and thus may differ from the final version of the server software when released. All behavior notes that pertain to the unreleased, preliminary version of the Windows Server operating system contain specific references to Windows Server 2016 Technical Preview as an aid to the reader.

The following sections are examples of responses using different authentication methods.

### 4.1.2.1 Discovery Example Response using Federated Authentication

Note: All of the information in this section is subject to change because it applies to an unreleased, preliminary version of the Windows Server operating system, and thus may differ from the final version of the server software when released. All behavior notes that pertain to the unreleased, preliminary version of the Windows Server operating system contain specific references to Windows Server 2016 Technical Preview as an aid to the reader.

The following snippet demonstrates the call to the Discovery output message using <AuthPolicy> "Federated".

```

<s:Envelope xmlns:s="http://www.w3.org/2003/05/soap-envelope"
  xmlns:a="http://www.w3.org/2005/08/addressing">
  <s:Header>
    <a:Action s:mustUnderstand="1">
      http://schemas.microsoft.com/windows/management/2012/01/enrollment/IDiscoveryService/Discover
      Response
    </a:Action>
    <ActivityId>
      d9eb2fdd-e38a-46ee-bd93-aea9dc86a3b8
    </ActivityId>
    <a:RelatesTo>urn:uuid: 748132ec-a575-4329-b01b-6171a9cf8478</a:RelatesTo>
  </s:Header>
  <s:Body xmlns:xsi="http://www.w3.org/2001/XMLSchema-instance"
    xmlns:xsd="http://www.w3.org/2001/XMLSchema">
    <DiscoverResponse

```

```

    xmlns="http://schemas.microsoft.com/windows/management/2012/01/enrollment">
  <DiscoverResult>
    <AuthPolicy>Federated</AuthPolicy>
    <EnrollmentVersion>3.0</EnrollmentVersion>
    <EnrollmentPolicyServiceUrl>
      https://enrolltest.contoso.com/ENROLLMENTSERVER/DEVICEENROLLMENTWEBSERVICE.SVC
    </EnrollmentPolicyServiceUrl>
    <EnrollmentServiceUrl>
      https://enrolltest.contoso.com/ENROLLMENTSERVER/DEVICEENROLLMENTWEBSERVICE.SVC
    </EnrollmentServiceUrl>
    <AuthenticationServiceUrl>
      https://portal.manage.contoso.com/LoginRedirect.aspx
    </AuthenticationServiceUrl>
  </DiscoverResult>
</DiscoverResponse>
</s:Body>
</s:Envelope>

```

#### 4.1.2.2 Discovery Example Response using Certificate Authentication

Note: All of the information in this section is subject to change because it applies to an unreleased, preliminary version of the Windows Server operating system, and thus may differ from the final version of the server software when released. All behavior notes that pertain to the unreleased, preliminary version of the Windows Server operating system contain specific references to Windows Server 2016 Technical Preview as an aid to the reader.

The following snippet demonstrates the call to the Discovery output message using <AuthPolicy> "Certificate".

```

<s:Envelope xmlns:s="http://www.w3.org/2003/05/soap-envelope"
  xmlns:a="http://www.w3.org/2005/08/addressing">
  <s:Header>
    <a:Action s:mustUnderstand="1">
      http://schemas.microsoft.com/windows/management/2012/01/enrollment/IDiscoveryService/Discover
      Response
    </a:Action>
    <ActivityId>
      d9eb2fdd-e38a-46ee-bd93-aea9dc86a3b8
    </ActivityId>
    <a:RelatesTo>urn:uuid: 748132ec-a575-4329-b01b-6171a9cf8478</a:RelatesTo>
  </s:Header>
  <s:Body xmlns:xsi="http://www.w3.org/2001/XMLSchema-instance"
    xmlns:xsd="http://www.w3.org/2001/XMLSchema">
    <DiscoverResponse
      xmlns="http://schemas.microsoft.com/windows/management/2012/01/enrollment">
      <DiscoverResult>
        <AuthPolicy>Certificate</AuthPolicy>
        <EnrollmentVersion>3.0</EnrollmentVersion>
        <EnrollmentPolicyServiceUrl>
          https://enrolltest.contoso.com/ENROLLMENTSERVER/DEVICEENROLLMENTWEBSERVICE.SVC
        </EnrollmentPolicyServiceUrl>
        <EnrollmentServiceUrl>
          https://enrolltest.contoso.com/ENROLLMENTSERVER/DEVICEENROLLMENTWEBSERVICE.SVC
        </EnrollmentServiceUrl>
      </DiscoverResult>
    </DiscoverResponse>
  </s:Body>
</s:Envelope>

```

### 4.1.2.3 Discovery Example Response using On-Premise Authentication

Note: All of the information in this section is subject to change because it applies to an unreleased, preliminary version of the Windows Server operating system, and thus may differ from the final version of the server software when released. All behavior notes that pertain to the unreleased, preliminary version of the Windows Server operating system contain specific references to Windows Server 2016 Technical Preview as an aid to the reader.

The following snippet demonstrates the call to the Discovery output message using <AuthPolicy> "OnPremise".

```
<s:Envelope xmlns:s="http://www.w3.org/2003/05/soap-envelope"
  xmlns:a="http://www.w3.org/2005/08/addressing">
  <s:Header>
    <a:Action s:mustUnderstand="1">
      http://schemas.microsoft.com/windows/management/2012/01/enrollment/IDiscoveryService/Discover
      Response
    </a:Action>
    <ActivityId>
      d9eb2fdd-e38a-46ee-bd93-aea9dc86a3b8
    </ActivityId>
    <a:RelatesTo>urn:uuid: 748132ec-a575-4329-b01b-6171a9cf8478</a:RelatesTo>
  </s:Header>
  <s:Body xmlns:xsi="http://www.w3.org/2001/XMLSchema-instance"
    xmlns:xsd="http://www.w3.org/2001/XMLSchema">
    <DiscoverResponse
      xmlns="http://schemas.microsoft.com/windows/management/2012/01/enrollment">
      <DiscoverResult>
        <AuthPolicy>OnPremise</AuthPolicy>

        <EnrollmentVersion>3.0</EnrollmentVersion>
        <EnrollmentPolicyServiceUrl>
          https://enrolltest.contoso.com/ENROLLMENTSERVER/DEVICEENROLLMENTWEBSERVICE.SVC
        </EnrollmentPolicyServiceUrl>
        <EnrollmentServiceUrl>
          https://enrolltest.contoso.com/ENROLLMENTSERVER/DEVICEENROLLMENTWEBSERVICE.SVC
        </EnrollmentServiceUrl>
      </DiscoverResult>
    </DiscoverResponse>
  </s:Body>
</s:Envelope>
```

## 4.2 GetPolicies Example

The following example is a full request/response sequence where the caller requests certificate policies that are used to determine if the enrollment service is compliant with the caller's requirements.

### 4.2.1 GetPolicies Example: Request

Note: Some of the information in this section is subject to change because it applies to an unreleased, preliminary version of the Windows Server operating system, and thus may differ from the final version of the server software when released. All behavior notes that pertain to the unreleased, preliminary version of the Windows Server operating system contain specific references to Windows Server 2016 Technical Preview in the Product Behavior appendix.



The following subsections demonstrate the call to the **GetPolicies** message (section [3.3.4.1.1.1](#)) using different authentication methods.

#### 4.2.1.1 GetPolicies Example Request using Federated Authentication

Note: All of the information in this section is subject to change because it applies to an unreleased, preliminary version of the Windows Server operating system, and thus may differ from the final version of the server software when released. All behavior notes that pertain to the unreleased, preliminary version of the Windows Server operating system contain specific references to Windows Server 2016 Technical Preview as an aid to the reader.

The following snippet demonstrates a call to the GetPolicies message using `<AuthPolicy> "Federated"`.

```
<s:Envelope xmlns:s="http://www.w3.org/2003/05/soap-envelope"
  xmlns:a="http://www.w3.org/2005/08/addressing"
  xmlns:u="http://docs.oasis-open.org/wss/2004/01/oasis-200401-wss-wssecurity-utility-
1.0.xsd"
  xmlns:wsse="http://docs.oasis-open.org/wss/2004/01/oasis-200401-wss-wssecurity-secext-
1.0.xsd"
  xmlns:wst="http://docs.oasis-open.org/ws-sx/ws-trust/200512"
  xmlns:ac="http://schemas.xmlsoap.org/ws/2006/12/authorization">
  <s:Header>
    <a:Action s:mustUnderstand="1">
      http://schemas.microsoft.com/windows/pki/2009/01/enrollmentpolicy/IPolicy/GetPolicies
    </a:Action>
    <a:MessageID>urn:uuid:72048B64-0F19-448F-8C2E-B4C661860AA0</a:MessageID>
    <a:ReplyTo>
      <a:Address>http://www.w3.org/2005/08/addressing/anonymous</a:Address>
    </a:ReplyTo>
    <a:To s:mustUnderstand="1">
      https://enrolltest.contoso.com/ENROLLMENTSERVER/DEVICEENROLLMENTWEBSERVICE.SVC
    </a:To>
    <wsse:Security s:mustUnderstand="1">
      <wsse:BinarySecurityToken ValueType=
"http:
//schemas.microsoft.com/5.0.0.0/ConfigurationManager/Enrollment/DeviceEnrollmentUserToken"
      EncodingType=
"http://docs.oasis-open.org/wss/2004/01/oasis-200401-wss-wssecurity-secext-
1.0.xsd#base64binary"
      xmlns=
"http://docs.oasis-open.org/wss/2004/01/oasis-200401-wss-wssecurity-secext-1.0.xsd">
      B64EncodedSampleBinarySecurityToken
    </wsse:BinarySecurityToken>
    </wsse:Security>
  </s:Header>
  <s:Body xmlns:xsi="http://www.w3.org/2001/XMLSchema-instance"
  xmlns:xsd="http://www.w3.org/2001/XMLSchema">
    <GetPolicies
      xmlns="http://schemas.microsoft.com/windows/pki/2009/01/enrollmentpolicy">
      <client>
        <lastUpdate xsi:nil="true"/>
        <preferredLanguage xsi:nil="true"/>
      </client>
      <requestFilter xsi:nil="true"/>
    </GetPolicies>
  </s:Body>
</s:Envelope>
```

#### 4.2.1.2 GetPolicies Example Request using Certificate Authentication

Note: All of the information in this section is subject to change because it applies to an unreleased, preliminary version of the Windows Server operating system, and thus may differ from the final

version of the server software when released. All behavior notes that pertain to the unreleased, preliminary version of the Windows Server operating system contain specific references to Windows Server 2016 Technical Preview as an aid to the reader.

The following snippet demonstrates a call to the GetPolicies message using <AuthPolicy> "Certificate".

```
<s:Envelope xmlns:s="http://www.w3.org/2003/05/soap-envelope"
  xmlns:a="http://www.w3.org/2005/08/addressing"
  xmlns:u="http://docs.oasis-open.org/wss/2004/01/oasis-200401-wss-wssecurity-utility-1.0.xsd"
  xmlns:wsse="http://docs.oasis-open.org/wss/2004/01/oasis-200401-wss-wssecurity-secext-1.0.xsd"
  xmlns:wst="http://docs.oasis-open.org/ws-sx/ws-trust/200512"
  xmlns:ac="http://schemas.xmlsoap.org/ws/2006/12/authorization">
  <s:Header>
    <a:Action s:mustUnderstand="1">
      http://schemas.microsoft.com/windows/pki/2009/01/enrollmentpolicy/IPolicy/GetPolicies
    </a:Action>
    <a:MessageID>urn:uuid:72048B64-0F19-448F-8C2E-B4C661860AA0</a:MessageID>
    <a:ReplyTo>
      <a:Address>http://www.w3.org/2005/08/addressing/anonymous</a:Address>
    </a:ReplyTo>
    <a:To s:mustUnderstand="1">
      https://enrolltest.contoso.com/ENROLLMENTSERVER/DEVICEENROLLMENTWEBSERVICE.SVC
    </a:To>
    <wsse:Security s:mustUnderstand="1">
      <u:Timestamp>
        <u:Created>2015-06-13T21:13:37Z</u:Created>
        <u:Expires>2015-06-13T21:18:37Z</u:Expires>
      </u:Timestamp>
      <wsse:BinarySecurityToken ValueType=" http://docs.oasis-open.org/wss/2004/01/oasis-200401-wss-x509-token-profile-1.0#X509v3" Id="uuid-29801C2F-F26B-46AD-984B-AFAEFB545FF8" EncodingType="http://docs.oasis-open.org/wss/2004/01/oasis-200401-wss-wssecurity-secext-1.0.xsd#base64binary">B64EncodedSampleBinarySecurityToken
    </wsse:BinarySecurityToken>
    <Signature xmlns="http://www.w3.org/2000/09/xmldsig#">

      <SignedInfo>
        <CanonicalizationMethod Algorithm="http://www.w3.org/2001/10/xml-exc-c14n#" />
        <SignatureMethod Algorithm="http://www.w3.org/2001/04/xmldsig-more#rsa-sha256" />
        <Reference URI="">
          <Transforms>
            <Transform Algorithm="http://www.w3.org/2000/09/xmldsig#enveloped-signature" />
          </Transforms>
          <DigestMethod Algorithm="http://www.w3.org/2001/04/xmlenc#sha256" />
          <DigestValue>hash</DigestValue>
        </Reference>
      </SignedInfo>
      <SignatureValue>signature</SignatureValue>
      <KeyInfo>
        <wsse:SecurityTokenReference>
          <wsse:Reference URI="29801C2F-F26B-46AD-984B-AFAEFB545FF8"
            ValueType="http://docs.oasis-open.org/wss/2004/01/oasis-200401-wss-x509-token-profile-1.0#X509" />
        </wsse:SecurityTokenReference>
      </KeyInfo>

    </Signature>
  </wsse:Security>
</s:Header>
<s:Body xmlns:xsi="http://www.w3.org/2001/XMLSchema-instance"
  xmlns:xsd="http://www.w3.org/2001/XMLSchema">
  <GetPolicies
    xmlns="http://schemas.microsoft.com/windows/pki/2009/01/enrollmentpolicy">
    <client>
      <lastUpdate xsi:nil="true"/>
      <preferredLanguage xsi:nil="true"/>
    </client>
  </GetPolicies>
</s:Body>
</s:Envelope>
```

```

    </client>
    <requestFilter xsi:nil="true"/>
  </GetPolicies>
</s:Body>
</s:Envelope>

```

### 4.2.1.3 GetPolicies Example Request using On-Premise Authentication

Note: All of the information in this section is subject to change because it applies to an unreleased, preliminary version of the Windows Server operating system, and thus may differ from the final version of the server software when released. All behavior notes that pertain to the unreleased, preliminary version of the Windows Server operating system contain specific references to Windows Server 2016 Technical Preview as an aid to the reader.

The following snippet demonstrates a call to the GetPolicies message using <AuthPolicy> "OnPremise".

```

<s:Envelope xmlns:s="http://www.w3.org/2003/05/soap-envelope"
  xmlns:a="http://www.w3.org/2005/08/addressing"
  xmlns:u="http://docs.oasis-open.org/wss/2004/01/oasis-200401-wss-wssecurity-utility-
1.0.xsd"
  xmlns:wsse="http://docs.oasis-open.org/wss/2004/01/oasis-200401-wss-wssecurity-secext-
1.0.xsd"
  xmlns:wst="http://docs.oasis-open.org/ws-sx/ws-trust/200512"
  xmlns:ac="http://schemas.xmlsoap.org/ws/2006/12/authorization">
  <s:Header>
    <a:Action s:mustUnderstand="1">
      http://schemas.microsoft.com/windows/pki/2009/01/enrollmentpolicy/IPolicy/GetPolicies
    </a:Action>
    <a:MessageID>urn:uuid:72048B64-0F19-448F-8C2E-B4C661860AA0</a:MessageID>
    <a:ReplyTo>
      <a:Address>http://www.w3.org/2005/08/addressing/anonymous</a:Address>
    </a:ReplyTo>
    <a:To s:mustUnderstand="1">
      https://enrolltest.contoso.com/ENROLLMENTSERVER/DEVICEENROLLMENTWEBSERVICE.SVC
    </a:To>
    <wsse:Security s:mustUnderstand="1">
      <wsse:UsernameToken u:Id="uuid-cclccc1f-2fba-4bcf-b063-ffc0cac77917-4">
        <wsse:Username>user@contoso.com</wsse:Username>
        <wsse:Password wsse:Type="http://docs.oasis-open.org/wss/2004/01/oasis-200401-wss-
username-token-profile-1.0#PasswordText">mypassword</wsse:Password>
      </wsse:UsernameToken>
    </wsse:Security>
  </s:Header>
  <s:Body xmlns:xsi="http://www.w3.org/2001/XMLSchema-instance"
    xmlns:xsd="http://www.w3.org/2001/XMLSchema">
    <GetPolicies
      xmlns="http://schemas.microsoft.com/windows/pki/2009/01/enrollmentpolicy">
      <client>
        <lastUpdate xsi:nil="true"/>
        <preferredLanguage xsi:nil="true"/>
      </client>
      <requestFilter xsi:nil="true"/>
    </GetPolicies>
  </s:Body>
</s:Envelope>

```

### 4.2.2 GetPolicies Example: Response

Note: Some of the information in this section is subject to change because it applies to an unreleased, preliminary version of the Windows Server operating system, and thus may differ from the final version of the server software when released. All behavior notes that pertain to the unreleased,

preliminary version of the Windows Server operating system contain specific references to Windows Server 2016 Technical Preview in the Product Behavior appendix.

The following snippet demonstrates the call to the **GetPoliciesResponse** message.

```
<s:Envelope
  xmlns:u="http://docs.oasis-open.org/wss/2004/01/oasis-200401-wss-wssecurity-utility-
1.0.xsd"
  xmlns:s="http://www.w3.org/2003/05/soap-envelope"
  xmlns:a="http://www.w3.org/2005/08/addressing">
  <s:Header>
    <a:Action s:mustUnderstand="1">
      http://schemas.microsoft.com/windows/pki/2009/01/enrollmentpolicy/IPolicy/GetPoliciesResponse
    </a:Action>
    <a:RelatesTo>urn:uuid: 69960163-adad-4a72-82d2-bb0e5cff5598</a:RelatesTo>
  </s:Header>
  <s:Body xmlns:xsi="http://www.w3.org/2001/XMLSchema-instance"
    xmlns:xsd="http://www.w3.org/2001/XMLSchema">
    <GetPoliciesResponse
      xmlns="http://schemas.microsoft.com/windows/pki/2009/01/enrollmentpolicy">
      <response>
      <policyID />
      <policyFriendlyName xsi:nil="true"
        xmlns:xsi="http://www.w3.org/2001/XMLSchema-instance"/>
      <nextUpdateHours xsi:nil="true"
        xmlns:xsi="http://www.w3.org/2001/XMLSchema-instance"/>
      <policiesNotChanged xsi:nil="true"
        xmlns:xsi="http://www.w3.org/2001/XMLSchema-instance"/>
      <policies>
      <policy>
      <policyOIDReference>0</policyOIDReference>
      <cAs xsi:nil="true" />
      <attributes>
      <commonName>CEPUnitTest</commonName>
      <policySchema>3</policySchema>
      <certificateValidity>
      <validityPeriodSeconds>1209600</validityPeriodSeconds>
      <renewalPeriodSeconds>172800</renewalPeriodSeconds>
      </certificateValidity>
      <permission>
      <enroll>true</enroll>
      <autoEnroll>>false</autoEnroll>
      </permission>
      <privateKeyAttributes>
      <minimalKeyLength>2048</minimalKeyLength>
      <keySpec xsi:nil="true" />
      <keyUsageProperty xsi:nil="true" />
      <permissions xsi:nil="true" />
      <algorithmOIDReference xsi:nil="true" />
      <cryptoProviders xsi:nil="true" />
      </privateKeyAttributes>
      <revision>
      <majorRevision>101</majorRevision>
      <minorRevision>0</minorRevision>
      </revision>
      <supersededPolicies xsi:nil="true" />
      <privateKeyFlags xsi:nil="true" />
      <subjectNameFlags xsi:nil="true" />
      <enrollmentFlags xsi:nil="true" />
      <generalFlags xsi:nil="true" />
      <hashAlgorithmOIDReference>0</hashAlgorithmOIDReference>
      <rARequirements xsi:nil="true" />
      <keyArchivalAttributes xsi:nil="true" />
      <extensions xsi:nil="true" />
      </attributes>
      </policy>
      </policies>
    </GetPoliciesResponse>
  </s:Body>
</s:Envelope>
```

```

</response>
<cAs xsi:nil="true" />
<oIDs>
  <oID>
    <value>1.3.14.3.2.29</value>
    <group>1</group>
    <oIDReferenceID>0</oIDReferenceID>
    <defaultName>szOID_OIWSEC_sha1RSASign</defaultName>
  </oID>
</oIDs>
</GetPoliciesResponse>
</s:Body>
</s:Envelope>

```

### 4.3 RequestSecurityToken Example

The following example is a full request/response sequence where the caller requests a security token (provisioning document) for the device type "CIMClient\_Windows".

#### 4.3.1 RequestSecurityToken Example: Request

Note: Some of the information in this section is subject to change because it applies to an unreleased, preliminary version of the Windows Server operating system, and thus may differ from the final version of the server software when released. All behavior notes that pertain to the unreleased, preliminary version of the Windows Server operating system contain specific references to Windows Server 2016 Technical Preview in the Product Behavior appendix.

The following sections demonstrate the call to the **RequestSecurityToken** message using different authentication methods.

##### 4.3.1.1 RequestSecurityToken Example: Request using Federated Authentication

Note: All of the information in this section is subject to change because it applies to an unreleased, preliminary version of the Windows Server operating system, and thus may differ from the final version of the server software when released. All behavior notes that pertain to the unreleased, preliminary version of the Windows Server operating system contain specific references to Windows Server 2016 Technical Preview as an aid to the reader.

The following snippet demonstrates the call to the **RequestSecurityToken** message using <AuthPolicy> "Federated".

```

<s:Envelope xmlns:s="http://www.w3.org/2003/05/soap-envelope"
  xmlns:a="http://www.w3.org/2005/08/addressing"
  xmlns:u="http://docs.oasis-open.org/wss/2004/01/oasis-200401-wss-wssecurity-utility-
1.0.xsd"
  xmlns:wsse="http://docs.oasis-open.org/wss/2004/01/oasis-200401-wss-wssecurity-secext-
1.0.xsd"
  xmlns:wst="http://docs.oasis-open.org/ws-sx/ws-trust/200512"
  xmlns:ac="http://schemas.xmlsoap.org/ws/2006/12/authorization">
  <s:Header>
    <a:Action s:mustUnderstand="1">
      http://schemas.microsoft.com/windows/pki/2009/01/enrollment/RST/wstep
    </a:Action>
    <a:MessageID>urn:uuid:0d5a1441-5891-453b-becf-a2e5f6ea3749</a:MessageID>
    <a:ReplyTo>
      <a:Address>http://www.w3.org/2005/08/addressing/anonymous</a:Address>
    </a:ReplyTo>
    <a:To s:mustUnderstand="1">
      https://enrolltest.contoso.com:443/ENROLLMENTSERVER/DEVICEENROLLMENTWEBSERVICE.SVC
    </a:To>

```

```

    <wsse:Security s:mustUnderstand="1">
      <wsse:BinarySecurityToken wsse:ValueType=
"http://schemas.microsoft.com/5.0.0.0/ConfigurationManager/Enrollment/DeviceEnrollmentUserTo
ken
      wsse:EncodingType=
      http://docs.oasis-open.org/wss/2004/01/oasis-200401-wss-wssecurity-secext-
1.0.xsd#base64binary"
    >
      B64EncodedSampleBinarySecurityToken
    </wsse:BinarySecurityToken>
  </wsse:Security>
</s:Header>
<s:Body>
  <wst:RequestSecurityToken>
    <wst:TokenType>
      http://schemas.microsoft.com/5.0.0.0/ConfigurationManager/Enrollment/DeviceEnrollmentToken
    </wst:TokenType>
    <wst:RequestType>
      http://docs.oasis-open.org/ws-sx/ws-trust/200512/Issue
    </wst:RequestType>
    <wsse:BinarySecurityToken
      ValueType="http://schemas.microsoft.com/windows/pki/2009/01/enrollment#PKCS10"
      EncodingType="http://docs.oasis-open.org/wss/2004/01/oasis-200401-wss-wssecurity-
secext-1.0.xsd#base64binary">
      DER format PKCS#10 certificate request in Base64 encoding Insterted Here
    </wsse:BinarySecurityToken>
    <ac:AdditionalContext xmlns="http://schemas.xmlsoap.org/ws/2006/12/authorization">
      <ac:ContextItem Name="OSEdition">
        <ac:Value> 4</ac:Value>
      </ac:ContextItem>
      <ac:ContextItem Name="OSVersion">
        <ac:Value>10.0.9999.0</ac:Value>
      </ac:ContextItem>
      <ac:ContextItem Name="DeviceName">
        <ac:Value>MY_WINDOWS_DEVICE</ac:Value>
      </ac:ContextItem>
      <ac:ContextItem Name="MAC">
        <ac:Value>FF:FF:FF:FF:FF:FF</ac:Value>
      </ac:ContextItem>
      <ac:ContextItem Name="MAC">
        <ac:Value>CC:CC:CC:CC:CC:CC</ac:Value>
      </ac:ContextItem>
      <ac:ContextItem Name="IMEI">
        <ac:Value>49015420323756</ac:Value>
      </ac:ContextItem>
      <ac:ContextItem Name="IMEI">
        <ac:Value>30215420323756</ac:Value>
      </ac:ContextItem>
      <ac:ContextItem Name="EnrollmentType">
        <ac:Value>Full</ac:Value>
      </ac:ContextItem>
      <ac:ContextItem Name="DeviceType">
        <ac:Value>CIMClient Windows</ac:Value>
      </ac:ContextItem>
      <ac:ContextItem Name="ApplicationVersion">
        <ac:Value>10.0.9999.0</ac:Value>
      </ac:ContextItem>
      <ac:ContextItem Name="DeviceID">
        <ac:Value>7BA748C8-703E-4DF2-A74A-92984117346A</ac:Value>
      </ac:ContextItem>
      <ac:ContextItem Name="TargetedUserLoggedIn">
        <ac:Value>True</ac:Value>
      </ac:ContextItem>
    </ac:AdditionalContext>
  </wst:RequestSecurityToken>
</s:Body>

```

### 4.3.1.2 RequestSecurityToken Example: Request using Certificate Authentication

Note: All of the information in this section is subject to change because it applies to an unreleased, preliminary version of the Windows Server operating system, and thus may differ from the final version of the server software when released. All behavior notes that pertain to the unreleased, preliminary version of the Windows Server operating system contain specific references to Windows Server 2016 Technical Preview as an aid to the reader.

The following snippet demonstrates the call to the **RequestSecurityToken** message using `<AuthPolicy> "Certificate"`.

```
<s:Envelope xmlns:s="http://www.w3.org/2003/05/soap-envelope"
  xmlns:a="http://www.w3.org/2005/08/addressing"
  xmlns:u="http://docs.oasis-open.org/wss/2004/01/oasis-200401-wss-wssecurity-utility-
1.0.xsd"
  xmlns:wsse="http://docs.oasis-open.org/wss/2004/01/oasis-200401-wss-wssecurity-secext-
1.0.xsd"
  xmlns:wst="http://docs.oasis-open.org/ws-sx/ws-trust/200512"
  xmlns:ac="http://schemas.xmlsoap.org/ws/2006/12/authorization">
  <s:Header>
    <a:Action s:mustUnderstand="1">
      http://schemas.microsoft.com/windows/pki/2009/01/enrollment/RST/wstep
    </a:Action>
    <a:MessageID>urn:uuid:0d5a1441-5891-453b-becf-a2e5f6ea3749</a:MessageID>
    <a:ReplyTo>
      <a:Address>http://www.w3.org/2005/08/addressing/anonymous</a:Address>
    </a:ReplyTo>
    <a:To s:mustUnderstand="1">
      https://enrolltest.contoso.com:443/ENROLLMENTSERVER/DEVICEENROLLMENTWEBSERVICE.SVC
    </a:To>
    <wsse:Security s:mustUnderstand="1">
      <u:Timestamp>
        <u:Created>2014-10-16T17:55:13Z</wsu:Created>
        <!-- Start time in UTC -->
        <u:Expires>2014-10-16T17:57:13Z </wsu:Expires>
        <!-- Expiration time in UTC -->
      </u:Timestamp>
      <wsse:BinarySecurityToken ValueType=

"http://schemas.microsoft.com/5.0.0.0/ConfigurationManager/Enrollment/DeviceEnrollmentUserTok
en"
      EncodingType=
      "http://docs.oasis-open.org/wss/2004/01/oasis-200401-wss-wssecurity-secext-
1.0.xsd#base64binary"
      xmlns=
      http://docs.oasis-open.org/wss/2004/01/oasis-200401-wss-wssecurity-
secext-1.0.xsd
      u:Id="uuid-29801C2F-F26B-46AD-984B-AFAEFB545FF8">
      B64EncodedSampleBinarySecurityToken
      </wsse:BinarySecurityToken> <!--X509v3 Exported Public Cert, B64 Encoded, includes ID
reference value to reference -->
      <Signature xmlns="http://www.w3.org/2000/09/xmldsig#">
        <SignedInfo>
          <CanonicalizationMethod Algorithm="http://www.w3.org/2001/10/xml-exc-c14n#" />
          <SignatureMethod Algorithm="http://www.w3.org/2000/09/xmldsig#rsa-sha1/">
          <Reference URI="#envelop">
            <DigestMethod Algorithm="http://www.w3.org/2000/09/xmldsig#sha256"/>
            <DigestValue>MessageDigestValue</DigestValue>
            <!-- Digest value of message using digest method -->
          </Reference>
          </SignedInfo>
          <SignatureValue>
            SignedMessageBlob/SignatureValue
            <!-- Digest value of message signed with the user's private key using RSA-SHA256 --
>
          <KeyInfo>
```

```

        <wsse:SecurityTokenReference>
          <wsse:Reference URI="29801C2F-F26B-46AD-984B-AFAEFB545FF8"
            ValueType="http://docs.oasis-open.org/wss/2004/01/
              oasis-200401-wss-x509-token-profile-1.0#X509"/>
          <!-- References BinarySecurityToken that contains public key to verify
signature -->
        </wsse:SecurityTokenReference>
      </KeyInfo>
    </Signature>
  </wsse:Security>
</s:Header>
<s:Body>
  <wst:RequestSecurityToken>
    <wst:TokenType>
      http://schemas.microsoft.com/5.0.0.0/ConfigurationManager/Enrollment/DeviceEnrollmentToken
    </wst:TokenType>
    <wst:RequestType>
      http://docs.oasis-open.org/ws-sx/ws-trust/200512/Issue
    </wst:RequestType>
    <wsse:BinarySecurityToken
      ValueType="http://schemas.microsoft.com/windows/pki/2009/01/enrollment#PKCS10"
      EncodingType="http://docs.oasis-open.org/wss/2004/01/oasis-200401-wss-wssecurity-
secext-1.0.xsd#base64binary">
      DER format PKCS#10 certificate request in Base64 encoding Insterted Here
    </wsse:BinarySecurityToken>
    <ac:AdditionalContext xmlns="http://schemas.xmlsoap.org/ws/2006/12/authorization">
      <ac:ContextItem Name="OSEdition">
        <ac:Value> 4</ac:Value>
      <ac:ContextItem Name="OSVersion">
        <ac:Value>10.0.9999.0</ac:Value>
      </ac:ContextItem>
      <ac:ContextItem Name="DeviceName">
        <ac:Value>MY WINDOWS DEVICE</ac:Value>
      </ac:ContextItem>
      <ac:ContextItem Name="MAC">
        <ac:Value>FF:FF:FF:FF:FF:FF</ac:Value>
      </ac:ContextItem>
      <ac:ContextItem Name="MAC">
        <ac:Value>CC:CC:CC:CC:CC:CC</ac:Value>
      </ac:ContextItem>
      <ac:ContextItem Name="IMEI">
        <ac:Value>49015420323756</ac:Value>
      </ac:ContextItem>
      <ac:ContextItem Name="IMEI">
        <ac:Value>30215420323756</ac:Value>
      </ac:ContextItem>
      <ac:ContextItem Name="EnrollmentType">
        <ac:Value>Full</ac:Value>
      </ac:ContextItem>
      <ac:ContextItem Name="DeviceType">
        <ac:Value>CIMClient Windows</ac:Value>
      </ac:ContextItem>
      <ac:ContextItem Name="ApplicationVersion">
        <ac:Value>10.0.9999.0</ac:Value>
      </ac:ContextItem>
      <ac:ContextItem Name="DeviceID">
        <ac:Value>7BA748C8-703E-4DF2-A74A-92984117346A</ac:Value>
      </ac:ContextItem>
      </ac:ContextItem>
      <ac:ContextItem Name="TargetedUserLoggedIn">
        <ac:Value>True</ac:Value>
      </ac:ContextItem>
    </ac:AdditionalContext>
  </wst:RequestSecurityToken>
</s:Body>
</s:Envelope>

```



### 4.3.1.3 RequestSecurityToken Example: Request using On-Premise Authentication

Note: All of the information in this section is subject to change because it applies to an unreleased, preliminary version of the Windows Server operating system, and thus may differ from the final version of the server software when released. All behavior notes that pertain to the unreleased, preliminary version of the Windows Server operating system contain specific references to Windows Server 2016 Technical Preview as an aid to the reader.

The following snippet demonstrates the call to the **RequestSecurityToken** message using <AuthPolicy> "OnPremise".

```
<s:Envelope xmlns:s="http://www.w3.org/2003/05/soap-envelope"
  xmlns:a="http://www.w3.org/2005/08/addressing"
  xmlns:u="http://docs.oasis-open.org/wss/2004/01/oasis-200401-wss-wssecurity-utility-
1.0.xsd"
  xmlns:wsse="http://docs.oasis-open.org/wss/2004/01/oasis-200401-wss-wssecurity-secext-
1.0.xsd"
  xmlns:wst="http://docs.oasis-open.org/ws-sx/ws-trust/200512"
  xmlns:ac="http://schemas.xmlsoap.org/ws/2006/12/authorization">
  <s:Header>
    <a:Action s:mustUnderstand="1">
      http://schemas.microsoft.com/windows/pki/2009/01/enrollment/RST/wstep
    </a:Action>
    <a:MessageID>urn:uuid:0d5a1441-5891-453b-becf-a2e5f6ea3749</a:MessageID>
    <a:ReplyTo>
      <a:Address>http://www.w3.org/2005/08/addressing/anonymous</a:Address>
    </a:ReplyTo>
    <a:To s:mustUnderstand="1">
      https://enrolltest.contoso.com:443/ENROLLMENTSERVER/DEVICEENROLLMENTWEBSERVICE.SVC
    </a:To>
    <wsse:Security s:mustUnderstand="1">
      <wsse:UsernameToken u:Id="uuid-cclcccl1f-2fba-4bcf-b063-ffc0cac77917-4">
        <wsse:Username>user@contoso.com</wsse:Username>
        <wsse:Password wsse:Type=
          "http://docs.oasis-open.org/wss/2004/01/oasis-200401-wss-username-token-
profile-1.0#PasswordText">mypassword
        </wsse:Password>
      </wsse:UsernameToken>
    </wsse:Security>
  </s:Header>
  <s:Body>
    <wst:RequestSecurityToken>
      <wst:TokenType>
        http://schemas.microsoft.com/5.0.0.0/ConfigurationManager/Enrollment/DeviceEnrollmentToken
      </wst:TokenType>
      <wst:RequestType>
        http://docs.oasis-open.org/ws-sx/ws-trust/200512/Issue</wst:RequestType>
      <wsse:BinarySecurityToken
        ValueType="http://schemas.microsoft.com/windows/pki/2009/01/enrollment#PKCS10"
        EncodingType="http://docs.oasis-open.org/wss/2004/01/oasis-200401-wss-wssecurity-
secext-1.0.xsd#base64binary">
        DER format PKCS#10 certificate request in Base64 encoding Insterted Here
      </wsse:BinarySecurityToken>
      <ac:AdditionalContext xmlns="http://schemas.xmlsoap.org/ws/2006/12/authorization">
        <ac:ContextItem Name="OSEdition">
          <ac:Value> 4</ac:Value>
        </ac:ContextItem>
        <ac:ContextItem Name="OSVersion">
          <ac:Value>10.0.9999.0</ac:Value>
        </ac:ContextItem>
        <ac:ContextItem Name="DeviceName">
          <ac:Value>MY_WINDOWS_DEVICE</ac:Value>
        </ac:ContextItem>
        <ac:ContextItem Name="MAC">
          <ac:Value>FF:FF:FF:FF:FF:FF</ac:Value>
        </ac:ContextItem>
      </ac:AdditionalContext>
    </wst:RequestSecurityToken>
  </s:Body>
</s:Envelope>
```

```

    <ac:ContextItem Name="MAC">
      <ac:Value>CC:CC:CC:CC:CC:CC</ac:Value>
    </ac:ContextItem>
    <ac:ContextItem Name="IMEI">
      <ac:Value>49015420323756</ac:Value>
    </ac:ContextItem>
    <ac:ContextItem Name="IMEI">
      <ac:Value>30215420323756</ac:Value>
    </ac:ContextItem>
    <ac:ContextItem Name="EnrollmentType">
      <ac:Value>Full</ac:Value>
    </ac:ContextItem>
    <ac:ContextItem Name="DeviceType">
      <ac:Value>CIMClient_Windows</ac:Value>
    </ac:ContextItem>
    <ac:ContextItem Name="ApplicationVersion">
      <ac:Value>10.0.9999.0</ac:Value>
    </ac:ContextItem>
    <ac:ContextItem Name="DeviceID">
      <ac:Value>7BA748C8-703E-4DF2-A74A-92984117346A</ac:Value>
    </ac:ContextItem>

    <ac:ContextItem Name="TargetedUserLoggedIn">
      <ac:Value>True</ac:Value>
    </ac:ContextItem>
  </ac:AdditionalContext>
</wst:RequestSecurityToken>
</s:Body>
</s:Envelope>

```

### 4.3.2 RequestSecurityToken Example: Response

Note: Some of the information in this section is subject to change because it applies to an unreleased, preliminary version of the Windows Server operating system, and thus may differ from the final version of the server software when released. All behavior notes that pertain to the unreleased, preliminary version of the Windows Server operating system contain specific references to Windows Server 2016 Technical Preview in the Product Behavior appendix.

The following snippet demonstrates the call to the **RequestSecurityTokenResponseCollection** (section [3.4.4.1.1.2](#)) message.

```

<s:Envelope xmlns:s="http://schemas.xmlsoap.org/soap/envelope/"
  xmlns:a="http://www.w3.org/2005/08/addressing"
  xmlns:u="http://docs.oasis-open.org/wss/2004/01/oasis-200401-wss-wssecurity-utility-1.0.xsd">
  <s:Header>
    <a:Action s:mustUnderstand="1" >
      http://schemas.microsoft.com/windows/pki/2009/01/enrollment/RSTRC/wstep
    </a:Action>
    <a:RelatesTo>urn:uuid:81a5419a-496b-474f-a627-5cdd33eed8ab</a:RelatesTo>
    <o:Security s:mustUnderstand="1" xmlns:o=
      "http://docs.oasis-open.org/wss/2004/01/oasis-200401-wss-wssecurity-secext-1.0.xsd">
      <u:Timestamp u:Id="_0">
        <u:Created>2012-08-02T00:32:59.420Z</u:Created>
        <u:Expires>2012-08-02T00:37:59.420Z</u:Expires>
      </u:Timestamp>
    </o:Security>
  </s:Header>
  <s:Body>
    <RequestSecurityTokenResponseCollection
      xmlns="http://docs.oasis-open.org/ws-sx/ws-trust/200512">
      <RequestSecurityTokenResponse>
        <TokenType>
          http://schemas.microsoft.com/5.0.0.0/ConfigurationManager/Enrollment/DeviceEnrollmentToken

```

```
        </TokenType>
        <DispositionMessage
xmlns="http://schemas.microsoft.com/windows/pki/2009/01/enrollment"/>
<RequestedSecurityToken>
    <BinarySecurityToken
        ValueType=
"http://schemas.microsoft.com/5.0.0.0/ConfigurationManager/Enrollment/DeviceEnrollmentProvisi
onDoc"
            EncodingType=
"http://docs.oasis-open.org/wss/2004/01/oasis-200401-wss-wssecurity-secext-
1.0.xsd#base64binary"
                xmlns=
"http://docs.oasis-open.org/wss/2004/01/oasis-200401-wss-wssecurity-secext-
1.0.xsd">
                    B64EncodedSampleBinarySecurityToken
                </BinarySecurityToken>
            </RequestedSecurityToken>
            <RequestID xmlns="http://schemas.microsoft.com/windows/pki/2009/01/enrollment">0
            </RequestID>
        </RequestSecurityTokenResponse>
    </RequestSecurityTokenResponseCollection>
</s:Body>
</s:Envelope>
```

## **5 Security**

### **5.1 Security Considerations for Implementers**

MDE2 does not provide message-level signing or message-level encryption for any messages. Implementers should make use of transport protection as available in HTTPS to provide security to the client/server interaction.

MDE2 does not define a mechanism to limit a client's use of server resources, such as CPU, network bandwidth, and memory.

### **5.2 Index of Security Parameters**

None.

## 6 Appendix A: Full WSDL

### XSD for Discovery Messages

```
<?xml version="1.0" encoding="utf-8"?>
<xsd:schema
  xmlns:xsd="http://www.w3.org/2001/XMLSchema"
  xmlns:enroll="http://schemas.microsoft.com/windows/management/2012/01/enrollment"
  targetNamespace="http://schemas.microsoft.com/windows/management/2012/01/enrollment"
  elementFormDefault="qualified">
  <xsd:element name="DiscoverResponse">
    <xsd:complexType>
      <xsd:all>
        <xsd:element name="DiscoverResult">
          <xsd:complexType>
            <xsd:all>
              <xsd:element minOccurs="1" maxOccurs="1" name="AuthPolicy"
type="enroll:AuthPolicyType"/>
              <xsd:element minOccurs="0" maxOccurs="1"
name="EnrollmentPolicyServiceUrl" nillable="true" type="xsd:anyURI"/>
              <xsd:element minOccurs="1" maxOccurs="1"
name="EnrollmentServiceUrl" type="xsd:anyURI"/>
              <xsd:element minOccurs="0" maxOccurs="1"
name="AuthenticationServiceUrl" nillable="true" type="xsd:anyURI"/>
              <xsd:element minOccurs="0" maxOccurs="1" name="EnrollmentVersion"
nillable="true" type="xsd:decimal"/>
            </xsd:all>
          </xsd:complexType>
        </xsd:element>
      </xsd:all>
    </xsd:complexType>
  </xsd:element>
  <xsd:element name="Discover">
    <xsd:complexType>
      <xsd:all>
        <xsd:element name="request">
          <xsd:complexType>
            <xsd:all>
              <xsd:element minOccurs="1" maxOccurs="1" name="EmailAddress"
type="enroll:EmailAddressType"/>
              <xsd:element minOccurs="1" maxOccurs="1" name="RequestVersion"
type="xsd:decimal"/>
              <xsd:element minOccurs="1" maxOccurs="1" name="DeviceType"
type="enroll:DeviceType"/>
              <xsd:element minOccurs="1" maxOccurs="1"
name="ApplicationVersion" type="enroll:DottedQuadType"/>
              <xsd:element minOccurs="1" maxOccurs="1" name="OSEdition"
type="xsd:unsignedInt"/>
              <xsd:element name="AuthPolicies">
                <xsd:complexType>
                  <xsd:sequence>
                    <xsd:element minOccurs="1" maxOccurs="3"
name="AuthPolicy" type="enroll:AuthPolicyType"/>
                  </xsd:sequence>
                </xsd:complexType>
              </xsd:element>
            </xsd:all>
          </xsd:complexType>
        </xsd:element>
      </xsd:all>
    </xsd:complexType>
  </xsd:element>
  <xsd:simpleType name="AuthPolicyType">
    <xsd:restriction base="xsd:string">
      <xsd:enumeration value="Certificate"/>
      <xsd:enumeration value="Federated"/>
      <xsd:enumeration value="OnPremise"/>
    </xsd:restriction>
  </xsd:simpleType>
</xsd:schema>
```

```
    </xsd:restriction>
  </xsd:simpleType>
  <xsd:simpleType name="DottedQuadType">
    <xsd:restriction base="xsd:string">
      <xsd:pattern value="([0-9]*\.){3}[0-9]*" />
    </xsd:restriction>
  </xsd:simpleType>
  <xsd:simpleType name="DeviceType">
    <xsd:restriction base="xsd:string">
      <xsd:enumeration value="CIMClient_Windows"/>
      <xsd:enumeration value="WindowsPhone"/>
    </xsd:restriction>
  </xsd:simpleType>
  <xsd:simpleType name="EmailAddressType">
    <xsd:restriction base="xsd:string">
      <xsd:pattern value="^[^@]+@[^\.]+\.\.+"/>
    </xsd:restriction>
  </xsd:simpleType>
</xsd:schema>
```

**XSD for Certificate Policy Messages** - See X.509 Certificate Enrollment Policy Protocol [MS-XCEP]

**XSD for Enrollment Messages:**

- See WS-Trust X.509v3 Token Enrollment Extensions [MS-WSTEP]
- And WS-Trust 1.3 [WSTrust1.3]

## 7 Appendix B: Product Behavior

The information in this specification is applicable to the following Microsoft products or supplemental software. References to product versions include released service packs.

- Windows 10 operating system

Exceptions, if any, are noted below. If a service pack or Quick Fix Engineering (QFE) number appears with the product version, behavior changed in that service pack or QFE. The new behavior also applies to subsequent service packs of the product unless otherwise specified. If a product edition appears with the product version, behavior is different in that product edition.

Unless otherwise specified, any statement of optional behavior in this specification that is prescribed using the terms SHOULD or SHOULD NOT implies product behavior in accordance with the SHOULD or SHOULD NOT prescription. Unless otherwise specified, the term MAY implies that the product does not follow the prescription.

[<1> Section 1.3](#): Windows Server 2016 Technical Preview operating system also supports this protocol.

[<2> Section 2.2.9.2](#): When installing a certificate into Microsoft .NET Passport, the only supported value is 2048.

[<3> Section 2.2.9.2](#): ROBO is the only supported renewal method for Windows 10. This value is ignored and always considered to be true. Supported operations are Add, Get, Delete, and Replace.

## 8 Change Tracking

No table of changes is available. The document is either new or has had no changes since its last release.



## 9 Index

### A

Abstract data model  
[server](#) 43  
[Applicability](#) 13  
[Attribute groups](#) 15  
[Attributes](#) 15

### C

[Capability negotiation](#) 13  
[Change tracking](#) 88  
[Complex types](#) 15

### D

Data model - abstract  
[server](#) 43

### E

Events  
[local - server](#) 48  
[timer - server](#) 48

### F

[Fields - vendor-extensible](#) 13  
[Full WSDL](#) 85

### G

[Glossary](#) 6  
[Groups](#) 15

### I

[Implementer - security considerations](#) 84  
[Index of security parameters](#) 84  
[Informative references](#) 10  
Initialization  
[server](#) 43  
[Introduction](#) 6

### L

Local events

[server](#) 48

### M

Message processing  
[server](#) 43  
Messages  
[attribute groups](#) 15  
[attributes](#) 15  
[complex types](#) 15  
[elements](#) 15  
[enumerated](#) 14  
[groups](#) 15  
[namespaces](#) 14  
[simple types](#) 15  
[syntax](#) 14  
[transport](#) 14

### N

[Namespaces](#) 14  
[Normative references](#) 9

### O

Operations  
[Discover](#) 43  
[Overview \(synopsis\)](#) 10

### P

[Parameters - security index](#) 84  
[Preconditions](#) 13  
[Prerequisites](#) 13  
[Product behavior](#) 87

### R

[References](#) 9  
[informative](#) 10  
[normative](#) 9  
[Relationship to other protocols](#) 12

### S

Security  
[implementer considerations](#) 84  
[parameter index](#) 84  
Sequencing rules  
[server](#) 43  
Server

- [abstract data model](#) 43
- [Discover operation](#) 43
- [initialization](#) 43
- [local events](#) 48
- [message processing](#) 43
- [sequencing rules](#) 43
- [timer events](#) 48
- [timers](#) 43
- [Simple types](#) 15
- [Standards assignments](#) 13
- Syntax
  - [messages - overview](#) 14

## T

- Timer events
  - [server](#) 48
- Timers
  - [server](#) 43
- [Tracking changes](#) 88
- [Transport](#) 14
- Types
  - [complex](#) 15
  - [simple](#) 15

## V

- [Vendor-extensible fields](#) 13
- [Versioning](#) 13

## W

- [WSDL](#) 85