

## [MS-DFSC-Diff]:

# Distributed File System (DFS): Referral Protocol

---

### Intellectual Property Rights Notice for Open Specifications Documentation

- **Technical Documentation.** Microsoft publishes Open Specifications documentation (“this documentation”) for protocols, file formats, data portability, computer languages, and standards support. Additionally, overview documents cover inter-protocol relationships and interactions.
- **Copyrights.** This documentation is covered by Microsoft copyrights. Regardless of any other terms that are contained in the terms of use for the Microsoft website that hosts this documentation, you can make copies of it in order to develop implementations of the technologies that are described in this documentation and can distribute portions of it in your implementations that use these technologies or in your documentation as necessary to properly document the implementation. You can also distribute in your implementation, with or without modification, any schemas, IDLs, or code samples that are included in the documentation. This permission also applies to any documents that are referenced in the Open Specifications documentation.
- **No Trade Secrets.** Microsoft does not claim any trade secret rights in this documentation.
- **Patents.** Microsoft has patents that might cover your implementations of the technologies described in the Open Specifications documentation. Neither this notice nor Microsoft's delivery of this documentation grants any licenses under those patents or any other Microsoft patents. However, a given Open Specifications document might be covered by the Microsoft [Open Specifications Promise](#) or the [Microsoft Community Promise](#). If you would prefer a written license, or if the technologies described in this documentation are not covered by the Open Specifications Promise or Community Promise, as applicable, patent licenses are available by contacting [iplg@microsoft.com](mailto:iplg@microsoft.com).
- **License Programs.** To see all of the protocols in scope under a specific license program and the associated patents, visit the [Patent Map](#).
- **Trademarks.** The names of companies and products contained in this documentation might be covered by trademarks or similar intellectual property rights. This notice does not grant any licenses under those rights. For a list of Microsoft trademarks, visit [www.microsoft.com/trademarks](http://www.microsoft.com/trademarks).
- **Fictitious Names.** The example companies, organizations, products, domain names, email addresses, logos, people, places, and events that are depicted in this documentation are fictitious. No association with any real company, organization, product, domain name, email address, logo, person, place, or event is intended or should be inferred.

**Reservation of Rights.** All other rights are reserved, and this notice does not grant any rights other than as specifically described above, whether by implication, estoppel, or otherwise.

**Tools.** The Open Specifications documentation does not require the use of Microsoft programming tools or programming environments in order for you to develop an implementation. If you have access to Microsoft programming tools and environments, you are free to take advantage of them. Certain Open Specifications documents are intended for use in conjunction with publicly available standards specifications and network programming art and, as such, assume that the reader either is familiar with the aforementioned material or has immediate access to it.

**Support.** For questions and support, please contact [dochelp@microsoft.com](mailto:dochelp@microsoft.com).

## Revision Summary

Date	Revision History	Revision Class	Comments
3/2/2007	0.01	New	Version 0.01 release
6/1/2007	1.0	Major	Updated and revised the technical content.
7/3/2007	1.0.1	Editorial	Changed language and formatting in the technical content.
7/20/2007	2.0	Major	Updated and revised the technical content.
8/10/2007	3.0	Major	Updated and revised the technical content.
9/28/2007	3.0.1	Editorial	Changed language and formatting in the technical content.
10/23/2007	3.1	Minor	Clarified the meaning of the technical content.
11/30/2007	3.1.1	Editorial	Changed language and formatting in the technical content.
1/25/2008	3.1.2	Editorial	Changed language and formatting in the technical content.
3/14/2008	3.1.3	Editorial	Changed language and formatting in the technical content.
5/16/2008	3.1.4	Editorial	Changed language and formatting in the technical content.
6/20/2008	3.1.5	Editorial	Changed language and formatting in the technical content.
7/25/2008	4.0	Major	Updated and revised the technical content.
8/29/2008	5.0	Major	Updated and revised the technical content.
10/24/2008	5.0.1	Editorial	Changed language and formatting in the technical content.
12/5/2008	6.0	Major	Updated and revised the technical content.
1/16/2009	7.0	Major	Updated and revised the technical content.
2/27/2009	8.0	Major	Updated and revised the technical content.
4/10/2009	8.0.1	Editorial	Changed language and formatting in the technical content.
5/22/2009	9.0	Major	Updated and revised the technical content.
7/2/2009	9.0.1	Editorial	Changed language and formatting in the technical content.
8/14/2009	9.0.2	Editorial	Changed language and formatting in the technical content.
9/25/2009	9.1	Minor	Clarified the meaning of the technical content.
11/6/2009	9.1.1	Editorial	Changed language and formatting in the technical content.
12/18/2009	10.0	Major	Updated and revised the technical content.
1/29/2010	11.0	Major	Updated and revised the technical content.
3/12/2010	12.0	Major	Updated and revised the technical content.
4/23/2010	12.0.1	Editorial	Changed language and formatting in the technical content.
6/4/2010	13.0	Major	Updated and revised the technical content.
7/16/2010	13.1	Minor	Clarified the meaning of the technical content.

<b>Date</b>	<b>Revision History</b>	<b>Revision Class</b>	<b>Comments</b>
8/27/2010	13.2	Minor	Clarified the meaning of the technical content.
10/8/2010	13.2	None	No changes to the meaning, language, or formatting of the technical content.
11/19/2010	14.0	Major	Updated and revised the technical content.
1/7/2011	15.0	Major	Updated and revised the technical content.
2/11/2011	16.0	Major	Updated and revised the technical content.
3/25/2011	17.0	Major	Updated and revised the technical content.
5/6/2011	17.0	None	No changes to the meaning, language, or formatting of the technical content.
6/17/2011	17.1	Minor	Clarified the meaning of the technical content.
9/23/2011	17.1	None	No changes to the meaning, language, or formatting of the technical content.
12/16/2011	18.0	Major	Updated and revised the technical content.
3/30/2012	18.0	None	No changes to the meaning, language, or formatting of the technical content.
7/12/2012	19.0	Major	Updated and revised the technical content.
10/25/2012	20.0	Major	Updated and revised the technical content.
1/31/2013	21.0	Major	Updated and revised the technical content.
8/8/2013	22.0	Major	Updated and revised the technical content.
11/14/2013	23.0	Major	Updated and revised the technical content.
2/13/2014	24.0	Major	Updated and revised the technical content.
5/15/2014	24.0	None	No changes to the meaning, language, or formatting of the technical content.
6/30/2015	25.0	Major	Significantly changed the technical content.
10/16/2015	25.0	None	No changes to the meaning, language, or formatting of the technical content.
7/14/2016	25.0	None	No changes to the meaning, language, or formatting of the technical content.
6/1/2017	26.0	Major	Significantly changed the technical content.
9/15/2017	27.0	Major	Significantly changed the technical content.
12/1/2017	27.0	None	No changes to the meaning, language, or formatting of the technical content.
9/12/2018	28.0	Major	Significantly changed the technical content.
4/7/2021	29.0	Major	Significantly changed the technical content.
6/25/2021	30.0	Major	Significantly changed the technical content.

Date	Revision History	Revision Class	Comments
4/23/2024	31.0	Major	Significantly changed the technical content.

# Table of Contents

<b>1</b>	<b>Introduction</b>	<b>7</b>
1.1	(Updated Section) Glossary	7
1.2	References	10
1.2.1	(Updated Section) Normative References	10
1.2.2	(Updated Section) Informative References	11
1.3	Overview	11
1.4	Relationship to Other Protocols	12
1.5	Prerequisites/Preconditions	13
1.5.1	Common Requirements	13
1.5.2	Client	13
1.5.3	DC or DFS Root Target Server	13
1.6	Applicability Statement	13
1.7	Versioning and Capability Negotiation	14
1.8	Vendor-Extensible Fields	14
1.9	Standards Assignments	14
<b>2</b>	<b>Messages</b>	<b>15</b>
2.1	Transport	15
2.2	Message Syntax	15
2.2.1	Common Conventions	15
2.2.1.1	Host Name	16
2.2.1.2	Share Name	16
2.2.1.3	UNC Path	16
2.2.1.4	DFS Root	16
2.2.1.5	DFS Link	16
2.2.1.6	DFS Root Target	17
2.2.1.7	DFS Target	17
2.2.2	REQ_GET_DFS_REFERRAL	17
2.2.3	REQ_GET_DFS_REFERRAL_EX	17
2.2.3.1	RequestData	18
2.2.4	RESP_GET_DFS_REFERRAL	19
2.2.5	Referral Entry Types	20
2.2.5.1	DFS_REFERRAL_V1	20
2.2.5.2	DFS_REFERRAL_V2	21
2.2.5.3	DFS_REFERRAL_V3	22
2.2.5.3.1	NameListReferral Flag Set to 0	22
2.2.5.3.2	NameListReferral Flag Set to 1	23
2.2.5.4	DFS_REFERRAL_V4	23
<b>3</b>	<b>Protocol Details</b>	<b>25</b>
3.1	DFS Client Details	25
3.1.1	Abstract Data Model	25
3.1.2	Timers	26
3.1.3	Initialization	26
3.1.4	Higher-Layer Triggered Events	26
3.1.4.1	User/Application Initiated I/O Operation on a UNC Path	26
3.1.4.2	Sending a DFS Referral Request to the Server	40
3.1.5	Message Processing Events and Sequencing Rules	41
3.1.5.1	I/O Operation to Target Fails with STATUS_PATH_NOT_COVERED	41
3.1.5.2	I/O Operation to Target Fails with an Error Other Than STATUS_PATH_NOT_COVERED	42
3.1.5.3	I/O Operation to a DFS Root Target or DFS Link Target Succeeds	42
3.1.5.4	Receiving a Referral Response	42
3.1.5.4.1	Receiving a Domain Referral Response	42
3.1.5.4.2	Receiving a DC Referral Response	43
3.1.5.4.3	Receiving a Root Referral Response or Link Referral Response	43
3.1.5.4.4	Receiving a sysvol Referral Response	44

3.1.5.4.5	Determining Whether a Referral Response is an Interlink .....	45
3.1.6	Timer Events.....	45
3.1.7	Other Local Events.....	45
3.2	DFS Root Target Server Details.....	45
3.2.1	Abstract Data Model.....	45
3.2.1.1	Algorithm for sorting target sites in referral response based on site location .	45
3.2.1.2	Algorithm for sorting target sites in referral response based on site cost .....	46
3.2.2	Timers .....	46
3.2.3	Initialization.....	46
3.2.4	Higher-Layer Triggered Events .....	46
3.2.4.1	Handling a Path Normalization Request.....	46
3.2.4.2	Handling a DFS Referral Request.....	46
3.2.5	Message Processing Events and Sequencing Rules .....	47
3.2.5.1	Receiving a DFS Referral Request .....	47
3.2.5.2	Receiving a Domain Referral Request .....	47
3.2.5.3	Receiving a DC Referral Request .....	47
3.2.5.4	Receiving a sysvol Referral Request .....	47
3.2.5.5	<b>(Updated Section)</b> Receiving a Root Referral Request or Link Referral Request	48
3.2.6	Timer Events.....	51
3.2.7	Other Local Events.....	51
3.3	Domain Controller Details .....	51
3.3.1	Abstract Data Model.....	52
3.3.2	Timers .....	52
3.3.3	Initialization .....	52
3.3.4	Higher-Layer Triggered Events .....	52
3.3.5	Message Processing Events and Sequencing Rules .....	52
3.3.5.1	Receiving a DFS Referral Request .....	52
3.3.5.2	Receiving a Domain Referral Request .....	52
3.3.5.3	Receiving a DC Referral Request.....	53
3.3.5.4	Receiving a sysvol Referral Request .....	55
3.3.5.5	Receiving a Root Referral Request or Link Referral Request .....	56
3.3.6	Timer Events.....	57
3.3.7	Other Local Events.....	57
<b>4</b>	<b>Protocol Examples .....</b>	<b>58</b>
4.1	Domain Referral.....	58
4.2	DC Referral .....	59
4.3	Domain-Based DFS Root Referral .....	60
4.4	Domain-Based DFS Link Referral.....	61
4.5	Domain-Based DFS Root Referral Packet Trace .....	62
4.6	Standalone DFS Root Referral.....	65
<b>5</b>	<b>Security.....</b>	<b>66</b>
5.1	Security Considerations for Implementers .....	66
5.2	Index of Security Parameters .....	66
<b>6</b>	<b><b>(Updated Section)</b> Appendix A: Product Behavior.....</b>	<b>67</b>
<b>7</b>	<b>Change Tracking.....</b>	<b>75</b>
<b>8</b>	<b>Index.....</b>	<b>76</b>

# 1 Introduction

The Distributed File System (DFS): Namespace Referral Protocol allows file system clients to resolve names from a namespace distributed across many servers and geographies into local names on specific file servers. After names have been resolved, clients can directly access files on the identified servers by using file system protocols such as the Server Message Block (SMB) Version 1.0 Protocol (as specified in [MS-SMB]), Network File System (NFS) (for more information, see [RFC3530]), and NetWare Core Protocol (NCP) (for more information, see [NOVELL]).

Sections 1.5, 1.8, 1.9, 2, and 3 of this specification are normative. All other sections and examples in this specification are informative.

## 1.1 (Updated Section) Glossary

This document uses the following terms:

**8.3 name:** A file name string restricted in length to 12 characters that includes a base name of up to eight characters, one character for a period, and up to three characters for a file name extension. For more information on 8.3 file names, see [MS-CIFS] section 2.2.1.1.1.

**DFS namespace name:** The second path component of a DFS path. In the DFS path \\MyDomain\MyDfs\MyDir, the DFS namespace name is MyDfs.

**DFS server:** A server computer that runs the DFS service required to respond to DFS referral requests. Also interchangeably used to refer to the DFS service itself.

**DFS target:** Either a DFS root target server or a DFS link target server.

**Distributed File System (DFS):** A file system that logically groups physical shared folders located on different servers by transparently connecting them to one or more hierarchical namespaces. DFS also provides fault-tolerance and load-sharing capabilities.

**Distributed File System (DFS) client:** A computer that is used to access a DFS namespace. It also can refer to the DFS software on a client that accesses the DFS namespace.

**Distributed File System (DFS) client target failback:** An optional feature that, when enabled, permits a DFS client to revert to a more optimal DFS target at an appropriate time after a DFS client target failover. The term "failback" refers to DFS client target failback. The DFS Referral Protocol, as specified in [MS-DFSC], describes the mechanisms by which a DFS server provides a list of DFS targets in decreasing order of optimality to the client.

**Distributed File System (DFS) client target failover:** When a DFS referral response has multiple targets, a DFS client attempts to find the first target that is both available and accessible. If the first DFS target in the list is not available or accessible, the DFS client determines whether the next target in the list is available and accessible. The client repeats this process until an available and accessible target is found or no more targets are left in the list of targets. DFS clients support DFS client target failover only for operations involving pathnames. The term "failover" refers to DFS client target failover. The DFS Referral Protocol, as specified in [MS-DFSC], describes the mechanisms by which a DFS server provides a list of DFS targets in decreasing order of optimality to the client.

**Distributed File System (DFS) in-site referral mode:** A mode in which DFS root or DFS link referral requests to a DFS server result in DFS referral responses with only those DFS targets in the same Active Directory Domain Services (AD DS) site as the DFS client requesting the DFS referral. When this mode is disabled, there is no restriction on the AD DS site of the targets returned in the referral response. This can be enabled per DFS namespace. If there are no DFS targets in the same AD DS site as the client, the DFS referral response may be empty.

**Distributed File System (DFS) interlink:** A special form of DFS link whose link target is a DFS domain-based namespace.

**Distributed File System (DFS) link:** A component in a DFS path that lies below the DFS root and maps to one or more DFS link targets. Also interchangeably used to refer to a DFS path that contains the DFS link.

**Distributed File System (DFS) link target:** The mapping destination of a link. A link target can be any Universal Naming Convention (UNC) path. For example, a link target could be a share or another Distributed File System (DFS) path.

**Distributed File System (DFS) metadata:** Information about a Distributed File System (DFS) namespace such as namespace name, DFS links, DFS link targets, and so on, that is maintained by a DFS server. For domain-based DFS, the metadata is stored in an Active Directory Domain Services (AD DS) object corresponding to the DFS namespace. For a stand-alone DFS namespace, the DFS root target stores the DFS metadata in an implementation-defined manner; for example, in the registry.

**Distributed File System (DFS) namespace:** A virtual view of shares on different servers as provided by DFS. Each file in the namespace has a logical name and a corresponding address (path). A DFS namespace consists of a root and many links and targets. The namespace starts with a root that maps to one or more root targets. Below the root are links that map to their own targets.

**Distributed File System (DFS) namespace, domain-based:** A DFS namespace that has configuration information stored in the Active Directory directory service. The DFS namespace may span over a distributed system that is organized hierarchically into logical domains, each with a domain controller (DC). The path to access the root or a link starts with the host domain name. A domain-based DFS root can have multiple root targets, which offers fault tolerance and load sharing at the root level.

**Distributed File System (DFS) namespace, standalone:** A DFS namespace that has metadata stored locally on the host server. The path to access the root or a link starts with the host server name. A stand-alone DFS root has only one root target. Stand-alone roots are not fault-tolerant; when the root target is unavailable, the entire DFS namespace is inaccessible. Stand-alone DFS roots can be made fault tolerant by creating them on clustered file servers.

**Distributed File System (DFS) path:** Any Universal Naming Convention (UNC) path that starts with a DFS root and is used for accessing a file or directory in a DFS namespace.

**Distributed File System (DFS) referral:** A DFS client issues a DFS referral request to a DFS root target or a DC, depending on the DFS path accessed, to resolve a DFS root to a set of DFS root targets, or a DFS link to a set of DFS link targets. The DFS client uses the referral request process as needed to finally identify the actual share on a server that has accessed the leaf component of the DFS path. The request for a DFS referral is referred to as DFS referral request, and the response for such a request is referred to as DFS referral response.

**Distributed File System (DFS) referral site costing:** When appropriately enabled for a DFS namespace, an optional feature that results in a DFS referral response. In the referral response, targets are grouped into sets based on increasing Active Directory Domain Services (AD DS) site cost from the DFS client that is requesting the referral to the DFS target server. When this feature is disabled, the referral response consists of at most two target sets: one set consisting of all DFS targets in the same AD DS site as the DFS client, and the other set consisting of DFS targets that are not in the same AD DS site as the DFS client.

**Distributed File System (DFS) root:** The starting point of the DFS namespace. The root is often used to refer to the namespace as a whole. A DFS root maps to one or more root targets, each of which corresponds to a share on a separate server. A DFS root has one of the following formats "\\<ServerName>\<RootName>" or "\\<DomainName>\<RootName>". Where <ServerName> is the name of the root target server hosting the DFS namespace;



<DomainName> is the name of the domain that hosts the DFS root; and <RootName> is the name of the root of a domain-based DFS. The DFS root must reside on an NTFS volume.

**Distributed File System (DFS) root target:** A server that hosts a DFS root of a DFS namespace. A domain-based DFS namespace can have multiple DFS root targets; a standalone DFS namespace can have only one DFS root target.

**domain:** A set of users and computers sharing a common namespace and management infrastructure. At least one computer member of the set **must have to** act as a domain controller (DC) and host a member list that identifies all members of the domain, as well as optionally hosting the Active Directory service. The domain controller provides authentication of members, creating a unit of trust for its members. Each domain has an identifier that is shared among its members. For more information, see [MS-AUTHSOD] section 1.1.1.5 and [MS-ADTS].

**domain controller (DC):** The service, running on a server, that implements Active Directory, or the server hosting this service. The service hosts the data store for objects and interoperates with other DCs to ensure that a local change to an object replicates correctly across all DCs. When Active Directory is operating as Active Directory Domain Services (AD DS), the DC contains full NC replicas of the configuration naming context (config NC), schema naming context (schema NC), and one of the domain NCs in its forest. If the AD DS DC is a global catalog server (GC server), it contains partial NC replicas of the remaining domain NCs in its forest. For more information, see [MS-AUTHSOD] section 1.1.1.5.2 and [MS-ADTS]. When Active Directory is operating as Active Directory Lightweight Directory Services (AD LDS), several AD LDS DCs can run on one server. When Active Directory is operating as AD DS, only one AD DS DC can run on one server. However, several AD LDS DCs can coexist with one AD DS DC on one server. The AD LDS DC contains full NC replicas of the config NC and the schema NC in its forest. The domain controller is the server side of Authentication Protocol Domain Support [MS-APDS].

**domain name:** A name with a structure indicated by dots.

**domain-based DFS namespace:** A DFS namespace that has configuration information stored in domain services. The DFS namespace can span a distributed system that is organized hierarchically into logical domains. The path to access a domain-based DFS namespace starts with the host domain name. A domain-based DFS namespace can have multiple DFS root targets, which offers high availability and load sharing at the DFS root level.

**forest:** One or more domains that share a common schema and trust each other transitively. An organization can have multiple forests. A forest establishes the security and administrative boundary for all the objects that reside within the domains that belong to the forest. In contrast, a domain establishes the administrative boundary for managing objects, such as users, groups, and computers. In addition, each domain has individual security policies and trust relationships with other domains.

**host name:** The name of a host on a network that is used for identification and access purposes by humans and other computers on the network.

**Server Message Block (SMB):** A protocol that is used to request file and print services from server systems over a network. The SMB protocol extends the CIFS protocol with additional security, file, and disk management support. For more information, see [CIFS] and [MS-SMB].

**share:** A resource offered by a Common Internet File System (CIFS) server for access by CIFS clients over the network. A share typically represents a directory tree and its included files (referred to commonly as a "disk share" or "file share") or a printer (a "print share"). If the information about the share is saved in persistent store (for example, Windows registry) and reloaded when a file server is restarted, then the share is referred to as a "sticky share". Some share names are reserved for specific functions and are referred to as special shares: IPC\$, reserved for interprocess communication, ADMIN\$, reserved for remote administration, and A\$, B\$, C\$ (and other local disk names followed by a dollar sign), assigned to local disk devices.

**share name:** The name of a share.

**site:** A collection of one or more well-connected (reliable and fast) TCP/IP subnets. By defining sites (represented by site objects) an administrator can optimize both Active Directory access and Active Directory replication with respect to the physical network. When users log in, Active Directory clients find domain controllers (DCs) that are in the same site as the user, or near the same site if there is no DC in the site. See also Knowledge Consistency Checker (KCC). For more information, see [MS-ADTS].

**site cost:** An administrator-defined numerical value meant to indicate the bandwidth or actual monetary cost of transmitting data between two sites. Only a comparison between two site cost values is meaningful, with a lower site preferred to a higher site cost.

**stand-alone DFS namespace:** A DFS namespace that has DFS metadata stored locally on the host server. The path to access the DFS root or a DFS link starts with the DFS root target host name. A stand-alone DFS namespace has only one DFS root target. Stand-alone DFS roots are not fault-tolerant; when the DFS root target is unavailable, the entire DFS namespace is inaccessible. Stand-alone DFS roots can be made fault-tolerant by being created on clustered file servers.

**target set:** A consecutive list of referral entries. A DFS referral response consists of DFS targets that are grouped into sets based on various policies. One policy groups DFS targets into two sets: one consisting of all DFS targets in the same site as the DFS client, and the other consisting of all remaining DFS targets. Another policy creates DFS target sets, where each set contains DFS targets that have the same site cost from the DFS client's perspective, in increasing order of cost. By assigning non-default priorities to DFS targets, other policies are possible. For more information, see [MSDFS].

**Unicode:** A character encoding standard developed by the Unicode Consortium that represents almost all of the written languages of the world. The Unicode standard [UNICODE5.0.0/2007] provides three forms (UTF-8, UTF-16, and UTF-32) and seven schemes (UTF-8, UTF-16, UTF-16 BE, UTF-16 LE, UTF-32, UTF-32 LE, and UTF-32 BE).

**Universal Naming Convention (UNC):** A string format that specifies the location of a resource. For more information, see [MS-DTYP] section 2.2.57.

**MAY, SHOULD, MUST, SHOULD NOT, MUST NOT:** These terms (in all caps) are used as defined in [RFC2119]. All statements of optional behavior use either MAY, SHOULD, or SHOULD NOT.

## 1.2 References

Links to a document in the Microsoft Open Specifications library point to the correct section in the most recently published version of the referenced document. However, because individual documents in the library are not updated at the same time, the section numbers in the documents may not match. You can confirm the correct section numbering by checking the Errata.

### 1.2.1 (Updated Section) Normative References

We conduct frequent surveys of the normative references to assure their continued availability. If you have any issue with finding a normative reference, please contact dochelp@microsoft.com. We will assist you in finding the relevant information.

[MS-CIFS] Microsoft Corporation, "Common Internet File System (CIFS) Protocol".

[MS-DFSNM] Microsoft Corporation, "Distributed File System (DFS): Namespace Management Protocol".

[MS-DRSR] Microsoft Corporation, "Directory Replication Service (DRS) Remote Protocol".

[MS-ERREF] Microsoft Corporation, "Windows Error Codes".

[MS-NRPC] Microsoft Corporation, "Netlogon Remote Protocol".

[MS-SMB2] Microsoft Corporation, "Server Message Block (SMB) Protocol Versions 2 and 3".

[MS-SMB] Microsoft Corporation, "Server Message Block (SMB) Protocol".

[MS-SRVS] Microsoft Corporation, "Server Service Remote Protocol".

[RFC2119] Bradner, S., "Key words for use in RFCs to Indicate Requirement Levels", BCP 14, RFC 2119, March 1997, <http://www.rfc-editor.org/rfc/info/rfc2119.txt>

[UNICODE] The Unicode Consortium, "The Unicode Consortium Home Page", <http://www.unicode.org/>

### 1.2.2 (Updated Section) Informative References

[KB831201] Microsoft Corporation, "An update for Windows Server 2003 and Windows 2000 Server makes it possible to put the logon server at the top of the DFS referrals list", [Version 9.0, April 2010, http://support.microsoft.com/kb/831201](http://support.microsoft.com/kb/831201), <https://mskb.pkisolutions.com/kb/831201>

[MSDFS] Microsoft Corporation, "How DFS Works", March 2003, <http://technet.microsoft.com/en-us/library/cc782417%28WS.10%29.aspx>

[NOVELL] Chappell, L.A. and Hakes, D.E., "Novell's Guide to NetWare LAN Analysis, 2nd Edition", Novell Press, June 1994, ISBN: 0782113621.

[RFC3530] Shepler, S., et al., "Network File System (NFS) version 4 Protocol", RFC 3530, April 2003, <http://www.ietf.org/rfc/rfc3530.txt>

## 1.3 Overview

The Distributed File System (DFS) enables file system clients to access remote file shares by using a DFS path (or virtual name) for the share, which is then transparently resolved to an actual share name on an actual file server. There is quite a bit of flexibility in this mapping. For example, DFS can enable the grouping of a set of shares located on different file servers into a unified namespace. DFS name resolution can also be used to transparently recover from a file server failure and to resolve a share to a geographically optimal file server for the specific client that is requesting access. Without DFS, users of a network file system, such as Server Message Block (SMB), are required to know the names of all file servers, and shares that reside on those file servers, for which they require access. With DFS, users can navigate a unified namespace to access files and folders without knowledge of the names of individual file servers and shares that host the data. For more information about DFS, including DFS terminology, usage models, and the Microsoft DFS implementation, see [MSDFS].

After the DFS path has been resolved to an actual path, clients can directly access files on the identified servers by using standard remote file system protocols, such as the Server Message Block (SMB) Protocol (as specified in [MS-SMB]), Server Message Block (SMB) Version 2 Protocol (as specified in [MS-SMB2]), Network File System (NFS) (as specified in [RFC3530]), and NCP, as specified in [NOVELL].

The DFS: Referral Protocol supports two types of namespaces: domain-based namespaces, which offer high availability and load balancing, and stand-alone namespaces, which reside on a single DFS root target server and do not require domain infrastructure. In stand-alone DFS namespaces, clients issue root referral requests and link referral requests directly to the DFS root target server.

For domain-based namespaces, clients issue DFS referral requests to domain controllers (DCs) to discover the existence of domains and the existence of DFS namespaces. Clients issue referral requests to DCs in order to discover the DFS root target servers hosting specific DFS namespaces.

Clients can also issue referral requests to DFS root target servers to discover other DFS root target servers that host a DFS namespace. Clients issue referral requests to DFS root target servers to discover the locations of DFS link targets (shares on file servers). After the components of a DFS path have been resolved to specific targets, clients then issue file system requests directly to file servers, using the appropriate remote file system protocol for that server.

In crossing DFS namespaces, clients can attempt to issue file system requests against DFS links. File servers can notify the client of the requirement for name resolution by using designated error messages in file system protocols. Clients then issue referral requests to resolve DFS links into DFS link targets, as specified in section 3.1.5.1. With newly resolved paths, clients then reissue file system requests directly to the appropriate file servers. The DFS links in a DFS namespace can also include paths that point to other DFS namespaces. A DFS link that points to another DFS namespace is called a DFS interlink. For DFS interlinks, if the target is a domain-based DFS namespace, there cannot be more than one target for the link. However, multiple stand-alone DFS namespace targets are supported as DFS interlink targets.

The DFS: Referral Protocol is a command/acknowledge protocol that sends out a sequence of referral requests to eventually resolve the DFS path to an actual path. There are five types of referral requests, as specified in section 2.2.2:

- Domain referrals, which identify the domains in the forest to which the DFS client is joined and the domains in other forests, which are part of a trust relationship with the DFS client's forest.
- DC referrals, which identify the DCs of a specific domain.
- Root referrals, which identify the DFS root targets of a specific DFS namespace.
- Link referrals, which identify the DFS link targets of a specific link in a DFS namespace.
- Sysvol referrals, which identify the DCs that host a domain's SYSVOL or NETLOGON shares.

Domain-joined clients issue all five types of referral requests, while non-domain-joined clients issue only DFS root and DFS link referral requests. Optionally, clients can also be used to administer DFS namespaces (see [MS-DFSNM]).

Clients can maintain local caches of information that are received through referral requests to avoid future referral requests and to improve the performance of DFS resource access, as specified in section 3.1.1.

## 1.4 Relationship to Other Protocols

The DFS: Referral Protocol relies on the Server Message Block (SMB) Protocol, (as specified in [MS-SMB]) or the Server Message Block (SMB) Version 2 Protocol (as specified in [MS-SMB2]), or the Common Internet File System Protocol (as specified in [MS-CIFS]) as its transport layer.

The DFS topology and configuration of DFS namespaces named by referral requests are maintained by the Distributed File System (DFS): Namespace Management Protocol (as specified in [MS-DFSNM]).

The DFS: Referral protocol depends on the Netlogon Remote Protocol Specification (as specified in [MS-NRPC]) to determine the site of the client from the IP address.

The DFS: Referral Protocol allows SMB (as specified in [MS-SMB] and [MS-SMB2]) file system clients to resolve names from a namespace distributed across many servers and geographies into local names on specific file servers. After names have been resolved, clients can directly access files on the identified servers by using file system protocols, such as the SMB Protocol, the SMB Version 2.0 Protocol, the Common Internet File System Protocol, NFS (as specified in [RFC3530]), and NCP (as specified in [NOVELL]).

The DFS: Referral Protocol does not specify a replication protocol for file and directory content between DFS root targets or DFS link targets, nor does it interact with any such protocol. While

replication can be used in a deployment of the DFS: Referral Protocol, it is equally reasonable for the respective targets to have differing content. Enforcing appropriate consistency for file and directory content is a deployment-specific consideration.

All protocols that use SMB to access files on remote machines depend on DFS if those files are located on shares in a DFS namespace.

## 1.5 Prerequisites/Preconditions

### 1.5.1 Common Requirements

The SMB DFS referral request uses the TRANS2\_GET\_DFS\_REFERRAL SMB message, as specified in [MS-SMB]. This is available only in SMB versions beginning with NT LAN Manager 0.12. The SMB2 DFS referral request uses the FSCTL\_DFS\_GET\_REFERRALS IOCTL or the FSCTL\_DFS\_GET\_REFERRALS\_EX IOCTL, as specified in [MS-SMB2].

The DFS: Namespace Referral Protocol requires that the DFS namespace, which is accessed by both the DFS client and the DFS metadata that this protocol uses, has already been set up, possibly through the Distributed File System (DFS): Namespace Management Protocol as specified in [MS-DFSNM]. The protocol also requires that the shares are already set up for a DFS namespace's DFS root and link targets, along with SYSVOL/NETLOGON referral targets when used in domain environments. These shares can be set up as specified in [MS-SRVS].

The DFS: Namespace Referral Protocol defines no security parameters beyond those of its SMB transport.

### 1.5.2 Client

DFS clients that issue referral requests might or might not be joined to a domain. DFS namespaces accessed by the DFS client can be domain-based DFS namespaces or stand-alone DFS namespaces.

### 1.5.3 DC or DFS Root Target Server

To permit the DFS targets in the referral response to be ordered on the basis of site cost between the client site and a DFS target site, a server joined to a domain is required to determine the site cost of a client from the client's IP address, as specified in [MS-NRPC] section 3.5.4.3.8. If the server intends to support DFS referral site costing, it is required to have the ability to perform the site cost queries between the client and the DFS targets, as specified in as specified in [MS-DRSR] section 4.1.16.

The DFS server uses the DFS metadata of a DFS namespace to process referral requests. For domain-based DFS namespaces, the server is required to access the DFS metadata stored in the object of the DFS namespace. Location and format of the DFS metadata is specified in [MS-DFSNM] section 2.3.

## 1.6 Applicability Statement

The DFS: Referral Protocol is applicable for scenarios in which files that are stored across one or more shares—possibly including one or more file servers—and the share administrator would like to provide one or more of the following capabilities.

- A unified namespace across multiple shares, such that from a client's perspective there is no need to know about individual share namespaces.
- A fault-tolerant namespace, such that failure of a share causes the client to fail over to an alternate share.
- A geographically optimized namespace, such that the client will automatically access the share that contains the geographically "lowest cost" copy of the files.

- A share name that is logically independent of the file server or the actual name of the share on the file server.

## 1.7 Versioning and Capability Negotiation

A client specifies the highest DFS referral version supported in the **MaxReferralLevel** field of the REQ\_GET\_DFS\_REFERRAL (section 2.2.2) message.

A server responds with the highest DFS referral version supported by both the client and the server in the **VersionNumber** field of each referral entry, as specified in section 2.2.5.

## 1.8 Vendor-Extensible Fields

There are no vendor-extensible fields defined in the DFS: Referral Protocol.

This protocol uses NTSTATUS values taken from the NTSTATUS number space, as specified in [MS-ERREF]. Vendors SHOULD<1> reuse those values with their indicated meaning. Choosing any other value runs the risk of a collision in the future.

## 1.9 Standards Assignments

None.

## 2 Messages

### 2.1 Transport

The DFS: Referral Protocol uses the Server Message Block (SMB) protocol family as its transport. The specific version of the SMB protocol used for the transport is chosen in the SMB layer. For more information, see [MS-CIFS] section 3.4.4.9.

When the SMB protocol (version 1, as specified in [MS-CIFS] or [MS-SMB]) is used as the transport, the referral request is sent in the form of a REQ\_GET\_DFS\_REFERRAL structure in the Trans2\_Parameters block of the TRANS2\_GET\_DFS\_REFERRAL request within an SMB\_COM\_TRANSACTION2 message, and the referral response is received in a TRANS2\_GET\_DFS\_REFERRAL response within an SMB\_COM\_TRANSACTION2 response. The TRANS2\_GET\_DFS\_REFERRAL request and response messages are specified in [MS-CIFS] sections 2.2.6.16.1 and 2.2.6.16.2. The SMB\_COM\_TRANSACTION2 message is specified in [MS-SMB] section 2.2.4.4.

The underlying SMB protocol implementation MUST support the DFS flags in SMB packets as specified in [MS-SMB]. The assignments used by the SMB Protocol that are relevant to the DFS: Referral Protocol are as follows.

Parameter	Value	Reference
TRANS2_GET_DFS_REFERRAL subcommand type for the SMB_COM_TRANSACTION2 packet.	0x0010	[MS-SMB] section 2.2.4.4 and [MS-CIFS] section 2.2.6.16.1
CAP_DFS bit in the SMB_COM_NEGOTIATE Server Response extension.	0x00001000	[MS-SMB] section 2.2.4.5.2.1
SMB_SHARE_IS_IN_DFS bit in the <b>OptionalSupport</b> field of the SMB_COM_TREE_CONNECT_ANDX response.	0x0002	[MS-SMB] section 2.2.4.7.2
SMB_FLAGS2_DFS bit in the <b>Flags2</b> field of the SMB header.	0x1000	[MS-SMB] section 2.2.3.1

When the SMB Version 2.0 Protocol is used as the transport, the referral request is sent as an SMB2 IOCTL request message. To respond to a referral request, the DFS: Referral Protocol server provides a buffer to the SMB Version 2.0 Protocol as a response, and the SMB Version 2.0 Protocol implementation MUST transfer it using the IOCTL response message. The SMB2 IOCTL request message is specified in [MS-SMB2] section 2.2.31 and the SMB2 IOCTL response message is specified in [MS-SMB2] section 2.2.32.

### 2.2 Message Syntax

This section describes the contents of the two SMB messages used by the DFS: Referral Protocol. These messages are REQ\_GET\_DFS\_REFERRAL (section 2.2.2) and RESP\_GET\_DFS\_REFERRAL (section 2.2.4).

#### 2.2.1 Common Conventions

All paths in REQ\_GET\_DFS\_REFERRAL and RESP\_GET\_DFS\_REFERRAL messages MUST be encoded with exactly one leading backslash, not two leading backslashes as is common to user-visible UNC paths. For example, the UNC path "\\server\namespace\directory\subdirectory\file" would be encoded as "\server\namespace\directory\subdirectory\file".

All strings in REQ\_GET\_DFS\_REFERRAL (section 2.2.2) and RESP\_GET\_DFS\_REFERRAL (section 2.2.4) messages MUST be encoded as null-terminated strings of UTF-16 characters, as specified in [UNICODE]. Constructs of the form "<value>" in strings are placeholders to be replaced with client or

server-specified values. For example, the string description "`<domain>\<namespace>`" would take the form "`\contoso\templates`" when populated with the values "contoso" for the `<domain>` placeholder and "templates" for the `<namespace>` placeholder.

All 16-bit and 32-bit integers in `REQ_GET_DFS_REFERRAL` and `RESP_GET_DFS_REFERRAL` messages MUST be encoded as unsigned little-endian values.

### 2.2.1.1 Host Name

"Host name" refers to the `<servername>` component of the UNC Path specified in section 2.2.1.3.

### 2.2.1.2 Share Name

"Share name" refers to the `<share>` component of the UNC Path specified in section 2.2.1.3.

### 2.2.1.3 UNC Path

A UNC path can be used to access network resources, and MUST be in the format specified by the Universal Naming Convention.

`<servername>`, `<share>` and `<filename>` are referred to as "pathname components" or "path components". A valid UNC path MUST contain two or more path components. `<servername>` is referred to as the "first pathname component", `<share>` as the "second pathname component", and so on. The last component of the path is also referred to as the "leaf component".

The size and valid characters for a path component are defined by the protocol used to access the resource and the type of resource being accessed. The only limitation placed on path components by DFS is that path components MUST be at least one character in length and MUST NOT contain a backslash (`\`) or a null.

### 2.2.1.4 DFS Root

A DFS root MUST be in one of the following UNC path formats.

- `\\<ServerName>\<DFSName>`
- `\\<DomainName>\<DFSName>`

`<ServerName >` is the host name (as specified in section 2.2.1.1) of a DFS root target (as specified in section 2.2.1.6) of the DFS namespace; `<DomainName>` is the domain name of the domain that hosts the domain-based DFS namespace; and `<DFSName>` is the DFS namespace name. Stand-alone DFS namespaces MUST be referred to only by the first path format; domain-based DFS namespaces MUST be referred to in either format, although the second format is preferred.

### 2.2.1.5 DFS Link

A DFS link MUST be in one of the following UNC path formats.

- `\\<ServerName>\<DFSName>\<LinkPath>`

`<ServerName>` is the host name of a DFS root target of the DFS namespace. Used for stand-alone or domain-based DFS namespaces.

- `\\<DomainName>\<DFSName>\<LinkPath>`

`<DomainName>` is the domain name of the domain that hosts the domain-based DFS namespace. Used only for domain-based DFS namespaces.



In both examples, <DFSName> is the DFS namespace name, and <LinkPath> is the path of the DFS link relative to the DFS root target share. For example, if the full path used to access a DFS-based resource is \\contoso\share1\x\y, the DFS root target share is \\contoso\share1 and the DFS link path is x\y.

### 2.2.1.6 DFS Root Target

A DFS root target is a UNC path that MUST be in the following format.

- \\<servername>\<sharename>

<servername> is the host name of a DFS root target server and <sharename> is the sharename corresponding to a DFS namespace on the DFS root target server.

### 2.2.1.7 DFS Target

A DFS target is either a DFS root target or a DFS link target.

## 2.2.2 REQ\_GET\_DFS\_REFERRAL

DFS referral requests are sent in the form of an REQ\_GET\_DFS\_REFERRAL message, by using an appropriate transport as specified in section 2.1.

0	1	2	3	4	5	6	7	8	9	10	1	2	3	4	5	6	7	8	9	20	1	2	3	4	5	6	7	8	9	30	1		
MaxReferralLevel																RequestFileName (variable)																	
...																																	

**MaxReferralLevel (2 bytes):** A 16-bit integer that indicates the highest DFS referral version understood by the client. The DFS referral versions specified by this document are 1 through 4 inclusive. A DFS client MUST support DFS referral version 1 through the version number set in this field. The referral response messages are referral version dependent and are specified in sections 2.2.5.1 through 2.2.5.4.

**RequestFileName (variable):** A null-terminated Unicode string specifying the path to be resolved. The specified path MUST NOT be case-sensitive. Its format depends on the type of referral request, as specified in section 3.1.4.2.

## 2.2.3 REQ\_GET\_DFS\_REFERRAL\_EX

DFS referral requests sent in the form of an REQ\_GET\_DFS\_REFERRAL\_EX message take the following format:

0	1	2	3	4	5	6	7	8	9	10	1	2	3	4	5	6	7	8	9	20	1	2	3	4	5	6	7	8	9	30	1		
MaxReferralLevel																RequestFlags																	
RequestDataLength																																	
RequestData (variable)																																	

...

**MaxReferralLevel (2 bytes):** A 16-bit integer that indicates the highest DFS referral version understood by the client. The DFS referral versions specified by this document are 1 through 4 inclusive. A DFS client **MUST** support DFS referral version 1 through the version number set in this field. The referral response messages are referral version dependent and are specified in section 2.2.5.

**RequestFlags (2 bytes):** This field **MUST** contain zero or more of the following values:

Value	Meaning
SiteName 0x00000001	SiteName present: The SiteName bit <b>MUST</b> be set to 1 if the packet contains the site name of the client.

If the SiteName flag is set in the RequestFlags field, then the RequestData buffer **MUST** contain both SiteNameLength and SiteName data.

**RequestDataLength (4 bytes):** A 32-bit integer that specifies the length of the **RequestData** field.

**RequestData (variable):** The format for RequestData is given in section 2.2.3.1.

**2.2.3.1 RequestData**

RequestData is part of the REQ\_GET\_DFS\_REFERRAL\_EX message (section 2.2.3).

0	1	2	3	4	5	6	7	8	9	10	11	12	13	14	15	16	17	18	19	20	21	22	23	24	25	26	27	28	29	30	31
RequestFileNameLength																RequestFileName (variable)															
...																															
SiteNameLength (optional)																SiteName (variable)															
...																															

**RequestFileNameLength (2 bytes):** A 16-bit integer value that specifies the length of the RequestFileName string in the referral request.

**RequestFileName (variable):** A Unicode string specifying the path to be resolved. The specified path **MUST** be interpreted in a case-insensitive manner. Its format depends on the type of referral request, as specified in section 3.1.4.2.

The following fields are optional and used only when the SiteName flag in **RequestFlags** is set.

**SiteNameLength (2 bytes):** A 16-bit integer value that specifies the length of the SiteName string in the referral request.

**SiteName (variable):** A Unicode string specifying the name of the site to which the DFS client computer belongs. The length of this string is determined by the value of the SiteNameLength field.

## 2.2.4 RESP\_GET\_DFS\_REFERRAL

A DFS server responds to a DFS client referral request with the RESP\_GET\_DFS\_REFERRAL message. The fixed-length portion of this message is referred to as the "referral header" in this document. The format of this message is as follows.

0	1	2	3	4	5	6	7	8	9	10	11	12	13	14	15	16	17	18	19	20	21	22	23	24	25	26	27	28	29	30	31
PathConsumed																NumberOfReferrals															
ReferralHeaderFlags																															
ReferralEntries (variable)																															
...																															
StringBuffer (variable)																															
...																															
Padding (variable)																															
...																															

**PathConsumed (2 bytes):** A 16-bit integer indicating the number of bytes—not characters—in the prefix of the referral request path that is matched in the referral response.

**NumberOfReferrals (2 bytes):** A 16-bit integer indicating the number of referral entries immediately following the referral header.

**ReferralHeaderFlags (4 bytes):** A 32-bit field representing a series of flags that are combined by using the bitwise OR operation. Only the R, S, and T bits are defined and used. The other bits MUST be set to 0 by the server and ignored upon receipt by the client.

Value	Meaning
R 0x00000001	R (ReferralServers): The R bit indicates whether all of the targets in the referral entries returned are DFS root targets capable of handling DFS referral requests.
S 0x00000002	S (StorageServers): The S bit indicates whether all of the targets in the referral response can be accessed without requiring further referral requests.
T 0x00000004	T (TargetFailback): The T bit indicates whether DFS client target failback is enabled for all targets in this referral response. This value MUST be set to 0 by the server and ignored by the client for all DFS referral versions except DFS referral version 4.

**ReferralEntries (variable):** As many DFS\_REFERRAL\_V1, DFS\_REFERRAL\_V2, DFS\_REFERRAL\_V3, or DFS\_REFERRAL\_V4 structures as indicated by the **NumberOfReferrals** field.

**StringBuffer (variable):** A list of zero or more null-terminated Unicode character strings.

**Padding (variable):** The server MAY<2> insert a variable number of padding bytes.

## 2.2.5 Referral Entry Types

The DFS: Referral Protocol defines four structures used to encode referral entries: DFS\_REFERRAL\_V1 (section 2.2.5.1), DFS\_REFERRAL\_V2 (section 2.2.5.2), DFS\_REFERRAL\_V3 (section 2.2.5.3), and DFS\_REFERRAL\_V4 (section 2.2.5.4).

All referral entries in a RESP\_GET\_DFS\_REFERRAL message MUST use the same referral entry structure. As a consequence, all referral entries in a RESP\_GET\_DFS\_REFERRAL message MUST have the same value in their respective **VersionNumber** fields. The **VersionNumber** field defines the version number of the entire referral response.

The **VersionNumber** field also provides a more descriptive name to a referral entry or referral response. It is conventional to refer to a "version *N*" referral entry or a "version *N*" referral response, meaning a referral entry with a VersionNumber of *N* (of type DFS\_REFERRAL\_V*N*) or a referral response containing entries with a VersionNumber of *N*, respectively.

Each referral entry structure has a 16-bit **Size** field. The **Size** field indicates the total size, in bytes, of the referral entry. Clients MUST add the value of the **Size** field in a referral entry to the offset of that referral entry to find the offset of the next referral entry in the RESP\_GET\_DFS\_REFERRAL message.

The DFS\_REFERRAL\_V2, DFS\_REFERRAL\_V3, and DFS\_REFERRAL\_V4 structures contain fields with offsets to strings. Clients MUST add the string offset to the offset of the beginning of the referral entry to find the offset of the string in the RESP\_GET\_DFS\_REFERRAL message. The strings referenced from the fields of a referral entry MUST follow the last referral entry in the RESP\_GET\_DFS\_REFERRAL message.

Examples of referral response packets of DFS referral versions 2 and 3 are specified in section 4.

### 2.2.5.1 DFS\_REFERRAL\_V1

The format of the version 1 referral entry is as follows.

0	1	2	3	4	5	6	7	8	9	10	11	12	13	14	15	16	17	18	19	20	21	22	23	24	25	26	27	28	29	30	31
VersionNumber																Size															
ServerType																ReferralEntryFlags															
ShareName (variable)																															
...																															

**VersionNumber (2 bytes):** A 16-bit integer indicating the version number of the referral entry. MUST always be 0x0001 for DFS\_REFERRAL\_V1.

**Size (2 bytes):** A 16-bit integer indicating the total size of the referral entry in bytes.

**ServerType (2 bytes):** A 16-bit integer indicating the type of server hosting the target.

Value	Meaning
0x0000	Non-root targets returned.
0x0001	Root targets returned.

**ReferralEntryFlags (2 bytes):** A series of bit flags. MUST be set to 0x0000 and ignored on receipt.

**ShareName (variable):** A null-terminated Unicode character string that specifies a DFS target.

### 2.2.5.2 DFS\_REFERRAL\_V2

The format of the version 2 referral entry is as follows.

0	1	2	3	4	5	6	7	8	9	10	11	12	13	14	15	16	17	18	19	20	21	22	23	24	25	26	27	28	29	30	31
VersionNumber																Size															
ServerType																ReferralEntryFlags															
Proximity																															
TimeToLive																															
DFSPathOffset																DFSAlternatePathOffset															
NetworkAddressOffset																															

**VersionNumber (2 bytes):** A 16-bit integer indicating the version number of the referral entry. MUST always be 0x0002 for DFS\_REFERRAL\_V2.

**Size (2 bytes):** A 16-bit integer indicating the total size of the referral entry in bytes.

**ServerType (2 bytes):** A 16-bit integer indicating the type of server hosting the target.

Value	Meaning
0x0000	Non-root targets returned.
0x0001	Root targets returned.

**ReferralEntryFlags (2 bytes):** MUST be set to 0x0000 by the server and ignored on receipt by the client.

**Proximity (4 bytes):** MUST be set to 0x00000000 by the server and ignored by the client.

**TimeToLive (4 bytes):** A 32-bit integer indicating the time-out value, in seconds, of the DFS root or DFS link.

**DFSPathOffset (2 bytes):** A 16-bit integer indicating the offset, in bytes, from the beginning of this referral entry to the DFS path that corresponds to the DFS root or the DFS link for which target information is returned.

**DFSAlternatePathOffset (2 bytes):** A 16-bit integer indicating the offset, in bytes, from the beginning of this referral entry to the DFS path that corresponds to the DFS root or the DFS link for which target information is returned.

**NetworkAddressOffset (2 bytes):** A 16-bit integer indicating the offset, in bytes, from the beginning of this referral entry to the network address of the DFS target that corresponds to this entry.

### 2.2.5.3 DFS\_REFERRAL\_V3

The format of the common elements of a version 3 referral entry is as follows. The entry continues in section 2.2.5.3.1 or 2.2.5.3.2, dependent on the value of the NameListReferral flag in the **ReferralEntryFlags** field.

0	1	2	3	4	5	6	7	8	9	10	11	12	13	14	15	16	17	18	19	20	21	22	23	24	25	26	27	28	29	30	31
VersionNumber																Size															
ServerType																ReferralEntryFlags															
TimeToLive																															

**VersionNumber (2 bytes):** A 16-bit integer indicating the version number of the referral entry. MUST be set to 0x0003, specifying DFS\_REFERRAL\_V3.

**Size (2 bytes):** A 16-bit integer indicating the total size of the referral entry, in bytes.

**ServerType (2 bytes):** A 16-bit integer indicating the type of server hosting the target.

Value	Meaning
0x0000	Non-root targets returned.
0x0001	Root targets returned.

**ReferralEntryFlags (2 bytes):** A 16-bit field representing a series of flags that are combined by using the bitwise OR operation. Only the NameListReferral bit is defined for DFS\_REFERRAL\_V3. The other bits MUST be set to zero by the server.

Value	Meaning
NameListReferral 0x0002	MUST be set for a domain referral response or a DC referral response.

**TimeToLive (4 bytes):** A 32-bit integer indicating the time-out value, in seconds, of the DFS root or DFS link.

The following subsections define the remainder of the structure, which is dependent on whether the NameListReferral flag in the **ReferralEntryFlags** field has a value of 0 or 1 in.

#### 2.2.5.3.1 NameListReferral Flag Set to 0

When the NameListReferral flag in the **ReferralEntryFlags** field is 0, the remainder of the version 3 referral entry MUST be formatted as follows.

0	1	2	3	4	5	6	7	8	9	10	11	12	13	14	15	16	17	18	19	20	21	22	23	24	25	26	27	28	29	30	31
DFSPathOffset																DFSAlternatePathOffset															
NetworkAddressOffset																ServiceSiteGuid (16 bytes)															

...															
...															
...															

**DFSPathOffset (2 bytes):** A 16-bit integer indicating the offset, in bytes, from the beginning of this referral entry to the DFS path that corresponds to the DFS root or DFS link for which target information is returned. The DFS path **MUST** be a null-terminated string.

**DFSAlternatePathOffset (2 bytes):** A 16-bit integer indicating the offset, in bytes, from the beginning of this referral entry to the DFS path that corresponds to the DFS root or DFS link for which target information is returned.

**NetworkAddressOffset (2 bytes):** A 16-bit integer indicating the offset, in bytes, from the beginning of this referral entry to the network address of the DFS target that corresponds to this entry. The DFS path **MUST** be a null-terminated string.

**ServiceSiteGuid (16 bytes):** These 16 bytes **MUST** always be set to 0 by the server and ignored by the client. For historical reasons, this field was defined in early implementations but never used.

### 2.2.5.3.2 NameListReferral Flag Set to 1

When the NameListReferral flag in the **ReferralEntryFlags** field is 1, the remainder of the version 3 referral entry **MUST** be formatted as follows.

0	1	2	3	4	5	6	7	8	9	10	11	12	13	14	15	16	17	18	19	20	21	22	23	24	25	26	27	28	29	30	31
SpecialNameOffset																NumberOfExpandedNames															
ExpandedNameOffset																Padding (variable)															
...																															

**SpecialNameOffset (2 bytes):** A 16-bit integer indicating the offset, in bytes, from the beginning of the referral entry to a domain name.

**NumberOfExpandedNames (2 bytes):** A 16-bit integer indicating the number of DCs being returned for a DC referral request. **MUST** be set to 0 for a domain referral response.

**ExpandedNameOffset (2 bytes):** A 16-bit integer indicating the offset, in bytes, from the beginning of this referral entry to the first DC name string returned in response to a DC referral request.

**Padding (variable):** The server **MAY** insert zero or 16 padding bytes that **MUST** be ignored by the client. <3>

### 2.2.5.4 DFS\_REFERRAL\_V4

The format of the version 4 referral entry **MUST** be exactly the same as the format of the DFS\_REFERRAL\_V3 referral entry, with two exceptions.

The value of the **VersionNumber** field **MUST** be 0x0004 for DFS\_REFERRAL\_V4.

The **ReferralEntryFlags** field contains an additional flag that can be set as follows.

Value	Meaning
T 0x0004	T (TargetSetBoundary): This bit is set if the target corresponding to this referral entry is the first target of a target set. The first referral entry MUST have this bit set in a DFS version 4 referral response.

The other bits of the **ReferralEntryFlags** field MUST be set to 0 by the server and ignored upon receipt by the client.



## 3 Protocol Details

The following sections specify details of the Distributed File System (DFS): Namespace Referral Protocol, including abstract data models, higher-layer triggered events, and message processing events and sequencing rules.

### 3.1 DFS Client Details

In this section, unless stated otherwise, the term "client" refers to a DFS client.

#### 3.1.1 Abstract Data Model

This section describes a conceptual model of possible data organization that an implementation maintains to participate in this protocol. The organization is provided to explain how the protocol behaves. This document does not mandate that implementations adhere to this model as long as their external behavior is consistent with that described in this document.

Because the DFS clients effectively block an application from accessing a specific file share until the DFS: Referral Protocol can map the DFS root name to an actual file server path, it is advantageous to cache DFS referral responses. Because of this, clients SHOULD maintain local caches of information received through referral requests to avoid future referral requests and to improve the performance of DFS resource access.

- **BootstrapDC:** Applicable only for a computer joined to a domain. This contains the name of a DC from which the DFS client will obtain a list of domain referral entries, in addition to a list of DC host names for a domain.
- **DomainCache:** Applicable only for a computer joined to a domain. This cache contains a list of trusted domains in both NetBIOS and fully qualified domain name forms, in addition to a list of DC host names for each domain. Conceptually, this is an array of tuples of the form <DomainName, DCHint, DCList>. Cache lookup involves finding a DomainCache entry with a matching DomainName. This can be used to check for a valid domain name or to find a DC host name for a given domain name. DCHint identifies a DC host name from DCList that is the DC that was last successfully used by the DFS client.
- **ReferralCache:** This cache contains root, link, and sysvol referral responses. A hit on a ReferralCache entry indicates that the path in a name resolution operation is a DFS Root, DFS link, or a SYSVOL/NETLOGON share.

A ReferralCache entry conceptually contains entries indexed by a DFS path prefix, DFSPathPrefix. An entry is a tuple of the form <DFSPathPrefix, RootOrLink, Interlink, TTL, TargetFailback, TargetHint, TargetList>.

DFSPathPrefix is the DFS path that corresponds to a DFS root or a DFS link, and is the same as the string pointed to by the **DFSPathOffset** of a DFS\_REFERRAL\_V2, DFS\_REFERRAL\_V3 or DFS\_REFERRAL\_V4 referral entry.

RootOrLink identifies whether the entry contains DFS root targets or DFS link targets. It reflects the value from the **ServerType** field of a referral entry (as specified in sections 2.2.5.1, 2.2.5.2, 2.2.5.3, and 2.2.5.4).

Interlink identifies whether the entry contains a target in another DFS namespace, as determined by the test in section 3.1.5.4.5.

TargetFailback is used only for DFS\_REFERRAL\_V4 and contains the value from the TargetFailback bit of the referral header (as specified in section 2.2.4).

TTL contains a value derived from the **TimeToLive** field of a referral entry (as specified in sections 2.2.5.1, 2.2.5.2, 2.2.5.3, and 2.2.5.4). This is the time stamp at which a ReferralCache entry is

considered to be expired. An implementation is free to come up with soft and hard time-outs based on the **TimeToLive** field of the referral entry, for example. The soft time-out can be used to initiate a ReferralCache entry refresh operation while permitting the use of the ReferralCache entry; the hard time-out limit can be used to fail any operation using the ReferralCache entry if all attempts to refresh it fail.<4>

TargetHint identifies a target in TargetList that was last successfully used by the DFS client. TargetList consists of tuples of the form <TargetPath, TargetSetBoundary>, where TargetPath is the string pointed to by the **NetworkAddressOffset** field (as specified in sections 2.2.5.2, 2.2.5.3, and 2.2.5.4). TargetSetBoundary is only present in V4 referrals and reflects the value from the TargetSetBoundary of the referral entry (as specified in section 2.2.5.4).

### 3.1.2 Timers

**BootstrapDCTimer:** This timer is applicable only to a domain-joined client. This timer is used to regularly update the value of BootstrapDC with the name of the domain controller (DC) in the domain of the client.

### 3.1.3 Initialization

A client MUST initialize BootstrapDC and BootstrapDCTimer after joining a domain.<5>

### 3.1.4 Higher-Layer Triggered Events

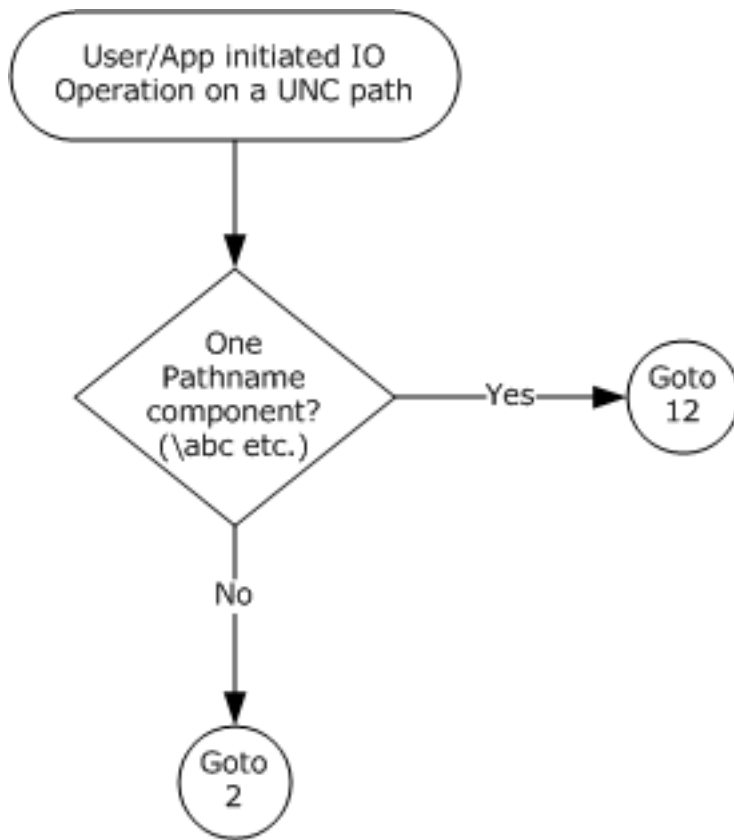
#### 3.1.4.1 User/Application Initiated I/O Operation on a UNC Path

The calling application provides:

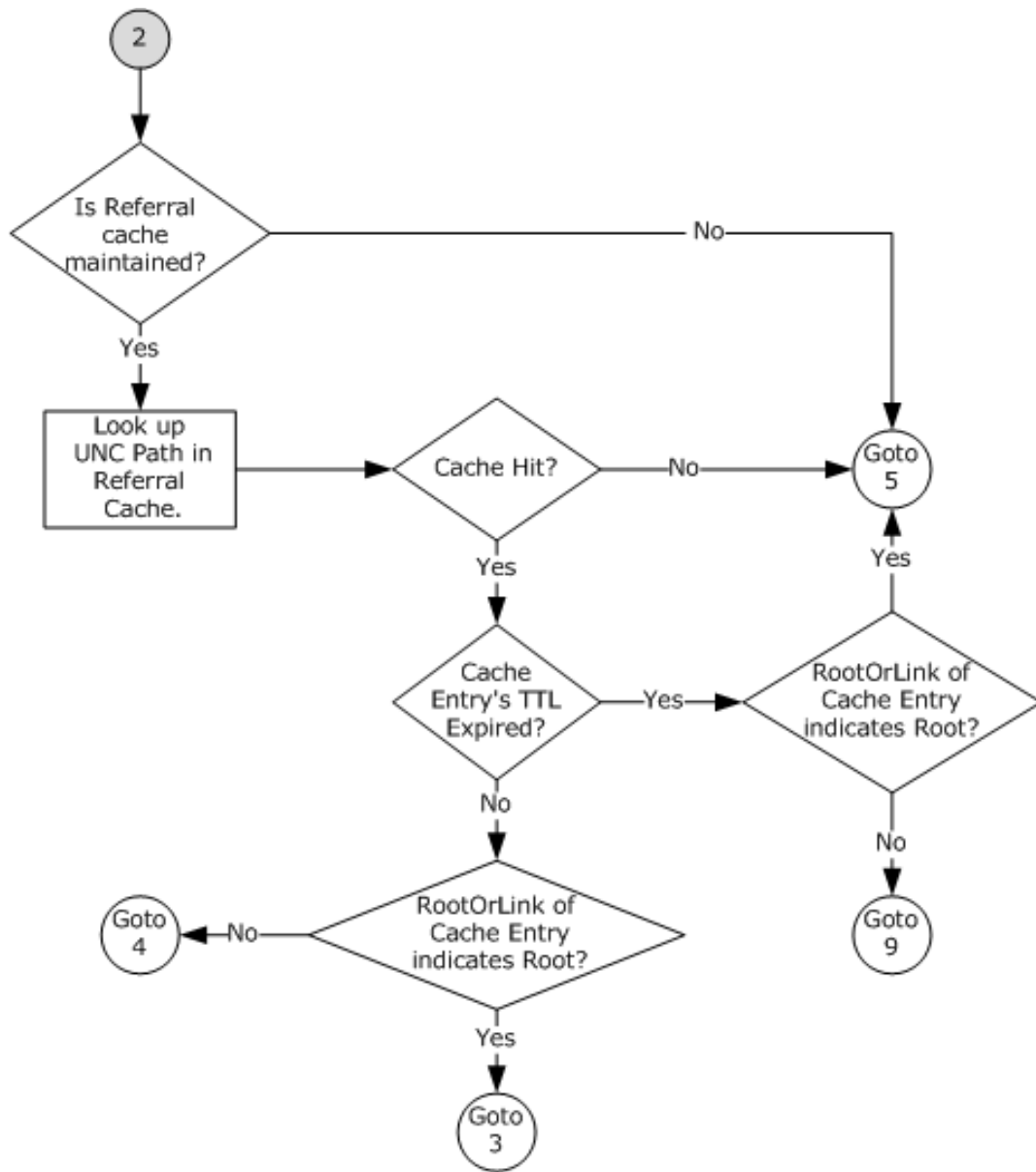
- Implementation-specific information on the I/O operation to be performed.
- **Path** indicating the UNC path on which the I/O operation is to be performed.
- **UserCredentials** to be used for performing I/O operation on the UNC path.
- **MaxOutputSize** indicating the maximum output buffer size, in bytes.

When the DFS client receives an I/O operation with a UNC path, it MUST normalize the UNC path to the protocol format with one leading backslash (as specified in section 2.2.1) and perform a name resolution. See the following flowcharts for an illustration of the process. In some cases, individual steps have a description of the condition at entry of the step inside square brackets [like this].

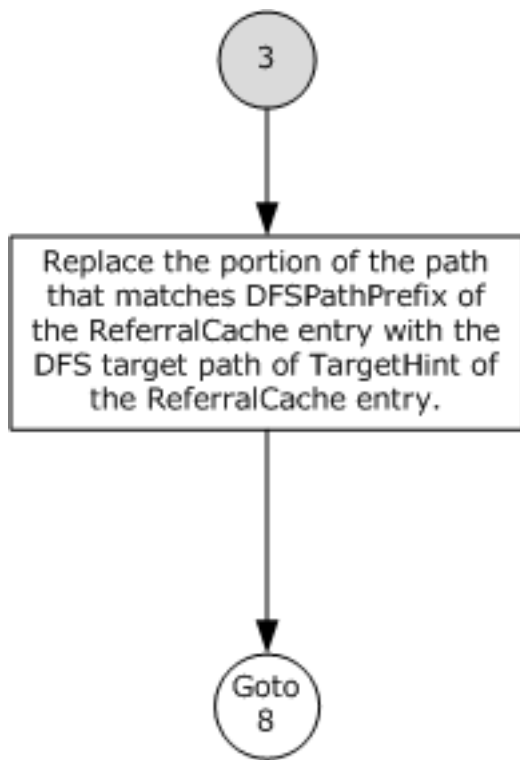
The following flowcharts show the steps taken by a DFS client to resolve a DFS path.



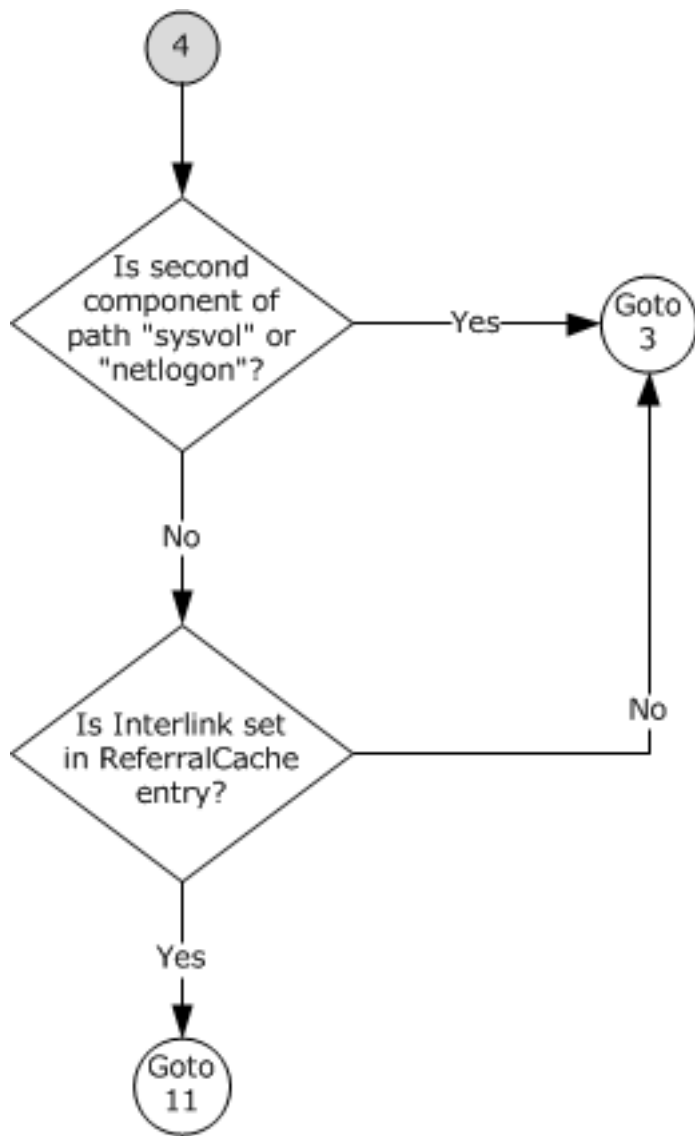
**Figure 1: DFS path resolution – initial steps**



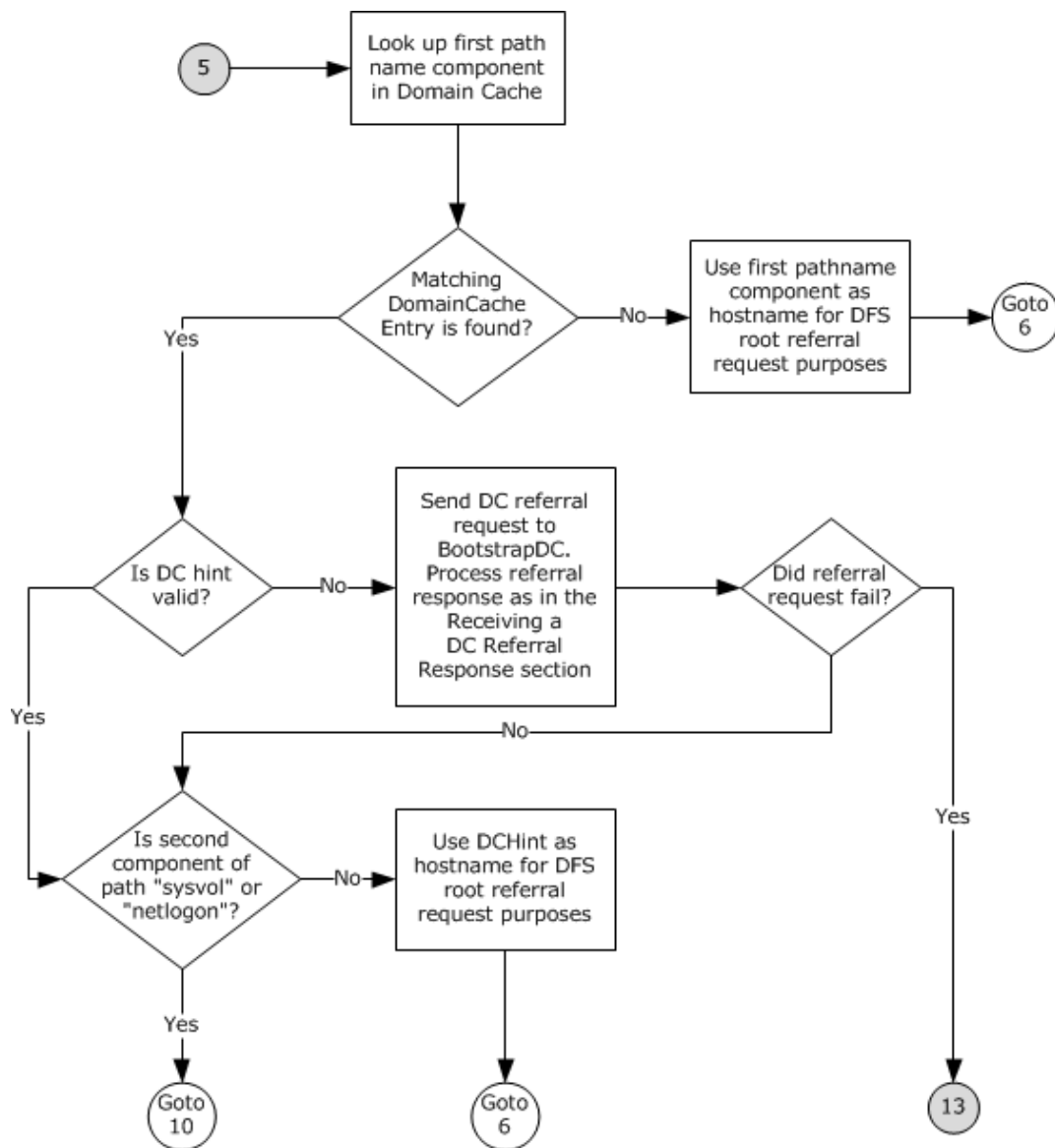
**Figure 2: DFS path resolution – connection 2**



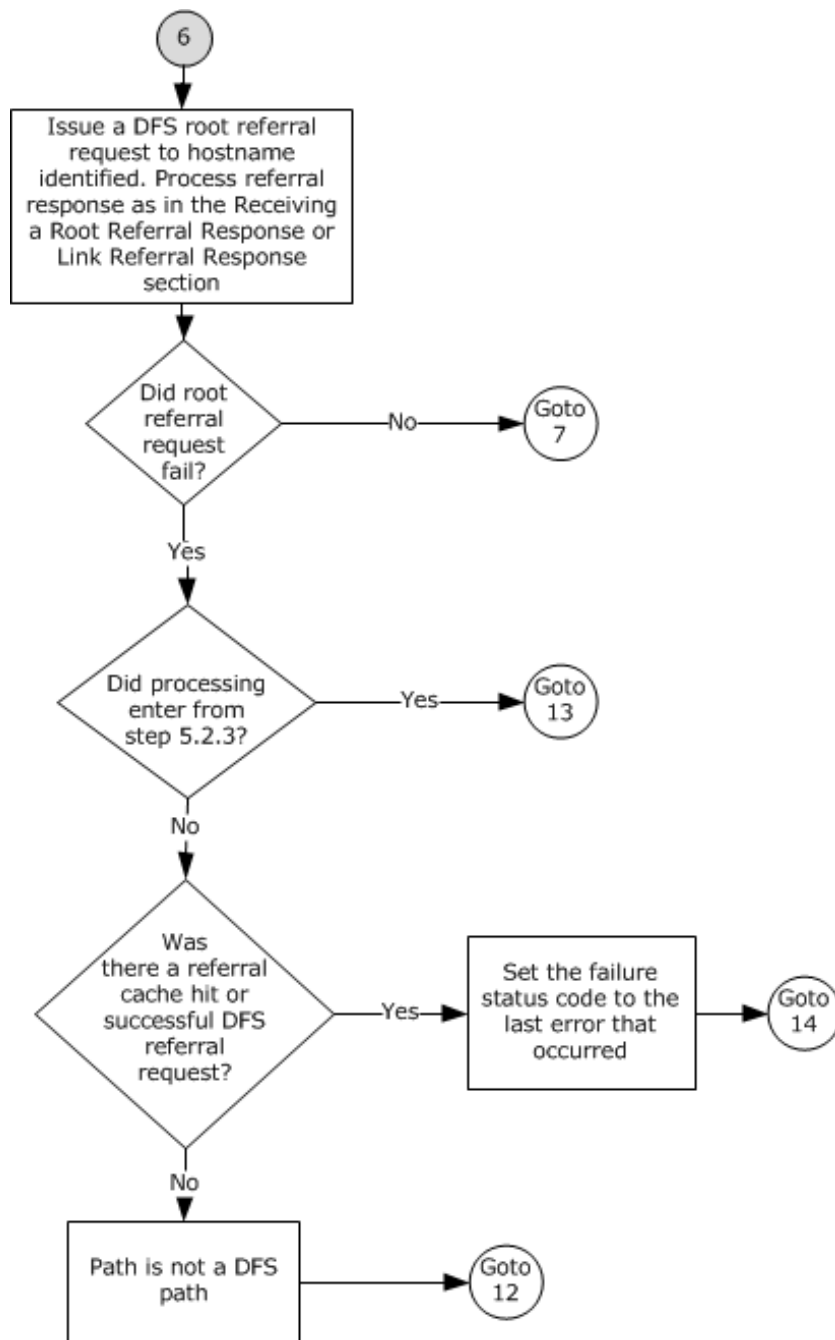
**Figure 3: DFS path resolution - connection 3**



**Figure 4: DFS path resolution - connection 4**

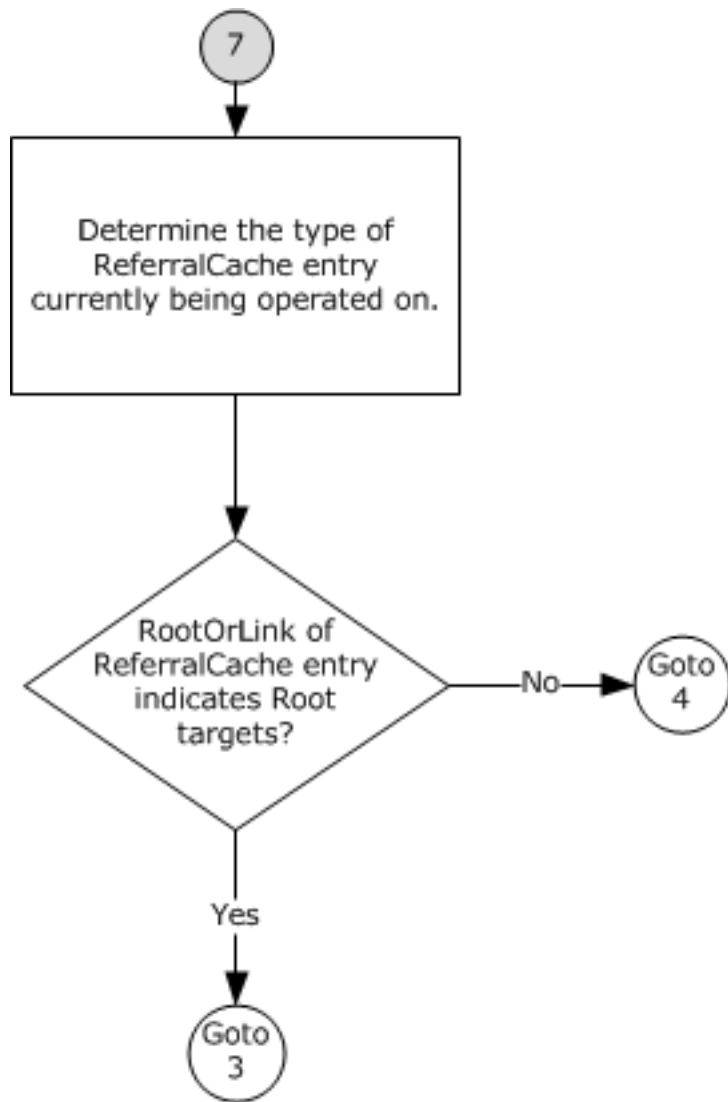


**Figure 5: DFS path resolution - connection 5**

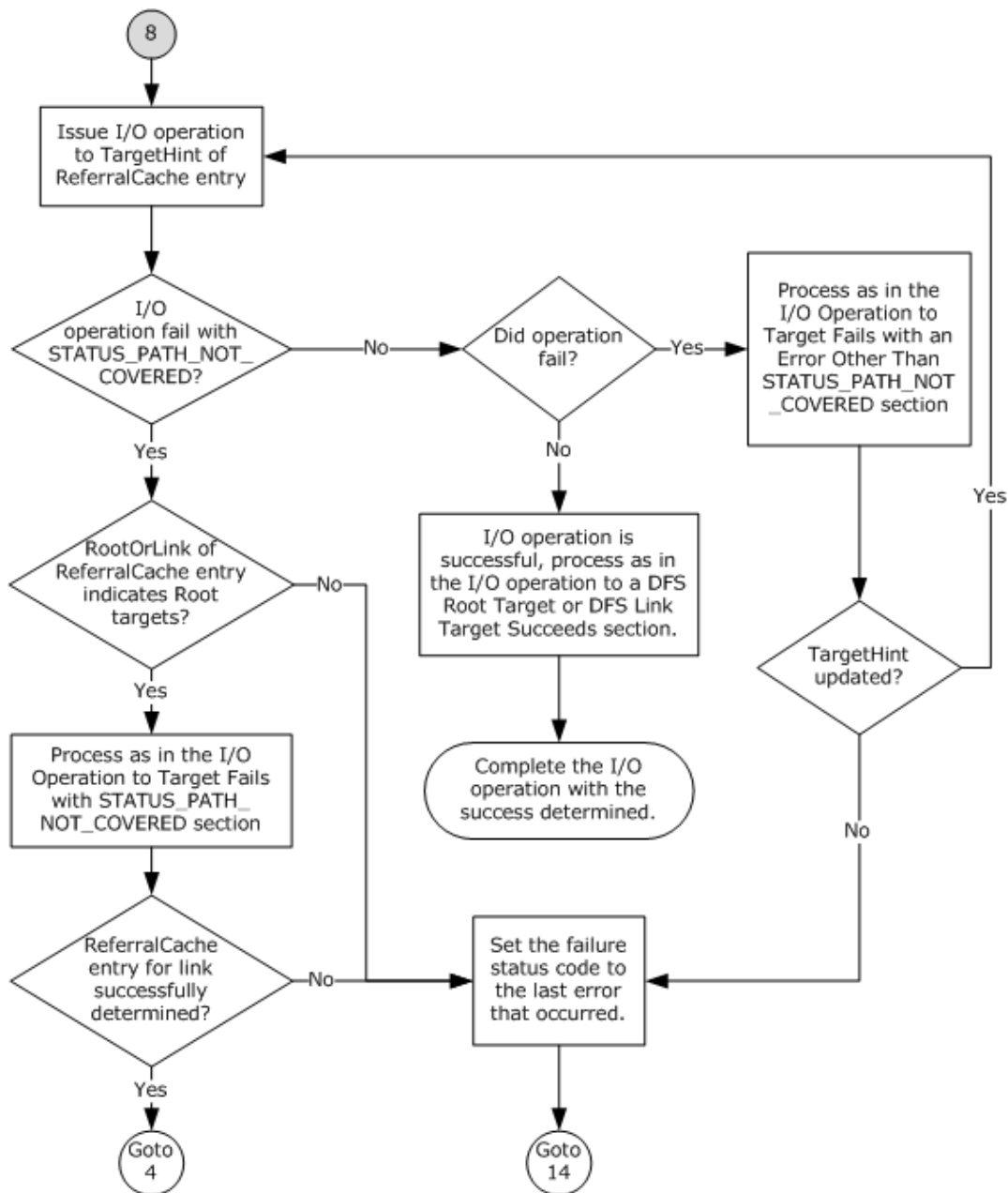


**Figure 6: DFS path resolution - connection 6**

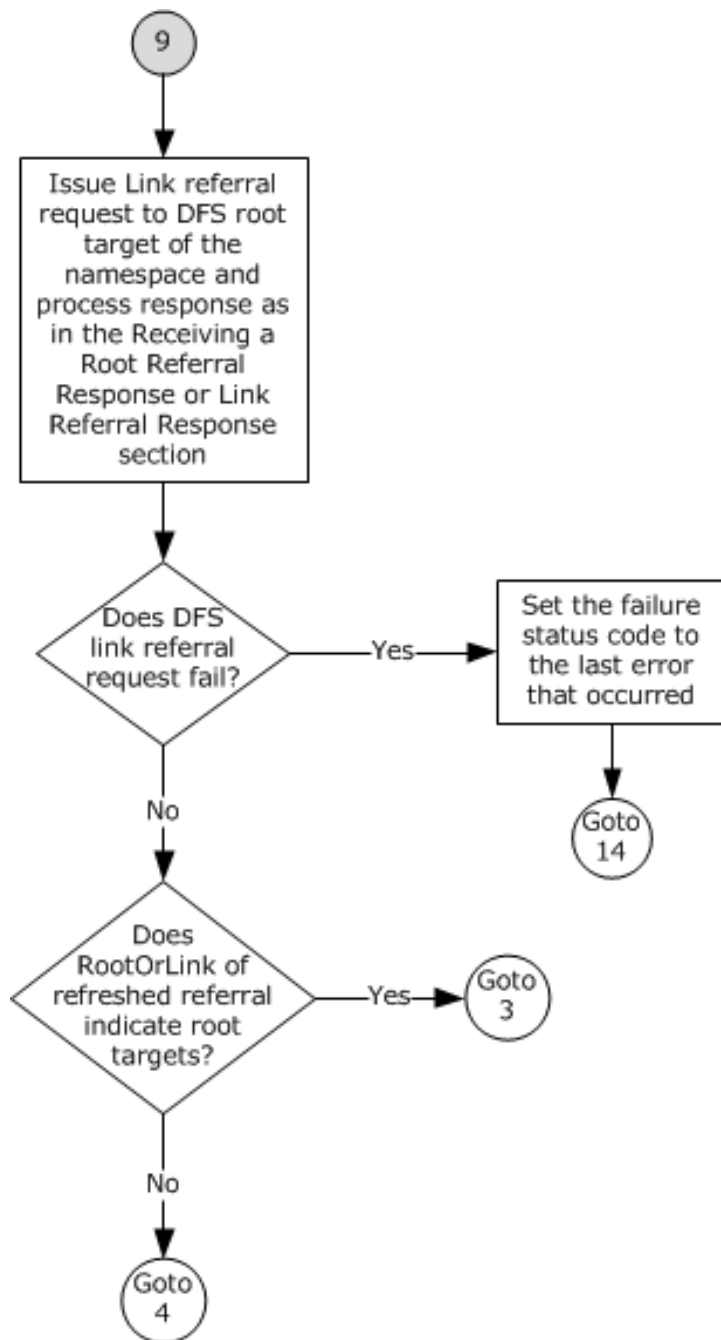




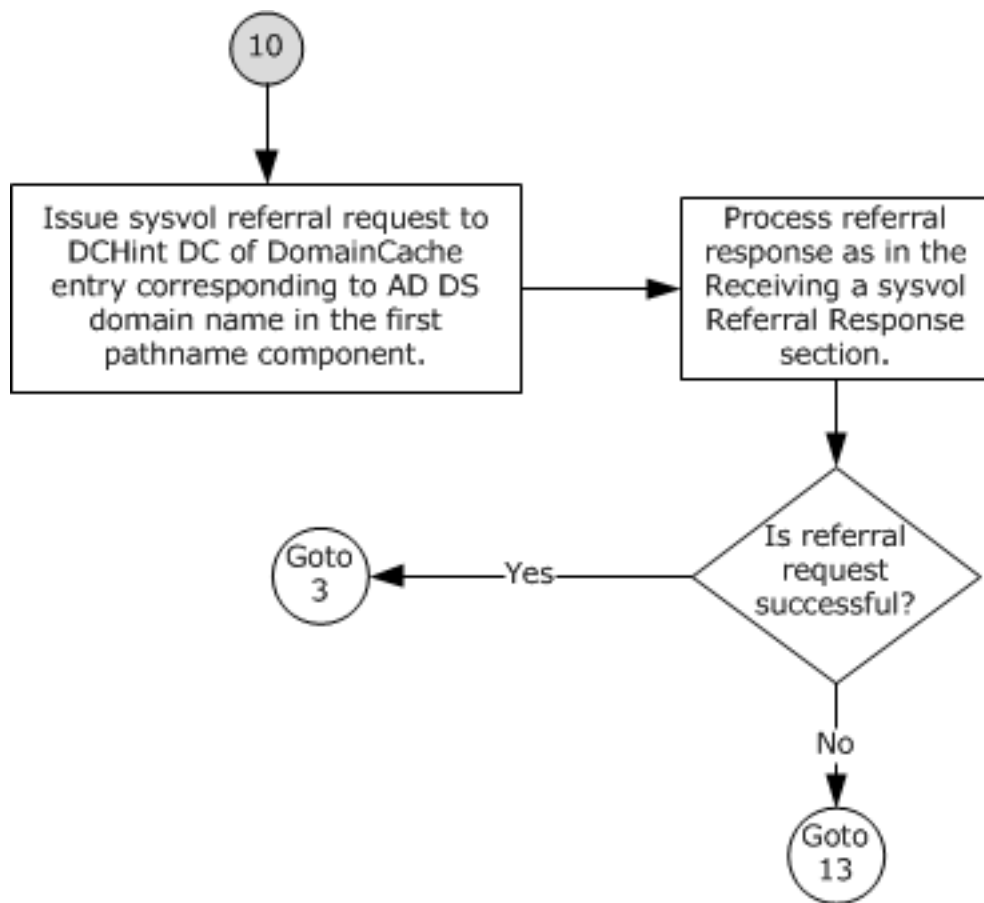
**Figure 7: DFS path resolution - connection 7**



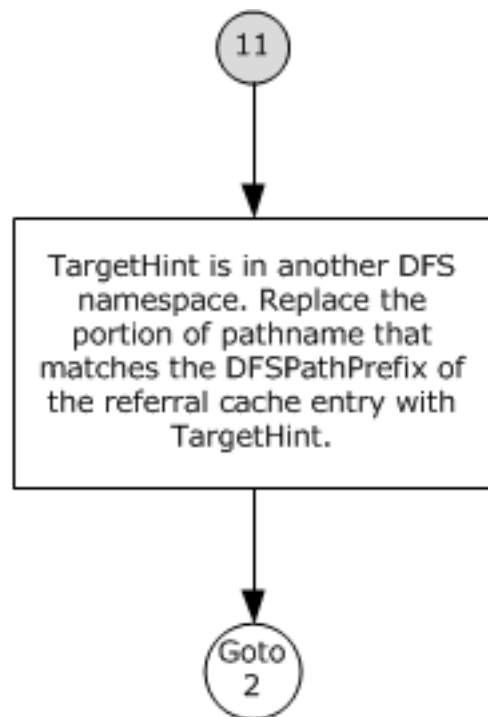
**Figure 8: DFS path resolution - connection 8**



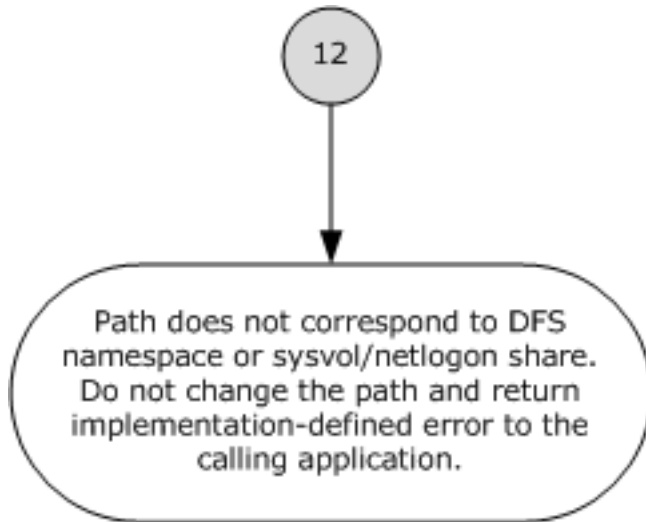
**Figure 9: DFS path resolution - connection 9**



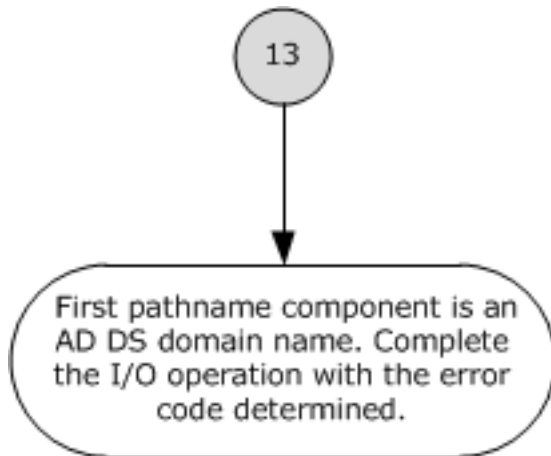
**Figure 10: DFS path resolution - connection 10**



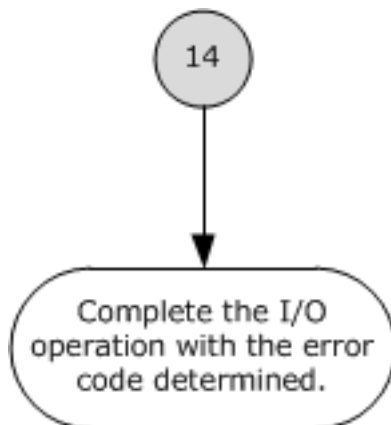
**Figure 11: DFS path resolution - connection 11**



**Figure 12: DFS path resolution - connection 12**



**Figure 13: DFS path resolution - connection 13**



**Figure 14: DFS path resolution - connection 14**

The following procedure specifies a possible implementation for resolving a UNC path. This example uses a cache to avoid repeated referral requests, thereby improving the performance of the DFS client. A lookup in ReferralCache involves searching for an entry with DFSPathPrefix that is a complete prefix of the path being looked up. Whole path components are used in the match. Also, the ReferralCache entry with the longest match is used. For the lookup path of \MyDomain\MyDfs\MyDir\file1, if there are two ReferralCache entries, one for \MyDomain\MyDfs and another for \MyDomain\MyDfs\MyDir, the latter is the longest match. This document does not mandate that implementations adhere to this model, as long as their external behavior is consistent with the behavior described.

1. If the path has only one path component (for example, \abc), go to step 12; otherwise, go to step 2.
2. Look up the path in ReferralCache if a cache is being maintained. If no cache is being maintained, go to step 5.
  1. If no matching entry is found in ReferralCache, go to step 5.
  2. If an entry's TTL has expired:
    - If RootOrLink indicates DFS root targets, go to step 5.
    - If RootOrLink indicates DFS link targets, go to step 9.
  3. If an entry contains DFS link targets as indicated by RootOrLink, go to step 4; otherwise, go to step 3.
3. [ReferralCache hit, unexpired TTL] Replace the portion of the path that matches DFSPathPrefix of the ReferralCache entry with the DFS target path of TargetHint of the ReferralCache entry. For example, if the path is \MyDomain\MyDfs\MyDir and the ReferralCache entry contains \MyDomain\MyDfs with a DFS target path of \someserver\someshare\somepath, the effective path becomes \someserver\someshare\somepath\MyDir. Go to step 8.
4. [ReferralCache hit, unexpired TTL, RootOrLink=link]
  1. If the second component of the path is "SYSVOL" or "NETLOGON" go to step 3.
  2. Check the Interlink element of the ReferralCache entry.
    - If Interlink is set in the ReferralCache entry, then the TargetHint is in another DFS namespace. Go to step 11.
    - If Interlink is not set in the ReferralCache entry then the TargetHint is not in another DFS namespace. Go to step 3.
5. [ReferralCache miss] [ReferralCache hit, expired TTL, RootOrLink=root] Look up the first path component in DomainCache.
  1. If no matching DomainCache entry is found, use the first path component as the host name for DFS root referral request purposes. Go to step 6.
  2. If a matching DomainCache entry is found:
    1. If DCHint is not valid, send DC referral request, as specified in section 3.1.4.2, providing "DC", **BootstrapDC**, **UserCredentials**, **MaxOutputSizeff**, and **Path** as parameters. The processing of the referral response is specified in section 3.1.5.4.2. If the referral request fails, go to step 13.
    2. If the second path component is "SYSVOL" or "NETLOGON", go to step 10.
    3. Use DCHint as host name for DFS root referral request purposes.

6. [DFS root referral request] Issue a DFS root referral request, as specified in section 3.1.4.2, providing "ROOT", the first path component, **UserCredentials**, **MaxOutputSize**, and **Path** as parameters. The processing of the referral response and/or error is as specified in section 3.1.5.4.3, which will update the ReferralCache on success. On DFS root referral request success, go to step 7. On DFS root referral request failure:
  1. If the immediately preceding processing step was step 5, this is a domain name or path. Go to step 13.
  2. If processing of this I/O request encountered a ReferralCache hit, or one of its DFS referral requests succeeded (as would have occurred in the case of a previous Interlink - see step 11 - or a domain root referral, when entering from step 5), the path is in a DFS namespace. Go to step 14.
  3. The path is not a DFS path and no further processing is required. Go to step 12.
7. [DFS root referral success] If the current ReferralCache entry's RootOrLink indicates root targets, go to step 3; otherwise, go to step 4.
8. [I/O request, path fully resolved] Issue I/O operation to TargetHint of ReferralCache entry.
  1. If the I/O operation fails with STATUS\_PATH\_NOT\_COVERED.
    - If the RootOrLink of ReferralCache entry indicates link targets, set the failure status to the last error that occurred and go to step 14.
    - If the RootOrLink of ReferralCache entry indicates root targets, the process is as specified in section 3.1.5.1. If this processing does not successfully determine a ReferralCache entry to traverse the link, set the failure status to the last error that occurred and go to step 14.
    - ReferralCache entry for the link determined successfully. Go to step 4.
  2. If the I/O operation fails with an error other than STATUS\_PATH\_NOT\_COVERED, then the process is as specified in section 3.1.5.2. If the processing of that section specifies a new TargetHint, repeat step 8. Otherwise, set the failure status to the last error that occurred and go to step 14.
  3. If the I/O operation is successful, the process is as specified in section 3.1.5.3. Complete the I/O operation and user/application-initiated I/O request with success.
9. [ReferralCache hit, expired TTL, RootOrLink=link] The link referral request is issued to a DFS root target of the namespace. Find the root ReferralCache entry corresponding to the first two path components, noting that this will already be in the cache due to processing that resulted in acquiring the expired link ReferralCache entry. Issue a DFS link referral request, as specified in section 3.1.4.2, providing "LINK", **TargetHint** of the root ReferralCache entry, **UserCredentials**, **MaxOutputSize**, and **Path** as parameters, and process the DFS referral response and/or error as specified in section 3.1.5.4.3, which will update the ReferralCache on success. If the DFS Link referral request fails, set the failure status to the last error that occurred and go to step 14. Otherwise:
  1. If the RootOrLink of the refreshed ReferralCache entry indicates DFS root targets, go to step 3.
  2. If the RootOrLink of the refreshed ReferralCache entry indicates DFS link targets, go to step 4.
10. [sysvol referral request] Issue a sysvol referral request, as specified in section 3.1.4.2, providing 'SYSVOL', the DCHint DC of the DomainCache entry that corresponds to the domain name in the first path component, **UserCredentials**, **MaxOutputSize**, and **Path** as parameters. The processing of the referral response and/or error is as specified in section 3.1.5.4.4, which will

update the ReferralCache on success. If the referral request is successful, go to step 3; otherwise, go to step 13.

11. [interlink] Replace the portion of the path that matches the DFSPathPrefix of the ReferralCache entry with TargetHint. For example, if the path is \MyDomain\MyDfs\MyLink\MyDir and the referral entry contains \MyDomain\MyDfs\MyLink with a DFS target path of \someserver\someshare\somepath, the effective path becomes \someserver\someshare\somepath\MyDir. Go to step 2.
12. [not DFS] The path does not correspond to a DFS namespace or a SYSVOL/NETLOGON share. Do not change the path, and return an implementation-defined error.<6> The user/application initiated I/O request is handled by the local operating system.
13. [Cannot get DC for domain] The first path component is a domain name. Fail the I/O operation and user/application-initiated I/O request with the last error code that occurred before the jump to this step.
14. [DFS path] The path is known to be in a DFS namespace, but the DFS root referral request or DFS Link referral request has failed. Complete the user/application-initiated I/O request with the error code that occurred before the jump to this step.

#### 3.1.4.2 Sending a DFS Referral Request to the Server

This interface is only used internally by the DFS client to send a DFS referral request to a specific server. The caller provides the following:

- **Type**: A string identifying the type of the referral request.
- **HostName**: The name of the server from which to query referrals.
- **UserCredentials**: An opaque implementation-specific entity that identifies the credentials to be used when authenticating to the remote server.
- **MaxOutputSize**: The maximum output buffer response size, in bytes.
- **Path**: The path for which referral information is to be queried.

The client MUST initiate a server session with the SMB server, as specified in [MS-CIFS] section 3.4.4.7, by passing **HostName** and **UserCredentials** as input parameters and receiving an opaque **ClientGenericContext**, as specified in [MS-CIFS] section 3.4.

The client MUST verify the local configuration on extended referrals in an implementation-specific manner<7>, and MUST also query the server's extended referral capability by invoking the event as specified in [MS-CIFS] section 3.4.4.12.

If both the tests return TRUE, the client MUST construct the **REQ\_GET\_DFS\_REFERRAL\_EX** request, as specified in section 2.2.3, with the following parameters:

- MaxReferralLevel is set to the corresponding Type as specified in the following table.
- RequestFlags is set to 1.
- RequestFileName is set to **Path**.
- SiteName is set in an implementation-specific manner.<8>

If any of the tests return FALSE, the client MUST construct a **REQ\_GET\_DFS\_REFERRAL** request, as specified in section 2.2.2, with the following parameters:

- MaxReferralLevel is set to the corresponding Type as specified in the following table.



- RequestFileName is set to **Path**.

The client MUST query the DFS referral, as specified in [MS-CIFS] section 3.4.4.9, by passing ClientGenericContext, HostName, UserCredentials, MaxOutputSize, the **REQ\_GET\_DFS\_REFERRAL\_EX** or **REQ\_GET\_DFS\_REFERRAL** structure as the input buffer, and the FSCTL code set to FSCTL\_DFS\_GET\_REFERRALS, if the input buffer is an **REQ\_GET\_DFS\_REFERRAL**, or FSCTL\_DFS\_GET\_REFERRALS\_EX, if the input buffer is an **REQ\_GET\_DFS\_REFERRAL\_EX**.

Type	RequestFileName	MaxReferralLevel
DOMAIN	An empty string (containing just the null terminator).	3 or higher
DC	"\<domain>" or "<domain>", where <domain> is a domain name that can be in either NetBIOS or fully qualified domain name forms.	3 or higher
SYSVOL	Either "\<domain>\SYSVOL" or "\<domain>\NETLOGON", where <domain> is a domain name that can be in either NetBIOS or fully qualified domain name forms.	No restriction
ROOT	Of the form either "\<domain>\<dfsname>" or "\<server>\<dfsname>", where <domain> is the name of the domain that hosts the DFS namespace, <dfsname> is the name of a DFS namespace, and <server> is a DFS root target host name.	No restriction
LINK	Of the form either "\<domain>\<dfsname>\<linkpath>" or "\<server>\<dfsname>\<linkpath>", where <domain> is the name of the domain that hosts the DFS namespace, <dfsname> is the name of a DFS namespace, <server> is a DFS root target host name, <linkpath> is a path that can have a DFS link.	No restriction

The client MUST wait synchronously for the completion of the referral request and pass the referral response received from the server to the caller. If the request fails with STATUS\_DFS\_UNAVAILABLE, the client MUST return the same error code to the caller.

The client MUST validate that the returned referral response is properly formed, (section 2.2.5). If the response is ill-formed, the client MUST fail the referral request and return the error code STATUS\_INVALID\_NETWORK\_RESPONSE to the caller.

### 3.1.5 Message Processing Events and Sequencing Rules

#### 3.1.5.1 I/O Operation to Target Fails with STATUS\_PATH\_NOT\_COVERED

When an I/O operation that is issued to a link target fails with STATUS\_PATH\_NOT\_COVERED (0xC0000257), the client MUST fail the original I/O request.

When an I/O operation issued to a DFS root target server in step 8 of section 3.1.4.1 fails with STATUS\_PATH\_NOT\_COVERED (0xC0000257), it indicates that the portion of the DFS namespace accessed by the client is not contained in the DFS root target server.

To identify the DFS link targets that contain the required portion of the DFS namespace, the client MUST look up the path used for the I/O operation in ReferralCache. On a cache hit, the resulting ReferralCache entry MUST be used in further processing.

Otherwise, the client MUST obtain the file attributes of the DFS link as specified in [MS-CIFS] section 3.2.4.12 or [MS-SMB2] section 3.2.4.8 based on the protocol transport.

If the file attributes include FILE\_ATTRIBUTE\_REPARSE\_POINT, the client MUST issue a DFS link referral request, as specified in section 3.1.4.2, providing as parameters "LINK", the DFS root target server specified by the TargetHint of the ReferralCache entry corresponding to the DFS namespace,

**UserCredentials**, **MaxOutputSize**, and **Path**. The **Path** parameter MUST be set to the path in the I/O operation issued to the DFS root target in step 8 of section 3.1.4.1. The client MUST process the DFS referral response as specified in section 3.1.5.4.3, which will update the ReferralCache.<9> The resulting ReferralCache entry, if any, MUST be used in further processing.

### 3.1.5.2 I/O Operation to Target Fails with an Error Other Than STATUS\_PATH\_NOT\_COVERED

When an I/O operation issued to the target server identified by the TargetHint of the ReferralCache entry used returns an NTSTATUS value with the **Sev** field set to 2 or 3, as specified in [MS-ERREF] section 2.3, and the NTSTATUS value is not equal to STATUS\_PATH\_NOT\_COVERED (0xC0000257), the next target, if any, from TargetList of ReferralCache entry MAY<10> be selected. When the next target is not selected, or there are no additional targets in the ReferralCache entry, the client MUST fail the user/application-initiated I/O operation and return the same NTSTATUS value that was returned to the client.

If a new target was selected from the TargetList, the TargetHint of the selected ReferralCache entry MUST have its value set to the selected target. This is a performance optimization for future operations that use the same ReferralCache entry, and is a case of "DFS client target failover".

### 3.1.5.3 I/O Operation to a DFS Root Target or DFS Link Target Succeeds

When the operation issued to a DFS root target or DFS link target returns an NTSTATUS value with the **Sev** field set to 0 or 1, as specified in [MS-ERREF] section 2.3, the DFS client MUST complete the user/application-initiated I/O operation with the NTSTATUS value that was returned to the client.

### 3.1.5.4 Receiving a Referral Response

The DFS client receives the referral response in the form of RESP\_GET\_DFS\_REFERRAL (section 2.2.4). If the **NumberOfReferrals** field is at least 1, the client MUST determine the version number of the referral response by accessing the **VersionNumber** field of the first referral entry immediately following the referral header and interpreting the referral entry as specified in section 2.2.5.

The **NumberOfReferrals** field in the referral header contains the number of referral entries in the response. The first referral entry immediately follows the referral header in the RESP\_GET\_DFS\_REFERRAL message (section 2.2.4). From a given referral entry, the next referral entry is accessed by adding the **Size** field of the referral entry to the address of the given referral entry. The client MUST ignore the Padding field if present.

When a DFS path resolves to multiple referral entries, and the client supplies a buffer insufficiently large to hold the entries, the client can experience a non-deterministic server response.

If a DFS referral request fails with STATUS\_BUFFER\_OVERFLOW (0x80000005), the client SHOULD retry the referral request with a bigger buffer size.<11> Response data buffer size is determined as specified in section 3.2.5.1.

#### 3.1.5.4.1 Receiving a Domain Referral Response

This is applicable only to a domain-joined computer. The client receives this response for the domain referral request that it issued to BootstrapDC (as specified in section 3.1.6). The domain referral response MUST be version 3 or later; otherwise, the client MUST ignore the referral response.

The client MUST discard referral responses that do not have the NameListReferral bit of each referral entry set. The other bits of **ReferralEntryFlags** in the referral entry MUST be ignored. The client can access the null-terminated Unicode domain name contained in a referral entry by adding the value in the **SpecialNameOffset** field of the referral entry to the address of the referral entry.

The client MUST add the domain names received in the referral response to DomainCache, if empty. If DomainCache already has domain names, the client MUST add only those domain names to DomainCache that are not already in it. The client MAY remove those domain names from DomainCache that are not in the referral response.<12>

The DFS client MUST NOT modify the DomainCache on a domain referral failure.

### 3.1.5.4.2 Receiving a DC Referral Response

This is applicable only to a domain-joined computer. The DFS client receives this referral response for the DC referral request that it sent in step 5.2 of section 3.1.4.1. The DC referral response MUST be version 3 or later; otherwise, the client MUST ignore the referral response.

The client MUST verify that the **NumberOfReferrals** field of the referral header is 1 and that the NameListReferral bit is set in the referral entry. The other bits of **ReferralEntryFlags** in the referral entry MUST be ignored. The **NumberOfExpandedNames** in the referral entry contains the number of DC names returned. The client MUST use the value in the **NumberOfExpandedNames** field to determine how many names are present in the list at **ExpandedNameOffset**. The client can access the first null-terminated Unicode DC name string that is returned by adding the value in the **ExpandedNameOffset** field to the address of the referral entry. Immediately following the null termination of a DC name is the next DC name returned. The client can access the null-terminated Unicode domain name that corresponds to the referral response by adding the value in the **SpecialNameOffset** to the address of the referral entry.

The client MUST add the list of DCs determined for a domain name to DCList of the DomainCache entry that corresponds to the domain name. If the DomainCache entry's DCList is not empty, the client MUST replace it with the DC list from the referral response and set DCHint to the first DC in the new DCList.

### 3.1.5.4.3 Receiving a Root Referral Response or Link Referral Response

This section describes the processing that occurs when the client gets a referral response after sending a DFS root referral request in step 6 of section 3.1.4.1 or a link referral request in either step 9 of section 3.1.4.1 or in section 3.1.5.1.

If the referral request is successful, but the **NumberOfReferrals** field in the referral header (as specified in section 2.2.4) is 0, the DFS server could not find suitable targets to return to the client. In this case, the client MUST fail the original I/O operation with STATUS\_OBJECT\_PATH\_NOT\_FOUND.

If the referral request returns an NTSTATUS value with the Sev field set to 2 or 3, as specified in [MS-ERREF] section 2.3, process as follows:

- In the case of a referral request sent to a DC (steps 5.4 and 6 of section 3.1.4.1), the client MAY<13> issue a root referral request to the next DC from the DCList of the DomainCache entry, as in step 6 of section 3.1.4.1. If all DCs from the DCList have been tried, the DFS client MUST fail the user/application-initiated I/O operation with STATUS\_OBJECT\_PATH\_NOT\_FOUND.

When the root referral request sent to a DC is successful, the client SHOULD set the DCHint of the DomainCache entry used to that DC. The DCHint serves as a performance optimization for future operations.

- In the case of a link referral request: the client MAY<14> issue a link referral request to the next target from the TargetList of the ReferralCache entry, as in section 3.1.5.2. If all the targets in ReferralCache entry have been tried, the client MUST fail the user/application-initiated I/O operation and return the same NTSTATUS value that was returned to the client.

When the link referral request sent to a root target is successful, the client SHOULD set the TargetHint of the ReferralCache entry to that root target. The TargetHint serves as a performance optimization for future operations.

- In any other case: the DFS client MUST fail the user/application-initiated I/O operation and return the same NTSTATUS value.

If the client sends a DFS root referral request and receives a referral response with the **ServerType** field of the referral response entry (as specified in section 2.2.5) set to 0x0000, a link referral response is being returned. <15>

The client can access the null-terminated Unicode DFS target path contained in a referral entry by adding the value in the **NetworkAddressOffset** field (as specified in section 2.2.4) of the referral entry to the address of the referral entry. The client can access the null-terminated Unicode DFS root or link path that corresponds to the referral response by adding the value in the **DFSPathOffset** field (as specified in section 2.2.4) of the referral entry to the address of the referral entry.

If this response is due to a referral request that was sent in step 6 of section 3.1.4.1 or section 3.1.5.1 on a ReferralCache miss, the client MUST create a new ReferralCache entry from the referral response and set TargetHint to the first target in TargetList. For a DFS referral version 4 response, the client MUST set TargetSetBoundary of each target in TargetList to the value of the TargetSetBoundary bit of the referral entry (see section 2.2.5.4). The client MUST set the value of RootOrLink in ReferralCache entry based on the **ServerType** field of the referral entry. The client MUST set the value of the Interlink flag based on the test in section 3.1.5.4.5.

If this response is due to a referral request that was sent in step 2.2 in section 3.1.4.1 to refresh an existing but expired ReferralCache entry, the client MUST perform the following steps:

- Update the TargetList of the ReferralCache entry from the referral response, unless the following condition holds: if the targets contained in the TargetList of the ReferralCache entry and those returned in the referral response are equivalent, the client MUST NOT update the TargetList in the ReferralCache entry. The equivalence check operation is specified as follows:
  - DFS referral version 4 response: The number of target sets is the same, and each target set in the ReferralCache entry and the referral response contain the same targets, independent of their order with the target set.
  - DFS referral version 1, 2, or 3 response: The ReferralCache entry and the referral response contain the same targets, independent of their order.
- Update the TTL and TargetFailback in the ReferralCache entry from the referral response.
- Update the Interlink flag from the referral response, based on the test in section 3.1.5.4.5.
- If the target specified by the TargetHint is not present in the referral response, set the TargetHint to point to the first target of the TargetList in ReferralCache.
- If the TargetFailback is set in the ReferralCache entry, and if the TargetHint is not in the first target set of the TargetList, set the TargetHint to point to the first target in the first target set of the TargetList. This is referred to as a DFS client target failback. Target failback can also be performed at instances other than just at ReferralCache entry refresh time based on an implementation-defined policy.

If an attempt to refresh an existing but expired ReferralCache entry fails, an implementation-defined error behavior MAY be used. For example, the client can initiate ReferralCache entry refresh at the end of a soft time-out period (as specified in section 3.1.1) while permitting the use of the entry and either discard it at the end of a hard time-out period (as specified in section 3.1.1) or fail the I/O operations that use the ReferralCache entry. <16>

#### 3.1.5.4.4 Receiving a sysvol Referral Response

The client receives this referral response for the sysvol referral request that it sent in step 10 of section 3.1.4.1.

This referral response MUST be handled in the same manner as that of a ROOT referral response, as specified in section 3.1.5.4.3.

### 3.1.5.4.5 Determining Whether a Referral Response is an Interlink

A referral response is an Interlink if either of the following two conditions holds:

- If the ReferralServers and StorageServers bits of the **ReferralHeaderFlags** field in the referral header (as specified in section 2.2.4) are set to 1 and 0 respectively.
- If the TargetList has one entry, and a lookup of the first path component of the TargetList entry against the DomainCache results in a cache hit, indicating that the path refers to a domain namespace.

### 3.1.6 Timer Events

**BootstrapDCTimer:** When this timer expires, the DFS client MUST update BootstrapDC with the name of a DC in the domain of the client. It MUST then issue a domain referral (as specified in section 2.2.2) to the Bootstrap DC and process the response as specified in section 3.1.5.4.1. It MUST then restart the timer.

### 3.1.7 Other Local Events

On joining a domain, the client updates its BootstrapDC, issues a domain referral to the BootstrapDC, and enables the BootstrapDCTimer, as specified in section 3.1.6. On leaving a domain to join a workgroup, the client disables the BootstrapDCTimer.

## 3.2 DFS Root Target Server Details

A DFS root target server hosts the DFS root of a DFS namespace. This section specifies how a DFS root target server processes and responds to DFS referral requests from DFS clients. If the server is also a DC, it MUST also conform to the specification in section 3.3.

DFS root target servers respond to DFS root referral requests and DFS link referral requests.<17>

### 3.2.1 Abstract Data Model

This section describes a conceptual model of possible data organization that an implementation maintains to participate in this protocol. The organization is provided to explain how the protocol behaves. This document does not mandate that implementations adhere to this model as long as their external behavior is consistent with that described in this document. The following state MUST be maintained at the DFS Server:

**HomeDomain:** Applicable only for a computer joined to a domain. MUST be the name of a domain to which the computer is joined. Maintained both in NetBIOS and fully qualified domain name forms. This is used to access the DFS metadata of a domain-based DFS namespace hosted by the server.

**DFSNamespaceList:** MUST be a list of domain-based and stand-alone DFS root targets hosted by the server. Used while processing DFS referral requests from DFS clients.

**DFSMetadataCache:** Cache that MUST contain the DFS metadata of DFS namespaces for which the server is a root target. The cache MUST be maintained as specified in [MS-DFSNM] section 3.1.

#### 3.2.1.1 Algorithm for sorting target sites in referral response based on site location

The DFS server places the target servers in the referral response in the following order:

- Targets in the same site as the client are listed at the top of the referral response in random order.
- Targets outside the client's site are appended to the response in random order.

### 3.2.1.2 Algorithm for sorting target sites in referral response based on site cost

The server performs the following actions:

- Partition the targets into target sets, based on targets of equal site cost relative to the client.
- Sort the target sets from lowest to highest site cost.
- Place the targets within each target set in a random order.

### 3.2.2 Timers

None.

### 3.2.3 Initialization

When the DFS server is started:

- It MUST notify the SMB server for reasons as specified in [MS-CIFS] section 3.3.4.3 and [MS-SMB2] section 3.3.4.8. The exact means of how this is accomplished is outside the scope of this specification.
- It MUST initialize HomeDomain with the domain name of the domain to which it is joined, if any.
- It MUST initialize DFSNamespaceList to the list of domain-based and stand-alone DFS namespaces that it hosts. This list can be obtained from DFS metadata (as specified in [MS-DFSNM]), a configuration file, a configuration store, or from other implementation-defined means.

### 3.2.4 Higher-Layer Triggered Events

#### 3.2.4.1 Handling a Path Normalization Request

As specified in [MS-SMB2] section 3.3.5.9 and [MS-SMB] section 3.3.5.5, the SMB server invokes the DFS server to normalize the path name.

- If the DFS namespace initialization (as specified in section 3.2.3) corresponding to the share in the path is not yet complete, the DFS server MUST fail the path normalization request with STATUS\_DFS\_UNAVAILABLE.
- Otherwise, the DFS server matches the path name against DFS metadata. If the path matches or contains a DFS link, the DFS server MUST respond to the path normalization request with STATUS\_PATH\_NOT\_COVERED, indicating to the client to resolve the path by using a DFS link referral request. Otherwise, the DFS server MUST change the path name to a path relative to the root of the namespace and return STATUS\_SUCCESS. For example, if the path name is "\MyDomain\MyDfs\MyDir\file1", then the DFS server MUST change the path name to "MyDir\file1".

#### 3.2.4.2 Handling a DFS Referral Request

The caller provides the following:

**IpAddress:** The IP address of the client.

**Buffer:** The buffer containing one of the DFS referral request packets as specified in sections 2.2.2 and 2.2.3.

**IsExtendedReferral:** A Boolean value that, if set, indicates the referral request contained in the Buffer parameter is of the form REQ\_GET\_DFS\_REFERRAL\_EX, as specified in section 2.2.3.

**MaxOutputResponse:** The maximum response buffer size that the calling application will accept.

The server processes this request as specified in section 3.2.5.1.

## 3.2.5 Message Processing Events and Sequencing Rules

### 3.2.5.1 Receiving a DFS Referral Request

The server receives DFS referral requests from clients when they need to resolve DFS paths into file server paths.

The **MaxReferralLevel** field of the REQ\_GET\_DFS\_REFERRAL (section 2.2.2) or REQ\_GET\_DFS\_REFERRAL\_EX (section 2.2.3) message contains the highest DFS referral version understood by the client. The server MUST respond with a version number less than or equal to the value specified by the client in the request. It SHOULD respond with the highest version number that it supports that can meet this constraint.<18>

The server MUST determine the maximum response data buffer size specified by the client. The source of this information depends on the transport protocol used by the client, as follows:

- If the transport protocol is SMB [MS-SMB], the TRANS2\_GET\_DFS\_REFERRAL SMB packet, as specified in [MS-CIFS] section 2.2.6.16.1, contains this information. It is passed to the DFS server as specified in [MS-CIFS] section 3.3.5.38.
- If the transport protocol is SMB2 [MS-SMB2], the SMB2 I/O control (IOCTL) request packet, as specified in [MS-SMB2] section 2.2.31, contains this information. It is passed to the DFS server as specified in [MS-SMB2] section 3.3.5.15.2.

The server MUST restrict the referral response to the response data buffer size. It MUST NOT return partial referral entries. If the response data buffer size does not permit at least one complete referral entry, the server MUST fail the referral request with STATUS\_BUFFER\_OVERFLOW (0x80000005). The server MAY<19> set the **Padding** field with a variable number of padding bytes.

Processing of individual referral requests is explained in the following sections.

### 3.2.5.2 Receiving a Domain Referral Request

A server that is not running on a DC MUST fail this request with a STATUS\_INVALID\_PARAMETER (0xC000000D) return code.

### 3.2.5.3 Receiving a DC Referral Request

A server that is not running on a DC MUST fail this request with a STATUS\_INVALID\_PARAMETER (0xC000000D) return code.

### 3.2.5.4 Receiving a sysvol Referral Request

A server that is not running on a DC MUST fail this request with a STATUS\_NOT\_FOUND (0xC0000225) return code.<20>

### 3.2.5.5 (Updated Section) Receiving a Root Referral Request or Link Referral Request

If the DFS namespace for which referral is sought, as identified by the second path component, is not present in DFSNamespaceList, for a stand-alone namespace the server SHOULD<21> fail the referral request with a STATUS\_NOT\_FOUND (0xC0000225) return code, and for a domain-based DFS namespace the server SHOULD<22> fail the referral request with a STATUS\_DFS\_UNAVAILABLE (0xC000026D) return code.

If the DFS referral request path has more than two components, the server MUST attempt to find a DFS link in the DFSNamespaceList, which is a prefix match starting with the DFS Namespace root name of the DFS referral request path. For example, if the DFS referral request path is "\MyServer\MyDfs\dir1\link1\dir2", the DFS link "\MyDfs\dir1\link1" is a prefix match starting with the DFS Namespace root name of the DFS referral request path. On the other hand, the same DFS link is not a prefix match starting with the DFS Namespace root name of the DFS referral request path "\MyServer\MyDfs\dir1\link2\dir2". The server MUST do the comparison in a case-insensitive manner, taking into account the situation of a DFS referral request path whose first path component is in the fully qualified domain name form when the DFS root or DFS link's first path component is in the NetBIOS form (or vice versa). NetBIOS and fully qualified domain names MUST be supported for a DFS referral request path.

If a DFS link that is a prefix match starting with the DFS Namespace root name of the DFS referral request path is identified, the server MUST return a DFS link referral response; otherwise, if it has a match for the DFS root, it MUST return a root referral response.

For a domain-based DFS namespace, the server MUST use the DFS metadata in the object of the DFS namespace (as specified in [MS-DFSNM] section 2.3) to respond to the DFS referral request. The DFS metadata is set as specified in [MS-DFSNM] section 3.1.4.1. When the server maintains DFSMetadataCache, it MAY use the cached information to respond to referral requests. The relevant fields in the DFS metadata for a domain-based DFS namespace are as follows:

- The DFSNamespaceRootBLOB contains DFS root information.
- The DFSNamespaceLinkBLOB contains DFS link information.
- The **Prefix** and **ShortPrefix** fields of a DFS DFSRootOrLinkIDBLOB MUST contain a DFS root or a DFS link name.
- The **ReferralTTL** field of a DFSNamespaceRootBLOB or a DFSNamespaceLinkBLOB MUST contain the time-out associated with the DFS root or link.
- The DFSTargetListBLOB of a DFSNamespaceRootBLOB or a DFSNamespaceLinkBLOB MUST contain DFS root or DFS link target information.
- The PKT\_ENTRY\_TYPE\_COST\_BASED\_SITE\_SELECTION bit in the **Type** field of a DFSRootOrLinkIDBLOB of a DFSNamespaceRootBLOB MUST be set to indicate that the DFS referral site costing is enabled for the DFS namespace.
- The PKT\_ENTRY\_TYPE\_TARGET\_FAILBACK and PKT\_ENTRY\_TYPE\_INSITE\_ONLY bits in the **Type** field of a DFSRootOrLinkIDBLOB of a DFSNamespaceRootBLOB or a DFSNamespaceLinkBLOB MUST be set to indicate that the DFS client target failback and DFS in-site referral mode are enabled for the DFS root or DFS link.
- The PKT\_ENTRY\_TYPE\_OUTSIDE\_MY\_DOM bit of the **Type** field in a DFSRootOrLinkIDBLOB of a DFSNamespaceLinkBLOB MUST be set for a DFS interlink.
- When not used as a time stamp, the **TargetTimeStamp** field of a TargetEntryBLOB MUST contain the DFS root or DFS link target priority information. The **PriorityClass** and **PriorityRank** fields in such a **TargetTimeStamp** field MUST contain the priority class and priority rank of the target respectively.



The server SHOULD do the following once it has identified the DFS root targets or DFS link targets that correspond to the DFS root or DFS link to be used for the DFS referral response.

- From the IP address of the client, determine the site of the client as specified in [MS-NRPC] section 3.5.4.3.8.
- Determine the site of each target. For a domain-based DFS namespace, the server SHOULD NOT use the SiteInformationBLOB in the DFS metadata. The site of a DFS target SHOULD instead be determined from the IP address of the DFS target as specified in [MS-NRPC] section 3.5.4.3.8. The server MUST use the host name of the target-the first component in the path - to determine the IP address of the target.<23>
- If the server supports DFS referral site costing, and site costing is enabled for the DFS namespace, determine the site cost from the client's site (3) to the target's site as specified in [MS-DRSR] section 4.1.16.<24>

If the server does not support DFS target priority as specified in [MS-DFSNM] section 2.2.2.7 or if all the targets have the default priority, the server MUST proceed as follows:

- If DFS referral site costing is disabled or not supported, sort the targets based on the site location as specified in section 3.2.1.1.
- If DFS referral site costing is enabled, sort the targets based on the site cost as specified in section 3.2.1.2.
- If the DFS\_PROPERTY\_FLAG\_INSITE\_REFERRALS flag in **NameSpaceElement.Properties** (as specified in [MS-DFSNM] section 3.1.1.3) is set for the root of DFS namespace, the root and link referrals SHOULD<25> return only targets that are in the same site as the client. If no root or link targets exist in the same site as the client, then no referral is returned and the client cannot access that portion of the namespace.
- If the DFS\_PROPERTY\_FLAG\_INSITE\_REFERRALS flag is not set in **NameSpaceElement.Properties** for the root of DFS namespace but is set for a link, then the link referrals MUST return only targets that are in the same site as the client. If no link targets exist in the same site as the client, then no referral is returned and the client cannot access the link.

A server that supports DFS referral version 4 MUST also support DFS target priority.

If the server supports DFS target priority and if at least one DFS target has a nondefault priority, the server MUST perform the following:

- At a coarse-grained level, lay out the targets into 3 groups based on the priority class. For more information on priority class, see [MS-DFSNM] section 2.2.2.7.
  - Targets in the DfsGlobalHighPriorityClass priority class. This will be referred to as group 1 for identification purposes.
  - Targets in the DfsSiteCostHighPriorityClass, DfsSiteCostNormalPriorityClass, and DfsSiteCostLowPriorityClass priority classes. This will be referred to as group 2 for identification purposes.
  - Targets in the DfsGlobalLowPriorityClass priority class. This will be referred to as group 3 for identification purposes.
- If DFS referral site costing is enabled, sort the targets within each group based on the site cost as specified in section 3.2.1.2.
- If DFS in-site referral mode is enabled for the DFS namespace, the server MUST remove all targets that are not in the same site of the client from group 2.

- Further sort targets having the same site cost in group 2 on the basis of priority class in the order of DfsSiteCostHighPriorityClass first, followed by DfsSiteCostNormalPriorityClass, and finally DfsSiteCostLowPriorityClass.
- Within each of the three groups, further sort targets that have the same site cost and priority class in order of decreasing priority rank, with 0 (0x0000) being the highest priority rank and 31 (0x001F) being the lowest priority rank. The server SHOULD create target sets that consist of targets that have the same site cost, priority class, and priority rank.
- The server SHOULD randomly reorder targets in each target set on a per-DFS referral response basis, to enable load-sharing across the targets.

Because there are three dimensions available for the sorting of targets—site cost, priority class and priority rank—additional implementation defined sorting policies MAY be used within each of the three groups previously specified. <26>

After the sorted list of targets is available, noting that the list can be empty due to DFS in-site referral mode, the server still MUST initialize the RESP\_GET\_DFS\_REFERRAL referral header as follows:

- For a DFS root referral response, the **PathConsumed** field MUST be set to the length, in bytes, of the first two path components in the referral request. For a DFS link referral response, **PathConsumed** MUST be set to the length, in bytes, of the DFS referral request path prefix that matches the DFS link. This field MUST consist of the length of the whole path components in their entirety. For example, if the referral request path is "\MyDomain\MyDfs\dir1\link1\dir2\file1" and "\MyDomain\MyDfs\dir\link1" is a DFS link, **PathConsumed** is 50 (2 bytes for each of the 25 characters).
- **NumberOfReferrals** MUST be set to the number of complete DFS referral entries that can be returned in the response buffer provided by the DFS referral request. The server MAY silently drop targets that will not fit in the buffer. However, if the buffer size is insufficient to return even one referral entry, the server MUST fail the referral request, as specified in section 3.2.5.1. <27>
- If DFS root targets are returned or if a DFS interlink is returned, the ReferralServers bit of the referral entry MUST be set to 1. In all other cases, it MUST be set to 0.
- If DFS root targets are returned or if DFS link targets are returned, the StorageServers bit of the referral entry MUST be set to 1. In all other cases, it MUST be set to 0.
- For a DFS referral version 1, the ReferralServers and StorageServers bits of the referral entry MUST be set to 1.
- For a DFS referral version 4 response, the **TargetFailback** field MUST be set to 0x0001 in a DFS root referral response if DFS client target failback is enabled for the DFS root. For link referrals, the **TargetFailback** field MUST be set to 0x0001 if DFS client target failback is enabled either for the link itself or for the DFS root. In all other cases, the **TargetFailback** field MUST be set to 0x0000.
- All other fields are reserved and SHOULD be set to 0. <28>

The server MUST add one referral entry structure for each target returned and initialize each referral entry as follows:

- The **VersionNumber** field MUST be set to the minimum of the highest DFS referral version supported by the server and the value specified in the **MaxReferralLevel** field of REQ\_GET\_DFS\_REFERRAL.
- The **Size** field MUST be set to the total size of the referral entry, in bytes. The **Size** field of a referral entry structure MUST include the size, in bytes, of all immediately following strings so that a client can find the next referral entry in the message. The **Size** field of a referral entry structure

MUST NOT include the size of referenced strings located after the last referral entry in the message.

- The **ServerType** field MUST be set to 0x0001 if root targets are returned. In all other cases, the **ServerType** field MUST be set to 0x0000.
- The **NameListReferral** field MUST be set to 0.
- For DFS referral version 4 responses, the TargetSetBoundary bit MUST be set to 1 for each target that is the first target in a target set, and MUST be set to 0 for all other targets.
- The **TimeToLive** field MUST be set to the time-out value associated with the DFS root or DFS link. When there is more than one referral entry, the **TimeToLive** field of each referral entry MUST be the same.
- For a DFS root referral response:
  - The **DFSPathOffset** field MUST be set to the offset, in bytes, from the beginning of the referral entry to a string that contains the first two path components of the DFS referral request path.
- For a link referral response:
  - The **DFSPathOffset** field MUST be set to the offset, in bytes, from the beginning of the referral entry to a string that contains the DFS referral request path prefix that matches a DFS link.
  - The **DFSAlternatePathOffset** field MUST be set as specified in section 2.2.5.3.1. This path MAY either be the same as the path as pointed to by the **DFSPathOffset** field or be an 8.3 name. In the former case, the string referenced MAY be the same as that in **DFSPathOffset** or a duplicate copy. <29>
- The **NetworkAddressOffset** field MUST be set to the offset, in bytes, from the beginning of the referral entry to a string that contains the DFS target for the entry.
- All other fields are reserved and MUST be set to 0.

Servers SHOULD<30> return fully qualified DNS host names of targets in responses to root referral requests and link referral requests.

### 3.2.6 Timer Events

None.

### 3.2.7 Other Local Events

None.

## 3.3 Domain Controller Details

This section specifies how a DFS server on a DC processes and responds to DFS referral requests from DFS clients. It is applicable only to DFS servers running on DCs.<31>

A DFS server on a DC MUST respond to domain, DC, sysvol, root, and link-referral requests.

If that DFS server is also hosting DFS root targets, then in addition to the requirements in this section, it MUST also conform to the requirements in section 3.2 while processing referral requests for those DFS root targets.

### 3.3.1 Abstract Data Model

This section describes a conceptual model of possible data organization that an implementation maintains to participate in this protocol. The organization is provided to explain how the protocol behaves. This document does not mandate that implementations adhere to this model as long as their external behavior is consistent with that described in this document. The following state MUST be maintained at the DFS server running on a DC:

**SelfFirst:** Indicates whether or not this DC returns itself as the first target in DC and sysvol referrals made to it. The default is false (the DC does not return itself as the first target).

### 3.3.2 Timers

None.

### 3.3.3 Initialization

**SelfFirst** MUST be initialized with the setting on the domain controller (DC) that indicates whether it returns itself as the first target in DC and sysvol referrals made to it.<32>

### 3.3.4 Higher-Layer Triggered Events

Servers receive and act upon DFS referral requests. No other higher-layer triggered events are used.

### 3.3.5 Message Processing Events and Sequencing Rules

#### 3.3.5.1 Receiving a DFS Referral Request

For more information about DFS referral requests, see section 3.2.5.1. The processing of individual referral requests is explained in the following sections.

#### 3.3.5.2 Receiving a Domain Referral Request

The server MUST return a list of domains, for the forest in which the DC exists, in both NetBIOS and fully qualified domain name forms. It SHOULD include the domains in other forests, which are part of a trust relationship with the DFS client's forest.<33>

To process a domain referral, the client MUST support DFS referral version 3 or DFS referral version 4. If the requested DFS referral version is less than 3, the server SHOULD fail the referral with the STATUS\_UNSUCCESSFUL (0xC0000001) return code.<34>

Because there is no difference between DFS referral versions 3 and 4 for a domain referral response, a server that supports DFS referral version 4 MUST return a DFS referral version 3 response even if the DFS client specified DFS referral version 4.

When the number of domains is more than can fit in the response buffer and the response buffer is less than 56 KB, the following sequence of messages MUST occur:

- The server fails the referral request with STATUS\_BUFFER\_OVERFLOW (0x80000005).
- The client retries by doubling the buffer size up to a maximum of 56 KB.

Otherwise the server fills the response buffer as follows:

- MUST return both the NetBIOS and fully qualified names of a domain or return no entry for the domain.

- MUST include the NetBIOS and fully qualified name of the local domain to which it is joined. This ensures that a client in the same domain as the server will always be able to access SYSVOL and NETLOGON paths correctly. SHOULD include all other domains.<35>
- MUST return only complete names and not truncate a name to fit in the response buffer.
- MUST return the data equal to the requested buffer size or 56 KB of data, whichever is less.
- Entries in the referral response can be in random order.

The server MUST initialize the RESP\_GET\_DFS\_REFERRAL referral header for the response as follows:

- **PathConsumed** MUST be set to 0.
- **NumberOfReferrals** MUST be set to the number of complete referral entries that can fit in the response buffer provided by the DFS referral request. The server MAY discard excess referral response entries and MAY return a STATUS\_BUFFER\_OVERFLOW (0x80000005) error if the response buffer is too small.
- The **ReferralServers** and **StorageServers** fields are set to 0.

The server MUST add one referral entry structure for each of the NetBIOS and fully qualified domain names returned and initialize each referral entry as follows:

- The **VersionNumber** field MUST be set to 0x0003.
- The **Size** field MUST be set to the total size of the referral entry in bytes, including any padding at the end of the structure. The **Size** field of a referral entry structure MUST include the size, in bytes, of all immediately following strings so that a client can find the next referral entry in the message. The **Size** field of a referral entry structure MUST NOT include the size of referenced strings located after the last referral entry in the message.
- The **NameListReferral** bit of the **ReferralEntryFlags** field MUST be set to 1.
- The **TimeToLive** field MAY be set to a non-zero cache time-out value in seconds.<36> When there is more than one referral entry, the **TimeToLive** field of each referral entry MUST be the same.
- The **SpecialNameOffset** field MUST be set to the offset in bytes from the beginning of the referral entry to the string that contains the domain name for the entry. The domain name MUST be a null-terminated string of the form "\<domain>", where <domain> MUST be the domain name that corresponds to the referral entry.
- The **ExpandedNameOffset** field MUST be set to 0.
- All other fields SHOULD be set to 0.

### 3.3.5.3 Receiving a DC Referral Request

The domain name in the referral request MUST be either a domain in the current forest or a domain in a trusted forest. The server MUST fail DC referral requests for other domain names with a STATUS\_INVALID\_PARAMETER (0xC000000D) return code.

DC referrals require that the DFS referral version be 3 or higher, as specified in section 3.1.4.2. If the requested DFS referral version is less than 3, the server SHOULD<37> fail the referral request with the STATUS\_UNSUCCESSFUL (0xC0000001) return code.

Because there is no difference between DFS referral versions 3 and 4 for a DC referral response, a server that supports DFS referral version 4 MUST return a DFS referral version 3 response even if the DFS client specified DFS referral version 4.

For a valid domain name, the server MUST return as many complete DC names as can fit in the response buffer. The format of the DC names returned MUST correspond to the format of the domain name in the referral request.

- If the request contains a fully qualified domain name, the response MUST contain a fully qualified DC host name.
- If the request contains a NetBIOS domain name, the response MUST contain a NetBIOS DC host name.

The server MUST initialize the RESP\_GET\_DFS\_REFERRAL referral header for the response as follows:

- The **PathConsumed** field MUST be set to 0.
- The **NumberOfReferrals** field MUST be set to 1, independent of the number of DC names returned.
- The ReferralServers and StorageServers bits MUST be set to 0.

The server MUST place exactly one referral entry structure in the referral response. The server MUST initialize this referral entry as follows:

- The **VersionNumber** field MUST be set to 0x0003.
- The **Size** field MUST be set to the total size of the referral entry in bytes, including any padding at the end of the structure. The **Size** field of a referral entry structure MUST NOT include the size of referenced strings located after the referral entry in the message.
- The **NameListReferral** bit of the **ReferralEntryFlags** field MUST be set to 1.
- The **TimeToLive** field MAY be set to a nonzero cache time-out value in seconds.<38> When there is more than one referral entry, the **TimeToLive** field of each referral entry MUST be the same.
- The **SpecialNameOffset** field MUST be set to the offset in bytes from the beginning of the referral entry to the string that contains the domain name for the referral response. The domain name MUST be a null-terminated string of the form "\\<domain>", where <domain> MUST be the domain name specified in the DC referral request.
- The **NumberOfExpandedNames** field MUST be set to the number of DCs returned.
- The **ExpandedNameOffset** field MUST be set to the offset in bytes from the beginning of the referral entry to the first null-terminated DC Unicode string. If multiple DC name strings are being returned in response to a DC referral request, each DC name immediately follows its null-terminated predecessor without any padding and MUST be prefixed with a backslash character ("\"). The total number of consecutive name strings MUST be equal to the value of the NumberOfExpandedNames field.
- All other fields SHOULD be set to 0.

The server MUST sort the targets as follows:

- If Distributed File System (DFS) referral site costing is disabled or not supported, sort the targets based on the site location, as specified in section 3.2.1.1.
- If DFS referral site costing is enabled, sort the targets based on the site cost, as specified in section 3.2.1.2.<39>

If **SelfFirst** is enabled, the server MUST place itself at the top of the DC referral response.

### 3.3.5.4 Receiving a sysvol Referral Request

The domain name in the referral request MUST be either a domain in the current forest or a domain in another trusted forest. The DFS server MUST fail sysvol referral requests with other domain names with a STATUS\_NOT\_FOUND (0xC0000225) return code.

The DFS server MUST determine the list of DCs for the domain name specified in the sysvol referral request from directory services and then generate a list of DCs to return in the referral response that MUST be in either of the following forms, where <dcname> is a DC in the domain specified in the first path component of the referral request:

- "\\<dcname>\SYSVOL" if the second component of referral request path is "SYSVOL".
- "\\<dcname>\NETLOGON" if the second component of referral request path is "NETLOGON".

The format of the <dcname> returned MUST correspond to the format of the domain name in the referral request.

- If the request contains a fully qualified domain name, the response MUST contain fully qualified DC host names.
- If the request contains a NetBIOS domain name, the response MUST contain NetBIOS DC host names.

A server MUST fail referral requests with more than two path components with a STATUS\_NOT\_FOUND (0xC0000225) return code.

Servers MAY support DFS referral site costing for sysvol referral requests.<40>

After the candidate list of targets is available, the server SHOULD do the following:

- From the IP address of the client, determine the site of the client, as specified in [MS-NRPC], section 3.5.4.3.8.
- From the first path component of a target (the host name), determine its site via its IP address, as specified in [MS-NRPC] section 3.5.4.3.8.
- If the server supports DFS referral site costing, and site costing is enabled for the DFS namespace, determine the site cost from the client's site to the target's site as specified in [MS-DRSR] section 4.1.16 <41>

The server MUST sort the targets as follows:

- If DFS referral site costing is disabled or not supported, sort the targets based on the site location as specified in section 3.2.1.1.
- If DFS referral site costing is enabled<42>, sort the targets based on the site cost as specified in section 3.2.1.2.

If **SelfFirst** is enabled, the server MUST place itself at the top of the sysvol referral response.

The server MUST initialize the RESP\_GET\_DFS\_REFERRAL referral header as follows for the response.

- The **PathConsumed** field MUST be set to length in bytes of the DFS referral request path.
- The **NumberOfReferrals** field MUST be set to the number of complete DFS referral entries that can be returned in the response buffer provided by the DFS referral request. The server MAY silently drop targets that will not fit in the buffer. However, if the buffer size is insufficient to return even one referral entry, the server MUST fail the request with STATUS\_BUFFER\_OVERFLOW (0x80000005).

- If the **MaxReferralLevel** field in the request is 1, the **ReferralServers** and **StorageServers** fields MUST be set to 1. Otherwise, the **ReferralServers** field MUST be set to 0 and the **StorageServers** field MUST be set to 1.
- For DFS referral version 3 responses, the **TargetFallback** field MUST be set to 0. For DFS referral version 4 responses, the **TargetFallback** field MAY be set to 1.<43>
- All other fields SHOULD be set to 0.

The server MUST add one referral entry structure for each target returned. The server MUST initialize each referral entry as follows:

- The **VersionNumber** field MUST be set to the minimum of the highest DFS referral version supported by the server and the value specified in the **MaxReferralLevel** field of REQ\_GET\_DFS\_REFERRAL.
- The **Size** field MUST be set to the total size of the referral entry in bytes. The **Size** field of a referral entry structure MUST include the size, in bytes, of all immediately following strings so that a client can find the next referral entry in the message. The **Size** field of a referral entry structure MUST NOT include the size of referenced strings located after the last referral entry in the message.
- The **NameListReferral** field MUST be set to 0.
- For a version 4 DFS referral response, the **TargetSetBoundary** MUST be set to 1 if the target is the first target of a target set, and MUST be set to 0 if the target is other than the first target of a target set.
- The **TimeToLive** field SHOULD be set to a nonzero time-out value in seconds.<44> When there is more than one referral entry, the **TimeToLive** field of each referral entry MUST be the same.
- The **DFSPathOffset** field MUST be set to the offset in bytes from the beginning of the referral entry to the string that contains the DFS referral request path.
- The **DFSAlternatePathOffset** field MUST be set to the offset in bytes from the beginning of the referral entry to the string that contains the DFS referral request path. This path MAY either be the same as the path as pointed to by the **DFSPathOffset** field or be an 8.3 name. In the former case, the string that is referenced MAY be the same as that in the **DFSPathOffset** field or a duplicate copy.<45>.
- The **NetworkAddressOffset** field MUST be set to the offset in bytes from the beginning of the referral entry to the string that contains the target.
- All other fields MUST be set to 0.

### 3.3.5.5 Receiving a Root Referral Request or Link Referral Request

Root referral requests and link referral requests MUST be handled as specified in section 3.2.5.5, with the following exception: a DC MUST process root referral requests and link referral requests for domain-based DFS namespaces in the domain for which it is a DC. The name of the DFS namespace in the second component of the DFS root referral request path MUST be validated against the domain-based DFS namespaces in the domain of the DC and if the namespace does not exist, the DFS server SHOULD fail the root referral request with a STATUS\_NO\_SUCH\_FILE (0xC000000F) return code.<46> This MUST be done by searching the name attribute in the objects under the DFS configuration container of the directory service. A DC MUST fail the link referral request with STATUS\_NOT\_FOUND, if it's not the DFS root target for the DFS namespace specified in the link referral request.



### **3.3.6 Timer Events**

None.

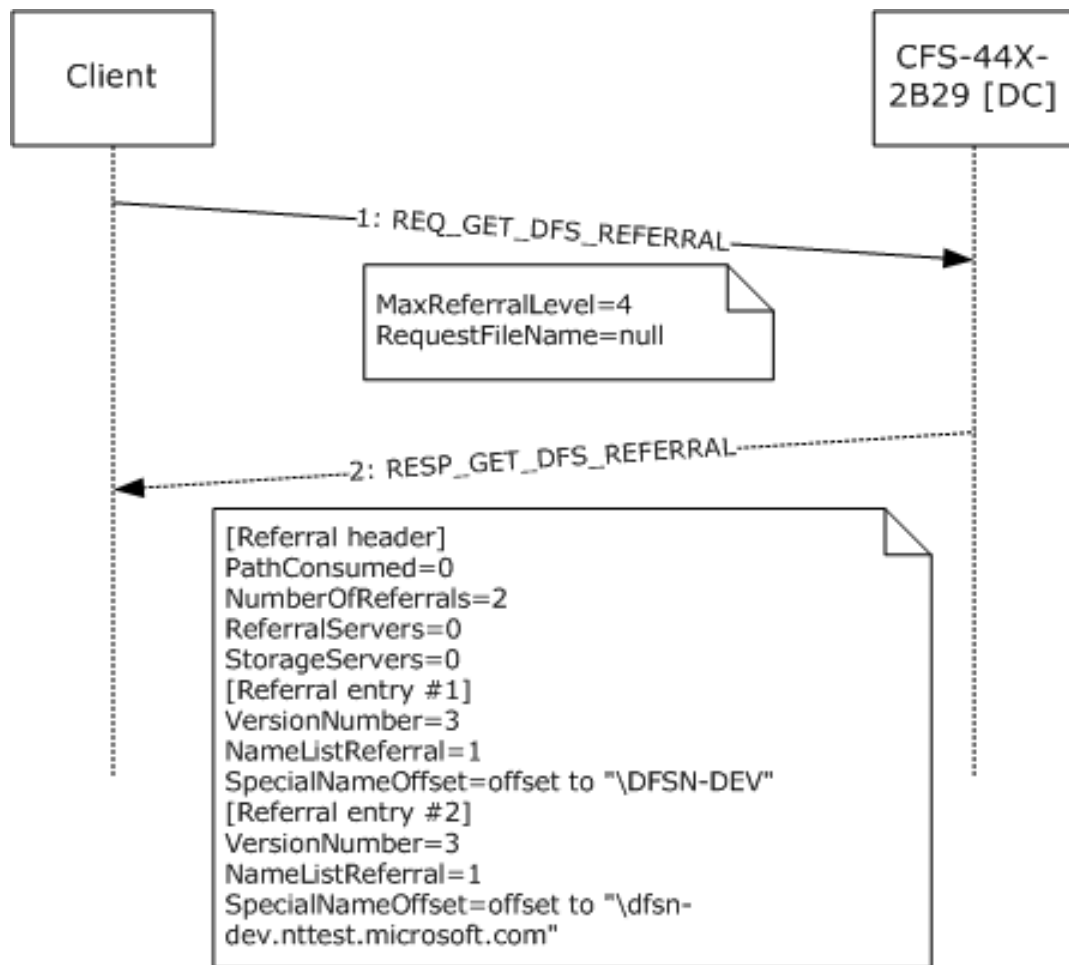
### **3.3.7 Other Local Events**

None.

## 4 Protocol Examples

### 4.1 Domain Referral

The following sequence diagram shows a domain referral.

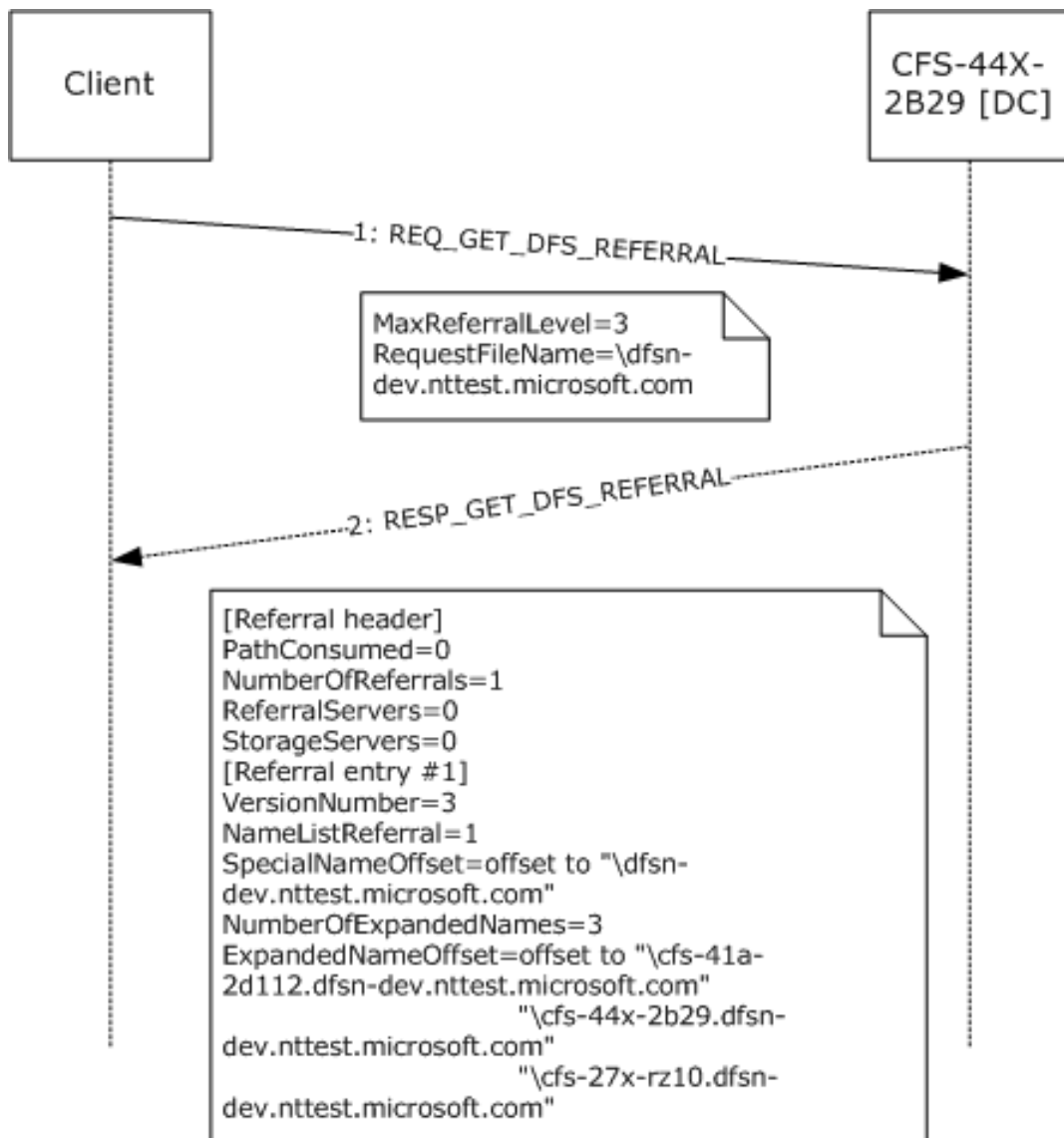


**Figure 15: Domain referral sequence**

1. The client sends a REQ\_GET\_DFS\_REFERRAL (section 2.2.2) to CFS-44X-2B29, a DC in the DFSN-DEV.NTTEST.MICROSOFT.COM domain. The highest DFS referral version understood by the client is 4, as indicated by the **MaxReferralLevel** field of REQ\_GET\_DFS\_REFERRAL. The DFS path specified in the DFS referral request is a 0-length string, indicating a domain referral. To illustrate the effect of a client specifying a referral version that is later than what the server supports, the client's referral version is shown as 4 in this example.
2. The DC's response has two referral entries, PathConsumed is 0, ReferralServers and StorageServers bits are set to 0. Each referral entry has the **VersionNumber** field set to 3. While the client's referral version in the request was 4, the server has replied with version 3. The NameListReferral bit is set to 1 in each referral entry. The strings pointed to by the **SpecialNameOffset** field of the individual referral entries are domain names.

## 4.2 DC Referral

The following sequence diagram shows a DC referral.



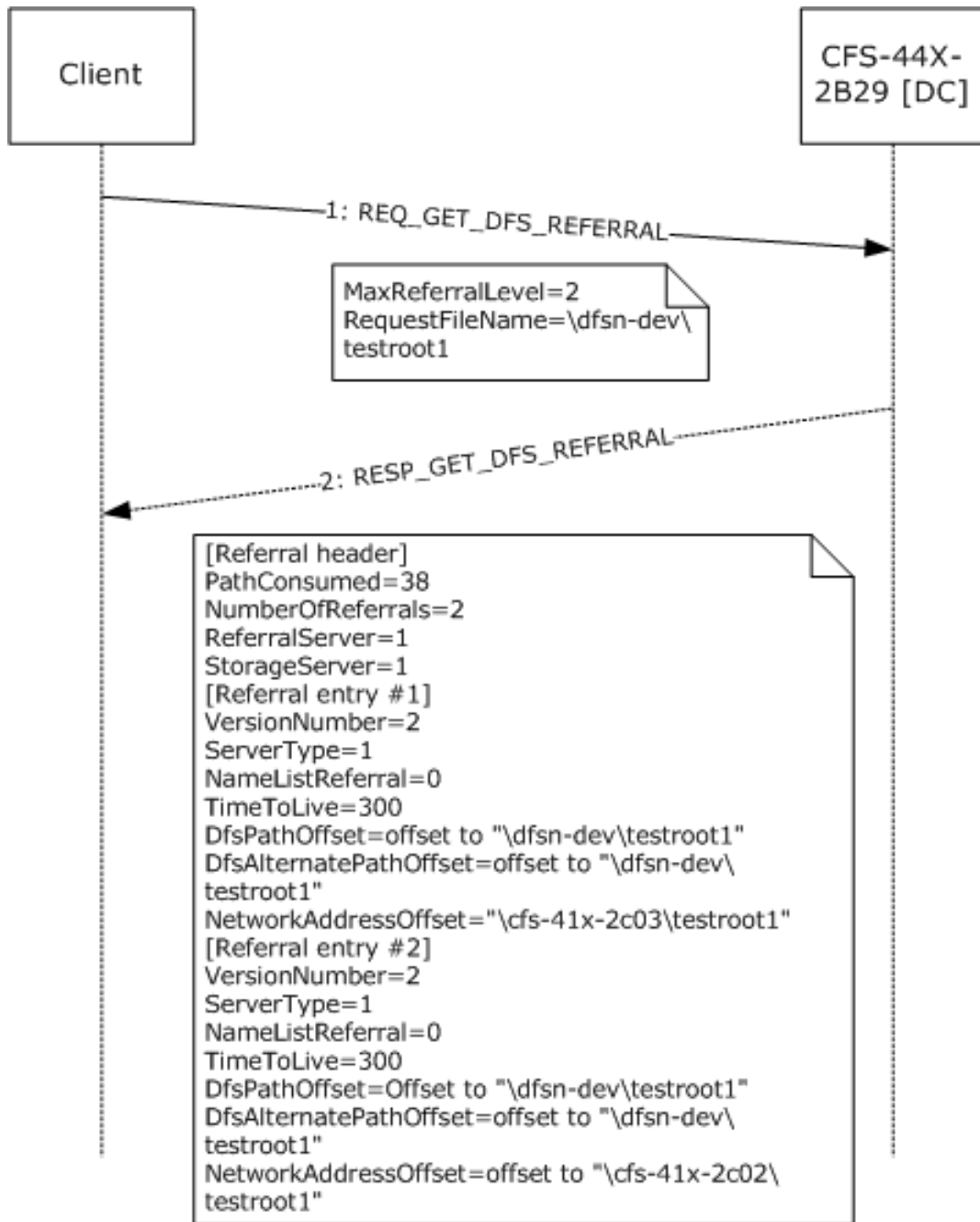
**Figure 16: Domain controller referral**

1. The client sends a REQ\_GET\_DFS\_REFERRAL (section 2.2.2) to CFS-44X-2B29, a DC in the DFSN-DEV domain. The highest DFS referral version understood by the client is 3, as indicated by the **MaxReferralLevel** field of REQ\_GET\_DFS\_REFERRAL. The DFS path specified in the DFS referral request is the string \\dfs-dev.nttest.microsoft.com, indicating a DC referral.
2. The DC's response has one referral entry, PathConsumed is 0, ReferralServers and StorageServers bits are set to 0. The referral entry has the **VersionNumber** field set to 3. The NameListReferral bit is set to 1 in the referral entry. The string pointed to by the **SpecialNameOffset** field of the referral entry is the domain name for which the DC list returned. The **NumberOfExpandedNames** field is set to 3, indicating that there are three DCs in the DC list returned. The **ExpandedNameOffset** field in the referral entry points to a sequence of three

strings, each of which is a DC name. The DC names returned are in fully qualified domain name format, because the domain name in the request is also in the fully qualified domain name format.

### 4.3 Domain-Based DFS Root Referral

The following sequence diagram shows a root referral for a domain-based DFS namespace.



**Figure 17: Domain-based DFS root referral**

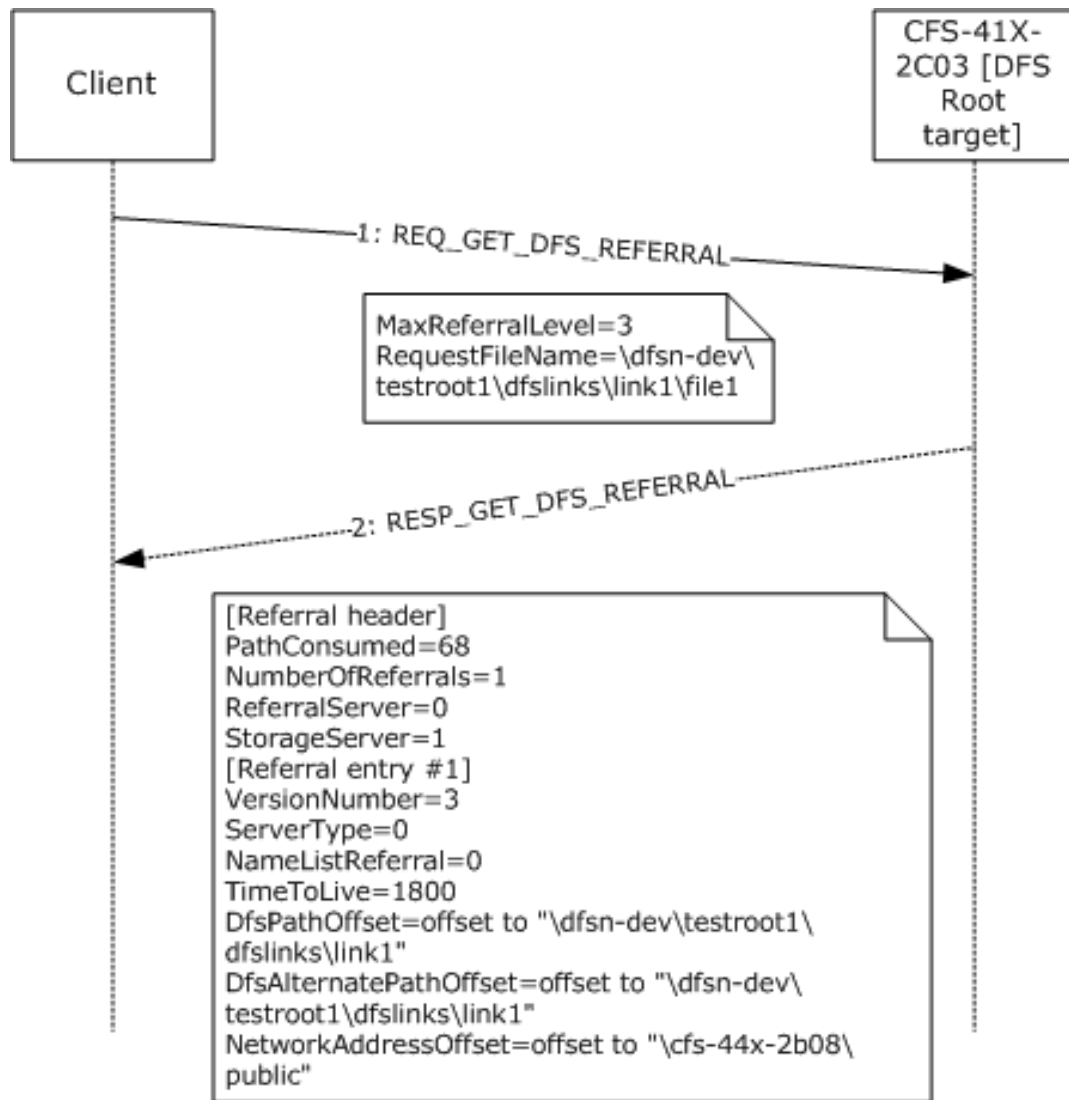
1. The client sends a REQ\_GET\_DFS\_REFERRAL (section 2.2.2) to CFS-44X-2B29, a DC in the DFSN-DEV domain. The highest DFS referral version understood by the client is 2, as indicated by the

**MaxReferralLevel** field of REQ\_GET\_DFS\_REFERRAL. The DFS path specified in the DFS referral request is \dfsn-dev\testroot1, a domain-based DFS namespace in the DFSN-DEV domain.

- The DC's referral response contains two referral entries, each having referral version 2. The ReferralServers and StorageServers bits are set to 1 and the **ServerType** field is set to 1 in the response since DFS root targets are returned. The strings pointed to by the **NetworkAddressOffset** field of the individual referral entries are the DFS root targets for the domain-based DFS namespace.

#### 4.4 Domain-Based DFS Link Referral

The following sequence diagram shows a DFS link referral for a domain-based DFS namespace.



**Figure 18: Domain-based DFS link referral**

- The client sends a REQ\_GET\_DFS\_REFERRAL (section 2.2.2) to CFS-41X-2C03, a DFS root target for the domain-based DFS namespace \\dfsn-dev\testroot1 in the DFSN-DEV domain. The highest DFS referral version understood by the client is 3, as indicated by the **MaxReferralLevel** field of

REQ\_GET\_DFS\_REFERRAL. The DFS path specified in the DFS referral request is \dfs-dev\testroot1\dfslinks\link1\file1, a path to a file in the DFS namespace.

2. The DFS root target's referral response contains one referral entry having referral version 3. The ReferralServers bit is set to 0 and StorageServers bit is set to 1 indicating that the target is not another DFS root. The **ServerType** field is set to 0 in the response because a DFS link target is returned. The string pointed to by the **NetworkAddressOffset** field of the referral entry is the DFS link target.

#### 4.5 Domain-Based DFS Root Referral Packet Trace

The following figure shows the network packet trace of a domain-based DFS root referral request. The REQ\_DFS\_GET\_REFERRAL structure is at offset 0x7E in the hexadecimal dump shown.

**MaxReferralLevel** field is at offset 0x7E (=3) and **RequestFileName** is at offset 0x80 (=\\dfs-dev\testroot1).

```

ETHERNET: EType - Internet IP (IPv4)
IP: Protocol = TCP - Transmission control; Packet ID - 48186; Total IP
Length = 154; Options = NO Options
TCP: Control Bits: .AP..., len: 114, seq:1634334697-1634334811,
ack:2251252280, win:64498, src: 2086 dst: 139 (NBT Session)
NBT: SS: Session Message, Len: 110
SMB: C transact2 NT Get DFS Referral
    SMB: Command = C transact2
        SMB: Word count = 15
        SMB: Total param count = 42
        SMB: Total data count = 0
        SMB: Max param count = 0
        SMB: Max data count = 4096
        SMB: Max setup words = 0 (0x0)
        SMB: Transact Flags Summary = 0 (0x0)
            SMB:.....0 = Leave session intact
            SMB:.....0. = Response required
        SMB: Transact timeout = 0 (0x0)
        SMB: Parameter count = 42 (0x2A)
        SMB: Parameter offset = 68 (0x44)
        SMB: Data count = 0 (0x0)
        SMB: Data offset = 0 (0x0)
        SMB: Setup count = 1
        SMB: Setup words
        SMB: Transact2 function = TRANS2_DFS_GET_REFERRAL
        SMB: Byte count = 45
        SMB: Parameter bytes
        SMB: Transaction parameters
            SMB: DFS Max Referral Level = 3 (0x3)
            SMB: DFS Request Filename = \dfs-dev\testroot1
00000: 00 D0 04 3C D8 00 00 B0 D0 C2 01 3C 08 00 45 00
00010: 00 9A BC 3A 40 00 80 06 76 EF 9D 3B FD 44 0A C1
00020: 21 F3 08 26 00 8B 61 69 F7 E9 86 2F 62 38 50 18
00030: FB F2 C7 C0 00 00 00 00 00 6E FF 53 4D 42 32 00
00040: 00 00 00 18 07 C8 00 00 00 00 00 00 00 00 00
00050: 00 00 02 20 B8 0B 00 38 40 01 0F 2A 00 00 00
00060: 00 00 10 00 00 00 00 00 00 00 00 00 00 2A 00 44
00070: 00 00 00 00 00 01 00 10 00 2D 00 00 00 00 03 00
00080: 5C 00 64 00 66 00 73 00 6E 00 2D 00 64 00 65 00
00090: 76 00 5C 00 74 00 65 00 73 00 74 00 72 00 6F 00
000A0: 6F 00 74 00 31 00 00

```

**Figure 19: REQ\_DFS\_GET\_REFERRAL packet trace**

The following figure shows the network packet dump of a domain-based DFS root referral response. The referral response consists of the DFS referral header, RESP\_GET\_DFS\_REFERRAL at offset 0x72 in the hexadecimal dump. The **PathConsumed** field is at offset 0x72 (=0x26) and the **NumberOfReferrals** field is at offset 0x74 (=2). The first referral entry, of type DFS\_REFERRAL\_V3, starts at 0x7A and the second referral entry, also of type DFS\_REFERRAL\_V3, starts at offset 0x9C. The referral header and the first referral entry have been marked in the hexadecimal dump for identification purposes. The hexadecimal dump shows that the two referral entries immediately follow one another and all the strings referenced in the referral entries are at the end of all the referral entries, starting at offset 0xBE in the hexadecimal dump.

The **NetworkAddressOffset** field of the first referral entry, containing the offset of the DFS root target from the start of the referral entry, is at offset 0x8A. It contains 0x94. The first referral entry is at offset 0x7A. Hence, the DFS root target that corresponds to the first referral entry is at offset 0x7A+0x94=0x10E. The null-terminated Unicode string at offset 0x10E in the hexadecimal dump is \cfs-41x-2c03\testroot1, one of the DFS root targets of the domain-based DFS namespace \\dfs-dev\testroot1.

```

ETHERNET: EType - Internet IP (IPv4)
IP: Protocol - TCP - Transmission control; Packet ID = 12850; Total IP Length - 352; Options = NO Options
TCP: control Bits: .AP..., len: 312, seq:2251252280-2251252592, ack:1634334811, win:64482,
src: 139 (NBT session) dst: 2086
NBT: SS: Session Message, Len: 308
SMB: R transact2 NT Get DFS Referral (response to frame 48)
  SMB: Command = C transact2
    SMB: Word count = 10
    SMB: Total parm count = 0
    SMB: Total data count = 252
    SMB: Parameter count = 0 (0x0)
    SMB: Parameter offset = 56 (0x38)
    SMB: Parameter Displacement = 0 (0x0)
    SMB: Data count = 252 (0xFC)
    SMB: Data offset = 56 (0x38)
    SMB: Data Displacement = (0x0)
    SMB: Setup count = 0
    SMB: Byte Count = 253
    SMB: Byte parameters
    SMB: Transaction data
      SMB: DFS Path consumed = 38 (0x26)
      SMB: DFS Number of Referrals = 2 (0x2)
      SMB: DFS Server Function = 3 (0x3)
        SMB: .....1 = Referral Server
        SMB: .....1. = Storage Server
      SMB: DFS version 3 Referral
        SMB: DFS Version Number = 3 (0x3)
        SMB: DFS Server Type = DFS root target
        SMB: DFS TimeToLive = 300 (0x12C)
        SMB: DFS Filename = \dfs-dev\testroot1
        SMB: DFS 8.3 Filename = \dfs-dev\testroot1
        SMB: DFS Sharename = \cfs-41x-2c03\testroot1
      SMB: DFS Servicesire GUID = 00 00 00 00 00 00 00 00 00 00 00 00 00 00 00 00
      SMB: DFS version 3 Referral
        SMB: DFS Version Number = 3 (0x3)
        SMB: DFS Server Type = DFS root target
        SMB: DFS TimeToLive = 300 (0x12C)
        SMB: DFS Filename = \dfs-dev\testroot1
        SMB: DFS 8.3 Filename = \dfs-d\testroot1
        SMB: DFS Sharename = \cfs-41x-2c02\testroot1
      SMB: DFS Servicesite GUID = 00 00 00 00 00 00 00 00 00 00 00 00 00 00 00 00
00000: 00 B0 D0 C2 01 3C 00 D0 04 3C 08 00 08 00 45 00
00010: 01 60 32 32 40 00 7E 06 02 32 0A C1 21 F3 9D 3B
00020: FD 44 00 88 08 26 86 2F 62 38 61 69 F8 5B 50 18
00030: FB E2 38 87 00 00 00 01 34 FF 53 4D 42 32 00
00040: 00 00 00 98 07 C8 00 00 00 00 00 00 00 00 00
00050: 00 00 02 20 B8 0B 00 38 40 01 0A 00 00 FC 00 00
00060: 00 00 00 38 00 00 00 FC 00 38 00 00 00 00 00 FD
00070: 00 00 26 00 02 00 03 00 00 00 03 00 22 00 01 00
00080: 00 00 2C 01 00 00 44 00 6C 00 94 00 00 00 00 00
00090: 00 00 00 00 00 00 00 00 00 00 00 00 03 00 22 00
000A0: 01 00 00 00 2C 01 00 00 22 00 4A 00 02 00 00 00
000B0: 00 00 00 00 00 00 00 00 00 00 00 00 00 00 5C 00
000C0: 64 00 66 00 73 00 6E 00 2D 00 64 00 65 00 76 00
000D0: 5C 00 74 00 65 00 73 00 74 00 72 00 6F 00 6F 00
000E0: 74 00 31 00 00 00 5C 00 64 00 66 00 73 00 6E 00
000F0: 2D 00 64 00 65 00 76 00 5C 00 74 00 65 00 73 00
00100: 74 00 72 00 6F 00 6F 00 74 00 31 00 00 00 5C 00
00110: 63 00 66 00 73 00 2D 00 34 00 31 00 78 00 2D 00
00120: 32 00 63 00 30 00 33 00 5C 00 74 00 65 00 73 00
00130: 74 00 72 00 6F 00 6F 00 74 00 31 00 00 00 5C 00
00140: 63 00 66 00 73 00 2D 00 34 00 31 00 78 00 2D 00
00150: 32 00 63 00 30 00 32 00 5C 00 74 00 65 00 73 00
00160: 74 00 72 00 6F 00 6F 00 74 00 31 00 00 00

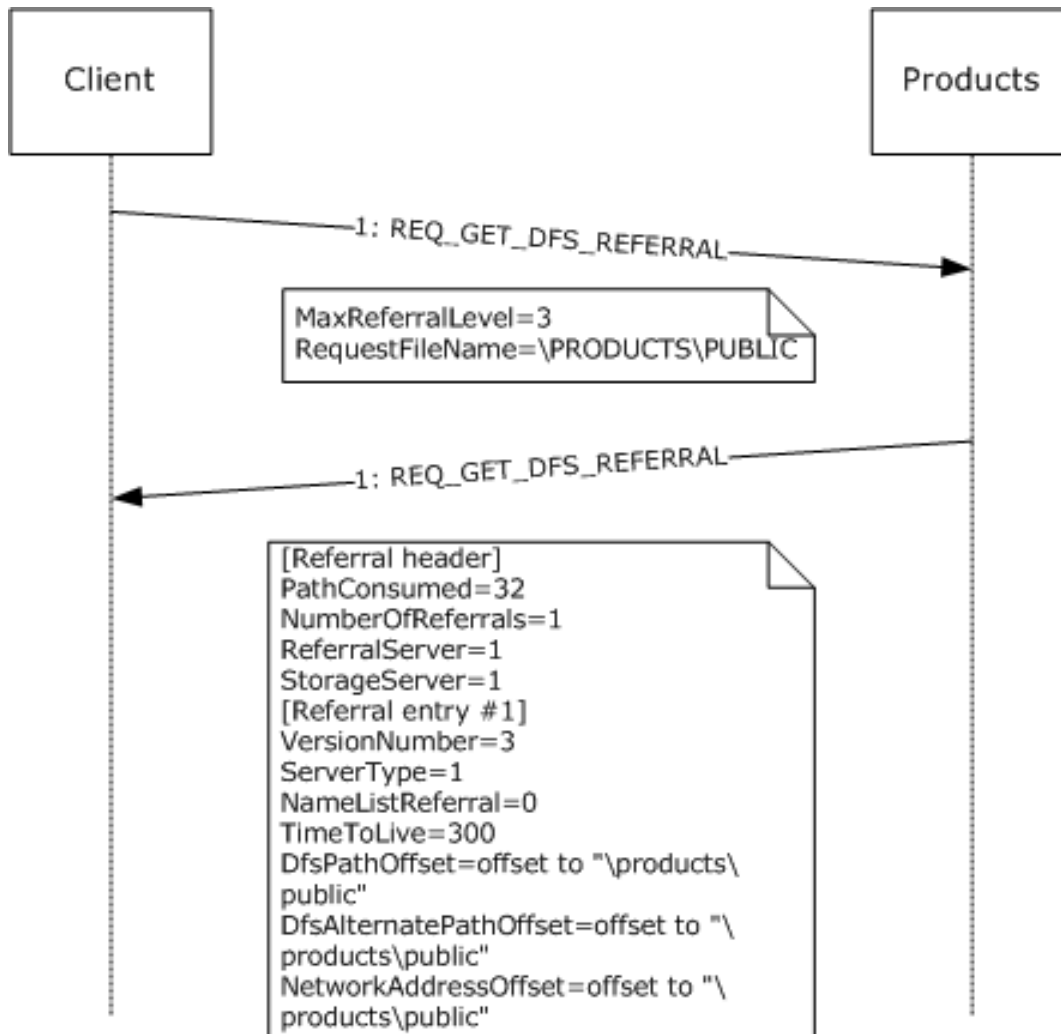
```

**Figure 20: RESP\_GET\_DFS\_REFERRAL packet trace**



## 4.6 Standalone DFS Root Referral

The following sequence diagram shows a root referral for a stand-alone DFS namespace.



**Figure 21: DFS root referral between client and server**

The client sends a REQ\_GET\_DFS\_REFERRAL to PRODUCTS. The latest DFS referral version understood by the client is 3, as indicated by the **MaxReferralLevel** field of REQ\_GET\_DFS\_REFERRAL. The DFS path specified in the DFS referral request is \PRODUCTS\PUBLIC, a stand-alone DFS namespace.

The referral response contains one referral entry having a referral version 3. The ReferralServers and StorageServers bits are set to 1, and the **ServerType** field is set to 1 in the response since DFS root targets are returned. The strings pointed to by the **NetworkAddressOffset** field of the referral entry is the DFS root target for the stand-alone DFS namespace.

## **5 Security**

### **5.1 Security Considerations for Implementers**

None.

### **5.2 Index of Security Parameters**

None.

## 6 (Updated Section) Appendix A: Product Behavior

The information in this specification is applicable to the following Microsoft products or supplemental software. References to product versions include updates to those products.

- Windows NT Workstation 4.0 operating system
- Windows NT Server 4.0 operating system
- Windows 98 operating system
- Windows 2000 operating system
- Windows Millennium Edition operating system
- Windows XP operating system
- Windows Server 2003 operating system
- Windows Vista operating system
- Windows Server 2008 operating system
- Windows 7 operating system
- Windows Server 2008 R2 operating system
- Windows 8 operating system
- Windows Server 2012 operating system
- Windows 8.1 operating system
- Windows Server 2012 R2 operating system
- Windows 10 operating system
- Windows Server 2016 operating system
- Windows Server operating system
- Windows Server 2019 operating system
- Windows Server 2022 operating system
- Windows 11 operating system

### ▪ Windows Server 2025 operating system

Exceptions, if any, are noted in this section. If an update version, service pack or Knowledge Base (KB) number appears with a product name, the behavior changed in that update. The new behavior also applies to subsequent updates unless otherwise specified. If a product edition appears with the product version, behavior is different in that product edition.

Unless otherwise specified, any statement of optional behavior in this specification that is prescribed using the terms "SHOULD" or "SHOULD NOT" implies product behavior in accordance with the SHOULD or SHOULD NOT prescription. Unless otherwise specified, the term "MAY" implies that the product does not follow the prescription.

<1> Section 1.8: Windows uses only the values specified in [MS-ERREF].

<2> Section 2.2.4: Windows NT Server 4.0, Windows 2000, and Windows Server 2003 insert a variable number of padding bytes.

<3> Section 2.2.5.3.2: Windows 2000 Server operating system and Windows Server 2003 will add 16 bytes of padding after DFS\_REFERRAL\_V3 structures in all namelist referral responses. Windows Server 2008 and Windows Server 2008 R2 will add 16 bytes of padding for DFS\_REFERRAL\_V3 structures in DC referral responses.

<4> Section 3.1.1: The default **TimeToLive** value for root referrals is 300 seconds and the default **TimeToLive** value for link referrals is 1,800 seconds.

<5> Section 3.1.3: Windows clients (Windows 2000 operating system and later, Windows XP operating system and later) use 15 minutes as the default BootstrapDCTimer period. The interval is configurable in Windows by the HKEY\_LOCAL\_MACHINE\Software\Policies\Microsoft\System\DFSCClient\DfsDcNameDelay registry setting.

<6> Section 3.1.4.1: The Windows client returns STATUS\_MORE\_PROCESSING\_REQUIRED to the calling application to indicate that the path does not correspond to a DFS Namespace or a SYSVOL/NETLOGON share, and that the I/O operation is not complete.

<7> Section 3.1.4.2: Windows 8 operating system and later, Windows Server 2012 operating system and later verify the value of UseDcLocatorSiteName under the following registry key. If the value is 1, the test returns TRUE; otherwise, it returns FALSE:

HKLM\SYSTEM\CurrentControlSet\Services\DfsC\Parameters

All other versions of Windows always return FALSE for this test.

<8> Section 3.1.4.2: Windows 8 and later clients obtain the site name from the SiteName registry value under the following registry key:

HKLM\SYSTEM\CurrentControlSet\Services\Netlogon\Parameters

<9> Section 3.1.5.1: Except for Windows Millennium Edition, DFS link referral requests to the DFS root target server are issued by all Windows operating systems. Windows 98 DFS clients issue DFS link referral requests to DCs when accessing a domain-based DFS namespace.

<10> Section 3.1.5.2: If an I/O operation to a target fails with one of the following error codes, as specified per version of Windows, the client proceeds to the next target. Unless otherwise noted, the code is used in Windows NT 4.0 operating system Service Pack 2 (SP2), Windows 2000 operating system and later, Windows XP operating system and later.

Status Code	Support Notes
STATUS_BAD_NETWORK_NAME	
STATUS_BAD_NETWORK_PATH	
STATUS_CONNECTION_DISCONNECTED	Not used in Windows NT 4.0 SP2.
STATUS_CONNECTION_REFUSED	Used in Windows Vista operating system and later, Windows Server 2008 operating system and later.
STATUS_CONNECTION_RESET	Used in Windows 7 operating system and later, Windows Server 2008 R2 operating system and later.
STATUS_DEVICE_OFF_LINE	
STATUS_DFS_UNAVAILABLE	Not used in Windows NT 4.0 SP2.

Status Code	Support Notes
STATUS_DISK_OPERATION_FAILED	
STATUS_DUPLICATE_NAME	Used in Windows Vista operating system and later, Windows Server 2008 operating system and later.
STATUS_FS_DRIVER_REQUIRED	Used in Windows 7, Windows Server 2008 R2, Windows 8, Windows Server 2012.
STATUS_HOST_UNREACHABLE	Used in Windows Vista, Windows Server 2008, Windows 7, and Windows Server 2008 R2, Windows 8, and Windows Server 2012.
STATUS_INSUFFICIENT_RESOURCES	Not used in Windows NT 4.0 SP2.
STATUS_INVALID_NETWORK_RESPONSE	
STATUS_IO_REPARSE_TAG_NOT_HANDLED	Used in Windows 7 operating system and later, Windows Server 2008 R2 operating system and later.
STATUS_IO_TIMEOUT	
STATUS_NETLOGON_NOT_STARTED	Not used in Windows NT 4.0 SP2.
STATUS_NETWORK_BUSY	
STATUS_NETWORK_NAME_DELETED	
STATUS_NETWORK_UNREACHABLE	Not used in Windows NT 4.0 SP2.
STATUS_NO_SUCH_DEVICE	
STATUS_NO_SUCH_LOGON_SESSION	Not used in Windows NT 4.0 SP2, Windows 2000, and Windows XP RTM.
STATUS_REMOTE_NOT_LISTENING	
STATUS_REQUEST_NOT_ACCEPTED	
STATUS_SHARING_PAUSED	Not used in Windows NT 4.0 SP2.
STATUS_UNEXPECTED_NETWORK_ERROR	
STATUS_UNMAPPABLE_CHARACTER	Not used in Windows NT 4.0 SP2.
STATUS_USER_SESSION_DELETED	Not used in Windows NT 4.0 SP2 and Windows 2000.
STATUS_VIRTUAL_CIRCUIT_CLOSED	

<11> Section 3.1.5.4: The initial buffer size used by Windows DFS clients for all DFS referral requests (domain, DC, DFS root, DFS link, and SYSVOL) is 4 KB. Windows DFS clients retry the referral request by doubling the buffer size, up to a maximum of 56 KB.

<12> Section 3.1.5.4.1: Windows clients do not remove an existing domain name from DomainCache.

<13> Section 3.1.5.4.3: If a referral request to a domain controller fails with one of the following error codes (as specified per version of Windows), the client proceeds to the next target. Unless otherwise noted, the code is used in Windows 2000 operating system and later, Windows XP operating system and later. Note that domain support was not added until Windows 2000, so Windows NT 4.0 SP2 does not apply.

Status Code	Support Notes
STATUS_BAD_NETWORK_NAME	Not used.
STATUS_BAD_NETWORK_PATH	
STATUS_CONNECTION_DISCONNECTED	
STATUS_CONNECTION_REFUSED	Used in Windows Vista operating system and later, Windows Server 2008 operating system and later.
STATUS_CONNECTION_RESET	Used in Windows 7 operating system and later, Windows Server 2008 R2 operating system and later.
STATUS_DEVICE_OFF_LINE	
STATUS_DFS_UNAVAILABLE	
STATUS_DISK_OPERATION_FAILED	
STATUS_DUPLICATE_NAME	Used in Windows Vista operating system and later, Windows Server 2008 operating system and later.
STATUS_FS_DRIVER_REQUIRED	Used in Windows 7 operating system and later, Windows Server 2008 R2 operating system and later.
STATUS_HOST_UNREACHABLE	Used in Windows Vista operating system and later, Windows Server 2008 operating system and later.
STATUS_INSUFFICIENT_RESOURCES	
STATUS_INVALID_NETWORK_RESPONSE	
STATUS_IO_REPARSE_TAG_NOT_HANDLED	Used in Windows 7 operating system and later, Windows Server 2008 R2 operating system and later.
STATUS_IO_TIMEOUT	
STATUS_NETLOGON_NOT_STARTED	
STATUS_NETWORK_BUSY	
STATUS_NETWORK_NAME_DELETED	
STATUS_NETWORK_UNREACHABLE	
STATUS_NO_SUCH_DEVICE	Not used in Windows 2000 through Windows Server 2003 inclusive.
STATUS_NO_SUCH_LOGON_SESSION	Not used in Windows 2000 through Windows Server 2003 inclusive.
STATUS_REMOTE_NOT_LISTENING	
STATUS_REQUEST_NOT_ACCEPTED	
STATUS_SHARING_PAUSED	
STATUS_UNEXPECTED_NETWORK_ERROR	
STATUS_UNMAPPABLE_CHARACTER	Not used in Windows 2000 through Windows Server 2003 inclusive.
STATUS_USER_SESSION_DELETED	Not used in Windows 2000 through Windows Server 2003 inclusive.

Status Code	Support Notes
STATUS_VIRTUAL_CIRCUIT_CLOSED	

<14> Section 3.1.5.4.3: If an I/O operation to a target fails with one of the following error codes, as specified per version of Windows, the client proceeds to the next target. Unless otherwise noted, the code is used in Windows NT 4.0 SP2, Windows 2000 operating system and later, Windows XP operating system and later.

Status Code	Support Notes
STATUS_BAD_NETWORK_NAME	Not used.
STATUS_BAD_NETWORK_PATH	
STATUS_CONNECTION_DISCONNECTED	Not used in Windows NT 4.0 SP2.
STATUS_CONNECTION_REFUSED	Used in Windows Vista operating system and later, Windows Server 2008 operating system and later.
STATUS_CONNECTION_RESET	Used in Windows 7 operating system and later, Windows Server 2008 R2 operating system and later.
STATUS_DEVICE_OFF_LINE	
STATUS_DFS_UNAVAILABLE	Not used in Windows NT 4.0 SP2.
STATUS_DISK_OPERATION_FAILED	
STATUS_DUPLICATE_NAME	Used in Windows Vista operating system and later, Windows Server 2008 operating system and later.
STATUS_FS_DRIVER_REQUIRED	Used in Windows 7 operating system and later, Windows Server 2008 R2 operating system and later.
STATUS_HOST_UNREACHABLE	Used in Windows Vista operating system and later, Windows Server 2008 operating system and later.
STATUS_INSUFFICIENT_RESOURCES	Not used in Windows NT 4.0 SP2.
STATUS_INVALID_NETWORK_RESPONSE	
STATUS_IO_REPARSE_TAG_NOT_HANDLED	Used in Windows 7 operating system and later, Windows Server 2008 R2 operating system and later.
STATUS_IO_TIMEOUT	
STATUS_NETLOGON_NOT_STARTED	Not used in Windows NT 4.0 SP2.
STATUS_NETWORK_BUSY	
STATUS_NETWORK_NAME_DELETED	
STATUS_NETWORK_UNREACHABLE	Not used in Windows NT 4.0 SP2.
STATUS_NO_SUCH_DEVICE	
STATUS_NO_SUCH_LOGON_SESSION	Not used in Windows NT 4.0 SP2, Windows 2000, and Windows XP RTM.
STATUS_REMOTE_NOT_LISTENING	

Status Code	Support Notes
STATUS_REQUEST_NOT_ACCEPTED	
STATUS_SHARING_PAUSED	Not used in Windows NT 4.0 SP2.
STATUS_UNEXPECTED_NETWORK_ERROR	
STATUS_UNMAPPABLE_CHARACTER	Not used in Windows NT 4.0 SP2.
STATUS_USER_SESSION_DELETED	Not used in Windows NT 4.0 SP2 and Windows 2000.
STATUS_VIRTUAL_CIRCUIT_CLOSED	

<15> Section 3.1.5.4.3: This can happen when the server accessed has been consolidated using DFSN Root Consolidation. The Windows client handles this response in the same way that it handles link referrals that it receives in response to link referral requests.

<16> Section 3.1.5.4.3: Windows Server 2003 and Windows XP DFS clients fail the I/O operation if the ReferralCache entry refresh fails. Windows Vista operating system and later, Windows Server 2008 operating system and later DFS clients use a soft time-out equal to the TTL and a hard time-out equal to 4\*TTL.

<17> Section 3.2: **DFS server** functionality is available only Windows NT Server 4.0 operating system with Service Pack 2 (SP2), Windows 2000 Server operating system and later.

Windows client operating systems, such as Windows NT 4.0 operating system Professional, Windows 98 operating system and later do not implement the DFS server functionality.

<18> Section 3.2.5.1: The highest DFS referral version supported by each version of Windows on which DFS server functionality is implemented is as follows.

Windows server version	Highest DFS referral version
Windows NT 4.0	2
Windows 2000 Server	3
Windows Server 2003	3
Windows Server 2003 operating system with Service Pack 1 (SP1)	4
Windows Server 2008	4
Windows Server 2008 R2	4
Windows Server 2012	4
Windows Server 2012 R2	4
Windows Server 2016	4
Windows Server operating system	4
Windows Server 2019	4
Windows Server 2022	4



<19> Section 3.2.5.1: Windows NT 4.0 SP2, Windows 2000, and Windows Server 2003 insert a variable number of padding bytes.

<20> Section 3.2.5.4: Windows NT Server 4.0, Windows 2000, and Windows Server 2003 fail the referral request with a STATUS\_NO\_SUCH\_DEVICE (0xC000000E) return code.

<21> Section 3.2.5.5: Windows 2000 Server fails the referral request with a STATUS\_NO\_SUCH\_DEVICE (0xC000000E) return code.

<22> Section 3.2.5.5: Windows NT Server 4.0, Windows 2000, Windows Server 2003, Windows Server 2003 R2 operating system, Windows Server 2008, and Windows Server 2008 R2 fail the referral request with a STATUS\_NOT\_FOUND (0xC0000225) return code.

<23> Section 3.2.5.5: Windows 2000 Server uses the SiteInformationBLOB in the DFS metadata of a domain-based DFS namespace to determine the site of a DFS target. Windows Server 2003 operating system and later use the IP address of a DFS target to determine its site.

For interlinks, if the target is a domain-based DFS namespace, there cannot be more than one target for the link. Multiple stand-alone DFS namespace targets are supported as interlink targets. Therefore, there is no special handling for interlink targets. A referral response returns only the immediate interlink targets, not the targets of the domain-based DFS namespace interlink target itself.

<24> Section 3.2.5.5: Windows 2000 Server does not support DFS referral site costing. Windows Server 2003 operating system and later support DFS referral site costing.

<25> Section 3.2.5.5: **DFS in-site referral mode** is applied only to DFS link targets and not to DFS root targets in Windows 2000 Server. DFS in-site referral mode is applied to all targets in Windows Server 2003 operating system and later.

Windows 2000 Server does not support DFS referral site costing. Only Windows Server 2003 operating system and later support DFS referral site costing.

Windows-based servers randomize the order of targets within each target set to spread client load across the targets on a per DFS referral response basis.

<26> Section 3.2.5.5 ~~<26> Section 3.2.5.5:~~ Windows Server 2003 with SP1, Windows Server 2008 operating system and later, sort targets have non-default priorities as described previously.

<27> Section 3.2.5.5: Windows will silently drop targets that do not fit in the response buffer.

<28> Section 3.2.5.5: Windows Server 2003 with SP1 operating system and later set all other fields to 0. The earlier versions of Windows (Windows NT 4.0 SP2, Windows 2000, Windows Server 2003) allow the other fields to be any value.

<29> Section 3.2.5.5: In Windows NT 4.0 SP2 and Windows 2000, set the **DFSAlternatePathOffset** field to point to an 8.3 string representation of the string pointed to by **DFSPathOffset** if it is not a legal 8.3 string. Otherwise, if **DFSPathOffset** points to a legal 8.3 string, **DFSAlternatePathOffset** points to a separate copy of the same string. Windows Server 2003 operating system and later set the **DFSPathOffset** field and the **DFSAlternatePathOffset** field to point to separate copies of the identical string.

<30> Section 3.2.5.5: By default, Windows Server 2003, Windows Server 2008, Windows Server 2008 R2, Windows Server 2012, and Windows Server 2012 R2 return DNS host names that are not fully qualified for targets.

<31> Section 3.3: DCs are supported only on Windows 2000 Server operating system and later.

<32> Section 3.3.3: On Windows-based domain controllers, preferred logon is enabled with the PreferLogonDC registry setting (see [KB831201]).

<33> Section 3.3.5.2: Windows-based servers have a server-side limit of 56 KB on the maximum size of a domain referral response. Within that limit, the server attempts to return all the domain names that it has. If the size of the domain referral entries is greater than 56 KB, it retains only 56 KB.

<34> Section 3.3.5.2: Windows Server 2008 operating system and later fail the DFS referral request when the value received in the **MaxReferralLevel** field of REQ\_GET\_DFS\_REFERRAL (section 2.2.2) is less than 3. The earlier versions of Windows (Windows NT 4.0 SP2, Windows 2000, Windows Server 2003) return the referral formatted in the requested version.

<35> Section 3.3.5.2: Windows-based servers have a server-side limit of 56 KB on the maximum size of a domain referral response. Within that limit, the server attempts to return all the domain names that it has. If the size of the domain referral entries is greater than 56 KB, it retains only 56 KB.

<36> Section 3.3.5.2: Windows returns a fixed value of 600 seconds.

<37> Section 3.3.5.3: Windows NT Server 4.0 SP2, Windows 2000, and Windows Server 2003 do not fail the request if the **MaxReferralLevel** field of REQ\_GET\_DFS\_REFERRAL (section 2.2.2) is less than 3, and the referral response is returned formatted appropriately for the requested version.

<38> Section 3.3.5.3: Windows returns a fixed value of 600 seconds.

<39> Section 3.3.5.3: On Windows-based domain controllers, Distributed File System (DFS) referral site costing is enabled by setting the SiteCostedReferrals value in the registry key HKEY\_LOCAL\_MACHINE\SYSTEM\CurrentControlSet\Services\Dfs\Parameters\ to 1.

<40> Section 3.3.5.4: Windows 2000 Server does not support DFS referral site costing for sysvol referral responses. Windows Server 2003 and subsequent versions, including Windows Server 2008 operating system and later can be configured to support DFS referral site costing for sysvol referral responses. DFS referral site costing is disabled by default in Windows Server 2003 and enabled by default in Windows Server 2008 operating system and later. Set the registry value SiteCostedReferrals under the registry key HKEY\_LOCAL\_MACHINE\System\CurrentControlSet-\Services-\Dfs\Parameters to 1 at service startup to enable DFS referral site costing for sysvol referral responses in Windows Server 2003 versions.

<41> Section 3.3.5.4: Windows 2000 Server does not support DFS referral site costing. Windows Server 2003 operating system and later support DFS referral site costing.

<42> Section 3.3.5.4: On Windows-based domain controllers, DFS referral site costing is enabled by setting the SiteCostedReferrals value in the registry key HKEY\_LOCAL\_MACHINE\SYSTEM\CurrentControlSet\Services\Dfs\Parameters\ to 1.

<43> Section 3.3.5.4: In Windows Server 2003 with SP1 and subsequent versions, the registry value SysvolNetlogonTargetFailback under the registry key HKEY\_LOCAL\_MACHINE\System\CurrentControlSet\Services\Dfs\Parameters controls target failback for sysvol referrals.

<44> Section 3.3.5.4: Windows sets the **TimeToLive** field to a fixed value of 900 seconds.

<45> Section 3.3.5.4: In Windows NT 4.0 SP2 and Windows 2000, set the **DFSAlternatePathOffset** field to point to an 8.3 string representation of the string pointed to by **DFSPathOffset** if it is not a legal 8.3 string. Otherwise, if **DFSPathOffset** points to a legal 8.3 string, **DFSAlternatePathOffset** points to a separate copy of the same string. Windows Server 2003 operating system and later set the **DFSPathOffset** field and the **DFSAlternatePathOffset** field to point to separate copies of the identical string.

<46> Section 3.3.5.5: Windows 2000 Server fails the referral request with a STATUS\_NO\_SUCH\_DEVICE (0xC000000E) return code. Windows Server 2003 fails the referral request with a STATUS\_UNSUCCESSFUL (0xC0000001) return code.

## 7 Change Tracking

This section identifies changes that were made to this document since the last release. Changes are classified as Major, Minor, or None.

The revision class **Major** means that the technical content in the document was significantly revised. Major changes affect protocol interoperability or implementation. Examples of major changes are:

- A document revision that incorporates changes to interoperability requirements.
- A document revision that captures changes to protocol functionality.

The revision class **Minor** means that the meaning of the technical content was clarified. Minor changes do not affect protocol interoperability or implementation. Examples of minor changes are updates to clarify ambiguity at the sentence, paragraph, or table level.

The revision class **None** means that no new technical changes were introduced. Minor editorial and formatting changes may have been made, but the relevant technical content is identical to the last released version.

The changes made to this document are listed in the following table. For more information, please contact [dochelp@microsoft.com](mailto:dochelp@microsoft.com).

Section	Description	Revision class
6 Appendix A: Product Behavior	Added Windows Server 2025 to the list of applicable products.	Major

## 8 Index

### A

- Abstract data model
  - client 25
  - DC 52
  - root target server
    - algorithm for sorting target sites based on site cost 46
    - algorithm for sorting target sites based on site location 45
    - overview 45
  - server 45
- Applicability 13

### C

- Capability negotiation 14
- Change tracking 75
- Client
  - abstract data model 25
  - dfs interface 25
  - higher-layer triggered events
    - sending referral request to server 40
    - user/application-initiated I/O operation on UNC path 26
  - I/O Operation to a DFS Root Target or DFS Link Target Succeeds method 42
  - I/O Operation to Target Fails with an Error Other Than STATUS\_PATH\_NOT\_COVERED method 42
  - I/O Operation to Target Fails with STATUS\_PATH\_NOT\_COVERED method 41
  - initialization 26
  - local events 45
  - message processing
    - I/O operation to target failure other than STATUS\_PATH\_NOT\_COVERED error 42
    - I/O operation to target success 42
    - receiving referral response 42
    - STATUS\_PATH\_NOT\_COVERED I/O operation to target failure 41
  - overview 25
  - Receiving a Referral Response method 42
  - requirements (section 1.5.1 13, section 1.5.2 13)
  - sequencing rules
    - I/O operation to target failure other than STATUS\_PATH\_NOT\_COVERED error 42
    - I/O operation to target success 42
    - receiving referral response 42
    - STATUS\_PATH\_NOT\_COVERED I/O operation to target failure 41
  - timer events 45
  - timers 26

### D

- Data model - abstract
  - client 25
  - DC 52
  - root target server
    - algorithm for sorting target sites based on site cost 46
    - algorithm for sorting target sites based on site location 45
    - overview 45
  - server 45
- Dc referral example 59
- dfs interface 25
- dfs root target interface 45
- DFS\_REFERRAL\_V1 packet 20
- DFS\_REFERRAL\_V2 packet 21
- DFS\_REFERRAL\_V3 packet 22
- DFS\_REFERRAL\_V3\_NAMELIST\_0 packet 22
- DFS\_REFERRAL\_V3\_NAMELIST\_1 packet 23
- DFS\_REFERRAL\_V4 23
- Domain controller (DC)

- abstract data model 52
- higher-layer triggered events 52
- initialization 52
- local events 57
- message processing
  - receiving DC referral request 53
  - receiving domain referral request 52
  - receiving root or link referral request 56
  - receiving sysvol referral request 55
- overview 51
- requirements (section 1.5.1 13, section 1.5.3 13)
- sequencing rules
  - receiving DC referral request 53
  - receiving domain referral request 52
  - receiving root or link referral request 56
  - receiving sysvol referral request 55
- timer events 57
- timers 52
- Domain controller referral example 59
- Domain referral example 58
- Domain-based dfs link referral example 61
- Domain-based dfs root referral example 60
- Domain-based dfs root referral packet trace example 62

## **E**

### Events

- local - client 45
- local - server 51
- timer - client 45
- timer - server 51

### Examples

- dc referral 59
- domain referral 58
- domain-based dfs link referral 61
- domain-based dfs root referral 60
- domain-based dfs root referral packet trace 62
- standalone dfs root referral 65
- stand-alone DFS root referral 65

## **F**

- Fields - vendor-extensible 14

## **G**

- Glossary 7

## **H**

### Higher-layer triggered events

- client
  - sending referral request to server 40
  - user/application-initiated I/O operation on UNC path 26
- DC 52
- root target server
  - handling DFS referral request 46
  - handling path normalization request 46

- Host name (servername path name component 16

## **I**

- I/O Operation to a DFS Root Target or DFS Link Target Succeeds method 42

- I/O Operation to Target Fails with an Error Other Than STATUS\_PATH\_NOT\_COVERED method 42

- I/O Operation to Target Fails with STATUS\_PATH\_NOT\_COVERED method 41
- I/O operation to target failure
  - error other than STATUS\_PATH\_NOT\_COVERED 42
  - STATUS\_PATH\_NOT\_COVERED error 41
- I/O operation to target success 42
- Implementer - security considerations 66
- Index of security parameters 66
- Informative references 11
- Initialization
  - client 26
  - DC 52
  - root target server 46
  - server 46
- Interfaces - client
  - dfs 25
- Interfaces - server
  - dfs root target 45
- Introduction 7

## L

- Local events
  - client 45
  - DC 57
  - root target server 51
  - server 51

## M

- Message processing
  - client
    - I/O operation to target failure other than STATUS\_PATH\_NOT\_COVERED error 42
    - I/O operation to target success 42
    - receiving referral response 42
    - STATUS\_PATH\_NOT\_COVERED I/O operation to target failure 41
  - DC
    - receiving DC referral request 53
    - receiving domain referral request 52
    - receiving root or link referral request 56
    - receiving sysvol referral request 55
  - root target server
    - receiving DC referral request 47
    - receiving DFS referral request 47
    - receiving domain referral request 47
    - receiving root or link referral request 48
    - receiving sysvol referral request 47
- Messages
  - syntax
    - conventions 15
    - overview 15
    - referral entry types 20
  - transport 15
- Methods
  - I/O Operation to a DFS Root Target or DFS Link Target Succeeds 42
  - I/O Operation to Target Fails with an Error Other Than STATUS\_PATH\_NOT\_COVERED 42
  - I/O Operation to Target Fails with STATUS\_PATH\_NOT\_COVERED 41
  - Receiving a DC Referral Request 47
  - Receiving a DFS Referral Request 47
  - Receiving a Domain Referral Request 47
  - Receiving a Referral Response 42
  - Receiving a Root Referral Request or Link Referral Request 48
  - Receiving a sysvol Referral Request 47

## N

Normative references 10

## O

Overview (synopsis) 11

## P

Parameters - security index 66

Path name components

- overview 16

- servername 16

- share 16

Preconditions

- client (section 1.5.1 13, section 1.5.2 13)

- DC (section 1.5.1 13, section 1.5.3 13)

- root target server (section 1.5.1 13, section 1.5.3 13)

Prerequisites

- client (section 1.5.1 13, section 1.5.2 13)

- DC (section 1.5.1 13, section 1.5.3 13)

- root target server (section 1.5.1 13, section 1.5.3 13)

Product behavior 67

Protocol Details

- overview 25

## R

Receiving a DC Referral Request method 47

Receiving a DFS Referral Request method 47

Receiving a Domain Referral Request method 47

Receiving a Referral Response method 42

Receiving a Root Referral Request or Link Referral Request method 48

Receiving a sysvol Referral Request method 47

References 10

- informative 11

- normative 10

Referral entry types 20

Referral request

- handling 46

- receiving

  - DC referral request (section 3.2.5.3 47, section 3.3.5.3 53)

  - DFS referral request 47

  - domain referral request (section 3.2.5.2 47, section 3.3.5.2 52)

  - root or link referral request (section 3.2.5.5 48, section 3.3.5.5 56)

  - sysvol referral request 47

- sending from client to server 40

Referral response

- algorithm for sorting target sites

  - based on site cost 46

  - based on site location 45

- receiving

  - DC referral response 43

  - determining whether referral response is interlink 45

  - domain referral response 42

  - overview 42

  - root or link referral response 43

  - sysvol referral response 44

Relationship to other protocols 12

REQ\_GET\_DFS\_REFERRAL packet 17

REQ\_GET\_DFS\_REFERRAL\_EX packet 17

RequestData packet 18

RESP\_GET\_DFS\_REFERRAL packet 19

Root target server

- abstract data model

  - algorithm for sorting target sites based on site cost 46

- algorithm for sorting target sites based on site location 45
- overview 45
- higher-layer triggered events
  - handling DFS referral request 46
  - handling path normalization request 46
- initialization 46
- local events 51
- message processing
  - receiving DC referral request 47
  - receiving DFS referral request 47
  - receiving domain referral request 47
  - receiving root or link referral request 48
  - receiving sysvol referral request 47
- overview 45
- requirements (section 1.5.1 13, section 1.5.3 13)
- sequencing rules
  - receiving DC referral request 47
  - receiving DFS referral request 47
  - receiving domain referral request 47
  - receiving root or link referral request 48
  - receiving sysvol referral request 47
- timer events 51
- timers 46
- UNC path 17

## S

### Security

- implementer considerations 66
- parameter index 66

### Sequencing rules

- client
  - I/O operation to target failure other than STATUS\_PATH\_NOT\_COVERED error 42
  - I/O operation to target success 42
  - receiving referral response 42
  - STATUS\_PATH\_NOT\_COVERED I/O operation to target failure 41

### DC

- receiving DC referral request 53
- receiving domain referral request 52
- receiving root or link referral request 56
- receiving sysvol referral request 55

### root target server

- receiving DC referral request 47
- receiving DFS referral request 47
- receiving domain referral request 47
- receiving root or link referral request 48
- receiving sysvol referral request 47

### Server

- abstract data model 45
- dfs root target interface 45
- initialization 46
- local events 51
- overview 45
- Receiving a DC Referral Request method 47
- Receiving a DFS Referral Request method 47
- Receiving a Domain Referral Request method 47
- Receiving a Root Referral Request or Link Referral Request method 48
- Receiving a sysvol Referral Request method 47
- timer events 51
- timers 46

### Server - root target

- abstract data model
  - algorithm for sorting target sites based on site cost 46
  - algorithm for sorting target sites based on site location 45
  - overview 45



- higher-layer triggered events
  - handling DFS referral request 46
  - handling path normalization request 46
- initialization 46
- local events 51
- message processing
  - receiving DC referral request 47
  - receiving DFS referral request 47
  - receiving domain referral request 47
  - receiving root or link referral request 48
  - receiving sysvol referral request 47
- overview 45
- requirements 13
- sequencing rules
  - receiving DC referral request 47
  - receiving DFS referral request 47
  - receiving domain referral request 47
  - receiving root or link referral request 48
  - receiving sysvol referral request 47
- timer events 51
- timers 46
- UNC path 17
- servername path name component (host name) 16
- Share name (share path name component 16
- share path name component (share name) 16
- Standalone dfs root referral example 65
- Stand-alone DFS root referral example 65
- Standards assignments 14
- Syntax
  - conventions
    - DFS link 16
    - DFS root 16
    - DFS root target 17
    - DFS target 17
    - host name (servername component) 16
    - overview 15
    - share component (share name) 16
    - UNC path 16
  - overview 15
  - referral entry types 20

## T

- Timer events
  - client 45
  - DC 57
  - root target server 51
  - server 51
- Timers
  - client 26
  - DC 52
  - root target server 46
  - server 46
- Tracking changes 75
- Transport 15
- Triggered events - higher-layer
  - client
    - sending referral request to server 40
    - user/application-initiated I/O operation on UNC path 26
  - DC 52
  - root target server
    - handling DFS referral request 46
    - handling path normalization request 46

## U

Universal Naming Convention (UNC) path  
DFS link 16  
DFS root 16  
DFS root target 17  
DFS target 17  
overview 16

## **V**

Vendor-extensible fields 14  
Versioning 14