

[MS-COM]: Component Object Model Plus (COM+) Protocol

Intellectual Property Rights Notice for Open Specifications Documentation

- **Technical Documentation.** Microsoft publishes Open Specifications documentation for protocols, file formats, languages, standards as well as overviews of the interaction among each of these technologies.
- **Copyrights.** This documentation is covered by Microsoft copyrights. Regardless of any other terms that are contained in the terms of use for the Microsoft website that hosts this documentation, you may make copies of it in order to develop implementations of the technologies described in the Open Specifications and may distribute portions of it in your implementations using these technologies or your documentation as necessary to properly document the implementation. You may also distribute in your implementation, with or without modification, any schema, IDL's, or code samples that are included in the documentation. This permission also applies to any documents that are referenced in the Open Specifications.
- **No Trade Secrets.** Microsoft does not claim any trade secret rights in this documentation.
- **Patents.** Microsoft has patents that may cover your implementations of the technologies described in the Open Specifications. Neither this notice nor Microsoft's delivery of the documentation grants any licenses under those or any other Microsoft patents. However, a given Open Specification may be covered by Microsoft [Open Specification Promise](#) or the [Community Promise](#). If you would prefer a written license, or if the technologies described in the Open Specifications are not covered by the Open Specifications Promise or Community Promise, as applicable, patent licenses are available by contacting iplg@microsoft.com.
- **Trademarks.** The names of companies and products contained in this documentation may be covered by trademarks or similar intellectual property rights. This notice does not grant any licenses under those rights. For a list of Microsoft trademarks, visit www.microsoft.com/trademarks.
- **Fictitious Names.** The example companies, organizations, products, domain names, email addresses, logos, people, places, and events depicted in this documentation are fictitious. No association with any real company, organization, product, domain name, email address, logo, person, place, or event is intended or should be inferred.

Reservation of Rights. All other rights are reserved, and this notice does not grant any rights other than specifically described above, whether by implication, estoppel, or otherwise.

Tools. The Open Specifications do not require the use of Microsoft programming tools or programming environments in order for you to develop an implementation. If you have access to Microsoft programming tools and environments you are free to take advantage of them. Certain Open Specifications are intended for use in conjunction with publicly available standard specifications and network programming art, and assumes that the reader either is familiar with the aforementioned material or has immediate access to it.

Revision Summary

Date	Revision History	Revision Class	Comments
12/18/2006	0.1		MCPD Milestone 2 Initial Availability
03/02/2007	1.0		MCPD Milestone 2
04/03/2007	1.1		Monthly release
05/11/2007	1.2		Monthly release
06/01/2007	1.2.1	Editorial	Revised and edited the technical content.
07/03/2007	1.2.2	Editorial	Revised and edited the technical content.
07/20/2007	1.2.3	Editorial	Revised and edited the technical content.
08/10/2007	1.2.4	Editorial	Revised and edited the technical content.
09/28/2007	1.2.5	Editorial	Revised and edited the technical content.
10/23/2007	1.2.6	Editorial	Revised and edited the technical content.
11/30/2007	1.2.7	Editorial	Revised and edited the technical content.
01/25/2008	1.2.8	Editorial	Revised and edited the technical content.
03/14/2008	1.2.9	Editorial	Revised and edited the technical content.
05/16/2008	1.2.10	Editorial	Revised and edited the technical content.
06/20/2008	1.3	Minor	Updated the technical content.
07/25/2008	1.3.1	Editorial	Revised and edited the technical content.
08/29/2008	1.3.2	Editorial	Revised and edited the technical content.
10/24/2008	1.3.3	Major	Updated and revised the technical content.
12/05/2008	2.0	Major	Updated and revised the technical content.
01/16/2009	3.0	Major	Updated and revised the technical content.
02/27/2009	4.0	Major	Updated and revised the technical content.
04/10/2009	4.1	Minor	Updated the technical content.
05/22/2009	4.2	Minor	Updated the technical content.
07/02/2009	4.2.1	Editorial	Revised and edited the technical content.
08/14/2009	4.2.2	Editorial	Revised and edited the technical content.
09/25/2009	4.3	Minor	Updated the technical content.

Date	Revision History	Revision Class	Comments
11/06/2009	4.3.1	Editorial	Revised and edited the technical content.
12/18/2009	4.3.2	Editorial	Revised and edited the technical content.
01/29/2010	4.4	Minor	Updated the technical content.
03/12/2010	4.4.1	Editorial	Revised and edited the technical content.
04/23/2010	5.0	Major	Updated and revised the technical content.
06/04/2010	5.1	Minor	Updated the technical content.
07/16/2010	5.1	No change	No changes to the meaning, language, or formatting of the technical content.
08/27/2010	5.1	No change	No changes to the meaning, language, or formatting of the technical content.
10/08/2010	5.1	No change	No changes to the meaning, language, or formatting of the technical content.
11/19/2010	5.1	No change	No changes to the meaning, language, or formatting of the technical content.
01/07/2011	5.1	No change	No changes to the meaning, language, or formatting of the technical content.
02/11/2011	5.1	No change	No changes to the meaning, language, or formatting of the technical content.
03/25/2011	5.1	No change	No changes to the meaning, language, or formatting of the technical content.
05/06/2011	5.1	No change	No changes to the meaning, language, or formatting of the technical content.
06/17/2011	5.2	Minor	Clarified the meaning of the technical content.
09/23/2011	5.2	No change	No changes to the meaning, language, or formatting of the technical content.
12/16/2011	6.0	Major	Significantly changed the technical content.
03/30/2012	6.0	No change	No changes to the meaning, language, or formatting of the technical content.
07/12/2012	6.0	No change	No changes to the meaning, language, or formatting of the technical content.
10/25/2012	6.0	No change	No changes to the meaning, language, or formatting of the technical content.
01/31/2013	6.0	No change	No changes to the meaning, language, or formatting of the technical content.

Date	Revision History	Revision Class	Comments
08/08/2013	6.1	Minor	Clarified the meaning of the technical content.
11/14/2013	6.1	No change	No changes to the meaning, language, or formatting of the technical content.
02/13/2014	6.1	No change	No changes to the meaning, language, or formatting of the technical content.

Contents

1 Introduction	10
1.1 Glossary	10
1.2 References	11
1.2.1 Normative References	11
1.2.2 Informative References	11
1.3 Overview	12
1.3.1 Context Properties	12
1.3.1.1 Context Properties and Activations	12
1.3.1.1.1 Client Context Within Activations	13
1.3.1.1.2 Prototype Context Within Activations	13
1.3.1.1.3 Diagram	14
1.3.1.2 Context Properties and Marshaling	14
1.3.1.2.1 Diagram	15
1.3.1.3 Context Properties and ORPC Calls	15
1.3.1.3.1 Diagram	16
1.3.2 Transactions	16
1.3.2.1 Transaction Stream	16
1.3.2.2 Root Transaction Object	16
1.3.2.3 Non-root Transaction Object	17
1.3.2.4 Diagram	17
1.3.2.5 MS-DTC Transaction Propagation Methods	17
1.3.2.6 Transaction Lifetime	17
1.3.3 Activities	18
1.3.4 Security	18
1.3.5 User-Defined Properties	18
1.3.6 Partitions	18
1.4 Relationship to Other Protocols	19
1.5 Prerequisites/Preconditions	19
1.6 Applicability Statement	19
1.7 Versioning and Capability Negotiation	19
1.8 Vendor-Extensible Fields	19
1.9 Standards Assignments	19
2 Messages	21
2.1 Transport	21
2.2 Common Data Types	21
2.2.1 LengthPrefixedName	21
2.2.2 Activation Context Properties	21
2.2.2.1 Transaction Context Property	22
2.2.2.1.1 TransactionContextPropertyHeader	22
2.2.2.1.2 TransactionStream	23
2.2.2.1.3 TransactionBuffer	24
2.2.2.2 Activity Context Property	25
2.2.2.3 User-Defined Context Property	25
2.2.2.3.1 UserProperty	26
2.2.3 Context ORPC Extensions	27
2.2.3.1 Transaction ORPC Extensions	27
2.2.3.1.1 Transaction ORPC Call Extensions	27
2.2.3.1.1.1 TransactionPropCallHeader	28
2.2.3.1.1.2 TransactionPropCallExportCookie	29

2.2.3.1.1.3	TransactionPropCallTransmitterBuffer.....	29
2.2.3.1.2	Transaction ORPC Return Extensions	30
2.2.3.1.2.1	TransactionPropRetHeader.....	30
2.2.3.1.2.2	TransactionPropRetWhereabouts	31
2.2.3.2	Security ORPC Extension	31
2.2.3.2.1	Security Property	32
2.2.3.2.1.1	Security Property Types	32
2.2.3.2.2	Security Property Collection Header.....	33
2.2.3.2.3	Security Property Collection.....	34
2.2.3.2.4	Security ORPC Extension.....	34
2.2.4	OBJREF_EXTENDED Context Properties	35
2.2.4.1	Transaction Envoy Property	35
2.2.4.2	Security Envoy Property	36
2.2.5	Class Factory Wrapper	37
2.2.6	Constants.....	39
2.2.6.1	DTCO Capabilities	39
2.2.6.2	Transaction Isolation Levels	40
3	Protocol Details.....	41
3.1	Client Root Transaction Object Activation Details	41
3.1.1	Abstract Data Model	41
3.1.2	Timers	42
3.1.3	Initialization	42
3.1.4	Message Processing Events and Sequencing Rules.....	42
3.1.4.1	Activation Using Transaction Stream	42
3.1.4.2	Activation Using Transaction Buffer	43
3.1.5	Timer Events	43
3.1.6	Other Local Events	43
3.1.6.1	Transaction Commit.....	43
3.1.6.2	Transaction Abort	43
3.2	Client Non-Root Transaction Object Activation Details	44
3.2.1	Abstract Data Model	44
3.2.2	Timers	44
3.2.3	Initialization	44
3.2.4	Message Processing Events and Sequencing Rules.....	44
3.2.5	Timer Events	44
3.2.6	Other Local Events	44
3.2.6.1	Transaction Outcome Participation	44
3.3	Client Activity Activation Details	45
3.3.1	Abstract Data Model	45
3.3.2	Timers	45
3.3.3	Initialization	45
3.3.4	Message Processing Events and Sequencing Rules.....	45
3.3.5	Timer Events	45
3.3.6	Other Local Events	45
3.4	Client Partition Activation Details	45
3.4.1	Abstract Data Model	45
3.4.2	Timers	45
3.4.3	Initialization	45
3.4.4	Message Processing Events and Sequencing Rules.....	46
3.4.5	Timer Events	46
3.4.6	Other Local Events	46
3.5	Client User Property Activation Details.....	46

3.5.1	Abstract Data Model	46
3.5.2	Timers	46
3.5.3	Initialization	46
3.5.4	Message Processing Events and Sequencing Rules.....	46
3.5.5	Timer Events	46
3.5.6	Other Local Events	47
3.6	Client Class Factory Wrapper Activation Details	47
3.6.1	Abstract Data Model	47
3.6.2	Timers	47
3.6.3	Initialization	47
3.6.4	Message Processing Events and Sequencing Rules.....	47
3.6.5	Timer Events	48
3.6.6	Other Local Events	48
3.7	Server Root Transaction Object Activation Details	48
3.7.1	Abstract Data Model	48
3.7.2	Timers	48
3.7.3	Initialization	48
3.7.4	Message Processing Events and Sequencing Rules.....	48
3.7.5	Timer Events	48
3.7.6	Other Local Events	49
3.8	Server Non-Root Transaction Object Activation Details	49
3.8.1	Abstract Data Model	49
3.8.2	Timers	49
3.8.3	Initialization	49
3.8.4	Message Processing Events and Sequencing Rules.....	50
3.8.5	Timer Events	50
3.8.6	Other Local Events	50
3.8.6.1	Transaction Outcome Participation	50
3.9	Server Activity Activation Details	50
3.9.1	Abstract Data Model	50
3.9.2	Timers	51
3.9.3	Initialization	51
3.9.4	Message Processing Events and Sequencing Rules.....	51
3.9.5	Timer Events	51
3.9.6	Other Local Events	51
3.10	Server Partition Activation Details	51
3.10.1	Abstract Data Model.....	51
3.10.2	Timers	51
3.10.3	Initialization.....	51
3.10.4	Message Processing Events and Sequencing Rules.....	52
3.10.5	Timer Events	52
3.10.6	Other Local Events.....	52
3.11	Server User Property Activation Details.....	52
3.11.1	Abstract Data Model.....	52
3.11.2	Timers	52
3.11.3	Initialization.....	52
3.11.4	Message Processing Events and Sequencing Rules.....	52
3.11.5	Timer Events	52
3.11.6	Other Local Events.....	52
3.12	Server Class Factory Wrapper Activation Details	53
3.12.1	Abstract Data Model.....	53
3.12.2	Timers	53
3.12.3	Initialization.....	53

3.12.4	Message Processing Events and Sequencing Rules	53
3.12.5	Timer Events	54
3.12.6	Other Local Events.....	54
3.13	Client Transaction ORPC Extension Details	54
3.13.1	Abstract Data Model.....	54
3.13.2	Timers	54
3.13.3	Initialization.....	54
3.13.4	Message Processing Events and Sequencing Rules	55
3.13.4.1	Diagram	56
3.13.5	Timer Events	57
3.13.6	Other Local Events.....	57
3.13.6.1	Transaction Outcome Participation	57
3.14	Client Security ORPC Extension Details	58
3.14.1	Abstract Data Model.....	58
3.14.2	Timers	58
3.14.3	Initialization.....	58
3.14.4	Message Processing Events and Sequencing Rules	58
3.14.5	Timer Events	61
3.14.6	Other Local Events.....	61
3.15	Server Transaction ORPC Extension Details	61
3.15.1	Abstract Data Model.....	61
3.15.2	Timers	61
3.15.3	Initialization.....	61
3.15.4	Message Processing Events and Sequencing Rules	62
3.15.5	Timer Events	65
3.15.6	Other Local Events.....	65
3.15.6.1	Server Non-Root Transaction Object Communication	65
3.15.6.2	Transaction Outcome Participation	65
3.16	Server Security ORPC Extension Details.....	66
3.16.1	Abstract Data Model.....	66
3.16.2	Timers	66
3.16.3	Initialization.....	66
3.16.4	Message Processing Events and Sequencing Rules	66
3.16.5	Timer Events	66
3.16.6	Other Local Events.....	66
3.17	Server Activity ORPC Processing Details.....	66
3.17.1	Abstract Data Model.....	66
3.17.2	Timers	67
3.17.3	Initialization.....	67
3.17.4	Message Processing Events and Sequencing Rules	67
3.17.5	Timer Events	68
3.17.6	Other Local Events.....	68
3.18	Server Transaction Envoy Marshaling Details.....	68
3.18.1	Abstract Data Model.....	68
3.18.2	Timers	68
3.18.3	Initialization.....	68
3.18.4	Message Processing Events and Sequencing Rules	69
3.18.5	Timer Events	69
3.18.6	Other Local Events.....	69
3.19	Server Security Envoy Marshaling Details.....	69
3.19.1	Abstract Data Model.....	69
3.19.2	Timers	69
3.19.3	Initialization.....	69

3.19.4	Message Processing Events and Sequencing Rules	70
3.19.5	Timer Events	70
3.19.6	Other Local Events.....	70
3.20	Client Transaction Envoy Unmarshaling Details	70
3.20.1	Abstract Data Model.....	70
3.20.2	Timers	70
3.20.3	Initialization.....	71
3.20.4	Message Processing Events and Sequencing Rules	71
3.20.5	Timer Events	71
3.20.6	Other Local Events.....	71
3.21	Client Transaction Envoy Marshaling Details	71
3.21.1	Abstract Data Model.....	71
3.21.2	Timers	72
3.21.3	Initialization.....	72
3.21.4	Message Processing Events and Sequencing Rules	72
3.21.5	Timer Events	72
3.21.6	Other Local Events.....	72
3.22	Client Security Unmarshaling Details	72
3.22.1	Abstract Data Model.....	72
3.22.2	Timers	72
3.22.3	Initialization.....	72
3.22.4	Message Processing Events and Sequencing Rules	73
3.22.5	Timer Events	73
3.22.6	Other Local Events.....	73
3.23	ITransactionStream Server Details	73
3.23.1	Abstract Data Model.....	73
3.23.2	Timers	73
3.23.3	Initialization.....	73
3.23.4	Message Processing Events and Sequencing Rules	73
3.23.4.1	ITransactionStream::GetSeqAndTxViaExport (Opnum 3)	74
3.23.4.2	ITransactionStream::GetSeqAndTxViaTransmitter (Opnum 4)	75
3.23.4.3	ITransactionStream::GetTxViaExport (Opnum 5)	76
3.23.4.4	ITransactionStream::GetTxViaTransmitter (Opnum 6)	76
3.23.5	Timer Events	77
3.23.6	Other Local Events.....	77
4	Protocol Examples	78
4.1	Client to RootTxn to Non-RootTxn Example	78
5	Security	81
5.1	Security Considerations for Implementers	81
5.2	Index of Security Parameters	81
6	Appendix A: Full IDL.....	82
7	Appendix B: Product Behavior	83
8	Change Tracking.....	84
9	Index	85

1 Introduction

The Component Object Model Plus (COM+) Protocol consists of a DCOM interface (and [DCOM Remote Protocol](#) extensions) used for adding **transactions**, implementing synchronization, managing multiple **object class** configurations, enforcing security, and providing additional functionality and attributes to DCOM-based distributed object applications.

Sections 1.8, 2, and 3 of this specification are normative and can contain the terms MAY, SHOULD, MUST, MUST NOT, and SHOULD NOT as defined in RFC 2119. Sections 1.5 and 1.9 are also normative but cannot contain those terms. All other sections and examples in this specification are informative.

1.1 Glossary

The following terms are defined in [\[MS-GLOS\]](#):

- authentication**
- authentication level**
- Authentication Service (AS)**
- causality identifier (CID)**
- class factory**
- class identifier (CLSID)**
- computer name**
- domain**
- dynamic endpoint**
- endpoint**
- globally unique identifier (GUID)**
- Interface Definition Language (IDL)**
- Microsoft Interface Definition Language (MIDL)**
- object class**
- object remote procedure call (ORPC)**
- OBJREF**
- opnum**
- remote procedure call (RPC)**
- security identifier (SID)**
- Unicode**
- universally unique identifier (UUID)**
- Windows NT account name**

The following terms are defined in [\[MS-DTCO\]](#):

- distributed transaction**

The following terms are specific to this document:

activity: A synchronization boundary; **ORPC** calls to objects within the boundary are serialized based on their **causality identifiers**.

activity identifier: A **GUID** that identifies an activity.

global partition: The default, required partition on a machine.

partition: A container for a specific configuration of a COM+ **object class**.

partition identifier: A **GUID** that identifies a partition.

transaction: A unit of interaction that guarantees the ACID properties— atomicity, consistency, isolation, and durability—as specified by the [MSDTC Connection Manager: OleTx Transaction Protocol](#) ([MS-DTCO]).

transaction sequence number (TSN): A positive number that identifies a single **transaction** within a **transaction stream**.

transaction stream: An object that supplies a series of transactions, each identified by a monotonically increasing sequence number.

transaction stream ID: A **GUID** that identifies a **transaction stream**.

MAY, SHOULD, MUST, SHOULD NOT, MUST NOT: These terms (in all caps) are used as described in [\[RFC2119\]](#). All statements of optional behavior use either MAY, SHOULD, or SHOULD NOT.

1.2 References

References to Microsoft Open Specifications documentation do not include a publishing year because links are to the latest version of the documents, which are updated frequently. References to other documents include a publishing year when one is available.

A reference marked "(Archived)" means that the reference document was either retired and is no longer being maintained or was replaced with a new document that provides current implementation details. We archive our documents online [\[Windows Protocol\]](#).

1.2.1 Normative References

We conduct frequent surveys of the normative references to assure their continued availability. If you have any issue with finding a normative reference, please contact dochelp@microsoft.com. We will assist you in finding the relevant information.

[C706] The Open Group, "DCE 1.1: Remote Procedure Call", C706, August 1997, <https://www2.opengroup.org/ogsys/catalog/c706>

[MS-DCOM] Microsoft Corporation, "[Distributed Component Object Model \(DCOM\) Remote Protocol](#)".

[MS-DTCO] Microsoft Corporation, "[MSDTC Connection Manager: OleTx Transaction Protocol](#)".

[MS-DTYP] Microsoft Corporation, "[Windows Data Types](#)".

[MS-ERREF] Microsoft Corporation, "[Windows Error Codes](#)".

[MS-NRPC] Microsoft Corporation, "[Netlogon Remote Protocol](#)".

[MS-OAUT] Microsoft Corporation, "[OLE Automation Protocol](#)".

[MS-RPCE] Microsoft Corporation, "[Remote Procedure Call Protocol Extensions](#)".

[RFC2119] Bradner, S., "Key words for use in RFCs to Indicate Requirement Levels", BCP 14, RFC 2119, March 1997, <http://www.rfc-editor.org/rfc/rfc2119.txt>

1.2.2 Informative References

[MS-GLOS] Microsoft Corporation, "[Windows Protocols Master Glossary](#)".

1.3 Overview

The COM+ Protocol extends the [Distributed Component Object Model \(DCOM\) Remote Protocol](#) by providing facilities to add transactions, synchronization, multiple object class configurations, security, and other attributes to distributed object applications. The protocol consists of a set of extensions layered on top of the DCOM Remote Protocol. The following diagram shows the layering of the protocol stack.

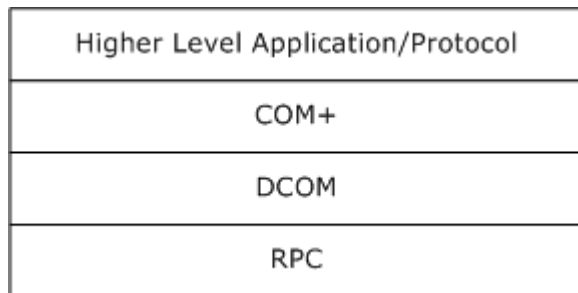


Figure 1: Layering of the protocol stack

1.3.1 Context Properties

The COM+ Protocol operates by passing COM+ specific information in object activations, **ORPC** calls, and as part of marshaled **OBJREFs**, using the context and context property extension mechanisms as specified in [\[MS-DCOM\]](#) section 2.2.21.4. A COM+ object is configured using an implementation-specific mechanism to require none, some, or all of the features described in this specification. These features are implemented by creating the object within a context and associating properties with the context. A context is a collection of attributes or context properties that describes an execution environment. When an object in a context with one or more context properties creates or calls other objects on the network, the protocol specifies mechanisms for those context properties to influence the state of the object activations and ORPC calls.

A context may contain the following context properties:

- The Transaction Context Property (section [1.3.2](#))
- The Activity Context Property (section [1.3.3](#))
- The Security Context Property (section [1.3.4](#))
- The User-Defined Context Property (section [1.3.5](#))

1.3.1.1 Context Properties and Activations

Context properties may flow as part of activation. [\[MS-DCOM\]](#) specifies two ways to accomplish this: the client context and the prototype context passed as part of an **ActivationContextInfoData** structure ([\[MS-DCOM\]](#) section 2.2.22.2.5) within an **Activation Properties BLOB** ([\[MS-DCOM\]](#) section 2.2.22).

1.3.1.1.1 Client Context Within Activations

The client context within the [Activation Properties BLOB](#) ([MS-DCOM] section 2.2.22) represents a set of context properties associated with the client object context, and guides the creation of the server object context.

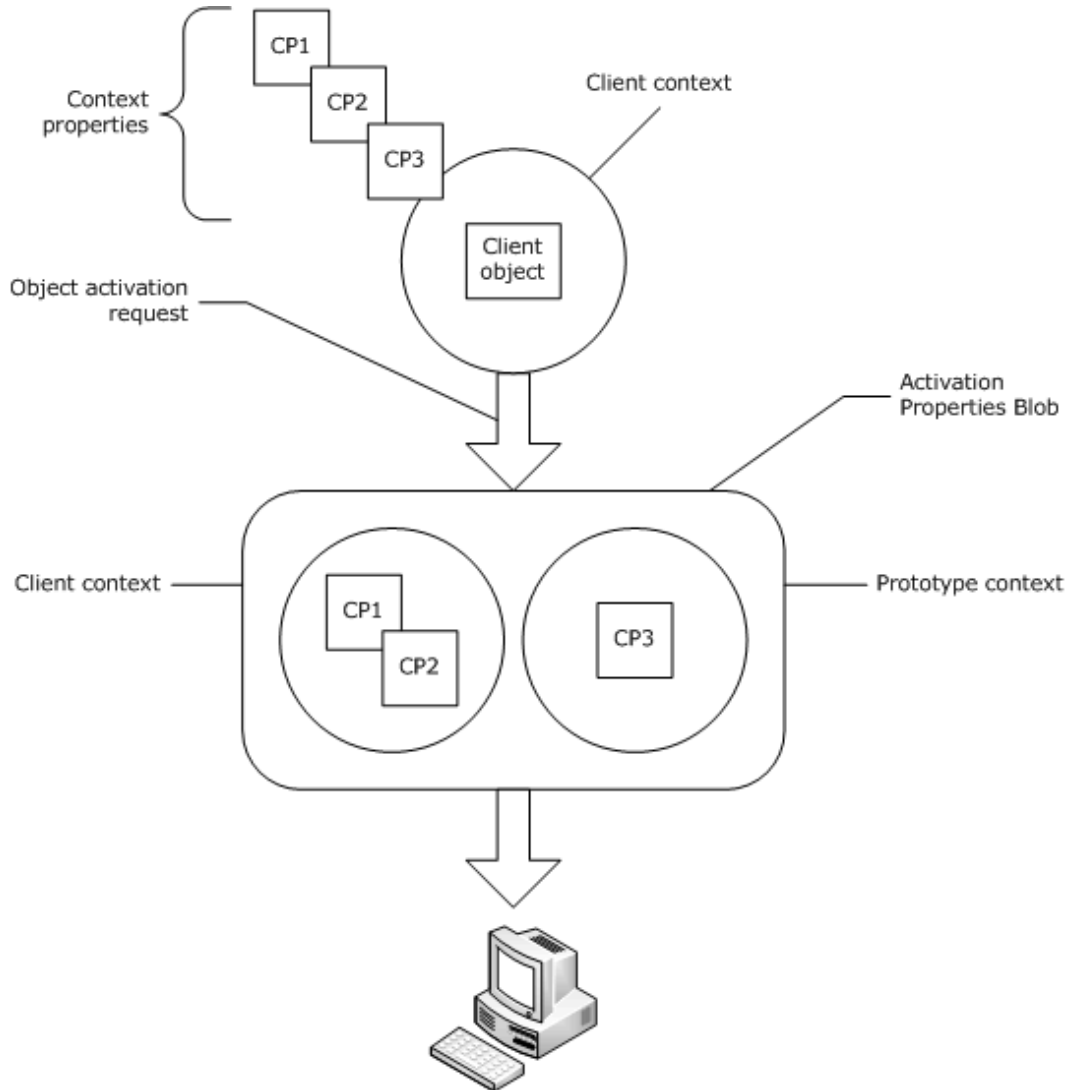
The server may decide to use some, none, or all of the client context properties, depending on the desired result or implementation-specific details.

For example, if the client context contains a [transaction context property \(section 2.2.2.1\)](#), this indicates to the server that the client object is running within a transaction. The server must then decide, in an implementation-specific way, if the server object will run within the same transaction as the client, a new transaction, or no transaction at all.

1.3.1.1.2 Prototype Context Within Activations

The prototype context within the [Activation Properties BLOB](#) ([MS-DCOM] section 2.2.22) represents the set of context properties of the client that the server must add to its object context. While the client context is merely advisory, the prototype context is not. All the prototype context properties must be present among the context properties of the server object.

1.3.1.1.3 Diagram



A client object sending an activation with context properties to a server.

Figure 2: A client object sending an activation with context properties to a server

1.3.1.2 Context Properties and Marshaling

When a server marshals a COM+ object running in a context, the server returns an [OBJREF_EXTENDED](#) instance ([\[MS-DCOM\]](#) section 2.2.18.7). Within an `OBJREF_EXTENDED` instance, the server can include a representation of its context called an envoy context, consisting of envoy context properties. During unmarshaling, a client may use the envoy context properties to configure and influence future client-side behaviors, either in general or specifically with respect to future communication with the unmarshaled reference.

For example, a marshaled transactional COM+ server object returns a transactional envoy context property in an ORPC call, thereby allowing the client to determine whether the client and the server

share the same transaction. If they do not, the client may ignore the transactional envoy context property. If they share the same transaction, the client may send extra information on subsequent ORPC calls to the server, for example, to denote the current **transaction sequence number**, or to send a new transaction if the previous transaction has ended.

1.3.1.2.1 Diagram

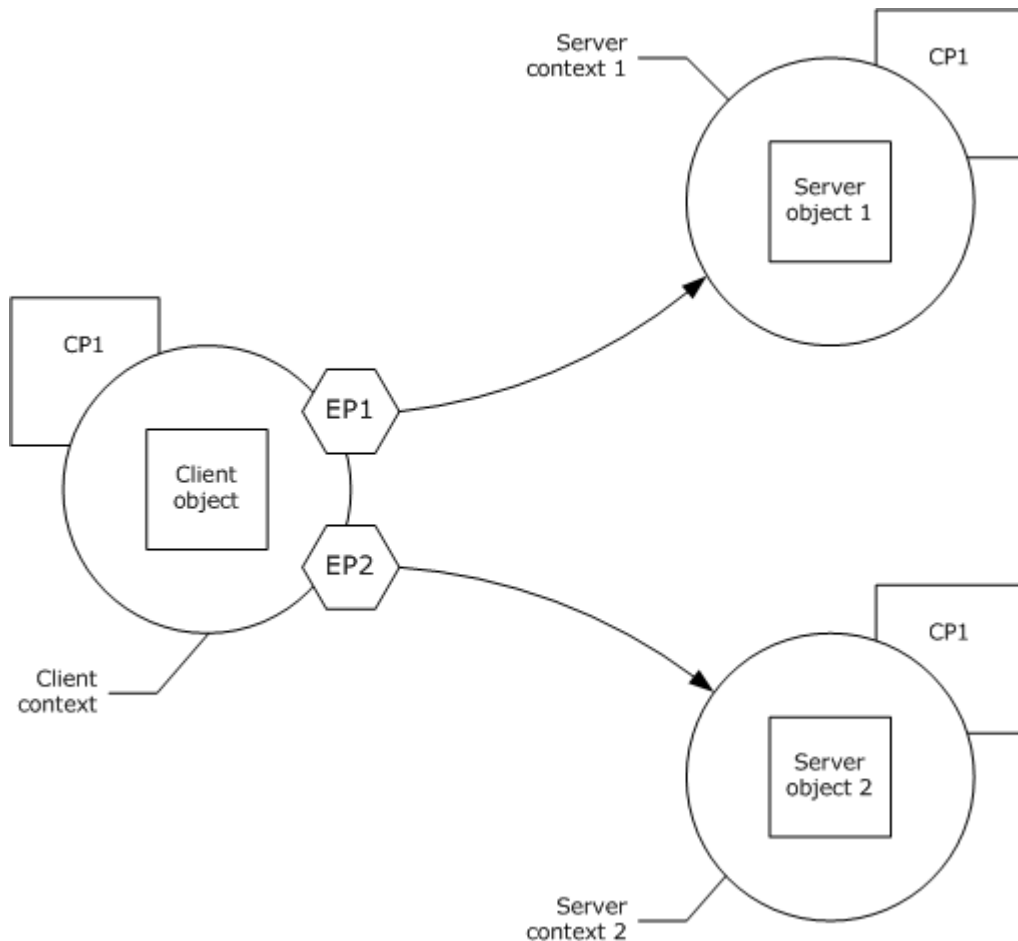


Figure 3: A client object with references to two server objects, each with a reference-specific envoy property (EP1 and EP2) returned from the server during marshaling.

1.3.1.3 Context Properties and ORPC Calls

Context properties may participate in out-of-band communication on ORPC calls. Via the [Context ORPC Extension](#) mechanism ([\[MS-DCOM\]](#) section 2.2.21.4), a client-side context property and a server-side context property can pass information back and forth on ORPC calls. In some cases, such communication is influenced by an envoy context property returned from the server during the marshaling/unmarshaling process. For example, during an ORPC call a transactional COM+ client object may send extra information about the state of the current transaction to a COM+ server object.

1.3.1.3.1 Diagram

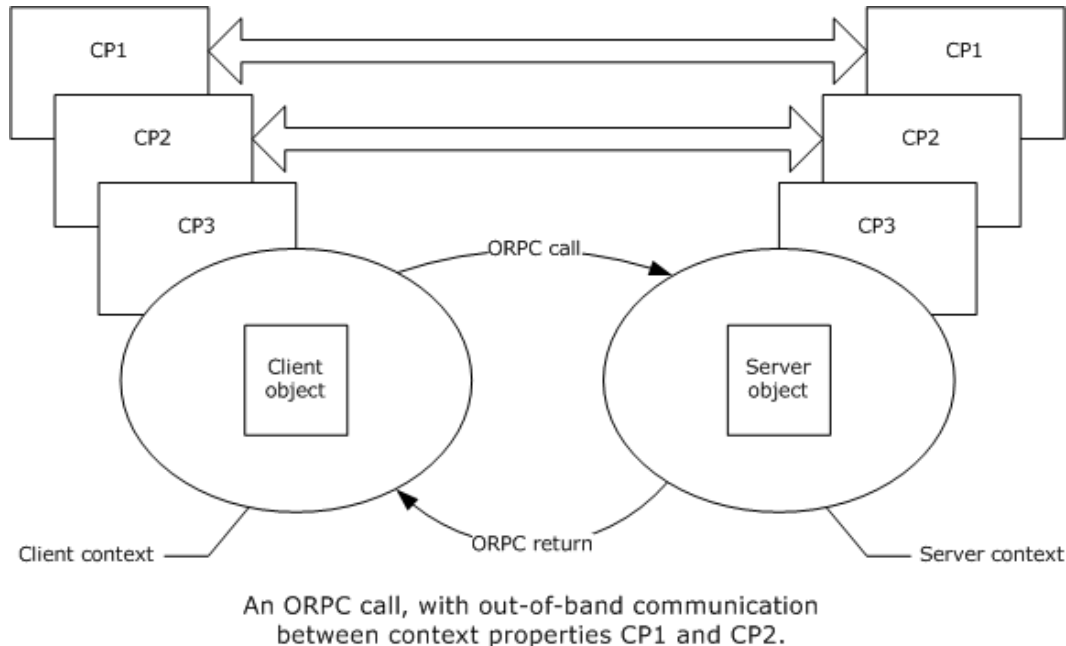


Figure 4: An ORPC call with out-of-band communication between context properties

1.3.2 Transactions

The COM+ Protocol is designed to combine the work of collaborating objects under the aegis of a single **distributed transaction**. The COM+ Protocol itself does not define or implement distributed transaction coordination and resource manager facilities; instead, it relies on the [MSDTC Connection Manager: OleTx Transaction Protocol](#) ([MS-DTCO]) for these operations, and all references to a "transaction" in this specification should be interpreted to mean an [MS-DTCO] transaction. The COM+ Protocol implements transactional semantics for objects by extending the [DCOM Remote Protocol](#) to send transactions and associated information during object activations, in ORPC calls, and within marshaled OBJREF instances.

1.3.2.1 Transaction Stream

A **transaction stream** is an object that supplies a series of transactions, each identified by a monotonically increasing transaction sequence number (TSN). Each transaction stream is uniquely identified by a **GUID** known as a **transaction stream ID**. The TSN is used to synchronize the transaction participants to the current active transaction. A new transaction in the stream may not be initiated until the previous transaction has completed.

Transaction streams make it possible for sets of distributed objects to collaborate on sequential units of work.

1.3.2.2 Root Transaction Object

The root transaction object is the object for which the initial transaction is created. There can only be one root transaction object within a transaction. The root transaction object has an associated transaction stream, which is responsible for supplying a series of transactions to the root object, as well as to all non-root objects, as required.

1.3.2.3 Non-root Transaction Object

Non-root transaction objects are objects created by or downstream from the root transaction object, and those that share the root transaction object's transaction. There can be multiple non-root objects within a transaction. A non-root transaction object communicates with the root transaction object and its associated transaction stream to ensure that each ORPC call to the non-root transaction object is always executed using a valid and current transaction.

After a transaction completes, the non-root transaction object retrieves the next transaction either by communicating with the transaction stream, or by receiving it directly as part of an ORPC call from another object running within the transaction.

1.3.2.4 Diagram

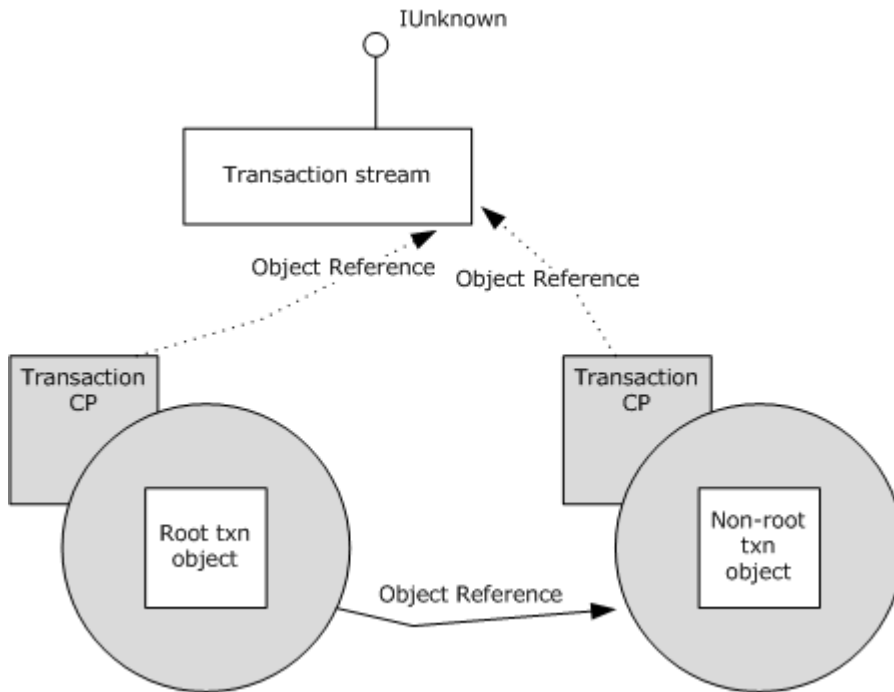


Figure 5: A root and non-root transaction object, each with a transaction context property holding a reference to the transaction stream

1.3.2.5 MS-DTC Transaction Propagation Methods

The [MSDTC Connection Manager: OleTx Transaction Protocol](#) specifies two methods for propagating a transaction from one machine to another. For historical reasons, the COM+ Protocol accommodates [MS-DTCO] transaction manager implementations on client and server machines that support either or both methods. For more information, see section [2.2.6.1](#) and [\[MSDN-DTC\]](#).

1.3.2.6 Transaction Lifetime

Transactions in the COM+ Protocol are started only by the root transaction object. Only the root transaction object can commit a transaction. A transaction may be canceled by any participant in the transaction.

1.3.3 Activities

An **activity** is a synchronization boundary; ORPC calls to objects within the boundary are serialized based on the DCOM causality of the currently executing ORPC call. An activity is uniquely identified by a GUID known as an **activity ID**. If an object in an activity is currently executing an incoming ORPC call, incoming ORPC calls with different **causality identifiers** (CIDs, as specified in [\[MS-DCOM\]](#) section 2.2.6) to other objects within the same activity are blocked for a specified period of time. If the time-out expires before the incoming ORPC call is allowed to enter the activity, the call is rejected and an error is returned to the client.

1.3.4 Security

The protocol offers the capability to send a collection of security identities and other security information along an ORPC call chain; each element in the collection represents a caller in the ORPC call chain. At any point in the call chain, an object may query, in an implementation-specific manner, the following security attributes associated with each upstream caller:

- The caller's identity (specified by a security identifier (SID) or Windows NT operating system account name).
- The authentication service of the call.
- The authentication level of the call.
- The impersonation level of the call.

In addition, an object in the call chain may also query the minimum **authentication level** used across the entire call chain.

The protocol uses the security context property to send security information in ORPC calls as described in section [1.3.1.3](#). When an object is marshaled, the protocol uses the [security envoy property \(section 2.2.4.2\)](#) as described in section [1.3.1.2](#) to send information about the **domain** and computer of the object. The protocol uses this information to translate **SIDs** to **Windows NT account names** when sending the security identity of the caller in cross-computer and cross-domain ORPC calls.

1.3.5 User-Defined Properties

User-defined properties are name/value pairs that are part of an object's context. These properties are supplied and consumed by higher-level protocols or applications. The COM+ Protocol supports the string value type and the OBJREF value type. The protocol sends these properties as part of both the client and prototype contexts during object activations.

1.3.6 Partitions

Partitions are used to support the side-by-side installation of multiple configurations of a COM+ object class. Each partition is uniquely identified by a GUID known as the **partition ID**. An object class may have several versions of its configuration installed on a server, one per partition. A partition must contain at most one version of an object class.

Every machine has at minimum one partition, the **global partition**, which contains the default configuration for every object class on the machine. The global partition serves as the default partition when no criteria, such as a client-specified partition, exist to choose any other partition.

The partition of an object class is determined during the object activation request; it may be chosen automatically by an implementation on behalf of the activating client, or the activating client may specify a partition ID as part of the activation request.

For historical reasons, the client's partition information is not sent across the network in the form of a context property; instead, it is sent as part of the base DCOM protocol. See the **guidPartition** field of the [SpecialPropertiesData](#) structure, as specified in [\[MS-DCOM\]](#) section 2.2.22.2.2.

1.4 Relationship to Other Protocols

This protocol is built on top of the [DCOM Remote Protocol](#) ([MS-DCOM]). This protocol requires the [MSDTC Connection Manager: OleTx Transaction Protocol](#) ([MS-DTCO]) for implementing the transactional features described in this specification.

1.5 Prerequisites/Preconditions

This protocol requires that both client and server possess implementations of the [DCOM Remote Protocol](#). If the transactional features of this protocol are to be used, both client and server must possess implementations of the [MSDTC Connection Manager: OleTx Transaction Protocol](#).

1.6 Applicability Statement

This protocol is useful and appropriate when a distributed, object-based architecture with transactions, synchronization, security, and side-by-side installation of multiple configurations of an object class is required.

1.7 Versioning and Capability Negotiation

This document covers versioning issues in the following area:

- Capability Negotiation: The protocol performs explicit capability negotiation, as follows:
 - By use of the [CONVERSION](#) structure ([\[MS-DCOM\]](#) section 2.2.11) as specified in section [2.2.5](#) and section [3.12.4](#).
 - By use of the [MS-DTC Capabilities](#) (section [2.2.6.1](#)) as specified in section [2.2.2.1.2](#) and section [2.2.4.1](#).

1.8 Vendor-Extensible Fields

This protocol uses [HRESULT](#)s as specified in [\[MS-ERREF\]](#) section 2.1. Vendors can define their own **HRESULT** values, provided that the C bit (0x20000000) is set for each vendor-specific value.

1.9 Standards Assignments

The following is a table of well-known GUIDs in the COM+ Protocol.

Parameter	Value	Reference
Transaction Context Property identifier, Transaction ORPC Extensions identifier, and Transaction Envoy Property identifier (guidTransactionProperty)	{ecabaeb1-7f19-11d2-978e-0000f8757e2a}	[C706] section A.2.5
Activity Context Property identifier	{ecabaeb4-7f19-11d2-	[C706]

Parameter	Value	Reference
(guidActivityProperty)	978e-0000f8757e2a}	section A.2.5
Security Envoy Property identifier and Security ORPC Extension identifier (guidSecurityProperty)	{ecabaeb8-7f19-11d2-978e-0000f8757e2a}	[C706] section A.2.5
User-Defined Context Property identifier (guidUserPropertiesProperty)	{ecabaeb6-7f19-11d2-978e-0000f8757e2a}	[C706] section A.2.5
OBJREF_CUSTOM unmarshaller CLSID for Class Factory Wrapper (CLSID_CFW)	{ecabafc0-7f19-11d2-978e-0000f8757e2a}	[C706] section A.2.5
OBJREF_CUSTOM unmarshaller CLSID for User-Defined Context Property (CLSID_UserContextProperty)	{ecabafb3-7f19-11d2-978e-0000f8757e2a}	[C706] section A.2.5
OBJREF_CUSTOM unmarshaller CLSID for Transaction Context Property (CLSID_TransactionUnmarshal)	{ecabafac-7f19-11d2-978e-0000f8757e2a}	[C706] section A.2.5
OBJREF_CUSTOM unmarshaller CLSID for Activity Context Property (CLSID_ActivityUnmarshal)	{ecabafaa-7f19-11d2-978e-0000f8757e2a}	[C706] section A.2.5
Unmarshaling CLSID for the Security Envoy Property (CLSID_SecurityEnvoy)	{ecabafab-7f19-11d2-978e-0000f8757e2a}	[C706] section A.2.5
Unmarshaling CLSID for the Transaction Envoy Property (CLSID_TransactionEnvoy)	{ecabafad-7f19-11d2-978e-0000f8757e2a}	[C706] section A.2.5
RPC interface UUID for ITransactionStream (IID_ITransactionStream)	{97199110-DB2E-11d1-A251-0000F805CA53}	[C706] section A.2.5

2 Messages

All structures are defined in the **IDL** syntax and are marshaled as per [\[C706\]](#) part 3. The IDL is specified in [Appendix A](#).

Field types in packet diagrams are specified by the packet diagram and the field descriptions. All integer-based fields in packet diagrams are marshaled using little-endian byte ordering unless otherwise specified.

This protocol references commonly used data types as defined in [\[MS-DTYP\]](#).

Unless otherwise qualified, instances of **GUID** in sections [2](#) and [3](#) refer to [\[MS-DTYP\]](#) section 2.3.4.

2.1 Transport

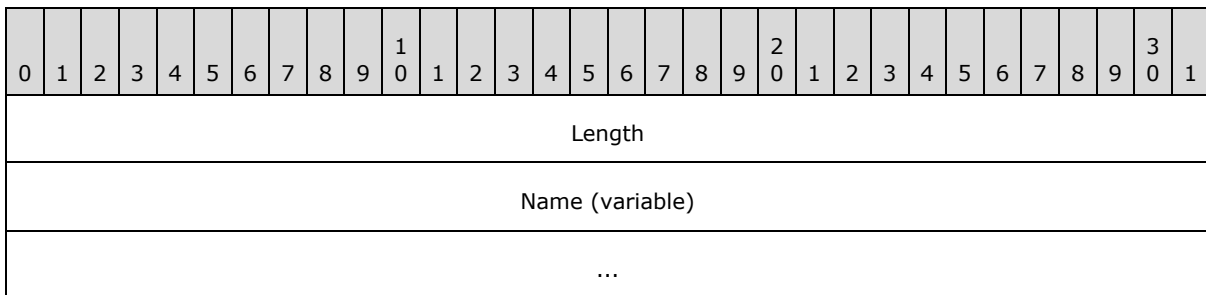
This protocol uses RPC **dynamic endpoints** as specified in [\[C706\]](#) part 4.

2.2 Common Data Types

In addition to RPC base types and definitions specified in [\[C706\]](#) and [\[MS-DTYP\]](#), additional data types are specified in this section.

2.2.1 LengthPrefixedName

The LengthPrefixedName type specifies an array of **Unicode** characters prefixed by the array length, in characters.



Length (4 bytes): An unsigned long that MUST contain the number of Unicode characters in **Name**, and MUST NOT be zero.

Name (variable): A Unicode string; the string SHOULD NOT end in a NULL terminator.

2.2.2 Activation Context Properties

Activation context properties are included as part of the client and/or prototype contexts in a DCOM [Activation Properties BLOB](#) ([\[MS-DCOM\]](#) section 2.2.22).

The following table shows which context properties should be located within either the client or prototype contexts.

Context property	In client or prototype context?
Transaction (section 2.2.2.1)	If present, this property MUST be in client context only.

Context property	In client or prototype context?
Activity (section 2.2.2.2)	If present, this property MUST be in client context only.
User-defined (section 2.2.2.3)	If present, this property MUST be in both client and prototype contexts.

The user context property, if present, MUST be sent within both the client and prototype contexts, and both copies MUST be identical.

2.2.2.1 Transaction Context Property

To indicate to the server that the client is running within a transaction, the client MUST include a transaction context property as part of the client context in an object activation request.

The **policyId** field of the [PROPMARSHALHEADER](#) instance ([\[MS-DCOM\]](#) section 2.2.20.1) for the transaction context property MUST be set to `guidTransactionProperty`, as specified in section [1.9](#). The **CLSID** field of the [PROPMARSHALHEADER](#) instance ([\[MS-DCOM\]](#) section 2.2.20.1) for the transaction context property MUST be set to `GUID_NULL`. The transaction context property MUST be marshaled using the [OBJREF_CUSTOM](#) format ([\[MS-DCOM\]](#) section 2.2.18.6), and the **CLSID** field of the [OBJREF_CUSTOM](#) instance MUST be set to `CLSID_TransactionUnmarshal`, as specified in section [1.9](#).

The format of the [OBJREF_CUSTOM.pObjectData](#) buffer for `CLSID_TransactionUnmarshal` MUST be specified as follows.

2.2.2.1.1 TransactionContextPropertyHeader

The `TransactionContextPropertyHeader` structure is the common header for all variants of the [Transaction Context Property](#).

0	1	2	3	4	5	6	7	8	9	10	11	12	13	14	15	16	17	18	19	20	21	22	23	24	25	26	27	28	29	30	31
MaxVersion																MinVersion															
Variant																StreamID															
...																															
...																															
...																															
...																StreamVariant															

MaxVersion (2 bytes): The major version of this marshaled format. MUST be set to `0x0001` or `0x0002`. A value of `0x0002` indicates that an **IsolationLevel** field is present at the end of the message (see sections [2.2.2.1.2](#) and [2.2.2.1.3](#)); a value of `0x0001` indicates that no **IsolationLevel** is present.

MinVersion (2 bytes): The minor version of this marshaled format. MUST be set to `0x0001`.

Variant (2 bytes): This MUST be set to either 0x0000 or 0x0002, and MUST be ignored by the server on receipt.

StreamID (16 bytes): A GUID identifying the controlling transaction stream.

StreamVariant (2 bytes): A value identifying the larger structure that contains the TransactionContextPropertyHeader. It MUST be set to one of the following values:

Value	Meaning
StreamVariant 0x0001	The TransactionContextPropertyHeader structure MUST be contained as part of a TransactionStream (section 2.2.2.1.2) structure.
TransactionVariant 0x0002	The TransactionContextPropertyHeader structure MUST be contained as part of a TransactionBuffer (section 2.2.2.1.3) structure.

2.2.2.1.2 TransactionStream

The TransactionStream structure is used when the client passes a reference to the client's [ITransactionStream](#) interface and conveys information about the capabilities of the DTCO transaction manager implementation on the client.

0	1	2	3	4	5	6	7	8	9	10	11	12	13	14	15	16	17	18	19	20	21	22	23	24	25	26	27	28	29	30	31
Header																															
...																															
...																															
...																															
...																															
...																															
DtcCapabilities																MarshalSize															
...																TransactionStream (variable)															
...																															
...																IsolationLevel (optional)															
...																															

Header (24 bytes): A [TransactionContextPropertyHeader](#); the **StreamVariant** field of the structure MUST be set to 0x0001.

DtcCapabilities (2 bytes): A bitwise OR of one or more of the values defined in section [2.2.6.1](#) indicating the capabilities of the client's DTCO transaction manager.

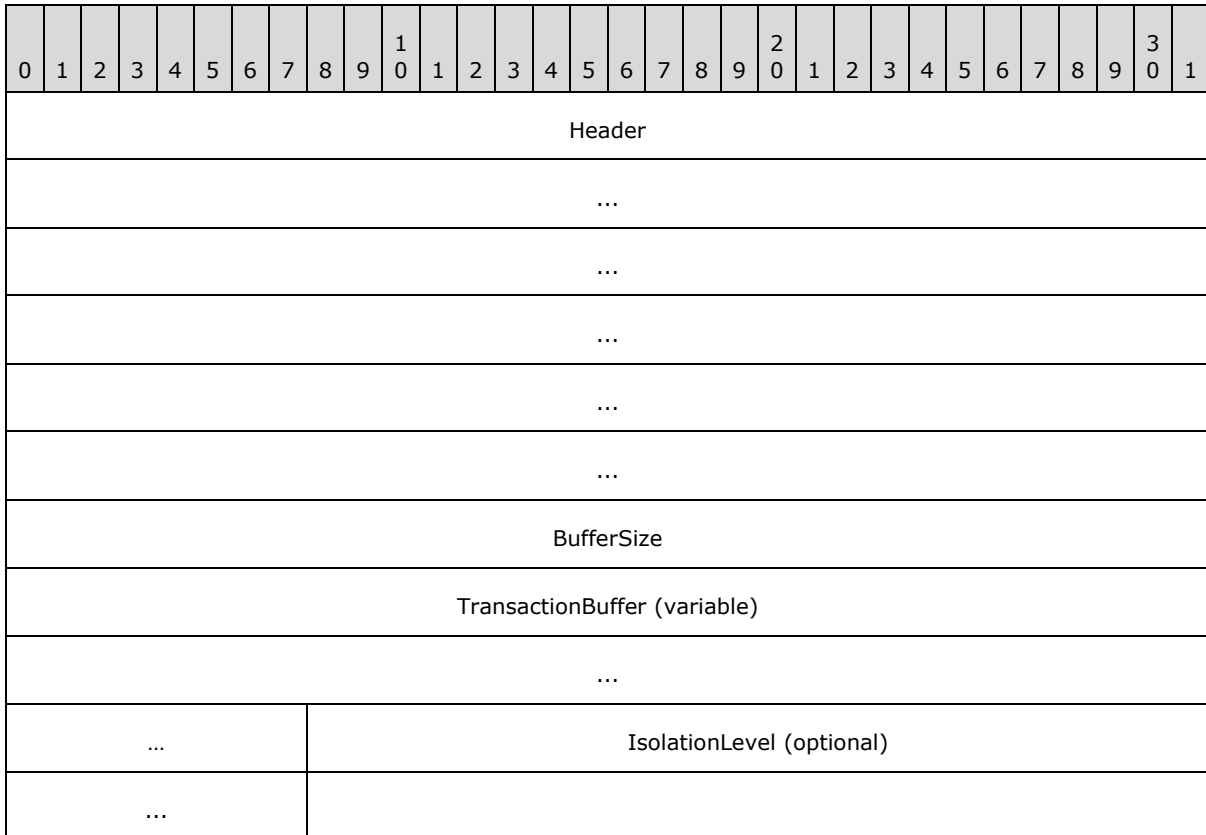
MarshalSize (4 bytes): The (unsigned) size in bytes of **TransactionStream**.

TransactionStream (variable): An OBJREF instance containing a marshaled **ITransactionStream** interface instance.

IsolationLevel (optional) (4 bytes): The [Transaction Isolation Level \(section 2.2.6.2\)](#) used by the COM+ client. This field **MUST** be present if the **MaxVersion** field of the header is 0x0002; otherwise, this field **MUST NOT** be present.

2.2.2.1.3 TransactionBuffer

The TransactionBuffer structure is used when the client passes the currently active transaction to the server.



Header (24 bytes): A [TransactionContextPropertyHeader](#) structure. The **StreamVariant** field of the structure **MUST** be set to 0x0002.

BufferSize (4 bytes): The unsigned size, in bytes, of **TransactionBuffer**.

TransactionBuffer (variable): An array of bytes that **MUST** contain a [Propagation Token](#) structure as specified in [\[MS-DTCO\]](#) section 2.2.5.4.

IsolationLevel (optional) (4 bytes): The [Transaction Isolation Level \(section 2.2.6.2\)](#) used by the COM+ client. This field **MUST** be present if the **MaxVersion** field of header is 0x0002; otherwise, this field **MUST NOT** be present.

2.2.2.2 Activity Context Property

To indicate to the server that the client is running within an activity, the client **MUST** include an activity context property as part of the client context in an object activation request.

The **policyId** field of the [PROPMARSHALHEADER](#) instance ([\[MS-DCOM\]](#) section 2.2.20.1) for the activity context property **MUST** be set to `guidActivityProperty`, as specified in section 1.9. The **CLSIDs** field of the [PROPMARSHALHEADER](#) instance ([\[MS-DCOM\]](#) section 2.2.20.1) for the activity context property **MUST** be set to `GUID_NULL`. The activity context property **MUST** be marshaled using the [OBJREF_CUSTOM](#) format ([\[MS-DCOM\]](#) section 2.2.18.6), and the **CLSIDs** field of the [OBJREF_CUSTOM](#) instance **MUST** be set to `CLSID_ActivityUnmarshal`, as specified in section 1.9.

The format of the `OBJREF_CUSTOM.pObjectData` buffer for `CLSID_ActivityUnmarshal` **MUST** be specified as follows.

0	1	2	3	4	5	6	7	8	9	10	11	12	13	14	15	16	17	18	19	20	21	22	23	24	25	26	27	28	29	30	31
MaxVersion																MinVersion															
ActivityID																															
...																															
...																															
...																															
Timeout																															

MaxVersion (2 bytes): The major version number for this activity context property format. This field **MUST** be set to 0x0001.

MinVersion (2 bytes): The minor version number for this activity context property format. This field **MUST** be set to 0x0001.

ActivityID (16 bytes): A GUID that **MUST** specify the activity ID.

Timeout (4 bytes): An unsigned long that **MUST** specify the activity time-out in milliseconds. A value of 0xFFFFFFFF **MUST** be interpreted to specify an INFINITE time-out.

2.2.2.3 User-Defined Context Property

The user-defined context property, if present, **MUST** be included as part of both the client and prototype contexts during activation requests. This context property contains a logical set of name/value pairs.

The **policyId** field of the [PROPMARSHALHEADER](#) instance ([\[MS-DCOM\]](#) section 2.2.20.1) for the user-defined context property **MUST** be set to `guidUserPropertiesProperty`, as specified in section

[1.9](#). The **CLSID** field of the PROPMARSHALHEADER instance ([\[MS-DCOM\]](#) section 2.2.20.1) for the **activity context property** MUST be set to GUID_NULL. The user-defined context property MUST be marshaled using the **OBJREF_CUSTOM** format ([\[MS-DCOM\]](#) section 2.2.18.6), and the **CLSID** field of the OBJREF_CUSTOM instance MUST be set to CLSID_UserContextProperty, as specified in section [1.9](#).

The format of the OBJREF_CUSTOM.pObjectData buffer for CLSID_UserContextProperty MUST be specified as follows:

0	1	2	3	4	5	6	7	8	9	10	11	12	13	14	15	16	17	18	19	20	21	22	23	24	25	26	27	28	29	30	31
MaxVersion																MinVersion															
PropCount																Properties (variable)															
...																															

MaxVersion (2 bytes): The major version number for this [UserProperty \(section 2.2.2.3.1\)](#) format. This field MUST be set to 0x0001.

MinVersion (2 bytes): The minor version number for this UserProperty format. This field MUST be set to 0x0001.

PropCount (2 bytes): An unsigned short that MUST specify the number of elements in the **Properties** array.

Properties (variable): An array of UserProperty structures.

2.2.2.3.1 UserProperty

The UserProperty structure is used to define a single name/value pair.

0	1	2	3	4	5	6	7	8	9	10	11	12	13	14	15	16	17	18	19	20	21	22	23	24	25	26	27	28	29	30	31
MaxVersion																MinVersion															
Name (variable)																															
...																															
vt																unused															
...																															
...																															
...																															

Value (variable)
...

MaxVersion (2 bytes): The major version number for this UserProperty format; this field MUST be set to 0x0001.

MinVersion (2 bytes): The minor version number for this UserProperty format; this field MUST be set to 0x0001.

Name (variable): A [LengthPrefixedName \(section 2.2.1\)](#) containing the name of the UserProperty.

vt (2 bytes): The type of data contained in **Value**. It MUST be set to one of the following values:

vt value	Meaning
0x0008	A LengthPrefixedName.
0x0009	An OBJREF ([MS-DCOM] section 2.2.18) with an iid field that MUST be set to IID_IUnknown ([MS-DCOM] section 1.9).
0x000D	An OBJREF ([MS-DCOM] section 2.2.18) with an iid field that MUST be set to IID_IDispatch ([MS-OAUT] section 1.9).

unused (14 bytes): SHOULD be set to zero, and MUST be ignored upon receipt. [<1>](#)

Value (variable): MUST contain the data for this name/value pair, as specified by the **vt** field.

2.2.3 Context ORPC Extensions

Context ORPC extensions are specified in [\[MS-DCOM\] section 2.2.21.4](#). These extension formats are passed as out-of-band data on ORPC calls. Each individual extension is identified by a "**policyID**" of its corresponding [EntryHeader \(\[MS-DCOM\] section 2.2.21.5\)](#). A Context ORPC extension must be contained in the **PolicyData** array element ([\[MS-DCOM\] section 2.2.21.4](#)) corresponding to the [EntryHeader](#) array element ([\[MS-DCOM\] section 2.2.21.5](#)) that contains the **policyID** of the Context ORPC extension.

2.2.3.1 Transaction ORPC Extensions

These extensions are used to coordinate the state of a transaction in use by both the client and the server.

The **policyID** field of the [EntryHeader](#) for this extension MUST be set to [guidTransactionProperty \(section 1.9\)](#).

2.2.3.1.1 Transaction ORPC Call Extensions

These extensions are sent by a client in order to inform the server of the current transaction state, and to request that other transaction-related data be returned by the server within the same call.

2.2.3.1.1.1 TransactionPropCallHeader

The TransactionPropCallHeader structure is used to pass the TSN of the current transaction to the server.

0	1	2	3	4	5	6	7	8	9	10	11	12	13	14	15	16	17	18	19	20	21	22	23	24	25	26	27	28	29	30	31
m_usMaxVer																m_usMinVer															
m_ulSeq																															
m_usFlags																m_usVariant															

m_usMaxVer (2 bytes): The major version number for this TransactionPropCallHeader format. This field MUST be set to 0x0001.

m_usMinVer (2 bytes): The minor version number for this TransactionPropCallHeader format; this field MUST be set to 0x0001.

m_ulSeq (4 bytes): The sequence number of the current transaction.

m_usFlags (2 bytes): This MUST contain one of the following values:

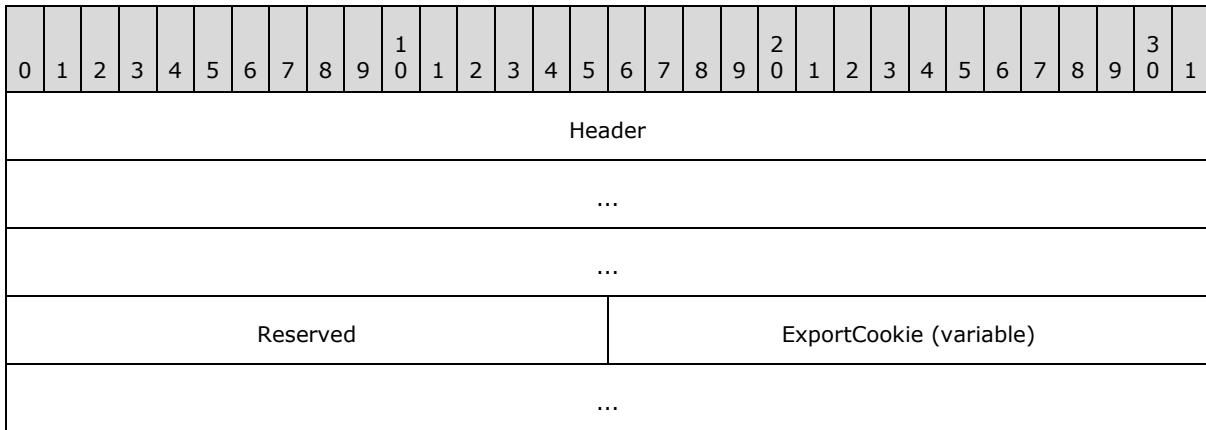
Value	Meaning
TransactionPropCallFlag_None 0x0000	A request that the server MUST return a TransactionPropRetHeader structure with the m_usVariant field set to TransactionPropCall_None, as specified in section 2.2.3.1.2.1 .
TransactionPropCallFlag_NeedWhereabouts 0x0001	A request that the server MUST return a TransactionPropRetHeader structure with the m_usVariant field set to TransactionPropRet_Whereabouts, as specified in section 2.2.3.1.2.1 .

m_usVariant (2 bytes): This MUST contain one of the following values:

Value	Meaning
TransactionPropCall_None 0x0001	The TransactionPropCallHeader structure MUST NOT be contained within any larger structures.
TransactionPropCall_ExportCookie 0x0002	The TransactionPropCallHeader structure MUST be contained as part of the TransactionPropCallExportCookie (section 2.2.3.1.1.2) structure.
TransactionPropCall_TransmitterBuffer 0x0003	The TransactionPropCallHeader structure MUST be contained as part of the TransactionPropCallTransmitterBuffer (section 2.2.3.1.1.3) structure.

2.2.3.1.1.2 TransactionPropCallExportCookie

The TransactionPropCallExportCookie structure is used to send the currently active transaction to the server, using the [STxInfo](#) format. For more details, see [\[MS-DTCO\]](#).



Header (12 bytes): A [TransactionPropCallHeader](#). The **m_usVariant** field of the structure MUST be set to TransactionPropCall_ExportCookie (0x0002).

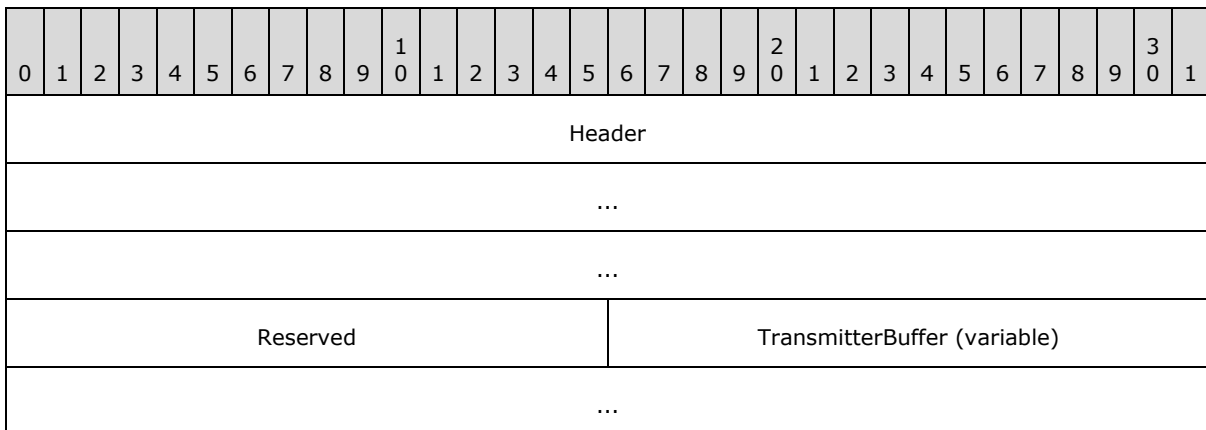
Reserved (2 bytes): This can be set to any arbitrary value and MUST be ignored on receipt.

ExportCookie (variable): An STxInfo structure as specified in [\[MS-DTCO\]](#) section 2.2.5.10. The size of the structure is indicated as follows:

Obtain the value of the **cbEHBuffer** field from the [EntryHeader](#) ([\[MS-DCOM\]](#) section 2.2.21.5) corresponding to the [Transaction ORPC Call Extensions \(section 2.2.3.1.1\)](#). Subtract the sum of the size of the TransactionPropCallHeader structure and the size of the **cbExportCookie field** in the TransactionPropCallExportCookie structure from the value of the **cbEHBuffer** field. The size of the STxInfo structure is the result.

2.2.3.1.1.3 TransactionPropCallTransmitterBuffer

The TransactionPropCallTransmitterBuffer structure is used to send the currently active transaction to the server, using the [Propagation Token](#) format; see [\[MS-DTCO\]](#) section 2.2.5.4 for more details.



Header (12 bytes): A [TransactionPropCallHeader](#). The **m_usVariant** field of the structure MUST be set to TransactionPropCall_TransmitterBuffer (0x0003).

Reserved (2 bytes): This can be set to any arbitrary value and MUST be ignored on receipt.

TransmitterBuffer (variable): A Propagation Token structure as specified in [\[MS-DTCO\]](#) section 2.2.5.4. The size of the array is indicated as follows:

Obtain the value of the **cbEHBuffer** field from the [EntryHeader](#) ([\[MS-DCOM\]](#) section 2.2.21.5) corresponding to the [Transaction ORPC Call Extensions \(section 2.2.3.1.1\)](#). Subtract the sum of the size of the [TransactionPropCallHeader](#) (section 2.2.3.1.1.1) structure and the size of the **cbTransmitterBuffer** field in the [TransactionPropCallTransmitterBuffer](#) structure from the value of the **cbEHBuffer** field. The size of the Propagation Token structure is the result.

2.2.3.1.2 Transaction ORPC Return Extensions

These extensions are returned in the ORPC response by a server in response to one of the call extensions specified in section [2.2.3.1](#).

The **policyID** field of the [EntryHeader](#) for these extensions MUST be set to [guidTransactionProperty \(section 1.9\)](#).

2.2.3.1.2.1 TransactionPropRetHeader

The server uses the [TransactionPropRetHeader](#) structure to communicate transaction status, and optionally to return additional data that may advise the client to cancel the current transaction or to stop sending further information about it.

0	1	2	3	4	5	6	7	8	9	10	11	12	13	14	15	16	17	18	19	20	21	22	23	24	25	26	27	28	29	30	31
m_usMaxVer																m_usMinVer															
m_usFlags																m_usVariant															

m_usMaxVer (2 bytes): The major version number for this [TransactionPropRetHeader](#) format; this field MUST be set to 0x0001.

m_usMinVer (2 bytes): The minor version number for this [TransactionPropRetHeader](#) format; this field MUST be set to 0x0001.

m_usFlags (2 bytes): This MUST contain 0x0000 or the bitwise OR of one or more of the following flags:

Value	Meaning
TransactionPropRetFlag_Abort 0x0001	The client MUST cancel the transaction.
TransactionPropRetFlag_DontSend 0x0002	The client SHOULD NOT send the currently active transaction (for example, either as a TransactionPropCallExportCookie (section 2.2.3.1.1.2) or as a TransactionPropCallTransmitterBuffer (section 2.2.3.1.1.3)) to

Value	Meaning
	the server again for the life of the transaction.

m_usVariant (2 bytes): This MUST be one of the following values:

Value	Meaning
TransactionPropRet_None 0x0000	The TransactionPropRetHeader structure MUST NOT be contained within any larger structures.
TransactionPropRet_Whereabouts 0x0001	The TransactionPropRetHeader structure MUST be contained as part of TransactionPropRetWhereabouts (section 2.2.3.1.2.2) .

2.2.3.1.2.2 TransactionPropRetWhereabouts

The TransactionPropRetWhereabouts structure is used by the server to return additional data and to communicate transaction status to the client.

0	1	2	3	4	5	6	7	8	9	10	11	12	13	14	15	16	17	18	19	20	21	22	23	24	25	26	27	28	29	30	31
Header																															
...																															
Reserved																Whereabouts (variable)															
...																															

Header (8 bytes): A [TransactionPropRetHeader \(section 2.2.3.1.2.1\)](#). The **m_usVariant** field of the structure MUST be set to TransactionPropRet_Whereabouts (0x1).

Reserved (2 bytes): This can be set to any arbitrary value and MUST be ignored on receipt.

Whereabouts (variable): An [SWhereabouts \(section 2.2.5.11\)](#) structure as specified in [\[MS-DTCO\]](#) section 2.2.5.11. The size of the array is indicated as follows:

Obtain the value of the **cbEHBuffer** field from the [EntryHeader](#), [\[MS-DCOM\]](#) section 2.2.21.5, corresponding to the [Transaction ORPC Return Extensions \(section 2.2.3.1.2\)](#). Subtract the sum of the size of the TransactionPropRetHeader structure and the size of the **cbWhereabouts** field in the TransactionPropRetWhereabouts structure from the value of the **cbEHBuffer** field. The size of the SWhereabouts structure is the result.

2.2.3.2 Security ORPC Extension

The Security ORPC Extension sends COM+ security information as out-of-band data on ORPC calls between two COM+ objects. The security information provides a record of the chain of caller identities and other security attributes within a series of ORPC calls.

The [Security ORPC Extension](#) structure MUST contain an array of [Security Property Collection \(section 2.2.3.2.3\)](#) structures. Each Security Property Collection structure in turn MUST contain an

array of [Security Property \(section 2.2.3.2.1\)](#) structures. Each Security Property structure MUST specify a [Security Property Type \(section 2.2.3.2.1.1\)](#).

The **policyID** field of the [EntryHeader \(\[MS-DCOM\] section 2.2.21.5\)](#) of the Security ORPC Extension MUST be set to [guidSecurityProperty \(section 1.9\)](#).

2.2.3.2.1 Security Property

The Security Property structure specifies a security property sent by the [security ORPC extension](#).

0	1	2	3	4	5	6	7	8	9	10	11	12	13	14	15	16	17	18	19	20	21	22	23	24	25	26	27	28	29	30	31
PropertyType																Size															
Data (variable)																															
...																															

PropertyType (2 bytes): An unsigned short that MUST contain one of the values specified in the Type column in section [2.2.3.2.1.1](#).

Size (2 bytes): An unsigned short that MUST contain the size of the **Data** array as specified in section [2.2.3.2.1.1](#).

Data (variable): An array of bytes that MUST contain a security property value as specified in section [2.2.3.2.1.1](#).

2.2.3.2.1.1 Security Property Types

The following table lists the valid Security Property Types for the PropertyType field of the Security Property structure. See [Security Property \(section 2.2.3.2.1\)](#).

Type	Size field of Security Property	Data field of Security Property	Notes
0x0b01 or 0x0b06	MUST be set to the number of bytes in the Data field rounded to a multiple of 4.	MUST be an array of bytes specifying the security identifier (SID) of the caller. The array MUST be padded to a multiple of 4.	If the value is 0x0b01, the Data field MUST contain a SID obtained by authenticating the caller using DCOM/RPC authentication mechanisms. If the value is 0x0b06, the Data field MUST contain a SID supplied by an application or a higher-level protocol. The collectionType field of the security property collection header (section 2.2.3.2.2) MUST be set to 0x0a02.
0x0b02 or 0x0b07	MUST be set to the number of bytes in the Data	MUST be an array of Unicode characters that specifies the Windows NT account name of the	If the value is 0x0b02, the Data field MUST contain a Windows NT account name obtained by

Type	Size field of Security Property	Data field of Security Property	Notes
	field rounded to a multiple of 4.	caller. The array MUST be terminated with the NULL Unicode character and MUST be padded to a multiple of 4.	authenticating the caller using DCOM/RPC authentication mechanisms. If the value is 0x0b07, the Data field MUST contain a Windows NT account name supplied by an application or a higher-level protocol. The collectionType field of the security property collection header (section 2.2.3.2.2) MUST be set to 0x0a02.
0x0b03	MUST be set to 0x0004.	MUST be a DWORD that MUST contain the RPC authentication service value used in the ORPC call. For more details on RPC authentication services, see [MS-RPCE] section 2.2.1.1.8.	The collectionType field of the security property collection header (section 2.2.3.2.2) MUST be set to 0x0a02.
0x0b04	MUST be set to 0x0004.	MUST be a DWORD that MUST contain the RPC authentication level value used in the ORPC call. For more details on RPC authentication levels, see [MS-RPCE] section 2.2.1.1.8.	The collectionType field of the security property collection header (section 2.2.3.2.2) MUST be set to 0x0a02.
0x0b05	MUST be set to 0x0004.	MUST be a DWORD that MUST contain the RPC impersonation level value used in the ORPC call.	The collectionType field of the security property collection header (section 2.2.3.2.2) MUST be set to 0x0a02.
0x0b10	MUST be set to 0x0004.	MUST be a DWORD that contains the minimum of the RPC authentication level values used across all the calls in the ORPC call chain. For more details on RPC authentication levels, see [MS-RPCE] section 2.2.1.1.8.	The collectionType field of the security property collection header (section 2.2.3.2.2) MUST be set to 0x0a01.

2.2.3.2.2 Security Property Collection Header

The Security Property Collection Header structure specifies the header of a [Security Property \(section 2.2.3.2.1\)](#) collection.

0	1	2	3	4	5	6	7	8	9	10	11	12	13	14	15	16	17	18	19	20	21	22	23	24	25	26	27	28	29	30	31
collectionType																cProperties															

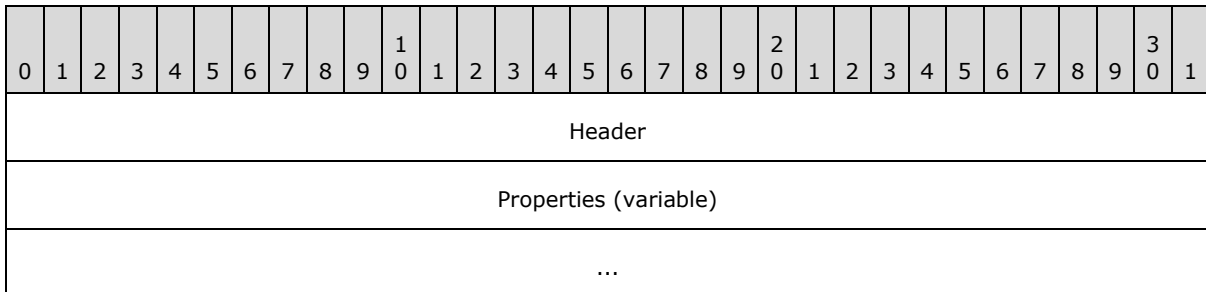
collectionType (2 bytes): An unsigned short that MUST contain one of the following values:

Value	Meaning
0x0a01	The collection MUST contain properties that are not specific to any one caller in the ORPC call chain, but that apply to the entire ORPC call chain.
0x0a02	The collection MUST contain properties that describe one caller in the ORPC call chain.

cProperties (2 bytes): An unsigned short that MUST contain the number of Security Property structures in the collection. MUST NOT be zero.

2.2.3.2.3 Security Property Collection

The Security Property Collection structure is used to specify an array of [Security Property \(section 2.2.3.2.1\)](#) structures. It consists of a collection header followed by the Security Property structures.



Header (4 bytes): A [Security Property Collection Header \(section 2.2.3.2.2\)](#).

Properties (variable): An array of Security Property structures. The number of elements in the array MUST be specified in the **cProperties** field of **Header**.

If the **collectionType** field of the **Header** has a value of 0x0a01, the **Properties** array SHOULD contain a single element with the **PropertyType** field value set to 0x0b10, specifying the minimum RPC authentication level used across the ORPC call chain.

If the **collectionType** field of the **Header** has a value of 0x0a02, the **Properties** array SHOULD contain at least 4 elements with the **PropertyType** values set to 0x0b01, 0x0b03, 0x0b04 and 0x0b05, specifying, respectively, the SID, the **authentication service**, the authentication level, and the impersonation level used in the ORPC call.

If the **collectionType** field of the **Header** has a value of 0x0a02 and if the ORPC call crosses a domain boundary, the **Properties** array SHOULD contain an additional element with the **PropertyType** value set to 0x0b02, specifying the Windows NT account name of the caller.

Otherwise, if the **collectionType** field of the **Header** has a value of 0x0a02, if the ORPC call crosses a computer boundary and if the security identity of the client is scoped to the local computer, the **Properties** array SHOULD contain an additional element with the **PropertyType** value set to 0x0b02, specifying the Windows NT account name of the caller.

2.2.3.2.4 Security ORPC Extension

The Security ORPC Extension structure is used to specify the version, style, and number of security property collections in the out-of-band data sent by the security ORPC extension.

0	1	2	3	4	5	6	7	8	9	0	1	2	3	4	5	6	7	8	9	0	1	2	3	4	5	6	7	8	9	0	1		
MaxVersion																MinVersion																	
Style																cCollections																	
Collections (variable)																																	
...																																	

MaxVersion (2 bytes): The major version number for this Security ORPC Extension format; this field MUST be set to 0x0001.

MinVersion (2 bytes): The minor version number for this Security ORPC Extension format; this field MUST be set to 0x0001.

Style (2 bytes): An unsigned short that MUST be set to one of the following values:

Value	Meaning
0x0000	The recipient of the ORPC call MUST append the security property collection (section 2.2.3.2.3) of the recipient when making an outgoing ORPC call.
0x0002	The recipient of the ORPC call MUST NOT append the security property collection (section 2.2.3.2.3) of the recipient when making an outgoing ORPC call.

cCollections (2 bytes): The unsigned number of elements in the **Collections** array.

Collections (variable): An array of security property collections (section 2.2.3.2.3). The **collectionType** field in the [Security Property Collection Header \(section 2.2.3.2.2\)](#) of the first element of the array, if present, MUST be set to 0x0a01. The **collectionType** field in the Security Property Collection Header of the remaining elements of the array, if present, MUST be set to 0x0a02. The second array element, if present, indicates the security property of the direct ORPC caller. Subsequent array elements, if present, indicate the security properties of previous callers in the ORPC call chain.

2.2.4 OBJREF_EXTENDED Context Properties

The server represents some or all server context properties as part of the marshaled OBJREF using the [OBJREF_EXTENDED](#) format ([\[MS-DCOM\]](#) section 2.2.18.7). Such properties are also known as envoy properties.

2.2.4.1 Transaction Envoy Property

The Transaction Envoy Property is used to notify the unmarshaling client that the server object is running within a transaction. The server object returns the transaction envoy context property as part of an [OBJREF_EXTENDED](#) instance.

The **policyId** field of the [PROPMARSHALHEADER](#) instance ([\[MS-DCOM\]](#) section 2.2.20.1) for the transaction envoy property MUST be set to guidTransactionProperty (see section [1.9](#)). The **CLSID** field of the [PROPMARSHALHEADER](#) instance ([\[MS-DCOM\]](#) section 2.2.20.1) for the transaction envoy property MUST be set to CLSID_TransactionEnvoy (see section [1.9](#)).

The marshaled data buffer for the property MUST be specified in the following format.

0	1	2	3	4	5	6	7	8	9	10	11	12	13	14	15	16	17	18	19	20	21	22	23	24	25	26	27	28	29	30	31
MaxVersion																MinVersion															
StreamID																															
...																															
...																															
...																															
WhereaboutsID																															
...																															
...																															
...																															
DtcCapabilities																															

MaxVersion (2 bytes): The major version number for this Transaction Envoy property format; this field MUST be set to 0x0001.

MinVersion (2 bytes): The minor version number for this Transaction Envoy property format; this field MUST be set to 0x0001.

StreamID (16 bytes): A GUID that MUST contain the transaction stream ID of the server.

WhereaboutsID (16 bytes): A GUID identifying the server object's [SWhereabouts](#). For more information, see [\[MS-DTCO\]](#).

DtcCapabilities (2 bytes): An unsigned short that MUST be set to one or more of the values defined in section [2.2.6.1](#).

2.2.4.2 Security Envoy Property

The Security Envoy Property is used to notify the unmarshaling client that the server object is using COM+ security. The server object returns the security envoy context property as part of an OBJREF_EXTENDED instance.

The **policyId** field of the [PROPMARSHALHEADER](#) instance ([\[MS-DCOM\]](#) section 2.2.20.1) for the security envoy property MUST be set to guidSecurityProperty (see section [1.9](#)). The **CLSID** field of the [PROPMARSHALHEADER](#) instance ([\[MS-DCOM\]](#) section 2.2.20.1) for the security envoy property MUST be set to CLSID_SecurityEnvoy (see section [1.9](#)).

The marshaled data buffer for the property MUST be specified in the following format:

0	1	2	3	4	5	6	7	8	9	10	11	12	13	14	15	16	17	18	19	20	21	22	23	24	25	26	27	28	29	30	31
MaxVersion																MinVersion															
guidServerDomain																															
...																															
...																															
...																															
guidServerMachine																															
...																															
...																															
...																															

MaxVersion (2 bytes): The major version number for this security envoy property format; this field MUST be set to 0x0001.

MinVersion (2 bytes): The minor version number for this security envoy property format; this field MUST be set to 0x0001.

guidServerDomain (16 bytes): A GUID that uniquely identifies the domain of the server machine. For more information, see [\[MS-NRPC\]](#) section 2.2.1.2.1.

guidServerMachine (16 bytes): A GUID that uniquely identifies the server machine.

2.2.5 Class Factory Wrapper

If a client with a **COMVERSION** ([\[MS-DCOM\]](#) section 2.2.11) greater than or equal to 5.6 requests a **class factory** reference during activation ([\[MS-DCOM\]](#) section 3.1.2.5.2.3.2), the server MUST return an **OBJREF_CUSTOM** instance containing a marshaled representation of the class factory. The unmarshaller of the **OBJREF_CUSTOM** instance on the client MUST convert object creation requests on the class factory reference to normal object activation requests. This process enables the client to send its client and prototype context properties during class-factory-based object activation requests in the same way that these properties are sent during normal object activation requests.

CLSID_CFW (see section [1.9](#)) MUST be the unmarshaller **CLSID** for the **OBJREF_CUSTOM** instance.

The format of the **OBJREF_CUSTOM.pObjectData** buffer for this CLSID_CFW MUST be specified as follows.

0	1	2	3	4	5	6	7	8	9	10	11	12	13	14	15	16	17	18	19	20	21	22	23	24	25	26	27	28	29	30	31
MaxVersion											MinVersion																				
Clsid																															
...																															
...																															
...																															
ServerName (variable)																															
...																															
ShortNameCount																															
ShortNames (variable)																															
...																															
PartitionID (optional)																															
...																															
...																															
...																															
Clctx (optional)																															
BytesRemaining (optional)																															
LongNameCount (optional)																															
LongNameBytes (optional)																															
LongNames (variable)																															
...																															

MaxVersion (2 bytes): The major version number for this Class Factory Wrapper format; this field **MUST** be set to 0x0002, 0x0003, 0x0004, or 0x0005. The value indicates which fields are present, as noted in the following relevant fields.

MinVersion (2 bytes): The minor version number for this Class Factory Wrapper format; this field MUST be set to 0x0002.

Clsid (16 bytes): A CLSID is a **UUID** that MUST identify the object class of the object to be created.

ServerName (variable): A [LengthPrefixedName \(section 2.2.1\)](#) that contains the name of the server machine on which the object is to be created.

ShortNameCount (4 bytes): A **DWORD** that MUST specify the number of elements in the **ShortNames** array.

ShortNames (variable): An array of [LengthPrefixedName \(section 2.2.1\)](#) that MUST specify alternate names or addresses for the server machine on which the object is to be created. The **Length** field of each element in the array MUST be less than 16.

PartitionID (16 bytes): A GUID that MUST specify the partition ID of the partition of the object class of the server object. This field MUST NOT be present if **MaxVersion** is less than 0x0003 and MUST be present otherwise.

Clsctx (4 bytes): A **DWORD** that MUST be set to the value of the **dwOrigClsCtx** field contained in the [SpecialPropertiesData](#) structure ([\[MS-DCOM\]](#) section 2.2.22.2.2) specified in an activation request for the class factory. This field MUST NOT be present if **MaxVersion** is less than 0x0003 and MUST be present otherwise.

BytesRemaining (4 bytes): A **DWORD** that MUST specify the number of bytes remaining in the buffer after the BytesRemaining field. This value MUST be equal to the sum of **LongNameBytes** plus 8. This field MUST NOT be present if **MaxVersion** is less than 0x0004 and MUST be present otherwise.

LongNameCount (4 bytes): A **DWORD** that MUST specify the number of elements in the **LongNames** array. This field MUST NOT be present if **MaxVersion** is less than 0x0005 and MUST be present otherwise.

LongNameBytes (4 bytes): A **DWORD** that MUST specify the number of bytes needed to contain all of the names contained in the **LongNames** array. This field MUST NOT be present if **MaxVersion** is less than 0x0005 and MUST be present otherwise.

LongNames (variable): An array of NULL-terminated Unicode strings that MUST specify alternate names or addresses for the server machine on which the object is to be created. This field MUST NOT be present if **MaxVersion** is less than 0x0005.

2.2.6 Constants

2.2.6.1 DTCO Capabilities

The constants in the following table specify the transaction propagation methods supported by a DTCO implementation.

Value	Meaning
DtcCap_CanExport (0x0001)	The DTCO implementation supports transaction export/import functionality via STxInfo as specified in [MS-DTCO] section 2.2.5.10.
DtcCap_CanTransmit (0x0002)	The DTCO implementation supports transaction transmitter/receiver functionality via Propagation-Token as specified in [MS-DTCO] section 2.2.5.4.

2.2.6.2 Transaction Isolation Levels

The constants in the following table map a subset of the isolation levels defined in [\[MS-DTCO\]](#) section 2.2.6.9 to COM+ Protocol-specific values indicating the transaction isolation level used by the COM+ client. COM+ supports only the isolation levels listed in the following table.

Value	Corresponding OLETX_ISOLATION_LEVEL value
TxIsolationLevelReadUncommitted (0x00000001)	ISOLATIONLEVEL_READUNCOMMITTED
TxIsolationLevelReadCommitted (0x00000002)	ISOLATIONLEVEL_READCOMMITTED
TxIsolationLevelRepeatableRead (0x00000003)	ISOLATIONLEVEL_REPEATABLEREAD
TxIsolationLevelSerializable (0x00000004)	ISOLATIONLEVEL_SERIALIZABLE

3 Protocol Details

The COM+ Protocol influences object activations in two ways:

- Clients send context properties as part of the client and/or prototype contexts.
- Servers process the context properties in the client and/or prototype contexts during the creation and configuration of server objects.

The following activation-related sections detail these operations as they pertain to the different features of the protocol.

The COM+ Protocol influences and adds special behaviors to ORPCs in several places:

- Client-side issuing of ORPCs.
- Server-side receipt of ORPCs.
- Server-side response to ORPCs.
- Client-side receipt of the server response to ORPCs.

The following ORPCs-related sections detail these operations as they pertain to the different features of the protocol.

3.1 Client Root Transaction Object Activation Details

3.1.1 Abstract Data Model

This section describes a conceptual model of possible data organization that an implementation maintains to participate in this protocol. The described organization is provided to facilitate the explanation of how the protocol behaves. This document does not mandate that implementations adhere to this model as long as their external behavior is consistent with that described in this document.

A client root transaction object maintains the following data structures:

- A [TransactionStream \(section 2.2.2.1.2\)](#) object.
- A **TransactionStreamID GUID**. This GUID is shared with the [Client Transaction Envoy Unmarshaling \(section 3.20\)](#)
- A **DtcCapabilities** value, consisting of a set of flags as specified in section [2.2.6.1](#). This value is shared with the [ITransactionStream Server \(section 3.23\)](#).
- An **IsolationLevel** value.
- A **CurrentTSN** value. This value is shared with the ITransactionStream Server.
- A [Propagation Token](#) instance.
- A **RootTxnObject** flag. This flag is shared with the [Client Transaction ORPC Extension \(section 3.13\)](#).

3.1.2 Timers

None.

3.1.3 Initialization

When a client root transaction object is initialized, it MUST do the following:

- Create the data structures described in section [3.1.1](#).
- Set the **RootTxnObject** flag to TRUE.
- Set the **CurrentTSN** value to 1.
- Set the DtcCap_CanTransmit (section [2.2.6.1](#)) bit in the **DtcCapabilities** value if the local DTCO **transaction manager** implementation supports the [Propagation Token](#) ([MS-DTCO] section 2.2.5.4) method of sending transactions.
- Set the DtcCap_CanExport (section [2.2.6.1](#)) bit in the **DtcCapabilities** value if the local DTCO transaction manager implementation supports the [STxInfo](#) ([MS-DTCO] section 2.2.5.10) method of sending transactions.
- Set the **IsolationLevel** value to one of the values specified in section [2.2.6.2](#).
- Set the Propagation_Token instance to the Propagation_Token of the currently active transaction instance.
- Create the [TransactionStream](#) (section [2.2.2.1.2](#)) object.
- Set the **TransactionStreamID** [GUID](#) to a unique GUID.

3.1.4 Message Processing Events and Sequencing Rules

When a client root transaction object issues an object activation request, it MUST include a [Transaction Context Property](#) (section [2.2.2.1](#)) as part of the client context.

If the client designates the server object as able to participate in a stream of transactions for future units of work, it MUST send a [TransactionStream](#) (section [2.2.2.1.2](#)) structure and MUST initialize it as specified in section [3.1.4.1](#).

Otherwise, if the client designates the server object as able to participate in only a single transaction, it MUST send a [TransactionBuffer](#) (section [2.2.2.1.3](#)) structure and MUST initialize it as specified in section [3.1.4.2](#).

3.1.4.1 Activation Using Transaction Stream

The client root transaction object MUST do the following:

- Set the **MaxVersion** field to 0x0001 if the **IsolationLevel** field is not included; otherwise, to 0x0002.
- Set the **Variant** field to 0x0000.
- Set the **StreamID** field to the TransactionStreamID GUID.
- Set the **StreamVariant** field to 0x0001.

- Set the **DtcCapabilities** field to its DtcCapabilities value.
- Marshal the [TransactionStream \(section 2.2.2.1.2\)](#) object (as specified in [\[MS-DCOM\]](#) section 3.1.1.5.1) to an [STDOBJREF](#) structure ([\[MS-DCOM\]](#) section 2.2.18.2) and set the **TransactionStream** field to the STDOBJREF. The **iid** field of the [OBJREF](#) ([\[MS-DCOM\]](#) section 2.2.18) structure contained in the STDOBJREF structure MUST be set to IID_ITransactionStream as specified in section [1.9](#).
- Set the **MarshalSize** field to the size, in bytes, of the **TransactionStream** field.
- Set the **IsolationLevel** field, if present, to the **IsolationLevel** value.

3.1.4.2 Activation Using Transaction Buffer

The client root transaction object MUST set the following:

- The **MaxVersion** field to 0x0001 if the **IsolationLevel** field is not included; otherwise, to 0x0002.
- The **Variant** field to 0x0000.
- The **StreamID** field to the TransactionStreamID GUID.
- The **StreamVariant** field to 0x0002.
- The **TransactionBuffer** field to the [Propagation Token](#) instance.
- The **BufferSize** field to the size in bytes of the **TransactionBuffer** field.
- The **IsolationLevel** field, if present, to the IsolationLevel value.

When the activation request returns, the client root transaction object MUST unmarshal the application object reference contained in the activation response as specified in section [3.20](#).

3.1.5 Timer Events

None.

3.1.6 Other Local Events

3.1.6.1 Transaction Commit

The client root transaction object MUST initiate a commit of the current transaction no later than the point of destruction of the client root transaction object. It MUST also initiate a commit of the current transaction if requested by a higher-level protocol.

When the client root transaction object initiates the commit of the current transaction, it MUST increment the CurrentTSN value.

3.1.6.2 Transaction Abort

The client root transaction object MUST initiate a cancellation of the current transaction if requested by a higher-level protocol or by the client [Transaction ORPC Extension](#).

3.2 Client Non-Root Transaction Object Activation Details

3.2.1 Abstract Data Model

A client non-root transaction object maintains the following data structure:

- A **RootTxnObject** flag. This flag is shared with the [Client Transaction ORPC Extension \(section 3.13\)](#).

3.2.2 Timers

None.

3.2.3 Initialization

At initialization time, a client non-root transaction object MUST do the following:

- Set the **RootTxnObject** flag to FALSE.
- Register as a transaction voter (see [\[MS-DTCO\]](#) section 3.5.4.9) or as a resource manager (see [\[MS-DTCO\]](#) section 3.5.5.1) with its local DTCO resource manager implementation.

3.2.4 Message Processing Events and Sequencing Rules

When a client non-root transaction object issues an object activation request, it MUST include a [Transaction Context Property \(section 2.2.2.1\)](#) as part of the client context.

If the client root or non-root transaction object supplies a transaction stream reference in the **TransactionStream** field of the Transaction Context Property (section 2.2.2.1) during activation, the client non-root transaction object MUST send a [TransactionStream \(section 2.2.2.1.2\)](#) structure and MUST initialize it as specified in section [3.1.4.1](#).

If the client root or non-root transaction object supplies a transaction buffer in the **TransactionBuffer** field of the Transaction Context Property (section 2.2.2.1) during activation, the client non-root transaction object MUST send a [TransactionBuffer \(section 2.2.2.1.3\)](#) structure and MUST initialize it as specified in section [3.1.4.2](#).

When the activation request returns, the client non-root transaction object MUST unmarshal the application object reference returned in the activation response as specified in section [3.20](#).

3.2.5 Timer Events

None.

3.2.6 Other Local Events

3.2.6.1 Transaction Outcome Participation

A client non-root transaction object MUST vote on the outcome of each transaction in which it participates, when so requested by its local DTCO transaction manager implementation (see [\[MS-DTCO\]](#), section [3.4.7.6](#)).

A client non-root transaction object MUST vote to cancel a transaction if so requested by a higher-level protocol or by the [Client Transaction ORPC Extension Details \(section 3.13\)](#).

3.3 Client Activity Activation Details

3.3.1 Abstract Data Model

This section describes a conceptual model of possible data organization that an implementation maintains to participate in this protocol. The described organization is provided to facilitate the explanation of how the protocol behaves. This document does not mandate that implementations adhere to this model as long as their external behavior is consistent with that described in this document.

A client object running within an activity maintains the following data structures:

- An activity identifier GUID.
- An activity time-out value.

3.3.2 Timers

Not applicable to client activity activation.

3.3.3 Initialization

Not applicable to [Client Activity Activation \(section 3.3\)](#).

3.3.4 Message Processing Events and Sequencing Rules

If the client object is running in a context with an activity context property, the client **MUST** create an activity context property (see section [2.2.2.2](#)) as part of the client context in the activation request. It **MUST** set the ActivityID field to the activity identifier of the client object's activity. It **MUST** set the TimeOut field to the activity time-out of the client object's activity.

3.3.5 Timer Events

Not applicable to [Client Activity Activation \(section 3.3\)](#).

3.3.6 Other Local Events

Not applicable to [Client Activity Activation \(section 3.3\)](#).

3.4 Client Partition Activation Details

3.4.1 Abstract Data Model

Not applicable to [Client Partition Activation \(section 3.4\)](#).

3.4.2 Timers

Not applicable to [Client Partition Activation \(section 3.4\)](#).

3.4.3 Initialization

Not applicable to [Client Partition Activation \(section 3.4\)](#).

3.4.4 Message Processing Events and Sequencing Rules

When a client object issues an object activation, the client MUST specify a partition ID in the **guidPartition** field of the [SpecialPropertiesData](#) structure ([MS-DCOM] section 2.2.22.2.2). The specified partition ID MUST be ONE of the following:

- GUID_NULL, to request that the server select a partition for the client.
- The partition ID associated with the client object context.
- The ID of the partition that the client requires the server object to be configured in.

3.4.5 Timer Events

Not applicable to [Client Partition Activation \(section 3.4\)](#).

3.4.6 Other Local Events

Not applicable to [Client Partition Activation \(section 3.4\)](#).

3.5 Client User Property Activation Details

3.5.1 Abstract Data Model

This section describes a conceptual model of possible data organization that an implementation maintains to participate in this protocol. The described organization is provided to facilitate the explanation of how the protocol behaves. This document does not mandate that implementations adhere to this model as long as their external behavior is consistent with that described in this document.

A client user context property maintains the following data structures:

- A table of name/value pair mappings, with the types of names and values as specified in section [2.2.2.3](#).

3.5.2 Timers

Not applicable to [Client User Property Activation \(section 3.5\)](#).

3.5.3 Initialization

Not applicable to [Client User Property Activation \(section 3.5\)](#).

3.5.4 Message Processing Events and Sequencing Rules

If an application or higher-level protocol supplies user-defined context properties (see section [2.2.2.3](#)) during activation, the client MUST copy and propagate them as part of both the client context and the prototype context in the activation request.

3.5.5 Timer Events

Not applicable to [Client User Property Activation \(section 3.5\)](#).

3.5.6 Other Local Events

Not applicable to [Client User Property Activation \(section 3.5\)](#).

3.6 Client Class Factory Wrapper Activation Details

3.6.1 Abstract Data Model

This section describes a conceptual model of possible data organization that an implementation maintains to participate in this protocol. The described organization is provided to facilitate the explanation of how the protocol behaves. This document does not mandate that implementations adhere to this model as long as their external behavior is consistent with that described in this document.

The client maintains the following data structure:

- A [Class Factory Wrapper \(section 2.2.5\)](#).

3.6.2 Timers

Not applicable to [Client Class Factory Wrapper Activation \(section 3.6\)](#).

3.6.3 Initialization

On initialization, the client MUST:

- Unmarshal the OBJREF_CUSTOM instance contained in the response to the activation request for a class factory object.
- Initialize the [Class Factory Wrapper \(section 2.2.5\)](#) structure with the corresponding fields from the Class Factory Wrapper structure contained in the **pObjectData** field of the OBJREF_CUSTOM instance.

3.6.4 Message Processing Events and Sequencing Rules

When the application makes object creation requests on the class factory object reference, the client MUST:

- Make an object activation request ([\[MS-DCOM\] sections 3.2.4.1.1 and 3.1.2.5.2](#)) by:
 - Specifying the value of the **ServerName** field from the [Class Factory Wrapper \(section 2.2.5\)](#) structure as the remote server name for the activation request.
 - Setting the value of the **classID** field in the [InstantiationInfoData](#) structure ([\[MS-DCOM\] section 2.2.22.2.1](#)) to the value of the **Clsid** field from the class factory wrapper structure.
 - Setting the value of the **guidPartition** field in the [SpecialPropertiesData](#) structure ([\[MS-DCOM\] section 2.2.22.2.2](#)) to the value of the **PartitionID** field from the class factory wrapper structure.
 - Setting the value of the **dwOrigClsCtx** field in the [SpecialPropertiesData](#) structure ([\[MS-DCOM\] section 2.2.22.2.2](#)) to the value of the **Clsctx** field from the class factory wrapper structure.
 - Sending client and prototype context properties in the [ActivationContextInfoData](#) structure ([\[MS-DCOM\] section 2.2.22.2.5](#)) as specified in section [1.3.1.1](#).

- If the activation request succeeds, return success, or continue processing as follows if not.
- For each element in the **ShortNames** array in the Class Factory Wrapper structure:
 - Make an object activation request by specifying the **ShortNames** array element as the remote server name and by setting all the other parameters to the same values specified in the first activation request.
 - If the activation request succeeds, return success; otherwise, continue processing.
- For each element in the **LongNames** array in the Class Factory Wrapper structure:
 - Make an object activation request by specifying the **LongNames** array element as the remote server name and by setting all the other parameters to the same values specified in the first activation request.
 - If the activation request succeeds, return success; otherwise, continue processing.
- Return the error code from the last activation request to the application or higher layer protocol.

3.6.5 Timer Events

Not applicable to [Client Class Factory Wrapper Activation \(section 3.6\)](#).

3.6.6 Other Local Events

Not applicable to [Client Class Factory Wrapper Activation \(section 3.6\)](#).

3.7 Server Root Transaction Object Activation Details

3.7.1 Abstract Data Model

None.

3.7.2 Timers

None.

3.7.3 Initialization

None.

3.7.4 Message Processing Events and Sequencing Rules

When processing an activation, the server root transaction object MUST:

- Create the application object using an implementation-specific mechanism.
- Marshal the object as described in section [3.18](#).

3.7.5 Timer Events

None.

3.7.6 Other Local Events

None.

3.8 Server Non-Root Transaction Object Activation Details

3.8.1 Abstract Data Model

This section describes a conceptual model of possible data organization that an implementation maintains to participate in this protocol. The described organization is provided to facilitate the explanation of how the protocol behaves. This document does not mandate that implementations adhere to this model as long as their external behavior is consistent with that described in this document.

A server non-root transaction object maintains the following data structures:

- A [TransactionStream \(section 2.2.2.1.2\)](#) object reference. This object reference is shared with the [Server Transaction ORPC Extension \(section 3.15\)](#).
- A **TransactionStreamID** GUID. This GUID is shared with the [Server Transaction Envoy Marshaling Details \(section 3.18\)](#).
- A [DtcCapabilities](#) value, containing a set of flags as specified in section [2.2.6.1](#). This value is shared with the Server Transaction ORPC Extension.
- An **IsolationLevel** value.
- A [Propagation Token \(\[MS-DTCO\] section 2.2.5.4\)](#) instance.
- An **InTransaction** flag. This flag is shared with the Server Transaction ORPC Extension.
- A **CommitTransaction** flag. This flag is shared with the Server Transaction ORPC Extension.

3.8.2 Timers

None.

3.8.3 Initialization

When a server non-root transaction object is initialized, it MUST do the following:

- Create the data structures described in section [3.8.1](#).
- Set the InTransaction flag to FALSE.
- Set the CommitTransaction flag to TRUE.
- Set the TransactionStreamID GUID to the value of the **StreamID** field of the [Transaction Context Property \(section 2.2.2.1\)](#) contained in the incoming activation request.
- Set the DtcCapabilities value to the value of the **DtcCapabilities** field of the Transaction Context Property contained in the incoming activation request if the **StreamVariant** field of Transaction Context Property is set to 0x0001.
- Otherwise, set the DtcCapabilities value to zero if the **StreamVariant** field of the Transaction Context Property contained in the incoming activation request is set to 0x0002.

- Set the IsolationLevel value to the value of the **IsolationLevel** field of the Transaction Context Property contained in the incoming activation request if the **MaxVersion** field of the Transaction Context Property is set to 0x0002.
- Otherwise, set the IsolationLevel value to the TxIsolationLevelSerializable (section [2.2.6.2](#)) value if the **MaxVersion** field of the Transaction Context Property contained in the incoming activation request is set to 0x0001.
- Copy the **TransactionBuffer** field of the Transaction Context Property contained in the incoming activation request to the [Propagation Token](#) instance if the **StreamVariant** field of the Transaction Context Property is set to 0x0002.
- Otherwise, set the TransactionStream object reference by unmarshaling (as specified in [\[MS-DCOM\]](#) section 3.2.4.1.2) the [STDOBJREF](#) ([\[MS-DCOM\]](#) section 2.2.18.2) structure contained in the **TransactionStream** field of the Transaction Context Property contained in the incoming activation request if the **StreamVariant** field of the Transaction Context Property is set to 0x0001.
- Register as a transaction voter (see [\[MS-DTCO\]](#) section 3.5.4.9) or as a resource manager (see [\[MS-DTCO\]](#) section 3.5.5.1) with its local DTCO resource manager implementation.

3.8.4 Message Processing Events and Sequencing Rules

When processing an activation, the server non-root transaction object MUST do the following:

- Create the application object using an implementation-specific mechanism.
- Marshal the application object as described in section [3.18](#).

3.8.5 Timer Events

None.

3.8.6 Other Local Events

3.8.6.1 Transaction Outcome Participation

A server non-root transaction object MUST vote on the outcome of each transaction in which it participates when so requested by its local DTCO transaction manager implementation (see [\[MS-DTCO\]](#) section 3.4.7.6). It MUST vote to commit the transaction if the **CommitTransaction** flag is set to TRUE. It MUST vote to abort the transaction if the **CommitTransaction** flag is set to FALSE.

The server non-root transaction object MUST set the InTransaction flag to FALSE after it votes on the outcome of the transaction.

3.9 Server Activity Activation Details

3.9.1 Abstract Data Model

This section describes a conceptual model of possible data organization that an implementation maintains to participate in this protocol. The described organization is provided to explain how the protocol behaves. This document does not mandate that implementations adhere to this model as long as their external behavior is consistent with that described in this document.

The server maintains the following data structures per object:

- An activity identifier GUID.
- An activity time-out value.

3.9.2 Timers

Not applicable to [Server Activity Activation \(section 3.9\)](#).

3.9.3 Initialization

Not applicable to [Server Activity Activation \(section 3.9\)](#).

3.9.4 Message Processing Events and Sequencing Rules

When processing an activation, the server MUST decide, in an implementation-specific way, if the object is to share the client's activity, run in a new activity, or not use an activity at all.

If the object is to share the client's activity, the server MUST:

- Set the activity ID and activity time-out to the values from the corresponding fields in the client's activity context property (see section [2.2.2.2](#)).

If the object is to run in a new activity, the server MUST:

- Create a new activity ID GUID.
- Set the activity time-out to an implementation-specific value. [<2>](#)

If the server object is to run without an activity, the server MUST NOT associate activity data with the object.

3.9.5 Timer Events

Not applicable to [Server Activity Activation \(section 3.9\)](#).

3.9.6 Other Local Events

Not applicable to [Server Activity Activation \(section 3.9\)](#).

3.10 Server Partition Activation Details

3.10.1 Abstract Data Model

Not applicable to [Server Partition Activation \(section 3.10\)](#).

3.10.2 Timers

Not applicable to [Server Partition Activation \(section 3.10\)](#).

3.10.3 Initialization

Not applicable to [Server Partition Activation \(section 3.10\)](#).

3.10.4 Message Processing Events and Sequencing Rules

When processing an activation request, the server MUST do the following:

- If the partition ID specified by the client in the `guidPartition` field of the [SpecialPropertiesData](#) structure ([MS-DCOM] section 2.2.22.2.2) is `GUID_NULL`, the server MUST select a partition for the server object in an implementation-specific manner. If a partition cannot be determined in an implementation-specific manner, the server MUST select the global partition.
- If the partition ID specified by the client in the `guidPartition` field of the **SpecialPropertiesData** structure ([MS-DCOM] section 2.2.22.2.2) is not `GUID_NULL`, the server MUST select the partition specified by the partition ID. If the partition does not exist, the server MUST select the global partition.

3.10.5 Timer Events

Not applicable to [Server Partition Activation \(section 3.10\)](#).

3.10.6 Other Local Events

Not applicable to [Server Partition Activation \(section 3.10\)](#).

3.11 Server User Property Activation Details

3.11.1 Abstract Data Model

Not applicable to [Server User Property Activation \(section 3.11\)](#).

3.11.2 Timers

Not applicable to [Server User Property Activation \(section 3.11\)](#).

3.11.3 Initialization

Not applicable to [Server User Property Activation \(section 3.11\)](#).

3.11.4 Message Processing Events and Sequencing Rules

When processing an activation, if [user-defined context properties \(section 2.2.2.3\)](#) are present in the client and prototype contexts, the server MUST copy and supply these properties to applications or higher-level protocols that consume the properties.

3.11.5 Timer Events

Not applicable to [Server User Property Activation \(section 3.11\)](#).

3.11.6 Other Local Events

Not applicable to [Server User Property Activation \(section 3.11\)](#).

3.12 Server Class Factory Wrapper Activation Details

3.12.1 Abstract Data Model

Not applicable to [Server Class Factory Wrapper Activation \(section 3.12\)](#).

3.12.2 Timers

Not applicable to [Server Class Factory Wrapper Activation \(section 3.12\)](#).

3.12.3 Initialization

Not applicable to [Server Class Factory Wrapper Activation \(section 3.12\)](#).

3.12.4 Message Processing Events and Sequencing Rules

If the activation request is for a class factory object ([MS-DCOM] section 3.1.2.5.2.3.2), and if the **CONVERSION** ([MS-DCOM] section 2.2.11) of the client is greater than or equal to 5.6, the server MUST:

- Create an **OBJREF_CUSTOM** instance ([MS-DCOM] section 2.2.18.6) for the marshaled object reference of the class factory object.
- Create and initialize the **pObjectData** field of the OBJREF_CUSTOM instance, and MUST set:
 - The **MaxVersion** field to 0x0005.
 - The **MinVersion** field to 0x0002.
 - The **Clsid** field to the GUID of the object class.
 - The **ServerName** field to a [LengthPrefixedName \(section 2.2.1\)](#) containing the computer name of the server machine. <3>
 - The **ShortNameCount** to the number of elements in the **ShortNames** array.
 - The **ShortNames** field to an array of LengthPrefixedName structures. The array MUST contain **ShortNameCount** elements. The **Length** field of each LengthPrefixedName structure MUST be less than 16. The **Name** field of each LengthPrefixedName structure MUST contain an alternate computer name or a network address of the server machine. <4>
 - Further, the server MUST set:
 - The **PartitionID** guid to the partition ID of the object class.
 - The **Clsctx** field to the value of the **dwOrigClsctx** field contained in the [SpecialPropertiesData](#) structure ([MS-DCOM] section 2.2.22.2.2) specified in the activation request for the class factory object.
 - The **BytesRemaining** field to the number of bytes in the **LongNames** array plus 8.
 - The **LongNameCount** field to the number of elements in the **LongNames** array.
 - The **LongNames** field to an array of Unicode strings. Each element in the array MUST contain an alternate computer name or a network address of the server machine. <5>

3.12.5 Timer Events

Not applicable to [Server Class Factory Wrapper Activation \(section 3.12\)](#).

3.12.6 Other Local Events

Not applicable to [Server Class Factory Wrapper Activation \(section 3.12\)](#).

3.13 Client Transaction ORPC Extension Details

3.13.1 Abstract Data Model

This section describes a conceptual model of possible data organization that an implementation maintains to participate in this protocol. The described organization is provided to explain how the protocol behaves. This document does not mandate that implementations adhere to this model as long as their external behavior is consistent with that described in this document.

The client transaction ORPC extension maintains the following data structures:

- A **RootTxnObject** flag. This flag is initialized by the [Client Root Transaction Object \(section 3.1\)](#) or the [Client Non-Root Transaction Object \(section 3.2\)](#).
- A **DtcCapabilities** value, consisting of a set of flags as specified in section [2.2.6.1](#). This value is shared with and initialized by the [Client Transaction Envoy Unmarshaling \(section 3.20\)](#).
- A **TransactionRequiredInORPC** flag. This flag is shared with and initialized by the Client Transaction Envoy Unmarshaling.
- A **WhereaboutsID** GUID. This GUID is shared with and initialized by the Client Transaction Envoy Unmarshaling.
- A **CurrentTSN** value.
- A **KnownTSN** value.
- A **Whereabouts Table**: A table of entries for each [OBJREF_EXTENDED \(section 2.2.4\)](#) object reference unmarshaled by the client, where each entry contains a **WhereaboutsID** GUID and the [SWhereabouts](#) structure identified by the **WhereaboutsID** GUID. The table is shared with and initialized by the Client Transaction Envoy Unmarshaling.

3.13.2 Timers

None.

3.13.3 Initialization

When the client transaction ORPC extension is initialized, it MUST do the following:

- Create the data structures described in section [3.13.1](#).
- If the **RootTxnObject** flag is set to TRUE, it MUST set the CurrentTSN value to the CurrentTSN value of the [client root transaction object \(section 3.1\)](#).
- Otherwise, it MUST set the CurrentTSN value to 1.
- It MUST set the KnownTSN value to 0.

3.13.4 Message Processing Events and Sequencing Rules

When the client transaction ORPC extension participates in an ORPC request, it MUST perform the following sequence of operations.

If the TransactionRequiredInORPC flag is FALSE, the client MUST NOT send a [transaction ORPC call extension \(section 2.2.3.1.1\)](#) in the ORPC request.

Otherwise, the client transaction ORPC extension MUST construct a [TransactionPropCallHeader \(section 2.2.3.1.1.1\)](#) structure as follows:

- It MUST set the **m_ulSeq** field to the CurrentTSN value.
- If the DtcCap_CanTransmit bit (section [2.2.6.1](#)) is set in the DtcCapabilities flag, the client transaction ORPC extension MUST set the **m_usFlags** field to 0x00000000.
- Otherwise, if the DtcCap_CanExport bit (section [2.2.6.1](#)) is set in the DtcCapabilities value:
 - The client transaction ORPC extension MUST look up the **WhereaboutsID** GUID in the global Whereabouts table.
 - If the entry is found and if the entry has a non-empty [SWhereabouts](#) structure, it MUST set the **m_usFlags** field to 0x00000000.
 - Otherwise, it MUST set the **m_usFlags** field to TransactionPropCallFlag_NeedWhereabouts.
- Otherwise, it MUST set the **m_usFlags** field to 0x00000000.
- If the CurrentTSN value is the same as the KnownTSN value, the client transaction ORPC extension MUST set the **m_usVariant** field to TransactionPropCall_None.
- Otherwise, if the **m_usFlags** field is set to TransactionPropCallFlag_NeedWhereabouts, the client transaction ORPC extension MUST set the **m_usVariant** field to TransactionPropCall_None.
- Otherwise, if the DtcCap_CanTransmit bit is set in the DtcCapabilities value, the client transaction ORPC extension MUST set the **m_usVariant** field to TransactionPropCall_TransmitterBuffer and MUST follow the TransactionPropCallHeader structure with a [TransactionPropCallTransmitterBuffer \(section 2.2.3.1.1.3\)](#) structure containing the [Propagation Token \(\[MS-DTCO\] section 2.2.5.4\)](#) for the current transaction.
- Otherwise, if the DtcCap_CanExport bit is set in the DtcCapabilities value, the client transaction ORPC extension MUST set the **m_usVariant** field to [TransactionPropCallExportCookie \(section 2.2.3.1.1.2\)](#) and MUST follow the TransactionPropCallHeader structure with [TransactionPropCallExportCookie](#) containing the [STxInfo \(\[MS-DTCO\] section 2.2.5.10\)](#) for the current transaction.

If the ORPC request contains an application object in an ORPC request parameter, the client transaction ORPC extension MUST marshal the application object as specified in section [3.19](#).

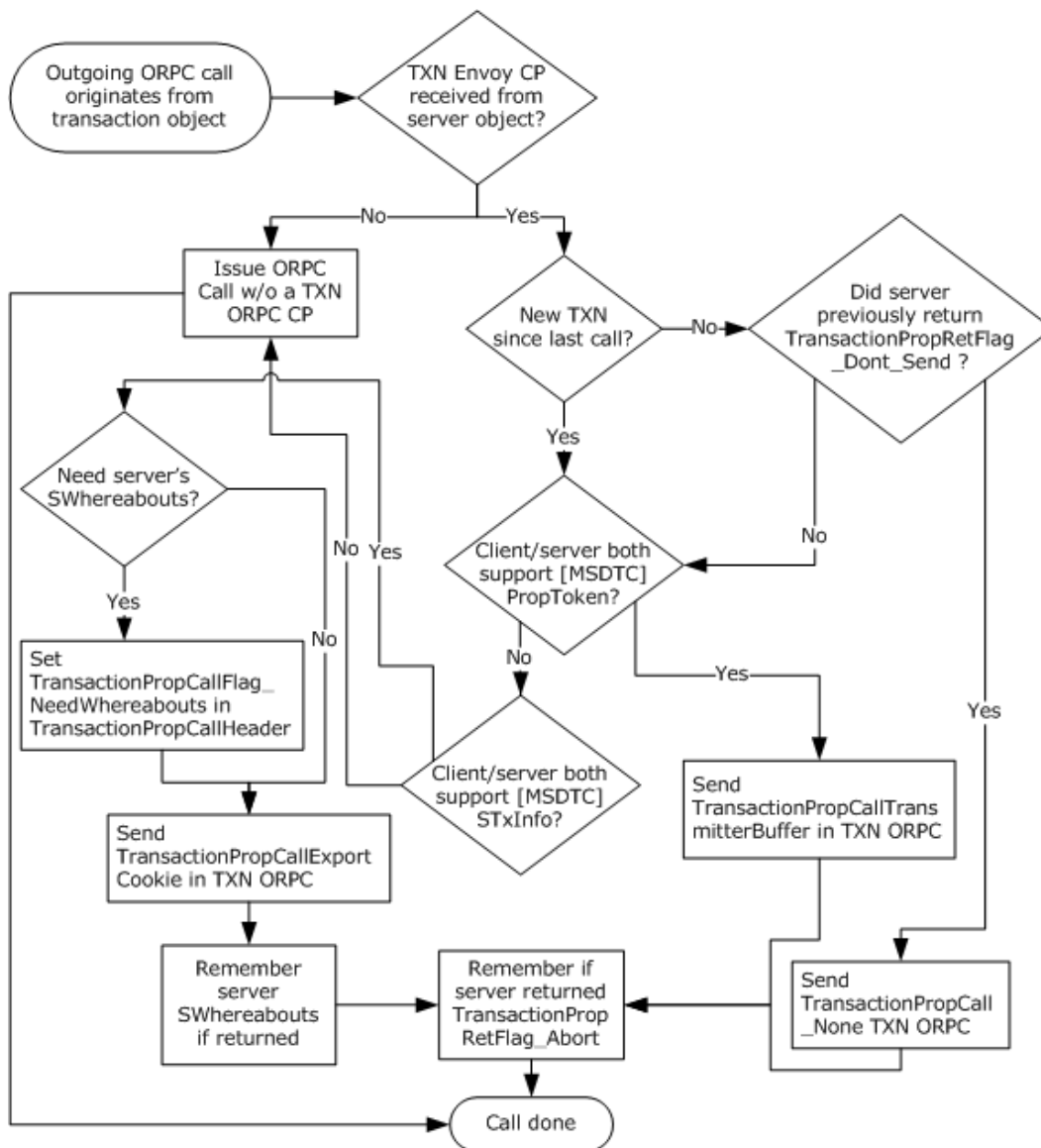
If the ORPC request contains an application object reference in an ORPC request parameter, the client transaction ORPC extension MUST marshal the application object reference as specified in section [3.20](#).

Upon return of the ORPC call, the client transaction ORPC extension MUST process the returned [TransactionPropRetHeader \(section 2.2.3.1.2.1\)](#) from the server as follows:

- If the ORPC response contains an application object reference in an ORPC response parameter, the client transaction ORPC extension MUST unmarshal the application object reference as specified in section [3.20](#).
- If the **m_usFlags** field of TransactionPropRetHeader contains the TransactionPropRetFlag_DontSend flag, the client transaction envoy MUST set the KnownTSN value to the CurrentTSN value.
- If the **m_usVariant** field of TransactionPropRetHeader contains the TransactionPropRet_Whereabouts flag, the client MUST do the following:
 - Look up the **WhereaboutsID** GUID in the global Whereabouts table.
 - Set the SWhereabouts ([\[MS-DTCO\]](#) section 2.2.5.11) contained in the [TransactionPropRetWhereabouts \(section 2.2.3.1.2.2\)](#) structure in the table entry.

3.13.4.1 Diagram

This diagram shows the logical processing flow when issuing an ORPC from a client transactional object to a server object, which might or might not be running in the same transaction as the client object.



Flow chart of outgoing ORPC from a transaction object

Figure 6: Flow chart of outgoing ORPC from a transactional object

3.13.5 Timer Events

None.

3.13.6 Other Local Events

3.13.6.1 Transaction Outcome Participation

The [Client Transaction ORPC Extension](#) MUST instruct the [Client Root Transaction Object \(section 3.1\)](#) to initiate the cancellation of the transaction if the `TransactionPropRetFlag_Abort` flag is set in

the **m_usFlags** field of the [TransactionPropRetHeader \(section 2.2.3.1.2.1\)](#) structure contained in the ORPC response.

The Client Transaction ORPC Extension MUST instruct the [Client Non-Root Transaction Object \(section 3.2\)](#) to vote to cancel the transaction if the TransactionPropRetFlag_Abort flag is set in the **m_usFlags** field of TransactionPropRetHeader contained in the ORPC response.

3.14 Client Security ORPC Extension Details

3.14.1 Abstract Data Model

This section describes a conceptual model of possible data organization that an implementation maintains to participate in this protocol. The described organization is provided to explain how the protocol behaves. This document does not mandate that implementations adhere to this model as long as their external behavior is consistent with that described in this document.

If the client receives an ORPC, it acts as a server and maintains the data structures specified in section [3.16.1](#). In addition, it maintains the data structures specified in section [3.22.1](#).

3.14.2 Timers

Not applicable to [Client Security ORPC Extensions \(section 3.14\)](#).

3.14.3 Initialization

Not applicable to [Client Security ORPC Extensions \(section 3.14\)](#).

3.14.4 Message Processing Events and Sequencing Rules

When the client makes an ORPC request (see [\[MS-DCOM\] section 3.2.4.2](#)), the extension MUST add a [Security ORPC Extension \(section 2.2.3.2.4\)](#) structure to the ORPC message. The extension MUST create the structure and MUST:

- Set the **Style** field to 0x0000 unless an application or a higher-level protocol requires the extension to set this field to 0x0002.
- If the **Style** field is set to 0x0000, the extension MUST create the rest of the structure as follows:
 - If the client is processing an incoming ORPC, the extension MUST look up the Security ORPC Extension structure corresponding to the incoming ORPC in the Security ORPC Extension table. It MUST increment the value of the **cCollections** field in the structure by 1 and set this value in the **cCollections** field.
 - Otherwise, the extension MUST set the **cCollection** field to 0x0002.
 - Next, the extension MUST create the first collection and MUST:
 - Set the **collectionType** field in the header to 0x0a01.
 - Set the **cProperties** field in the header to 0x0001.
 - Create the [Security Property \(section 2.2.3.2.1\)](#) for the collection and MUST:
 - Set the **Type** field 0x0b10.
 - Set the **Size** field to 0x0004.

- If the client is processing an incoming ORPC, the extension MUST:
 - Look up the Security ORPC Extension structure corresponding to the incoming ORPC in the Security ORPC Extension table.
 - Look up the Security Property value for type 0x0b10 in the Security ORPC Extension structure.
 - Compare this value to the authentication level of the outgoing ORPC request.
 - Set the **Data** field to the minimum of the two values.
- Otherwise, the extension MUST set the **Data** field to the authentication level of the current ORPC call.
- Next, if the client is processing an incoming ORPC, the extension MUST:
 - Look up the Security ORPC Extension structure corresponding to the incoming ORPC in the Security ORPC Extension table.
 - For each Security Property Collection in the Security ORPC Extension structure with a **collectionType** field in the header set to 0x0a02, the extension MUST:
 - Copy the Security Property Collection to the Security ORPC Extension structure of the outgoing ORPC.
- Next, the extension MUST add the last collection and MUST:
 - Set the **collectionType** field in the header to 0x0a02.
 - Set the **cProperties** field in the header to 0x0003.
 - Create a Security Property for the collection and MUST set:
 - The **Type** field to 0x0b03.
 - The **Size** field to 0x0004.
 - The **Data** field to the authentication service of the current ORPC call.
 - The extension MUST next create a Security Property for the collection and MUST set:
 - The **Type** field to 0x0b04.
 - The **Size** field to 0x0004.
 - The **Data** field to the authentication level of the current ORPC call.
 - The extension MUST next create a Security Property for the collection and MUST set:
 - The **Type** field to 0x0b05.
 - The **Size** field to 0x0004.
 - The **Data** field to the impersonation level of the current ORPC call.
 - If the extension can obtain the security identifier (SID) of the caller via authentication or from an application or higher-level protocol, it MUST:

- Increment the **cProperties** field by 0x0001.
- Create a Security Property for the collection and MUST set:
 - The **Type** field to 0x0b01, unless an application or a higher-level protocol requires that the extension set the **Type** field to 0x0b06.
 - The **Size** field to the size in bytes of the [SID](#).
 - The **Data** field to the **SID**.
- Next the extension MUST compare the **domainGUID** of the client computer to that of the object reference. If they are different, it MUST:
 - Determine, in an implementation-specific manner or from an application or a higher-level protocol, the Windows NT operating system account name of the caller.
 - Increment the **cProperties** field by 0x0001.
 - Create a Security Property for the collection and MUST set:
 - The **Type** field to 0x0b02, unless an application or a higher-level protocol requires that the extension set the **Type** field to 0x0b07.
 - The **Size** field to the size, in bytes, of the **Data** field.
 - The **Data** field to the Windows NT account name of the caller.
- Otherwise, the extension MUST compare the **machineGUID** of the client computer to that of the object reference. If they are different, it MUST:
 - Determine, in an implementation-specific manner, if the security identity of the caller is scoped within the client computer (for example, if it is a local machine account).
 - If the caller is a local machine account, the extension MUST:
 - Determine, in an implementation-specific manner or from an application or a higher-level protocol, the Windows NT account name of the caller.
 - Increment the **cProperties** field by 0x0001.
 - Create a Security Property for the collection and MUST set:
 - The **Type** field to 0x0b02, unless an application or a higher level protocol requires that the extension set the **Type** field to 0x0b07.
 - The **Size** field to the size, in bytes, of the **Data** field.
 - The **Data** field to the Windows NT account name of the caller.
- If the **Style** field is set to 0x0002, the extension MUST create the rest of the structure as follows:
 - If the client is currently processing an incoming ORPC, the extension MUST:
 - Look up the Security ORPC Extension structure corresponding to the incoming ORPC in the Security ORPC Extension table.
 - Set the rest of the Security ORPC Extension structure in the outgoing ORPC to the corresponding data from the Security ORPC Extension structure of the incoming ORPC.

- Otherwise, the extension MUST set the **cCollections** field to 0x0000.

3.14.5 Timer Events

Not applicable to [Client Security ORPC Extensions \(section 3.14\)](#).

3.14.6 Other Local Events

Not applicable to [Client Security ORPC Extensions \(section 3.14\)](#).

3.15 Server Transaction ORPC Extension Details

The server transaction ORPC extension is applicable only to non-root transaction objects. It is not applicable to root transaction objects.

3.15.1 Abstract Data Model

This section describes a conceptual model of possible data organization that an implementation maintains to participate in this protocol. The described organization is provided to explain how the protocol behaves. This document does not mandate that implementations adhere to this model as long as their external behavior is consistent with that described in this document.

The [Server Transaction ORPC Extension](#) maintains the following data structures:

A [TransactionStream](#) object reference. This object reference is shared with and initialized by the [Server Non-Root Transaction Object](#) (see section [3.8](#)).

A **CurrentTSN** value.

A **DtcCapabilities** value, consisting of a set of flags as specified in section [2.2.6.1](#). This value is shared with and initialized by the Server Non-Root Transaction Object.

A [Propagation Token](#) instance ([\[MS-DTCO\]](#) section 2.2.5.4).

An [STxInfo](#) instance ([\[MS-DTCO\]](#) section 2.2.5.10).

A **TransactionUpdated** flag.

A **CommitTransaction** flag. This flag is shared with and initialized by the Server Non-Root Transaction Object .

An **InTransaction** flag. This flag is shared with and initialized by the Server Non-Root Transaction Object.

3.15.2 Timers

None.

3.15.3 Initialization

When the server transaction ORPC extension is initialized, it MUST do the following:

- Create the data structures described in section [3.15.1](#).
- Set the **CurrentTSN** value to zero.
- Set the TransactionUpdated flag to FALSE.

3.15.4 Message Processing Events and Sequencing Rules

When a [Server Transaction ORPC Extension](#) receives an ORPC, it MUST perform the following sequence of operations.

If the incoming ORPC does not contain a [Transaction ORPC Extension \(section 2.2.3.1\)](#), the server transaction ORPC extension MUST do the following:

- If the `DtcCap_CanExport` bit (section [2.2.6.1](#)) is not set in the `DtcCapabilities` value and the `DtcCap_CanTransmit` bit (section [2.2.6.1](#)) is not set in the `DtcCapabilities` value, the server transaction ORPC extension MUST stop further processing and MUST return `CONTEXT_E_TMNOTAVAILABLE` from the ORPC request.
- If the `DtcCap_CanExport` bit is set in the `DtcCapabilities` value and the local DTCO transaction manager implementation does not support the [STxInfo \(\[MS-DTCO\] section 2.2.5.10\)](#) method of sending transactions or if the `DtcCap_CanTransmit` bit is set in the `DtcCapabilities` value and the local DTCO transaction manager implementation does not support the [Propagation Token \(\[MS-DTCO\] section 2.2.5.4\)](#) method of sending transactions, the server transaction ORPC extension MUST stop further processing and MUST return `CONTEXT_E_TMNOTAVAILABLE` from the ORPC request.
- If the `DtcCap_CanExport` bit is set in the `DtcCapabilities` value and the local DTCO transaction manager implementation supports the `STxInfo` method of sending transactions, the server transaction ORPC extension MUST do the following:
 - Call the [GetSeqAndTxViaExport \(section 3.23.4.1\)](#) method of the [TransactionStream \(section 2.2.2.1.2\)](#) object reference.
 - If the **GetSeqAndTxViaExport** call succeeds, the server transaction ORPC extension MUST do the following:
 - If the value returned in `pulCurrentSeq` parameter is different from the **CurrentTSN** value, the server transaction ORPC extension MUST do the following:
 - If the **InTransaction** flag is set to `TRUE`, it MUST abort the previous transaction.
 - It MUST set **InTransaction** flag to `TRUE`.
 - Set the **CurrentTSN** value to the value returned in `pulCurrentSeq`.
 - Set the `STxInfo` instance to the value returned in the `prgbExportCookie` parameter.
 - Set the **TransactionUpdated** flag to `TRUE`.
 - If the **GetSeqAndTxViaExport** call fails, the server transaction ORPC extension MUST do the following:
 - Call the [GetTxViaExport \(section 3.23.4.3\)](#) method of the `TransactionStream` object reference.
 - If the **GetTxViaExport** call succeeds, the server transaction ORPC extension MUST do the following:
 - Set the `STxInfo` instance to the value returned in `prgbExportCookie`.
 - Set the **TransactionUpdated** flag to `TRUE`.

- If the **GetTxViaExport** call fails, the server transaction ORPC extension MUST set the **CommitTransaction** flag to FALSE.
- Otherwise, the server transaction ORPC extension MUST do the following:
 - Call the [GetSeqAndTxViaTransmitter \(section 3.23.4.2\)](#) method of the TransactionStream object reference.
 - If the **GetSeqAndTxViaTransmitter** call succeeds, the server transaction ORPC extension MUST do the following:
 - If the value returned in *pulCurrentSeq* is different from the **CurrentTSN** value, the server transaction ORPC extension MUST do the following:
 - If **InTransaction** flag is set to TRUE, it MUST abort the previous transaction.
 - It MUST set **InTransaction** flag to TRUE.
 - Set the **CurrentTSN** value to the value returned in *pulCurrentSeq*.
 - Set the Propagation-Token instance to the value returned in the *prgbTransmitterBuffer* parameter.
 - Set the **TransactionUpdated** flag to TRUE.
 - If the **GetSeqAndTxViaTransmitter** call fails, the server transaction ORPC extension MUST do the following:
 - Call the [GetTxViaTransmitter \(section 3.23.4.4\)](#) method of the TransactionStream object reference, setting the *ulRequestSeq* parameter to the **CurrentTSN** value.
 - If the **GetTxViaTransmitter** call succeeds, the server transaction ORPC extension MUST do the following:
 - Set the Propagation-Token instance to the value returned in *prgbTransmitterBuffer*.
 - Set the **TransactionUpdated** flag to TRUE.
 - If the **GetTxViaTransmitter** call fails, the server transaction ORPC extension MUST set the **CommitTransaction** flag to FALSE.
- If the incoming ORPC does contain a Transaction ORPC Extension, the server transaction ORPC extension MUST do the following:
 - If the **m_ulSeq** field of the [TransactionPropCallHeader \(section 2.2.3.1.1.1\)](#) is less than the **CurrentTSN** value, the server transaction ORPC extension MUST return CONTEXT_E_ABORTING from the ORPC request.
 - If the **m_ulSeq** field of the TransactionPropCallHeader is greater than the **CurrentTSN** value, the server transaction ORPC extension MUST do the following:
 - If the **InTransaction** flag is set to TRUE, the server transaction ORPC extension MUST abort the previous transaction.
 - It MUST set the **InTransaction** flag to TRUE.
 - Set the **CurrentTSN** value to the value contained in **m_ulSeq** field of the TransactionPropCallHeader.

- If the **m_usVariant** field of the TransactionPropCallHeader is set to TransactionPropCall_None, the server transaction ORPC extension MUST do the following:
 - If the DtcCap_CanExport bit is not set in the **DtcCapabilities** value and the DtcCap_CanTransmit bit is not set in the **DtcCapabilities** value, the server transaction ORPC extension MUST stop further processing and MUST return CONTEXT_E_TMNOTAVAILABLE from the ORPC request.
 - If the DtcCap_CanExport bit is set in the **DtcCapabilities** value and the local DTCO transaction manager implementation does not support the STxInfo method of sending transactions or if the DtcCap_CanTransmit bit is set in the **DtcCapabilities** value and the local DTCO transaction manager implementation does not support the Propagation-Token method of sending transactions, the server transaction ORPC extension MUST stop further processing and MUST return CONTEXT_E_TMNOTAVAILABLE from the ORPC request.
 - If the DtcCap_CanTransmit bit is set in the **DtcCapabilities** value and the local DTCO transaction manager implementation supports the Propagation-Token method of sending transactions, the server transaction ORPC extension MUST do the following:
 - Call the **GetTxViaTransmitter** method of the TransactionStream object reference, setting ulRequestSeq to the **CurrentTSN** value.
 - If the **GetTxViaTransmitter** call succeeds, the server transaction ORPC extension MUST do the following:
 - Set the Propagation-Token instance to the value returned in *prgbTransmitterBuffer*.
 - Set the **TransactionUpdated** flag to TRUE.
 - If the **GetTxViaTransmitter** call fails, the server transaction ORPC extension MUST set the **CommitTransaction** flag to FALSE.
 - Otherwise, the server transaction ORPC extension MUST do the following:
 - Call the **GetTxViaExport** method of the TransactionStream object reference.
 - If the **GetTxViaExport** call succeeds, the server transaction ORPC extension MUST:
 - Set the STxInfo instance to the value returned in *prgbExportCookie*.
 - Set the **TransactionUpdated** flag to TRUE.
 - If the **GetTxViaExport** call fails, the server transaction ORPC extension MUST set the **CommitTransaction** flag to FALSE.
- If the **m_usVariant** field of the TransactionPropCallHeader is set to TransactionPropCall_ExportCookie, it MUST set the STxInfo instance to the STxInfo contained in the **ExportCookie** field of the [TransactionPropCallExportCookie \(section 2.2.3.1.1.2\)](#) structure.
- If the **m_usVariant** field of the TransactionPropCallHeader is set to TransactionPropCall_TransmitterBuffer, it MUST set the Propagation-Token instance to the Propagation-Token contained in the **TransmitterBuffer** field of the [TransactionPropCallTransmitterBuffer \(section 2.2.3.1.1.3\)](#) structure.

If the ORPC request contains an application object reference in an ORPC request parameter, the server transaction ORPC extension MUST unmarshal the application object reference as specified in section [3.20](#).

The server transaction ORPC extension MUST then execute the ORPC call.

If an application or higher level protocol requests the server transaction ORPC extension to abort the transaction, it MUST set the **CommitTransaction** flag to FALSE.

After the ORPC call is executed, the server transaction ORPC extension MUST do the following:

- If the ORPC response contains an application object in an ORPC response parameter, the server transaction ORPC extension MUST marshal the application object as specified in section [3.21](#).
- If the ORPC response contains an application object reference in an ORPC response parameter, the server transaction ORPC extension MUST marshal the application object reference as specified in section [3.22](#).
- If the client requested the server's [SWhereabouts](#) ([MS-DTCO] section 2.2.5.11) by setting the TransactionPropCallFlag_NeedWhereabouts flag in the **m_usFlags** field of the TransactionPropCallHeader, the server transaction ORPC extension MUST return a [TransactionPropRetWhereabouts](#) (section 2.2.3.1.2.2) structure.
- If the client did not request the server's SWhereabouts, it MUST return a [TransactionPropRetHeader](#) (section 2.2.3.1.2.1) structure with the **m_usVariant** field of the TransactionPropRetHeader structure set to TransactionPropRet_None.
- If the **TransactionUpdated** flag is TRUE, the server transaction ORPC extension SHOULD [<6>](#) set the TransactionPropRetFlag_DontSend bit in the **m_usFlag** field of the TransactionPropRetHeader structure.
- If the **CommitTransaction** flag is set to FALSE, the server transaction ORPC extension MUST set the TransactionPropRetFlag_Abort bit in the **m_usFlag** field of the TransactionPropRetHeader structure.

3.15.5 Timer Events

None.

3.15.6 Other Local Events

3.15.6.1 Server Non-Root Transaction Object Communication

When the [Server Transaction ORPC Extension](#) (section 3.15) is contacted by [Server Non-Root Transaction Object](#) (section 3.8) to inform it that the current transaction is being aborted by a higher level protocol, the Server Transaction ORPC Extension MUST set the AbortCurrentTransaction flag to TRUE.

3.15.6.2 Transaction Outcome Participation

The server transaction ORPC extension MUST instruct the [Server Non-Root Transaction Object](#) (section 3.8) to vote to cancel the previous transaction if the AbortPreviousTransaction flag is set to TRUE.

3.16 Server Security ORPC Extension Details

3.16.1 Abstract Data Model

This section describes a conceptual model of possible data organization that an implementation maintains to participate in this protocol. The described organization is provided to explain how the protocol behaves. This document does not mandate that implementations adhere to this model as long as their external behavior is consistent with that described in this document.

The [server security ORPC extension \(section 3.16\)](#) maintains a table of [Security ORPC Extension \(section 2.2.3.2.4\)](#) structures.

3.16.2 Timers

None.

3.16.3 Initialization

None.

3.16.4 Message Processing Events and Sequencing Rules

On receipt of an ORPC ([\[MS-DCOM\]](#) section 3.1.1.5.4), the [Security ORPC Extension \(section 2.2.3.2.4\)](#) MUST:

- Add an entry to the Security ORPC Extension table, and MUST set the fields in the entry to the corresponding fields in the Security ORPC Extension structure contained in the ORPC message.

When returning from an ORPC ([\[MS-DCOM\]](#) section 3.1.1.5.4), the Security ORPC Extension MUST remove the entry corresponding to the ORPC from the Security ORPC Extension table.

3.16.5 Timer Events

None.

3.16.6 Other Local Events

None.

3.17 Server Activity ORPC Processing Details

3.17.1 Abstract Data Model

This section describes a conceptual model of possible data organization that an implementation maintains to participate in this protocol. The described organization is provided to explain how the protocol behaves. This document does not mandate that implementations adhere to this model as long as their external behavior is consistent with that described in this document.

The server maintains the data structures specified in section [3.9.1](#). In addition, the server maintains the following:

- A table of objects, keyed by the activity ID.
- An activity timer for each activity.

- An activity lock.
- For each object, the causality identifier of the current outstanding ORPC call into the object, if any.

3.17.2 Timers

The server MUST maintain a per-activity timer.

3.17.3 Initialization

The server MUST initialize the per-activity timer to the time-out value of the activity set during the object activation request (see section [3.9.4](#)).

3.17.4 Message Processing Events and Sequencing Rules

When processing an incoming ORPC call, the server MUST:

- Look up the activity ID of the object that is processing the ORPC call.
- Look up the list of objects that share the same activity.
- For each object in the list, the server MUST:
 - Determine the causality identifier of the outstanding ORPC call to the object.
 - If there is a causality identifier, the server MUST:
 - Compare the causality identifier of the outstanding ORPC call to that of the incoming ORPC call.
 - If they are the same, the server MUST allow the incoming ORPC call to the current object to be executed.
 - If they are different, the server MUST:
 - Start the activity timer.
 - Attempt to take the activity lock.
 - If the timer expires, the server MUST reject the incoming ORPC call as specified in section [3.17.5](#).
 - If the activity lock is acquired, the server MUST:
 - Set the causality identifier of the current object to that of the incoming ORPC call.
 - Reset the activity timer.
 - Allow the incoming ORPC call to be executed.
 - If there is no causality identifier, the server MUST examine the next object.
- If there are no outstanding ORPC calls on any object in the list, the server MUST:
 - Take the activity lock.
 - Set the causality identifier of the current object to that of the incoming ORPC call.

- Allow the incoming ORPC call to be executed.
- When the ORPC call completes, the server MUST:
 - Remove the causality identifier associated with the current object.
 - Relinquish the activity lock.

3.17.5 Timer Events

The server MUST return `CONTEXT_E_SYNCH_TIMEOUT` to each outstanding ORPC call when the activity timer of the current activity expires.

3.17.6 Other Local Events

None.

3.18 Server Transaction Envoy Marshaling Details

3.18.1 Abstract Data Model

This section describes a conceptual model of possible data organization that an implementation maintains to participate in this protocol. The described organization is provided to explain how the protocol behaves. This document does not mandate that implementations adhere to this model as long as their external behavior is consistent with that described in this document.

The [server transaction envoy \(section 3.18\)](#) maintains the following data structures:

- A **TransactionStreamID** GUID. This GUID is shared with and initialized by the [Server Non-Root Transaction Object \(section 3.8\)](#).
- An **SWhereaboutsID** GUID.
- A **DtcCapabilities** value, consisting of a set of flags specified in section [2.2.6.1](#).

3.18.2 Timers

None.

3.18.3 Initialization

When a server transaction envoy object is initialized, it MUST do the following:

- Create the data structures described in section [3.18.1](#).
- Set the `DtcCap_CanTransmit` bit (section [2.2.6.1](#)) in the `DtcCapabilities` value if the local DTCO transaction manager implementation supports the [Propagation Token \(\[MS-DTCO\] section 2.2.5.4\)](#) method of sending transactions.
- Set the `DtcCap_CanExport` bit ([2.2.6.1](#)) in the `DtcCapabilities` value if the local DTCO transaction manager implementation supports the [STxInfo \(\[MS-DTCO\] section 2.2.5.10\)](#) method of sending transactions.
- Set the **SWhereaboutsID** GUID to a GUID that uniquely identifies the [SWhereabouts \(\[MS-DTCO\] section 2.2.5.11\)](#) of the local DTCO transaction manager implementation.

3.18.4 Message Processing Events and Sequencing Rules

When an application object is marshaled, the server transaction envoy MUST produce an [OBJREF_EXTENDED](#) ([\[MS-DCOM\]](#) section 2.2.18.7) instance if the DCOM version of the client is 5.6 or greater.

If the server transaction envoy is for a [Root Transaction Object \(section 1.3.2.2\)](#), the server transaction envoy MUST NOT contribute a [Transaction Envoy Property \(section 2.2.4.1\)](#) to the OBJREF_EXTENDED instance.

If the server transaction envoy is for a [Non-root Transaction Object \(section 1.3.2.3\)](#), the server transaction envoy MUST contribute a Transaction Envoy Property to the OBJREF_EXTENDED instance.

- The **StreamID** field MUST be set to the TransactionStreamID GUID.
- The **WhereaboutsID** field MUST be set to the SWhereaboutsID GUID.
- The **DtcCapabilities** field MUST be set to the DtcCapabilities value.

3.18.5 Timer Events

None.

3.18.6 Other Local Events

None.

3.19 Server Security Envoy Marshaling Details

3.19.1 Abstract Data Model

This section describes a conceptual model of possible data organization that an implementation maintains to participate in this protocol. The described organization is provided to explain how the protocol behaves. This document does not mandate that implementations adhere to this model as long as their external behavior is consistent with that described in this document.

The [server security envoy \(section 3.19\)](#) maintains the following GUID data structure instances:

- domainGUID, which identifies the domain of the computer.
- machineGUID, which identifies the computer.

3.19.2 Timers

None.

3.19.3 Initialization

On initialization, the [server security envoy \(section 3.19\)](#) MUST:

- Set the domainGUID to the GUID of the domain of the computer. For more information, see [\[MS-NRPC\]](#) section 2.2.1.2.1.
- Set the machineGUID to a GUID that uniquely identifies the computer.

3.19.4 Message Processing Events and Sequencing Rules

When an object is marshaled, the [server security envoy \(section 3.19\)](#) MUST contribute a security envoy context property (section [2.2.4.2](#)) to the [OBJREF_EXTENDED \(\[MS-DCOM\] section 2.2.18.7\)](#) instance representing the marshaled object reference ([\[MS-DCOM\] section 3.1.1.5.1](#)). The security envoy property MUST be created as follows:

- The **guidServerDomain** field MUST be set to domainGUID.
- The **guidServerMachine** field MUST be set to machineGUID.

3.19.5 Timer Events

None.

3.19.6 Other Local Events

None.

3.20 Client Transaction Envoy Unmarshaling Details

3.20.1 Abstract Data Model

This section describes a conceptual model of possible data organization that an implementation maintains to participate in this protocol. The described organization is provided to explain how the protocol behaves. This document does not mandate that implementations adhere to this model as long as their external behavior is consistent with that described in this document.

The client transaction envoy unmarshaling maintains the following data structures, one for each [OBJREF_EXTENDED \(section 2.2.4\)](#) object reference unmarshaled by the client:

- A **TransactionStreamID** GUID. This GUID is shared with and initialized by the [Client Root Transaction Object \(section 3.1\)](#) if the client transaction envoy is for a root transaction object. This GUID is shared with and initialized by the [Client Non-Root Transaction Object \(section 3.2\)](#) if the client transaction envoy is for a non-root transaction object.
- A **DtcCapabilities** value, consisting of a set of flags specified in section [2.2.6.1](#). This flag is shared with the [Client Transaction ORPC Extension \(section 3.13\)](#).
- A **TransactionRequiredInORPC** flag. This flag is shared with the Client Transaction ORPC Extension.
- A **WhereaboutsID** GUID. This GUID is shared with the Client Transaction ORPC Extension.
- A [Transaction Envoy Property \(section 2.2.4.1\)](#) value. This value is shared with the client transaction envoy marshaling.

In addition, the client transaction envoy unmarshaling maintains the following global table:

A **Whereabouts Table**. A table of entries for [OBJREF_EXTENDED](#) object references unmarshaled by the client where each entry contains a **WhereaboutsID** GUID and the [SWhereabouts](#) identified by the **WhereaboutsID** GUID. The table is shared with the Client Transaction ORPC Extension.

3.20.2 Timers

None.

3.20.3 Initialization

Upon unmarshaling an [OBJREF_EXTENDED \(section 2.2.4\)](#) object reference, the client transaction envoy unmarshaling MUST do the following:

- Create the data structures described in section [3.20.1](#).
- Set the TransactionRequiredInORPC flag to FALSE if the OBJREF_EXTENDED structure does not contain a [Transaction Envoy Property \(section 2.2.4.1\)](#) and stop further processing.
- Read the **StreamID** GUID from the Transaction Envoy Property and compare it with the **TransactionStreamID** GUID. If they do not match, the client MUST set the TransactionRequiredInORPC flag to FALSE and MUST stop further processing.
- Otherwise, set the TransactionRequiredInORPC flag to TRUE.
- Copy the Transaction Envoy Property contained in the OBJREF_EXTENDED structure to the Transaction Envoy Property value.
- Set the DtcCap_CanTransmit bit (section [2.2.6.1](#)) in the DtcCapabilities value if the local DTCO transaction manager implementation supports the [Propagation Token \(\[MS-DTCO\] section 2.2.5.4\)](#) method of sending transactions and if the DtcCap_CanTransmit bit is set in the **DtcCapabilities** field of the Transaction Envoy Property contained in the OBJREF_EXTENDED structure.
- Set the DtcCap_CanExport bit (section [2.2.6.1](#)) in the DtcCapabilities value if the local DTCO transaction manager implementation supports the [STxInfo \(\[MS-DTCO\] section 2.2.5.10\)](#) method of sending transactions and if the DtcCap_CanExport bit is set in the **DtcCapabilities** field of the Transaction Envoy Property contained in the OBJREF_EXTENDED structure.
- If the only bit set in the DtcCapabilities value is DtcCap_CanExport, set the **WhereaboutsID** GUID to the **WhereaboutsID** field of the Transaction Envoy Property contained in the OBJREF_EXTENDED structure and look it up in the Whereabouts table. If the entry is not found in the table, create an entry with the **WhereaboutsID** GUID and an empty [SWhereabouts \(\[MS-DTCO\] section 2.2.5.11\)](#) and add the entry to the Whereabouts table.

3.20.4 Message Processing Events and Sequencing Rules

None.

3.20.5 Timer Events

None.

3.20.6 Other Local Events

None.

3.21 Client Transaction Envoy Marshaling Details

3.21.1 Abstract Data Model

This section describes a conceptual model of possible data organization that an implementation maintains to participate in this protocol. The described organization is provided to explain how the protocol behaves. This document does not mandate that implementations adhere to this model as long as their external behavior is consistent with that described in this document.

The client transaction envoy marshaling maintains the following data structure for each object reference unmarshaled by the client:

- A [Transaction Envoy Property \(section 2.2.4.1\)](#) value. This property is shared with and initialized by the [Client Transaction Envoy Unmarshaling \(section 3.20\)](#).

3.21.2 Timers

None.

3.21.3 Initialization

None.

3.21.4 Message Processing Events and Sequencing Rules

When marshaling of an [OBJREF_EXTENDED](#) object reference, the client transaction envoy marshaling MUST do the following:

- Copy the [Transaction Envoy Property](#) value to the OBJREF_EXTENDED structure.

3.21.5 Timer Events

None.

3.21.6 Other Local Events

None.

3.22 Client Security Unmarshaling Details

3.22.1 Abstract Data Model

This section describes a conceptual model of possible data organization that an implementation maintains to participate in this protocol. The described organization is provided to explain how the protocol behaves. This document does not mandate that implementations adhere to this model as long as their external behavior is consistent with that described in this document.

The client security envoy maintains the following GUID data structures, one for each OBJREF_EXTENDED object reference unmarshaled by the client:

- domainGUID, which identifies the domain of the computer of the object reference.
- machineGUID, which identifies the computer of the object reference.

3.22.2 Timers

None.

3.22.3 Initialization

None.

3.22.4 Message Processing Events and Sequencing Rules

When an [OBJREF_EXTENDED](#) ([\[MS-DCOM\]](#) section 2.2.18.7) object reference is unmarshaled ([\[MS-DCOM\]](#) section 3.2.4.1.2), the client security envoy MUST associate the following with the object reference:

- The **domainGUID** field MUST be set to guidServerDomain from the security envoy property.
- The **guidServerMachine** field MUST be set to guidServerMachine from the security envoy property.

3.22.5 Timer Events

None.

3.22.6 Other Local Events

None.

3.23 ITransactionStream Server Details

3.23.1 Abstract Data Model

This section describes a conceptual model of possible data organization that an implementation maintains to participate in this protocol. The described organization is provided to explain how the protocol behaves. This document does not mandate that implementations adhere to this model as long as their external behavior is consistent with that described in this document.

An [ITransactionStream Server](#) ([section 3.23](#)) maintains the following data structures:

- A **CurrentTSN** value. This value is shared with and initialized by the [Client Root Transaction Object](#) ([section 3.1](#)).
- A **DtcCapabilities** value, consisting of a set of flags as specified in [section 2.2.6.1](#). This value is shared with and initialized by the Client Root Transaction Object.

3.23.2 Timers

None.

3.23.3 Initialization

None.

3.23.4 Message Processing Events and Sequencing Rules

Methods in RPC Opnum Order

Method	Description
GetSegAndTxViaExport	Returns an SWhereabouts and an STxInfo, and updates the client's currently known TSN. Opnum: 3
GetSegAndTxViaTransmitter	Returns a Propagation-Token (as specified in [MS-DTCO]) and updates

Method	Description
	the client's currently known TSN. Opnum: 4
GetTxViaExport	Returns an STxInfo (as specified in [MS-DTCO]) for the requested TSN, or returns an error. Opnum: 5
GetTxViaTransmitter	Returns a Propagation-Token (as specified in [MS-DTCO]) for the specified TSN, or returns an error. Opnum: 6

The methods MUST NOT throw exceptions.

3.23.4.1 ITransactionStream::GetSeqAndTxViaExport (Opnum 3)

This method returns the [STxInfo](#) ([MS-DTCO] section 2.2.5.10) of the currently active transaction and the CurrentTSN value.

```
HRESULT GetSeqAndTxViaExport(
    [in] unsigned long ulKnownSeq,
    [in] unsigned long ulcbWhereabouts,
    [in, size_is(ulcbWhereabouts)] BYTE* rgbWhereabouts,
    [out] unsigned long* pulCurrentSeq,
    [out] unsigned long* pulcbExportCookie,
    [out, size_is(*pulcbExportCookie)]
    BYTE** prgbExportCookie
);
```

ulKnownSeq: The caller's CurrentTSN value of the currently active transaction known by the client.

ulcbWhereabouts: The unsigned size, in bytes, of *rgbWhereabouts*.

rgbWhereabouts: The [SWhereabouts](#) instance ([MS-DTCO] section 2.2.5.11) of the caller's local DTCO transaction manager implementation.

pulCurrentSeq: The TSN of the currently active transaction.

pulcbExportCookie: The unsigned size, in bytes, of *prgbExportCookie*.

prgbExportCookie: An STxInfo of the currently active transaction (as specified in [MS-DTCO] section 2.2.5.10).

Return Values: The method MUST return a positive value or zero, to indicate successful completion, or a negative value to indicate failure. The client MUST treat any negative return value as a fatal error.

When processing this ORPC call, the [ITransactionStream Server \(section 3.23\)](#) MUST do the following:

- If the DtcCap_CanExport bit is not set in the DtcCapabilities value, it MUST return CO_E_NOT_SUPPORTED.
- If *ulKnownSeq* is the same as the CurrentTSN value, the ITransactionStream Server MUST:

- Set *pulCurrentSeq* to *ulKnownSeq*.
- Set *pulcbExportCookie* to zero.
- Set *prgbExportCookie* to NULL.
- Otherwise, the ITransactionStream Server MUST:
 - Set *pulCurrentSeq* to the CurrentTSN value.
 - Set *pulcbExportCookie* to the size of *prgbExportCookie*.
 - Copy the STxInfo of the currently active transaction to the *prgbExportCookie* out parameter.

3.23.4.2 ITransactionStream::GetSeqAndTxViaTransmitter (Opnum 4)

This method returns the [Propagation Token](#) (as specified in [\[MS-DTCO\]](#) section 2.2.5.4) of the currently active transaction and the **CurrentTSN** value.

```
HRESULT GetSeqAndTxViaTransmitter(
    [in] unsigned long ulKnownSeq,
    [out] unsigned long* pulCurrentSeq,
    [out] unsigned long* pulcbTransmitterBuffer,
    [out, size_is(*pulcbTransmitterBuffer)]
    BYTE** prgbTransmitterBuffer
);
```

ulKnownSeq: The caller's CurrentTSN value of the currently active transaction.

pulCurrentSeq: The TSN of the currently active transaction.

pulcbTransmitterBuffer: The unsigned size, in bytes, of *prgbTransmitterBuffer*.

prgbTransmitterBuffer: A Propagation_Token of the currently active transaction.

Return Values: The method MUST return a positive value or zero, to indicate successful completion, or a negative value to indicate failure. The client MUST treat any negative return value as a fatal error.

When processing this ORPC call, the [ITransactionStream Server](#) MUST do the following:

- If the DtcCap_CanTransmit bit is not set in the **DtcCapabilities** value, it MUST return CO_E_NOT_SUPPORTED.
- If *ulKnownSeq* is the same as the **CurrentTSN** value, the ITransactionStream Server MUST do the following:
 - Set *pulCurrentSeq* to *ulKnownSeq*.
 - Set *pulcbTransmitterBuffer* to zero.
 - Set *prgbTransmitterBuffer* to NULL.
- Otherwise, the ITransactionStream Server MUST do the following:
 - Set *pulCurrentSeq* to the **CurrentTSN** value.
 - Set *pulcbTransmitterBuffer* to the size of *prgbTransmitterBuffer*.

- Copy the `Propagation_Token` of the currently active transaction to the `prgbTransmitterBuffer` out parameter.

3.23.4.3 ITransactionStream::GetTxViaExport (Opnum 5)

This method returns the [STxInfo](#) instance (as specified in [\[MS-DTCO\]](#) section 2.2.5.10) of the currently active transaction or returns an error if the specified TSN is not the same as the `CurrentTSN` value.

```
HRESULT GetTxViaExport(
    [in] unsigned long ulRequestSeq,
    [in] unsigned long ulcbWhereabouts,
    [in, size_is(ulcbWhereabouts)] BYTE* rgbWhereabouts,
    [out] unsigned long* pulcbExportCookie,
    [out, size_is(*pulcbExportCookie)]
    BYTE** prgbExportCookie
);
```

ulRequestSeq: The caller's `CurrentTSN` value of the currently active transaction.

ulcbWhereabouts: The unsigned size, in bytes, of `rgbWhereabouts`.

rgbWhereabouts: The [SWhereabouts](#) instance ([\[MS-DTCO\]](#) section 2.2.5.11) of the caller's local DTCO transaction manager implementation.

pulcbExportCookie: The unsigned size, in bytes, of `prgbExportCookie`.

prgbExportCookie: An [STxInfo](#) instance of the currently active transaction (as specified in [\[MS-DTCO\]](#) section 2.2.5.10).

Return Values: The method MUST return a positive value or zero to indicate successful completion, or a negative value to indicate failure. The client MUST treat any negative return value as a fatal error.

When processing this ORPC call, if `ulRequestSeq` is the same as the `CurrentTSN` value, the [ITransactionStream Server \(section 3.23\)](#) MUST do the following:

- Set `pulcbExportCookie` to the size of `prgbExportCookie`.
- Copy [STxInfo](#) of the currently active transaction to the `prgbExportCookie` out parameter.

Otherwise, the [ITransactionStream Server](#) MUST return `CONTEXT_E_ABORTED`.

3.23.4.4 ITransactionStream::GetTxViaTransmitter (Opnum 6)

This method returns the [Propagation Token](#) ([\[MS-DTCO\]](#) section 2.2.5.4) of the currently active transaction, or returns an error if the specified TSN is not the same as the `CurrentTSN` value.

```
HRESULT GetTxViaTransmitter(
    [in] unsigned long ulRequestSeq,
    [out] unsigned long* pulcbTransmitterBuffer,
    [out, size_is(*pulcbTransmitterBuffer)]
    BYTE** prgbTransmitterBuffer
);
```

ulRequestSeq: The caller's TSN of the currently active transaction.

pulcbTransmitterBuffer: The unsigned size, in bytes, of *prgbTransmitterBuffer*.

prgbTransmitterBuffer: A Propagation-Token of the currently active transaction.

Return Values: The method MUST return a positive value or zero to indicate successful completion, or a negative value to indicate failure. The client MUST treat any negative return value as a fatal error.

When processing this ORPC call, if *ulRequestSeq* is the same as the CurrentTSN, the [ITransactionStream Server \(section 3.23\)](#) MUST:

- Set *pulcbExportCookie* to the size of *prgbExportCookie*.
- Copy Propagation-Token of the currently active transaction to the *prgbExportCookie* out parameter.

Otherwise, the ITransactionStream Server MUST return CONTEXT_E_ABORTED.

3.23.5 Timer Events

None.

3.23.6 Other Local Events

None.

4 Protocol Examples

4.1 Client to RootTxn to Non-RootTxn Example

Figure 8 shows a sequence for a client that activates and then calls a root txn object; the root txn object activates and calls a non-root txn object, and returns a reference to the non-root txn object back to the client. The client then makes a call directly to the non-root txn object, then releases its references to both root and non-root objects.

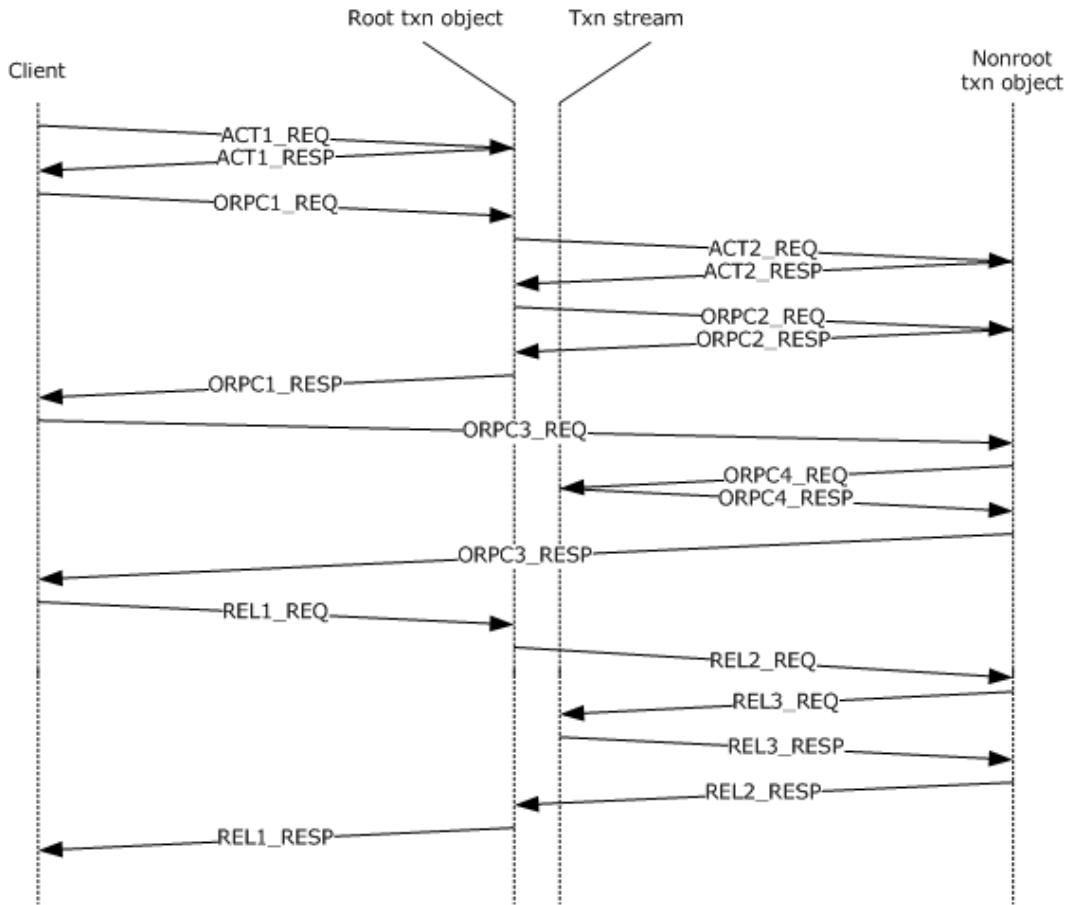


Figure 7: Client to rootTxn to non-rootTxn

ACT1_REQ: The client sends an activation request for the root txn object. The client is not an object, so the activation request does not contain any context properties.

During activation, the root txn object initializes itself and its associated transaction stream. In addition, the object is configured with an activity context property with an INFINITE activity time-out. The object is then marshaled as described in section 3.18, including a transaction envoy context property in the OBJREF_EXTENDED instance.

ACT1_RESP: The client receives the activation results, unmarshals the reference to the root object, and determines that the returned OBJREF contains a transaction envoy context property; however, since the client is not running within a transaction, it takes no special action.

ORPC1_REQ: The client makes a call to the root txn object. There are no ORPC extensions sent on this call, because the client previously discarded the transaction envoy property after unmarshaling the ACT1_RESP message.

At call entry to the root object, the root object's activity context property first checks to see that no other calls with different DCOM causality IDs are already executing in the object (see section [3.17](#)). Since there are none, the call executes without delay.

ACT2_REQ: The root txn object activates the non-root txn object. As part of the activation, the root txn object sends a transaction context property (see section [2.2.2.1](#)) that contains a reference to its associated transaction stream, and an activity context property (see section [2.2.2.2](#)).

During activation, the non-root txn object is created and initialized using the same transaction and the same activity as the root txn object. The non-root txn object saves a reference to the root object's transaction stream; marshals itself, as described in section [3.18](#), including a transaction envoy context property in the OBJREF_EXTENDED instance; and configures its server activity context property using the activity context property supplied during the activation. The non-root object is then marshaled as described in section [3.18](#), including a transaction envoy context property in the OBJREF_EXTENDED.

ACT2_RESP: The root txn object unmarshals the reference to the non-root txn object; detects the returned transaction envoy context property; notes that both it and the non-root txn object are running in the same transaction; and adds the returned envoy property to its table for action on subsequent calls.

ORPC2_REQ: The root txn object makes a call to the non-root txn object. Since the root object has a transaction envoy property for this reference, it includes a Transaction ORPC extension on the call as described in section [2.2.3.1.1](#).

The non-root txn object receives the call and goes through the steps described in section [3.15](#) to ensure that it is running within a valid transaction. In addition, at call entry to the non-root object, the root object's activity context property first checks to see that no other calls with different DCOM causality IDs are already executing in the object (see section [3.17](#)). Since there are none, the call executes without delay.

ORPC2_RESP: The non-root txn object returns to the root txn object. This response carries a Transaction ORPC extension on the return, as described in section [2.2.3.1.2](#).

ORPC1_RESP: The root txn object returns to the client. One of the return parameters contains a reference to the non-root txn object, so that the client can call the non-root txn object directly in future.

The client unmarshals the reference to the non-root txn object. As in ACT1_RESP, the client ignores the transaction envoy context property coming from the non-root txn object.

ORPC3_REQ: The client makes an ORPC call directly to the non-root txn object. There are no ORPC extensions sent on this call.

ORPC4_REQ: The non-root txn object receives the call from the client and determines that no Transaction ORPC Call Extension is present. To ensure that it is running within a valid transaction, it makes an ORPC call to the root object's associated transaction stream, using either the *GetSeqAndTxViaExport* (see section [3.23.4.1](#)) or the *GetSeqAndTxViaTransmitter* (see section [3.23.4.2](#)) method.

ORPC4_RESP: The transaction stream determines that the TSN specified by the non-root txn object is still valid and returns a success code.

ORPC3_RESP: The non-root txn object returns to the client. Since ORPC3_REQ did not have a Transaction ORPC Call extension, the response also does not have a Transaction ORPC Return extension.

REL1_REQ: The client releases its reference to the root txn object. Since this is the last reference on the root txn object, it is destroyed.

REL2_REQ: The root txn object releases its reference on the non-root txn object.

REL3_REQ: The non-root txn object releases its references on the transaction stream.

REL3_RESP: Returns from the release call on the transaction stream.

REL2_RESP: Returns from the release call on the non-root txn object.

REL1_RESP: Returns from the release call on the root txn object. Because this is the last release on the root txn object, the transaction is committed at this point before returning.

5 Security

5.1 Security Considerations for Implementers

None.

5.2 Index of Security Parameters

None.

6 Appendix A: Full IDL

For ease of implementation, the full IDL is provided, where "ms-dcom.idl" is the IDL found in [\[MS-DCOM\]](#) Appendix A.

```
import "ms-dcom.idl";
// Disable new Vista MIDL attribute if using an older MIDL compiler
#if __midl < 700
#define disable_consistency_check
#endif
[
    object,
    uuid(97199110-DB2E-11d1-A251-0000F805CA53),
    pointer_default(unique)
]
interface ITransactionStream : IUnknown
{
    HRESULT GetSeqAndTxViaExport (
        [in] unsigned long ulKnownSeq,
        [in] unsigned long ulcbWhereabouts,
        [in, size_is(ulcbWhereabouts)] BYTE* rgbWhereabouts,
        [out] unsigned long* pulCurrentSeq,
        [out] unsigned long* pulcbExportCookie,
        [out, size_is(*pulcbExportCookie)]
        BYTE ** prgbExportCookie);

    HRESULT GetSeqAndTxViaTransmitter (
        [in] unsigned long ulKnownSeq,
        [out] unsigned long* pulCurrentSeq,
        [out] unsigned long* pulcbTransmitterBuffer,
        [out, size_is(*pulcbTransmitterBuffer)]
        BYTE** prgbTransmitterBuffer);

    HRESULT GetTxViaExport (
        [in] unsigned long ulRequestSeq,
        [in] unsigned long ulcbWhereabouts,
        [in, size_is(ulcbWhereabouts)] BYTE* rgbWhereabouts,
        [out] unsigned long* pulcbExportCookie,
        [out, size_is(*pulcbExportCookie)]
        BYTE** prgbExportCookie);

    HRESULT GetTxViaTransmitter (
        [in] unsigned long ulRequestSeq,
        [out] unsigned long* pulcbTransmitterBuffer,
        [out, size_is(*pulcbTransmitterBuffer)]
        BYTE** prgbTransmitterBuffer);
};
```

7 Appendix B: Product Behavior

The information in this specification is applicable to the following Microsoft products or supplemental software. References to product versions include released service packs:

- Windows 2000 operating system
- Windows XP operating system
- Windows Server 2003 operating system
- Windows Vista operating system
- Windows Server 2008 operating system
- Windows 7 operating system
- Windows Server 2008 R2 operating system
- Windows 8 operating system
- Windows Server 2012 operating system
- Windows 8.1 operating system
- Windows Server 2012 R2 operating system

Exceptions, if any, are noted below. If a service pack or Quick Fix Engineering (QFE) number appears with the product version, behavior changed in that service pack or QFE. The new behavior also applies to subsequent service packs of the product unless otherwise specified. If a product edition appears with the product version, behavior is different in that product edition.

Unless otherwise specified, any statement of optional behavior in this specification that is prescribed using the terms SHOULD or SHOULD NOT implies product behavior in accordance with the SHOULD or SHOULD NOT prescription. Unless otherwise specified, the term MAY implies that the product does not follow the prescription.

[<1> Section 2.2.2.3.1:](#) For historical reasons, Windows will set this field to random values.

[<2> Section 3.9.4:](#) Windows uses an activity time-out of INFINITE by default.

[<3> Section 3.12.4:](#) Windows servers will set this field to the NETBIOS name of the server machine.

[<4> Section 3.12.4:](#) Windows servers will set this field to the NETBIOS name and IPV4 addresses of the server machine.

[<5> Section 3.12.4:](#) Windows servers will set this field to the IPV6 addresses of the server machine.

[<6> Section 3.15.4:](#) Windows servers do not set the TransactionPropRetFlag_DontSend bit in the **m_usFlag** field of the [TransactionPropRetHeader](#) structure

8 Change Tracking

No table of changes is available. The document is either new or has had no changes since its last release.

9 Index

A

Abstract data model

- [client activity activation](#) 45
- [client class factory wrapper activation](#) 47
- [client partition activation](#) 45
- [client security ORPC extension](#) 58
- [client security unmarshaling](#) 72
- [client transaction ORPC extension](#) 54
- [client transaction unmarshaling](#) 70
- [client user property activation](#) 46
- [ITransactionStream server](#) 73
- [non-root transaction object activation](#) 44
- [overview](#) 41
- [server activity activation](#) 50
- [server activity ORPC processing](#) 66
- [server class factory wrapper activation](#) 53
- [server partition activation](#) 51
- [server security envoy marshaling](#) 69
- [server security ORPC extension](#) 66
- [server transaction activation](#) 48
- [server transaction Marshaling](#) 68
- [server transaction ORPC extension](#) 61
- [server user property activation](#) 52

Activation context properties 21

Activations

- [client context](#) 13
- [context properties](#) 12
- [prototype context](#) 13

Activities 18

Activity activation - client

- [abstract data model](#) 45
- [initialization](#) 45
- [message processing](#) 45
- [sequencing rules](#) 45
- [timer events](#) 45
- [timers](#) 45

Activity activation - server

- [abstract data model](#) 50
- [initialization](#) 51
- [message processing](#) 51
- [sequencing rules](#) 51
- [timer events](#) 51
- [timers](#) 51

Activity context property 25

Activity Context Property packet 25

Applicability 19

C

Capability negotiation 19

Change tracking 84

Class factory wrapper activation - client

- [abstract data model](#) 47
- [initialization](#) 47
- [message processing](#) 47
- [sequencing rules](#) 47
- [timer events](#) 48
- [timers](#) 47

Class factory wrapper activation - server

- [abstract data model](#) 53
- [initialization](#) 53
- [message processing](#) 53
- [sequencing rules](#) 53
- [timer events](#) 54
- [timers](#) 53

Class Factory Wrapper packet 37

Client activity activation

- [abstract data model](#) 45
- [initialization](#) 45
- [local events](#) 45
- [message processing](#) 45
- [sequencing rules](#) 45
- [timer events](#) 45
- [timers](#) 45

Client class factory wrapper activation

- [abstract data model](#) 47
- [initialization](#) 47
- [local events](#) 48
- [message processing](#) 47
- [sequencing rules](#) 47
- [timer events](#) 48
- [timers](#) 47

Client context within activations 13

Client partition activation

- [abstract data model](#) 45
- [initialization](#) 45
- [local events](#) 46
- [message processing](#) 46
- [sequencing rules](#) 46
- [timer events](#) 46
- [timers](#) 45

Client security ORPC extension

- [abstract data model](#) 58
- [initialization](#) 58
- [local events](#) 61
- [message processing](#) 58
- [sequencing rules](#) 58
- [timer events](#) 61
- [timers](#) 58

Client security unmarshaling

- [abstract data model](#) 72
- [initialization](#) 72
- [local events](#) 73
- [message processing](#) 73
- [sequencing rules](#) 73
- [timer events](#) 73
- [timers](#) 72

Client to RootTxn to NonrootTxn 78

Client transaction ORPC extension

- [abstract data model](#) 54
- [initialization](#) 54
- [local events](#) 57
- [message processing](#) 55
- [message processing - diagram](#) 56
- [sequencing rules](#) 55
- [sequencing rules - diagram](#) 56
- [timer events](#) 57

- [timers](#) 54
- Client transaction unmarshaling
 - [abstract data model](#) 70
 - [initialization](#) 71
 - [local events](#) 71
 - [message processing](#) 71
 - [sequencing rules](#) 71
 - [timer events](#) 71
 - [timers](#) 70
- Client user property activation
 - [abstract data model](#) 46
 - [initialization](#) 46
 - [message processing](#) 46
 - [sequencing rules](#) 46
 - [timer events](#) 46
 - [timers](#) 46
- [Client user property activation - overview](#) 47
- [Constants](#) 39
- [Context ORPC extensions](#) 27
- Context properties
 - [activations](#) 12
 - [ORPC calls](#) 15
 - [overview](#) 12

D

- Data model - abstract
 - [client activity activation](#) 45
 - [client class factory wrapper activation](#) 47
 - [client partition activation](#) 45
 - [client security ORPC extension](#) 58
 - [client security unmarshaling](#) 72
 - [client transaction ORPC extension](#) 54
 - [client transaction unmarshaling](#) 70
 - [client user property activation](#) 46
 - [ITransactionStream server](#) 73
 - [non-root transaction object activation](#) 44
 - [server activity activation](#) 50
 - [server activity ORPC processing](#) 66
 - [server class factory wrapper activation](#) 53
 - [server partition activation](#) 51
 - [server security envoy marshaling](#) 69
 - [server security ORPC extension](#) 66
 - [server transaction activation](#) 48
 - [server transaction marshaling](#) 68
 - [server transaction ORPC extension](#) 61
 - [server user property activation](#) 52
- [Data types](#) 21
- Diagram
 - client transaction ORPC extension
 - [message processing](#) 56
 - [sequencing rules](#) 56
 - [context properties and activations](#) 14
 - [context properties and marshaling](#) 15
 - [context properties and ORPC calls](#) 16
 - [transactions](#) 17
- [DTC capabilities](#) 39

E

- [Examples](#) 78

F

- [Fields - vendor-extensible](#) 19
- [Full IDL](#) 82

G

- [GetSeqAndTxViaExport method](#) 74
- [GetSeqAndTxViaTransmitter method](#) 75
- [GetTxViaExport method](#) 76
- [GetTxViaTransmitter method](#) 76
- [Glossary](#) 10

I

- [IDL](#) 82
- [Implementer - security considerations](#) 81
- [Index of security parameters](#) 81
- [Informative references](#) 11
- Initialization
 - [client activity activation](#) 45
 - [client class factory wrapper activation](#) 47
 - [client partition activation](#) 45
 - [client security ORPC extension](#) 58
 - [client security unmarshaling](#) 72
 - [client transaction ORPC extension](#) 54
 - [client transaction unmarshaling](#) 71
 - [client user property activation](#) 46
 - [ITransactionStream server](#) 73
 - [non-root transaction object activation](#) 44
 - [overview](#) 42
 - [server activity activation](#) 51
 - [server activity ORPC processing](#) 67
 - [server class factory wrapper activation](#) 53
 - [server partition activation](#) 51
 - [server security envoy marshaling](#) 69
 - [server security ORPC extension](#) 66
 - [server transaction activation](#) 48
 - [server transaction marshaling](#) 68
 - [server transaction ORPC extension](#) 61
 - [server user property activation](#) 52
- [Introduction](#) 10
- ITransactionStream server
 - [abstract data model](#) 73
 - [initialization](#) 73
 - [local events](#) 77
 - [message processing](#) 73
 - [sequencing rules](#) 73
 - [timer events](#) 77
 - [timers](#) 73

L

- [LengthPrefixedName packet](#) 21
- Local events
 - [client activity activation](#) 45
 - [client class factory wrapper activation](#) 48
 - [client partition activation](#) 46
 - [client security ORPC extension](#) 61
 - [client security unmarshaling](#) 73
 - [client transaction ORPC extension](#) 57
 - [client transaction unmarshaling](#) 71

- [ITransactionStream server](#) 77
- [non-root transaction object activation](#) 44
- [server activity activation](#) 51
- [server activity ORPC processing](#) 68
- [server class factory wrapper activation](#) 54
- [server partition activation](#) 52
- [server security envoy marshaling](#) 70
- [server security ORPC extension](#) 66
- [server transaction activation](#) 49
- [server transaction marshaling](#) 69
- [server transaction ORPC extension](#) 65
- [server user property activation](#) 52

M

[Marshaling](#) 14

Message processing

- [client activity activation](#) 45
- [client class factory wrapper activation](#) 47
- [client partition activation](#) 46
- [client security ORPC extension](#) 58
- [client security unmarshaling](#) 73
- [client transaction ORPC extension](#) 55
- [client transaction unmarshaling](#) 71
- [client user property activation](#) 46
- [ITransactionStream server](#) 73
- [non-root transaction object activation](#) 44
- [overview](#) 42
- [server activity activation](#) 51
- [server activity ORPC processing](#) 67
- [server class factory wrapper activation](#) 53
- [server partition activation](#) 52
- [server security envoy marshaling](#) 70
- [server security ORPC extension](#) 66
- [server transaction activation](#) 48
- [server transaction marshaling](#) 69
- [server transaction ORPC extension](#) 62
- [server user property activation](#) 52

Messages

- [overview](#) 21
- [transport](#) 21

[MS-DTC transaction propagation methods](#) 17

N

[Non-root transaction object](#) 17

Non-root transaction object activation

- [abstract data model](#) 44
- [initialization](#) 44
- [local events](#) 44
- [message processing](#) 44
- [sequencing rules](#) 44
- [timer events](#) 44
- [timers](#) 44

[Normative references](#) 11

O

[OBJREF_EXTENDED context properties](#) 35

[ORPC calls](#) 15

Overview

- [abstract data model](#) 41

- [client user property activation](#) 47
- [initialization](#) 42
- [message processing](#) 42
- [sequencing rules](#) 42
- [timer events](#) 43
- [timers](#) 42

[Overview \(synopsis\)](#) 12

P

[Parameters - security index](#) 81

Partition activation - client

- [abstract data model](#) 45
- [initialization](#) 45
- [message processing](#) 46
- [sequencing rules](#) 46
- [timer events](#) 46
- [timers](#) 45

Partition activation - server

- [abstract data model](#) 51
- [initialization](#) 51
- [message processing](#) 52
- [sequencing rules](#) 52
- [timer events](#) 52
- [timers](#) 51

[Partitions](#) 18

[Preconditions](#) 19

[Prerequisites](#) 19

[Product behavior](#) 83

[Prototype context within activations](#) 13

R

References

- [informative](#) 11
- [normative](#) 11

[Relationship to other protocols](#) 19

[Root transaction object](#) 16

S

Security

- [implementer considerations](#) 81
- [ORPC extension](#) 31
- [parameter index](#) 81
- [property types](#) 32
- [transactions](#) 18

Security envoy marshaling - server

- [abstract data model](#) 69
- [initialization](#) 69
- [message processing](#) 70
- [sequencing rules](#) 70
- [timer events](#) 70
- [timers](#) 69

Security ORPC extension - client

- [abstract data model](#) 58
- [initialization](#) 58
- [message processing](#) 58
- [sequencing rules](#) 58
- [timer events](#) 61
- [timers](#) 58

Security ORPC extension - server

- [abstract data model](#) 66
- [initialization](#) 66
- [message processing](#) 66
- [sequencing rules](#) 66
- [timer events](#) 66
- [timers](#) 66
- Security unmarshaling - client
 - [abstract data model](#) 72
 - [initialization](#) 72
 - [message processing](#) 73
 - [sequencing rules](#) 73
 - [timer events](#) 73
 - [timers](#) 72
- [Security_Envoy_Property_packet](#) 36
- [Security_ORPC_Extension_packet](#) 34
- [Security_Property_packet](#) 32
- [Security_Property_Collection_Header_packet](#) 33
- [SecurityPropertyCollection_packet](#) 34
- Sequencing rules
 - [client activity activation](#) 45
 - [client class factory wrapper activation](#) 47
 - [client partition activation](#) 46
 - [client security ORPC extension](#) 58
 - [client security unmarshaling](#) 73
 - [client transaction ORPC extension](#) 55
 - [client transaction unmarshaling](#) 71
 - [client user property activation](#) 46
 - [ITransactionStream server](#) 73
 - [non-root transaction object activation](#) 44
 - [overview](#) 42
 - [server activity activation](#) 51
 - [server activity ORPC processing](#) 67
 - [server class factory wrapper activation](#) 53
 - [server partition activation](#) 52
 - [server security envoy marshaling](#) 70
 - [server security ORPC extension](#) 66
 - [server transaction activation](#) 48
 - [server transaction marshaling](#) 69
 - [server transaction ORPC extension](#) 62
 - [server user property activation](#) 52
- Server - ITransactionStream
 - [abstract data model](#) 73
 - [initialization](#) 73
 - [message processing](#) 73
 - [sequencing rules](#) 73
 - [timer events](#) 77
 - [timers](#) 73
- Server activity activation
 - [abstract data model](#) 50
 - [initialization](#) 51
 - [local events](#) 51
 - [message processing](#) 51
 - [sequencing rules](#) 51
 - [timer events](#) 51
 - [timers](#) 51
- Server activity ORPC processing
 - [abstract data model](#) 66
 - [initialization](#) 67
 - [local events](#) 68
 - [message processing](#) 67
 - [sequencing rules](#) 67
- [timer events](#) 68
- [timers](#) 67
- Server class factory wrapper activation
 - [abstract data model](#) 53
 - [initialization](#) 53
 - [local events](#) 54
 - [message processing](#) 53
 - [sequencing rules](#) 53
 - [timer events](#) 54
 - [timers](#) 53
- Server partition activation
 - [abstract data model](#) 51
 - [initialization](#) 51
 - [local events](#) 52
 - [message processing](#) 52
 - [sequencing rules](#) 52
 - [timer events](#) 52
 - [timers](#) 51
- Server security envoy marshaling
 - [abstract data model](#) 69
 - [initialization](#) 69
 - [local events](#) 70
 - [message processing](#) 70
 - [sequencing rules](#) 70
 - [timer events](#) 70
 - [timers](#) 69
- Server security ORPC extension
 - [abstract data model](#) 66
 - [initialization](#) 66
 - [local events](#) 66
 - [message processing](#) 66
 - [sequencing rules](#) 66
 - [timer events](#) 66
 - [timers](#) 66
- Server transaction activation
 - [abstract data model](#) 48
 - [initialization](#) 48
 - [local events](#) 49
 - [message processing](#) 48
 - [sequencing rules](#) 48
 - [timer events](#) 48
 - [timers](#) 48
- Server transaction marshaling
 - [abstract data model](#) 68
 - [initialization](#) 68
 - [local events](#) 69
 - [message processing](#) 69
 - [sequencing rules](#) 69
 - [timer events](#) 69
 - [timers](#) 68
- Server transaction ORPC extension
 - [abstract data model](#) 61
 - [initialization](#) 61
 - [local events](#) 65
 - [message processing](#) 62
 - [sequencing rules](#) 62
 - [timer events](#) 65
 - [timers](#) 61
- Server user property activation
 - [abstract data model](#) 52
 - [initialization](#) 52

- [local events](#) 52
- [message processing](#) 52
- [sequencing rules](#) 52
- [timer events](#) 52
- [timers](#) 52

[Standards assignments](#) 19

T

Timer events

- [client activity activation](#) 45
- [client class factory wrapper activation](#) 48
- [client partition activation](#) 46
- [client security ORPC extension](#) 61
- [client security unmarshaling](#) 73
- [client transaction ORPC extension](#) 57
- [client transaction unmarshaling](#) 71
- [client user property activation](#) 46
- [ITransactionStream server](#) 77
- [non-root transaction object activation](#) 44
- [overview](#) 43
- [server activity activation](#) 51
- [server activity ORPC processing](#) 68
- [server class factory wrapper activation](#) 54
- [server partition activation](#) 52
- [server security envoy marshaling](#) 70
- [server security ORPC extension](#) 66
- [server transaction activation](#) 48
- [server transaction marshaling](#) 69
- [server transaction ORPC extension](#) 65
- [server user property activation](#) 52

Timers

- [client activity activation](#) 45
- [client class factory wrapper activation](#) 47
- [client partition activation](#) 45
- [client security ORPC extension](#) 58
- [client security unmarshaling](#) 72
- [client transaction ORPC extension](#) 54
- [client transaction unmarshaling](#) 70
- [client user property activation](#) 46
- [ITransactionStream server](#) 73
- [non-root transaction object activation](#) 44
- [overview](#) 42
- [server activity activation](#) 51
- [server activity ORPC processing](#) 67
- [server class factory wrapper activation](#) 53
- [server partition activation](#) 51
- [server security envoy marshaling](#) 69
- [server security ORPC extension](#) 66
- [server transaction activation](#) 48
- [server transaction marshaling](#) 68
- [server transaction ORPC extension](#) 61
- [server user property activation](#) 52

[Tracking changes](#) 84

Transaction

- [abort](#) 43
- [commit](#) 43
- [outcome participation](#) 44

Transaction activation - server

- [initialization](#) 48
- [message processing](#) 48
- [sequencing rules](#) 48

- [timer events](#) 48
- [timers](#) 48

[Transaction activation - server - abstract data model](#) 48

[Transaction context property](#) 22

[Transaction isolation levels](#) 40

[Transaction lifetime](#) 17

Transaction marshaling - server

- [abstract data model](#) 68
- [initialization](#) 68
- [message processing](#) 69
- [sequencing rules](#) 69
- [timers](#) 68

Transaction object activation - non-root

- [abstract data model](#) 44
- [initialization](#) 44
- [local events](#) 44
- [message processing](#) 44
- [sequencing rules](#) 44
- [timer events](#) 44
- [timers](#) 44

[Transaction ORPC call extensions](#) 27

Transaction ORPC extension - client

- [abstract data model](#) 54
- [initialization](#) 54
- [message processing](#) 55
- [sequencing rules](#) 55
- [timer events](#) 57
- [timers](#) 54

Transaction ORPC extension - server

- [abstract data model](#) 61
- [initialization](#) 61
- [message processing](#) 62
- [sequencing rules](#) 62
- [timer events](#) 65
- [timers](#) 61

[Transaction ORPC extensions](#) 27

[Transaction ORPC return extensions](#) 30

[Transaction stream](#) 16

Transaction unmarshaling - client

- [abstract data model](#) 70
- [initialization](#) 71
- [message processing](#) 71
- [sequencing rules](#) 71
- [timer events](#) 71
- [timers](#) 70

[Transaction Envoy Property packet](#) 35

[TransactionBuffer packet](#) 24

[TransactionContextPropertyHeader packet](#) 22

[TransactionPropCallExportCookie packet](#) 29

[TransactionPropCallHeader packet](#) 28

[TransactionPropCallTransmitterBuffer packet](#) 29

[TransactionPropRetHeader packet](#) 30

[TransactionPropRetWhereabouts packet](#) 31

Transactions

- [diagram](#) 17
- [MS-DTC transaction propagation methods](#) 17
- [non-root transaction object](#) 17
- [overview](#) 16
- [root transaction object](#) 16
- [transaction lifetime](#) 17

[transaction stream](#) 16
[TransactionStream packet](#) 23
[Transport - message](#) 21

U

User property activation - client

[abstract data model](#) 46
[initialization](#) 46
[message processing](#) 46
[sequencing rules](#) 46
[timer events](#) 46
[timers](#) 46

User property activation - server

[abstract data model](#) 52
[initialization](#) 52
[message processing](#) 52
[sequencing rules](#) 52
[timer events](#) 52
[timers](#) 52

[User defined Context Property packet](#) 25

[User-defined context property](#) 25

[User-defined properties](#) 18

[UserProperty packet](#) 26

V

[Vendor-extensible fields](#) 19

[Versioning](#) 19