

## [MS-CMPO-Diff]:

# MSDTC Connection Manager: OleTx Transports Protocol

---

### Intellectual Property Rights Notice for Open Specifications Documentation

- **Technical Documentation.** Microsoft publishes Open Specifications documentation (“this documentation”) for protocols, file formats, data portability, computer languages, and standards support. Additionally, overview documents cover inter-protocol relationships and interactions.
- **Copyrights.** This documentation is covered by Microsoft copyrights. Regardless of any other terms that are contained in the terms of use for the Microsoft website that hosts this documentation, you can make copies of it in order to develop implementations of the technologies that are described in this documentation and can distribute portions of it in your implementations that use these technologies or in your documentation as necessary to properly document the implementation. You can also distribute in your implementation, with or without modification, any schemas, IDLs, or code samples that are included in the documentation. This permission also applies to any documents that are referenced in the Open Specifications documentation.
- **No Trade Secrets.** Microsoft does not claim any trade secret rights in this documentation.
- **Patents.** Microsoft has patents that might cover your implementations of the technologies described in the Open Specifications documentation. Neither this notice nor Microsoft's delivery of this documentation grants any licenses under those patents or any other Microsoft patents. However, a given Open Specifications document might be covered by the Microsoft [Open Specifications Promise](#) or the [Microsoft Community Promise](#). If you would prefer a written license, or if the technologies described in this documentation are not covered by the Open Specifications Promise or Community Promise, as applicable, patent licenses are available by contacting [iplg@microsoft.com](mailto:iplg@microsoft.com).
- **License Programs.** To see all of the protocols in scope under a specific license program and the associated patents, visit the [Patent Map](#).
- **Trademarks.** The names of companies and products contained in this documentation might be covered by trademarks or similar intellectual property rights. This notice does not grant any licenses under those rights. For a list of Microsoft trademarks, visit [www.microsoft.com/trademarks](http://www.microsoft.com/trademarks).
- **Fictitious Names.** The example companies, organizations, products, domain names, email addresses, logos, people, places, and events that are depicted in this documentation are fictitious. No association with any real company, organization, product, domain name, email address, logo, person, place, or event is intended or should be inferred.

**Reservation of Rights.** All other rights are reserved, and this notice does not grant any rights other than as specifically described above, whether by implication, estoppel, or otherwise.

**Tools.** The Open Specifications documentation does not require the use of Microsoft programming tools or programming environments in order for you to develop an implementation. If you have access to Microsoft programming tools and environments, you are free to take advantage of them. Certain Open Specifications documents are intended for use in conjunction with publicly available standards specifications and network programming art and, as such, assume that the reader either is familiar with the aforementioned material or has immediate access to it.

**Support.** For questions and support, please contact [dochelp@microsoft.com](mailto:dochelp@microsoft.com).

## Revision Summary

Date	Revision History	Revision Class	Comments
4/3/2007	0.01	New	Version 0.01 release
7/3/2007	1.0	Major	MLonghorn+90
7/20/2007	1.1	Minor	Clarified the meaning of the technical content.
8/10/2007	1.1.1	Editorial	Changed language and formatting in the technical content.
9/28/2007	2.0	Major	Made a change to the IDL.
10/23/2007	3.0	Major	Updated and revised the technical content.
11/30/2007	3.0.1	Editorial	Changed language and formatting in the technical content.
1/25/2008	3.0.2	Editorial	Changed language and formatting in the technical content.
3/14/2008	4.0	Major	Updated and revised the technical content.
5/16/2008	4.0.1	Editorial	Changed language and formatting in the technical content.
6/20/2008	5.0	Major	Updated and revised the technical content.
7/25/2008	5.1	Minor	Clarified the meaning of the technical content.
8/29/2008	6.0	Major	Updated and revised the technical content.
10/24/2008	7.0	Major	Updated and revised the technical content.
12/5/2008	8.0	Major	Updated and revised the technical content.
1/16/2009	9.0	Major	Updated and revised the technical content.
2/27/2009	10.0	Major	Updated and revised the technical content.
4/10/2009	11.0	Major	Updated and revised the technical content.
5/22/2009	12.0	Major	Updated and revised the technical content.
7/2/2009	13.0	Major	Updated and revised the technical content.
8/14/2009	13.1	Minor	Clarified the meaning of the technical content.
9/25/2009	14.0	Major	Updated and revised the technical content.
11/6/2009	15.0	Major	Updated and revised the technical content.
12/18/2009	16.0	Major	Updated and revised the technical content.
1/29/2010	17.0	Major	Updated and revised the technical content.
3/12/2010	18.0	Major	Updated and revised the technical content.
4/23/2010	19.0	Major	Updated and revised the technical content.
6/4/2010	20.0	Major	Updated and revised the technical content.
7/16/2010	20.0	None	No changes to the meaning, language, or formatting of the technical content.

<b>Date</b>	<b>Revision History</b>	<b>Revision Class</b>	<b>Comments</b>
8/27/2010	20.0	None	No changes to the meaning, language, or formatting of the technical content.
10/8/2010	20.0	None	No changes to the meaning, language, or formatting of the technical content.
11/19/2010	20.0	None	No changes to the meaning, language, or formatting of the technical content.
1/7/2011	21.0	Major	Updated and revised the technical content.
2/11/2011	22.0	Major	Updated and revised the technical content.
3/25/2011	22.0	None	No changes to the meaning, language, or formatting of the technical content.
5/6/2011	22.0	None	No changes to the meaning, language, or formatting of the technical content.
6/17/2011	22.1	Minor	Clarified the meaning of the technical content.
9/23/2011	22.1	None	No changes to the meaning, language, or formatting of the technical content.
12/16/2011	23.0	Major	Updated and revised the technical content.
3/30/2012	23.0	None	No changes to the meaning, language, or formatting of the technical content.
7/12/2012	23.0	None	No changes to the meaning, language, or formatting of the technical content.
10/25/2012	23.1	Minor	Clarified the meaning of the technical content.
1/31/2013	23.1	None	No changes to the meaning, language, or formatting of the technical content.
8/8/2013	23.2	Minor	Clarified the meaning of the technical content.
11/14/2013	23.2	None	No changes to the meaning, language, or formatting of the technical content.
2/13/2014	23.2	None	No changes to the meaning, language, or formatting of the technical content.
5/15/2014	23.2	None	No changes to the meaning, language, or formatting of the technical content.
6/30/2015	24.0	Major	Significantly changed the technical content.
10/16/2015	24.0	None	No changes to the meaning, language, or formatting of the technical content.
7/14/2016	24.0	None	No changes to the meaning, language, or formatting of the technical content.
6/1/2017	24.0	None	No changes to the meaning, language, or formatting of the technical content.
9/15/2017	25.0	Major	Significantly changed the technical content.
9/12/2018	26.0	Major	Significantly changed the technical content.

Date	Revision History	Revision Class	Comments
4/7/2021	27.0	Major	Significantly changed the technical content.
6/25/2021	28.0	Major	Significantly changed the technical content.
4/23/2024	29.0	Major	Significantly changed the technical content.
7/8/2024	30.0	Major	Significantly changed the technical content.

# Table of Contents

<b>1</b>	<b>Introduction</b>	<b>7</b>
1.1	(Updated Section) Glossary	7
1.2	References	9
1.2.1	Normative References	9
1.2.2	Informative References	10
1.3	Overview	10
1.3.1	(Updated Section) Identifiers and Partner Roles	10
1.3.2	Finding the RPC Endpoint and Constructing a Binding Handle	11
1.3.3	Session Lifecycle	11
1.3.3.1	Establishing a Session	11
1.3.3.2	Negotiating Resources	13
1.3.3.3	Sending and Receiving Messages	13
1.3.3.4	Terminating a Session	14
1.4	Relationship to Other Protocols	14
1.5	Prerequisites/Preconditions	14
1.6	Applicability Statement	15
1.7	Versioning and Capability Negotiation	15
1.8	Vendor-Extensible Fields	15
1.9	Standards Assignments	16
<b>2</b>	<b>Messages</b>	<b>17</b>
2.1	Transport	17
2.1.1	Protocol Sequences	17
2.1.2	Endpoints	17
2.1.3	Security	17
2.2	Common Data Types	17
2.2.1	BIND_INFO_BLOB	18
2.2.2	BIND_VERSION_SET	18
2.2.3	BOUND_VERSION_SET	19
2.2.4	COM_PROTOCOL	20
2.2.5	HRESULT	20
2.2.6	GUID/UUID	20
2.2.7	RESOURCE_TYPE	21
2.2.8	SESSION_RANK	21
2.2.9	TEARDOWN_TYPE	21
2.2.10	Constants Used in Method Definitions	21
<b>3</b>	<b>Protocol Details</b>	<b>22</b>
3.1	Protocol Versioning	22
3.2	Common Details	22
3.2.1	Abstract Data Model	22
3.2.1.1	Partner State	23
3.2.1.2	Session State	24
3.2.1.3	Cleaning Up a Session Object	26
3.2.1.4	(Updated Section) Name Object	27
3.2.1.4.1	(Updated Section) Name Object Comparison	27
3.2.2	Timers	27
3.2.2.1	Session Setup Timer	27
3.2.2.2	Session Teardown Timer	27
3.2.3	Initialization	27
3.2.3.1	Initialization By a Higher-Level Protocol	28
3.2.3.2	Initialization By the Protocol	28
3.2.4	Message Processing Events and Sequencing Rules	28
3.2.5	Timer Events	28
3.2.5.1	Session Setup Timer	28

3.2.5.2	Session Teardown Timer .....	29
3.2.6	Other Local Events.....	29
3.3	IXnRemote Server Details .....	29
3.3.1	Abstract Data Model.....	29
3.3.2	Timers .....	30
3.3.3	Initialization.....	30
3.3.4	Message Processing Events and Sequencing Rules .....	31
3.3.4.1	(Updated Section) Poke (Opnum 0).....	31
3.3.4.2	(Updated Section) BuildContext (Opnum 1).....	34
3.3.4.2.1	Primary .....	36
3.3.4.2.2	Secondary .....	38
3.3.4.3	NegotiateResources (Opnum 2) .....	39
3.3.4.4	SendReceive (Opnum 3) .....	40
3.3.4.5	TearDownContext (Opnum 4) .....	41
3.3.4.5.1	Problem .....	42
3.3.4.5.2	Primary .....	42
3.3.4.5.3	Secondary .....	43
3.3.4.6	BeginTearDown (Opnum 5) .....	43
3.3.4.7	(Updated Section) PokeW (Opnum 6) .....	44
3.3.4.8	(Updated Section) BuildContextW (Opnum 7) .....	45
3.3.5	Timer Events.....	47
3.3.6	Other Local Events.....	47
3.3.6.1	Context Handle Rundown .....	47
3.4	IXnRemote Client Details .....	48
3.4.1	Abstract Data Model.....	48
3.4.2	Timers .....	48
3.4.2.1	RPC Call Timer.....	48
3.4.3	Initialization.....	49
3.4.4	Message Processing Events and Sequencing Rules .....	49
3.4.5	Timer Events.....	49
3.4.5.1	RPC Call Timer.....	49
3.4.6	Other Local Events.....	49
3.4.6.1	New Session Requested .....	49
3.4.6.1.1	Primary .....	49
3.4.6.1.2	Secondary .....	50
3.4.6.2	Forced Session Teardown Requested .....	51
3.4.6.3	Problem Session Teardown Requested .....	51
3.4.6.4	Resource Allocation Requested .....	51
3.4.6.5	Message Send Requested.....	52
<b>4</b>	<b>Protocol Examples .....</b>	<b>53</b>
4.1	Initiating a Session as Primary Partner .....	53
4.2	Initiating a Session as Secondary Partner.....	56
4.3	Negotiating Connection Resources.....	59
4.4	Terminating a Session .....	60
4.4.1	Terminating a Session by a Primary Partner .....	60
4.4.2	Terminating a Session by a Secondary Partner .....	61
<b>5</b>	<b>Security.....</b>	<b>63</b>
5.1	Security Considerations for Implementers .....	63
5.2	Index of Security Parameters .....	63
<b>6</b>	<b>Appendix A: Full IDL.....</b>	<b>64</b>
<b>7</b>	<b>Appendix B: Product Behavior .....</b>	<b>67</b>

# 1 Introduction

This document specifies the MSDTC Connection Manager: OleTx Transports Protocol. The MSDTC Connection Manager: OleTx Transports Protocol is a remote procedure call (RPC) interface for establishing duplex sessions between two partners and for exchanging messages between them. The MSDTC Connection Manager: OleTx Transports Protocol is a framing and message transport protocol and, as such, is designed to have other protocols layered over the basic session, messaging, and security services that it provides.

Sections 1.5, 1.8, 1.9, 2, and 3 of this specification are normative. All other sections and examples in this specification are informative.

## 1.1 (Updated Section) Glossary

This document uses the following terms:

**authenticated RPC call:** An RPC call that establishes authentication information through the use of the `rpc_binding_set_auth_info` procedure defined in [C706], the security provider extension defined in [MS-RPCE] section 2.2.1.1.7, and the authentication levels extension defined in [MS-RPCE] section 2.2.1.1.8.

**client:** A computer on which the remote procedure call (RPC) client is executing.

**connection:** In OleTx, an ordered set of logically related messages. The relationship between the messages is defined by the higher-layer protocol, but they are guaranteed to be delivered exactly one time and in order relative to other messages in the connection.

**contact identifier:** A universally unique identifier (UUID) that identifies a partner in the MSDTC Connection Manager: OleTx Transports Protocol. These UUIDs are frequently converted to and from string representations. This string representation has to follow the format specified in [C706] Appendix A. In addition, the UUIDs have to be compared, as specified in [C706] Appendix A.

**dynamic endpoint:** A network-specific server address that is requested and assigned at run time. For more information, see [C706].

**endpoint:** A remote procedure call (RPC) dynamic endpoint, as specified in [C706], part 4.

**endpoint mapper:** A service on a remote procedure call (RPC) server that maintains a database of dynamic endpoints and allows clients to map an interface/object UUID pair to a local dynamic endpoint. For more information, see [C706].

**globally unique identifier (GUID):** A term used interchangeably with universally unique identifier (UUID) in Microsoft protocol technical documents (TDs). Interchanging the usage of these terms does not imply or require a specific algorithm or mechanism to generate the value. Specifically, the use of this term does not imply or require that the algorithms described in [RFC4122] or [C706] **must have to** be used for generating the **GUID-GUID**. See also **universally unique identifier (UUID)**, **universally unique identifier (UUID)**.

**Interface Definition Language (IDL):** The International Standards Organization (ISO) standard language for specifying the interface for remote procedure calls. For more information, see [C706] section 4.

**level-three protocol:** The MSDTC Connection Manager: OleTx Transports Protocol is designed to be a transport protocol over which two other protocols are layered. When used in this document, level-three protocol refers to the protocol that is layered immediately on top of the level-two protocol, as described in section 2.2.2. [MS-DTCO] is an implementation of a level-three protocol; however, any other custom implementation could be used.

**level-two protocol:** The MSDTC Connection Manager: OleTx Transports Protocol is designed to be a transport protocol over which two other protocols are layered. When used in this document, level-two protocol refers to the protocol that is layered immediately on top of MSDTC Connection Manager: OleTx Transports Protocol, as described in section 2.2.2. [MS-CMP] is an implementation of a level-two protocol; however, any other custom implementation could be used.

**Microsoft Interface Definition Language (MIDL):** The Microsoft implementation and extension of the OSF-DCE Interface Definition Language (IDL). MIDL can also mean the Interface Definition Language (IDL) compiler provided by Microsoft. For more information, see [MS-RPCE].

**NetBIOS name:** A 16-byte address that is used to identify a NetBIOS resource on the network. For more information, see [RFC1001] and [RFC1002].

**Network Data Representation (NDR):** A specification that defines a mapping from Interface Definition Language (IDL) data types onto octet streams. NDR also refers to the runtime environment that implements the mapping facilities (for example, data provided to NDR). For more information, see [MS-RPCE] and [C706] section 14.

**opnum:** An operation number or numeric identifier that is used to identify a specific remote procedure call (RPC) method or a method in an interface. For more information, see [C706] section 12.5.2.12 or [MS-RPCE].

**partner:** A participant in the MSDTC Connection Manager: OleTx Transports Protocol. Each partner has its own contact identifier (CID), and uses the IXnRemote interface to invoke and receive remote procedure calls (RPCs). The IXnRemote interface is described within the full Interface Definition Language (IDL) for [MS-CMPO] in section 6.

**primary partner:** One of the two participants in an MSDTC Connection Manager: OleTx Transports Protocol session. The primary partner is the partner with the larger CID, as specified in [C706] Appendix A, where larger means that the CID of the primary partner follows the CID of the other partner.

**remote procedure call (RPC):** A communication protocol used primarily between client and server. The term has three definitions that are often used interchangeably: a runtime environment providing for communication facilities between computers (the RPC runtime); a set of request-and-response message exchanges between computers (the RPC exchange); and the single message from an RPC exchange (the RPC message). For more information, see [C706].

**RPC protocol sequence:** A character string that represents a valid combination of a remote procedure call (RPC) protocol, a network layer protocol, and a transport layer protocol, as described in [C706] and [MS-RPCE].

**RPC server:** A computer on the network that waits for messages, processes them when they arrive, and sends responses using RPC as its transport acts as the responder during a remote procedure call (RPC) exchange.

**RPC transfer syntax:** A method for encoding messages defined in an Interface Definition Language (IDL) file. Remote procedure call (RPC) can support different encoding methods or transfer syntaxes. For more information, see [C706].

**RPC transport:** The underlying network services used by the remote procedure call (RPC) runtime for communications between network nodes. For more information, see [C706] section 2.

**secondary partner:** One of the two participants in an MSDTC Connection Manager: OleTx Transports Protocol session. The secondary partner is the partner with the smaller CID, as specified in [C706] Appendix A, where smaller means that the CID of the secondary partner precedes the CID of the other partner.



**security level:** An implementation-specific enumeration value that specifies the security behavior of a protocol partner. The generic values of this enumeration are described in [MS-CMPO] section 3.2.1.1.

**security provider:** A pluggable security module that is specified by the protocol layer above the remote procedure call (RPC) layer, and will cause the RPC layer to use this module to secure messages in a communication session with the server. The security provider is sometimes referred to as an authentication service. For more information, see [C706] and [MS-RPCE].

**session:** In OleTx, a transport-level connection between a Transaction Manager and another Distributed Transaction participant over which multiplexed logical connections and messages flow. ~~A session~~ **A session** remains active so long as there are logical connections using it.

**session rank:** The role of a partner in an [MS-CMPO] session, either primary or secondary. The rank is determined by comparing the CIDs of the two partners (as specified in [C706] Appendix A). The partner with the larger CID is the primary partner; the CID of the primary partner follows the CID of the other partner. The partner with the smaller CID is the secondary partner; the CID of the secondary partner precedes the CID of the other partner.

**unauthenticated RPC call:** An RPC call that does not establish authentication information through the use of the `rpc_binding_set_auth_info` procedure defined in [C706], the security provider extension defined in [MS-RPCE] section 2.2.1.1.7, and the authentication levels extension defined in [MS-RPCE] section 2.2.1.1.8.

**universally unique identifier (UUID):** A 128-bit value. UUIDs can be used for multiple purposes, from tagging objects with an extremely short lifetime, to reliably identifying very persistent objects in cross-process communication such as client and server interfaces, manager entry-point vectors, and RPC objects. UUIDs are highly likely to be unique. UUIDs are also known as globally unique identifiers (GUIDs) and these terms are used interchangeably in the Microsoft protocol technical documents (TDs). Interchanging the usage of these terms does not imply or require a specific algorithm or mechanism to generate the UUID. Specifically, the use of this term does not imply or require that the algorithms described in [RFC4122] or [C706] ~~must~~ **has to** be used for generating the UUID.

**MAY, SHOULD, MUST, SHOULD NOT, MUST NOT:** These terms (in all caps) are used as defined in [RFC2119]. All statements of optional behavior use either MAY, SHOULD, or SHOULD NOT.

## 1.2 References

Links to a document in the Microsoft Open Specifications library point to the correct section in the most recently published version of the referenced document. However, because individual documents in the library are not updated at the same time, the section numbers in the documents may not match. You can confirm the correct section numbering by checking the Errata.

### 1.2.1 Normative References

We conduct frequent surveys of the normative references to assure their continued availability. If you have any issue with finding a normative reference, please contact [dochelp@microsoft.com](mailto:dochelp@microsoft.com). We will assist you in finding the relevant information.

[C706] The Open Group, "DCE 1.1: Remote Procedure Call", C706, August 1997, <https://publications.opengroup.org/c706>

**Note** Registration is required to download the document.

[MS-DTYP] Microsoft Corporation, "Windows Data Types".

[MS-ERREF] Microsoft Corporation, "Windows Error Codes".

[MS-RPCE] Microsoft Corporation, "Remote Procedure Call Protocol Extensions".

[NETBEUI] IBM Corporation, "LAN Technical Reference: 802.2 and NetBIOS APIs", 1986, <https://www-40.ibm.com/servers/resourceclink/svc00100.nsf/pages/zos-library-archives?OpenDocument>

[NBF2CIFS] Evans, T. D., "NetBIOS, NetBEUI, NBF, NBT, NBIPX, SMB, CIFS Networking", July 2003, <http://timothydevans.me.uk/n2c.html>

[RFC1001] Network Working Group, "Protocol Standard for a NetBIOS Service on a TCP/UDP Transport: Concepts and Methods", RFC 1001, March 1987, <https://www.rfc-editor.org/info/rfc1001>

[RFC1002] Network Working Group, "Protocol Standard for a NetBIOS Service on a TCP/UDP Transport: Detailed Specifications", STD 19, RFC 1002, March 1987, <https://www.rfc-editor.org/info/rfc1002>

[RFC2119] Bradner, S., "Key words for use in RFCs to Indicate Requirement Levels", BCP 14, RFC 2119, March 1997, <https://www.rfc-editor.org/info/rfc2119>

### 1.2.2 Informative References

[MS-CMOM] Microsoft Corporation, "MSDTC Connection Manager: OleTx Management Protocol".

[MS-CMP] Microsoft Corporation, "MSDTC Connection Manager: OleTx Multiplexing Protocol".

[MS-DTCO] Microsoft Corporation, "MSDTC Connection Manager: OleTx Transaction Protocol".

[MS-SPNG] Microsoft Corporation, "Simple and Protected GSS-API Negotiation Mechanism (SPNEGO) Extension".

## 1.3 Overview

The MSDTC Connection Manager: OleTx Transports Protocol is a peer-to-peer messaging protocol layered over a bidirectional pair of RPC connections. Although there is asymmetry in the setup and teardown of a session, the peers (or partners) are considered equal for the purposes of sending messages to each other.

Together, the pair of RPC connections between the partners is called a session.

### 1.3.1 (Updated Section) Identifiers and Partner Roles

Each of the partners involved in an MSDTC Connection Manager: OleTx Transports Protocol session has a distinct UUID called its contact identifier (CID). Each partner is identified by the combination of its contact identifier (CID) and the NetBIOS name of the computer in which it resides. For more information on NetBIOS, see [NETBEUI], [NBF2CIFS], [RFC1001], and [RFC1002].

There are two slightly different roles in the MSDTC Connection Manager: OleTx Transports Protocol: primary partner and secondary partner. Any partner has the option to take either role, but within a session, one is chosen to be the primary partner, and the other is chosen to be the secondary partner. (A partner's role in the session is also referred to as its session rank.) Each partner in the pair self-determines its role by comparing its contact identifier (CID) with the contact identifier (CID) of the other partner. For comparing UUIDs, see [C706]. The partner that has the larger contact identifier (CID) is the primary partner, and the other partner is the secondary partner (larger means that the CID of the primary partner follows the CID of the other secondary partner).

### 1.3.2 Finding the RPC Endpoint and Constructing a Binding Handle

When a partner is initialized, it creates a dynamic endpoint on each of its supported RPC protocols and registers the interface (IXnRemote) with the RPC endpoint mapper. When a partner performs this registration, it specifies its contact identifier (CID) as the object identifier. See specification [C706].

A partner initiating communication with another partner begins with a name object that contains contact information for a remote partner. The name object is used to create an RPC binding handle (see specification [C706]) to the remote partner's RPC endpoint.

To create an RPC binding handle from a name object, a string binding has to be generated by calling the RPC API routine `rpc_string_binding_compose` (see specification [C706] section 3.1.20) and passing the data from the name object as follows:

1. The `protseq` input value is taken from one of the entries in the Protocols list in the name object. The protocol has to be one of the protocols supported by both partners as specified in section 2.1.1. The protocol is selected from the Protocols list according to the following heuristic:
  1. If both partners are on the same machine, use the value "ncalrpc"; otherwise, proceed to the next step.
  2. If "ncacn\_ip\_tcp" is on the Protocols list, set this protocol as the value; otherwise, proceed to the next step.
  3. If "ncacn\_spx" is on the Protocols list, set this protocol as the value; <1> otherwise, proceed to the next step.
  4. If "ncacn\_nb\_nb" is on the Protocols list, set this protocol as the value; otherwise, proceed to the next step.
  5. The partner fails to generate a string binding.
2. The `network_addr` input value is specified as the Hostname in the name object.
3. The `obj_uuid` input value is specified as the contact identifier (CID) in the name object.
4. Set NULL or empty string("") for the endpoint and options input values.

After generating the string binding, the partner can instantiate a RPC binding handle passing the string binding to the `rpc_binding_from_string_binding` RPC API routine (see specification [C706] section 3.1.20). Because the string binding doesn't define an endpoint field, the returned binding is a partially bound binding handle.

If, for any reason, a partner fails to generate a string binding or to instantiate a RPC binding handle, an implementation-specific error code is returned.

This partial binding is resolved into a full binding by using the RPC endpoint mapper service at the host network address and the full binding handle is used for every call to the remote partner.

### 1.3.3 Session Lifecycle

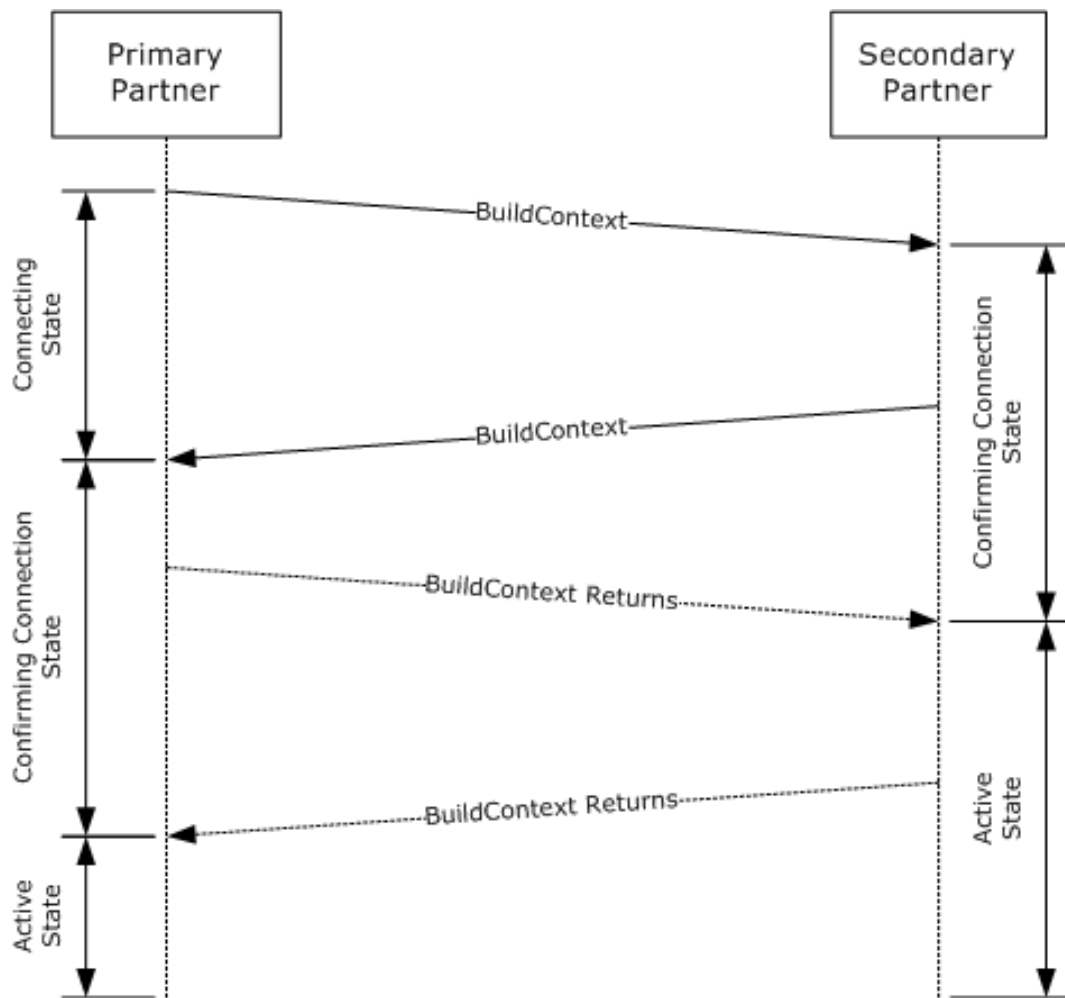
The following sections specify supported MSDTC Connection Manager: OleTx Transports Protocol sequences for implementers.

#### 1.3.3.1 Establishing a Session

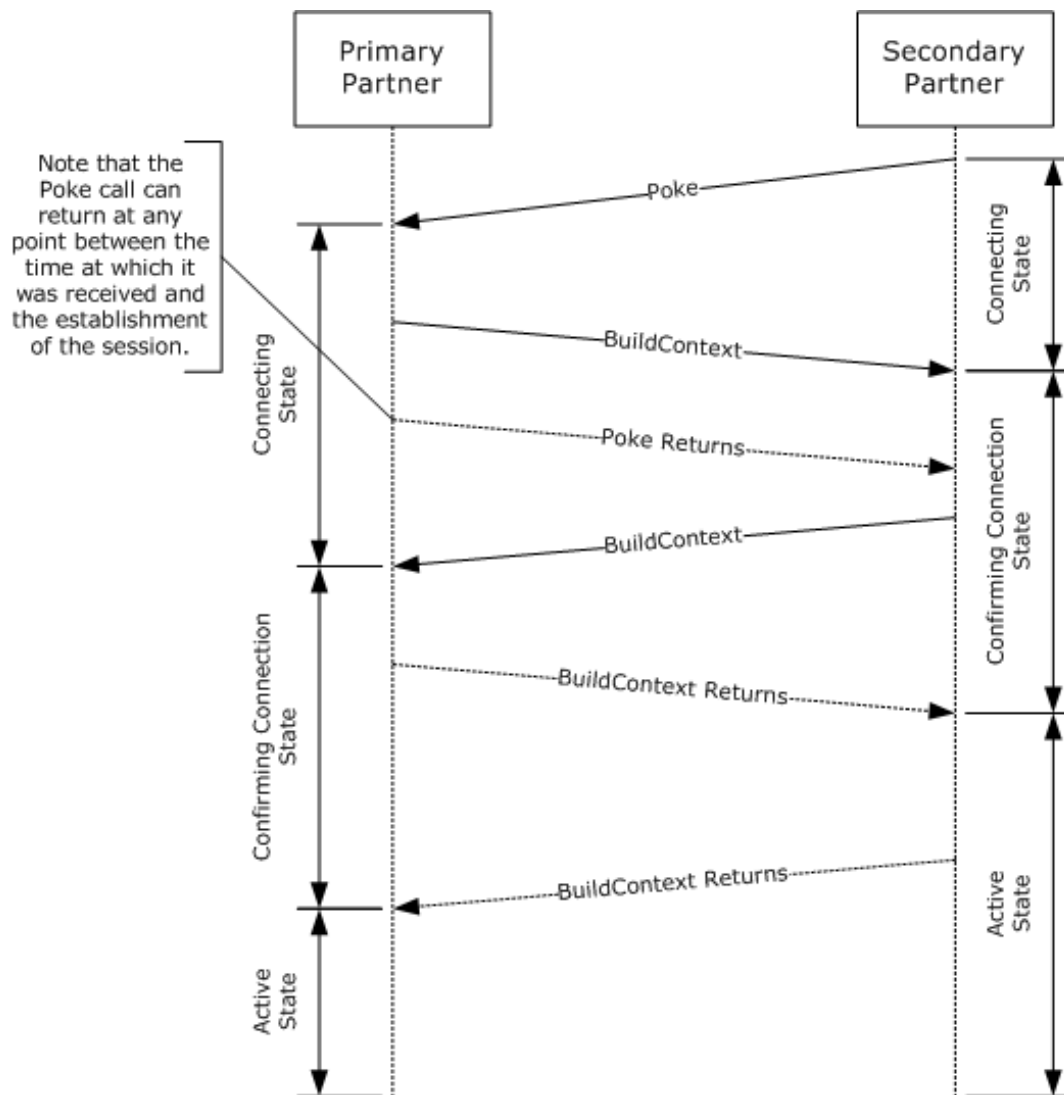
A session is established by making a nested series of synchronous remote procedure call (RPC) between the IXnRemote interfaces of the two partners. These calls are made in order; furthermore, no call begins before the last call completes, unless an error occurs.

Once one of the partners decides to establish a session, the sequence is as follows. If the primary partner decides to establish the session, it proceeds immediately. If the secondary partner decides to establish the session, it establishes an RPC connection to the primary partner and calls either the Poke method or the PokeW method, which has the effect of informing the primary that the secondary wants to establish a session. The primary partner begins the handshake series by establishing an RPC connection to the secondary partner, and by making a BuildContext call or BuildContextW call to the secondary partner. The secondary partner responds to the incoming call by making a corresponding BuildContext callback or BuildContextW callback to the primary (after establishing an RPC connection, if necessary).

The primary partner then verifies the callback, and the chain of procedure calls progresses. The primary partner returns from the BuildContext call or the BuildContextW call that was made by the secondary partner, and then the secondary partner returns from the BuildContext call or the BuildContextW call that was made by the primary. Once these calls have returned, the session has been established. The following sequence diagrams illustrate this process.



**Figure 1: Session initiation by primary partner**



**Figure 2: Session initiation by secondary partner**

### 1.3.3.2 Negotiating Resources

Once a session has been established, a partner has the option to call the `NegotiateResources` method to request that the other partner allocate resources to be associated with the session. The level-two protocol specifies the allocated resource type. This type is defined by the `RESOURCE_TYPE` (section 2.2.7) enumeration.

### 1.3.3.3 Sending and Receiving Messages

Once a session has been established, a partner calls the `SendReceive` method to send messages to the other partner. As with resources, the MSDTC Connection Manager: OleTx Transports Protocol does not define any messages or message formats; the definition of such things is left to the particular protocol being layered over it.

### 1.3.3.4 Terminating a Session

Termination requires a nested series of RPCs between the IXnRemote interfaces of the two partners. Either partner has the option to terminate the session. If the primary partner decides to terminate the session, the session termination proceeds immediately. If the secondary partner decides to terminate the session, it sends a BeginTearDown request to the primary partner, which has the effect of informing the primary to terminate the session.

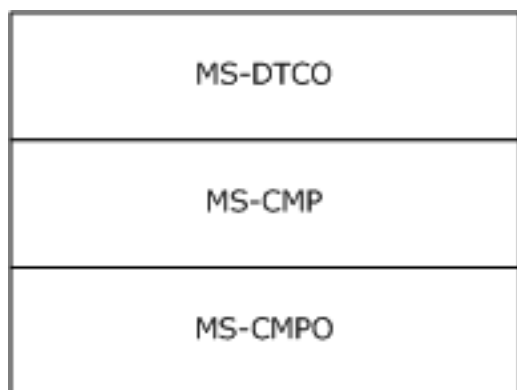
The primary partner begins the handshake series by making a TearDownContext call to the secondary partner. The secondary partner responds by freeing some of its local state and making a corresponding TearDownContext callback to the primary partner.

On receiving this callback, the primary partner frees its local state associated with the session.

Note that the exact conditions under which a partner decides to terminate a session are outside the scope of the MSDTC Connection Manager: OleTx Transports Protocol; it is the responsibility of the protocol being layered above the MSDTC Connection Manager: OleTx Transports Protocol to provide mechanisms for determining the lifetime of a session.

## 1.4 Relationship to Other Protocols

This protocol is dependent on RPC, which is its transport. The RPC protocol provides extensibility elements that are used by this protocol to provide sessions and peer-to-peer message exchange services. The protocol described in [MS-CMP] can be layered on top of this protocol to provide message batching and connection multiplexing services to protocols layered above the multiplexing protocol. For example, other message-based protocols, such as [MS-DTCO], are layered on top of the multiplexing to provide application-specific functionality. The following diagram illustrates the protocol layering.



**Figure 3: Protocol relationships**

Ultimately, the MSDTC Connection Manager suite of protocols is used as the communication mechanism for the Microsoft Distributed Transaction Coordinator, which is used to coordinate atomic transactions.

## 1.5 Prerequisites/Preconditions

The MSDTC Connection Manager: OleTx Transports Protocol is an RPC interface, and therefore has the prerequisites identified in [MS-RPCE] as being common to RPC interfaces.

The security model employed by this protocol is based on the Security provider model specified in [MS-RPCE], section 1.7. As a result, the function of the protocol requires the availability of a Security provider infrastructure that can be used for RPC security.

It is assumed that an MSDTC Connection Manager: OleTx Transports Protocol partner has obtained a name object containing the contact information for another partner that supports the MSDTC Connection Manager: OleTx Transports Protocol before establishing a session. How a partner obtains this name object is not addressed in this specification.

## 1.6 Applicability Statement

This protocol is primarily designed to provide a peer-to-peer system for exchanging messages over reliable connections. Its use of bidirectional RPC connections to RPC dynamic endpoints means that it is applicable only when the participants can directly contact each other. This protocol requires that the partners refer to each other by NetBIOS name; that is, the participants need to use a name service. Also, the use of Mutual Authentication in conjunction with the protocol's reliance on NetBIOS means that the participants are required to be either in the same domain or in domains that have a trust relationship.

## 1.7 Versioning and Capability Negotiation

This document covers versioning issues in the following areas:

- Supported RPC Transports: The MSDTC Connection Manager: OleTx Transports Protocol uses multiple RPC protocol sequences, as specified in section 2.1.1.
- Protocol Versions: The MSDTC Connection Manager: OleTx Transports Protocol RPC interface has a single version number of 1.0; however, there are two instances of this interface:
  - A base interface.
  - An extended interface obtained by appending methods at the end of the base interface described in section 3.1.

Corresponding to the two interface instances, this protocol defines two versions, which for the purposes of this specification are referred as "MS-CMPO 1.0" (implements the base interface) and "MS-CMPO 1.1" (implements the extended interface).<2>

It is possible to further extend the MSDTC Connection Manager: OleTx Transports Protocol without altering the interface version number by adding RPC methods to the interface with opnums numerically beyond those defined in this specification.

A client determines support for a certain interface instance (or protocol version) from a server by attempting to invoke an instance-specific method. If the method is not supported, the RPC server returns an RPC\_S\_PROCNUM\_OUT\_OF\_RANGE error. For RPC versioning and capacity negotiation in this situation, see [C706], section 4.2.4.2, and [MS-RPCE], section 1.7.

- Security and Authentication Methods: When using authentication, the MSDTC Connection Manager: OleTx Transports Protocol uses the security provider security model as specified in [MS-RPCE], section 2.2.1.1.7. The specific methods of authentication for this protocol are highly implementation-dependent. In order to communicate securely, two protocol partners have to agree on a common security provider package to use. Security provider negotiation packages are specified in [MS-SPNG]. Windows implementations of MSDTC Connection Manager: OleTx Transports Protocol use by default the SPNEGO security provider described in [MS-SPNG], which allows for in-band negotiation of a security provider package.

## 1.8 Vendor-Extensible Fields

This protocol uses HRESULT values as defined in [MS-ERREF]. Vendors can choose their own HRESULT values, provided they set the C bit (0x20000000) for each vendor-defined value, indicating the value is a customer code.

## 1.9 Standards Assignments

Parameter	Value	Reference
RPC interface UUID	906B0CE0-C70B-1067-B317-00DD010662DA	Section 2.1



## 2 Messages

This protocol references commonly used data types as defined in [MS-DTYP].

### 2.1 Transport

#### 2.1.1 Protocol Sequences

The MSDTC Connection Manager: OleTx Transports Protocol uses several different RPC protocol sequences; it SHOULD use the "ncacn\_ip\_tcp" RPC protocol sequence.

Also, the MSDTC Connection Manager: OleTx Transports Protocol MAY use either or both of the "ncacn\_nb\_nb" and "ncacn\_spx" RPC protocol sequences. Very few implementations use these protocols, and so they SHOULD NOT be the only protocols supported by a partner.<3>

#### 2.1.2 Endpoints

The MSDTC Connection Manager: OleTx Transports Protocol MUST use the endpoint mapper to allocate the endpoint that will be used during the exchange of messages. This endpoint MUST be allocated dynamically on a port that MUST be defined by the endpoint mapper, as specified in [C706] part 2, or by the local data element Server TCP Port if the RPC protocol is TCP/IP.<4>

#### 2.1.3 Security

The MSDTC Connection Manager: OleTx Transports Protocol partners SHOULD use a security provider, as specified in [MS-RPCE] section 2.2.1.1.7, and an authentication level as specified in [MS-RPCE] section 2.2.1.1.8.<5>

The MSDTC Connection Manager: OleTx Transports Protocol SHOULD support three security levels: mutual authentication, incoming authentication, and no authentication.

- If the security level is mutual authentication, the MSDTC Connection Manager: OleTx Transports Protocol partner MUST attempt to establish an RPC connection using authenticated RPC calls. If this fails, the RPC connection attempt fails. When using this security level, the MSDTC Connection Manager: OleTx Transports Protocol partner SHOULD accept authenticated RPC calls only if the authentication level is set to RPC\_C\_AUTHN\_LEVEL\_PKT\_PRIVACY.<6>
- If the security level is incoming authentication, the MSDTC Connection Manager: OleTx Transports Protocol partner MUST first attempt to establish an RPC connection using authenticated RPC calls for sessions that were initiated (through the BuildContextW method or the PokeW method) by another protocol partner. If it fails to accept authenticated RPC calls, the MSDTC Connection Manager: OleTx Transports Protocol partner MUST attempt to establish an RPC connection using unauthenticated RPC calls. When using this security level, the MSDTC Connection Manager: OleTx Transports Protocol partner SHOULD accept authenticated RPC calls only if the authentication level is set to RPC\_C\_AUTHN\_LEVEL\_PKT\_PRIVACY.<7>
- If the security level is no authentication, the MSDTC Connection Manager: OleTx Transports Protocol partner SHOULD first attempt to establish an RPC connection using authenticated RPC calls to another protocol partner. If this fails, the MSDTC Connection Manager: OleTx Transports Protocol partner MUST attempt to establish an RPC connection using unauthenticated RPC calls.

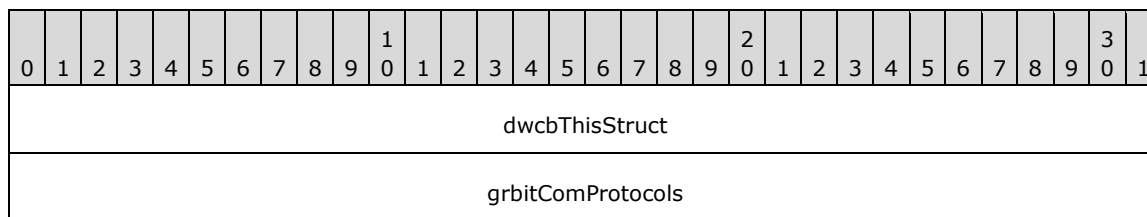
### 2.2 Common Data Types

The MSDTC Connection Manager: OleTx Transports Protocol MUST indicate (to the RPC runtime) that it is only to support the Network Data Representation (NDR) transfer syntax as the RPC transfer syntax,

as specified in [C706] part 4. In addition to RPC base types and definitions specified in [C706] and [MS-DTYP], more data types are defined in the following sections.

### 2.2.1 BIND\_INFO\_BLOB

The BIND\_INFO\_BLOB packet is a structure containing details on how to bind to a partner.



**dwcbThisStruct (4 bytes):** An unsigned 4-byte integer. The size of this structure in bytes. This value MUST be set to 8.

**grbitComProtocols (4 bytes):** A COM\_PROTOCOL bit field specifying the RPC protocol sequences that the partner supports.

### 2.2.2 BIND\_VERSION\_SET

The BIND\_VERSION\_SET structure holds three sets of version range values that specify the version ranges supported by a partner for three protocols: this protocol, MSDTC Connection Manager: OleTx Transports Protocol, and two other protocols that are layered on top of this protocol. This is because MSDTC Connection Manager: OleTx Transports Protocol is designed to be a transport protocol over which two other protocols are layered. For the rest of this specification, the protocol that is layered immediately on top of the MSDTC Connection Manager: OleTx Transports Protocol is referred to as the level-two protocol, and the protocol layered on top of the level-two protocol is the level-three protocol. The ranges of level-two version number values and level-three version number values are specific to the level-two protocol and level-three protocol, respectively.

```
typedef struct _BindVersionSet {
    DWORD dwMinLevelOne;
    DWORD dwMaxLevelOne;
    DWORD dwMinLevelTwo;
    DWORD dwMaxLevelTwo;
    DWORD dwMinLevelThree;
    DWORD dwMaxLevelThree;
} BIND_VERSION_SET;
```

**dwMinLevelOne:** A 4-byte unsigned integer value containing the minimum supported MSDTC Connection Manager: OleTx Transports Protocol version. **dwMinLevelOne** MUST be less than or equal to **dwMaxLevelOne**.

This field indicates whether the unsigned\_char\_t [C706] version of the Session creation API calls (Poke/BuildContext) or the wchar\_t [C706] version of the Session creation API calls (PokeW/BuildContextW) are used. This field MUST be one of the following values:

Value	Meaning
0x00000001	The unsigned_char_t version of the Session creation API (Poke and BuildContext) is used.
0x00000002	The wchar_t version of the Session creation API (PokeW and BuildContextW) is used.

**dwMaxLevelOne:** A 4-byte unsigned integer value containing the maximum version supported for a level-one session. **dwMaxLevelOne** MUST be greater than or equal to **dwMinLevelOne**.

This field indicates whether the `unsigned_char_t` version of the Session creation API calls (Poke/BuildContext) or the `wchar_t` version of the Session creation API calls (PokeW/BuildContextW) are used. This field **MUST** be one of the following values:

Value	Meaning
0x00000001	The <code>unsigned_char_t</code> version of the Session creation API (Poke and BuildContext) is used.
0x00000002	The <code>wchar_t</code> version of the Session creation API (PokeW and BuildContextW) is used.

**dwMinLevelTwo:** A 4-byte unsigned integer value containing the minimum version supported for the level-two protocol session. The value for **dwMinLevelTwo** **MUST** be less than or equal to **dwMaxLevelTwo**.

**dwMaxLevelTwo:** A 4-byte unsigned integer value containing the maximum version supported for the level-two protocol session. The value for **dwMaxLevelTwo** **MUST** be greater than or equal to **dwMinLevelTwo**.

**dwMinLevelThree:** A 4-byte unsigned integer value containing the minimum version supported for the level-three protocol session. The value for **dwMinLevelThree** **MUST** be less than or equal to **dwMaxLevelThree**.

**dwMaxLevelThree:** A 4-byte unsigned integer value containing the maximum version supported for the level-three protocol session. **dwMaxLevelThree** **MUST** be greater than or equal to **dwMinLevelThree**.

### 2.2.3 BOUND\_VERSION\_SET

The `BOUND_VERSION_SET` is a structure containing the MSDTC Connection Manager: OleTx Transports Protocol version numbers that were successfully negotiated during a `BuildContext` call or a `BuildContextW` call.

```
typedef struct _BoundVersionSet {
    DWORD dwLevelOneAccepted;
    DWORD dwLevelTwoAccepted;
    DWORD dwLevelThreeAccepted;
} BOUND_VERSION_SET;
```

**dwLevelOneAccepted:** A session level-one bind was successfully created.

A 4-byte unsigned integer value containing the MSDTC Connection Manager: OleTx Transports Protocol version that was negotiated with the partner and **MUST** be used in MSDTC Connection Manager: OleTx Transports Protocol exchanges with the partner.

Value	Meaning
0x00000001	The <code>unsigned_char_t</code> version of the Session creation API (Poke and BuildContext) is used.
0x00000002	The <code>wchar_t</code> version of the Session creation API (PokeW and BuildContextW) is used.

**dwLevelTwoAccepted:** A 4-byte unsigned integer value containing the level-two protocol version that was negotiated with the partner and **MUST** be used in level-two protocol exchanges with the partner.

**dwLevelThreeAccepted:** A 4-byte unsigned integer value containing the level-three protocol version that was negotiated with the partner and **MUST** be used in level-three protocol exchanges with the partner.

## 2.2.4 COM\_PROTOCOL

The COM\_PROTOCOL is a bit field defining the set of RPC protocol sequences supported by an MSDTC Connection Manager: OleTx Transports Protocol partner.

0	1	2	3	4	5	6	7	8	9	10	11	12	13	14	15	16	17	18	19	20	21	22	23	24	25	26	27	28	29	30	31
bitFieldEncoding																															

**bitFieldEncoding (4 bytes):** The bits of this data type MUST be encoded as follows.

0	1	2	3	4	5	6	7	8	9	10	11	12	13	14	15	16	17	18	19	20	21	22	23	24	25	26	27	28	29	30	31
T	S	B	U	0	L	0	0	0	0	0	0	0	0	0	0	0	0	0	0	0	0	0	0	0	0	0	0	0	0	0	0

Value	Description
T PROT_IP_TCP (0x00000001)	A flag indicating whether the "ncacn_ip_tcp" RPC protocol sequence is supported by the endpoint. If the value is 1, the protocol sequence is supported; otherwise, it is not.
S PROT_SPX (0x00000002)	A flag indicating whether the "ncacn_spx" RPC protocol sequence is supported by the endpoint. If the value is 1, the protocol sequence is supported; otherwise, it is not.
B PROT_NET_BEUI (0x00000004)	A flag indicating whether the "ncacn_nb_nb" RPC protocol sequence is supported by the endpoint. If the value is 1, the protocol sequence is supported; otherwise, it is not.
U PROT_IP_UDP (0x00000008)	A flag indicating whether the "ncacn_ip_udp" RPC protocol sequence is supported by the endpoint. If the value is 1, the protocol sequence is supported; otherwise, it is not.
L PROT_LRPC (0x00000020)	A flag indicating whether the "ncalrpc" RPC protocol sequence is supported by the endpoint. If the value is 1, the protocol sequence is supported; otherwise, the protocol sequence is not supported.

If none of the bits are set, then **bitFieldEncoding** is assumed to be set to PROT\_IP\_TCP by default.

## 2.2.5 HRESULT

This specification uses the HRESULT type. See [MS-ERREF].

## 2.2.6 GUID/UUID

This specification uses the GUID type. See [MS-DTYP]. GUID (globally unique identifier) is also known as a UUID (universally unique identifier) and is a 16-byte structure, intended to serve as a unique identifier for an object. When formatted as a string, it MUST follow the specification described in [C706] Appendix A.

## 2.2.7 RESOURCE\_TYPE

The RESOURCE\_TYPE enumeration provides 4-byte signed integer values that describe the resource to be negotiated.

```
typedef enum _ResourceType
{
    RT_CONNECTIONS = 0x00000000
} RESOURCE_TYPE;
```

**RT\_CONNECTIONS:** Indicates that the resource is a connection.

## 2.2.8 SESSION\_RANK

The SESSION\_RANK enumeration provides 4-byte signed integer values that describe whether the machine is a primary partner or a secondary partner.

```
typedef enum _SessionRank
{
    SRANK_PRIMARY = 0x00000001,
    SRANK_SECONDARY = 0x00000002
} SESSION_RANK;
```

**SRANK\_PRIMARY:** Primary partner.

**SRANK\_SECONDARY:** Secondary partner.

## 2.2.9 TEARDOWN\_TYPE

The TEARDOWN\_TYPE enumeration provides a set of 4-byte signed integer values indicating the reason for starting the teardown phase of session management.

```
typedef enum _TearDownType
{
    TT_FORCE = 0x00000000,
    TT_PROBLEM = 0x00000002,
} TEARDOWN_TYPE;
```

**TT\_FORCE:** Force a teardown.

**TT\_PROBLEM:** Severe session error detected; start a teardown.

## 2.2.10 Constants Used in Method Definitions

The following constants are used in various methods.

Constant/value	Description
GUID_LENGTH 37	The minimum or maximum number of characters in the string form of a contact identifier (CID) that contains a GUID value.
MAX_COMPUTERNAME_LENGTH 15	An operand used to specify the maximum number of characters in the string form of a host name.

### 3 Protocol Details

The RPC interface specified by this protocol is called **IXnRemote** (see section 6 for the Interface Definition Language (IDL) specification). Every **IXnRemote** client is also an **IXnRemote** server, and every **IXnRemote** server is also an **IXnRemote** client. Therefore, the information in section 3.2 applies equally to both **IXnRemote** server and **IXnRemote** client.

#### 3.1 Protocol Versioning

This protocol currently has two versions: MS-CMPO 1.0 and MS-CMPO 1.1. The only differences between the two versions are related to the methods supported by the RPC interface, as shown in the following table.

<b>IXnRemote methods</b>	<b>MS-CMPO 1.0</b>	<b>MS-CMPO 1.1</b>
Poke (Opnum 0)	Supported	Supported
BuildContext (Opnum 1)	Supported	Supported
NegotiateResources (Opnum 2)	Supported	Supported
SendReceive (Opnum 3)	Supported	Supported
TearDownContext (Opnum 4)	Supported	Supported
BeginTearDown (Opnum 5)	Supported	Supported
PokeW (Opnum 6)	Not supported	Supported
BuildContextW (Opnum 7)	Not supported	Supported

#### 3.2 Common Details

##### 3.2.1 Abstract Data Model

This section describes a conceptual model of possible data organization that an implementation maintains to participate in this protocol. The described organization is provided to facilitate the explanation of how the protocol behaves. This document does not mandate that implementations adhere to this model as long as their external behavior is consistent with what is described in this document.

**Note** The abstract interface notation (Public) indicates that the Abstract Data Model element can be directly accessed from outside this protocol.

An MSDTC Connection Manager: OleTx Transports Protocol implementation **MUST** have two partners, as described in section 1.3.1. Within a session, based upon the comparison of their contact identifiers (CIDs): one partner is the primary partner, and the other is the secondary partner. For the sake of clarity, the term "local partner" is used to indicate the role that is being described, and the term "remote partner" is used to indicate the partner with which the local partner is communicating.

The abstract data model described in this section applies to an implementation of the MSDTC Connection Manager: OleTx Transports Protocol as a whole. Therefore, the **IXnRemote** server and **IXnRemote** client roles, which are both implemented by the local partner, share one instance of the model described here.

The MSDTC Connection Manager: OleTx Transports Protocol uses the registry to retrieve the values for the Server TCP Port and Service Network Protocols data elements described in this section, and the persistent store is shared with the MSDTC Connection Manager: OleTx Transaction Protocol [MS-DTCO] and the MSDTC Connection Manager: OleTx Management Protocol [MS-CMOM].

### 3.2.1.1 Partner State

An MSDTC Connection Manager: OleTx Transports Protocol partner MUST allocate and maintain the following local data elements:

**Local Name Object (Public):** A name object that contains the contact information for the local partner.

**Minimum Level 1 Version Number:** A 4-byte unsigned integer, whose value represents the minimum version supported by a MSDTC Connection Manager: OleTx Transports Protocol implementation.

**Maximum Level 1 Version Number:** A 4-byte unsigned integer, whose value represents the maximum version supported by a MSDTC Connection Manager: OleTx Transports Protocol implementation.

**Minimum Level 2 Version Number (Public):** A 4-byte unsigned integer, whose value represents the minimum version supported by the level-two protocol layered on top of the MSDTC Connection Manager: OleTx Transports Protocol implementation.

**Maximum Level 2 Version Number (Public):** A 4-byte unsigned integer, whose value represents the maximum version supported by the **level-two protocol** layered on top of the MSDTC Connection Manager: OleTx Transports Protocol implementation.

**Minimum Level 3 Version Number (Public):** A 4-byte unsigned integer, whose value represents the minimum version supported by the level-three protocol layered on top of the level-two protocol.

**Maximum Level 3 Version Number (Public):** A 4-byte unsigned integer, whose value represents the maximum version supported by the **level-three protocol** layered on top of the **level-two protocol**.

**Security Level (Public):** An implementation-specific enumeration value that specifies the security behavior of a protocol partner. The generic values of this enumeration are given in the following table.

Security Level value	Meaning
Mutual authentication	This value specifies that the protocol partner MUST use an authenticated RPC call to establish a communication between the client and server. The server RPC security MUST be configured as specified by the Server Security Settings, and the client security MUST be configured as specified by the Client Security Settings.
Incoming authentication	This value specifies that the protocol partner MUST use an authenticated RPC call when it is initiated (through BuildContextW or PokeW) by another protocol partner. For sessions initiated by itself, a partner MUST first attempt to use an authenticated RPC call; if that is not supported, the partner MUST use an unauthenticated RPC call.
No Authentication	This value specifies that the protocol partner SHOULD use authenticated RPC calls to establish a communication between the client and server. The server RPC security MUST be configured as specified by the Server Security Settings, and the client security MUST be configured as specified by the Client Security Settings. If this fails, both the client and server sides of the protocol partner MUST use an unauthenticated RPC call. The settings specified by the Server Security Settings and Client Security

Security Level value	Meaning
	Settings objects MUST be ignored.

These data elements are set during the initialization of the partner and are not changed thereafter. See section 3.3.3.

**Note** It is possible to implement the abstract data model by using a variety of techniques. The protocol does not prescribe or advocate any specific implementation technique.

### 3.2.1.2 Session State

An MSDTC Connection Manager: OleTx Transports Protocol partner MUST maintain a session table (a table of session objects) keyed by the contact identifier (CID) field of the Name field referenced by each session object. Each partner maintains a table of the sessions in progress. This table grows and shrinks as sessions are established and terminated. A session object MUST maintain the following data elements:

**Name:** A name object that contains contact information for the remote partner.

**Version:** A BOUND\_VERSION\_SET structure representing the session values negotiated between the two participants in the session.

**Binding Handle:** An RPC binding handle to the remote partner.

**Context Handle:** The RPC context handle associated with this session for the remote partner.

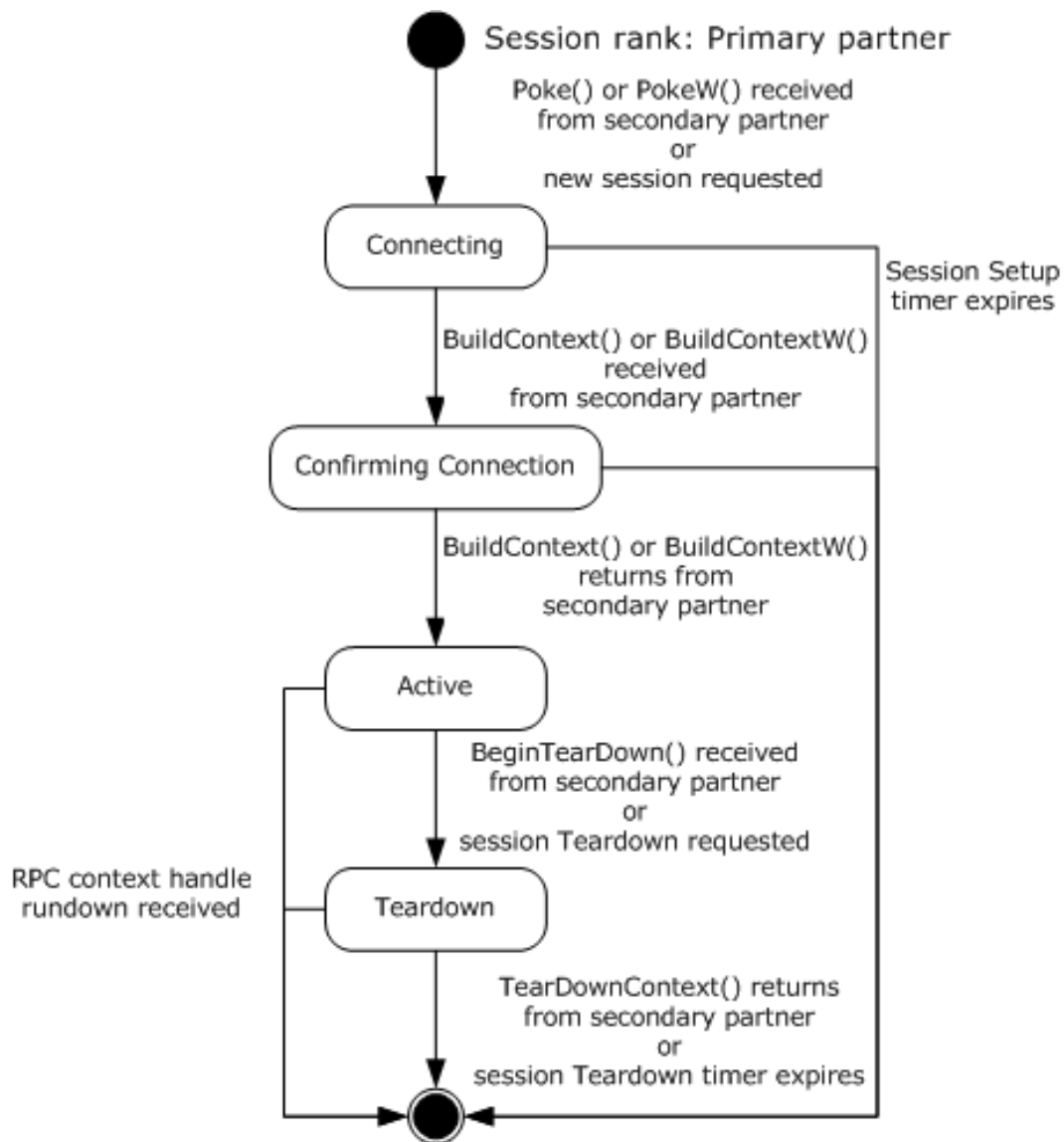
**Timers:** Each session has two timers: a Session Setup timer and a Session Teardown timer.

**State:** The current state of the session. The state of the session MUST be one of the following values:

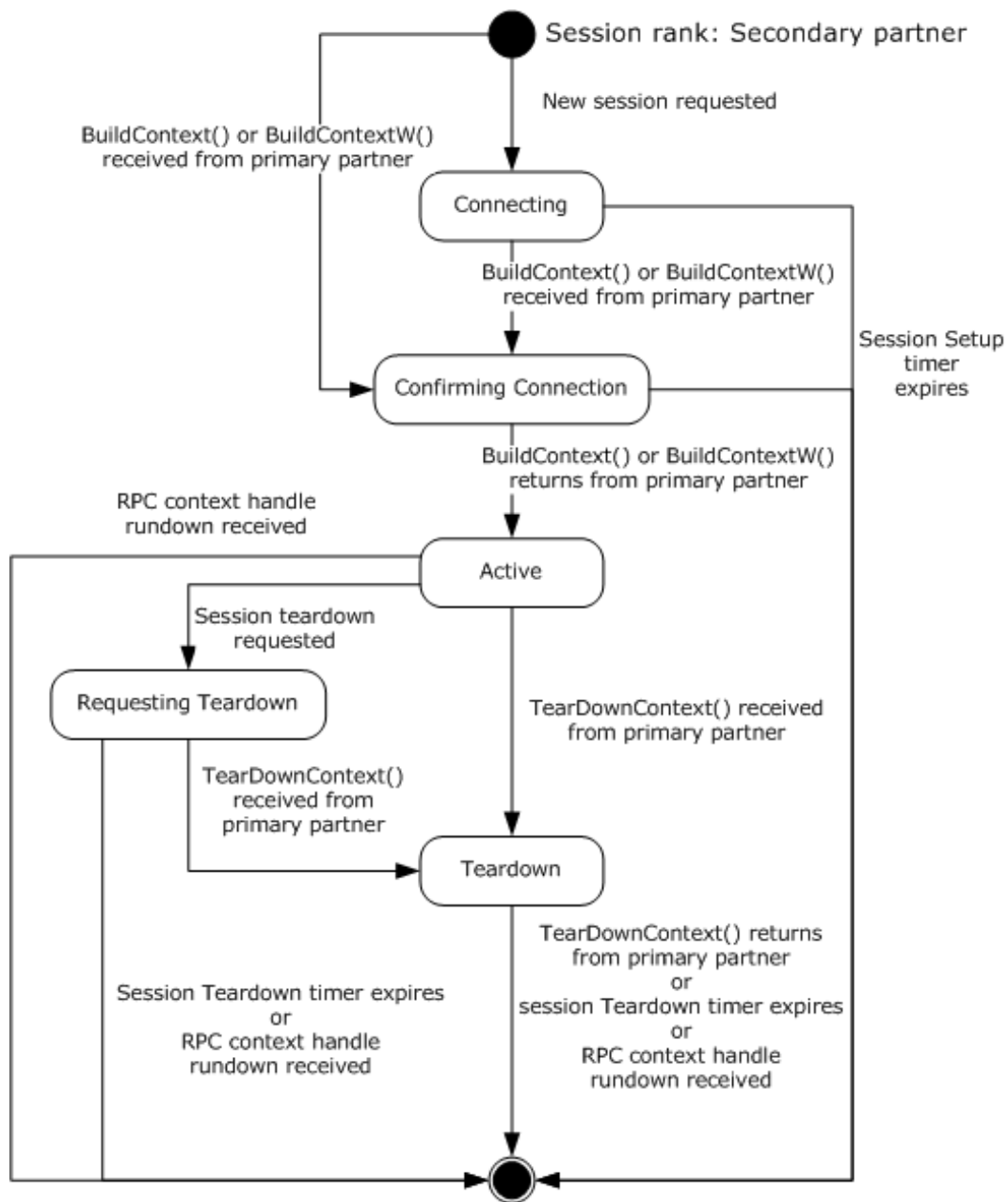
- Connecting
- Confirming Connection
- Active
- Requesting Teardown
- Teardown

The valid state transitions are described by one of the two following state diagrams, depending on whether the local partner is the primary partner in the session or not. Only a secondary partner has the option to enter the Requesting Teardown state.





**Figure 4: Primary session state**



**Figure 5: Secondary session state**

**Note** It is possible to implement the conceptual data defined in this section using a variety of techniques. An implementation is at liberty to implement such data in any way it pleases.

### 3.2.1.3 Cleaning Up a Session Object

When a session object is removed from the session table, it MUST be cleaned up as follows:

- Any outstanding RPC associated with the session object MUST be canceled; this includes calls to BuildContext, BuildContextW, Poke, PokeW, BeginTearDown, and TearDownContext that are being used to establish or tear down the session represented by the session object.

- All active timers associated with the session object MUST be canceled.
- The RPC binding handle stored in the session object MUST be released if it has been allocated. For RPC binding handles, see [C706].
- The RPC context handle stored in the session object MUST be released if it has been allocated. For RPC context handles, see [C706].

#### 3.2.1.4 (Updated Section) Name Object

A name object contains the contact information of a partner. This information is composed of the following data elements that MUST be present on a Name object implementation:

**Hostname:** The NetBIOS name of the machine on which the partner is listening. For NetBIOS, see [NETBEUI], [NBF2CIFS], [RFC1001], and [RFC1002].

**CID:** The contact identifier (CID) of the partner.

**Protocols:** A COM\_PROTOCOL structure representing a set of the RPC network protocols supported by the partner.

**Note** It is possible to implement the conceptual data defined in this section using a variety of techniques. An implementation is at liberty to implement such data in any way it pleases.

##### 3.2.1.4.1 (Updated Section) Name Object Comparison

Two name objects are considered equal if (and only if) their contact identifier (CID) are identical GUIDs, and the Hostname fields are identical NetBIOS host names. For NetBIOS, see [NETBEUI], [NBF2CIFS] and [RFC1001].

### 3.2.2 Timers

An implementation of the MSDTC Connection Manager: OleTx Transports Protocol MUST provide Session Setup timers and Session Teardown timers. Each session object is associated with a pair of these timers.

#### 3.2.2.1 Session Setup Timer

There is an instance of this timer corresponding to each session object. This timer MUST be set when the associated session enters the Connecting state or the Confirming Connection state, and is canceled when the session enters the Active state.

The default value of the timer is specific to the implementation.<8>

#### 3.2.2.2 Session Teardown Timer

There is an instance of this timer corresponding to each session object. This timer MUST be set when the associated session enters the Teardown state, and is canceled when the session leaves that state.

The default value of the timer is specific to the implementation. The local partner SHOULD set the default value of this timer to 10 seconds.

### 3.2.3 Initialization

Each MSDTC Connection Manager: OleTx Transports Protocol partner is explicitly initialized with the data elements identified in section 3.2.1.1, and described in sections Initialization By a Higher-Level Protocol (section 3.2.3.1) and Initialization By the Protocol (section 3.2.3.2).

### 3.2.3.1 Initialization By a Higher-Level Protocol

A MSDTC Connection Manager: OleTx Transports Protocol partner is explicitly initialized with the following data elements identified in section 3.2.1.1.

- A Local Name object supplied by a higher-level protocol.
- The Minimum and Maximum Level 2 Version Numbers are public elements set by a higher-level protocol that is initializing this partner.
- The Minimum and Maximum Level 3 Version Numbers are public elements set by a higher-level protocol that is initializing this partner.
- A Security Level is a public element set by a higher-level protocol that is initializing this partner.

As those elements are supplied to the MSDTC Connection Manager: OleTx Transport Protocol partner, their initialization **MUST** be done by the higher-level protocol.

### 3.2.3.2 Initialization By the Protocol

The MSDTC Connection Manager OleTx Transports Protocol partner **MUST** perform the following actions.

- Set the Minimum and Maximum Level 1 Version Numbers as follows.
  - If the local partner implements the MSDTC Connection Manager OleTx Transports Protocol 1.1 protocol version, the Minimum Level 1 Version Number **MUST** be set to 0x00000001 and the Maximum Level 1 Version Number **MUST** be set to 0x00000002.
  - Otherwise, if the local partner implements only the MSDTC Connection Manager OleTx Transports Protocol 1.0 protocol version, both the Minimum and Maximum Level 1 Version Number **MUST** be set to 0x00000001.
- Create an empty session table and assign it to the Session Table field.

In addition to the initialization steps that are performed by a higher-level protocol and the steps that are common to both the Server and Client roles discussed here, some role-specific initialization also needs to be performed. See section 3.3.3 for initialization steps specific to the IXnRemote Server role and section 3.4.3 for initialization steps specific to the IXnRemote Client role.

If any of the initialization of the above elements fails, an implementation-specific failure result **MUST** be returned to the higher-layer protocol.

### 3.2.4 Message Processing Events and Sequencing Rules

None.

### 3.2.5 Timer Events

Note that the events that follow are described as asynchronous with respect to the normal operation of the MSDTC Connection Manager: OleTx Transports Protocol. If events are implemented this way, it is the responsibility of the implementation to ensure that its state remains consistent.

#### 3.2.5.1 Session Setup Timer

When the Session Setup timer expires, the local partner **SHOULD**:

- Cancel any outstanding call to BuildContext or BuildContextW.

When the Session Setup timer expires, the local partner MUST:

1. Remove the associated session object from the session table, and close any context handle or binding handle stored in the session object. (See [C706].)
2. Return an error result from the current incoming call to BuildContext or BuildContextW from the remote partner identified by the name object stored in the timer's corresponding session object, if any.
3. Return an error result to the level-two protocol that is requesting a new session to the remote partner identified by the name object stored in the timer's corresponding session object, if any.

### 3.2.5.2 Session Teardown Timer

When the Session Teardown timer expires, the local partner SHOULD:

- Cancel any outstanding call to TearDownContext.

When the Session Teardown timer expires, the local partner MUST:

1. Remove the associated session object from the session table, and close any context handle or binding handle stored in the session object. (See [C706].)
2. Return an error result from the current incoming call to TearDownContext from the remote partner identified by the name object associated with the timer's session object, if any. The local partner SHOULD return 0x80004005 (E\_FAIL).
3. Report success to any level-two protocol that is requesting a new session to the partner identified by the name object stored in the timer's session corresponding object, if any.

### 3.2.6 Other Local Events

None.

## 3.3 IXnRemote Server Details

### 3.3.1 Abstract Data Model

In addition to the abstract data model described in section 3.2.1, when implementing an IXnRemote server role an MSDTC Connection Manager: OleTx Transports Protocol partner MUST allocate and maintain the following local data element:

**Server TCP Port:** A 4-byte unsigned integer whose value determines the TCP port number of the RPC server endpoint.<9>

**Service Network Protocols:** An implementation-specific object that identifies which RPC protocol sequences to use, such as ncacn\_ip\_tcp, ncacn\_nb\_nb, ncacn\_ip\_udp, and ncacn\_spx.<10> The ncacn\_ protocols are described in [MS-RPCE] section 2.

**Server Security Settings:** A collection of settings the value of which represents security provider-specific settings used to configure the RPC security of the server. As those settings are internal to this protocol and no network traffic is involved in the setting of their values, the following conditions SHOULD be observed:<11>

- They are stored on an implementation-specific source that SHOULD be secured for write access by system administrators only.

- They SHOULD be established during installation, and the MSDTC Connection Manager: OleTx Transports Protocol does not modify the settings. It only reads them during protocol instance initialization. There are no protocols defined to initialize them.
- Since the storage location is implementation specific, a separate tool could be used to update the storage locations independent of the protocol.

The following settings are the **Server Security Settings** that MUST be specified:

- **RPC Security Provider:** A 4-byte unsigned integer element that identifies the security provider being used. The possible values for this element are defined in [MS-RPCE] section 2.2.1.1.7.

### 3.3.2 Timers

The timers for an IXnRemote server are described in section 3.2.2.

### 3.3.3 Initialization

The MSDTC Connection Manager: OleTx Transports Protocol partner when initiating the IXnRemote Server role, MUST perform the following actions.

- Initialize the Server TCP Port data element by retrieving it directly from the registry, as defined in [MS-CMOM] section 3.3.1.2.1.<12>
- Initialize the Service Network Protocols data element by retrieving it directly from the registry, as defined in [MS-CMOM] section 3.3.1.2.3.
- For each supported RPC protocol on the Service Network Protocols data element:
  - If the supported RPC protocol is TCP/IP and the Server TCP Port data element is supported, then register for an RPC dynamic endpoint using the port number defined on the Server TCP Port.<13>
  - If the supported RPC protocol is TCP/IP and the Server TCP Port local data element is not supported, then register for an RPC dynamic endpoint using the port number automatically assigned by the endpoint mapper.
  - If the supported RPC protocol is not TCP/IP, then register for an RPC dynamic endpoint.
  - If registration of the dynamic endpoint succeeds, then register the interface with the RPC endpoint mapper. During this registration, the local contact identifier (CID) of the interface is specified as the object identifier. See [C706].
  - If registration of the dynamic endpoint does not succeed, then the MSDTC Connection Manager: OleTx Transports Protocol partner MUST NOT be initialized.
- If an "ncalrpc" RPC protocol endpoint was not registered, then register a dynamic endpoint using this protocol. This endpoint SHOULD be registered even when the "ncalrpc" RPC protocol sequence is not included as an entry in the Service Network Protocols data element.
- Initialize the Server Security Settings data element by retrieving the RPC Security Provider data element value from an implementation-specific source.<14>
- Start the RPC server, using the Server Security Settings, to listen for RPC calls.

### 3.3.4 Message Processing Events and Sequencing Rules

The MSDTC Connection Manager: OleTx Transports Protocol SHOULD indicate to the RPC runtime that it is to perform a strict NDR data consistency check at target level 5.0, as specified in [MS-RPCE] section 3.<15>

MSDTC Connection Manager: OleTx Transports Protocol MUST indicate to the RPC runtime via the `strict_context_handle` attribute that it is to reject use of context handles created by a method of a different RPC interface than this one, as specified in [MS-RPCE] section 3.

Methods in RPC Opnum Order

Method	Description
Poke	Opnum: 0
BuildContext	Opnum: 1
NegotiateResources	Opnum: 2
SendReceive	Opnum: 3
TearDownContext	Opnum: 4
BeginTearDown	Opnum: 5
PokeW	Opnum: 6
BuildContextW	Opnum: 7

All methods MUST NOT throw exceptions beyond those thrown by the underlying RPC protocol, as specified in [MS-RPCE].

#### 3.3.4.1 (Updated Section) Poke (Opnum 0)

The Poke method is used by a secondary partner to request the primary partner session initiation. The parameter values specified in the call identify both participants.

```
HRESULT Poke(  
    [in] handle_t hBinding,  
    [in] SESSION_RANK sRank,  
    [in, string, range(GUID_LENGTH, GUID_LENGTH)]  
        unsigned char pszCalleeUuid[],  
    [in, string, range(1, MAX_COMPUTERNAME_LENGTH+1)]  
        unsigned char pszHostName[],  
    [in, string, range(GUID_LENGTH, GUID_LENGTH)]  
        unsigned char pszUuidString[],  
    [in, range(sizeof(BIND_INFO_BLOB), sizeof(BIND_INFO_BLOB))]  
        DWORD dwcbSizeOfBlob,  
    [in, size_is(dwcbSizeOfBlob)] unsigned char rguchBlob[]  
);
```

**hBinding:** The RPC primitive binding handle of the partner receiving the call, as specified in [C706] part Binding Handle.

**sRank:** The session rank of the partner making the call. This parameter MUST be set to 0x02 (SRANK\_SECONDARY).

Value	Meaning
SRANK_SECONDARY 0x02	The caller is the secondary participant.

**pszCalleeUuid:** A string containing the primary partner's contact identifier (CID) in the form of a GUID. The contact identifier (CID) MUST match the CID in the primary partner's local name object and MUST be formatted into a string.

**pszHostName:** The string form of the caller's host name. This host name identifies the machine on which the caller's instance of the MSDTC Connection Manager: OleTx Transports Protocol is running. This value is used by the primary participant to establish the RPC binding handle for its subsequent call to BuildContext. This MUST be a NetBIOS name. For NetBIOS, see [NETBEUI], [NBFS], [RFC1001], and [RFC1002].

**pszUuidString:** The string form of the caller's contact identifier (CID) in the form of a GUID. This contact identifier (CID) identifies the caller's instance of the MSDTC Connection Manager: OleTx Transports Protocol. It MUST match the CID in the caller's local name object, and MUST be formatted into a string. This value is used by the primary participant to establish the RPC binding handle for its subsequent call to BuildContext.

**dwcbSizeOfBlob:** The count, in bytes, of the size of the binding info structure. This parameter MUST be set to 0x00000008.

**rguchBlob:** A byte array containing a BIND\_INFO\_BLOB structure specifying the transport protocols supported. This information is used to build the RPC binding for the reverse connection.

**Return Values:** This method MUST return zero (0x00000000) on success. On failure, it MUST return either one of the values described in the following table or an implementation-specific HRESULT. A client MUST NOT depend on implementation-specific failure HRESULT values. For more information about how the client SHOULD behave based on the possible return values, see section 3.4.6.1.2. Standard errors are defined in [MS-ERREF] section 2.2.

Return value/code	Description
0x00000000 ERROR_STATUS	The return value indicates success.
0x80000123 E_CM_SERVER_NOT_READY	The session object is not in the Connecting state.<16>
0x80070057 E_INVALIDARG	The return value indicates that one of the specified arguments is invalid.<17>
0x000006BB RPC_S_SERVER_TOO_BUSY	The return value indicates that the partner is too busy to complete this operation. For more information, see [MS-RPCE] section 3.1.1.5.5
0x80000173 E_CM_S_PROTOCOL_NOT_SUPPORTED	The return value indicates that none of the protocols described in the <i>rguchBlob</i> parameter is supported by the partner.

The opnum field value for this method is zero.

Poke SHOULD NOT be invoked on a secondary partner. If it is, the secondary partner SHOULD respond by making a Poke callback on the primary partner.<18> In this case, the parameters to the Poke call MUST be calculated from the incoming parameters and the secondary partner's local name object; specifically, the *pszCalleeUuid* parameter MUST be set to the value of the *pszUuidString* parameter; the *pszHostName* parameter MUST be the Hostname field of the secondary partner's local name object; and the *pszUuidString* parameter MUST be the string form of the CID field of the secondary



partner's local name object. The secondary partner MAY return from the Poke method before this call has completed.

When Poke is invoked on a primary partner, the primary partner MUST construct a name object using the host name specified in the *pszHostName* parameter, the contact identifier (CID) specified in the *pszUuidString* parameter, and the RPC protocols specified in the **grbitComProtocols** field of the BIND\_INFO\_BLOB structure.

The primary partner MUST use this name object to check whether or not an existing session with a matching name object already exists in the session table.

If an existing session is found, the primary partner MUST check the State field of the session object.

- If the value is set to Connecting, the existing session will be used during the rest of the call.
- Otherwise, the primary partner MUST return an implementation-specific error code.<19>

If an existing session is not found, a new session object MUST be created and added to the session table. The new session object MUST be initialized with the created name object. An RPC binding handle to the secondary partner MUST be created and stored in the session object. For binding handles, see [C706]. The State field MUST be set to Connecting.

At this point, the primary partner does not have to wait until the entire process is completed. It SHOULD return success from the method, while it continues to perform the following actions.<20>

After identifying a valid existing session or initializing a new session object and adding it to the session table, the primary partner MUST attempt to call either the BuildContextW method or the BuildContext method on the secondary partner with the RPC binding handle stored in the session object. For details on making BuildContext calls to a partner, see section 3.3.4.2 and section 3.4.6.1.1.

To determine whether the secondary partner supports BuildContextW, the primary partner calls BuildContextW on the secondary partner and waits for a return value.

If the secondary partner does not support the BuildContextW method, the primary partner MUST call the BuildContext method.

If the secondary partner does support the BuildContextW method, the primary partner MUST NOT call the BuildContext method. During this call, the secondary partner will make a nested synchronous callback to the primary partner to complete the session establishment. See section 3.4.6.1.1.

If the call completes successfully, the primary partner MUST examine the State field of the session object; if the value is "Confirming Connection", it MUST set the state of the session object to Active and cancel the Session Setup timer associated with that session object.

If the call completes unsuccessfully, the primary partner SHOULD behave according to the error code that was returned:

- If the error code is 0x80000712 (E\_CM\_VERSION\_SET\_NOTSUPPORTED), or 0x80000173 (E\_CM\_S\_PROTOCOL\_NOT\_SUPPORTED), or it retried the nested call for more than the number of times specified in the **Session Setup Retry Count** ADM element, or if the State field of the session object is not "Confirming Connection", the primary partner MUST remove the session object from the session table and clean it up. For instructions on cleaning up a session object, see section 3.2.1.3.
- If the error code is 0x80000123 (E\_CM\_SERVER\_NOT\_READY) or 0x000006BB (RPC\_S\_SERVER\_TOO\_BUSY), or any other implementation-specific error code, the primary partner SHOULD retry the call for the number of times specified in the **Session Setup Retry Count** ADM element.

### 3.3.4.2 (Updated Section) BuildContext (Opnum 1)

The BuildContext method is invoked by either a primary partner or a secondary partner. When invoked by a primary partner, the BuildContext method requests that the secondary partner begin the next step of establishing a session. When invoked by a secondary partner, the BuildContext method requests that the primary partner complete the establishment of the session.

```
HRESULT BuildContext(  
    [in] handle_t hBinding,  
    [in] SESSION_RANK sRank,  
    [in] BIND_VERSION_SET BindVersionSet,  
    [in, string, range(GUID_LENGTH, GUID_LENGTH)]  
        unsigned char pszCalleeUuid[],  
    [in, string, range(1, MAX_COMPUTERNAME_LENGTH+1)]  
        unsigned char pszHostName[],  
    [in, string, range(GUID_LENGTH, GUID_LENGTH)]  
        unsigned char pszUuidString[],  
    [in, string, range(GUID_LENGTH, GUID_LENGTH)]  
        unsigned char pszGuidIn[],  
    [in, out, string, range(GUID_LENGTH, GUID_LENGTH)]  
        unsigned char pszGuidOut[],  
    [in, out] BOUND_VERSION_SET* pBoundVersionSet,  
    [in, range(sizeof(BIND_INFO_BLOB), sizeof(BIND_INFO_BLOB))]  
        DWORD dwcbSizeOfBlob,  
    [in, size_is(dwcbSizeOfBlob)] unsigned char rguchBlob[],  
    [out] PPCONTEXT_HANDLE ppHandle  
);
```

**hBinding:** RPC primitive binding handle for the connection, as specified in [C706] part 3.

**sRank:** The session rank of the partner making the call. It MUST be one of the following values.

Value	Meaning
SRANK_PRIMARY 1	The caller is the primary partner in this session.
SRANK_SECONDARY 2	The caller is the secondary partner in this session.

**BindVersionSet:** A BIND\_VERSION\_SET structure that contains the minimum and maximum versions supported by the partner, as specified by the **Minimum Level 1 Version Number, Maximum Level 1 Version Number, Minimum Level 2 Version Number, Maximum Level 2 Version Number, Minimum Level 3 Version Number, and Maximum Level 3 Version Number** ADM elements (see section 3.2.1.1).

**pszCalleeUuid:** A string containing the callee's contact identifier (CID) in the form of a GUID. The contact identifier (CID) MUST match the contact identifier (CID) in the callee's local name object and MUST be formatted into a string.

**pszHostName:** The string form of the caller's host name. This host name identifies the machine in which the caller's instance of the MSDTC Connection Manager: OleTx Transports Protocol is running. This MUST be a NetBIOS name. For NetBIOS, see [NETBEUI], [NBF2CIFS], [RFC1001], and [RFC1002].

If this is the primary partner call, this value is used by the called secondary partner to establish the RPC binding handle for its corresponding call to BuildContext.

**pszUuidString:** The string form of the caller's contact identifier (CID) in the form of a GUID. This CID identifies the caller's instance of the MSDTC Connection Manager: OleTx Transports Protocol. It

MUST match the contact identifier (CID) in the caller's local name object and MUST be formatted into a string.

If this is the primary participant's call, this value is used by the called secondary participant to establish the RPC binding handle for its corresponding call to BuildContext.

**pszGuidIn:** A string form of a GUID that represents a unique identifier for this bind attempt. The GUID MUST be formatted as a string.

For the primary participant's call to BuildContext, this is a new GUID generated by the primary partner to uniquely identify the session. For the secondary partner's call back to the primary partner, this MUST be the parameter value from the primary partner's call to the secondary partner.

**pszGuidOut:** A string form of a GUID that represents a global identifier for this bind attempt. On input, the *pszGuidOut* parameter MUST be set to 00000000-0000-0000-0000-000000000000. On return, if the bind attempt is ultimately successful, the *pszGuidOut* parameter MUST be equal to the value of the *pszGuidIn* parameter. Otherwise, if the bind attempt is ultimately unsuccessful, the *pszGuidOut* parameter MUST be set to 00000000-0000-0000-0000-000000000000 on return.

**pBoundVersionSet:** A pointer to a BOUND\_VERSION\_SET structure. This structure is filled in by the callee. If any error is returned, this structure MUST be filled with zeros before returning. On successful completion, the caller receives a BOUND\_VERSION\_SET on return.

**dwcbSizeOfBlob:** The count in bytes of the size of the binding info structure. This parameter MUST be set to the size of the BIND\_INFO\_BLOB, 8.

**rguchBlob:** A byte array containing the BIND\_INFO\_BLOB structure specifying the supported transport protocols. This information is used to build the RPC binding for the reverse connection.

**ppHandle:** On successful return, an RPC context handle that correlates with the session object created by (or referenced by) this method. For RPC context handles, see [C706].

**Return Values:** This method MUST return zero (0x00000000) on success. On failure, it MUST return either one of the values described in the following table of return values or an implementation-specific HRESULT. A client MUST NOT depend on implementation-specific failure HRESULT values. For more information about how the client SHOULD behave based on the possible return values, see section 3.4.6.1.1. Standard errors are defined in [MS-ERREF] section 2.2.

Standard errors are defined in [MS-ERREF] section 4.

Return value/code	Description
0x00000000 ERROR_STATUS	The return value indicates success.
0x80000172 E_CM_VERSION_SET_NOTSUPPORTED	The return value indicates that the callee partner does not support the caller's <i>BindVersionSet</i> parameter and will not execute the requested operation.
0x80000124 E_CM_S_TIMEDOUT	The return value indicates that the callee timed out while waiting for the caller to complete the bind. This is returned by a secondary partner to a primary partner if the primary partner does not return from the secondary partner's call to BuildContext within half of the Session Setup Timer (section 3.2.2.1) interval.
0x000006BB RPC_S_SERVER_TOO_BUSY	The return value indicates that the partner is too busy to complete this operation. For more information, see [MS-RPCE] section 3.1.1.5.5.
0x80000173	The return value indicates that none of the protocols described in

Return value/code	Description
E_CM_S_PROTOCOL_NOT_SUPPORTED	the <i>rguchBlob</i> parameter are supported by the partner.
0x80070057 E_INVALIDARG	The return value indicates that one of the specified arguments is invalid.

The following table of return values describes the possible errors that SHOULD be returned by this method.

Return value/code	Description
0x80000120 E_CM_SESSION_DOWN	In a scenario where the value of the <i>sRank</i> parameter is <i>SRANK_SECONDARY</i> , if <i>BuildContext</i> is called and an existing session object is not found, the call SHOULD return this value.<21>
0x80000123 E_CM_SERVER_NOT_READY	The session object is not in the Connecting state.<22>

The *opnum* field value for this method is 1. For more information, see [C706].

This method has different effects depending on the value of the *sRank* parameter.

For the structure and sequence of data on the wire, see [C706] Transfer Syntax Network Data Representation (NDR) topics.

### 3.3.4.2.1 Primary

If the *sRank* parameter is *SRANK\_PRIMARY*, the caller MUST be a primary partner, and the callee MUST be a secondary partner. The session object has already been created on the primary partner, and its state has been set to Connecting.

The secondary partner MUST construct a name object using the host name specified in the *pszHostName* parameter, the contact identifier (CID) specified in the *pszUuidString* parameter, and the RPC protocols specified in the **grbitComProtocols** field of the *BIND\_INFO\_BLOB* structure contained in the *rguchBlob* parameter.

The secondary partner MUST use this name object to check whether an existing session with a matching name object already exists in the session table.

If an existing session object is found (which would occur if the secondary partner initiated the connection through a call to the *Poke* method or the *PokeW* method), the secondary partner MUST check the *State* field of the session object.

- If the value is set to Connecting, the existing session will be used during the rest of the call.
- Otherwise, the secondary partner SHOULD return an implementation-specific error code or indicate that the bind was unsuccessful.<23>

If an existing session object is not found, a new session object MUST be created, MUST be initialized with the name object, and added to the session table. Regardless of whether the session object was found or created, the *State* field of the session object MUST be set to Confirming Connection.

Next, the secondary partner MUST calculate the *pBoundVersionSet* parameter as follows:

- The **dwLevelOneAccepted** member MUST be set to the largest value such that:
  - It is greater than or equal to the larger of the two values:
    - The **dwMinLevelOne** member of the *BindVersionSet* parameter

- The local **Minimum Level 1 Version Number** ADM element
- It is less than or equal to the lesser of the two values:
  - The **dwMaxLevelOne** member of the *BindVersionSet* parameter
  - The local **Maximum Level 1 Version Number** ADM element

If no such value exists, then the function MUST return with the 0x80000172 (E\_CM\_VERSION\_SET\_NOTSUPPORTED) error, and the cleanup steps described in the following list MUST be followed.

- The **dwLevelTwoAccepted** member MUST be set to the largest value such that:
  - It is greater than or equal to the larger of the two values:
    - The **dwMinLevelTwo** member of the *BindVersionSet* parameter
    - The local **Minimum Level 2 Version Number** ADM element
  - It is less than or equal to the lesser of the two values:
    - The **dwMaxLevelTwo** member of the *BindVersionSet* parameter
    - The local **Maximum Level 2 Version Number** ADM element

If no such value exists, then the function MUST return with the 0x80000172 (E\_CM\_VERSION\_SET\_NOTSUPPORTED) error, and the following cleanup steps MUST be followed:

- The **dwLevelThreeAccepted** member MUST be set to the largest value such that:
  - It is greater than or equal to the larger of the two values:
    - The **dwMinLevelThree** member of the *BindVersionSet* parameter
    - The local **Minimum Level 3 Version Number** ADM element
  - It is less than or equal to the lesser of the two values:
    - The **dwMaxLevelThree** member of the *BindVersionSet* parameter
    - The local **Maximum Level 3 Version Number** ADM element

If no such value exists, then the function MUST return with the 0x80000172 (E\_CM\_VERSION\_SET\_NOTSUPPORTED) error, and the following cleanup steps MUST be followed:

The *pBoundVersionSet* parameter calculated previously contains the maximum protocol versions supported by both partners for the MSDTC Connection Manager: OleTx Transports Protocol implementation, and the level-two and level-three protocol implementations layered on top of that implementation (see also 3.2.1.1). These represent the negotiated protocol versions that MUST be used in the respective protocol communications.

If any of the previously described operations fails, the secondary partner MUST remove the session object from the session table and clean it up. See section 3.2.1.3. After cleaning up the session object, the secondary partner MUST return from this method with an error code (E\_CM\_VERSION\_SET\_NOTSUPPORTED or an implementation-specific error).

If the previously described calculations succeed, a copy of the BOUND\_VERSION\_SET structure MUST also be stored in the **Version** ADM element of the session object. Once this is done, the secondary partner MUST start the Session Setup timer associated with that session object if it has not already

been started. The Session Setup timer will not have been started if the session establishment began with the primary partner. In this case, this method call is the first time that the secondary partner has considered this session.

An RPC binding handle to the primary partner MUST be created and stored in the session object. For binding handles, see [C706]. The secondary partner MUST attempt to call either the BuildContextW method or the BuildContext method on the primary partner using the binding handle stored in the session object. For making calls to a partner, see section 3.4.

To determine whether the primary partner supports BuildContextW, the secondary partner calls BuildContextW on the primary partner and waits for a return value. If the call completes with error code RPC\_S\_PROCNUM\_OUT\_OF\_RANGE, then the primary partner does not support BuildContextW.

If the primary partner supports the BuildContextW method:

- If the secondary partner supports the BuildContextW method, then the secondary partner MUST call the BuildContextW method.
- Otherwise, secondary partner SHOULD call the BuildContext method. <24>

The secondary partner MUST NOT return from the current call to BuildContext or BuildContextW until the nested call to BuildContext or BuildContextW has completed.

If the incoming RPC is authenticated, the secondary partner SHOULD use the authenticated identity of the caller as the server principal name for performing mutual authentication, and then use the secondary partner's identity on the nested call. <25>

If the nested call completes successfully, the secondary partner MUST set the state of the session object to Active, store the received context handle in the associated session object, and cancel the Session Setup timer associated with that session object. It MUST set the *contextHandle* parameter to a context handle (see [C706]) that identifies the session object, and then return from the method with the S\_OK code.

If the nested call completes unsuccessfully, the secondary partner SHOULD behave according to the error code that was returned:

- If the error code is 0x80000172 (E\_CM\_VERSION\_SET\_NOTSUPPORTED), or 0x80000173 (E\_CM\_S\_PROTOCOL\_NOT\_SUPPORTED), or 0x80000124 (indicating that the Session Setup timer expired), or it retried the nested call for more than the number of times specified in the **Session Setup Retry Count** ADM element, the secondary partner MUST remove the session object from the session table and clean it up. See section 3.2.1.3. After cleaning up the session object, the secondary partner MUST return the error code to the caller.
- If the error code is 0x80000123 (E\_CM\_SERVER\_NOT\_READY) or 0x000006BB (RPC\_S\_SERVER\_TOO\_BUSY), or any other implementation-specific error code, the secondary partner SHOULD retry the nested call for the number of times specified in the **Session Setup Retry Count** ADM element.

### 3.3.4.2.2 Secondary

If the *sRank* parameter is SRANK\_SECONDARY, the caller MUST be a secondary partner, and the callee MUST be a primary partner. The primary partner MUST construct a name object using the host name specified in the *pszHostName* parameter, the contact identifier (CID) specified in the *pszUuidString* parameter, and the RPC protocols specified in the **grbitComProtocols** field of the BIND\_INFO\_BLOB structure contained in the *rguchBlob* parameter.

The primary partner MUST use this name object to check whether or not an existing session with a matching name object already exists in the session table. If an existing session cannot be found, the primary partner SHOULD return an implementation-specific error code or indicate that the bind was

unsuccessful.<26> Note that for this case, the state of the session object does not influence the behavior of BuildContext.

Next, the primary partner MUST compute the *pBoundVersionSet* parameter, as specified in section 3.3.4.2.1. If the computation fails, the session object MUST be cleaned up, as specified in section 3.3.4.2.1. This value MUST also be stored in the **Version** ADM element of the session object. Finally, the primary partner MUST set the **State** ADM element of the session object to Confirming Connection and then return from the method with the S\_OK code.

### 3.3.4.3 NegotiateResources (Opnum 2)

The NegotiateResources method is invoked by one partner to request that the other partner allocate resources for future use.

```
HRESULT NegotiateResources(
    [in] PCONTEXT_HANDLE phContext,
    [in] RESOURCE_TYPE resourceType,
    [in] DWORD dwcRequested,
    [in, out] DWORD* pdwcAccepted
);
```

**phContext:** An RPC context, returned by a call to BuildContext or BuildContextW, correlated with a session object that is in the Active state. For context handles, see [C706].

**resourceType:** A RESOURCE\_TYPE enumerated value indicating the resource type to be negotiated.

Value	Meaning
RT_CONNECTIONS 0x00	The resource to be negotiated is a connection.

**dwcRequested:** An unsigned 32-bit integer that specifies the number of resources to allocate. This value MUST be greater than 0x00 and less than 1,000.

**pdwcAccepted:** A pointer to an unsigned 32-bit integer that receives the number of resources that were allocated on behalf of the caller. This value SHOULD be smaller than the value of dwcRequested if the partner was incapable of allocating all of the requested resources. On input, this value MUST be set to 0x00000000.

**Return Values:** This method MUST return zero (0x00000000) on success. On failure, it MUST return either one of the values described in the following table of return values or an implementation-specific HRESULT. A client MUST NOT depend on implementation-specific failure HRESULT values. For more information about how the client SHOULD behave based on the possible return values, see section 3.4.6.4. Standard errors are defined in [MS-ERREF] section 2.2.

Return value/code	Description
0x00000000 ERROR_STATUS	The return value indicates success.
0x80000127 E_CM_OUTOFRESOURCES	The server was unable to allocate the resources requested and will continue to operate with the current set of resources.

The following table of return values describes the possible errors that SHOULD be returned by this method.

Return value/code	Description
0x80070057 E_INVALIDARG	This value is returned in the following scenarios: <ul style="list-style-type: none"> <li>If the resource type that was passed in the <i>resourceType</i> parameter is not a valid resource.</li> <li>If the value of the <i>dwcRequested</i> parameter is not between 1 and 1000.</li> </ul>
0x80000123 E_CM_SERVER_NOT_READY	The session object is not in the Active state.

The *Opnum* field value for this method is 2. See [C706].

For the structure and sequence of data on the wire, see [C706] Transfer Syntax Network Data Representation (NDR) topics.

On receiving this method call, the receiving partner MUST verify that the *contextHandle* parameter is associated with a session object that is in the Active state. For context handles, see [C706]. If the session object is not in the Active state, the partner MUST return from this method with an error code. Otherwise, if the session object is not in the Active state, the server SHOULD return a 0x80000123 (E\_CM\_SERVER\_NOT\_READY) error code.

The operation of this method is determined by the level-two protocol that is layered on top of the MSDTC Connection Manager: OleTx Transports Protocol; it is this protocol that defines the range of valid values for the *resourceType* parameter. If the *resourceType* parameter does not identify a valid resource, the partner MUST return from this method one of the errors specified on the table above. The server SHOULD return E\_INVALIDARG. See [MS-ERREF] section 2.1 for the error code. If the level-two protocol cannot reserve any resources at all, the partner MUST return 0x80000127 (E\_CM\_OUTOFRESOURCES). Otherwise, if at least one resource is allocated, the partner MUST set the *pdwcAccepted* parameter to the number of resources allocated by this request, and then return S\_OK.

### 3.3.4.4 SendReceive (Opnum 3)

The *SendReceive* method is invoked by one partner to transmit messages to the other partner. Both the primary and the secondary participants have the option to call this method multiple times after a session has been established between them.

```
HRESULT SendReceive(
    [in] PCONTEXT_HANDLE phContext,
    [in, range(1, 4095)] DWORD dwcMessages,
    [in, range(40, 0x14000)] DWORD dwcbSizeOfBoxCar,
    [in, size_is(dwcbSizeOfBoxCar)]
    unsigned char rguchBoxCar[]
);
```

**phContext:** An RPC context handle, returned by a call to *BuildContext* or *BuildContextW*, correlated with a session object in the Active state. For context handles, see [C706].

**dwcMessages:** An unsigned 32-bit integer specifying the number of messages being sent.

**dwcbSizeOfBoxCar:** Size in bytes of the box car specified by *rguchBoxCar*.

**rguchBoxCar:** An array of bytes that contains the messages being sent.

**Return Values:** This method MUST return zero (0x00000000) on success. On failure, it MUST return either one of the values described in the following table of return values or an implementation-specific HRESULT. A client MUST NOT depend on implementation-specific failure HRESULT values.



For more information about how the client SHOULD behave based on the possible return values, see section 3.4.6.4. Standard errors are defined in [MS-ERREF] section 2.2.

Return value/code	Description
0x00000000 ERROR_STATUS	The return value indicates success.

The table below describes the possible errors that SHOULD be returned by this method.

Return value/code	Description
0x80000119 E_CM_TEARING_DOWN	The session object is in the Requesting Teardown or Teardown state.
0x80000123 E_CM_SERVER_NOT_READY	The session object is not in the Active state.

The opnum field value for this method is 3, as specified in [C706].

For the structure and sequence of data on the wire, see [C706] section 14.

On receiving this method call, the receiving partner MUST verify that the contextHandle parameter is associated with a session object that is in the Active state. For context handles, see [C706]. If the session object is in the Requesting Teardown or Teardown state or it is not in the Active state, the partner MUST return from this method with an implementation-specific error code.

Otherwise, the operation of this method is determined by the level-two protocol that is layered on top of the MSDTC Connection Manager: OleTx Transports Protocol; the session object, the count of messages, and the byte array MUST be presented to the level-two protocol. It is this protocol that defines the format of the *rguchBoxCar* buffer and the messages contained therein. Similarly, any correlation between the *dwcMessages* parameter and the contents of the *rguchBoxCar* buffer lies strictly in the domain of the level-two protocol.

### 3.3.4.5 TearDownContext (Opnum 4)

The TearDownContext method is invoked by either a primary partner or a secondary partner. When invoked by a primary partner, the TearDownContext method requests that the secondary partner begin the next step of tearing down a session. When invoked by a secondary partner, the TearDownContext method requests that the primary partner complete the teardown of the session. The Microsoft Interface Definition Language (MIDL) syntax of the method is as follows.

```
HRESULT TearDownContext (  
    [in, out] PCONTEXT_HANDLE contextHandle,  
    [in] SESSION_RANK sRank,  
    [in] TEARDOWN_TYPE tearDownType  
);
```

**contextHandle:** An RPC context handle, returned by a call to BuildContext or BuildContextW, is correlated with a session object that is in the Active state. After TearDownContext is executed, on either success or failure requests, *contextHandle* will be set to null. For context handles, see [C706].

**sRank:** A SESSION\_RANK enumerated value indicating whether the teardown request is being made by a primary partner or secondary partner. The teardown request MUST be sent from a primary partner only.

Value	Meaning
SRANK_PRIMARY 0x01	The caller is the primary partner in this session. The callee MUST be a secondary partner in this session, and the caller MUST be a primary partner in this session.
SRANK_SECONDARY 0x02	The caller is the secondary partner in this session. The callee MUST be a primary partner in this session, and the caller MUST be a secondary partner in this session.

**tearDownType:** The reason for tearing down the session. It MUST be one of the following values.

Value	Meaning
TT_FORCE 0x00	The session is being forcefully torn down.
TT_PROBLEM 0x02	The session is being torn down because an error has occurred.

**Return Values:** This method MUST return zero (0x00000000) on success. On failure, it MUST return an implementation-specific HRESULT. A client MUST NOT depend on implementation-specific failure HRESULT values. From an over-the-wire communication point of view, the client MUST implement only a behavior for the case when the call succeeds and another behavior for the case when the call does not succeed, (see section 3.4.6.2). Standard errors are defined in [MS-ERREF] section 2.2. A client MUST NOT exhibit behavior observable on the wire that is dependent on implementation-specific failure HRESULT values.

Return value/code	Description
0x00000000 ERROR_STATUS	The return value indicates success.
0x80070057 E_INVALIDARG	This value MAY be returned when an invalid <i>sRank</i> value is passed as a parameter.<27>
0x80004005 E_FAIL	This return value indicates that the session failed to tear down within the interval specified by the Session Teardown Timer (section 3.2.2.2).

Thereafter, the method has a different effect depending on the value of the *sRank* parameter and the value of the *teardownType* parameter.

### 3.3.4.5.1 Problem

If the *teardownType* parameter is TT\_PROBLEM, the receiving partner MUST invalidate the context handle, remove the associated session object from the session table, and close the binding handle associated with the session object. (See [C706].) Once this has been done, the level-two protocol MUST be notified that a problem teardown has occurred, and provide the level-two protocol with the session object.

### 3.3.4.5.2 Primary

If the *teardownType* parameter is not TT\_PROBLEM, and the **sRank** parameter is SRANK\_PRIMARY, the caller MUST be a primary partner, and the callee MUST be a secondary partner.

The secondary partner MUST:

- Set the state of the session object associated with the context handle to Teardown.

- Free the context handle associated with the session by setting the *contextHandle* parameter to NULL.
- Return S\_OK from the method.

In addition, it MUST start the Session Teardown timer associated with that session object if it has not already been started, and attempt to call the TearDown method on the primary partner. When the call completes, regardless of whether it was successful or not, or when the Session Teardown timer expires, the secondary partner MUST close the binding handle of the session object, cancel the Session Teardown timer, and remove the session object from the session table. (See [C706].) Once this has been done, the level-two protocol MUST be notified that a forced teardown has occurred, and provide the level-two protocol with the session object.

The secondary partner SHOULD choose to perform these actions asynchronously.

### 3.3.4.5.3 Secondary

If the *teardownType* parameter is not TT\_PROBLEM, and the **sRank** parameter is SRANK\_SECONDARY, the caller MUST be a secondary partner, and the callee MUST be a primary partner.

The primary partner MUST close the binding handle of the session object, cancel any active timers associated with the session object, and remove the session object from the session table. The primary partner MUST then free the context handle associated with that session and return S\_OK from the method. (See [C706].) Once this has been done, the level-two protocol MUST be notified that a forced teardown has occurred, and provide the level-two protocol with the session object.

### 3.3.4.6 BeginTearDown (Opnum 5)

The BeginTearDown method is invoked by a secondary partner to request that a primary partner begin session teardown.

```
HRESULT BeginTearDown(
    [in] PCONTEXT_HANDLE contextHandle,
    [in] TEARDOWN_TYPE teardownType
);
```

**contextHandle:** An RPC context handle that is correlated with a session object that is in the Active state. For context handles, see [C706].

**teardownType:** The reason for tearing down the session. It MUST be set to 0x00 (TT\_FORCE).

Value	Meaning
0x00	TT_FORCE

**Return Values:** This method MUST return zero (0x00000000) on success. On failure, it MUST return an implementation-specific HRESULT. A client MUST NOT depend on implementation-specific failure HRESULT values. From an over-the-wire communication point of view, the client MUST implement only a behavior for the case when the call succeeds and another behavior for the case when the call does not succeed, (see section 3.4.6.2). Standard errors are defined in [MS-ERREF] section 2.2.

Return value/code	Description
0x00000000 ERROR_STATUS	The return value indicates success.

BeginTearDown MUST NOT be invoked on a secondary partner.

If the session object is in the Teardown state, the primary partner MUST immediately return from the method with S\_OK. Otherwise, the primary partner MUST set the state of the session object associated with the context handle to Teardown and return S\_OK from the method. Also, it MUST start the Session Teardown timer associated with that session object and attempt to call the TearDownContext method on the secondary partner. The secondary partner SHOULD choose to perform these actions asynchronously.

### 3.3.4.7 (Updated Section) PokeW (Opnum 6)

The PokeW method is equivalent in all ways to the Poke method except that its string parameters are encoded in UTF-16.

```
HRESULT PokeW(  
    [in] handle_t hBinding,  
    [in] SESSION_RANK sRank,  
    [in, string, range(GUID_LENGTH, GUID_LENGTH)]  
    wchar_t pwszCalleeUuid[],  
    [in, string, range(1, MAX_COMPUTERNAME_LENGTH+1)]  
    wchar_t pwszHostName[],  
    [in, string, range(GUID_LENGTH, GUID_LENGTH)]  
    wchar_t pwszUuidString[],  
    [in, range(sizeof(BIND_INFO_BLOB), sizeof(BIND_INFO_BLOB))]  
    DWORD dwcbSizeOfBlob,  
    [in, size_is(dwcbSizeOfBlob)] unsigned char rguchBlob[]  
);
```

**hBinding:** The RPC primitive binding handle, as specified in [C706] part 3.

**sRank:** The SESSION\_RANK of the partner making the call. This parameter MUST be set to 0x02 (SRANK\_SECONDARY).

Value	Meaning
SRANK_SECONDARY 0x02	The caller is the secondary participant.

**pwszCalleeUuid:** The string form of the primary partner contact identifier (CID). The contact identifier (CID) MUST match the contact identifier (CID) in the primary partner local name object, and MUST be formatted into a string.

**pwszHostName:** The string form of the caller's host name. This host name identifies the machine in which the caller's instance of the MSDTC Connection Manager: OleTx Transports Protocol is running. This MUST be a NetBIOS name. For NetBIOS, see [NETBEUI], [NBF2CIFS], [RFC1001], and [RFC1002].

**pwszUuidString:** The string form of the caller's contact identifier (CID). This contact identifier (CID) identifies the caller's instance of the MSDTC Connection Manager: OleTx Transports Protocol; it MUST match the contact identifier (CID) in the caller's local name object and MUST be formatted into a string.

**dwcbSizeOfBlob:** The count, in bytes, of the size of the binding info structure. This parameter MUST be set to the size of the BIND\_INFO\_BLOB, 8.

**rguchBlob:** A byte array that contains a BIND\_INFO\_BLOB structure.

**Return Values:** This method MUST return zero (0x00000000) on success. On failure, it MUST return an implementation-specific HRESULT. A client MUST NOT depend on implementation-specific

failure HRESULT values. From an over-the-wire communication point of view, the client MUST implement only a behavior for the case when the call succeeds and another behavior for the case when the call does not succeed, (see section 3.4.6.1.2). Standard errors are defined in [MS-ERREF] section 2.2.

Return value/code	Description
0x00000000 ERROR_STATUS	The return value indicates success.
0x000006D1 RPC_S_PROCNUM_OUT_OF_RANGE	The return value indicates that the caller does not support this call.
0x80000123 E_CM_SERVER_NOT_READY	The session object is not in the Connecting state.<28>
0x80070057 E_INVALIDARG	The return value indicates that one of the specified arguments is invalid.<29>
0x000006BB RPC_S_SERVER_TOO_BUSY	The return value indicates that the partner is too busy to complete this operation. For more information, see [MS-RPCE] section 3.1.1.5.5.
0x80000173 E_CM_S_PROTOCOL_NOT_SUPPORTED	The return value indicates that none of the protocols described in the <i>rguchBlob</i> parameter is supported by the partner.

When a partner calls PokeW on another partner, an error code of RPC\_S\_PROCNUM\_OUT\_OF\_RANGE means that the callee does not support PokeW.

### 3.3.4.8 (Updated Section) BuildContextW (Opnum 7)

The BuildContextW method is equivalent in all ways to the BuildContext method, except that its string parameters are encoded in UTF-16. The MIDL syntax of the method is as follows.

```

HRESULT BuildContextW(
    [in] handle_t hBinding,
    [in] SESSION_RANK sRank,
    [in] BIND_VERSION_SET BindVersionSet,
    [in, string, range(GUID_LENGTH, GUID_LENGTH)]
    wchar_t pwszCalleeUuid[],
    [in, string, range(1, MAX_COMPUTERNAME_LENGTH+1)]
    wchar_t pwszHostName[],
    [in, string, range(GUID_LENGTH, GUID_LENGTH)]
    wchar_t pwszUuidString[],
    [in, string, range(GUID_LENGTH, GUID_LENGTH)]
    wchar_t pwszGuidIn[],
    [in, out, string, range(GUID_LENGTH, GUID_LENGTH)]
    wchar_t pwszGuidOut[],
    [in, out] BOUND_VERSION_SET* pBoundVersionSet,
    [in, range(sizeof(BIND_INFO_BLOB), sizeof(BIND_INFO_BLOB))]
    DWORD dwcbSizeOfBlob,
    [in, size_is(dwcbSizeOfBlob)] unsigned char rguchBlob[],
    [out] PCONTEXT_HANDLE ppHandle
);

```

**hBinding:** RPC primitive binding handle, as specified in [C706] part 3.

**sRank:** The rank of the caller.

Value	Meaning
SRANK_PRIMARY 0x01	The caller is the primary partner in this session.
SRANK_SECONDARY 0x02	The caller is the secondary partner in this session.

**BindVersionSet:** A BIND\_VERSION\_SET structure that contains the minimum and maximum versions supported by the partner.

**pwszCalleeUuid:** The string form of the callee's contact identifier (CID). The contact identifier (CID) MUST match the contact identifier (CID) in the callee's local name object and MUST be formatted into a string.

**pwszHostName:** The string form of the caller's host name. This host name identifies the machine in which the caller's instance of the MSDTC Connection Manager: OleTx Transports Protocol is running. This MUST be a NetBIOS name. For NetBIOS, see [NETBIOS], [NBF2CIFS], [RFC1001], and [RFC1002].

**pwszUuidString:** The string form of the caller's contact identifier (CID). This contact identifier (CID) identifies the caller's instance of the MSDTC Connection Manager: OleTx Transports Protocol. This MUST match the contact identifier (CID) in the caller's local name object and MUST be formatted into a string.

**pwszGuidIn:** A string form of a UUID that represents a unique identifier for this bind attempt. The UUID MUST be formatted into a string.

**pwszGuidOut:** A string form of a UUID that represents a unique identifier for this bind attempt. On input, the *pwszGuidOut* parameter MUST be set to 00000000-0000-0000-0000-000000000000. On return, if the bind attempt is ultimately successful, the *pwszGuidOut* parameter MUST be equal to the value of the *pszGuidIn* parameter. Otherwise, if the bind attempt is ultimately unsuccessful, the *pwszGuidOut* parameter MUST be set to 00000000-0000-0000-0000-000000000000 on return.

**pBoundVersionSet:** A pointer to a BOUND\_VERSION\_SET structure. When the method is called, every field of the BOUND\_VERSION\_SET structure MUST be initialized to zero. This parameter receives a BOUND\_VERSION\_SET on successful completion and also on return.

**dwcbSizeOfBlob:** The count in bytes of the size of the binding info structure. This parameter MUST be set to the size of BIND\_INFO\_BLOB, 8.

**rguchBlob:** A byte array that contains a BIND\_INFO\_BLOB structure.

**ppHandle:** On successful return, an RPC context handle (see [C706]) that correlates with the session object created by, or referenced by, this method.

**Return Values:** This method MUST return zero (0x00000000) on success. On failure, it MUST return either 0x80000172 (E\_CM\_VERSION\_SET\_NOTSUPPORTED) or an implementation-specific HRESULT. A client SHOULD distinguish between 0x80000172 and other error codes, as specified in sections 3.3.4.2.1 and 3.3.4.2.2, but MUST NOT depend on implementation-specific failure HRESULT values. From an over-the-wire communication point of view, the client MUST implement only behaviors for the errors described in the following table.

Standard errors are defined in [MS-ERREF] section 4.

Return value/code	Description
0x00000000	The return value indicates success.

Return value/code	Description
ERROR_STATUS	
0x80000172 E_CM_VERSION_SET_NOTSUPPORTED	The return value indicates that the callee partner does not support the caller's <i>BindVersionSet</i> parameter and will not execute the requested operation.
0x000006D1 RPC_S_PROCNUM_OUT_OF_RANGE	The return value indicates that the caller does not support this call.
0x80000124 E_CM_S_TIMEDOUT	The return value indicates that the callee timed out while waiting for the caller to complete the bind. This value is returned by a secondary partner to a primary partner if the primary partner does not return from the secondary partner's call to <b>BuildContext</b> within half the amount of time specified in the Session Setup Timer (section 3.2.2.1).
0x000006BB RPC_S_SERVER_TOO_BUSY	The return value indicates that the partner is too busy to complete this operation. For more information, see [MS-RPCE] section 3.1.1.5.5.
0x80000173 E_CM_S_PROTOCOL_NOT_SUPPORTED	The return value indicates that none of the protocols described in the <i>rguchBlob</i> parameter is supported by the partner.
0x80070057 E_INVALIDARG	The return value indicates that one of the specified arguments is invalid.

The following table describes the possible implementation-specific errors that SHOULD be returned by this method.

Return value/code	Description
0x80000120 E_CM_SESSION_DOWN	In a scenario where the value of the <i>sRank</i> parameter is <i>SRANK_SECONDARY</i> , if <i>BuildContextW</i> is called and an existing session object is not found, the call SHOULD return this value.<30>
0x80000123 E_CM_SERVER_NOT_READY	The session object is not in the Connecting state.<31>

When a partner calls *BuildContextW* on another partner, an error code of *RPC\_S\_PROCNUM\_OUT\_OF\_RANGE* means that the callee does not support *BuildContextW*.

### 3.3.5 Timer Events

The handling of timer events for the *IXnRemote* server role is described in section 3.2.5.

### 3.3.6 Other Local Events

#### 3.3.6.1 Context Handle Rundown

When the RPC runtime indicates that a context handle associated with a session is being run down, the participant MUST remove the associated session object from the session table, and close any context handle or binding handle stored in the session object. (See [C706].) Once this has been done, the MSDTC Connection Manager: *OleTx Transports Protocol* MUST notify the level-two protocol that a teardown has occurred by signaling a *Session Down* event as described in [MS-CMP] section 3.1.7.2.

**Note** Context handle rundown SHOULD be asynchronous with respect to the normal operation of the protocol. It is the responsibility of the implementation to ensure that session's state remains consistent.

## 3.4 IXnRemote Client Details

### 3.4.1 Abstract Data Model

In addition to the abstract data model described in section 3.2.1, when implementing an IXnRemote client role, an MSDTC Connection Manager: OleTx Transports Protocol partner MUST implement the following local data elements:

- **Session Setup Retry Count:** a 4-byte unsigned element that identifies the number of times that the client SHOULD try to establish a session to another partner before giving up. <32>
- **Client Security Settings:** A collection of settings that are used to configure the RPC security of the client. As those settings are internal to this protocol and no network traffic is involved in the setting of their values, the following conditions SHOULD be observed: <33>
  - They are stored on an implementation-specific source that SHOULD be secured for write access by system administrators only.
  - They SHOULD be established during installation, and the MSDTC Connection Manager: OleTx Transports Protocol does not modify the settings. It only reads them during protocol instance initialization. There are no protocols defined to initialize them.
  - Since the storage location is implementation-specific, a separate tool could be used to update the storage locations independent of the protocol.

The following **Client Security Settings** MUST be specified:

- **RPC Security Provider:** A 4-byte unsigned integer element that identifies the security provider being used. The possible values for this element are defined in [MS-RPCE] section 2.2.1.1.7. The client and server RPC Security Provider SHOULD always have the same value. This value SHOULD be used only in the case of authenticated RPC calls. In the case of unauthenticated RPC calls, the partner SHOULD ignore the value of this element and use the value RPC\_C\_AUTHN\_NONE.
- **RPC Authentication Level:** A 4-byte unsigned integer element that specifies the authentication level being used. Through the authentication level, it is possible to specify if encryption will be used during the exchange of RPC messages between the client and the server. The possible values for these settings are defined in [MS-RPCE] section 2.2.1.1.8. <34> This value SHOULD be used only in the case of authenticated RPC calls. In the case of unauthenticated RPC calls, the partner SHOULD ignore the value of this element and use the value RPC\_C\_AUTHN\_LEVEL\_NONE.

### 3.4.2 Timers

In addition to the timers described in section 3.2.2, an IXnremote client also implements the RPC Call Timer (section 3.4.2.1).

#### 3.4.2.1 RPC Call Timer

Each RPC method call, including **BuildContext**, **BuildContextW**, **Poke**, **PokeW**, **BeginTearDown**, and **TearDownContext**, that is made by a client is associated with an RPC Call Timer. This timer MUST be set before the RPC call is made and is canceled when the RPC call returns.



This timer is used in a request/reply scenario to cancel RPC calls that fail to return within the interval specified by this timer. The default value of the timer is specific to the implementation.<35>

### 3.4.3 Initialization

The MSDTC Connection Manager: OleTx Transports Protocol partner, when initiating the IXnRemote Client role, MUST perform the following actions.

- Initialize the Client Security Settings data element by:
  - Retrieving the RPC Security Provider from an implementation-specific source.<36>
  - Retrieving the RPC Authentication Level from an implementation-specific source.<37>

### 3.4.4 Message Processing Events and Sequencing Rules

This protocol SHOULD indicate to the RPC runtime that it is to perform a strict NDR data consistency check at target level 5.0, as specified in [MS-RPCE] section 3.<38>

### 3.4.5 Timer Events

In addition to handling timer events described in section 3.2.5, the IXnRemote client role also handles events associated with the RPC Call Timer (section 3.4.5.1).

#### 3.4.5.1 RPC Call Timer

When the RPC Call Timer expires, the local partner SHOULD cancel the RPC call associated with the timer. For more information about canceling RPC calls, see [C706] section 6.1.8.

### 3.4.6 Other Local Events

#### 3.4.6.1 New Session Requested

When the level-two protocol requests a new session, it provides the name object of the remote partner being requested to the local partner.

The local partner uses this name object to create an RPC binding handle (see [C706]) to the remote partner's RPC endpoint. The RPC binding handle is instantiated as specified in section 1.3.2.

After creating the RPC binding handle, the local partner then determines the session rank for the new session.

##### 3.4.6.1.1 Primary

When the local partner is the primary partner, it MUST use the provided name object to check whether or not an existing session with a matching name object already exists in the session table.

- If an existing session is found, the session object is returned to the level-two protocol and the request completes successfully.
- Otherwise, a new session object MUST be created and added to the session table.

After creating a new session object, the primary partner MUST set the state of the session object to Connecting, and start the Session Setup timer associated with that session object. An RPC binding handle to the secondary partner MUST be created and stored in the session object (for binding handles, see [C706]). The primary partner MUST attempt to call either the BuildContextW or BuildContext method on the secondary partner using the binding handle stored in the session object.

(For making calls to a partner, see section 3.4.) The binding handle used to make the call MUST be stored in the session object. (For binding handles, see [C706].)

To determine whether the secondary partner supports `BuildContextW`, the primary partner calls `BuildContextW` on the secondary partner and waits for a return value. If the call completes with error code `RPC_S_PROCNUM_OUT_OF_RANGE`, then the secondary partner does not support `BuildContextW`.

If the secondary partner does not support the `BuildContextW` method, the primary partner MUST call the `BuildContext` method. If the secondary partner does support the `BuildContextW` method, the primary partner MUST NOT call the `BuildContext` method. During this call, the secondary partner will make a nested, synchronous callback to the primary partner to complete the session establishment.

If the call to **`BuildContext`** or **`BuildContextW`** completes unsuccessfully, the primary partner SHOULD behave according to the error code that was returned:

- If the error code is `0x80000172` (`E_CM_VERSION_SET_NOTSUPPORTED`) or `0x80000173` (`E_CM_S_PROTOCOL_NOT_SUPPORTED`), or `0x80000124` (`E_CM_S_TIMEDOUT`, indicating that the **Session Setup Timer** expired), or the call was retried for more than the number of times specified in the **Session Setup Retry Count** ADM element, the primary partner MUST report an error to the level-two protocol.
- If the error code is `0x80000123` (`E_CM_SERVER_NOT_READY`) or `0x000006BB` (`RPC_S_SERVER_TOO_BUSY`), or any other implementation-specific error code, the primary partner SHOULD retry the nested call for the number of times specified in the **Session Setup Retry Count** ADM element.

If an error is reported to the level-two protocol, the session object MUST be removed from the session table and cleaned up. For how to clean up a session object, see section 3.2.1.3.

### 3.4.6.1.2 Secondary

When the local partner is the secondary partner, it MUST use the provided name object to check whether or not an existing session with a matching name object already exists in the session table.

- If an existing session is found, the session object is returned to the level-two protocol and the request completes successfully.
- Otherwise, a new session object MUST be created and added to the session table.

After creating a new session object, the secondary partner MUST make a call to either the `Poke` method or the `PokeW` method on the primary partner. (For making calls to a partner, see section 3.4.)

To determine whether the primary partner supports `PokeW`, the secondary partner calls `PokeW` on the primary partner and waits for a return value. If the call completes with error code `RPC_S_PROCNUM_OUT_OF_RANGE`, then the primary partner does not support `PokeW`.

If the primary partner does not support the `PokeW` method, the secondary partner MUST call the `Poke` method.

If the primary partner does support the `PokeW` method, the secondary partner MUST NOT call the `Poke` method.

If the call completes successfully, the secondary partner MUST wait until a session object associated with the provided name object is in the session table and the state of that session object is `Active`.

If the call completes unsuccessfully, the secondary partner SHOULD behave according to the error code that was returned:

- If the error code is 0x80000172 (E\_CM\_VERSION\_SET\_NOTSUPPORTED) or 0x80000173 (E\_CM\_S\_PROTOCOL\_NOT\_SUPPORTED), or it retried the nested call for more than the number of times specified in the **Session Setup Retry Count** ADM element, or if the **State** field of the session object is not "Confirming Connection", the secondary partner **MUST** remove the session object from the session table and clean it up. For instructions on cleaning up a session object, see section 3.2.1.3.
- If the error code is 0x80000123 (E\_CM\_SERVER\_NOT\_READY) or 0x000006BB (RPC\_S\_SERVER\_TOO\_BUSY), or any other implementation-specific error code, the secondary partner **SHOULD** retry the call for the number of times specified in the **Session Setup Retry Count** ADM element.

If an error is reported to the level-two protocol, the session object **MUST** be removed from the session table and cleaned up. For instructions regarding how to clean up a session object, see section 3.2.1.3.

### 3.4.6.2 Forced Session Teardown Requested

When the level-two protocol requests a forced session teardown, it indicates what session object it issues the teardown on. The session object **MUST** be in the Active state.

If the local partner is the primary partner, it **MUST** set the State field of the session object to Teardown, and then issue a TearDownContext call on the secondary partner, specifying the *contextHandle* parameter to be the context handle from the session object, the *teardownType* parameter as 0x00 (TT\_FORCE), and the *sRank* parameter as SRANK\_PRIMARY.

If the local partner is the secondary partner, it **MUST** set the State field of the session object to Requesting Teardown, and then issue a BeginTearDown call on the primary partner. It **MUST** specify the *contextHandle* parameter to be the context handle from the session object, and the *teardownType* parameter as 0x00 (TT\_FORCE).

Any error that occurs while processing this request **MUST** be ignored.

### 3.4.6.3 Problem Session Teardown Requested

When the level-two protocol requests a problem session teardown, it indicates what session object it wants to issue the teardown on.

The local partner **MUST** start the Session Setup timer associated with the session, set the State field of the session object to Teardown, and issue a TearDownContext call on the remote partner, specifying the *contextHandle* parameter to be the context handle from the session object, the *teardownType* parameter as 0x02 (TT\_PROBLEM), and the *sRank* parameter as either 0x01 (SRANK\_PRIMARY) if the local partner is the primary partner, or 0x02 (SRANK\_SECONDARY) if the local partner is the secondary partner.

When the call completes, regardless of whether it was successful or not, or when the Session Teardown timer expires, the local partner **MUST** remove the session object from the session table and clean up the session object. For how to clean up a session object, see section 3.2.1.3.

Any error that occurs while processing this request **MUST** be ignored.

### 3.4.6.4 Resource Allocation Requested

When the level-two protocol requests resource allocation, it indicates what session object it wants to allocate resources from. It also provides the type of resource to be allocated, and the number of resources that it wants to allocate. The local partner **MUST** issue a NegotiateResources call on the remote partner, specifying the *contextHandle* parameter as the context handle from the session object, the *resourceType* parameter as the provided resource type, and the *dwcRequested* parameter

as the number of resources being requested. If the request succeeds, the value of the *pdwcAccepted* parameter MUST be provided back to the level-two protocol.

Any error that occurs while processing this request MUST be reported to the level-two protocol.

### **3.4.6.5 Message Send Requested**

When the level-two protocol requests a message send, it indicates what session object it wants to send the messages on. It also provides an integer count of messages (between 1 and 4,095 inclusive) and the message data contained in a byte array (containing from 32 to 81,920 bytes). The local partner MUST issue a `SendReceive` call on the remote partner, specifying the *contextHandle* parameter as the context handle from the session object, the *dwcMessages* parameter as the count of messages, the *dwcSizeOfBoxCar* parameter as the size of the message data byte array, and the **rguchBoxCar** parameter as the message data byte array.

Any error that occurs while processing this request MUST be reported to the level-two protocol.

## 4 Protocol Examples

To participate in an MSDTC Connection Manager: OleTx Transports Protocol session, a partner exposes an endpoint to its implementation of the IXnRemote interface. Each partner's endpoint is identified by its name object, which includes its NetBIOS machine name, supported RPC network protocols, and contact identifier (CID), as specified in section 3.2.1.4. To begin a session, the first partner needs to have knowledge of the second partner's name object.

From the second partner's contact identifier (CID), the first partner determines if it is the primary partner or secondary partner by performing a case-insensitive string comparison of the first partner's and second partner's contact identifier (CID), as specified in [C706]. If the first partner's contact identifier (CID) string is greater than (follows) the second partner's contact identifier (CID) string, the first partner is the primary partner. If the first partner's contact identifier (CID) string is less than (precedes) the second partner's contact identifier (CID) string, the first partner is the secondary partner.

A session is initiated by the primary partner sending a BuildContext (or BuildContextW) call to the secondary partner with sRank set to SRANK\_PRIMARY. In response, the secondary partner sends a BuildContext call to the secondary partner with sRank set to SRANK\_SECONDARY. When the primary partner accepts the BuildContext call from the secondary partner, the secondary partner returns success to the primary partner's BuildContext call. Because the first BuildContext call in the protocol handshake originates from the primary partner, the secondary partner is required to begin a session with the primary partner by calling Poke (or PokeW), which instructs the primary partner to send a BuildContext call to the secondary partner.

### 4.1 Initiating a Session as Primary Partner

In this example, the first partner is on Machine\_1 with contact identifier (CID) b51996ef-c434-4f79-a288-56efd302fc8e, and the second partner is on Machine\_2 with contact identifier (CID) a3afb37b-f64a-4e6c-9017-f6a96ba6f166. Therefore, the first partner assumes the role of the primary partner, and the second partner assumes the role of the secondary partner.

In this example, both partners support the PokeW and BuildContextW method calls. This example assumes that the primary partner does not have an existing session with the secondary partner, because only one session is allowed between any two partners.

Because this is a new session, the primary partner will create a new object with a newly generated session GUID. The session object is keyed to the session secondary partner name object and is maintained in a list to ensure that there is only one session established with the secondary partner.

To begin a session, the primary partner obtains an RPC binding handle (0x004377b0) from the secondary partner name object, as described in section 1.3.2. The primary partner uses the binding handle to send a BuildContextW call to the secondary partner using SRANK\_PRIMARY. In the BuildContextW call, the primary partner passes its NetBIOS machine name (pwszHostName) and contact identifier (CID) (pwszUuidString), and the secondary partner's contact identifier (CID) (pwszCalleeUuid). The primary partner also sends the session GUID (pwszGuidIn), which will be returned in pwszGuidOut when the session is accepted. In the BindVersionSet, the primary partner indicates that it supports both the Poke / BuildContext and PokeW / BuildContextW method calls, that it supports version 1 of the level-two protocol and version 5 of the level-three protocol. (In this example, this is version 1 of the protocol described in [MS-CMP], and version 5 of this protocol, which is the current version at the level of Windows XP operating system Service Pack 2 (SP2), Windows Server 2003 operating system with Service Pack 1 (SP1), or Windows Vista operating system.) In the BindInfo (rguchBlob), the primary partner indicates that it supports PROT\_IP\_TCP (bit 0) and PROT\_LRPC (bit 5). See section 2.2.4. The primary partner also passes a pointer to a PCONTEXT\_HANDLE, into which it will receive the secondary partner PCONTEXT\_HANDLE when the session is accepted.

Field	Value description
hRPC	RPC_BINDING_HANDLE=0x004377b0
sRank	SRANK_PRIMARY
BindVersionSet	dwMinLevelOne : 1
	dwMaxLevelOne : 2
	dwMinLevelTwo : 1
	dwMaxLevelTwo : 1
	dwMinLevelThree : 1
	dwMaxLevelThree : 5
pwszCalleeUuid	L"a3afb37b-f64a-4e6c-9017-f6a96ba6f166"
pwszHostName	L"Machine_1"
pwszUuidString	L"b51996ef-c434-4f79-a288-56efd302fc8e"
pwszGuidIn	L"a5acacb4-b766-4074-b45d-ade720d1d8e8"
pwszGuidOut [in_out]	L"00000000-0000-0000-0000-000000000000"
pBoundVersionSet [in_out]	dwLevelOneAccepted : 0
	dwLevelTwoAccepted : 0
	dwLevelThreeAccepted : 0
dwcbSizeOfBlob	dwcbSizeOfBlob: 8
rguchBlob	dwcbThisStruct : 8
	PROT_IP_TCP   PROT_LRPC
ppHandle [out]	*PPCONTEXT_HANDLE=0x00000000

When the secondary partner receives the BuildContextW call from the primary partner, the secondary partner attempts to locate an existing session object associated with the primary partner. If an existing session object is found, the secondary partner returns E\_CM\_SERVER\_NOT\_READY (0x80000123), which will occur if a previous session has not been completely torn down before a new session is begun.

If no existing session is found, the secondary partner will create a new session object with session GUID passed to it from the primary partner. The session object is keyed to the primary partner name object and is maintained in a list maintained by the secondary partner to ensure that one session is established with the primary partner.

To complete the session, the secondary partner obtains an RPC binding handle (0x001e7bd0) from the primary partner's name object, as described in section 1.3.2. The secondary partner uses the binding handle to send a BuildContextW message call to the primary partner using SRANK\_SECONDARY. In the BuildContextW call to the primary partner, the secondary partner passes its NetBIOS machine name (pwszHostName) and contact identifier (CID) (pwszUuidString) and the primary partner's contact identifier (CID) (pwszCalleeUuid). The secondary partner also passes in the primary partner's session GUID (pwszGuidIn) from the initial call and a pointer to a PCONTEXT\_HANDLE, which will be filled when the primary partner accepts the session.

Field	Value description
hRPC	RPC_BINDING_HANDLE=0x001e7bd0
sRank	SRANK_SECONDARY
BindVersionSet	dwMinLevelOne : 1
	dwMaxLevelOne : 2
	dwMinLevelTwo : 1
	dwMaxLevelTwo : 1
	dwMinLevelThree : 1
	dwMaxLevelThree : 5
pwszCalleeUuid	L"b51996ef-c434-4f79-a288-56efd302fc8e"
pwszHostName	L"Machine_2"
pwszUuidString	L"a3afb37b-f64a-4e6c-9017-f6a96ba6f166"
pwszGuidIn	L"a5acacb4-b766-4074-b45d-ade720d1d8e8"
pwszGuidOut [in_out]	L"00000000-0000-0000-0000-000000000000"
pBoundVersionSet [in_out]	dwLevelOneAccepted : 0
	dwLevelTwoAccepted : 0
	dwLevelThreeAccepted : 0
dwcbSizeOfBlob [in_out]	dwcbSizeOfBlob: 8
rguchBlob	dwcbThisStruct : 8
	PROT_IP_TCP   PROT_LRPC
ppHandle [out]	*PPCONTEXT_HANDLE=0x00000000

When the BuildContextW call is received by the primary partner, the primary partner fills in the pwszGuidOut with the session GUID from pwszGuidIn, and will fill in the BoundVersionSet with its accepted values. The primary partner will also pass a reference pointer (0x00436e68) to the RPC context handle associated with its session object via the PCONTEXT\_HANDLE, and will reply S\_OK. Once the session is established, all future communication from the secondary partner will reference this PCONTEXT\_HANDLE.

Field	Value description
pwszGuidOut [in_out]	L"a5acacb4-b766-4074-b45d-ade720d1d8e8"
pBoundVersionSet [in_out]	dwLevelOneAccepted : 2
	dwLevelTwoAccepted : 1
	dwLevelThreeAccepted : 5
ppHandle [out]	*PPCONTEXT_HANDLE=0x00436e68

When S\_OK is returned to the secondary partner on its BuildContextW call, the secondary partner fills in the pszGuidOut with the session GUID from pszGuidIn and sets the accepted values for the

BoundVersionSet. The secondary partner will also pass a reference pointer (0x0053b710) to the RPC context handle associated with its session object via the PCONTEXT\_HANDLE and will reply S\_OK. Once the session is established, all future communication from the primary partner will need to reference this PCONTEXT\_HANDLE.

Field	Value description
pwszGuidOut [in_out]	L"a5acacb4-b766-4074-b45d-ade720d1d8e8"
pBoundVersionSet [in_out]	dwLevelOneAccepted : 2
	dwLevelTwoAccepted : 1
	dwLevelThreeAccepted : 5
ppHandle [out]	*PCONTEXT_HANDLE=0x0053b710

At this point, a session has been established between the primary partner and the secondary partner. Either partner is now free to call NegotiateResources and initiate connections.

## 4.2 Initiating a Session as Secondary Partner

In this example, the first partner is on Machine\_1 with contact identifier (CID) (474cf518-d7ae-451f-a31f-caad29fa5e9f), and the second partner is on Machine\_2 with contact identifier (CID) (a3afb37b-f64a-4e6c-9017-f6a96ba6f166). Therefore, the first partner assumes the role of the secondary partner, and the second partner assumes the role of the primary partner. This example assumes that the secondary partner does not have an existing session with the primary partner, as there is only one established session between any two partners.

Because this is a new session, the secondary partner will create a new session object. However, the secondary partner will not generate a session GUID, but will obtain the session GUID from the primary partner BuildContextW call. The session object is keyed to the primary partner's name object and is maintained in a list for the secondary partner to ensure that there is only one session established with the primary partner.

To begin a session, the secondary partner obtains an RPC binding handle (0x00227b88) from the primary partner's name object, as described in section 1.3.2. Because it is against protocol for the secondary partner to send the first BuildContextW call, the secondary partner uses the binding handle to send a PokeW call to the primary partner. In the Poke call, the secondary partner passes its NetBIOS machine name (pszHostName) and contact identifier (CID) (pszUuidString) and the primary partner contact identifier (CID) (pszCalleeUuid). In the BindInfo (rguchBlob), the secondary partner indicates that it supports PROT\_IP\_TCP (bit 0) and PROT\_LRPC (bit 5). See section 2.2.4.

Field	Value description
hRPC	RPC_BINDING_HANDLE=0x00227b88
sRank	SRANK_SECONDARY
pwszCalleeUuid	L"a3afb37b-f64a-4e6c-9017-f6a96ba6f166"
pwszHostName	L"Machine_1"
pwszUuidString	L"474cf518-d7ae-451f-a31f-caad29fa5e9f"
dwcbSizeOfBlob	dwcbSizeOfBlob: 8
rguchBlob	dwcbThisStruct : 8
	PROT_IP_TCP   PROT_LRPC



When the primary partner receives the Poke call from the secondary partner, the primary partner will attempt to locate an existing session object associated with the secondary partner. If an existing session object is found, the primary partner returns E\_CM\_SERVER\_NOT\_READY (0x80000123), which will occur if a previous session has not been completely torn down before a new session is begun.

If no existing session is found, the primary partner will create a new session object and identify it with a newly generated session GUID. The session object is keyed to the secondary partner's name object and is maintained in a list for the primary partner to ensure that there is only one session established with the secondary partner. At this point, the primary partner replies S\_OK to the Poke call from the secondary partner, and assumes the role of the primary partner.

As in the first example (see section 4.1), the primary partner obtains an RPC binding handle (0x004dae28) from the secondary partner's name object (see section 1.3.2) to begin a session. The primary partner uses the binding handle to send a BuildContextW call to the secondary partner using SRANK\_PRIMARY. In the BuildContextW call, the primary partner passes its NetBIOS machine name (pwszHostName) and contact identifier (CID) (pwszUuidString) and the secondary partner's contact identifier (CID) (pwszCalleeUuid). The primary partner also sends the session GUID (pwszGuidIn), which will be returned in pwszGuidOut when the session is accepted. In the BindVersionSet, the primary partner indicates that it supports both the Poke / BuildContext and PokeW / and BuildContextW method calls, that it supports version 1 of the level-two protocol and version 5 of the level-three protocol. In the BindInfo (rguchBlob), the primary partner indicates that it supports PROT\_IP\_TCP (bit 0) and PROT\_LRPC (bit 5). See section 2.2.4. The primary partner also passes a pointer to a PCONTEXT\_HANDLE into which it will receive the secondary partner's PCONTEXT\_HANDLE when the session is accepted.

Field	Value description
hRPC	RPC_BINDING_HANDLE=0x004dae28
sRank	SRANK_PRIMARY
BindVersionSet	dwMinLevelOne : 1
	dwMaxLevelOne : 2
	dwMinLevelTwo : 1
	dwMaxLevelTwo : 1
	dwMinLevelThree : 1
	dwMaxLevelThree : 5
pwszCalleeUuid	L"474cf518-d7ae-451f-a31f-caad29fa5e9f"
pwszHostName	L"Machine_2"
pwszUuidString	L"a3afb37b-f64a-4e6c-9017-f6a96ba6f166"
pwszGuidIn	L"79135638-e1c2-4fb5-9a47-6951d28e4d9c"
pwszGuidOut [in_out]	L"00000000-0000-0000-0000-000000000000"
pBoundVersionSet [in_out]	dwLevelOneAccepted : 0
	dwLevelTwoAccepted : 0
	dwLevelThreeAccepted : 0
dwcbSizeOfBlob	dwcbSizeOfBlob: 8
rguchBlob	dwcbThisStruct : 8

Field	Value description
	PROT_IP_TCP   PROT_LRPC
ppHandle [out]	*PPCONTEXT_HANDLE=0x00000000

When the secondary partner receives the BuildContextW call from the primary partner, the secondary partner will locate the existing session object associated with the primary partner, and will copy in the session GUID passed to it from the primary partner.

Because the primary partner has specified that it supports both the Poke / BuildContext and PokeW / and BuildContextW method calls (dwMaxLevelOne = 2), the secondary partner sends a BuildContextW message call to the primary partner using SRANK\_SECONDARY. In the BuildContextW call to the primary partner, the secondary partner passes its NetBIOS machine name (pwszHostName) and contact identifier (CID) (pwszUuidString), and the primary partner contact identifier (CID) (pwszCalleeUuid). The secondary partner also passes in the primary partner's session GUID (pwszGuidIn) from the initial call. The secondary partner also passes a pointer to a PCONTEXT\_HANDLE, which will be filled when the primary partner accepts the session.

Field	Value description
hRPC	RPC_BINDING_HANDLE=0x00227b88
sRank	SRANK_SECONDARY
BindVersionSet	dwMinLevelOne : 1
	dwMaxLevelOne : 2
	dwMinLevelTwo : 1
	dwMaxLevelTwo : 1
	dwMinLevelThree : 1
	dwMaxLevelThree : 5
pwszCalleeUuid	L"a3afb37b-f64a-4e6c-9017-f6a96ba6f166"
pwszHostName	L"Machine_1"
pwszUuidString	L"474cf518-d7ae-451f-a31f-caad29fa5e9f"
pwszGuidIn	L"79135638-e1c2-4fb5-9a47-6951d28e4d9c"
pwszGuidOut [in_out]	L"00000000-0000-0000-0000-000000000000"
pBoundVersionSet [in_out]	dwLevelOneAccepted : 0
	dwLevelTwoAccepted : 0
	dwLevelThreeAccepted : 0
dwcbSizeOfBlob	dwcbSizeOfBlob: 8
rguchBlob	dwcbThisStruct : 8
	PROT_IP_TCP   PROT_LRPC
ppHandle [out]	*PPCONTEXT_HANDLE=0x00000000

When the BuildContextW call is received by the primary partner, the primary partner fills in the pwszGuidOut with the session GUID from pwszGuidIn, and will fill in the BoundVersionSet with its accepted values. The primary partner will also pass a reference pointer (0x0012af48) to the RPC context handle associated with its session object via the PCONTEXT\_HANDLE, and replies S\_OK. Once the session is established, all future communication from the secondary partner will reference this PCONTEXT\_HANDLE.

Field	Value description
pwszGuidOut [in_out]	L"79135638-e1c2-4fb5-9a47-6951d28e4d9c"
pBoundVersionSet [in_out]	dwLevelOneAccepted : 2
	dwLevelTwoAccepted : 1
	dwLevelThreeAccepted : 5
ppHandle [out]	*PCONTEXT_HANDLE=0x0012af48

When S\_OK is returned to the secondary partner on its BuildContextW call, the secondary partner fills in the pszGuidOut with the session GUID from pszGuidIn and sets the accepted values for the BoundVersionSet. The secondary partner will also pass a reference pointer (0x00bf90e0) to the RPC context handle associated with its session object via the PCONTEXT\_HANDLE and reply S\_OK. Once the session is established, all future communication from the primary partner will need to reference this PCONTEXT\_HANDLE.

Field	Value description
pwszGuidOut [in_out]	L"79135638-e1c2-4fb5-9a47-6951d28e4d9c"
pBoundVersionSet [in_out]	dwLevelOneAccepted : 2
	dwLevelTwoAccepted : 1
	dwLevelThreeAccepted : 5
ppHandle [out]	*PCONTEXT_HANDLE=0x005f90e0

At this point, a session has been established between the primary partner and the secondary partner. Either partner is now free to call NegotiateResources and initiate connections.

### 4.3 Negotiating Connection Resources

After a session is established, each partner needs to respond to requests from MSDTC Connection Manager: OleTx Multiplexing Protocol to negotiate resources with its partner.

In this example, the first partner requests 100 connection resources from the second partner. The first partner will pass in the PCONTEXT\_HANDLE that it received from its BuildContext (or BuildContextW) call to the second partner and the ResourceType for the connection resources (RT\_CONNECTIONS in this example).

Field	Value description
phContext	PCONTEXT_HANDLE=0x0053b710
ResourceType	RT_CONNECTIONS
dwcRequested	100
pdwcAccepted [in_out]	0

When the second partner receives the NegotiateResources call, it will attempt to allocate sufficient resources to support the 100 concurrent connections requested. If successful, the second partner will return S\_OK and indicate that all 100 concurrent connection resources have been allocated.

Field	Value description
pdwcAccepted [in_out]	100

When the first partner receives the S\_OK from the second partner, the first partner is now ready to begin establishing connections with the second partner.

#### 4.4 Terminating a Session

Terminating a session follows a similar protocol handshake as that of establishing a session (see section 4.1).

A session is terminated by the primary partner sending a TearDownContext call to the secondary partner. In response, the secondary partner sends a TearDownContext call to the primary partner. When the primary partner returns success to the TearDownContext call from the secondary partner, the secondary partner returns success to the primary partner's TearDownContext call. Because the first TearDownContext call in the sequence originates from the primary partner, the secondary partner is only allowed to initiate teardown of a session with the primary partner by calling BeginTearDown, which instructs the primary partner to send a TearDownContext call to the secondary partner.

##### 4.4.1 Terminating a Session by a Primary Partner

A primary partner terminates a session by sending a TearDownContext call to the secondary partner, passing a pointer to the PCONTEXT\_HANDLE given to it from the secondary partner, its SESSION\_RANK (that is, SRANK\_PRIMARY), and a reason for tearing down the session; in this example, the TEAR\_DOWN\_TYPE is TT\_FORCE.

Field	Value description
pphContext [in_out]	*PPCONTEXT_HANDLE=0x0053b710
sRank	SRANK_PRIMARY
TearDownType	TT_FORCE

When the secondary partner receives the TearDownContext call, it will send a TearDownContext call to the primary partner, passing a pointer to the PCONTEXT\_HANDLE passed to it from the primary partner, its SESSION\_RANK (that is, SRANK\_SECONDARY), and copy the TEAR\_DOWN\_TYPE from the incoming call (that is, TT\_FORCE).

Field	Value description
pphContext [in_out]	*PPCONTEXT_HANDLE=0x00436e68
sRank	SRANK_SECONDARY
TearDownType	TT_FORCE

When the primary partner receives the TearDownContext request, it will delete its PCONTEXT\_HANDLE and null out pphContext. Any negotiated resources will be released, and it will reply S\_OK.

Field	Value description
pphContext [in_out]	*PPCONTEXT_HANDLE=0x00000000

When the secondary partner receives S\_OK on the TearDownContext call, it will delete its PCONTEXT\_HANDLE and null out pphContext. Any negotiated resources will be released, and it will reply S\_OK.

Field	Value description
pphContext [in_out]	*PPCONTEXT_HANDLE=0x00000000

The session has now been terminated, and no further messages will be sent.

#### 4.4.2 Terminating a Session by a Secondary Partner

In this example, the secondary partner initiates the session termination process by sending a BeginTearDown call to the primary partner, passing the primary partner's PCONTEXT\_HANDLE and the reason for the tear-down request; in this example, the TEAR\_DOWN\_TYPE is TT\_FORCE.

Field	Value description
phContext	PCONTEXT_HANDLE=0x005f90e0
TearDownType	TT_FORCE

When the primary partner receives the BeginTearDown call, it will send a TearDownContext call to the secondary partner, passing a pointer to the secondary partner PCONTEXT\_HANDLE, its SESSION\_RANK (that is, SRANK\_PRIMARY), and a reason for tearing down the session sent to it in the BeginTearDown call (that is, TT\_FORCE).

Field	Value description
pphContext [in_out]	*PPCONTEXT_HANDLE=0x0012af48
sRank	SRANK_PRIMARY
TearDownType	TT_FORCE

When the secondary partner receives the TearDownContext call, it will send a TearDownContext call to the primary partner, passing a pointer to the PCONTEXT\_HANDLE passed to it from the primary partner, its SESSION\_RANK (that is, SRANK\_SECONDARY), and copy the TEAR\_DOWN\_TYPE from the incoming call (that is, TT\_FORCE).

Field	Value description
pphContext [in_out]	*PPCONTEXT_HANDLE=0x005f90e0
sRank	SRANK_SECONDARY
TearDownType	TT_FORCE

When the primary partner receives the TearDownContext request, it will delete its PCONTEXT\_HANDLE and null out pphContext. Any negotiated resources will be released, and it will reply S\_OK.

Field	Value description
pphContext [in_out]	*PPCONTEXT_HANDLE=0x00000000

When the secondary partner receives S\_OK on the TearDownContext call, it will delete its PCONTEXT\_HANDLE and null out pphContext. Any negotiated resources will be released, and it will reply S\_OK.

Field	Value description
pphContext [in_out]	*PPCONTEXT_HANDLE=0x00000000

The session has now been terminated, and no further messages will be sent.

## 5 Security

### 5.1 Security Considerations for Implementers

For security considerations for both authenticated RPC and unauthenticated RPC calls used in this protocol, see section 2.1.3 and [MS-RPCE].

The client can fail over to unauthenticated RPC calls when authenticated RPC calls fail for backward compatibility. The unauthenticated RPC call is not as secure as an authenticated RPC call; the client audits or supports this automatic failover only when it is explicitly specified. For every RPC call, the client executes the following sequence of steps:

- Execute an authenticated RPC call.
  - If the call does not succeed and fallback is allowed:
    - Execute an unauthenticated RPC call.
      - If the call does not succeed, return a failure to the caller.
  - Otherwise, return a failure to the caller.

The server is the only role that can impersonate RPC calls. However, the impersonation level ([MS-RPCE] section 2.2.1.1.9) allowed by the client affects the server's ability to perform impersonation. If the incoming RPC is an authenticated RPC call, the server can use the authenticated identity of the client as the server principal name for performing mutual authentication, and then use the server's identity on the nested call. Preferably, the client would use the `RPC_C_IMPL_LEVEL_IDENTIFY` impersonation level ([MS-RPCE] section 2.2.1.1.9) when making the RPC call. Use of the `RPC_C_IMPL_LEVEL_IMPERSONATE` or `RPC_C_IMPL_LEVEL_DELEGATE` levels can represent a security risk and are to be avoided unless necessary.

### 5.2 Index of Security Parameters

Security parameter	Section
Usage of secured and unsecured RPC connections	2.1.3

## 6 Appendix A: Full IDL

For ease of implementation, the full IDL is provided below.

```
import "ms-dtyp.idl";

[
    uuid (906B0CE0-C70B-1067-B317-00DD010662DA),
    version(1.0),
    pointer_default(unique)
]

interface IXnRemote
{
    #define MAX_COMPUTERNAME_LENGTH 15
    #define GUID_LENGTH 37

    typedef enum _TearDownType
    {
        TT_FORCE = 0x00000000,
        TT_PROBLEM = 0x00000002,
    } TEARDOWN_TYPE;

    typedef enum _SessionRank
    {
        SRANK_PRIMARY = 0x00000001,
        SRANK_SECONDARY = 0x00000002
    } SESSION_RANK;

    typedef enum _ResourceType
    {
        RT_CONNECTIONS = 0x00000000
    } RESOURCE_TYPE;

    typedef struct _BindVersionSet
    {
        DWORD    dwMinLevelOne;
        DWORD    dwMaxLevelOne;
        DWORD    dwMinLevelTwo;
        DWORD    dwMaxLevelTwo;
        DWORD    dwMinLevelThree;
        DWORD    dwMaxLevelThree;
    } BIND_VERSION_SET;

    typedef struct _BoundVersionSet
    {
        DWORD    dwLevelOneAccepted;
        DWORD    dwLevelTwoAccepted;
        DWORD    dwLevelThreeAccepted;
    } BOUND_VERSION_SET;

    typedef unsigned long COM_PROTOCOL;

    typedef struct _BindInfoBlob
    {
        DWORD    dwcbThisStruct;
        COM_PROTOCOL grbitComProtocols;
    } BIND_INFO_BLOB;

    HRESULT Poke (
        [in] handle_t hBinding,
        [in] SESSION_RANK sRank,
        [in, string, range(GUID_LENGTH, GUID_LENGTH)]
            unsigned char pszCalleeUuid[],
        [in, string, range(1, MAX_COMPUTERNAME_LENGTH+1)]
            
```



```

        unsigned char pszHostName[],
[in, string, range(GUID_LENGTH, GUID_LENGTH)]
        unsigned char pszUuidString[],
[in, range(sizeof(BIND_INFO_BLOB), sizeof(BIND_INFO_BLOB))]
        DWORD dwcbSizeOfBlob,
[in, size_is (dwcbSizeOfBlob)] unsigned char rguchBlob[];

HRESULT BuildContext (
[in] handle_t hBinding,
[in] SESSION_RANK sRank,
[in] BIND_VERSION_SET BindVersionSet,
[in, string, range(GUID_LENGTH, GUID_LENGTH)]
    unsigned char pszCalleeUuid[],
[in, string, range(1, MAX_COMPUTERNAME_LENGTH+1)]
    unsigned char pszHostName[],
[in, string, range(GUID_LENGTH, GUID_LENGTH)]
    unsigned char pszUuidString[],
[in, string, range(GUID_LENGTH, GUID_LENGTH)]
    unsigned char pszGuidIn[],
[in, out, string, range(GUID_LENGTH, GUID_LENGTH)]
    unsigned char pszGuidOut[],
[in, out] BOUND_VERSION_SET * pBoundVersionSet,
[in, range(sizeof(BIND_INFO_BLOB), sizeof(BIND_INFO_BLOB))]
    DWORD dwcbSizeOfBlob,
[in, size_is (dwcbSizeOfBlob)] unsigned char rguchBlob[],
[out] PCONTEXT_HANDLE ppHandle);

HRESULT NegotiateResources (
[in] PCONTEXT_HANDLE phContext,
[in] RESOURCE_TYPE resourceType,
[in] DWORD dwcRequested,
[in,out] DWORD * pdwcAccepted);

HRESULT SendReceive (
[in] PCONTEXT_HANDLE phContext,
[in, range(1, 4095)] DWORD dwcMessages,
[in, range(40, 0x14000)] DWORD dwcbSizeOfBoxCar,
[in, size_is (dwcbSizeOfBoxCar)]
    unsigned char rguchBoxCar[]);

HRESULT TearDownContext (
[in, out] PCONTEXT_HANDLE contextHandle,
[in] SESSION_RANK sRank,
[in] TEARDOWN_TYPE tearDownType);

HRESULT BeginTearDown (
[in] PCONTEXT_HANDLE contextHandle,
[in] TEARDOWN_TYPE tearDownType);

HRESULT PokeW (
[in] handle_t hBinding,
[in] SESSION_RANK sRank,
[in, string, range(GUID_LENGTH, GUID_LENGTH)]
    wchar_t pwszCalleeUuid[],
[in, string, range(1, MAX_COMPUTERNAME_LENGTH+1)]
    wchar_t pwszHostName[],
[in, string, range(GUID_LENGTH, GUID_LENGTH)]
    wchar_t pwszUuidString[],
[in, range(sizeof(BIND_INFO_BLOB), sizeof(BIND_INFO_BLOB))]
    DWORD dwcbSizeOfBlob,
[in, size_is (dwcbSizeOfBlob)] unsigned char rguchBlob[];

HRESULT BuildContextW (
[in] handle_t hBinding,
[in] SESSION_RANK sRank,
[in] BIND_VERSION_SET BindVersionSet,
[in, string, range(GUID_LENGTH, GUID_LENGTH)]

```

```
    wchar_t pwszCalleeUuid[],
[in, string, range(1, MAX_COMPUTERNAME_LENGTH+1)]
    wchar_t pwszHostName[],
[in, string, range(GUID_LENGTH, GUID_LENGTH)]
    wchar_t pwszUuidString[],
[in, string, range(GUID_LENGTH, GUID_LENGTH)]
    wchar_t pwszGuidIn[],
[in,out, string, range(GUID_LENGTH, GUID_LENGTH)]
    wchar_t pwszGuidOut[],
[in, out] BOUND_VERSION_SET *pBoundVersionSet,
[in, range(sizeof(BIND_INFO_BLOB), sizeof(BIND_INFO_BLOB))]
    DWORD dwcbSizeOfBlob,
[in, size_is(dwcbSizeOfBlob)] unsigned char rguchBlob[],
[out] PPCONTEXT_HANDLE ppHandle);
}
```

## 7 Appendix B: Product Behavior

The information in this specification is applicable to the following Microsoft products or supplemental software. References to product versions include updates to those products.

- Windows NT 4.0 operating system Option Pack for Windows NT Server
- Windows 2000 operating system
- Windows XP operating system
- Windows Server 2003 operating system
- Windows Vista operating system
- Windows Server 2008 operating system
- Windows 7 operating system
- Windows Server 2008 R2 operating system
- Windows 8 operating system
- Windows Server 2012 operating system
- Windows 8.1 operating system
- Windows Server 2012 R2 operating system
- Windows 10 operating system
- Windows Server 2016 operating system
- Windows Server operating system
- Windows Server 2019 operating system
- Windows Server 2022 operating system
- Windows 11 operating system
- Windows Server 2025 operating system

Exceptions, if any, are noted in this section. If an update version, service pack or Knowledge Base (KB) number appears with a product name, the behavior changed in that update. The new behavior also applies to subsequent updates unless otherwise specified. If a product edition appears with the product version, behavior is different in that product edition.

Unless otherwise specified, any statement of optional behavior in this specification that is prescribed using the terms "SHOULD" or "SHOULD NOT" implies product behavior in accordance with the SHOULD or SHOULD NOT prescription. Unless otherwise specified, the term "MAY" implies that the product does not follow the prescription.

<1> Section 1.3.2: In Windows, except in Windows NT 4.0 Option Pack, Windows 2000, Windows XP, and Windows Server 2003, the "ncacn\_spx" protocol is not supported, its entry will be ignored, and the protocol selection will proceed to the next step.

<2> Section 1.7: Windows NT 4.0 Option Pack uses version 1.0 of the protocol. Otherwise Windows uses version 1.1 of the protocol.

<3> Section 2.1.1: Windows by default supports "ncacn\_ip\_tcp" but can be configured to support either or both of the "ncacn\_spx" and "ncacn\_nb\_nb" protocols. However, "ncacn\_spx" is only supported by Windows NT 4.0 Option Pack, Windows 2000, Windows XP, and Windows Server 2003. The ncacn\_ protocols are described in [MS-RPCE] section 2.

<4> Section 2.1.2: The usage of a specific port, instead of the one automatically selected by the endpoint mapper, is not supported by Windows NT 4.0 Option Pack, Windows 2000, Windows XP, Windows Server 2003, Windows Vista, and Windows Server 2008.

<5> Section 2.1.3: The security level No Authentication is supported by all applicable Windows releases. In applicable Windows releases except in Windows NT 4.0 Option Pack, Windows 2000, Windows XP operating system Service Pack 1 (SP1), and Windows Server 2003 without service packs, Incoming Authentication and Mutual Authentication are supported and the security level is configurable to any of the three values.

<6> Section 2.1.3: In Windows NT 4.0 Option Pack, Windows 2000, Windows XP, Windows Server 2003, and Windows Vista releases, the callee does not check for the authentication level configuration that was set by the caller. Otherwise, applicable Windows releases require that the caller use an authentication level of RPC\_C\_AUTHN\_LEVEL\_PKT\_PRIVACY or the call will be rejected.

<7> Section 2.1.3: In Windows NT 4.0 Option Pack, Windows 2000, Windows XP, Windows Server 2003, and Windows Vista releases the callee does not check for the authentication level configuration that was set by the caller. Otherwise, applicable Windows releases require that the caller use an authentication level of RPC\_C\_AUTHN\_LEVEL\_PKT\_PRIVACY or the call will be rejected.

<8> Section 3.2.2.1: Applicable Windows releases calculate this value using the formula  $CmCancelRpcAfter/2$ , where the value of CmCancelRpcAfter is retrieved from the registry. The following table specifies the registry path and key name for the location of this value, and the default value in milliseconds that Windows uses if the key is not present in the registry.

Registry Path	Key value	Default value
HKEY_LOCAL_MACHINE\Software\Microsoft\MSDTC\	CmCancelRpcAfter	12000

<9> Section 3.3.1: This object is supported only on Windows 7, Windows Server 2008 R2 operating system, Windows 8, Windows Server 2012, Windows 8.1, and Windows Server 2012 R2.

<10> Section 3.3.1: The "ncacn\_spx" protocol is not supported by applicable Windows releases, except by Windows NT 4.0 Option Pack, Windows 2000, Windows XP, and Windows Server 2003.

<11> Section 3.3.1: The usage of Server Security Settings is not supported in Windows NT 4.0 Option Pack.

<12> Section 3.3.3: The Server TCP Port local data element is not supported by Windows NT 4.0 Option Pack, Windows 2000, Windows XP, Windows Server 2003, Windows Vista, and Windows Server 2008.

<13> Section 3.3.3: The Server TCP Port local data element is not supported by Windows NT 4.0 Option Pack, Windows 2000, Windows XP, Windows Server 2003, Windows Vista, and Windows Server 2008.

<14> Section 3.3.3: Windows retrieves this value from the Windows registry. The following table specifies the registry path, the key name, and the default value that Windows uses if the key is not present in the registry.

Registry path	Key value	Default value
HKEY_LOCAL_MACHINE\Software\Microsoft\MSDTC\	RpcAuthnSvc	RPC_C_AUTHN_GSS_NEGOTIATE

<15> Section 3.3.4: Windows NT 4.0 Option Pack and Windows 2000 do not indicate to the RPC runtime that it is to perform such a check.

<16> Section 3.3.4.1: The expected error code 0x80000123 (E\_CM\_SERVER\_NOT\_READY) is returned by Windows, except that Windows NT 4.0 Option Pack, Windows 2000, Windows XP, and Windows Server 2003 return 0x00000000 and set the *pszGuidOut* parameter to 00000000-0000-0000-0000-000000000000 to indicate that the bind was successful.

<17> Section 3.3.4.1: In Windows NT 4.0 Option Pack, Windows 2000, Windows XP, and Windows Server 2003, when a Poke is invoked on a secondary partner, the secondary partner responds by making a BuildContext callback on the primary partner. Otherwise in applicable Windows releases a Poke can be invoked only on a primary partner. If a Poke is invoked on a secondary partner, Windows returns the 0x80070057 (E\_INVALIDARG) error code.

<18> Section 3.3.4.1: On Windows NT 4.0 Option Pack, Windows 2000, Windows XP, and Windows Server 2003, when a Poke is invoked on a secondary partner, the secondary partner responds by making a BuildContext callback on the primary partner. Otherwise in applicable Windows releases a Poke can be invoked only on a primary partner. If a Poke is invoked on a secondary partner, Windows returns the 0x80070057 (E\_INVALIDARG) error code.

<19> Section 3.3.4.1: The expected error code 0x80000123 (E\_CM\_SERVER\_NOT\_READY) is returned by Windows, except that Windows NT 4.0 Option Pack, Windows 2000, Windows XP, and Windows Server 2003 return 0x00000000 and set the *pszGuidOut* parameter to 00000000-0000-0000-0000-000000000000 to indicate that the bind was unsuccessful.

<20> Section 3.3.4.1: In Windows, when a Poke or PokeW call is received by a primary partner, the work of establishing the session with the subsequent BuildContext or BuildContextW call is done on a separate thread. Therefore, the call to Poke or PokeW will most likely return before the call to BuildContext or BuildContextW is made on the secondary partner; however, due to multithreading behavior, the reverse order can occur.

<21> Section 3.3.4.2: The expected error code 0x80000120 (E\_CM\_SESSION\_DOWN) is returned by Windows, except that Windows NT 4.0 Option Pack, Windows 2000, Windows XP, and Windows Server 2003 return 0x00000000 and set the *pszGuidOut* parameter to 00000000-0000-0000-0000-000000000000 to indicate that the bind was unsuccessful.

<22> Section 3.3.4.2: The expected error code 0x80000123 (E\_CM\_SERVER\_NOT\_READY) is returned by Windows, except that Windows NT 4.0 Option Pack, Windows 2000, Windows XP, and Windows Server 2003 return 0x00000000 and set the *pszGuidOut* parameter to 00000000-0000-0000-0000-000000000000 to indicate that the bind was successful.

<23> Section 3.3.4.2.1: The expected error code 0x80000123 (E\_CM\_SERVER\_NOT\_READY) is returned by Windows, except that Windows NT 4.0 Option Pack, Windows 2000, Windows XP, and Windows Server 2003 return 0x00000000 and set the *pszGuidOut* parameter to 00000000-0000-0000-0000-000000000000 to indicate that the bind was unsuccessful.

<24> Section 3.3.4.2.1: The BuildContextW or PokeW method is always tried first in applicable Windows releases, except by Windows NT operating system. If the BuildContextW or PokeW method fails, as indicated by an RPC\_S\_PROCNUM\_OUT\_OF\_RANGE error, Windows falls back to the BuildContext or Poke method. Windows does not inspect the BIND\_VERSION\_SET to determine which methods are supported by the partner.

<25> Section 3.3.4.2.1: Windows NT 4.0 Option Pack, Windows 2000, and Windows XP do not support Mutual Authentication.

<26> Section 3.3.4.2.2: The expected error code 0x80000120 (E\_CM\_SESSION\_DOWN) is returned by Windows, except that Windows NT 4.0 Option Pack, Windows 2000, Windows XP, and Windows Server 2003 return 0x00000000 and set the *pszGuidOut* parameter to 00000000-0000-0000-0000-000000000000 to indicate that the bind was unsuccessful.

<27> Section 3.3.4.5: Windows does not check if the *sRank* value passed as a parameter is valid and returns 0x00000000 (ERROR\_STATUS).

<28> Section 3.3.4.7: The expected error code 0x80000123 (E\_CM\_SERVER\_NOT\_READY) is returned by Windows, except that Windows NT 4.0 Option Pack, Windows 2000, Windows XP, and Windows Server 2003 return 0x00000000 and set the *pszGuidOut* parameter to 00000000-0000-0000-0000-000000000000 to indicate that the bind was successful.

<29> Section 3.3.4.7: In Windows 2000, Windows XP, and Windows Server 2003, when a PokeW is invoked on a secondary partner, the secondary partner responds by making a BuildContextW callback on the primary partner. In applicable Windows releases, except Windows NT 4.0 Option Pack, Windows 2000, Windows XP, Windows Server 2003, and Windows Vista without service packs, a PokeW can be invoked only on a primary partner. If a PokeW is invoked on a secondary partner, Windows returns the 0x80070057 (E\_INVALIDARG) error code.

<30> Section 3.3.4.8: The expected error code 0x80000120 (E\_CM\_SESSION\_DOWN) is returned by Windows, except that Windows NT 4.0 Option Pack, Windows 2000, Windows XP, and Windows Server 2003 return 0x00000000 and set the *pszGuidOut* parameter to 00000000-0000-0000-0000-000000000000 to indicate that the bind was unsuccessful.

<31> Section 3.3.4.8: The expected error code 0x80000123 (E\_CM\_SERVER\_NOT\_READY) is returned by Windows, except that Windows NT 4.0 Option Pack, Windows 2000, Windows XP, and Windows Server 2003 return 0x00000000 and set the *pszGuidOut* parameter to 00000000-0000-0000-0000-000000000000 to indicate that the bind was successful.

<32> Section 3.4.1: Windows calculates this value using the formula  $((CmMaxNumberBindRetries + 1) / 2) * 3$ , where *CmMaxNumberBindRetries* is retrieved from the registry. The following table specifies the registry path, the key name, and the default value that Windows uses if the key is not present in the registry.

Registry path	Key name	Default value
HKEY_LOCAL_MACHINE\Software\Microsoft\MSDTC	CmMaxNumberBindRetries	8

<33> Section 3.4.1: The usage of Client Security Settings is not supported in Windows NT 4.0 Option Pack.

<34> Section 3.4.1: Windows NT 4.0 Option Pack does not support the RPC Authentication Level setting.

<35> Section 3.4.2.1: Windows retrieves this value from the registry. The following table specifies the registry path, the key name, and the default value in milliseconds that Windows uses if the key is not present in the registry.

Registry path	Key name	Default value
HKEY_LOCAL_MACHINE\Software\Microsoft\MSDTC\	CmCancelRpcAfter	12000

<36> Section 3.4.3: Windows retrieves this value from the registry. The following table specifies the registry path, the key name, and the default value that Windows uses if the key is not present in the registry.

Registry path	Key value	Default value
HKEY_LOCAL_MACHINE\Software\Microsoft\MSDTC	RpcAuthnSvc	RPC_C_AUTHN_GSS_NEGOTIATE

<37> Section 3.4.3: Applicable Windows releases always set the value of the Authentication Level to RPC\_C\_AUTHN\_LEVEL\_PKT\_PRIVACY, and do not allow the user to change this value, except in Windows NT 4.0 Option Pack, Windows 2000 operating system Service Pack 1 (SP1), Windows XP, Windows Server 2003, and Windows Vista allows the user to configure this value through the Windows registry. The following table specifies the registry path, the key name, and the default value that Windows uses if the key is not present in the registry.

Registry path	Key value	Default value
HKEY_LOCAL_MACHINE\Software\Microsoft\MSDTC	RpcAuthnLevel	RPC_C_AUTHN_LEVEL_PKT_PRIVACY

<38> Section 3.4.4: The strict NDR data consistency check is indicated to the RPC runtime in Windows, except in Windows NT 4.0 Option Pack and Windows 2000.

<39> Section 5.1: Applicable Windows releases support unauthenticated RPC calls. Applicable Windows releases by default support authenticated RPC calls except on Windows NT 4.0 Option Pack, Windows 2000, and Windows XP SP1. In addition, these systems by default do not allow fallback to unauthenticated RPC calls but can be configured to do so.

<40> Section 5.1: Windows NT 4.0 Option Pack, Windows 2000, and Windows XP do not support Mutual Authentication.

## 8 Change Tracking

This section identifies changes that were made to this document since the last release. Changes are classified as Major, Minor, or None.

The revision class **Major** means that the technical content in the document was significantly revised. Major changes affect protocol interoperability or implementation. Examples of major changes are:

- A document revision that incorporates changes to interoperability requirements.
- A document revision that captures changes to protocol functionality.

The revision class **Minor** means that the meaning of the technical content was clarified. Minor changes do not affect protocol interoperability or implementation. Examples of minor changes are updates to clarify ambiguity at the sentence, paragraph, or table level.

The revision class **None** means that no new technical changes were introduced. Minor editorial and formatting changes may have been made, but the relevant technical content is identical to the last released version.

The changes made to this document are listed in the following table. For more information, please contact [dochelp@microsoft.com](mailto:dochelp@microsoft.com).

Section	Description	Revision class
1.3.1 Identifiers and Partner Roles	11751 : Removed obsolete reference and added NBF2CIFS as reference.	Major
3.2.1.4 Name Object	11751 : Removed obsolete reference and added NBF2CIFS as reference.	Major
3.2.1.4.1 Name Object Comparison	11751 : Removed obsolete reference and added NBF2CIFS as reference.	Major
3.3.4.1 Poke (Opnum 0)	11751 : Removed obsolete reference and added NBF2CIFS as reference.	Major
3.3.4.2 BuildContext (Opnum 1)	11751 : Removed obsolete reference and added NBF2CIFS as reference.	Major
3.3.4.7 PokeW (Opnum 6)	11751 : Removed obsolete reference and added NBF2CIFS as reference.	Major
3.3.4.8 BuildContextW (Opnum 7)	11751 : Removed obsolete reference and added NBF2CIFS as reference.	Major



## 9 Index

### A

- Abstract data model
  - client 48
  - common 22
  - server 29
- Applicability 15

### B

- BeginTearDown (Opnum 5) method 43
- BeginTearDown method 43
- BIND\_INFO\_BLOB packet 18
- BIND\_VERSION\_SET structure 18
- Binding handles 10
- BOUND\_VERSION\_SET structure 19
- BuildContext (Opnum 1) method 34
- BuildContext method 34
- BuildContextW (Opnum 7) method 45
- BuildContextW method 45

### C

- Capability negotiation 15
- Change tracking 72
- Client
  - abstract data model 48
  - initialization 49
  - local events 49
  - message processing 49
  - sequencing rules 49
  - timer events 49
  - timers 49
- COM\_PROTOCOL packet 20
- Common
  - abstract data model 22
  - initialization 27
  - local events 29
  - message processing 28
  - sequencing rules 28
  - timer events 28
  - timers 27
- Common data types 17
- Connection resources example 59
- Context handle rundown 48

### D

- Data model - abstract
  - client 48
  - common 22
  - server 29
- Data types 17
  - common - overview 17

### E

- Endpoints
  - message 17
  - RPC 10
- Events
  - timer - client 49

timer - server 47

#### Examples

- initiating a session as primary partner 53
- initiating a session as secondary partner 56
- negotiating connection resources 59
- negotiating connection resources example 59
- overview 53
- primary partner example 53
- secondary partner example 56
- terminating a session 60
- terminating session by primary partner example 60
- terminating session by secondary partner example 61
- terminating session examples 60

## F

- Fields - vendor-extensible 15
- Forced session teardown request 51
- Full IDL 64

## G

- Glossary 7
- GUID 20
- GUID\_LENGTH 21

## H

- HRESULT 20

## I

- Identifiers 10
- IDL 64
- Implementer - security considerations 63
- Index of security parameters 63
- Informative references 10
- Initialization
  - client 49
  - common 27
  - server 30
- Initiating a session as primary partner example 53
- Initiating a session as secondary partner example 56
- Introduction 7

## L

- Lifecycle - session 11
- Local events
  - client 49
  - common 29
  - server 48

## M

- MAX\_COMPUTERNAME\_LENGTH 21
- Message processing
  - client 49
  - common 28
  - server 31
- Messages
  - common data types 17
  - data types 17
  - endpoints 17

- protocol sequences 17
- security 17
- session 13
- session send request 52
- transport 17

#### Methods

- BeginTearDown (Opnum 5) 43
- BuildContext (Opnum 1) 34
- BuildContextW (Opnum 7) 45
- NegotiateResources (Opnum 2) 39
- Poke (Opnum 0) 31
- PokeW (Opnum 6) 44
- SendReceive (Opnum 3) 40
- TearDownContext (Opnum 4) 41

## N

- Name object 27
- Name object comparison 27
- NegotiateResources (Opnum 2) method 39
- NegotiateResources method 39
- Negotiating connection resources example 59
- Normative references 9

## O

- Overview 10
- Overview (synopsis) 10

## P

- Parameters - security index 63
- Partner roles 10
- partner state 23
- Poke (Opnum 0) method 31
- Poke method 31
- PokeW (Opnum 6) method 44
- PokeW method 44
- Preconditions 14
- Prerequisites 14
- Primary partner example 53
- Primary session request 49
- Problem session teardown request 51
- Product behavior 67
- Protocol Details
  - overview 22
- Protocol sequences - messages 17

## R

- References 9
  - informative 10
  - normative 9
- Relationship to other protocols 14
- Resource allocation request 52
- Resources - session 13
- ResourceType enumeration 21
- RPC endpoint 10

## S

- Secondary partner example 56
- Secondary session request 50
- Security

- implementer considerations 63
- messages 17
- parameter index 63
- SendReceive (Opnum 3) method 40
- SendReceive method 40
- Sequencing rules
  - client 49
  - common 28
  - server 31
- Server
  - abstract data model 29
  - BeginTearDown (Opnum 5) method 43
  - BuildContext (Opnum 1) method 34
  - BuildContextW (Opnum 7) method 45
  - initialization 30
  - local events 48
  - message processing 31
  - NegotiateResources (Opnum 2) method 39
  - Poke (Opnum 0) method 31
  - PokeW (Opnum 6) method 44
  - SendReceive (Opnum 3) method 40
  - sequencing rules 31
  - TearDownContext (Opnum 4) method 41
  - timer events 47
  - timers 30
- Session
  - forced teardown request 51
  - message send request 52
  - object 26
  - primary request 49
  - problem teardown request 51
  - request 49
  - resource allocation request 52
  - secondary request 50
  - setup timer (section 3.2.2.1 27, section 3.2.5.1 28)
  - state 24
  - teardown timer (section 3.2.2.2 27, section 3.2.5.2 29)
- Session object 26
- SessionRank enumeration 21
- Sessions
  - establishing 11
  - lifecycle 11
  - messages 13
  - negotiating resources 13
  - terminating 14
- Setup timer - session (section 3.2.2.1 27, section 3.2.5.1 28)
- Standards assignments 16

## T

- Teardown timer - session (section 3.2.2.2 27, section 3.2.5.2 29)
- TearDownContext (Opnum 4) method 41
- TearDownContext method 41
- TearDownType enumeration 21
- Terminating a session example 60
- Terminating session by primary partner example 60
- Terminating session by secondary partner example 61
- Terminating session examples 60
- Timer events
  - client 49
  - common 28
  - server 47
- Timers
  - client 49
  - common 27

server 30  
Tracking changes 72  
Transport - message 17

## **U**

UUID 20

## **V**

Vendor-extensible fields 15  
Versioning (section 1.7 15, section 3.1 22)